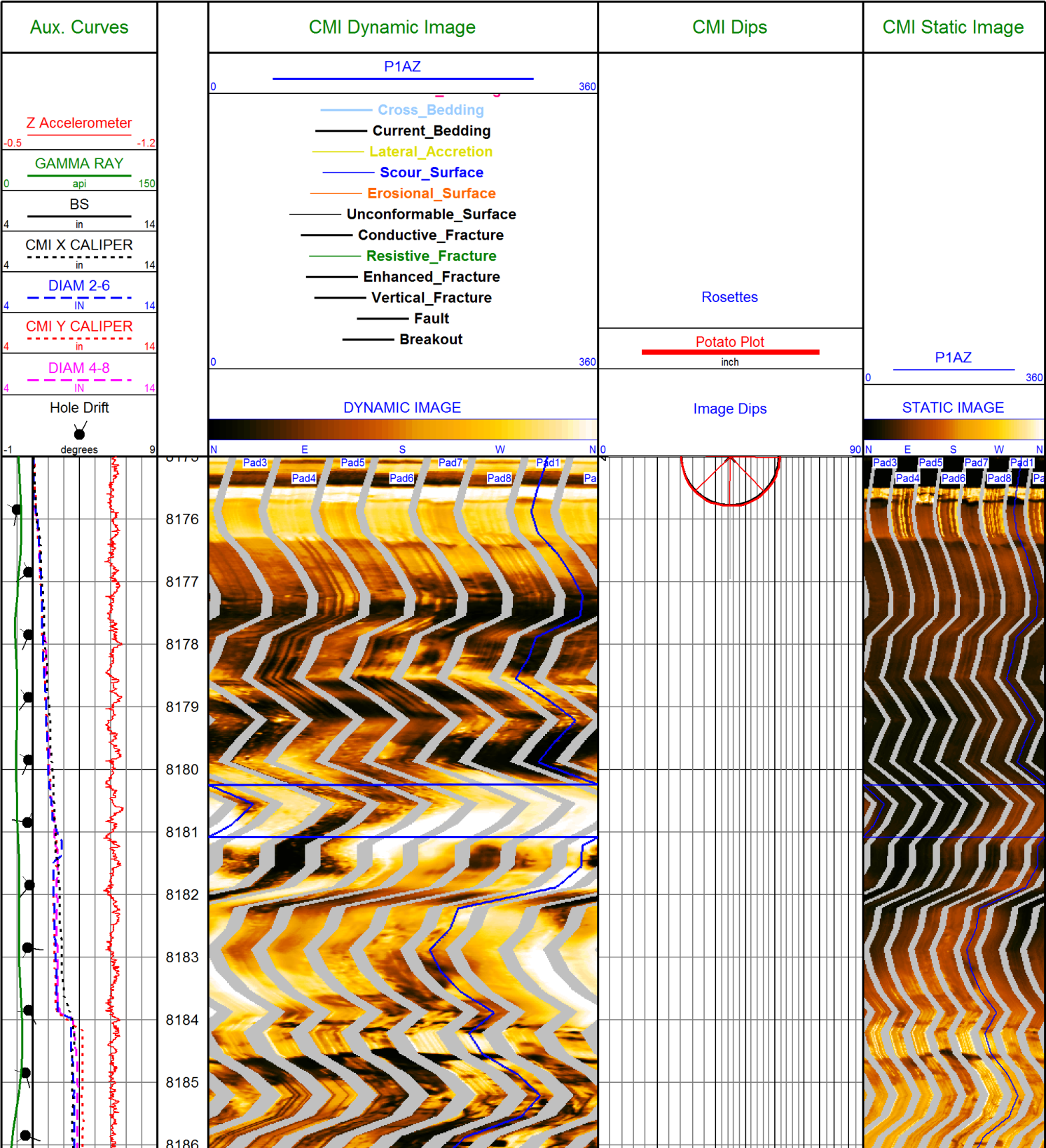
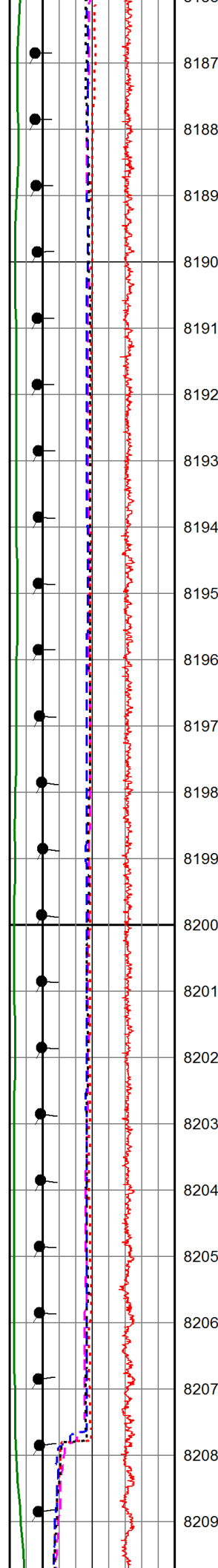
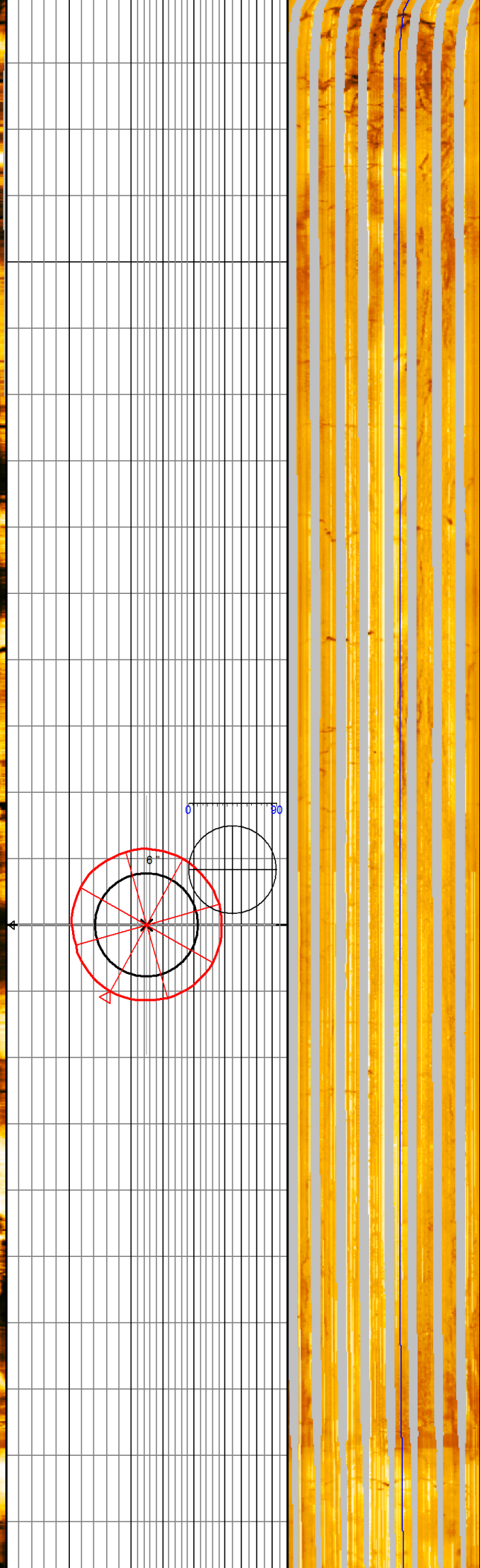
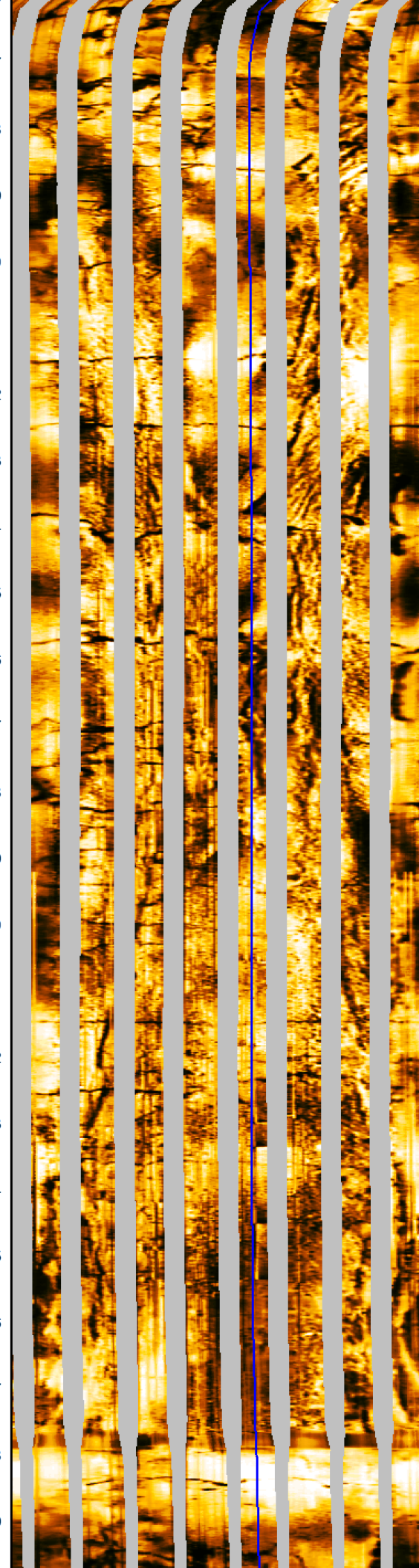
 <div> <div>Compact Micro-Imager</div> <div>Image Only</div> </div>			
<div> <div>COMPANY:</div> <div>KINDER MORGAN CO2 Co. L.P</div> </div>			
<div> <div>WELL:</div> <div>HE-6</div> </div>			
<div> <div>FIELD:</div> <div>MCELMO</div> </div>			
<div> <div>COUNTY:</div> <div>MONTEZUMA</div> <div>STATE:</div> <div>COLORADO</div> </div>			
<div>Location:</div> <div>275' FNL &amp; 10' FML</div>	<div>Latitude:</div> <div>37.50118</div>	<div>Other Services:</div> <div>COMP PHOTO DENSITY</div> <div>COMP DUAL NEUTRON</div> <div>DUAL LATEROLOG</div> <div>MICRO RESISTIVITY</div> <div>SPECTRAL GAMMA RAY</div>	
<div>API:</div> <div>05-083-06700</div>	<div>Longitude:</div> <div>-108.903904</div>		
<div>Licence:</div>			
<div>Permanent Datum:</div> <div>GL</div> <div>Elevation:</div> <div>6475.00 ft</div>	<div>Elevations:</div> <div>K.B.: 6500.00 ft</div> <div>D.F.: 6500.00 ft</div> <div>G.L.: 6475.00 ft</div>		
<div>Log measured from</div> <div>KB</div> <div>25.00 ft</div> <div>above Permanent Datum</div>			
<div>Drilling measured from</div> <div>KB</div>			
<div>Date</div> <div>9-JUNE-2013</div>			
<div>Run Number</div> <div>ONE</div>			
<div>Service Order</div> <div>3532456</div>			
<div>Depth Driller</div> <div>8338.00 ft</div>			
<div>Depth Logger</div> <div>8332.00 ft</div>			
<div>First Reading</div> <div>8333.00 ft</div>			
<div>Last Reading</div> <div>8175.00 ft</div>			
<div>Casing Driller</div> <div>7.00 in</div> <div>@ 8178.00 ft</div>			@
<div>Casing Logger</div> <div>8175.00 ft</div>			
<div>Bit Size</div> <div>6.00 in</div>			
<div>Hole Fluid Type</div> <div>H2O</div>			
<div>Density</div> <div>Viscosity</div> <div>8.30 lb/USg</div> <div>50.00 CP</div>			
<div>pH</div> <div>Fluid Loss</div> <div>9.00</div>			
<div>Sample Source</div> <div>FLOW LINE</div>			
<div>Rm @ Measured Temperature</div> <div>3.20 ohm-m</div> <div>@ 72.00° F</div>			@
<div>Rmt @ Measured Temperature</div> <div>2.56 ohm-m</div> <div>@ 72.00° F</div>			@
<div>Rmc @ Measured Temperature</div> <div>3.84 ohm-m</div> <div>@ 72.00° F</div>			@
<div>Source Rmt</div> <div>Rmc</div> <div>CALC</div> <div>CALC</div>			
<div>Rm @ BHT</div> <div>1.75 ohm-m</div> <div>@ 134.00° F</div>			@
<div>Time Since Circulation</div> <div>8 HOURS</div>			
<div>Maximum Recorded Temperature</div> <div>134.00° F</div> <div>@</div>			@
<div>Equipment No.</div> <div>Location</div> <div>13045</div> <div>GJ/CO</div>			
<div>Recorded By</div> <div>A. VAN BRUNT</div>			
<div>Witnessed By</div> <div>C. HESSEN</div>			

All interpretation of log data are opinions based on inferences from electrical or other measurements. We do not guarantee the accuracy or correctness of any interpretation or recommendation and we shall not be liable or responsible for any loss, cost, damages or expenses incurred or sustained by anyone resulting from any interpretation or recommendation made by any of our employees or agents.			
Rig:	NABORS 405	Remarks:	Service Order # 3532456
Drilling Stopped		CMI PASS DEPTH CORRECTED TO OPEN HOLE GAMMA RAY. TIGHT PULLS, BOREHOLE SIZE AND RUGOSITY WILL AFFECT DATA QUALITY. CALIPERS OPENED TO 8.75" BIT SIZE FROM 8208.00' TO 8184.00'.	
Circulation Stopped	8 HOURS		
Tool on Bottom			
BHT	134.00° F		
Equipment Data			
Tool Type	Tool Type	Other	
MIE-A.A 207 MIM-A.A 106		PROCESSED BY J. TURNER	
CORRELATION PARAMETERS			

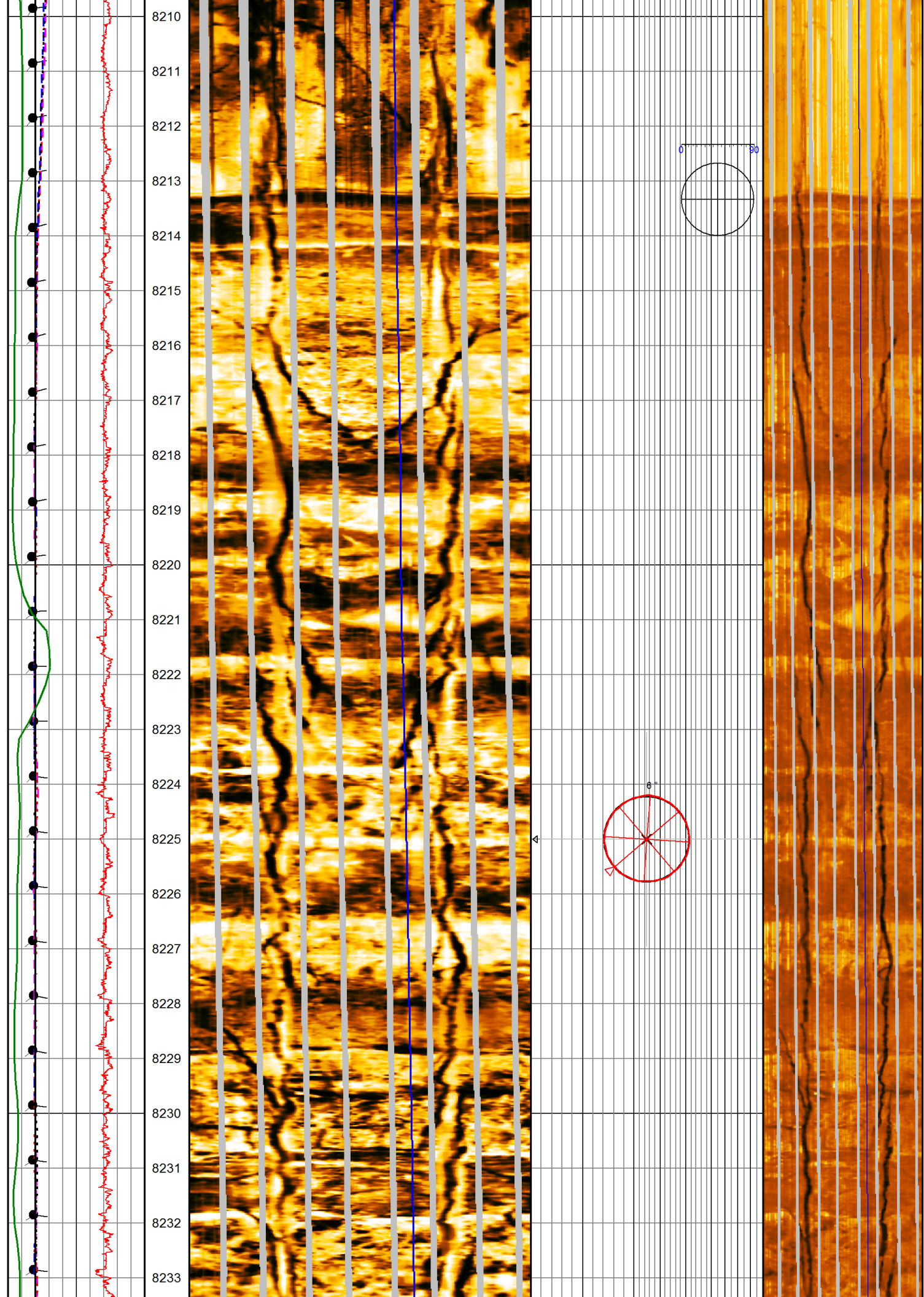




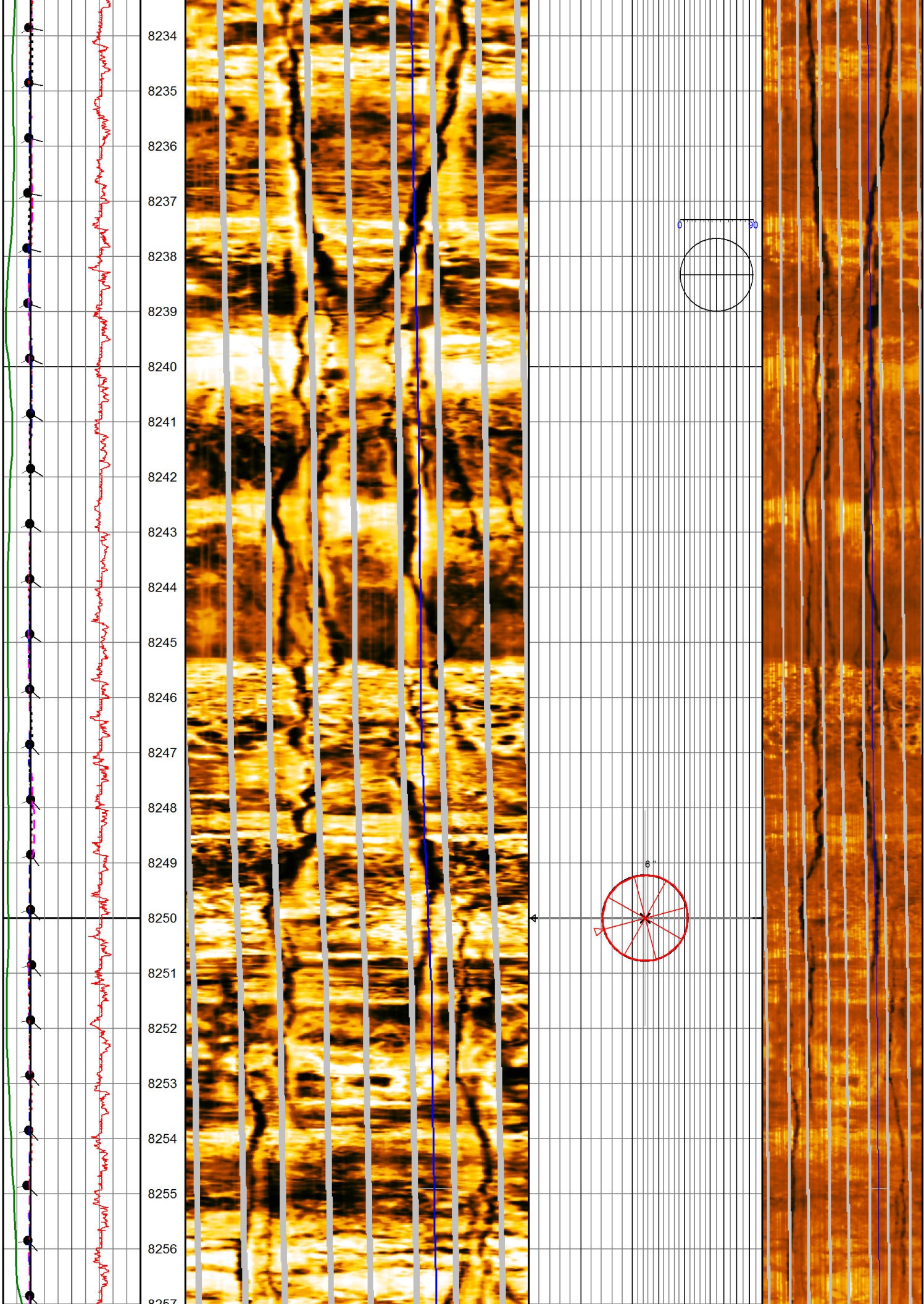
8187  
8188  
8189  
8190  
8191  
8192  
8193  
8194  
8195  
8196  
8197  
8198  
8199  
8200  
8201  
8202  
8203  
8204  
8205  
8206  
8207  
8208  
8209



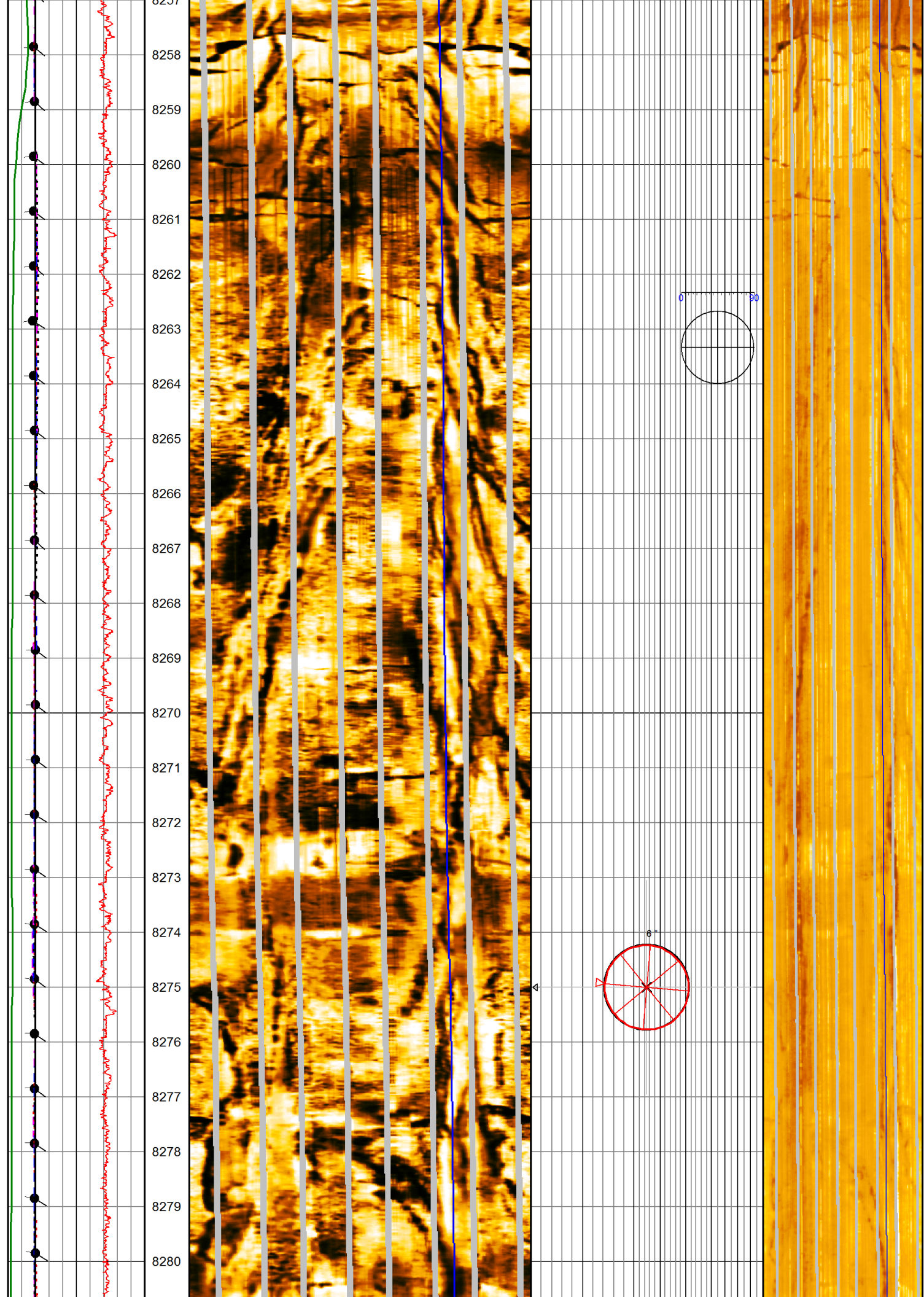


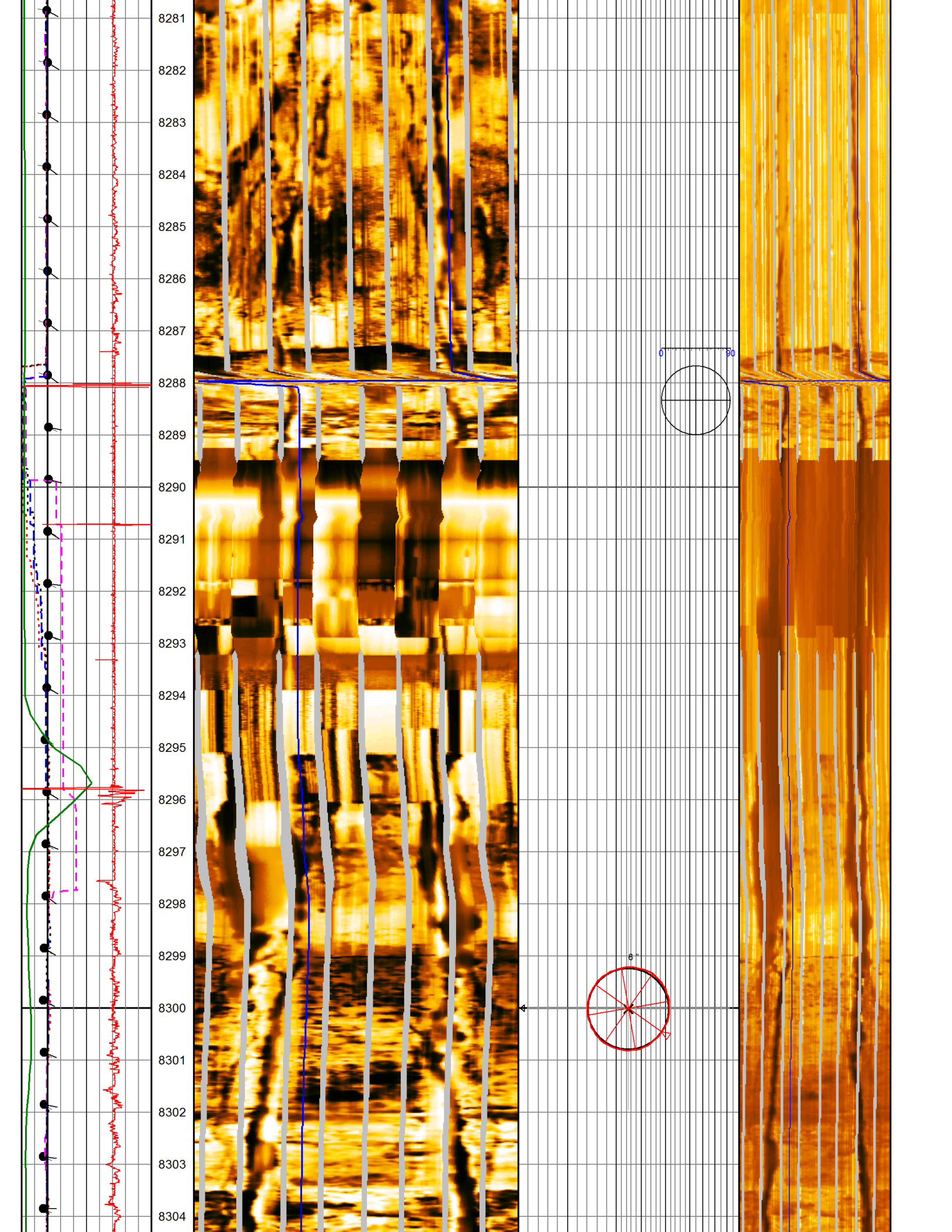




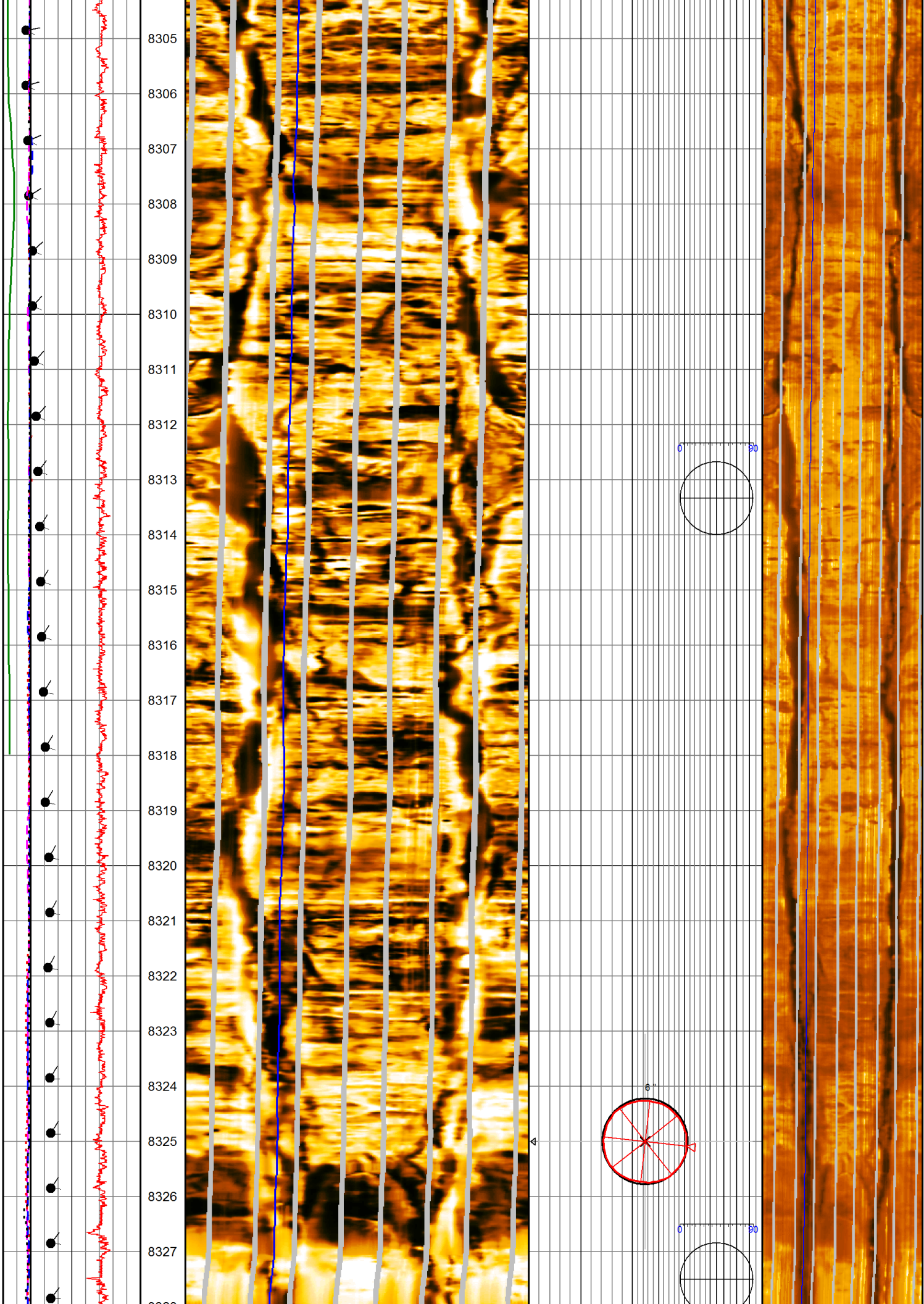




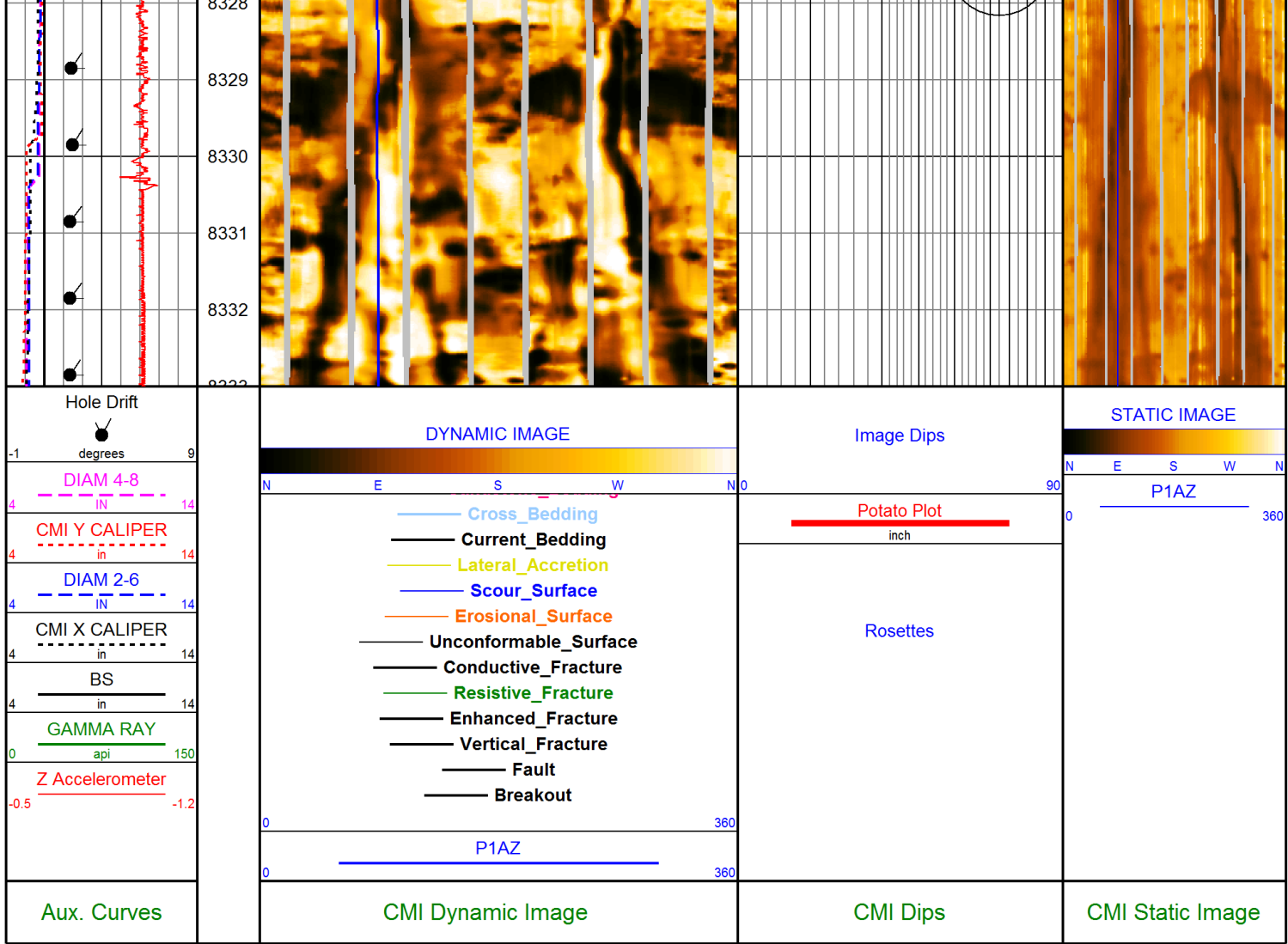












COMPANY:	KINDER MORGAN C02 Co. L.P
WELL:	HE-6
FIELD:	MCELMO
COUNTY:	MONTEZUMA
STATE:	COLORADO



**Weatherford®**

Compact Micro-Imager  
Image Only