



Scale: 5" / 100'
Measured Depth Log

Well Name HE-6

Location 20.4 Mi. NW of Cortez, CO

State CO

County Montezuma

Country US

Rig Number NABORS 405

API Number 05-083-06700-00

Region Colorado

Field Mc Elmo Dome

Spud Date 24APR2013

Surface Coordinates SHL: 275'FNL, 10' FWL, SEC. 1, T37N, R19W NMPM

Ground Elevation 6475

K.B. Elevation 6500.5

Logged Interval 110

Formation Leadville Base

Type of Drilling Fluid Fresh Water

Operator

Company KINDER MORGAN CO2 CO., LP

Address 17801 HWY 4881
Colorado

Geologist

Name Leon Walters

Company Above Enterprise

510 Old Lubbock HWY
Snyder, TX 79549

Other

ML-581 and ML-569

Rock Types

UNKNOWN	DOLOMITE	SHALE GRAY	TILL
ANHYDRITE	CHERT	SHALE COLORED	BENTONITE
GYPSUM	COAL	SILTSTONE	TUFF
SALT	MARLSTONE	SANDSTONE	IGNEOUS
SIDERITE or LIMONITE	CLAYSTONE	CONGLOMERATE	METAMORPHIC
LIMESTONE	SHALE	BRECCIA	

Accessories

Fossils

ALGAE
AMPHIPORA
BELEMNITE
BIOCLASTIC
BRACHIOPOD
BRYOZOA
CEPHALOPOD
CORAL
CRINOID
ECHINOID
FISH
FORAMINIFERA

Fossil

GASTROPOD
OOLITE
OSTRACOD
PELECYPOD
PELLET
PISOLITE
PLANT REMAINS
PLANT SPORES
SCAPHOPOD
STROMATOPOROID

Minerals

ANHYDRITIC

Argillaceous

ARGILLITE GRAIN
BENTONITE
BITUMENOUS SUBSTANCE
BRECCIA FRAGMENTS
CALCAREOUS
CARBONACEOUS FLAKES
CHTDK
CHTLT
COAL - THIN BEDS
DOLOMITIC
FELDSPAR
FERRUGINOUS PELLET
FERRUGINOUS

Glaucconite

GYPSIFEROUS
HEAVY MINERAL
KAOLIN
MARLSTONE
MINERAL CRYSTALS
NODULES
PHOSPHATE PELLETS
PYRITE
SALT CAST
SANDY
SILICEOUS
SILTY
TUFFACEOUS

Stringer

ANHYDRITE STRINGER
BENTONITE STRINGER
COAL STRINGER
DOLOMITE STRINGER
GYPSUM STRINGER
LIMESTONE STRINGER
MARLSTONE (CALC) STRG
MARLSTONE (DOL) STRG
SANDSTONE STRINGER
SHALE STRINGER
SILTSTONE STRINGER

Other Symbols

Oil Show

DEAD
EVEN
QUESTIONABLE
SPOTTED STAINING

Porosity

EARTHY
FENESTRAL
FRACTURE
INTERCRYSTALLINE
INTEROOLITIC

Moldic

ORGANIC
PINPOINT
VUGGY

Engineering

BIT
CONNECTION (LEFT)
CONNECTION (RIGHT)
CONNECTION GAS
CORE - LOST
CORE - RECOVERED
DST INTERVAL

Fault

FORMATION TOP
GAS SHOW
MN DEPTH
NORMAL FAULT
OIL SHOW
OVERTURNED STRATA
REVERSE FAULT
SIDEWALL CORE (LEFT)
SIDEWALL CORE (RIGHT)
SLIDE
SURVEY
TRIP GAS

Wireline Tested - Left

WIRELINE TESTED - RT

Rounding

ANGULAR
ROUNDED
SUBANG
SUBRND

Textures

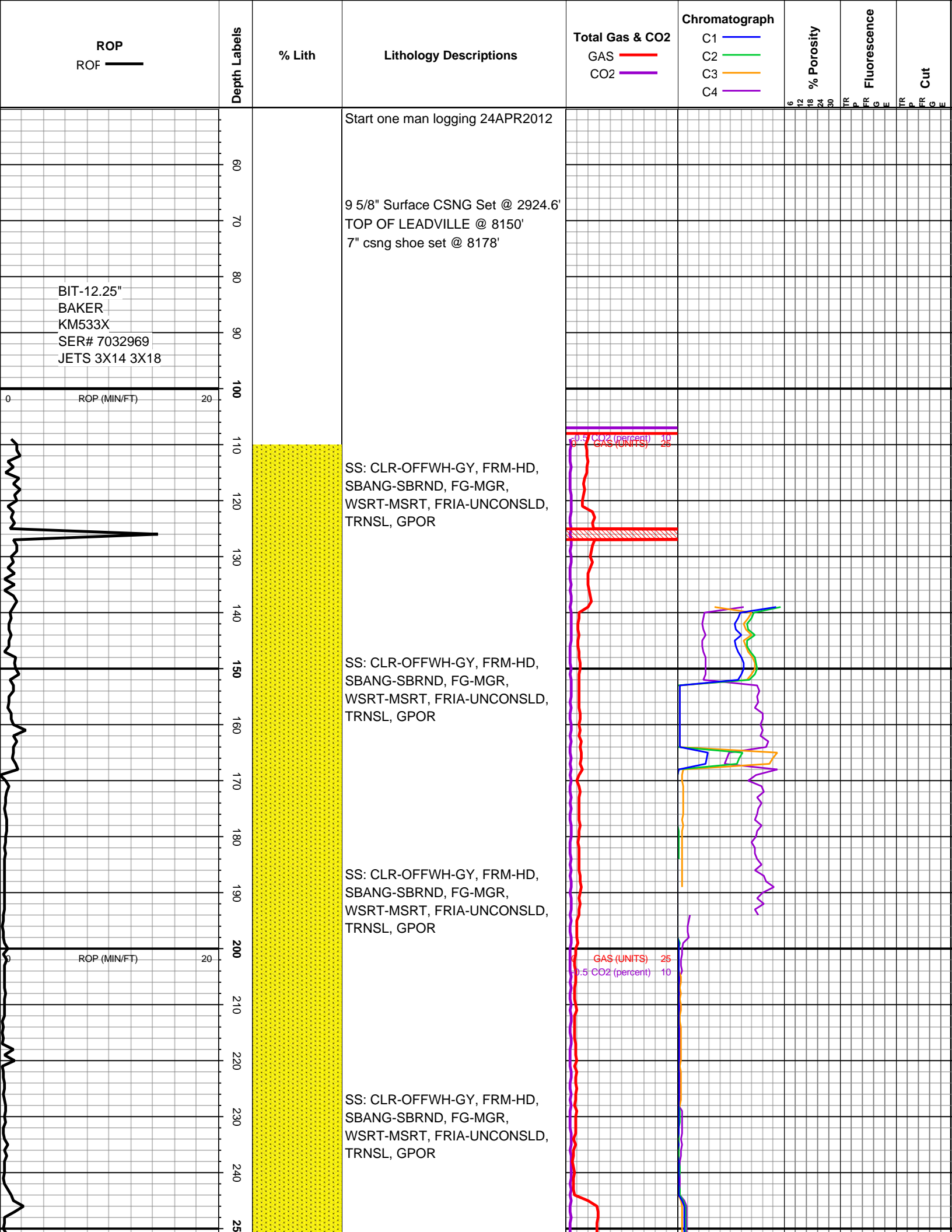
BOUNDSTONE
CHALKY
CRYPTOXLN

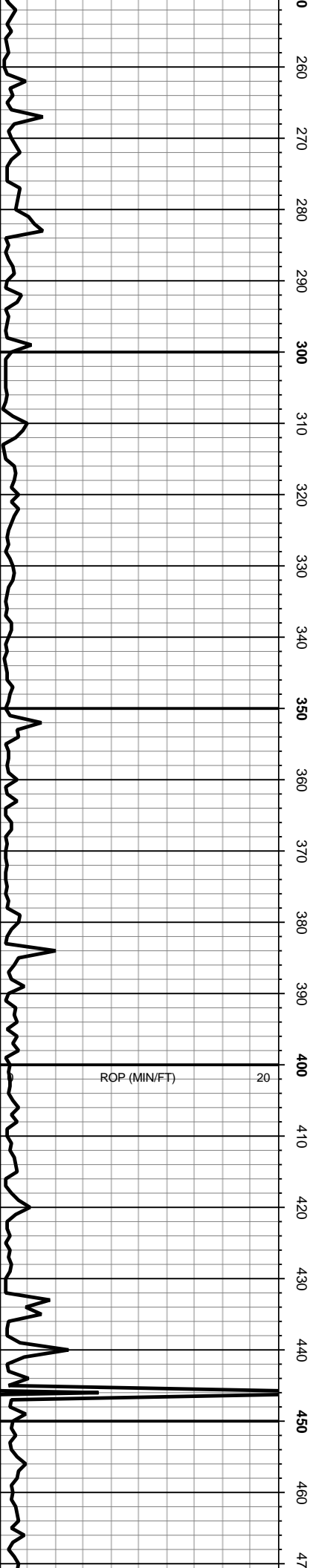
Earthy

FINELYXLN
GRAINSTONE
LITHOGRAPHIC
MICROXLN
MUDSTONE
PACKSTONE
WACKESTONE

Sorting

MODERATE
POOR
WELL





0

260

270

280

290

300

310

320

330

340

350

360

370

380

390

400

410

420

430

440

450

460

470

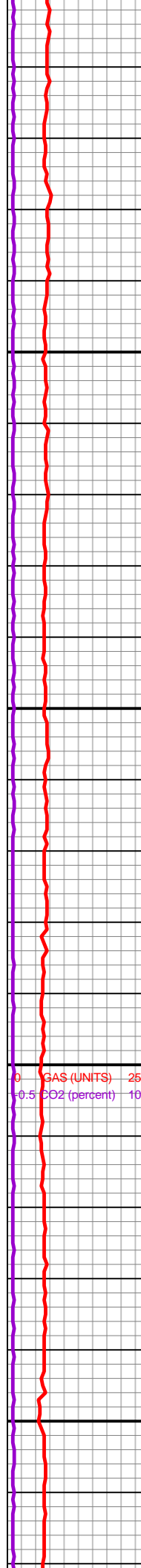
SS: CLR-OFFWH-GY, FRM-HD,
SBANG-SBRND, FG-MGR,
WSRT-MSRT, FRIA-UNCONSLD,
TRNSL, GPOR

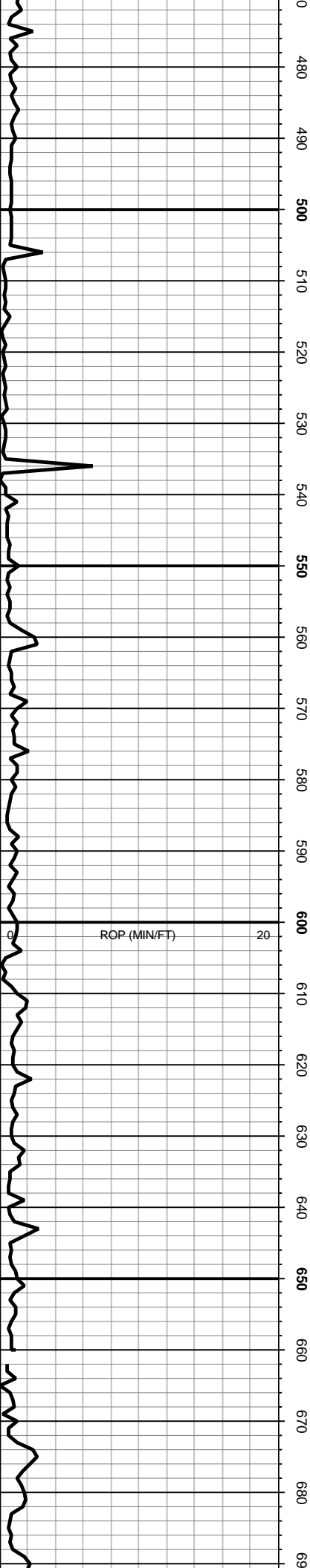
SS: CLR-OFFWH-GY, FRM-HD,
SBANG-SBRND, FG-MGR,
WSRT-MSRT, FRIA-UNCONSLD,
TRNSL, GPOR

SS: CLR-OFFWH-GY, FRM-HD,
SBANG-SBRND, FG-MGR,
WSRT-MSRT, FRIA-UNCONSLD,
TRNSL, GPOR

SS: CLR-OFFWH-GY, FRM-HD,
SBANG-SBRND, FG-MGR,
WSRT-MSRT, FRIA-UNCONSLD,
TRNSL, GPOR

SS: CLR-OFFWH-GY, FRM-HD,
SBANG-SBRND, FG-MGR,
WSRT-MSRT, FRIA-UNCONSLD,
TRNSL, GPOR





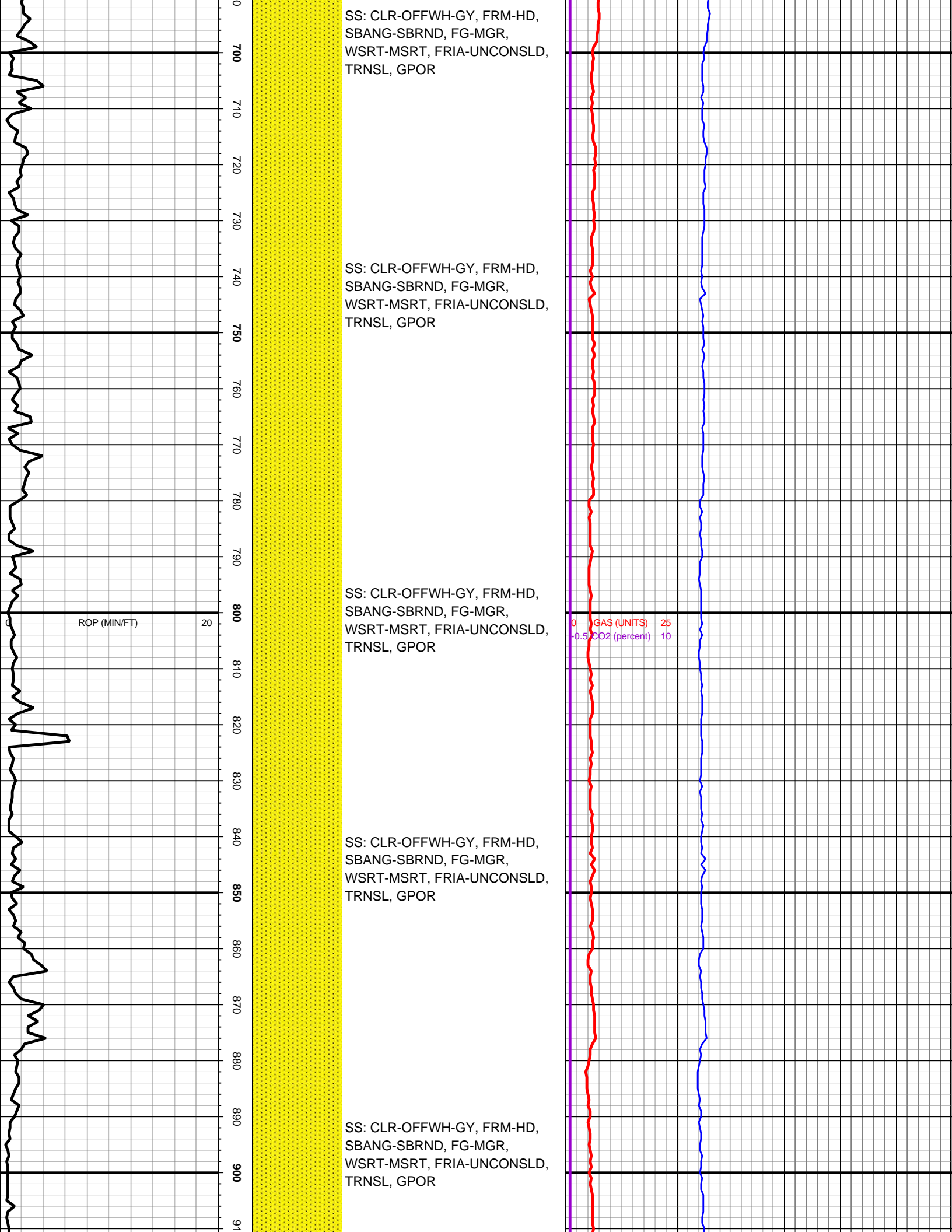
SS: CLR-OFFWH-GY, FRM-HD,
SBANG-SBRND, FG-MGR,
WSRT-MSRT, FRIA-UNCONSLD,
TRNSL, GPOR

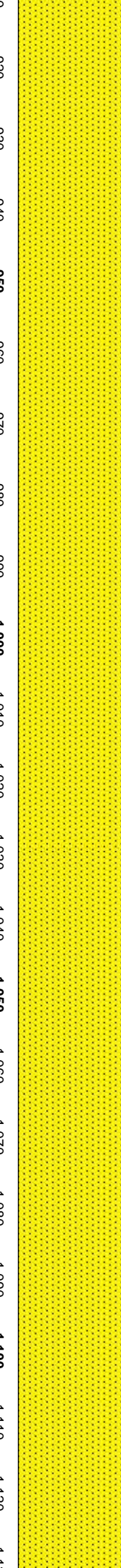
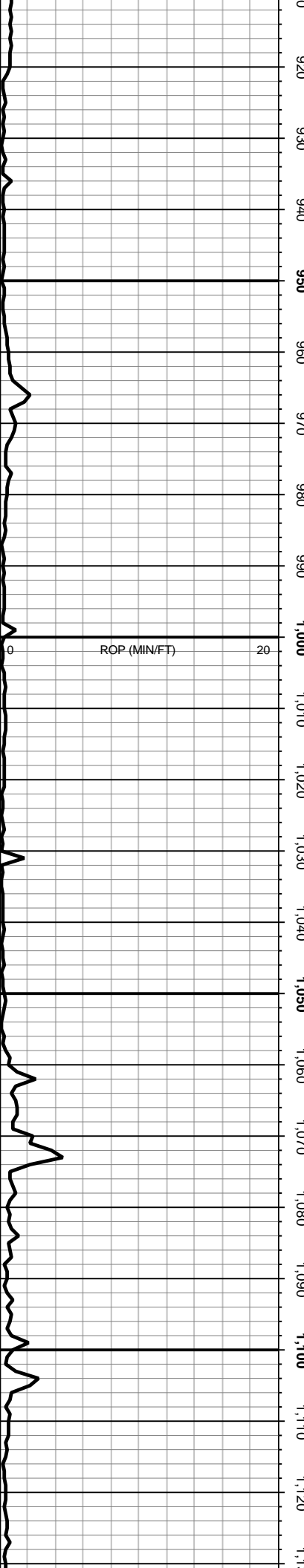
SS: CLR-OFFWH-GY, FRM-HD,
SBANG-SBRND, FG-MGR,
WSRT-MSRT, FRIA-UNCONSLD,
TRNSL, GPOR

SS: CLR-OFFWH-GY, FRM-HD,
SBANG-SBRND, FG-MGR,
WSRT-MSRT, FRIA-UNCONSLD,
TRNSL, GPOR

SS: CLR-OFFWH-GY, FRM-HD,
SBANG-SBRND, FG-MGR,
WSRT-MSRT, FRIA-UNCONSLD,
TRNSL, GPOR





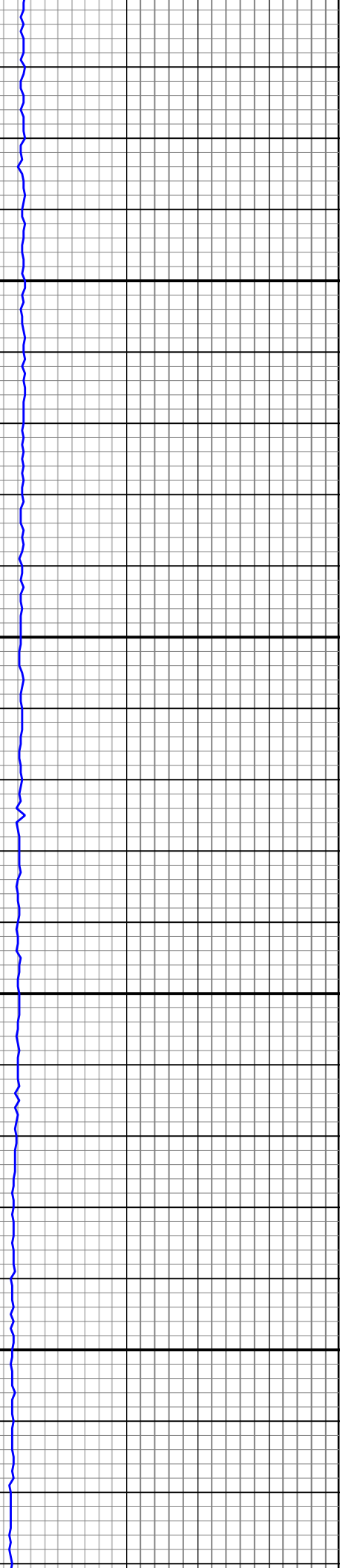
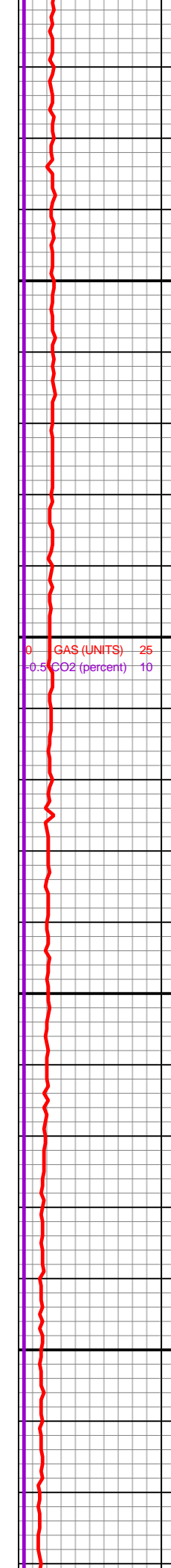


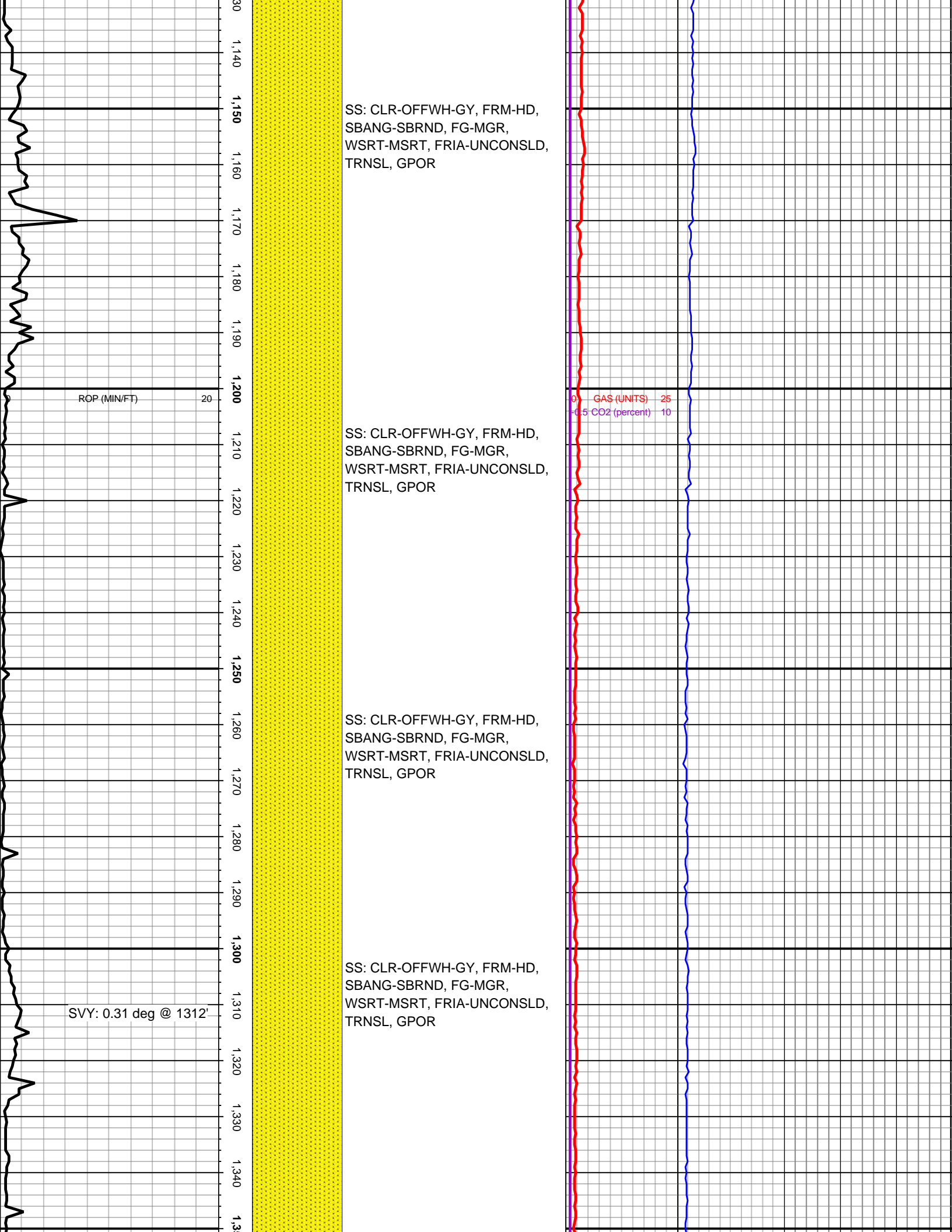
SS: CLR-OFFWH-GY, FRM-HD,
SBANG-SBRND, FG-MGR,
WSRT-MSRT, FRIA-UNCONSLD,
TRNSL, GPOR

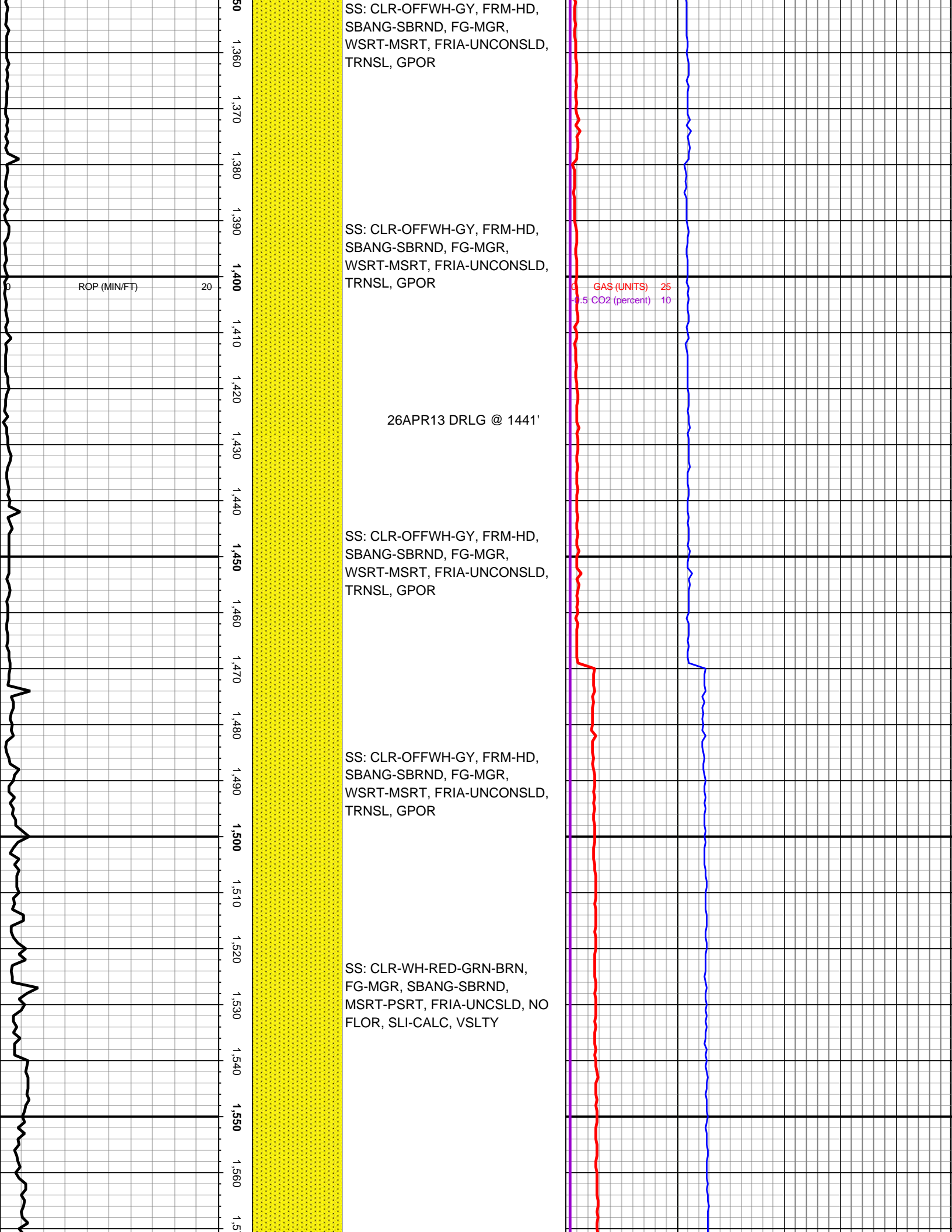
SS: CLR-OFFWH-GY, FRM-HD,
SBANG-SBRND, FG-MGR,
WSRT-MSRT, FRIA-UNCONSLD,
TRNSL, GPOR

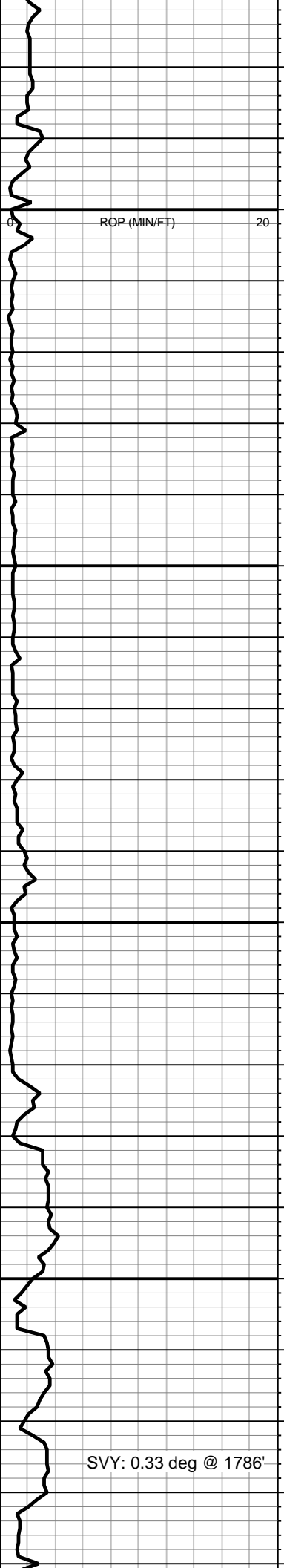
SS: CLR-OFFWH-GY, FRM-HD,
SBANG-SBRND, FG-MGR,
WSRT-MSRT, FRIA-UNCONSLD,
TRNSL, GPOR

SS: CLR-OFFWH-GY, FRM-HD,
SBANG-SBRND, FG-MGR,
WSRT-MSRT, FRIA-UNCONSLD,
TRNSL, GPOR









1,570
1,580
1,590
1,600
1,610
1,620
1,630
1,640
1,650
1,660
1,670
1,680
1,690
1,700
1,710
1,720
1,730
1,740
1,750
1,760
1,770
1,780
1,790

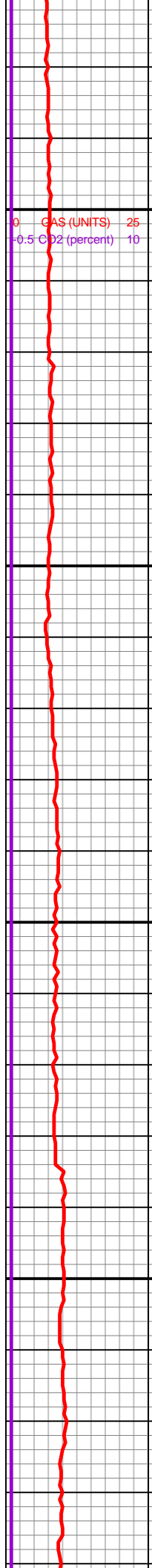
SS: CLR-WH-RED-GRN-BRN,
FG-MGR, SBANG-SBRND,
MSRT-PSRT, FRIA-UNCSLD, NO
FLOR, SLI-CALC, VSLTY

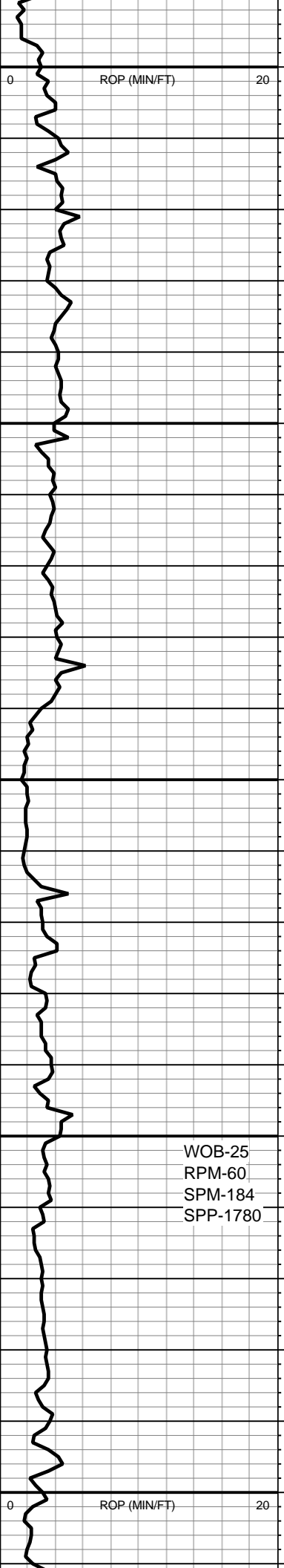
SS: CLR-WH-RED-GRN-BRN,
FG-MGR, SBANG-SBRND,
MSRT-PSRT, FRIA-UNCSLD, NO
FLOR, SLI-CALC, VSLTY

SS: CLR-WH-RED-GRN-BRN,
FG-MGR, SBANG-SBRND,
MSRT-PSRT, FRIA-UNCSLD, NO
FLOR, SLI-CALC, VSLTY

SS: CLR-WH-RED-GRN-BRN,
FG-MGR, SBANG-SBRND,
MSRT-PSRT, FRIA-UNCSLD, NO
FLOR, SLI-CALC, VSLTY

SS: CLR-WH-RED-GRN-BRN,
FG-MGR, SBANG-SBRND,
MSRT-PSRT, FRIA-UNCSLD, NO
FLOR, SLI-CALC, VSLTY





1,800
1,810
1,820
1,830
1,840
1,850
1,860
1,870
1,880
1,890
1,900
1,910
1,920
1,930
1,940
1,950
1,960
1,970
1,980
1,990
2,000
2,0

SS: CLR-WH-RED-GRN-BRN,
FG-MGR, SBANG-SBRND,
MSRT-PSRT, FRIA-UNCSLD, NO
FLOR, SLI-CALC, VSLTY

SS: CLR-WH-RED-GRN-BRN,
FG-MGR, SBANG-SBRND,
MSRT-PSRT, FRIA-UNCSLD, NO
FLOR, SLI-CALC, VSLTY

SS: CLR-WH-RED-GRN-BRN,
FG-MGR, SBANG-SBRND,
MSRT-PSRT, FRIA-UNCSLD, NO
FLOR, SLI-CALC, VSLTY

SS: CLR-WH-RED-GRN-BRN,
FG-MGR, SBANG-SBRND,
MSRT-PSRT, FRIA-UNCSLD, NO
FLOR, SLI-CALC, VSLTY

27APR2013 DRLG @ 1956'

SS: CLR-WH-RED-GRN-BRN,
FG-MGR, SBANG-SBRND,
MSRT-PSRT, FRIA-UNCSLD, NO
FLOR, SLI-CALC, VSLTY

SS: CLR-WH-RED-GRN-BRN,
FG-MGR, SBANG-SBRND,

