

1625 Broadway  
Suite 2000  
Denver, CO 80202  
  
Tel: 303.228.4000  
Fax: 303.228.4280  
www.nobleenergyinc.com



July 26, 2013

Colorado Oil and Gas Conservation Commission  
The Chancery Building  
1120 Lincoln Street, Suite 801  
Denver, CO 80203  
Attn: Mr. Matt Lepore, Director

RE: Guttersen State DD17-78HN  
Niobrara New Drill  
Township 3 North, Range 63 West, 6th P.M.  
Section 17: SW/4SW/4: 275' FSL & 425' FWL (Surface Location)  
Section 17: SW/4SW/4: 725' FSL & 663' FWL (Beginning of Lateral)  
Section 17: NW/4NW/4: 75' FNL & 660' FWL (Bottom Hole Location)  
Weld County, Colorado

Dear Director:

Noble Energy, Inc. ("NEI") is planning to drill the captioned boundary well in accordance with the provisions of COGCC Rule 318A.e.

NEI's proposed wellbore spacing unit consists of the Sec 8: SW/4SW/4, Sec 17: W/2W/2, T3N, R63W, creating a 200-acre wellbore spacing unit for the Niobrara formation. NEI is the only owner within the proposed wellbore spacing unit, therefore NEI hereby attests that no notice letters are required under COGCC Rule 318A(l).e.(6).

Enclosed are copies of the following documents to assist you in your review and approval of NEI's proposed APD for the captioned well:

- Map & plat illustrating proposed wellbore spacing unit.

Thank you for your attention to the enclosed. NEI respectfully requests that the COGCC review the enclosed information and approve the Application for Permit to Drill the captioned well.

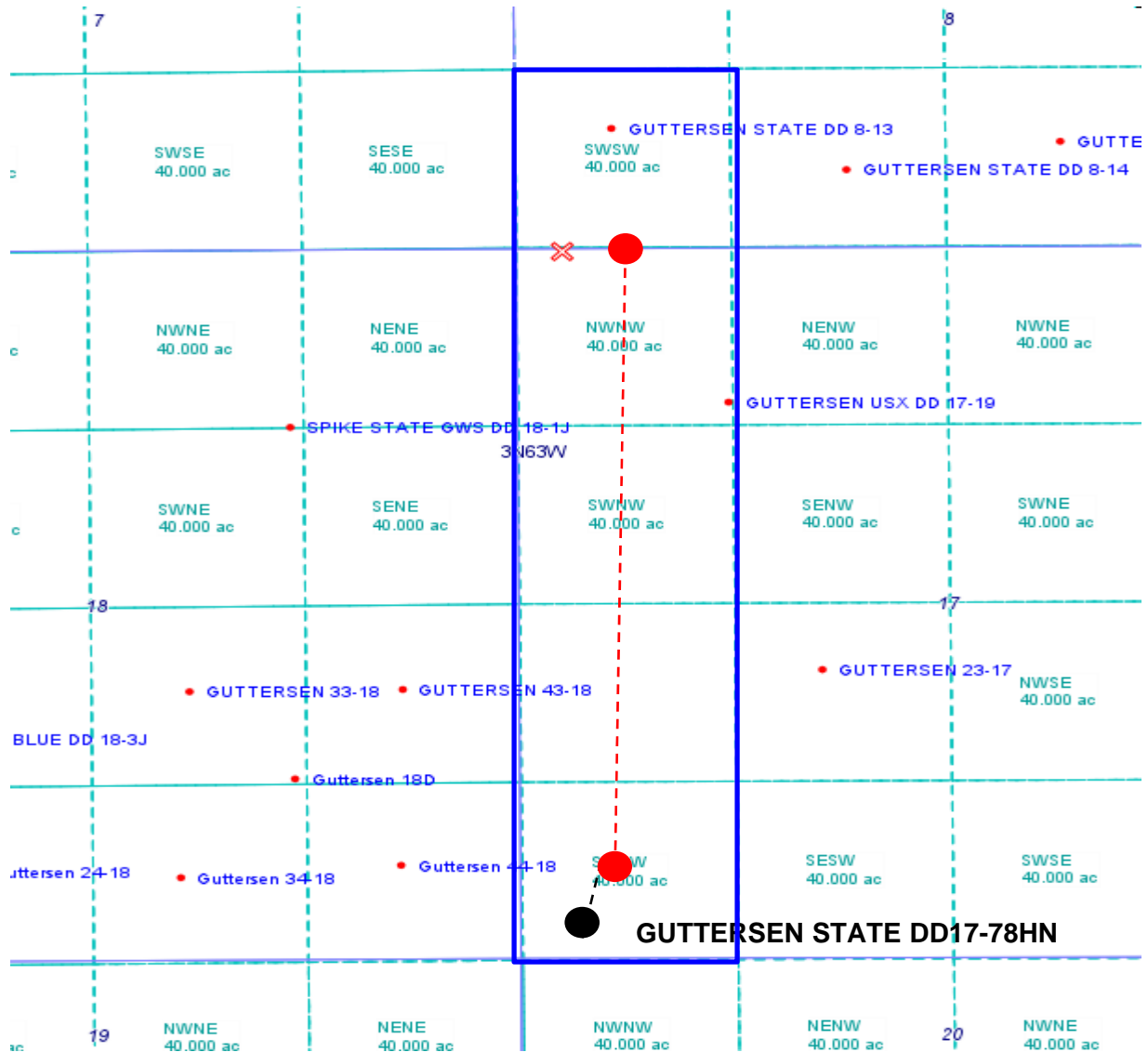
Sincerely,

Justin Garrett  
Regulatory Analyst II  
Noble Energy Inc.

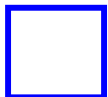
# GUTTERSEN STATE DD17-78HN

Proposed Spacing Unit – Noble Energy, Inc.

SW/4SW/4 Section 8, Township 3 North, Range 63 West  
W/2W/2 Section 17, Township 3 North, Range 63 West



Legend



Proposed 200.00 +/- acre spacing unit

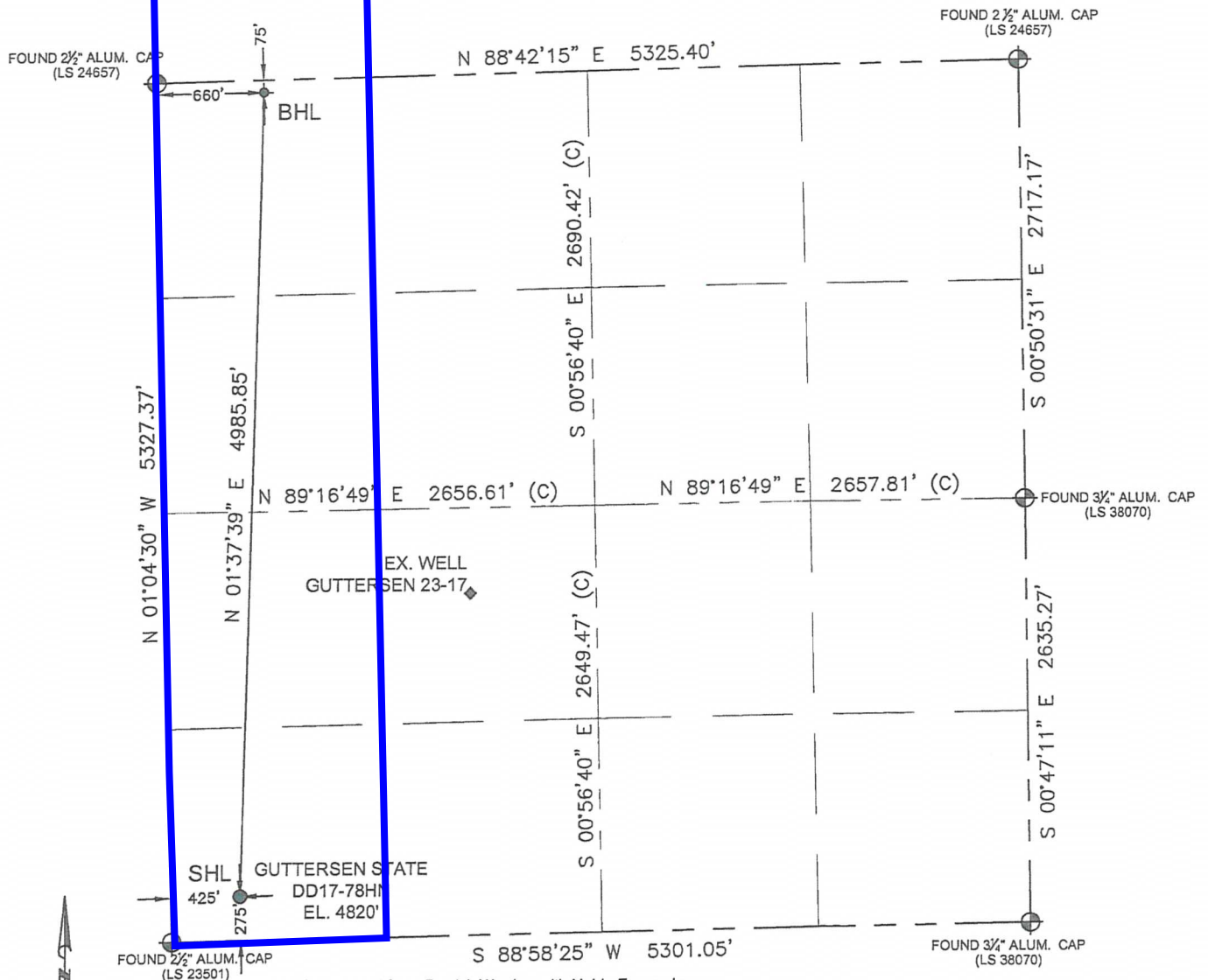


Bottom Hole Location

# WELL LOCATION CERTIFICATE

THIS MAP DOES NOT REPRESENT A BOUNDARY SURVEY

SECTION: 17  
TOWNSHIP: 3N  
RANGE: 63W



In accordance with a request from Derrick Worden with Noble Energy Inc. Petroleum Field Services, LLC has determined the surface location of the GUTTERSEN STATE DD17-78HN to be 275' from the SOUTH line and 425' from the WEST line and the bottom hole to be 75' from the NORTH line and 660' from the WEST line as measured at right angles from the section line of Section 17, Township 3 North, Range 63 West of the Sixth Principal Meridian, County of WELD, State of Colorado.

I hereby state that this Well Location Certificate was prepared by me, or under my direct supervision, that the fieldwork was completed on 5/29/13, for and on behalf of Noble Energy Inc., that this is not a Land Survey Plat or an Improvement Survey Plat, and that it is not to be relied upon for establishment of fence, building, or other future improvement lines.

SURFACE LOCATION:  
LATITUDE: 40.21887 °N  
LONGITUDE: 104.46953 °W  
PDOP: 2.0  
ELEV: 4820'  
1/4 SW 1/4 SW 1/4  
NEAREST PROPERTY LINE: 275' South

BOTTOM HOLE:  
LATITUDE: 40.23254 °N  
LONGITUDE: 104.46882 °W

## Notes:

- 1) Bearings shown are Grid Bearings of the Colorado State Plane Coordinate System, North Zone, North American Datum 1983/2007. The lineal dimensions as shown herein are grid distances based upon the "U.S. Survey Foot."
- 2) Ground elevations are based on an observed GPS elevation (NAVD 1988 DATUM).
- 3) NEAREST EXISTING WELL IN SECTION 17 IS: GUTTERSEN 23-17, 2368' NE
- 4) IMPROVEMENTS: See LOCATION DRAWING exhibit for all visible improvements within 400' of disturbed area.
- 5) SURFACE USE: RANGELAND
- 6) INSTRUMENT OPERATOR: BEN HARDENBERGH

## Note:

According to Colorado law, you must commence any legal action based upon any defect in this W.L.C. within three years after you first discover such defect. In no event, may any action based upon any defect in this survey be commenced more than ten years after the date of this certification shown hereon. (13-80-105 C.R.S.)

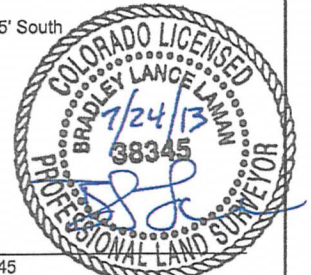
## LEGEND

- = FOUND MONUMENT
- = PROPOSED WELL
- ◆ = BOTTOM HOLE
- ◆ = EXISTING WELL

DRAWING  
DATE:  
07-24-13

DRAWN BY:  
CLM

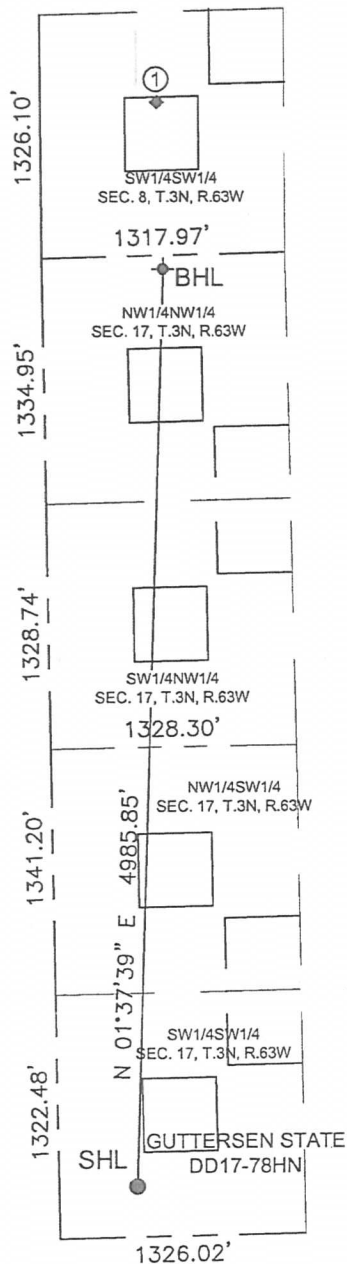
CHECKED BY:  
TJN



BRADLEY L. LAMAN, PLS 38345  
COLORADO LICENSED PROFESSIONAL LAND SURVEYOR  
FOR AND ON BEHALF OF P.F.S., LLC

# SITE SKETCH

SECTION: 17  
TOWNSHIP: 3N  
RANGE: 63W



①

GUTTERSEN STATE DD #8-13  
SW1/4SW1/4  
834' FSL / 635' FEL  
LAT-40.23504°N  
LONG-104.46890°W  
PDOP: 2.0  
ELEV: 4845'

## LEGEND

- = PROPOSED WELL
- ◆ = EXISTING WELL
- ⊙ = BOTTOM HOLE

FIELD DATE: 05-29-13
DRAWING DATE: 07-23-13
DRAWN BY: CLM
CHECKED BY: TJN