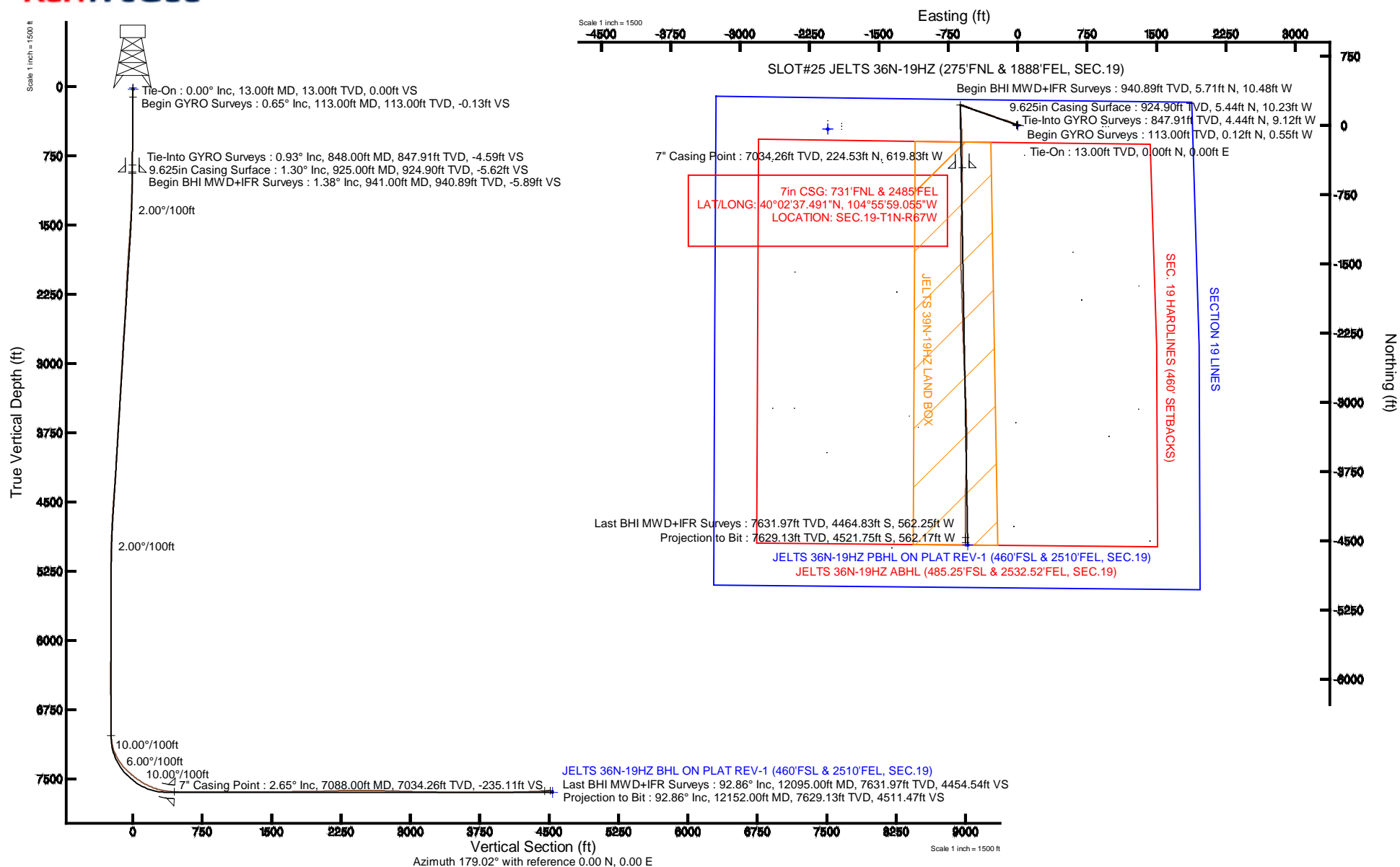


|           |                          |           |   |
|-----------|--------------------------|-----------|---|
| Location: | COLORADO                 | Slot:     | SLOT#25 JELTS 36N-19HZ (275'FNL & 1888'FEL, SEC.19) |
| Field:    | WELD COUNTY (KERR MCGEE) | Well:     | JELTS 36N-19HZ                                      |
| Facility: | SEC.19-T1N-R67W          | Wellbore: | JELTS 36N-19HZ PWB                                  |

|   |  |
|---|--|
| Plot reference wellpath is JELTS 36N-19HZ (REV-B.0) PWP   |  |
| True vertical depths are referenced to ENSIGN 145 (RKB)   | Grid System: NAD83 / Lambert Colorado SP, Northern Zone (501), US feet |
| Measured depths are referenced to ENSIGN 145 (RKB)  | North Reference: True north  |
| ENSIGN 145 (RKB) to Mean Sea Level: 5160 feet   | Scale: True distance   |
| Mean Sea Level to Mud line (At Slot: SLOT#25 JELTS 36N-19HZ [275FNL & 1888FEL, SEC.19]): 0 feet | Depths are in feet   |
| Coordinates are in feet referenced to Sino  | Created by: rnhiale01 on 19/Jul/2013                                   |





# Actual Wellpath Report

JELTS 36N-19HZ AWP

Page 1 of 6



## REFERENCE WELLPATH IDENTIFICATION

|          |                                 |          |   |
|----------|---------------------------------|----------|---|
| Operator | KERR-MCGEE OIL & GAS ONSHORE LP | Slot     | SLOT#25 JELTS 36N-19HZ (275'FNL & 1888'FEL, SEC.19) |
| Area     | COLORADO                        | Well     | JELTS 36N-19HZ                                      |
| Field    | WELD COUNTY (KERR MCGEE)        | Wellbore | JELTS 36N-19HZ AWP                                  |
| Facility | SEC.19-T1N-R67W                 |          |   |

## REPORT SETUP INFORMATION

|                     |   |                      |                                    |
|---------------------|---|----------------------|------------------------------------|
| Projection System   | NAD83 / Lambert Colorado SP, Northern Zone (501), US feet | Software System      | WellArchitect® 4.0.0               |
| North Reference     | True  | User                 | Robiale01                          |
| Scale               | 0.999963  | Report Generated     | 19/Jul/2013 at 09:43               |
| Convergence at slot | n/a   | Database/Source file | WA_ANADARKO/JELTS_36N-19HZ_AWP.xml |

## WELLPATH LOCATION

|                       | Local coordinates |          | Grid coordinates |                 | Geographic coordinates |                 |
|-----------------------|-------------------|----------|------------------|-----------------|------------------------|-----------------|
|                       | North[ft]         | East[ft] | Easting[US ft]   | Northing[US ft] | Latitude               | Longitude       |
| Slot Location         | 38.64             | 2052.15  | 3159345.54       | 1259069.77      | 40°02'35.272"N         | 104°55'51.085"W |
| Facility Reference Pt |                   |          | 3157293.75       | 1259018.13      | 40°02'34.891"N         | 104°56'17.471"W |
| Field Reference Pt    |                   |          | 3197771.84       | 1268891.29      | 40°04'09.600"N         | 104°47'36.000"W |

## WELLPATH DATUM

|                          |                   |  |                   |
|--------------------------|-------------------|--|-------------------|
| Calculation method       | Minimum curvature | ENSIGN 145 (RKB) to Facility Vertical Datum  | 5160.00ft         |
| Horizontal Reference Pt  | Slot              | ENSIGN 145 (RKB) to Mean Sea Level   | 5160.00ft         |
| Vertical Reference Pt    | ENSIGN 145 (RKB)  | ENSIGN 145 (RKB) to Mud Line at Slot (SLOT#25 JELTS 36N-19HZ (275'FNL & 1888'FEL, SEC.19)) | 5160.00ft         |
| MD Reference Pt          | ENSIGN 145 (RKB)  | Section Origin   | N 0.00, E 0.00 ft |
| Field Vertical Reference | Mean Sea Level    | Section Azimuth  | 179.02°           |



# Actual Wellpath Report

JELTS 36N-19HZ AWP

Page 2 of 6



## REFERENCE WELLPATH IDENTIFICATION

|          |                                 |          |   |
|----------|---------------------------------|----------|---|
| Operator | KERR-MCGEE OIL & GAS ONSHORE LP | Slot     | SLOT#25 JELTS 36N-19HZ (275'FNL & 1888'FEL, SEC.19) |
| Area     | COLORADO                        | Well     | JELTS 36N-19HZ                                      |
| Field    | WELD COUNTY (KERR MCGEE)        | Wellbore | JELTS 36N-19HZ AWB                                  |
| Facility | SEC.19-T1N-R67W                 |          |   |

## WELLPATH DATA (138 stations) † = interpolated/extrapolated station

| MD [ft] | Inclination [°] | Azimuth [°] | TVD [ft] | Vert Sect [ft] | North [ft] | East [ft] | Latitude       | Longitude       | DLS [°/100ft] | Comments                  |
|---------|-----------------|-------------|----------|----------------|------------|-----------|----------------|-----------------|---------------|---------------------------|
| 0.00†   | 0.000           | 282.080     | 0.00     | 0.00           | 0.00       | 0.00      | 40°02'35.272"N | 104°55'51.085"W | 0.00          |                           |
| 13.00   | 0.000           | 282.080     | 13.00    | 0.00           | 0.00       | 0.00      | 40°02'35.272"N | 104°55'51.085"W | 0.00          | Tie-On                    |
| 113.00  | 0.650           | 282.080     | 113.00   | -0.13          | 0.12       | -0.55     | 40°02'35.273"N | 104°55'51.092"W | 0.65          | Begin GYRO Surveys        |
| 213.00  | 0.900           | 244.080     | 212.99   | 0.07           | -0.11      | -1.82     | 40°02'35.271"N | 104°55'51.108"W | 0.56          |                           |
| 313.00  | 0.640           | 250.470     | 312.98   | 0.58           | -0.64      | -3.05     | 40°02'35.266"N | 104°55'51.124"W | 0.27          |                           |
| 413.00  | 0.550           | 314.450     | 412.98   | 0.42           | -0.49      | -3.92     | 40°02'35.267"N | 104°55'51.135"W | 0.64          |                           |
| 513.00  | 1.190           | 318.420     | 512.96   | -0.71          | 0.63       | -4.95     | 40°02'35.278"N | 104°55'51.149"W | 0.64          |                           |
| 613.00  | 1.340           | 309.310     | 612.94   | -2.26          | 2.14       | -6.54     | 40°02'35.293"N | 104°55'51.169"W | 0.25          |                           |
| 713.00  | 0.550           | 288.490     | 712.93   | -3.17          | 3.04       | -7.90     | 40°02'35.302"N | 104°55'51.187"W | 0.85          |                           |
| 813.00  | 1.020           | 333.380     | 812.92   | -4.13          | 3.98       | -8.76     | 40°02'35.311"N | 104°55'51.198"W | 0.74          |                           |
| 848.00  | 0.930           | 307.490     | 847.91   | -4.59          | 4.44       | -9.12     | 40°02'35.316"N | 104°55'51.202"W | 1.27          | Tie-Into GYRO Surveys     |
| 941.00  | 1.380           | 316.990     | 940.89   | -5.89          | 5.71       | -10.48    | 40°02'35.328"N | 104°55'51.220"W | 0.52          | Begin BHI MWD+IFR Surveys |
| 971.00  | 1.590           | 315.180     | 970.88   | -6.46          | 6.27       | -11.02    | 40°02'35.334"N | 104°55'51.227"W | 0.72          |                           |
| 1063.00 | 1.400           | 318.620     | 1062.85  | -8.24          | 8.02       | -12.67    | 40°02'35.351"N | 104°55'51.248"W | 0.23          |                           |
| 1155.00 | 2.630           | 295.450     | 1154.79  | -10.03         | 9.77       | -15.32    | 40°02'35.369"N | 104°55'51.282"W | 1.58          |                           |
| 1246.00 | 4.760           | 293.730     | 1245.60  | -12.54         | 12.19      | -20.66    | 40°02'35.392"N | 104°55'51.351"W | 2.34          |                           |
| 1338.00 | 6.420           | 293.600     | 1337.16  | -16.28         | 15.79      | -28.87    | 40°02'35.428"N | 104°55'51.456"W | 1.80          |                           |
| 1430.00 | 7.330           | 296.060     | 1428.50  | -21.09         | 20.42      | -38.85    | 40°02'35.474"N | 104°55'51.585"W | 1.04          |                           |
| 1521.00 | 8.530           | 291.460     | 1518.63  | -26.30         | 25.44      | -50.35    | 40°02'35.523"N | 104°55'51.732"W | 1.49          |                           |
| 1613.00 | 9.840           | 292.120     | 1609.44  | -31.99         | 30.90      | -63.98    | 40°02'35.577"N | 104°55'51.908"W | 1.43          |                           |
| 1704.00 | 10.670          | 293.780     | 1698.99  | -38.57         | 37.22      | -78.90    | 40°02'35.640"N | 104°55'52.099"W | 0.97          |                           |
| 1796.00 | 10.190          | 290.730     | 1789.47  | -45.15         | 43.54      | -94.30    | 40°02'35.702"N | 104°55'52.297"W | 0.80          |                           |
| 1888.00 | 10.360          | 290.660     | 1879.99  | -51.21         | 49.34      | -109.65   | 40°02'35.760"N | 104°55'52.495"W | 0.19          |                           |
| 1983.00 | 10.090          | 286.780     | 1973.49  | -56.90         | 54.75      | -125.61   | 40°02'35.813"N | 104°55'52.700"W | 0.78          |                           |
| 2078.00 | 9.910           | 283.890     | 2067.04  | -61.53         | 59.12      | -141.52   | 40°02'35.856"N | 104°55'52.905"W | 0.56          |                           |
| 2172.00 | 10.790          | 284.920     | 2159.51  | -66.02         | 63.33      | -157.87   | 40°02'35.898"N | 104°55'53.115"W | 0.96          |                           |
| 2267.00 | 11.150          | 284.100     | 2252.78  | -70.85         | 67.85      | -175.37   | 40°02'35.943"N | 104°55'53.340"W | 0.41          |                           |
| 2362.00 | 10.590          | 285.550     | 2346.07  | -75.72         | 72.43      | -192.69   | 40°02'35.988"N | 104°55'53.563"W | 0.66          |                           |
| 2457.00 | 9.320           | 287.880     | 2439.64  | -80.69         | 77.13      | -208.42   | 40°02'36.034"N | 104°55'53.765"W | 1.40          |                           |
| 2552.00 | 8.630           | 294.130     | 2533.48  | -86.20         | 82.41      | -222.25   | 40°02'36.086"N | 104°55'53.943"W | 1.26          |                           |
| 2647.00 | 8.370           | 296.310     | 2627.44  | -92.40         | 88.39      | -234.95   | 40°02'36.145"N | 104°55'54.106"W | 0.44          |                           |
| 2742.00 | 8.240           | 296.690     | 2721.44  | -98.73         | 94.51      | -247.23   | 40°02'36.206"N | 104°55'54.264"W | 0.15          |                           |
| 2837.00 | 9.370           | 290.830     | 2815.32  | -104.77        | 100.32     | -260.54   | 40°02'36.263"N | 104°55'54.435"W | 1.52          |                           |
| 2931.00 | 9.190           | 288.440     | 2908.09  | -110.10        | 105.41     | -274.82   | 40°02'36.314"N | 104°55'54.619"W | 0.45          |                           |
| 3026.00 | 9.100           | 287.570     | 3001.88  | -115.02        | 110.08     | -289.17   | 40°02'36.360"N | 104°55'54.803"W | 0.17          |                           |
| 3121.00 | 9.490           | 289.870     | 3095.64  | -120.19        | 115.01     | -303.70   | 40°02'36.409"N | 104°55'54.990"W | 0.57          |                           |
| 3216.00 | 10.400          | 289.470     | 3189.21  | -125.98        | 120.53     | -319.15   | 40°02'36.463"N | 104°55'55.189"W | 0.96          |                           |
| 3311.00 | 9.640           | 288.740     | 3282.76  | -131.66        | 125.95     | -334.77   | 40°02'36.517"N | 104°55'55.389"W | 0.81          |                           |
| 3406.00 | 10.290          | 288.700     | 3376.32  | -137.20        | 131.22     | -350.34   | 40°02'36.569"N | 104°55'55.590"W | 0.68          |                           |
| 3501.00 | 9.870           | 287.700     | 3469.86  | -142.67        | 136.42     | -366.13   | 40°02'36.620"N | 104°55'55.793"W | 0.48          |                           |
| 3596.00 | 10.830          | 288.520     | 3563.31  | -148.25        | 141.73     | -382.35   | 40°02'36.673"N | 104°55'56.001"W | 1.02          |                           |
| 3691.00 | 10.360          | 289.010     | 3656.69  | -154.15        | 147.34     | -398.89   | 40°02'36.728"N | 104°55'56.214"W | 0.50          |                           |
| 3786.00 | 9.950           | 288.570     | 3750.20  | -159.82        | 152.74     | -414.75   | 40°02'36.781"N | 104°55'56.418"W | 0.44          |                           |
| 3881.00 | 9.270           | 287.260     | 3843.87  | -164.96        | 157.63     | -429.84   | 40°02'36.830"N | 104°55'56.612"W | 0.75          |                           |
| 3976.00 | 9.060           | 284.830     | 3937.66  | -169.39        | 161.81     | -444.37   | 40°02'36.871"N | 104°55'56.799"W | 0.46          |                           |



# Actual Wellpath Report

JELTS 36N-19HZ AWP

Page 3 of 6



## REFERENCE WELLPATH IDENTIFICATION

|          |                                 |          |   |
|----------|---------------------------------|----------|---|
| Operator | KERR-MCGEE OIL & GAS ONSHORE LP | Slot     | SLOT#25 JELTS 36N-19HZ (275'FNL & 1888'FEL, SEC.19) |
| Area     | COLORADO                        | Well     | JELTS 36N-19HZ                                      |
| Field    | WELD COUNTY (KERR MCGEE)        | Wellbore | JELTS 36N-19HZ AWB                                  |
| Facility | SEC.19-T1N-R67W                 |          |   |

## WELLPATH DATA (138 stations) † = interpolated/extrapolated station

| MD<br>[ft] | Inclination<br>[°] | Azimuth<br>[°] | TVD<br>[ft] | Vert Sect<br>[ft] | North<br>[ft] | East<br>[ft] | Latitude       | Longitude       | DLS<br>[°/100ft] | Comments        |
|------------|--------------------|----------------|-------------|-------------------|---------------|--------------|----------------|-----------------|------------------|-----------------|
| 4070.00    | 10.100             | 288.430        | 4030.35     | -174.15           | 166.31        | -459.35      | 40°02'36.915"N | 104°55'56.991"W | 1.28             |                 |
| 4165.00    | 10.590             | 292.700        | 4123.80     | -180.42           | 172.31        | -475.30      | 40°02'36.975"N | 104°55'57.196"W | 0.96             |                 |
| 4260.00    | 9.810              | 292.280        | 4217.30     | -187.13           | 178.75        | -490.85      | 40°02'37.038"N | 104°55'57.396"W | 0.82             |                 |
| 4355.00    | 11.440             | 292.240        | 4310.67     | -194.04           | 185.38        | -507.06      | 40°02'37.104"N | 104°55'57.605"W | 1.72             |                 |
| 4450.00    | 11.070             | 292.220        | 4403.84     | -201.35           | 192.40        | -524.22      | 40°02'37.173"N | 104°55'57.825"W | 0.39             |                 |
| 4544.00    | 10.790             | 291.010        | 4496.14     | -208.20           | 198.97        | -540.79      | 40°02'37.238"N | 104°55'58.038"W | 0.39             |                 |
| 4639.00    | 10.140             | 291.210        | 4589.56     | -214.68           | 205.18        | -556.89      | 40°02'37.300"N | 104°55'58.245"W | 0.69             |                 |
| 4734.00    | 8.290              | 289.740        | 4683.33     | -220.27           | 210.52        | -571.13      | 40°02'37.352"N | 104°55'58.428"W | 1.96             |                 |
| 4828.00    | 7.610              | 288.790        | 4776.42     | -224.77           | 214.81        | -583.40      | 40°02'37.395"N | 104°55'58.586"W | 0.74             |                 |
| 4923.00    | 6.700              | 284.860        | 4870.68     | -228.41           | 218.26        | -594.71      | 40°02'37.429"N | 104°55'58.732"W | 1.09             |                 |
| 5018.00    | 5.570              | 288.340        | 4965.14     | -231.45           | 221.13        | -604.45      | 40°02'37.457"N | 104°55'58.857"W | 1.25             |                 |
| 5113.00    | 4.480              | 295.100        | 5059.77     | -234.61           | 224.16        | -612.18      | 40°02'37.487"N | 104°55'58.956"W | 1.30             |                 |
| 5208.00    | 3.250              | 286.500        | 5154.55     | -237.05           | 226.50        | -618.12      | 40°02'37.510"N | 104°55'59.033"W | 1.43             |                 |
| 5303.00    | 1.930              | 264.410        | 5249.46     | -237.73           | 227.11        | -622.30      | 40°02'37.516"N | 104°55'59.086"W | 1.72             |                 |
| 5397.00    | 1.440              | 244.320        | 5343.42     | -237.11           | 226.44        | -624.94      | 40°02'37.510"N | 104°55'59.120"W | 0.81             |                 |
| 5492.00    | 1.050              | 199.290        | 5438.40     | -235.79           | 225.10        | -626.30      | 40°02'37.496"N | 104°55'59.138"W | 1.07             |                 |
| 5587.00    | 0.790              | 105.380        | 5533.39     | -234.79           | 224.11        | -625.96      | 40°02'37.487"N | 104°55'59.133"W | 1.43             |                 |
| 5682.00    | 0.820              | 111.360        | 5628.38     | -234.35           | 223.68        | -624.69      | 40°02'37.482"N | 104°55'59.117"W | 0.09             |                 |
| 5871.00    | 0.550              | 94.190         | 5817.36     | -233.75           | 223.13        | -622.53      | 40°02'37.477"N | 104°55'59.089"W | 0.18             |                 |
| 6251.00    | 1.440              | 37.450         | 6197.31     | -237.33           | 226.78        | -617.81      | 40°02'37.513"N | 104°55'59.029"W | 0.32             |                 |
| 6346.00    | 0.380              | 26.170         | 6292.30     | -238.54           | 228.01        | -616.94      | 40°02'37.525"N | 104°55'59.018"W | 1.13             |                 |
| 6441.00    | 0.300              | 223.620        | 6387.30     | -238.65           | 228.12        | -616.97      | 40°02'37.526"N | 104°55'59.018"W | 0.71             |                 |
| 6631.00    | 0.670              | 243.560        | 6577.29     | -237.81           | 227.26        | -618.31      | 40°02'37.518"N | 104°55'59.035"W | 0.21             |                 |
| 6820.00    | 0.170              | 222.410        | 6766.28     | -237.13           | 226.56        | -619.49      | 40°02'37.511"N | 104°55'59.050"W | 0.27             |                 |
| 7010.00    | 0.090              | 189.710        | 6956.28     | -236.78           | 226.21        | -619.71      | 40°02'37.507"N | 104°55'59.053"W | 0.06             |                 |
| 7022.00    | 0.230              | 161.080        | 6968.28     | -236.75           | 226.17        | -619.70      | 40°02'37.507"N | 104°55'59.053"W | 1.31             |                 |
| 7088.00†   | 2.648              | 186.467        | 7034.26     | -235.11           | 224.53        | -619.83      | 40°02'37.491"N | 104°55'59.055"W | 3.70             | 7" Casing Point |
| 7104.00    | 3.240              | 186.890        | 7050.24     | -234.30           | 223.72        | -619.92      | 40°02'37.483"N | 104°55'59.056"W | 3.70             |                 |
| 7136.00    | 7.910              | 179.350        | 7082.08     | -231.20           | 220.62        | -620.01      | 40°02'37.452"N | 104°55'59.057"W | 14.74            |                 |
| 7168.00    | 10.340             | 180.490        | 7113.67     | -226.13           | 215.54        | -620.01      | 40°02'37.402"N | 104°55'59.057"W | 7.61             |                 |
| 7200.00    | 13.300             | 179.740        | 7144.99     | -219.57           | 208.99        | -620.02      | 40°02'37.337"N | 104°55'59.057"W | 9.26             |                 |
| 7231.00    | 17.700             | 178.790        | 7174.85     | -211.29           | 200.71        | -619.90      | 40°02'37.255"N | 104°55'59.056"W | 14.22            |                 |
| 7263.00    | 22.340             | 177.050        | 7204.91     | -200.34           | 189.76        | -619.48      | 40°02'37.147"N | 104°55'59.050"W | 14.62            |                 |
| 7294.00    | 26.930             | 177.070        | 7233.08     | -187.43           | 176.86        | -618.82      | 40°02'37.020"N | 104°55'59.042"W | 14.81            |                 |
| 7341.00    | 29.410             | 175.170        | 7274.51     | -165.28           | 154.73        | -617.31      | 40°02'36.801"N | 104°55'59.022"W | 5.61             |                 |
| 7389.00    | 32.670             | 175.120        | 7315.63     | -140.59           | 130.07        | -615.21      | 40°02'36.557"N | 104°55'58.995"W | 6.79             |                 |
| 7436.00    | 37.370             | 175.830        | 7354.11     | -113.67           | 103.19        | -613.09      | 40°02'36.292"N | 104°55'58.968"W | 10.04            |                 |
| 7484.00    | 42.830             | 176.400        | 7390.82     | -82.81            | 72.36         | -611.01      | 40°02'35.987"N | 104°55'58.941"W | 11.40            |                 |
| 7531.00    | 47.760             | 177.590        | 7423.87     | -49.43            | 39.01         | -609.27      | 40°02'35.657"N | 104°55'58.919"W | 10.64            |                 |
| 7579.00    | 50.090             | 178.110        | 7455.41     | -13.26            | 2.85          | -607.92      | 40°02'35.300"N | 104°55'58.901"W | 4.92             |                 |
| 7626.00    | 52.290             | 178.510        | 7484.86     | 23.36             | -33.75        | -606.84      | 40°02'34.938"N | 104°55'58.888"W | 4.73             |                 |
| 7674.00    | 55.120             | 178.550        | 7513.27     | 62.04             | -72.42        | -605.85      | 40°02'34.556"N | 104°55'58.875"W | 5.90             |                 |
| 7721.00    | 58.800             | 177.570        | 7538.89     | 101.43            | -111.79       | -604.51      | 40°02'34.167"N | 104°55'58.858"W | 8.02             |                 |
| 7769.00    | 63.130             | 178.140        | 7562.18     | 143.38            | -153.72       | -602.94      | 40°02'33.753"N | 104°55'58.837"W | 9.08             |                 |
| 7816.00    | 66.810             | 179.010        | 7582.07     | 185.95            | -196.29       | -601.89      | 40°02'33.332"N | 104°55'58.824"W | 8.01             |                 |



# Actual Wellpath Report

JELTS 36N-19HZ AWP

Page 4 of 6



## REFERENCE WELLPATH IDENTIFICATION

|          |                                 |          |   |
|----------|---------------------------------|----------|---|
| Operator | KERR-MCGEE OIL & GAS ONSHORE LP | Slot     | SLOT#25 JELTS 36N-19HZ (275'FNL & 1888'FEL, SEC.19) |
| Area     | COLORADO                        | Well     | JELTS 36N-19HZ                                      |
| Field    | WELD COUNTY (KERR MCGEE)        | Wellbore | JELTS 36N-19HZ AWP                                  |
| Facility | SEC.19-T1N-R67W                 |          |   |

## WELLPATH DATA (138 stations)

| MD<br>[ft] | Inclination<br>[°] | Azimuth<br>[°] | TVD<br>[ft] | Vert Sect<br>[ft] | North<br>[ft] | East<br>[ft] | Latitude       | Longitude       | DLS<br>[°/100ft] | Comments |
|------------|--------------------|----------------|-------------|-------------------|---------------|--------------|----------------|-----------------|------------------|----------|
| 7864.00    | 69.910             | 178.600        | 7599.76     | 230.56            | -240.89       | -600.95      | 40°02'32.891"N | 104°55'58.812"W | 6.51             |          |
| 7895.00    | 72.660             | 178.920        | 7609.71     | 259.92            | -270.24       | -600.32      | 40°02'32.601"N | 104°55'58.804"W | 8.92             |          |
| 7927.00    | 75.220             | 178.690        | 7618.56     | 290.67            | -300.98       | -599.68      | 40°02'32.298"N | 104°55'58.795"W | 8.03             |          |
| 7958.00    | 78.840             | 178.750        | 7625.52     | 320.87            | -331.18       | -599.00      | 40°02'31.999"N | 104°55'58.787"W | 11.68            |          |
| 7990.00    | 81.400             | 179.340        | 7631.01     | 352.40            | -362.70       | -598.48      | 40°02'31.688"N | 104°55'58.780"W | 8.20             |          |
| 8022.00    | 83.450             | 179.310        | 7635.23     | 384.12            | -394.41       | -598.11      | 40°02'31.374"N | 104°55'58.775"W | 6.41             |          |
| 8042.00    | 84.570             | 179.080        | 7637.31     | 404.01            | -414.30       | -597.83      | 40°02'31.178"N | 104°55'58.772"W | 5.72             |          |
| 8125.00    | 89.470             | 180.310        | 7641.63     | 486.86            | -497.16       | -597.39      | 40°02'30.359"N | 104°55'58.766"W | 6.09             |          |
| 8157.00    | 89.710             | 181.370        | 7641.86     | 518.84            | -529.16       | -597.86      | 40°02'30.043"N | 104°55'58.772"W | 3.40             |          |
| 8252.00    | 89.870             | 180.330        | 7642.21     | 613.79            | -624.14       | -599.27      | 40°02'29.104"N | 104°55'58.790"W | 1.11             |          |
| 8347.00    | 89.930             | 180.490        | 7642.37     | 708.76            | -719.14       | -599.95      | 40°02'28.165"N | 104°55'58.799"W | 0.18             |          |
| 8442.00    | 90.550             | 180.970        | 7641.97     | 803.72            | -814.13       | -601.16      | 40°02'27.226"N | 104°55'58.814"W | 0.83             |          |
| 8537.00    | 90.510             | 182.690        | 7641.09     | 898.60            | -909.08       | -604.19      | 40°02'26.288"N | 104°55'58.853"W | 1.81             |          |
| 8631.00    | 90.060             | 181.860        | 7640.63     | 992.44            | -1003.00      | -607.92      | 40°02'25.360"N | 104°55'58.901"W | 1.00             |          |
| 8726.00    | 89.720             | 181.170        | 7640.81     | 1087.35           | -1097.97      | -610.43      | 40°02'24.422"N | 104°55'58.933"W | 0.81             |          |
| 8821.00    | 89.450             | 182.200        | 7641.50     | 1182.25           | -1192.92      | -613.23      | 40°02'23.483"N | 104°55'58.969"W | 1.12             |          |
| 8915.00    | 89.660             | 180.350        | 7642.23     | 1276.17           | -1286.89      | -615.32      | 40°02'22.555"N | 104°55'58.996"W | 1.98             |          |
| 9010.00    | 89.900             | 180.000        | 7642.59     | 1371.15           | -1381.89      | -615.61      | 40°02'21.616"N | 104°55'59.000"W | 0.45             |          |
| 9105.00    | 89.780             | 178.840        | 7642.86     | 1466.14           | -1476.88      | -614.65      | 40°02'20.677"N | 104°55'58.987"W | 1.23             |          |
| 9200.00    | 90.950             | 177.620        | 7642.25     | 1561.13           | -1571.83      | -611.71      | 40°02'19.739"N | 104°55'58.950"W | 1.78             |          |
| 9295.00    | 90.920             | 178.160        | 7640.70     | 1656.10           | -1666.75      | -608.21      | 40°02'18.801"N | 104°55'58.905"W | 0.57             |          |
| 9389.00    | 90.610             | 178.160        | 7639.45     | 1750.08           | -1760.70      | -605.20      | 40°02'17.872"N | 104°55'58.866"W | 0.33             |          |
| 9484.00    | 90.210             | 178.530        | 7638.77     | 1845.07           | -1855.65      | -602.45      | 40°02'16.934"N | 104°55'58.831"W | 0.57             |          |
| 9579.00    | 90.790             | 177.780        | 7637.94     | 1940.05           | -1950.60      | -599.39      | 40°02'15.996"N | 104°55'58.791"W | 1.00             |          |
| 9674.00    | 91.750             | 178.640        | 7635.83     | 2035.02           | -2045.53      | -596.43      | 40°02'15.057"N | 104°55'58.753"W | 1.36             |          |
| 9769.00    | 92.120             | 178.920        | 7632.62     | 2129.96           | -2140.45      | -594.41      | 40°02'14.119"N | 104°55'58.727"W | 0.49             |          |
| 9864.00    | 91.620             | 177.770        | 7629.52     | 2224.90           | -2235.36      | -591.66      | 40°02'13.182"N | 104°55'58.692"W | 1.32             |          |
| 9959.00    | 90.730             | 177.840        | 7627.58     | 2319.86           | -2330.27      | -588.03      | 40°02'12.244"N | 104°55'58.645"W | 0.94             |          |
| 10054.00   | 89.220             | 177.210        | 7627.62     | 2414.83           | -2425.18      | -583.92      | 40°02'11.306"N | 104°55'58.592"W | 1.72             |          |
| 10149.00   | 89.690             | 177.880        | 7628.52     | 2509.79           | -2520.09      | -579.85      | 40°02'10.368"N | 104°55'58.540"W | 0.86             |          |
| 10243.00   | 90.490             | 177.800        | 7628.37     | 2603.77           | -2614.02      | -576.31      | 40°02'09.440"N | 104°55'58.494"W | 0.86             |          |
| 10338.00   | 88.520             | 177.380        | 7629.19     | 2698.73           | -2708.93      | -572.32      | 40°02'08.502"N | 104°55'58.443"W | 2.12             |          |
| 10433.00   | 88.300             | 177.580        | 7631.83     | 2793.66           | -2803.80      | -568.14      | 40°02'07.564"N | 104°55'58.389"W | 0.31             |          |
| 10528.00   | 88.050             | 177.700        | 7634.86     | 2888.58           | -2898.67      | -564.23      | 40°02'06.627"N | 104°55'58.339"W | 0.29             |          |
| 10623.00   | 87.990             | 177.190        | 7638.14     | 2983.49           | -2993.52      | -560.00      | 40°02'05.689"N | 104°55'58.284"W | 0.54             |          |
| 10718.00   | 88.480             | 177.980        | 7641.06     | 3078.42           | -3088.39      | -556.00      | 40°02'04.752"N | 104°55'58.233"W | 0.98             |          |
| 10813.00   | 89.470             | 178.890        | 7642.76     | 3173.39           | -3183.33      | -553.40      | 40°02'03.813"N | 104°55'58.200"W | 1.42             |          |
| 10907.00   | 88.520             | 178.880        | 7644.41     | 3267.38           | -3277.30      | -551.58      | 40°02'02.885"N | 104°55'58.176"W | 1.01             |          |
| 11002.00   | 89.410             | 179.820        | 7646.13     | 3362.36           | -3372.28      | -550.50      | 40°02'01.946"N | 104°55'58.162"W | 1.36             |          |
| 11097.00   | 90.670             | 180.830        | 7646.06     | 3457.33           | -3467.27      | -551.04      | 40°02'01.007"N | 104°55'58.169"W | 1.70             |          |
| 11192.00   | 90.360             | 181.080        | 7645.21     | 3552.27           | -3562.26      | -552.62      | 40°02'00.069"N | 104°55'58.189"W | 0.42             |          |
| 11381.00   | 89.780             | 181.120        | 7644.98     | 3741.15           | -3751.22      | -556.25      | 40°01'58.201"N | 104°55'58.236"W | 0.31             |          |
| 11571.00   | 89.590             | 182.290        | 7646.02     | 3930.93           | -3941.13      | -561.90      | 40°01'56.325"N | 104°55'58.309"W | 0.62             |          |
| 11761.00   | 91.330             | 179.010        | 7644.50     | 4120.82           | -4131.08      | -564.06      | 40°01'54.448"N | 104°55'58.336"W | 1.95             |          |
| 11951.00   | 92.430             | 180.040        | 7638.26     | 4310.70           | -4320.96      | -562.48      | 40°01'52.571"N | 104°55'58.316"W | 0.79             |          |



# Actual Wellpath Report

## JELTS 36N-19HZ AWP

Page 5 of 6



### REFERENCE WELLPATH IDENTIFICATION

|          |                                 |          |   |
|----------|---------------------------------|----------|---|
| Operator | KERR-MCGEE OIL & GAS ONSHORE LP | Slot     | SLOT#25 JELTS 36N-19HZ (275'FNL & 1888'FEL, SEC.19) |
| Area     | COLORADO                        | Well     | JELTS 36N-19HZ                                      |
| Field    | WELD COUNTY (KERR MCGEE)        | Wellbore | JELTS 36N-19HZ AWB                                  |
| Facility | SEC.19-T1N-R67W                 |          |   |

### WELLPATH DATA (138 stations)

| MD [ft]  | Inclination [°] | Azimuth [°] | TVD [ft] | Vert Sect [ft] | North [ft] | East [ft] | Latitude       | Longitude       | DLS [°/100ft] | Comments                 |
|----------|-----------------|-------------|----------|----------------|------------|-----------|----------------|-----------------|---------------|--------------------------|
| 12045.00 | 92.430          | 179.820     | 7634.28  | 4404.60        | -4414.88   | -562.37   | 40°01'51.643"N | 104°55'58.314"W | 0.23          |                          |
| 12095.00 | 92.860          | 179.920     | 7631.97  | 4454.54        | -4464.83   | -562.25   | 40°01'51.149"N | 104°55'58.313"W | 0.88          | Last BHI MWD+IFR Surveys |
| 12152.00 | 92.860          | 179.920     | 7629.13  | 4511.47        | -4521.75   | -562.17   | 40°01'50.587"N | 104°55'58.312"W | 0.00          | Projection to Bit        |

### HOLE & CASING SECTIONS - Ref Wellbore: JELTS 36N-19HZ AWB Ref Wellpath: JELTS 36N-19HZ AWP

| String/Diameter         | Start MD [ft] | End MD [ft] | Interval [ft] | Start TVD [ft] | End TVD [ft] | Start N/S [ft] | Start E/W [ft] | End N/S [ft] | End E/W [ft] |
|-------------------------|---------------|-------------|---------------|----------------|--------------|----------------|----------------|--------------|--------------|
| 13.5in Open Hole        | 13.00         | 925.00      | 912.00        | 13.00          | 924.90       | 0.00           | 0.00           | 5.44         | -10.23       |
| 9.625in Casing Surface  | 13.00         | 925.00      | 912.00        | 13.00          | 924.90       | 0.00           | 0.00           | 5.44         | -10.23       |
| 8.75in Open Hole        | 925.00        | 8100.00     | 7175.00       | 924.90         | 7641.07      | 5.44           | -10.23         | -472.17      | -597.33      |
| 7in Casing Intermediate | 13.00         | 8088.00     | 8075.00       | 13.00          | 7640.58      | 0.00           | 0.00           | -460.18      | -597.36      |
| 6.125in Open Hole       | 8100.00       | 12152.00    | 4052.00       | 7641.07        | 7629.13      | -472.17        | -597.33        | -4521.75     | -562.17      |

### TARGETS

| Name  | MD [ft] | TVD [ft] | North [ft] | East [ft] | Grid East [US ft] | Grid North [US ft] | Latitude       | Longitude       | Shape   |
|---|---------|----------|------------|-----------|-------------------|--------------------|----------------|-----------------|---------|
| SECTION 19 LINES  |         | 27.00    | -38.57     | -2052.08  | 3157293.83        | 1259018.03         | 40°02'34.890"N | 104°56'17.470"W | polygon |
| JELTS 39N-19HZ LAND BOX                                       |         | 5160.00  | 0.00       | 0.00      | 3159345.53        | 1259069.77         | 40°02'35.272"N | 104°55'51.085"W | polygon |
| JELTS 36N-19HZ BHL ON PLAT REV-1 (460'FSL & 2510'FEL, SEC.19) |         | 7646.00  | -4546.00   | -539.65   | 3158835.09        | 1254520.57         | 40°01'50.347"N | 104°55'58.022"W | point   |
| SEC. 19 HARDLINES (460' SETBACKS)                             |         | 8027.00  | -38.57     | -2052.08  | 3157293.83        | 1259018.03         | 40°02'34.890"N | 104°56'17.470"W | polygon |

### WELLPATH COMPOSITION - Ref Wellbore: JELTS 36N-19HZ AWB Ref Wellpath: JELTS 36N-19HZ AWP

| Start MD [ft] | End MD [ft] | Positional Uncertainty Model         | Log Name/Comment                          | Wellbore           |
|---------------|-------------|--------------------------------------|---|--------------------|
| 13.00         | 848.00      | Generic gyro - continuous (Standard) | MS ENERGY SERVICES GYRO SURVEYS <113-848> | JELTS 36N-19HZ AWB |
| 848.00        | 8042.00     | NaviTrak (MagCorr)                   | BHI MWD SURVEYS 8 3/4" HOLE <941-7022>    | JELTS 36N-19HZ AWB |
| 8042.00       | 12095.00    | OnTrak (MagCorr)                     | BHI MWD SURVEYS 6 1/8" HOLE <7104-8125>   | JELTS 36N-19HZ AWB |
| 12095.00      | 12152.00    | Blind Drilling (std)                 | Projection to bit                         | JELTS 36N-19HZ AWB |



# Actual Wellpath Report

JELTS 36N-19HZ AWP

Page 6 of 6



| REFERENCE WELLPATH IDENTIFICATION |                                 |          |   |  |
|-----------------------------------|---------------------------------|----------|---|--|
| Operator                          | KERR-MCGEE OIL & GAS ONSHORE LP | Slot     | SLOT#25 JELTS 36N-19HZ (275'FNL & 1888'FEL, SEC.19) |  |
| Area                              | COLORADO                        | Well     | JELTS 36N-19HZ                                      |  |
| Field                             | WELD COUNTY (KERR MCGEE)        | Wellbore | JELTS 36N-19HZ AWP                                  |  |
| Facility                          | SEC.19-T1N-R67W                 |          |   |  |

| WELLPATH COMMENTS |                    |                |             |                           |
|-------------------|--------------------|----------------|-------------|---------------------------|
| MD<br>[ft]        | Inclination<br>[°] | Azimuth<br>[°] | TVD<br>[ft] | Comment                   |
| 13.00             | 0.000              | 282.080        | 13.00       | Tie-On                    |
| 113.00            | 0.650              | 282.080        | 113.00      | Begin GYRO Surveys        |
| 848.00            | 0.930              | 307.490        | 847.91      | Tie-Into GYRO Surveys     |
| 941.00            | 1.380              | 316.990        | 940.89      | Begin BHI MWD+IFR Surveys |
| 7088.00           | 2.648              | 186.467        | 7034.26     | 7" Casing Point           |
| 12095.00          | 92.860             | 179.920        | 7631.97     | Last BHI MWD+IFR Surveys  |
| 12152.00          | 92.860             | 179.920        | 7629.13     | Projection to Bit         |