



Weatherford®

Compact Micro-Imager Image Only

COMPANY: KINDER MORGAN C02 Co. L.P

WELL: YB-6

FIELD: MCELMO DOME

COUNTY: MONTEZUMA

STATE: COLORADO

Location: SHL: 1111 FSL & 812 FWL

Latitude: 37.4537
Longitude: -108.78929

API: 05-083-06696

Other Services:
COMPENSATED DENSITY
COMPENSATED NEUTRON
SPECTRAL GAMMA RAY
DUAL LATEROLOG
MICRO RESISTIVITY

Permanent Datum: GL Elevation: 6596.00 ft

Log measured from KB 31.00 ft above Permanent Datum

Drilling measured from KB

Elevations: K.B.: 6621.00 ft

D.F.:
G.L.: 6596.00 ft

Date	2-FEB-2013
Run Number	FOUR
Service Order	3524938
Depth Driller	8100.00 ft
Depth Logger	8136.00 ft
First Reading	8135.00 ft
Last Reading	7899.00 ft
Casing Driller	9.625 in @ 7890.00 ft
Casing Logger	7890.00 ft
Bit Size	6.00 in
Hole Fluid Type	H2O
Density	8.65 g/c3
Viscosity	60.00 CP
pH	9.00
Fluid Loss	
Sample Source	FLOW LINE
Rm @ Measured Temperature	0.040 ohm-m @ 40.00° F
Rmf @ Measured Temperature	0.032 ohm-m @ 40.00° F
Rmc @ Measured Temperature	0.048 ohm-m @ 40.00° F
Source Rmf	CALC
Rm @ BHT	0.013 ohm-m @ 147.00° F
Time Since Circulation	6 HOURS
Maximum Recorded Temperature	147.00° F @
Equipment No.	13045
Location	GJ/CO
Recorded By	M.RICHINS
Witnessed By	P.BLACKMER

All interpretation of log data are opinions based on inferences from electrical or other measurements. We do not guarantee the accuracy or correctness of any interpretation or recommendation and we shall not be liable or responsible for any loss, cost, damages or expenses incurred or sustained by anyone resulting from any interpretation or recommendation made by any of our employees or agents.

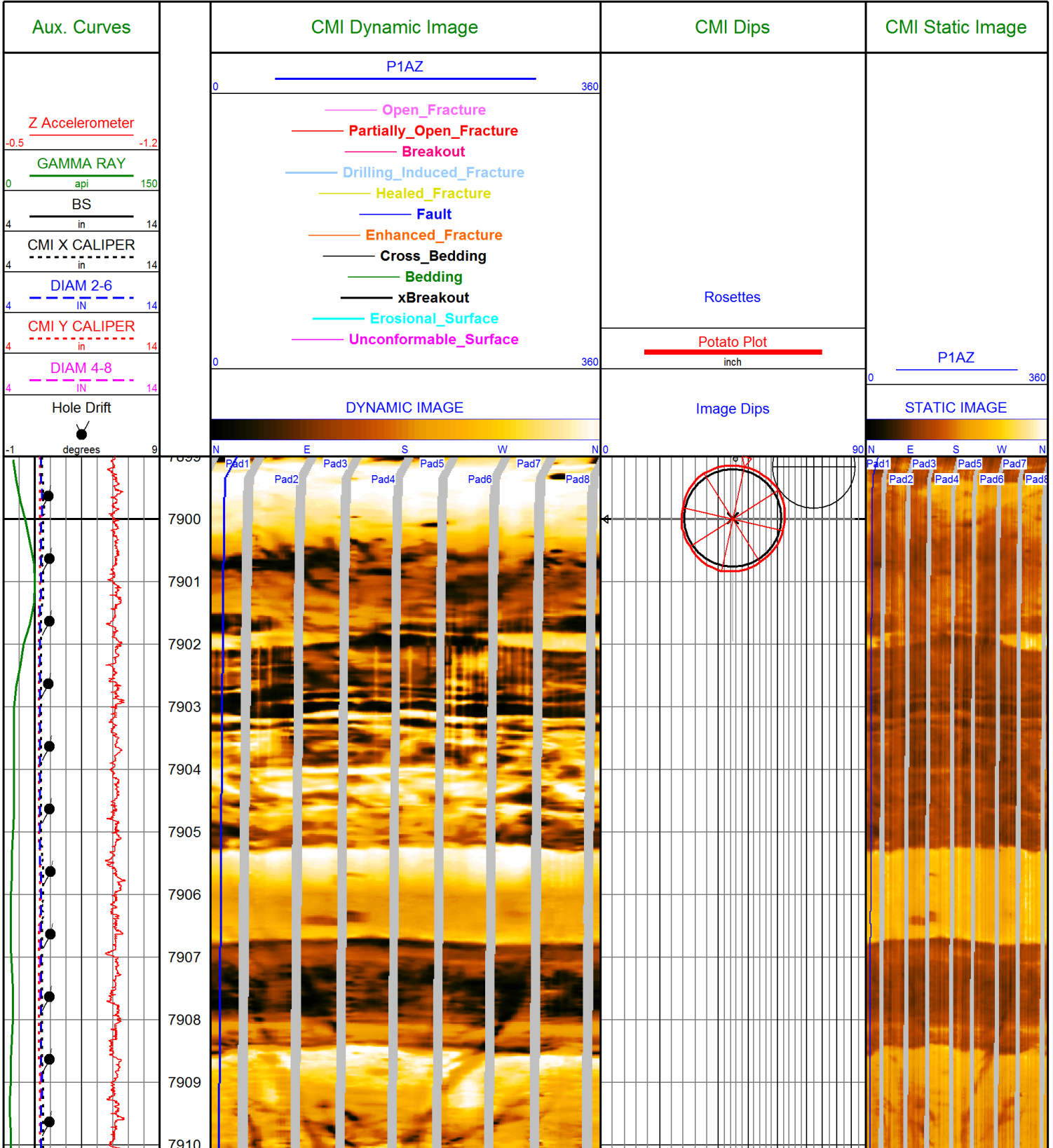
Rig: NABORS 405	Remarks:	Service Order #	3524938
Drilling Stopped	CMI PASS DEPTH CORRECTED TO OPEN HOLE GAMMA RAY TIGHT PULLS, BOREHOLE SIZE AND RUGOSITY WILL AFFECT DATA QUALITY		
Circulation Stopped	6 HOURS		
Tool on Bottom			
BHT	147.00° F		

Equipment Data

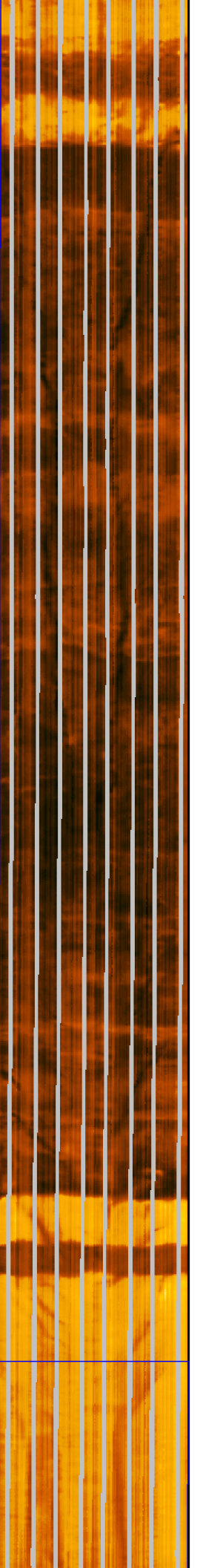
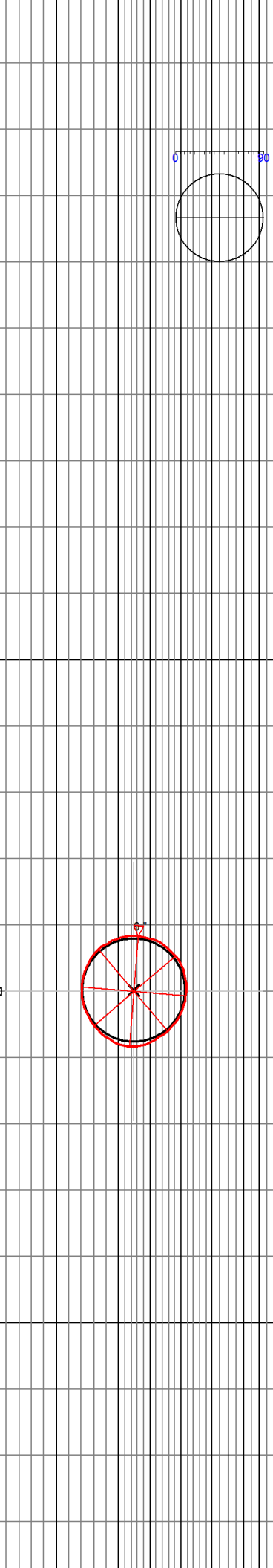
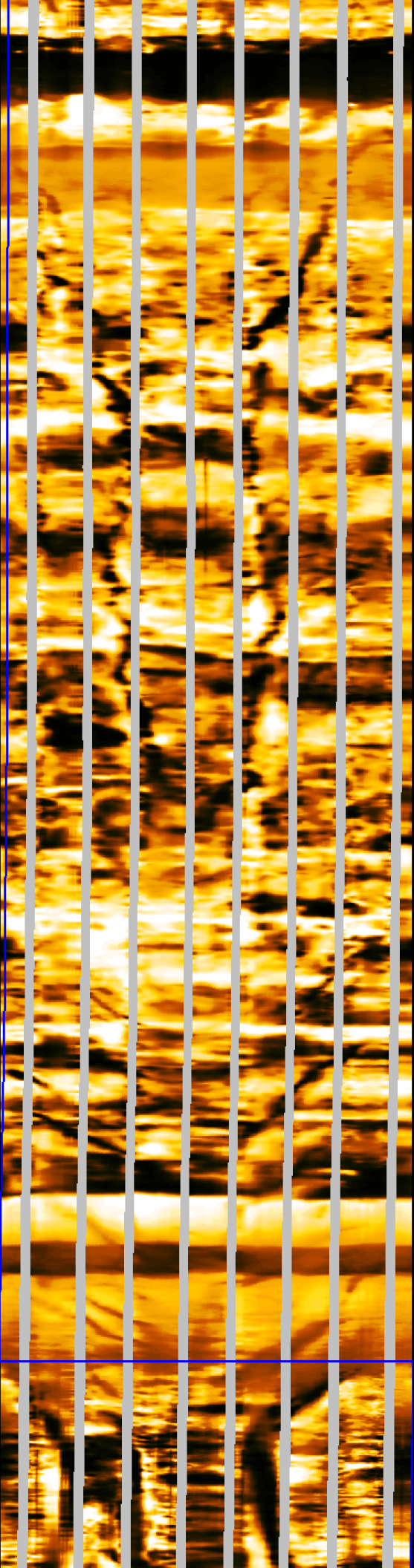
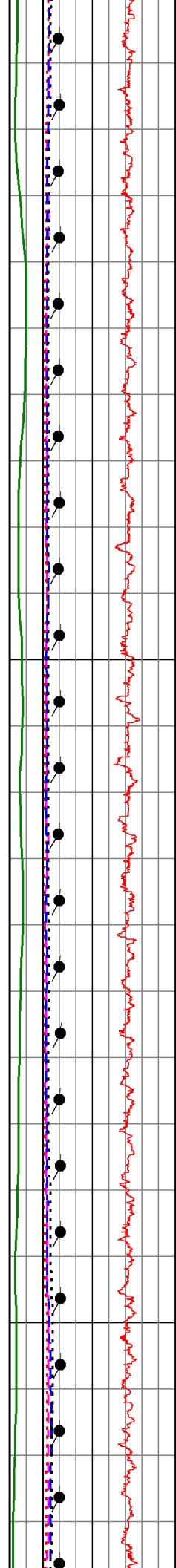
Tool Type	Tool Type	Other
MIE-A.A 207 MIM-A.A 207		PROCESSED BY J. TURNER

CORRELATION PARAMETERS

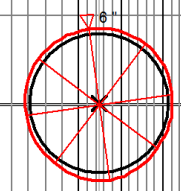
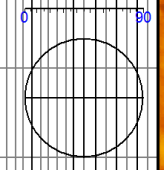
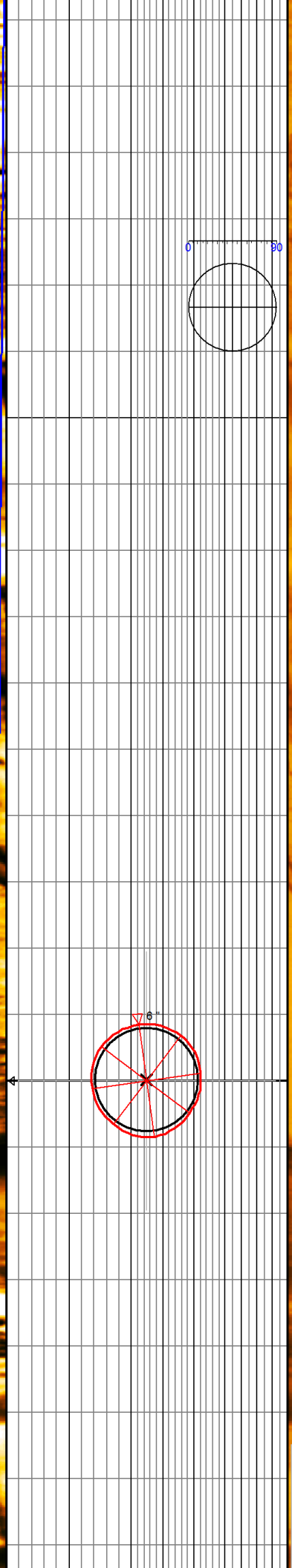
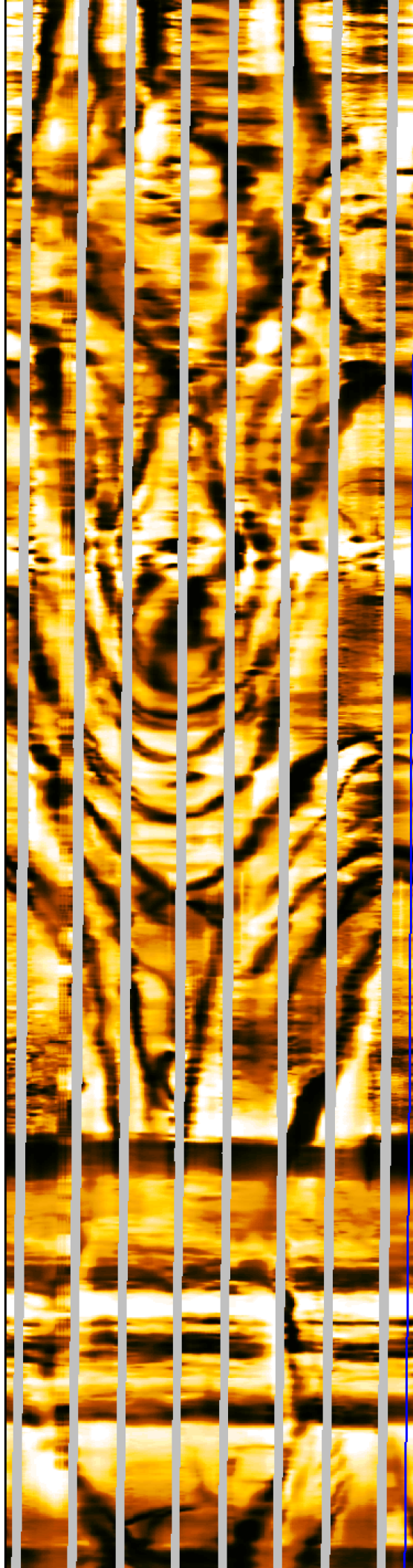
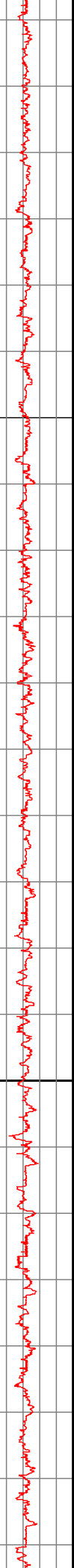
All Dips Interactively Edited From Image
 Magnetic Declination : 10.22 degrees



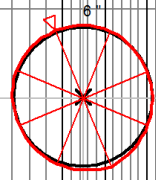
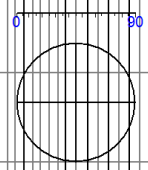
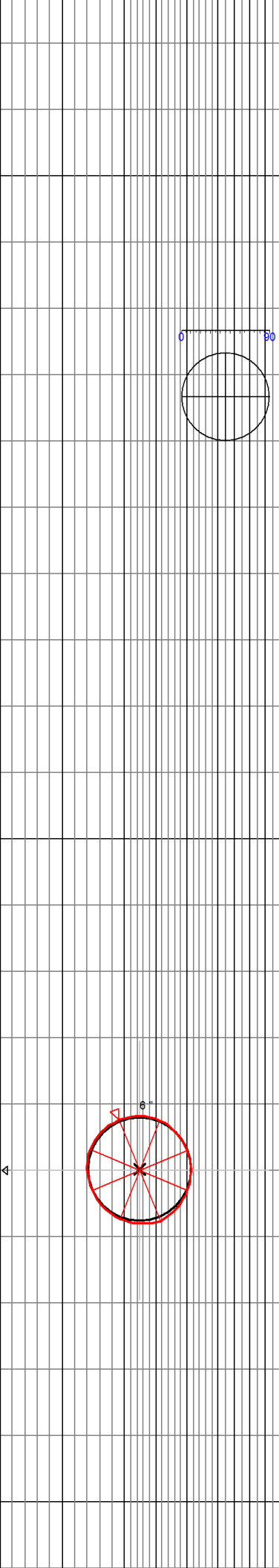
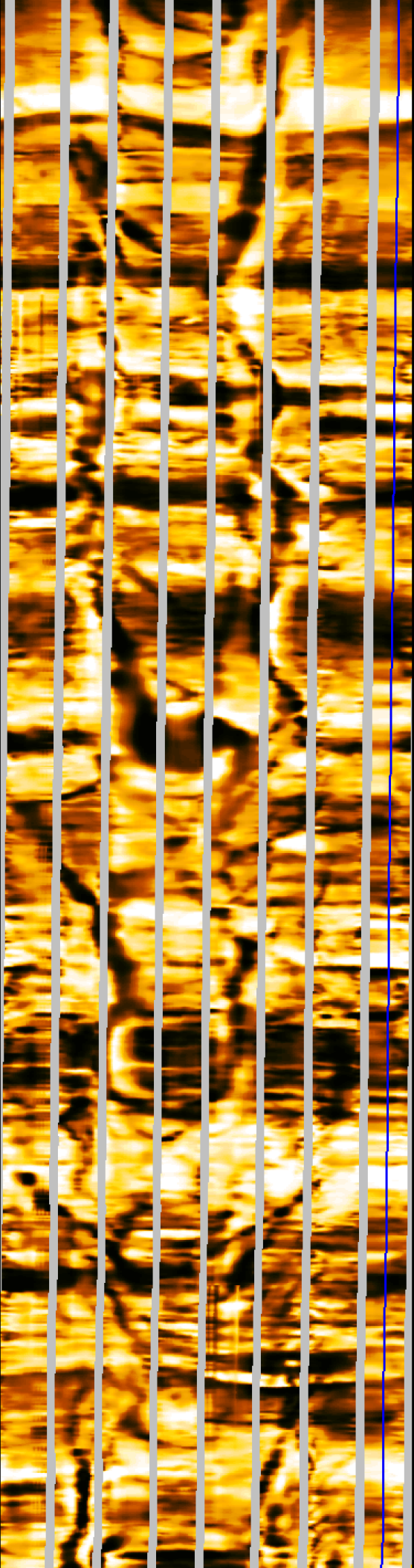
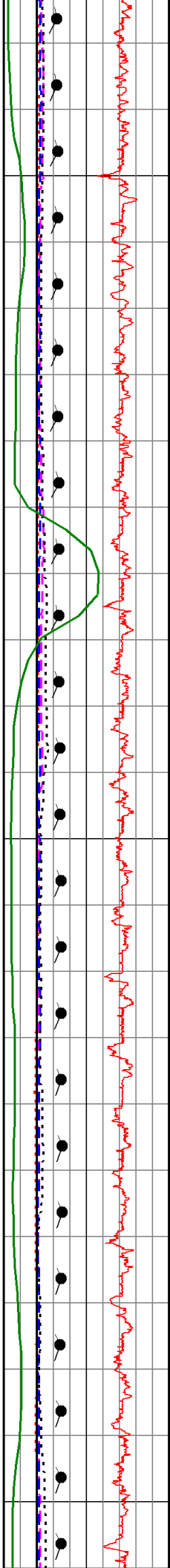
7911
7912
7913
7914
7915
7916
7917
7918
7919
7920
7921
7922
7923
7924
7925
7926
7927
7928
7929
7930
7931
7932
7933

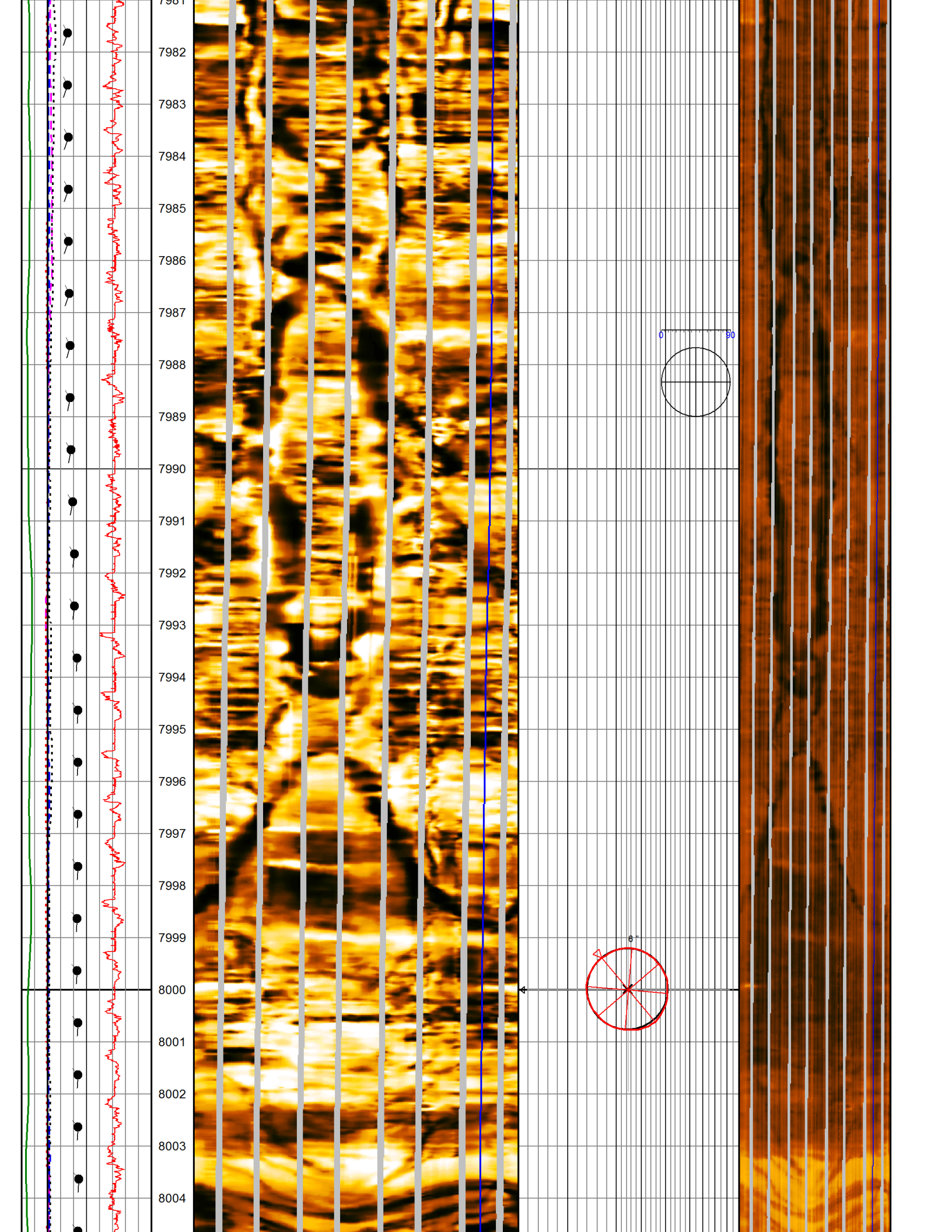


7934
7935
7936
7937
7938
7939
7940
7941
7942
7943
7944
7945
7946
7947
7948
7949
7950
7951
7952
7953
7954
7955
7956
7957

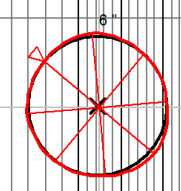
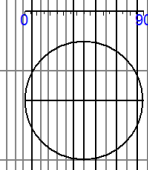
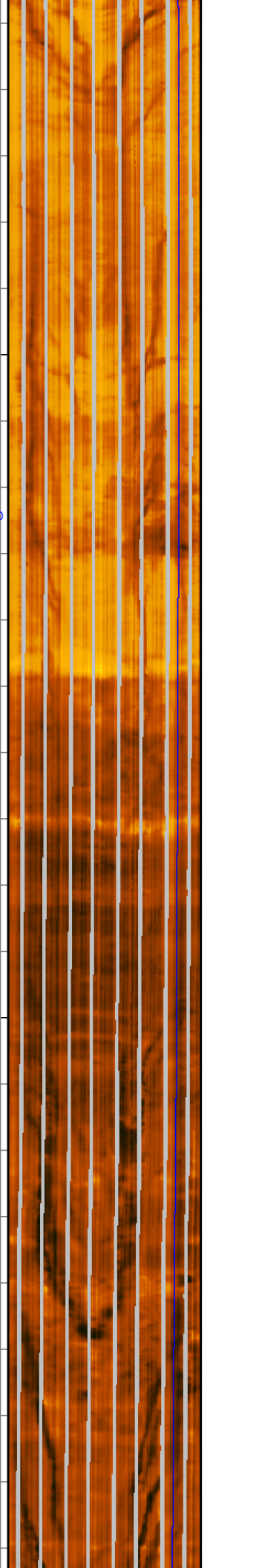
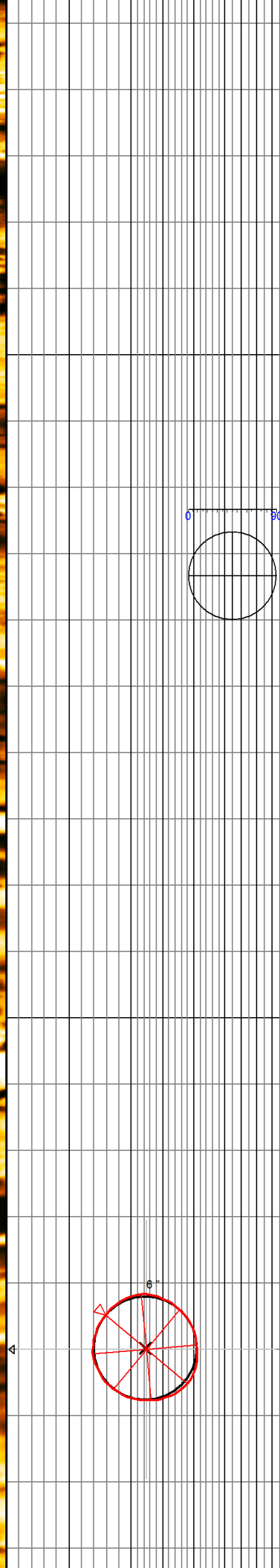
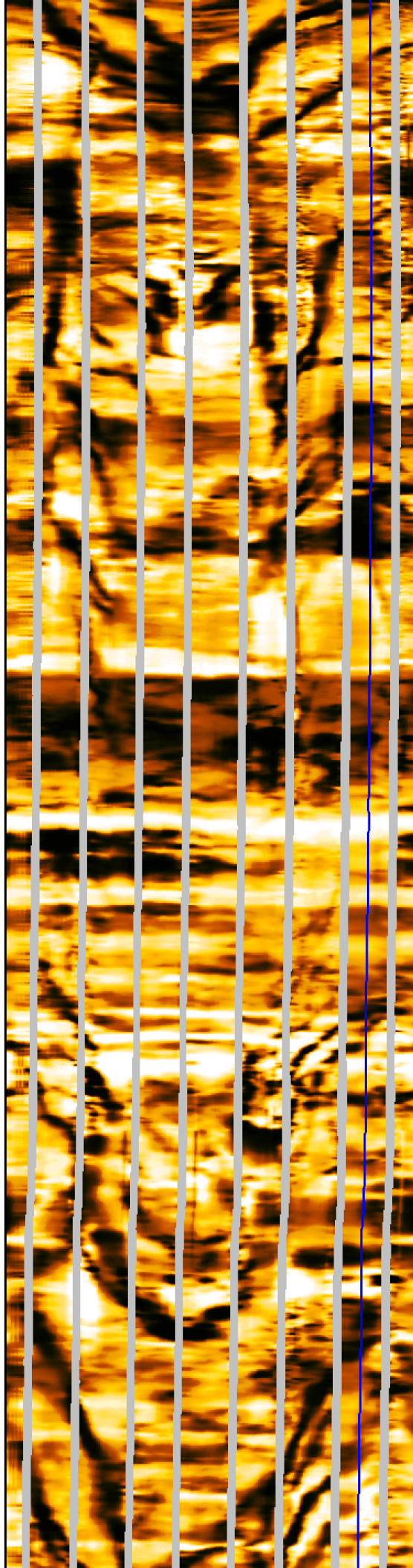
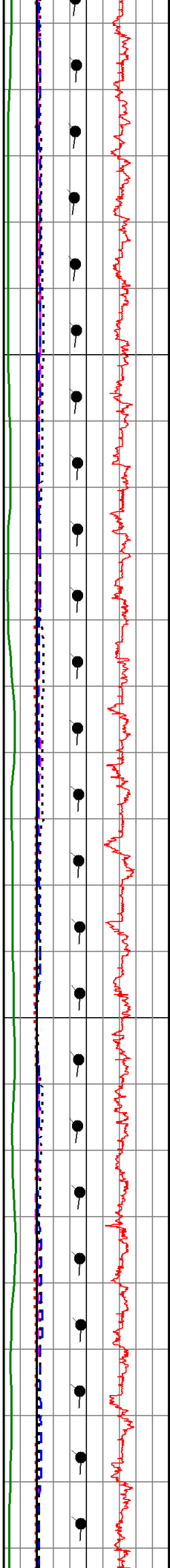


7958
7959
7960
7961
7962
7963
7964
7965
7966
7967
7968
7969
7970
7971
7972
7973
7974
7975
7976
7977
7978
7979
7980
7981

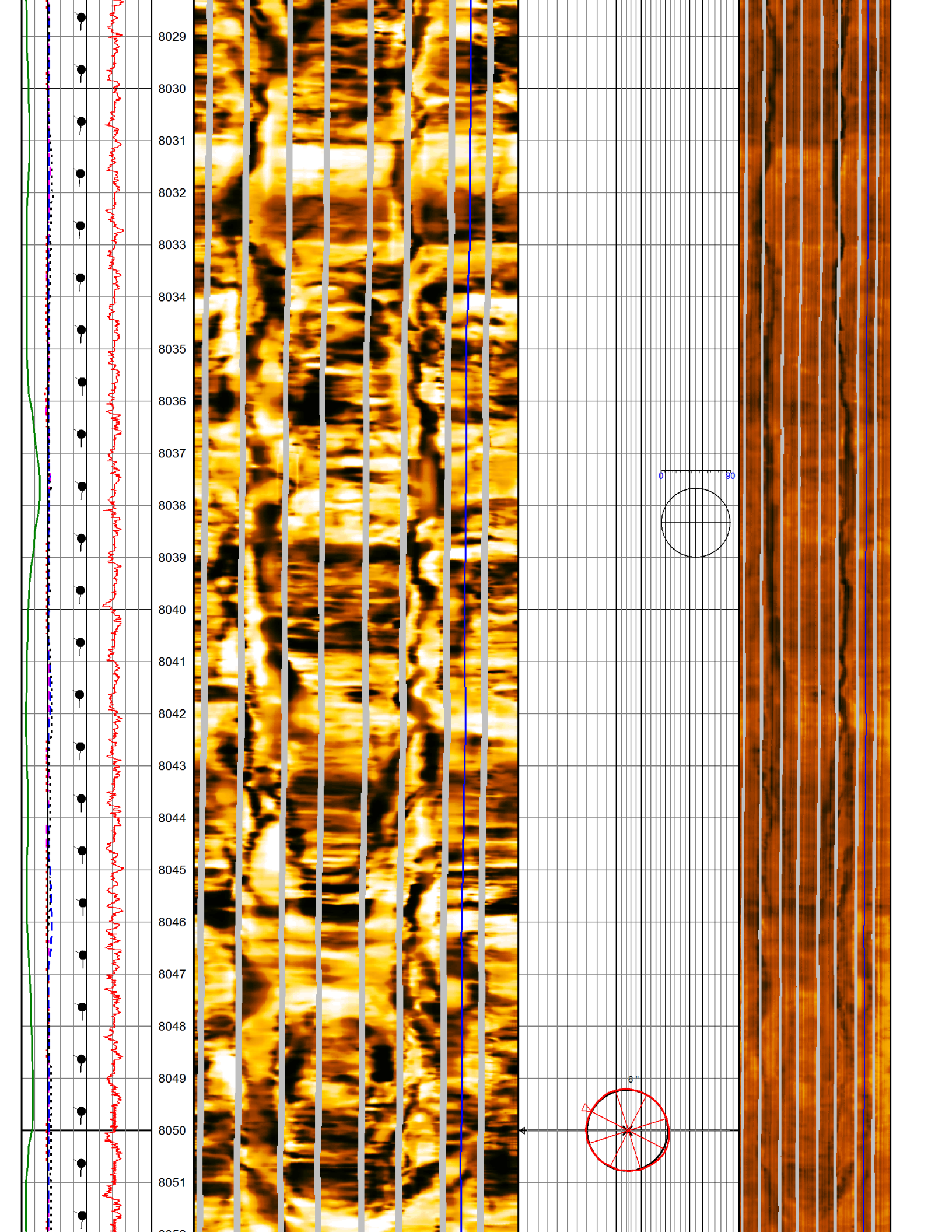


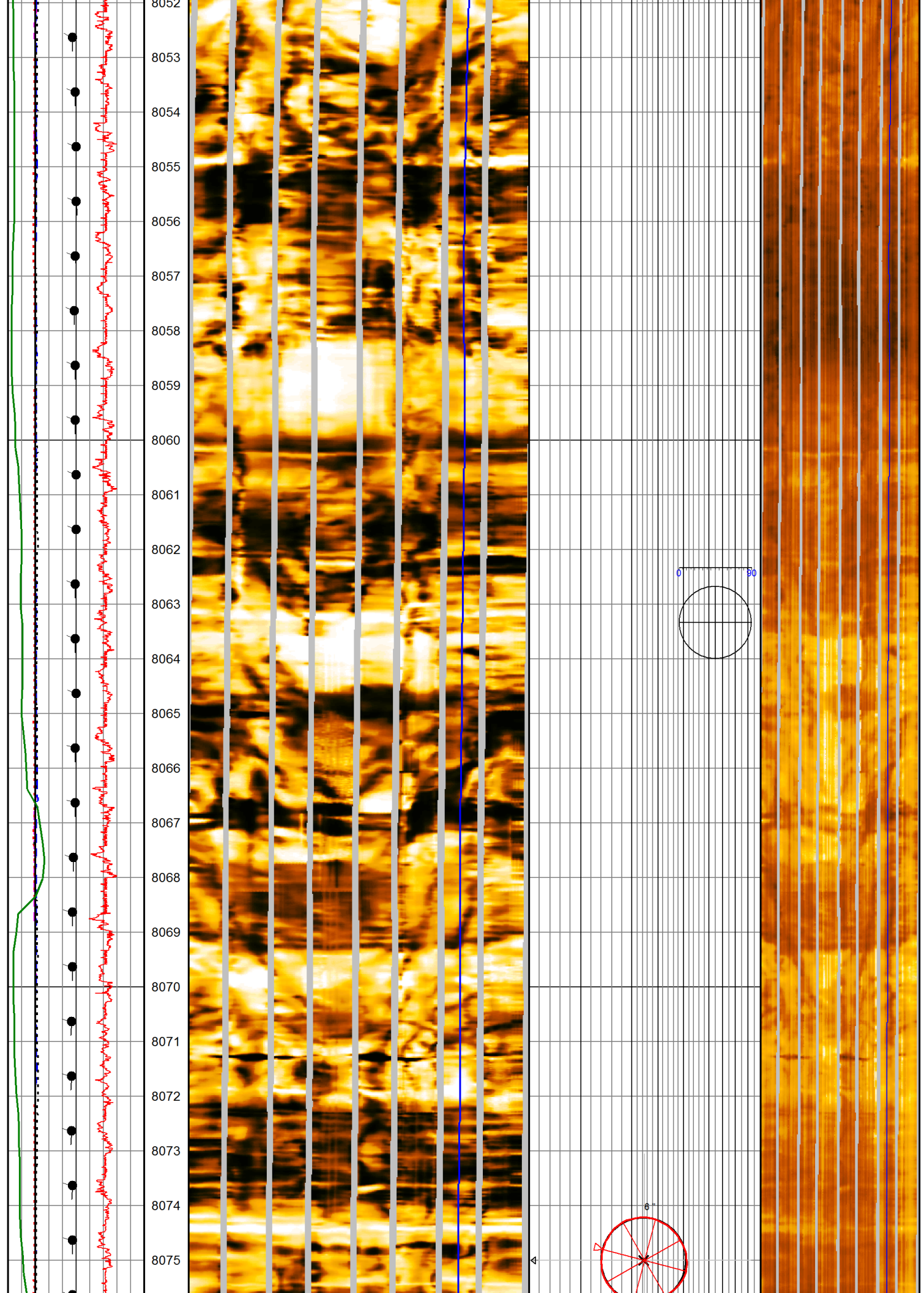


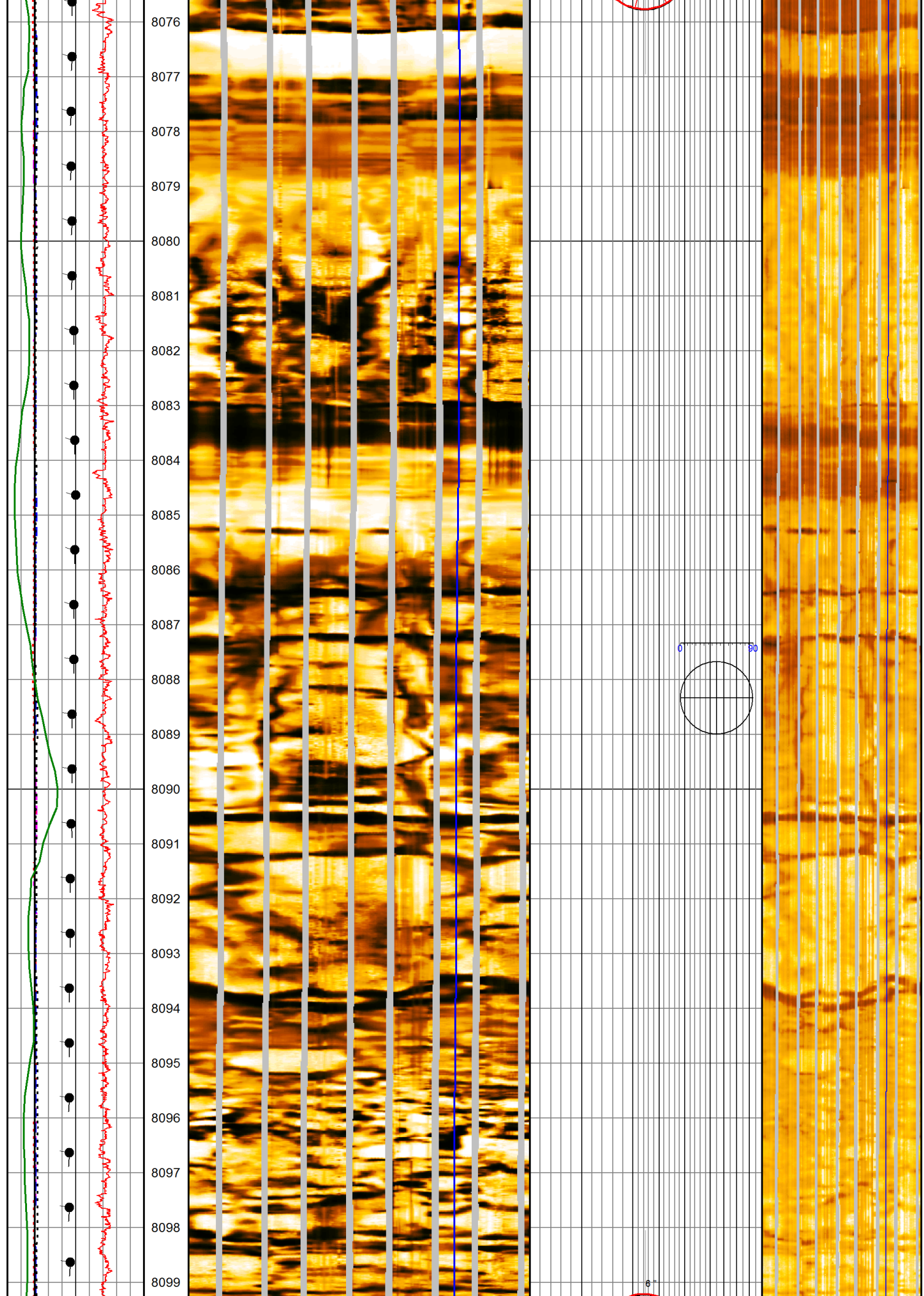
8005
8006
8007
8008
8009
8010
8011
8012
8013
8014
8015
8016
8017
8018
8019
8020
8021
8022
8023
8024
8025
8026
8027
8028

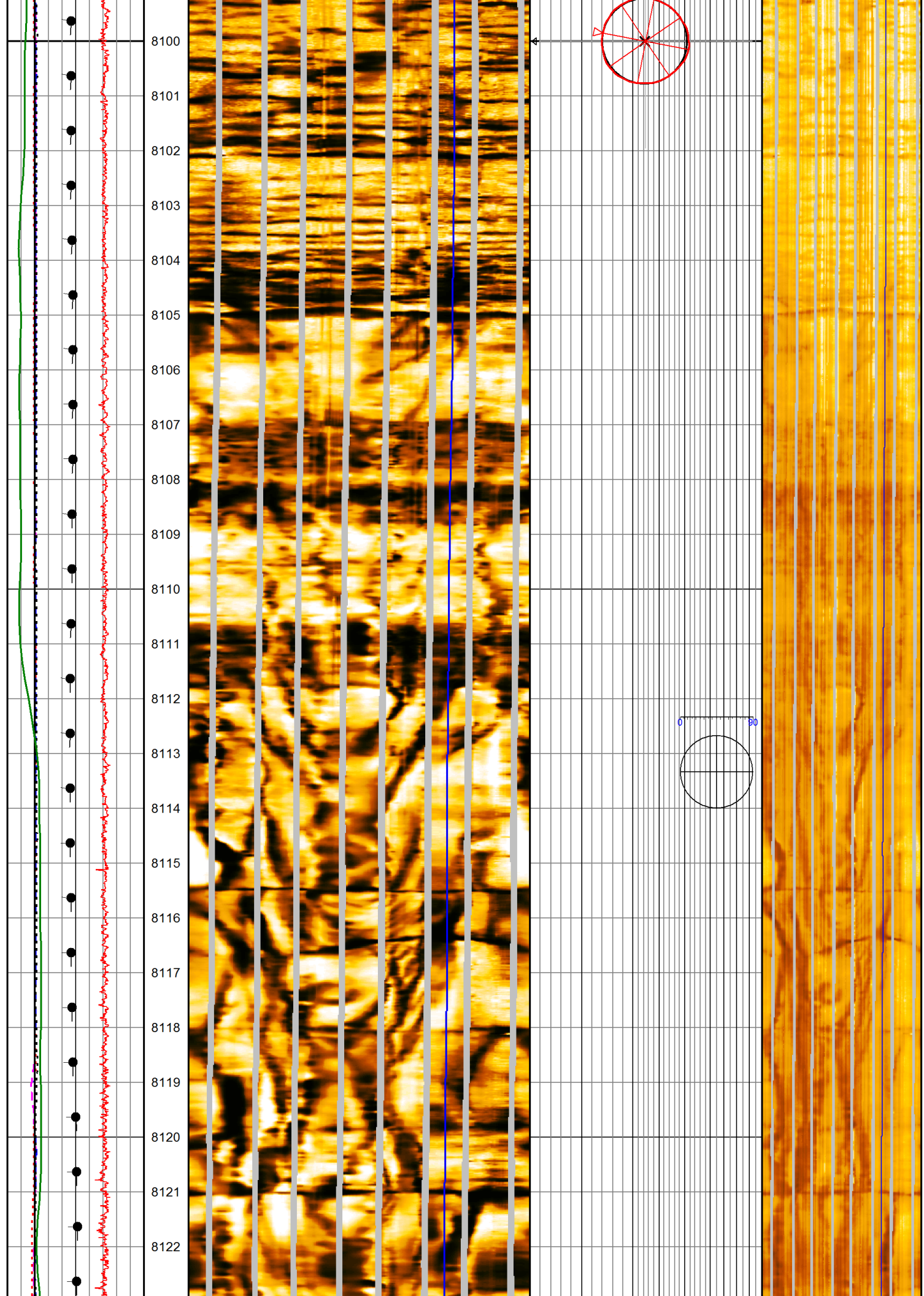


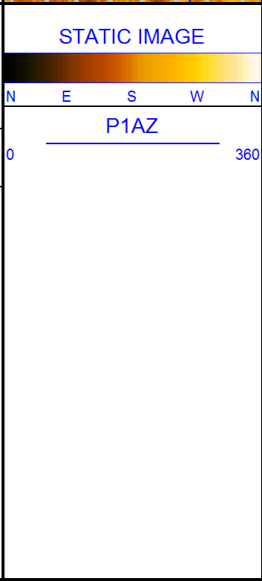
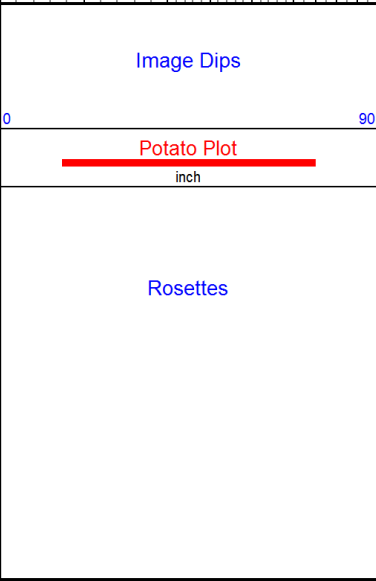
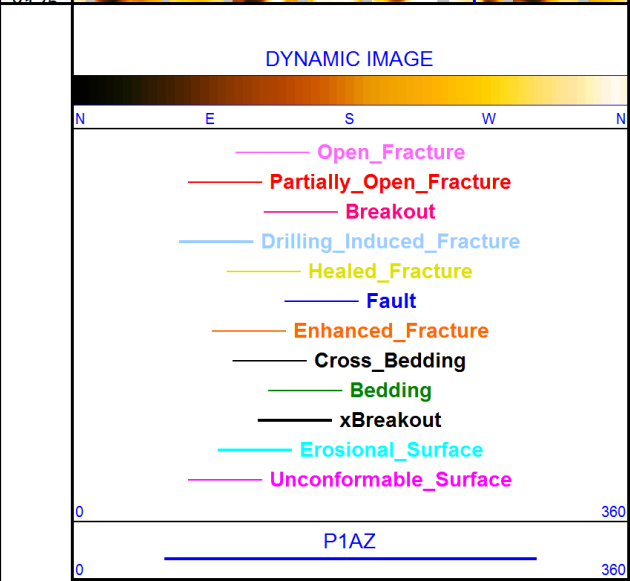
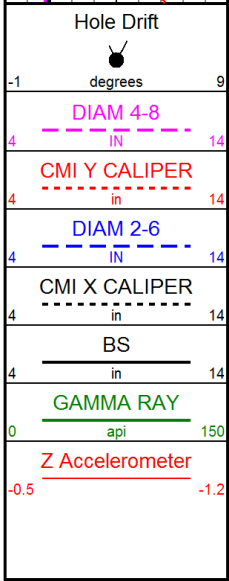
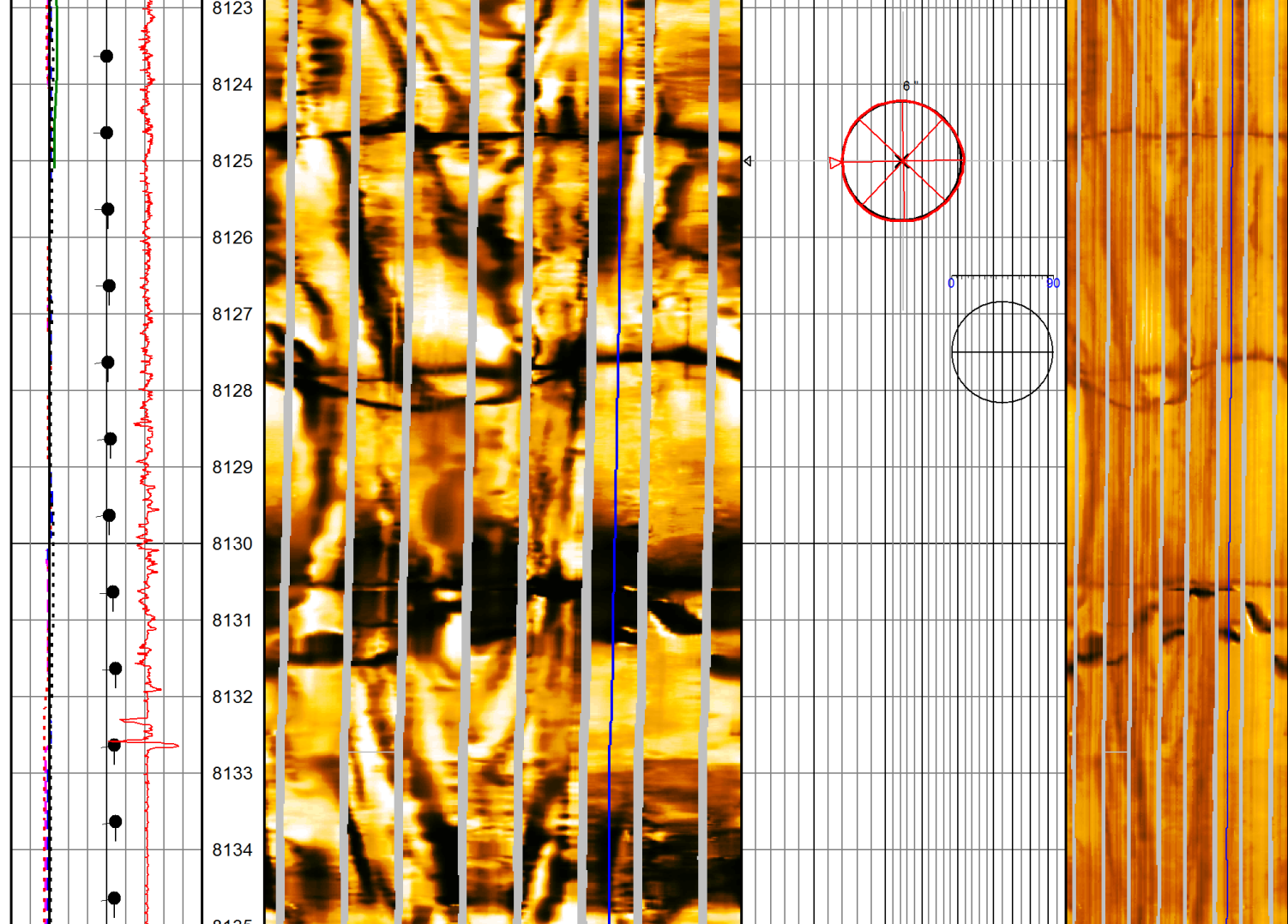
4











Aux. Curves

CMI Dynamic Image

CMI Dips

CMI Static Image

COMPANY: KINDER MORGAN C02 Co. L.P
 WELL: YB-6
 FIELD: McELMO DOME
 COUNTY: MONTEZUMA
 STATE: COLORADO



Weatherford®

Compact Micro-Imager
Image Only