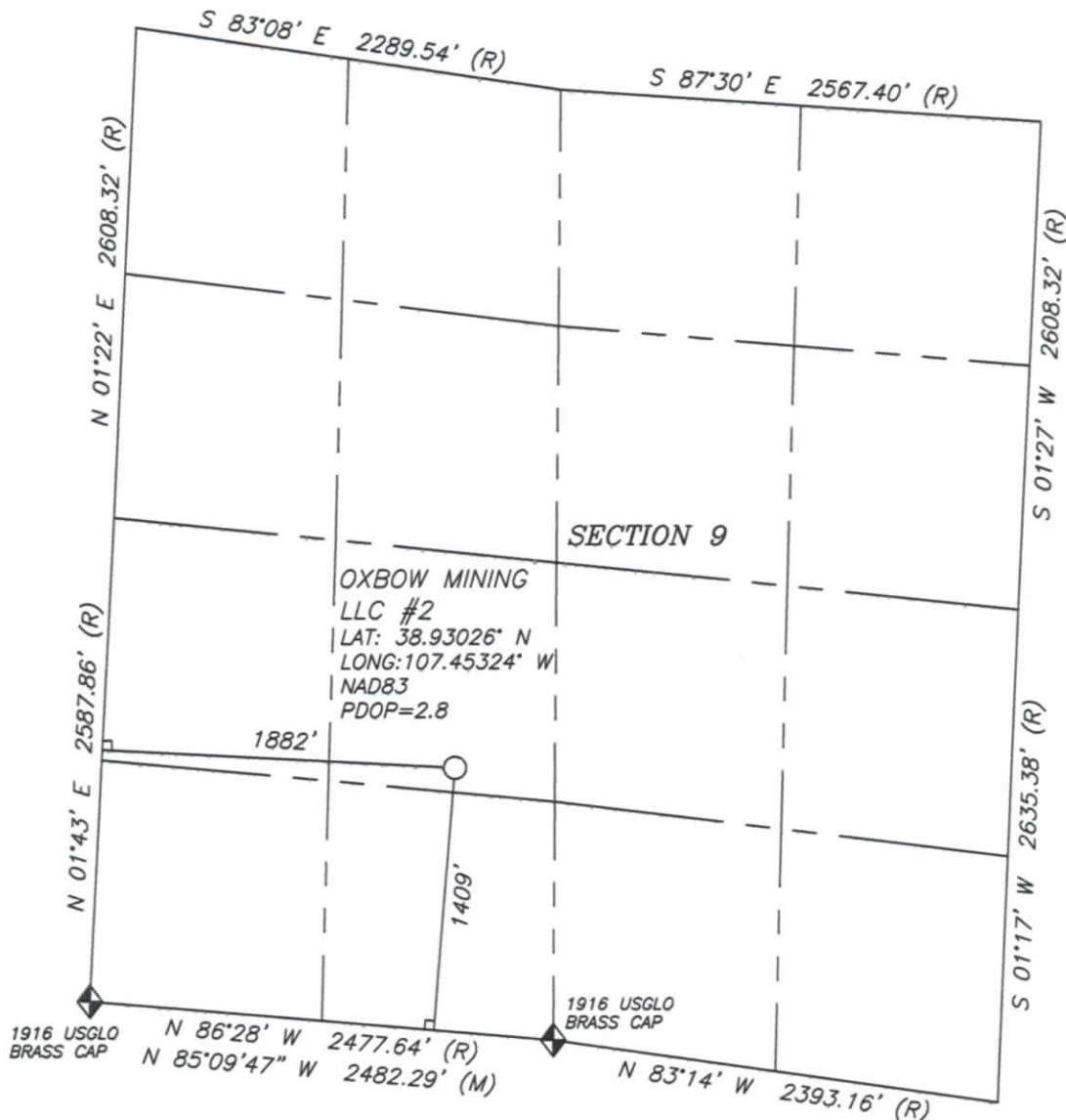


# **VESSELS COAL GAS, INC. OXBOW MINING LLC #2**

1856' FWL, 1391' FSL  
 NE1/4 SW1/4, SEC. 9, T. 13 S., R. 90 W., 6TH P.M.  
 GUNNISON COUNTY, COLORADO  
 GROUND LEVEL ELEVATION: 6093'

**BASIS OF ELEVATION**  
 TOPO ELEVATION INTERPOLATED FROM USGS 7.5 MINUTE  
 "SOMERSET" QUADRANGLE MAP.

**BASIS OF BEARINGS:**  
 N.85°09'47"W. FROM THE 1/4 CORNER COMMON TO  
 SECTIONS 9 & 16 TO THE SECTION CORNER  
 COMMON TO SECTIONS 8, 9, 16 & 17.  
 FIELD MEASURED BEARING.



SCALE 1"=1000'  
 0 250 500 1000

Found U.S.G.L.O. Brass Cap

(R) RECORD DIMENSION AS SHOWN ON  
 G.L.O. SURVEY PLAT APPROVED JANUARY 12, 1916.

(M) MEASURED DIMENSIONS

○ PROPOSED SITE LOCATION

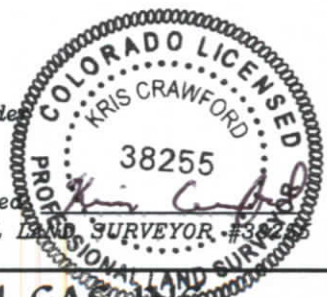
└ 90° SYMBOL

## **SURVEYOR'S CERTIFICATION**

I, Kris Crawford, do hereby certify that the above described parcel has been surveyed by me and under my direct supervision and that such survey is accurately represented hereon.

Date: 19 AUG 2013 Signed

COLORADO PROFESSIONAL LAND SURVEYOR #38255



NOTE: According to Colorado law any legal action based upon a defect in this survey must be commenced within three years after such defect is discovered. In no event may any action based upon any defect in this survey be commenced more than ten years from the date shown on the certification hereon.



**Wilmore and Company**  
 Professional Land Surveying Inc.  
 4053 German Creek Drive Paonia, Colorado 81428  
 Phone: (970) 527-4200 Fax: (970) 527-4202

FIELD CREW:  
 KC  
 DRAFTER:  
 KC  
 CHECKED BY:  
 RAW  
 SURVEYED:  
 JULY 18, 2013

**VESSELS COAL GAS, INC.**  
**OXBOW MINING LLC #2**  
 NE1/4 SW1/4 SEC. 9, T.13S., R.90W., 6TH P.M.  
 GUNNISON COUNTY, COLORADO

J13081 JULY 19, 2013 VICINITY/SECTION MAP