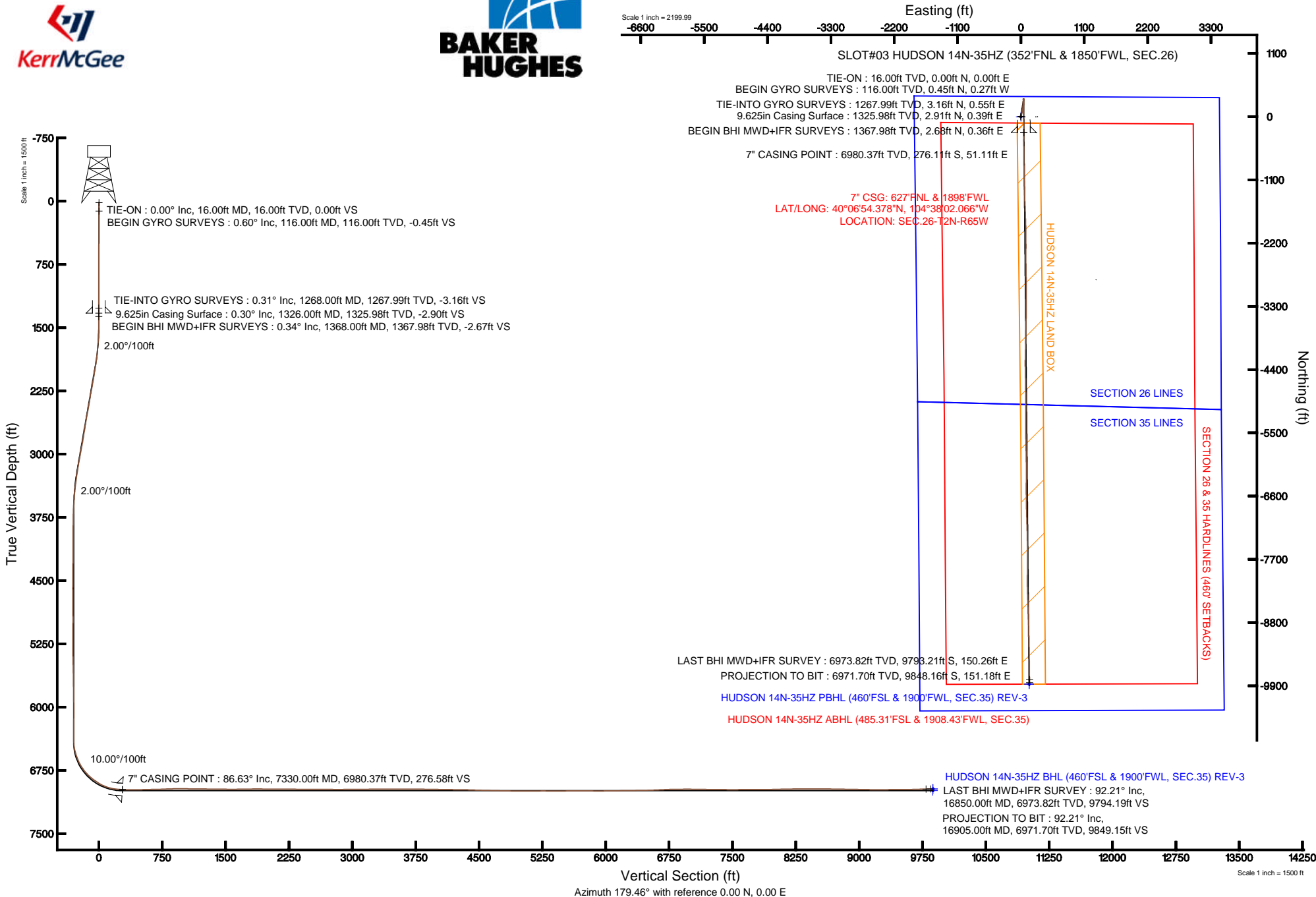


# KERR-MCGEE OIL & GAS ONSHORE LP

Location: COLORADO Slot: SLOT#03 HUDSON 14N-35HZ (352'FNL & 1850'FWL, SEC.26)  
 Field: WELD COUNTY (KERR MCGEE) Well: HUDSON 14N-35HZ  
 Facility: SEC.26-T2N-R65W Wellbore: HUDSON 14N-35HZ PWB

Plot reference wellpath is HUDSON 14N-35HZ (REV-B.0) PWP

True vertical depths are referenced to XTREME 20 (RKB)	Grid System: NAD83 / Lambert Colorado SP, Northern Zone (601), US feet
Measured depths are referenced to XTREME 20 (RKB)	North Reference: True north
XTREME 20 (RKB) to Mean Sea Level: 4926 feet	Scale: True distance
Mean Sea Level to Mud line (At Slot: SLOT#03 HUDSON 14N-35HZ (352'FNL & 1850'FWL, SEC.26)): 0 feet	Depths are in feet
Coordinates are in feet referenced to Slot	Created by: wilsje02 on 5/31/2013





# Actual Wellpath Report

HUDSON 14N-35HZ AWP

Page 1 of 8



## REFERENCE WELLPATH IDENTIFICATION

Operator	<b>KERR-MCGEE OIL &amp; GAS ONSHORE LP</b>	Slot	<b>SLOT#03 HUDSON 14N-35HZ (352'FNL &amp; 1850'FWL, SEC.26)</b>
Area	<b>COLORADO</b>	Well	<b>HUDSON 14N-35HZ</b>
Field	<b>WELD COUNTY (KERR MCGEE)</b>	Wellbore	<b>HUDSON 14N-35HZ AWB</b>
Facility	<b>SEC.26-T2N-R65W</b>		

## REPORT SETUP INFORMATION

Projection System	<b>NAD83 / Lambert Colorado SP, Northern Zone (501), US feet</b>	Software System	<b>WellArchitect@ 3.0.2</b>
North Reference	<b>True</b>	User	<b>Wilsjef02</b>
Scale	<b>0.99996</b>	Report Generated	<b>5/31/2013 at 10:43:22</b>
Convergence at slot	<b>0.56° East</b>	Database/Source file	<b>WellArchitectDB/HUDSON_14N-35HZ_AWB.xml</b>

## WELLPATH LOCATION

	Local coordinates		Grid coordinates		Geographic coordinates	
	North[ft]	East[ft]	Easting[US ft]	Northing[US ft]	Latitude	Longitude
Slot Location	1.52	-290.02	3242171.80	1286235.39	<b>40°06'57.107"N</b>	<b>104°38'02.724"W</b>
Facility Reference Pt			3242461.82	1286236.71	<b>40°06'57.092"N</b>	<b>104°37'58.991"W</b>
Field Reference Pt			<b>3197771.84</b>	<b>1268891.29</b>	40°04'09.600"N	104°47'36.000"W

## WELLPATH DATUM

Calculation method	<b>Minimum curvature</b>	XTREME 20 (RKB) to Facility Vertical Datum	<b>4926.00ft</b>
Horizontal Reference Pt	<b>Slot</b>	XTREME 20 (RKB) to Mean Sea Level	<b>4926.00ft</b>
Vertical Reference Pt	<b>XTREME 20 (RKB)</b>	XTREME 20 (RKB) to Mud Line at Slot (SLOT#03 HUDSON 14N-35HZ (352'FNL & 1850'FWL, SEC.26))	<b>4926.00ft</b>
MD Reference Pt	<b>XTREME 20 (RKB)</b>	Section Origin	<b>N 0.00, E 0.00 ft</b>
Field Vertical Reference	<b>Mean Sea Level</b>	Section Azimuth	<b>179.12°</b>



# Actual Wellpath Report

## HUDSON 14N-35HZ AWP



### REFERENCE WELLPATH IDENTIFICATION

Operator	KERR-MCGEE OIL & GAS ONSHORE LP	Slot	SLOT#03 HUDSON 14N-35HZ (352'FNL & 1850'FWL, SEC.26)
Area	COLORADO	Well	HUDSON 14N-35HZ
Field	WELD COUNTY (KERR MCGEE)	Wellbore	HUDSON 14N-35HZ AWB
Facility	SEC.26-T2N-R65W		

### WELLPATH DATA (208 stations) † = interpolated/extrapolated station

MD [ft]	Inclination [°]	Azimuth [°]	TVD [ft]	Vert Sect [ft]	North [ft]	East [ft]	Latitude	Longitude	DLS [°/100ft]	Comments
0.00†	0.000	328.620	0.00	0.00	0.00	0.00	40°06'57.107"N	104°38'02.724"W	0.00	
16.00	0.000	328.620	16.00	0.00	0.00	0.00	40°06'57.107"N	104°38'02.724"W	0.00	TIE-ON
116.00	0.600	328.620	116.00	-0.45	0.45	-0.27	40°06'57.111"N	104°38'02.728"W	0.60	BEGIN GYRO SURVEYS
216.00	0.350	309.050	215.99	-1.10	1.09	-0.78	40°06'57.118"N	104°38'02.734"W	0.29	
316.00	0.240	344.850	315.99	-1.50	1.48	-1.07	40°06'57.122"N	104°38'02.738"W	0.21	
416.00	0.250	304.770	415.99	-1.83	1.81	-1.31	40°06'57.125"N	104°38'02.741"W	0.17	
516.00	0.270	53.810	515.99	-2.09	2.07	-1.30	40°06'57.127"N	104°38'02.741"W	0.42	
616.00	0.360	16.750	615.99	-2.53	2.51	-1.02	40°06'57.132"N	104°38'02.737"W	0.22	
716.00	0.300	3.750	715.99	-3.09	3.07	-0.91	40°06'57.137"N	104°38'02.736"W	0.10	
816.00	0.100	124.620	815.99	-3.30	3.28	-0.82	40°06'57.139"N	104°38'02.735"W	0.36	
916.00	0.190	83.140	915.99	-3.26	3.26	-0.58	40°06'57.139"N	104°38'02.732"W	0.13	
1016.00	0.260	103.780	1015.99	-3.22	3.22	-0.20	40°06'57.139"N	104°38'02.727"W	0.11	
1116.00	0.280	82.840	1115.99	-3.19	3.20	0.26	40°06'57.139"N	104°38'02.721"W	0.10	
1216.00	0.110	75.630	1215.99	-3.24	3.25	0.60	40°06'57.139"N	104°38'02.716"W	0.17	
1268.00	0.310	224.790	1267.99	-3.16	3.16	0.55	40°06'57.138"N	104°38'02.717"W	0.79	TIE-INTO GYRO SURVEYS
1368.00	0.340	178.770	1367.98	-2.67	2.68	0.36	40°06'57.133"N	104°38'02.719"W	0.26	BEGIN BHI MWD-IFR SURVEYS
1428.00	0.540	10.140	1427.98	-2.77	2.78	0.42	40°06'57.134"N	104°38'02.719"W	1.46	
1514.00	1.670	28.960	1513.97	-4.25	4.27	1.10	40°06'57.149"N	104°38'02.710"W	1.36	
1599.00	2.770	15.340	1598.90	-7.30	7.34	2.24	40°06'57.179"N	104°38'02.695"W	1.43	
1684.00	4.110	10.660	1683.75	-12.26	12.31	3.35	40°06'57.229"N	104°38'02.681"W	1.61	
1769.00	5.210	10.290	1768.46	-19.03	19.10	4.60	40°06'57.296"N	104°38'02.665"W	1.29	
1854.00	7.560	10.310	1852.93	-28.30	28.40	6.29	40°06'57.388"N	104°38'02.643"W	2.76	
1939.00	8.330	16.190	1937.12	-39.67	39.82	9.01	40°06'57.500"N	104°38'02.608"W	1.32	
2024.00	10.060	19.030	2021.02	-52.54	52.75	13.14	40°06'57.628"N	104°38'02.555"W	2.10	
2110.00	9.940	14.930	2105.72	-66.74	67.02	17.51	40°06'57.769"N	104°38'02.499"W	0.84	
2195.00	10.540	12.210	2189.36	-81.37	81.71	21.04	40°06'57.914"N	104°38'02.453"W	0.91	
2280.00	10.900	12.420	2272.88	-96.77	97.15	24.41	40°06'58.067"N	104°38'02.410"W	0.43	
2365.00	9.520	14.480	2356.53	-111.37	111.81	27.90	40°06'58.212"N	104°38'02.365"W	1.68	
2450.00	10.270	8.790	2440.27	-125.62	126.10	30.82	40°06'58.353"N	104°38'02.327"W	1.45	
2535.00	10.460	7.460	2523.88	-140.72	141.24	32.97	40°06'58.503"N	104°38'02.300"W	0.36	
2620.00	9.470	5.980	2607.60	-155.30	155.85	34.71	40°06'58.647"N	104°38'02.277"W	1.20	
2705.00	8.970	0.200	2691.50	-168.87	169.43	35.46	40°06'58.781"N	104°38'02.268"W	1.24	
2790.00	9.090	3.060	2775.45	-182.19	182.76	35.84	40°06'58.913"N	104°38'02.263"W	0.55	
2876.00	10.050	0.200	2860.25	-196.47	197.05	36.23	40°06'59.054"N	104°38'02.258"W	1.25	
2961.00	10.810	0.950	2943.85	-211.85	212.44	36.39	40°06'59.206"N	104°38'02.256"W	0.91	
3046.00	10.040	357.790	3027.44	-227.23	227.81	36.23	40°06'59.358"N	104°38'02.258"W	1.13	
3131.00	9.850	6.190	3111.17	-241.85	242.44	36.73	40°06'59.503"N	104°38'02.251"W	1.72	
3216.00	8.970	5.570	3195.02	-255.65	256.27	38.16	40°06'59.639"N	104°38'02.233"W	1.04	
3302.00	7.850	7.950	3280.10	-268.12	268.76	39.62	40°06'59.763"N	104°38'02.214"W	1.36	
3387.00	7.430	8.630	3364.34	-279.27	279.94	41.25	40°06'59.873"N	104°38'02.193"W	0.51	
3472.00	5.620	8.210	3448.79	-288.80	289.49	42.67	40°06'59.968"N	104°38'02.175"W	2.13	
3557.00	4.010	4.130	3533.49	-295.87	296.58	43.48	40°07'00.038"N	104°38'02.164"W	1.94	
3642.00	2.590	353.830	3618.35	-300.75	301.45	43.48	40°07'00.086"N	104°38'02.164"W	1.80	
3727.00	1.690	357.280	3703.29	-303.91	304.61	43.22	40°07'00.117"N	104°38'02.168"W	1.07	
3813.00	0.740	350.910	3789.26	-305.73	306.43	43.07	40°07'00.135"N	104°38'02.170"W	1.11	



# Actual Wellpath Report

## HUDSON 14N-35HZ AWP



### REFERENCE WELLPATH IDENTIFICATION

Operator	KERR-MCGEE OIL & GAS ONSHORE LP	Slot	SLOT#03 HUDSON 14N-35HZ (352'FNL & 1850'FWL, SEC.26)
Area	COLORADO	Well	HUDSON 14N-35HZ
Field	WELD COUNTY (KERR MCGEE)	Wellbore	HUDSON 14N-35HZ AWB
Facility	SEC.26-T2N-R65W		

### WELLPATH DATA (208 stations)

MD [ft]	Inclination [°]	Azimuth [°]	TVD [ft]	Vert Sect [ft]	North [ft]	East [ft]	Latitude	Longitude	DLS [°/100ft]	Comments
3898.00	0.800	40.320	3874.26	-306.72	307.42	43.37	40°07'00.145"N	104°38'02.166"W	0.76	
3983.00	1.070	28.480	3959.25	-307.86	308.57	44.13	40°07'00.156"N	104°38'02.156"W	0.39	
4068.00	0.090	248.160	4044.24	-308.53	309.24	44.45	40°07'00.163"N	104°38'02.152"W	1.34	
4153.00	0.130	250.000	4129.24	-308.47	309.19	44.29	40°07'00.162"N	104°38'02.154"W	0.05	
4238.00	0.320	46.090	4214.24	-308.60	309.32	44.37	40°07'00.164"N	104°38'02.153"W	0.52	
4324.00	0.280	337.830	4300.24	-308.96	309.68	44.47	40°07'00.167"N	104°38'02.152"W	0.39	
4409.00	0.480	12.190	4385.24	-309.50	310.22	44.46	40°07'00.173"N	104°38'02.152"W	0.35	
4494.00	0.960	30.420	4470.23	-310.46	311.18	44.90	40°07'00.182"N	104°38'02.146"W	0.62	
4579.00	0.440	320.310	4555.23	-311.32	312.05	45.05	40°07'00.191"N	104°38'02.144"W	1.07	
4664.00	0.430	148.630	4640.23	-311.30	312.03	45.01	40°07'00.190"N	104°38'02.145"W	1.02	
4750.00	0.460	166.090	4726.22	-310.68	311.41	45.26	40°07'00.184"N	104°38'02.141"W	0.16	
4835.00	0.770	146.430	4811.22	-309.87	310.61	45.66	40°07'00.176"N	104°38'02.136"W	0.44	
4920.00	0.740	123.110	4896.21	-309.08	309.83	46.43	40°07'00.169"N	104°38'02.126"W	0.36	
5005.00	0.800	80.980	4981.20	-308.86	309.62	47.48	40°07'00.167"N	104°38'02.113"W	0.65	
5091.00	1.080	33.040	5067.19	-309.62	310.40	48.51	40°07'00.174"N	104°38'02.100"W	0.94	
5176.00	0.940	65.060	5152.18	-310.57	311.36	49.58	40°07'00.184"N	104°38'02.086"W	0.67	
5261.00	1.220	74.800	5237.17	-311.07	311.90	51.09	40°07'00.189"N	104°38'02.066"W	0.39	
5346.00	0.920	155.720	5322.16	-310.67	311.51	52.24	40°07'00.185"N	104°38'02.052"W	1.66	
5432.00	1.610	191.530	5408.13	-308.86	309.70	52.28	40°07'00.167"N	104°38'02.051"W	1.18	
5517.00	1.640	190.080	5493.10	-306.50	307.33	51.83	40°07'00.144"N	104°38'02.057"W	0.06	
5602.00	1.170	182.070	5578.08	-304.44	305.26	51.59	40°07'00.124"N	104°38'02.060"W	0.60	
5687.00	1.060	205.210	5663.06	-302.86	303.69	51.22	40°07'00.108"N	104°38'02.065"W	0.54	
5773.00	0.960	216.960	5749.05	-301.58	302.39	50.45	40°07'00.095"N	104°38'02.075"W	0.27	
5858.00	1.300	220.640	5834.03	-300.30	301.09	49.39	40°07'00.082"N	104°38'02.088"W	0.41	
5943.00	0.920	228.100	5919.01	-299.13	299.90	48.26	40°07'00.071"N	104°38'02.103"W	0.48	
6028.00	0.420	126.580	6004.01	-298.49	299.26	48.00	40°07'00.064"N	104°38'02.106"W	1.28	
6113.00	0.700	53.230	6089.01	-298.60	299.39	48.67	40°07'00.066"N	104°38'02.098"W	0.83	
6199.00	0.680	52.200	6175.00	-299.22	300.01	49.49	40°07'00.072"N	104°38'02.087"W	0.03	
6284.00	0.970	46.900	6259.99	-300.01	300.81	50.42	40°07'00.080"N	104°38'02.075"W	0.35	
6360.00	1.050	47.520	6335.98	-300.90	301.72	51.40	40°07'00.089"N	104°38'02.062"W	0.11	
6454.00	3.270	172.840	6429.93	-298.81	299.65	52.37	40°07'00.068"N	104°38'02.050"W	4.22	
6497.00	8.210	177.920	6472.70	-294.51	295.36	52.63	40°07'00.026"N	104°38'02.047"W	11.54	
6539.00	12.550	179.390	6514.01	-286.95	287.79	52.79	40°06'59.951"N	104°38'02.045"W	10.35	
6582.00	16.500	180.860	6555.62	-276.17	277.01	52.75	40°06'59.844"N	104°38'02.045"W	9.23	
6624.00	20.340	180.010	6595.46	-262.91	263.74	52.66	40°06'59.713"N	104°38'02.046"W	9.16	
6667.00	23.950	181.650	6635.29	-246.71	247.54	52.40	40°06'59.553"N	104°38'02.049"W	8.52	
6709.00	27.750	181.560	6673.08	-228.42	229.24	51.89	40°06'59.372"N	104°38'02.056"W	9.05	
6752.00	32.100	182.480	6710.34	-207.00	207.81	51.13	40°06'59.161"N	104°38'02.066"W	10.17	
6794.00	36.190	181.530	6745.09	-183.46	184.25	50.31	40°06'58.928"N	104°38'02.076"W	9.82	
6837.00	41.350	181.520	6778.60	-156.57	157.35	49.59	40°06'58.662"N	104°38'02.086"W	12.00	
6879.00	45.580	180.880	6809.08	-127.70	128.47	49.00	40°06'58.377"N	104°38'02.093"W	10.13	
6922.00	50.390	179.480	6837.85	-95.77	96.53	48.91	40°06'58.061"N	104°38'02.094"W	11.44	
6965.00	53.810	179.310	6864.26	-61.84	62.61	49.27	40°06'57.726"N	104°38'02.090"W	7.96	
7008.00	56.480	180.750	6888.84	-26.57	27.33	49.24	40°06'57.377"N	104°38'02.090"W	6.79	
7050.00	58.690	179.330	6911.35	8.88	-8.13	49.23	40°06'57.027"N	104°38'02.090"W	5.99	



# Actual Wellpath Report

HUDSON 14N-35HZ AWP

Page 4 of 8



## REFERENCE WELLPATH IDENTIFICATION

Operator	KERR-MCGEE OIL & GAS ONSHORE LP	Slot	SLOT#03 HUDSON 14N-35HZ (352'FNL & 1850'FWL, SEC.26)
Area	COLORADO	Well	HUDSON 14N-35HZ
Field	WELD COUNTY (KERR MCGEE)	Wellbore	HUDSON 14N-35HZ AWB
Facility	SEC.26-T2N-R65W		

## WELLPATH DATA (208 stations) † = interpolated/extrapolated station

MD [ft]	Inclination [°]	Azimuth [°]	TVD [ft]	Vert Sect [ft]	North [ft]	East [ft]	Latitude	Longitude	DLS [°/100ft]	Comments
7093.00	64.440	178.660	6931.82	46.68	-45.92	49.89	40°06'56.653"N	104°38'02.082"W	13.44	
7135.00	70.000	177.750	6948.07	85.38	-84.61	51.11	40°06'56.271"N	104°38'02.066"W	13.39	
7178.00	75.730	178.410	6960.74	126.45	-125.66	52.49	40°06'55.865"N	104°38'02.048"W	13.41	
7220.00	80.210	180.230	6969.49	167.51	-166.72	52.97	40°06'55.459"N	104°38'02.042"W	11.48	
7263.00	84.700	181.000	6975.13	210.12	-209.33	52.51	40°06'55.038"N	104°38'02.048"W	10.59	
7285.00	85.030	181.530	6977.10	232.01	-231.24	52.02	40°06'54.822"N	104°38'02.054"W	2.83	
7330.00†	86.630	180.801	6980.37	276.86	-276.11	51.11	40°06'54.378"N	104°38'02.066"W	3.90	7" CASING POINT
7384.00	88.550	179.930	6982.65	330.80	-330.06	50.77	40°06'53.845"N	104°38'02.071"W	3.90	
7469.00	90.340	180.120	6983.47	415.78	-415.05	50.73	40°06'53.005"N	104°38'02.071"W	2.12	
7555.00	91.790	179.880	6981.87	501.75	-501.03	50.73	40°06'52.156"N	104°38'02.071"W	1.71	
7640.00	91.630	179.620	6979.33	586.71	-585.99	51.10	40°06'51.316"N	104°38'02.066"W	0.36	
7725.00	90.890	179.320	6977.46	671.69	-670.97	51.89	40°06'50.476"N	104°38'02.056"W	0.94	
7810.00	92.250	179.120	6975.14	756.65	-755.93	53.04	40°06'49.637"N	104°38'02.041"W	1.62	
7895.00	91.750	179.050	6972.17	841.60	-840.87	54.40	40°06'48.797"N	104°38'02.024"W	0.59	
7980.00	90.210	179.430	6970.72	926.59	-925.84	55.53	40°06'47.958"N	104°38'02.009"W	1.87	
8065.00	89.510	179.110	6970.92	1011.58	-1010.83	56.61	40°06'47.118"N	104°38'01.995"W	0.91	
8150.00	89.420	179.160	6971.72	1096.58	-1095.82	57.89	40°06'46.278"N	104°38'01.979"W	0.12	
8235.00	89.290	178.760	6972.67	1181.57	-1180.80	59.44	40°06'45.438"N	104°38'01.959"W	0.49	
8321.00	89.290	177.920	6973.74	1267.56	-1266.76	61.93	40°06'44.589"N	104°38'01.927"W	0.98	
8406.00	89.290	177.960	6974.79	1352.53	-1351.70	64.98	40°06'43.749"N	104°38'01.888"W	0.05	
8491.00	89.660	178.020	6975.57	1437.51	-1436.64	67.96	40°06'42.910"N	104°38'01.849"W	0.44	
8577.00	89.290	177.230	6976.36	1523.48	-1522.56	71.53	40°06'42.061"N	104°38'01.803"W	1.01	
8662.00	90.500	178.000	6976.52	1608.45	-1607.49	75.06	40°06'41.222"N	104°38'01.758"W	1.69	
8747.00	90.740	178.560	6975.60	1693.43	-1692.44	77.62	40°06'40.382"N	104°38'01.725"W	0.72	
8832.00	91.140	178.050	6974.20	1778.41	-1777.39	80.13	40°06'39.543"N	104°38'01.693"W	0.76	
8917.00	89.790	178.340	6973.51	1863.40	-1862.35	82.81	40°06'38.703"N	104°38'01.658"W	1.62	
9002.00	89.780	178.940	6973.83	1948.39	-1947.32	84.82	40°06'37.863"N	104°38'01.632"W	0.71	
9087.00	90.090	178.940	6973.93	2033.39	-2032.31	86.40	40°06'37.023"N	104°38'01.612"W	0.36	
9172.00	89.700	180.150	6974.08	2118.39	-2117.30	87.07	40°06'36.184"N	104°38'01.603"W	1.50	
9258.00	89.750	179.510	6974.50	2204.38	-2203.30	87.33	40°06'35.334"N	104°38'01.600"W	0.75	
9343.00	88.800	180.310	6975.57	2289.36	-2288.29	87.46	40°06'34.494"N	104°38'01.598"W	1.46	
9428.00	89.720	180.350	6976.67	2374.34	-2373.28	86.97	40°06'33.654"N	104°38'01.605"W	1.08	
9513.00	89.660	179.760	6977.13	2459.33	-2458.28	86.89	40°06'32.814"N	104°38'01.606"W	0.70	
9599.00	89.910	179.620	6977.45	2545.32	-2544.28	87.35	40°06'31.964"N	104°38'01.600"W	0.33	
9691.00	89.410	179.380	6978.00	2637.32	-2636.27	88.16	40°06'31.055"N	104°38'01.589"W	0.60	
9782.00	89.780	178.920	6978.64	2728.31	-2727.26	89.51	40°06'30.156"N	104°38'01.572"W	0.65	
9874.00	89.780	178.160	6978.99	2820.31	-2819.23	91.85	40°06'29.247"N	104°38'01.542"W	0.83	
9966.00	90.640	179.660	6978.66	2912.30	-2911.21	93.60	40°06'28.338"N	104°38'01.519"W	1.88	
10057.00	90.090	180.400	6978.08	3003.29	-3002.21	93.55	40°06'27.439"N	104°38'01.520"W	1.01	
10149.00	90.610	180.230	6977.51	3095.27	-3094.20	93.05	40°06'26.530"N	104°38'01.526"W	0.59	
10245.00	90.740	179.810	6976.38	3191.25	-3190.20	93.01	40°06'25.581"N	104°38'01.527"W	0.46	
10337.00	90.060	180.230	6975.74	3283.23	-3282.19	92.98	40°06'24.672"N	104°38'01.527"W	0.87	
10429.00	90.310	179.960	6975.44	3375.22	-3374.19	92.83	40°06'23.763"N	104°38'01.529"W	0.40	
10519.00	89.660	181.220	6975.47	3465.19	-3464.18	91.90	40°06'22.873"N	104°38'01.541"W	1.58	
10611.00	89.960	181.200	6975.77	3557.13	-3556.16	89.96	40°06'21.965"N	104°38'01.566"W	0.33	



# Actual Wellpath Report

## HUDSON 14N-35HZ AWP



### REFERENCE WELLPATH IDENTIFICATION

Operator	KERR-MCGEE OIL & GAS ONSHORE LP	Slot	SLOT#03 HUDSON 14N-35HZ (352'FNL & 1850'FWL, SEC.26)
Area	COLORADO	Well	HUDSON 14N-35HZ
Field	WELD COUNTY (KERR MCGEE)	Wellbore	HUDSON 14N-35HZ AWB
Facility	SEC.26-T2N-R65W		

### WELLPATH DATA (208 stations)

MD [ft]	Inclination [°]	Azimuth [°]	TVD [ft]	Vert Sect [ft]	North [ft]	East [ft]	Latitude	Longitude	DLS [°/100ft]	Comments
10702.00	90.700	180.720	6975.25	3648.08	-3647.15	88.44	40°06'21.065"N	104°38'01.586"W	0.97	
10794.00	89.750	181.080	6974.89	3740.03	-3739.14	86.99	40°06'20.156"N	104°38'01.604"W	1.10	
10886.00	88.890	181.450	6975.98	3831.96	-3831.11	84.96	40°06'19.248"N	104°38'01.631"W	1.02	
10978.00	89.160	181.230	6977.54	3923.88	-3923.07	82.81	40°06'18.339"N	104°38'01.658"W	0.38	
11068.00	89.290	181.190	6978.76	4013.81	-4013.04	80.91	40°06'17.450"N	104°38'01.683"W	0.15	
11160.00	89.160	181.360	6980.01	4105.73	-4105.01	78.86	40°06'16.541"N	104°38'01.709"W	0.23	
11251.00	89.160	181.120	6981.34	4196.66	-4195.98	76.89	40°06'15.642"N	104°38'01.734"W	0.26	
11343.00	89.600	179.980	6982.34	4288.63	-4287.96	76.01	40°06'14.733"N	104°38'01.746"W	1.33	
11435.00	88.140	179.060	6984.15	4380.60	-4379.94	76.78	40°06'13.824"N	104°38'01.736"W	1.88	
11526.00	88.370	179.020	6986.92	4471.56	-4470.89	78.30	40°06'12.925"N	104°38'01.716"W	0.26	
11618.00	88.180	178.410	6989.69	4563.52	-4562.82	80.37	40°06'12.017"N	104°38'01.690"W	0.69	
11710.00	88.890	179.230	6992.04	4655.48	-4654.77	82.26	40°06'11.108"N	104°38'01.665"W	1.18	
11801.00	88.790	179.540	6993.89	4746.46	-4745.74	83.24	40°06'10.209"N	104°38'01.653"W	0.36	
11893.00	88.770	179.250	6995.84	4838.44	-4837.72	84.21	40°06'09.300"N	104°38'01.640"W	0.32	
11985.00	89.720	179.560	6997.06	4930.43	-4929.70	85.16	40°06'08.391"N	104°38'01.628"W	1.09	
12076.00	89.600	180.100	6997.60	5021.42	-5020.70	85.43	40°06'07.492"N	104°38'01.625"W	0.61	
12168.00	90.710	180.430	6997.35	5113.40	-5112.70	85.01	40°06'06.583"N	104°38'01.630"W	1.26	
12259.00	90.430	180.120	6996.44	5204.38	-5203.69	84.57	40°06'05.683"N	104°38'01.636"W	0.46	
12351.00	89.720	180.060	6996.32	5296.36	-5295.69	84.43	40°06'04.774"N	104°38'01.638"W	0.77	
12436.00	89.380	179.720	6996.99	5381.35	-5380.69	84.59	40°06'03.934"N	104°38'01.635"W	0.57	
12521.00	90.650	179.570	6996.97	5466.35	-5465.69	85.12	40°06'03.094"N	104°38'01.629"W	1.50	
12606.00	90.460	178.920	6996.14	5551.34	-5550.67	86.24	40°06'02.254"N	104°38'01.614"W	0.80	
12691.00	90.180	178.920	6995.67	5636.34	-5635.66	87.84	40°06'01.415"N	104°38'01.594"W	0.33	
12776.00	89.810	179.000	6995.68	5721.34	-5720.64	89.38	40°06'00.575"N	104°38'01.574"W	0.45	
12861.00	89.720	178.810	6996.03	5806.34	-5805.63	91.00	40°05'59.735"N	104°38'01.553"W	0.25	
12947.00	89.660	178.430	6996.49	5892.34	-5891.60	93.08	40°05'58.885"N	104°38'01.526"W	0.45	
13032.00	90.580	179.630	6996.31	5977.33	-5976.59	94.52	40°05'58.046"N	104°38'01.508"W	1.78	
13117.00	90.680	179.850	6995.38	6062.32	-6061.58	94.90	40°05'57.206"N	104°38'01.503"W	0.28	
13202.00	90.920	179.940	6994.19	6147.31	-6146.57	95.06	40°05'56.366"N	104°38'01.501"W	0.30	
13287.00	90.860	180.170	6992.87	6232.29	-6231.56	94.97	40°05'55.526"N	104°38'01.502"W	0.28	
13372.00	90.700	180.040	6991.71	6317.26	-6316.55	94.82	40°05'54.686"N	104°38'01.504"W	0.24	
13457.00	90.490	180.300	6990.83	6402.25	-6401.55	94.57	40°05'53.846"N	104°38'01.507"W	0.39	
13543.00	91.940	179.960	6989.01	6488.21	-6487.53	94.37	40°05'52.996"N	104°38'01.510"W	1.73	
13628.00	92.100	179.560	6986.01	6573.15	-6572.47	94.73	40°05'52.157"N	104°38'01.505"W	0.51	
13713.00	92.440	180.290	6982.64	6658.08	-6657.41	94.84	40°05'51.318"N	104°38'01.504"W	0.95	
13799.00	92.160	178.260	6979.19	6744.00	-6743.32	95.93	40°05'50.469"N	104°38'01.490"W	2.38	
13884.00	90.430	178.730	6977.27	6828.97	-6828.27	98.16	40°05'49.629"N	104°38'01.461"W	2.11	
13969.00	90.830	178.480	6976.34	6913.96	-6913.24	100.23	40°05'48.789"N	104°38'01.434"W	0.55	
14054.00	89.420	178.070	6976.15	6998.95	-6998.20	102.79	40°05'47.950"N	104°38'01.401"W	1.73	
14139.00	89.140	178.150	6977.22	7083.93	-7083.15	105.59	40°05'47.110"N	104°38'01.365"W	0.34	
14224.00	89.260	178.420	6978.41	7168.91	-7168.10	108.13	40°05'46.271"N	104°38'01.333"W	0.35	
14310.00	88.920	178.550	6979.77	7254.90	-7254.06	110.41	40°05'45.421"N	104°38'01.303"W	0.42	
14395.00	89.850	178.990	6980.69	7339.89	-7339.03	112.23	40°05'44.582"N	104°38'01.280"W	1.21	
14479.00	89.420	178.940	6981.22	7423.89	-7423.02	113.75	40°05'43.752"N	104°38'01.260"W	0.52	
14565.00	90.220	179.560	6981.49	7509.89	-7509.01	114.87	40°05'42.902"N	104°38'01.246"W	1.18	



# Actual Wellpath Report

HUDSON 14N-35HZ AWP

Page 6 of 8



## REFERENCE WELLPATH IDENTIFICATION

Operator	KERR-MCGEE OIL & GAS ONSHORE LP	Slot	SLOT#03 HUDSON 14N-35HZ (352'FNL & 1850'FWL, SEC.26)
Area	COLORADO	Well	HUDSON 14N-35HZ
Field	WELD COUNTY (KERR MCGEE)	Wellbore	HUDSON 14N-35HZ AWB
Facility	SEC.26-T2N-R65W		

## WELLPATH DATA (208 stations)

MD [ft]	Inclination [°]	Azimuth [°]	TVD [ft]	Vert Sect [ft]	North [ft]	East [ft]	Latitude	Longitude	DLS [°/100ft]	Comments
14650.00	90.120	179.870	6981.24	7594.88	-7594.01	115.30	40°05'42.062"N	104°38'01.240"W	0.38	
14735.00	90.090	180.220	6981.08	7679.87	-7679.01	115.23	40°05'41.222"N	104°38'01.241"W	0.41	
14820.00	90.090	180.480	6980.95	7764.85	-7764.00	114.71	40°05'40.382"N	104°38'01.248"W	0.31	
14906.00	89.810	180.490	6981.02	7850.83	-7850.00	113.98	40°05'39.532"N	104°38'01.257"W	0.33	
14991.00	91.540	180.370	6980.02	7935.79	-7934.99	113.34	40°05'38.692"N	104°38'01.266"W	2.04	
15076.00	91.660	181.020	6977.65	8020.73	-8019.95	112.31	40°05'37.853"N	104°38'01.279"W	0.78	
15161.00	91.540	179.760	6975.28	8105.67	-8104.91	111.74	40°05'37.013"N	104°38'01.286"W	1.49	
15247.00	90.330	178.220	6973.87	8191.66	-8190.88	113.25	40°05'36.164"N	104°38'01.267"W	2.28	
15332.00	90.800	178.210	6973.03	8276.64	-8275.84	115.90	40°05'35.324"N	104°38'01.233"W	0.55	
15417.00	89.720	178.090	6972.65	8361.63	-8360.79	118.64	40°05'34.484"N	104°38'01.197"W	1.28	
15502.00	89.900	178.270	6972.93	8446.62	-8445.75	121.34	40°05'33.645"N	104°38'01.163"W	0.30	
15588.00	90.340	178.130	6972.75	8532.60	-8531.71	124.04	40°05'32.796"N	104°38'01.128"W	0.54	
15673.00	89.220	178.290	6973.08	8617.59	-8616.66	126.70	40°05'31.956"N	104°38'01.094"W	1.33	
15758.00	89.170	178.100	6974.27	8702.57	-8701.61	129.38	40°05'31.116"N	104°38'01.059"W	0.23	
15843.00	88.920	177.830	6975.69	8787.54	-8786.55	132.39	40°05'30.277"N	104°38'01.021"W	0.43	
15928.00	89.320	177.910	6976.99	8872.51	-8871.48	135.55	40°05'29.438"N	104°38'00.980"W	0.48	
16014.00	89.050	179.580	6978.22	8958.50	-8957.44	137.44	40°05'28.588"N	104°38'00.956"W	1.97	
16099.00	88.740	178.690	6979.86	9043.48	-9042.42	138.72	40°05'27.749"N	104°38'00.939"W	1.11	
16184.00	89.170	179.120	6981.41	9128.47	-9127.39	140.34	40°05'26.909"N	104°38'00.918"W	0.72	
16269.00	89.880	178.810	6982.11	9213.46	-9212.37	141.88	40°05'26.069"N	104°38'00.899"W	0.91	
16354.00	90.460	179.220	6981.86	9298.46	-9297.36	143.34	40°05'25.229"N	104°38'00.880"W	0.84	
16440.00	91.110	179.160	6980.68	9384.45	-9383.34	144.55	40°05'24.380"N	104°38'00.864"W	0.76	
16525.00	89.880	178.840	6979.95	9469.45	-9468.32	146.04	40°05'23.540"N	104°38'00.845"W	1.50	
16609.00	90.360	179.430	6979.77	9553.45	-9552.31	147.31	40°05'22.710"N	104°38'00.829"W	0.91	
16694.00	91.360	179.320	6978.49	9638.44	-9637.30	148.23	40°05'21.870"N	104°38'00.817"W	1.18	
16779.00	91.690	179.310	6976.23	9723.40	-9722.26	149.25	40°05'21.030"N	104°38'00.804"W	0.39	
16850.00	92.210	179.050	6973.82	9794.36	-9793.21	150.26	40°05'20.329"N	104°38'00.791"W	0.82	LAST BHI MWD+IFR SURVEY
16905.00	92.210	179.050	6971.70	9849.32	-9848.16	151.18	40°05'19.786"N	104°38'00.779"W	0.00	PROJECTION TO BIT

## HOLE & CASING SECTIONS - Ref Wellbore: HUDSON 14N-35HZ AWB Ref Wellpath: HUDSON 14N-35HZ AWP

String/Diameter	Start MD [ft]	End MD [ft]	Interval [ft]	Start TVD [ft]	End TVD [ft]	Start N/S [ft]	Start E/W [ft]	End N/S [ft]	End E/W [ft]
13.5in Open Hole	16.00	1326.00	1310.00	16.00	1325.98	0.00	0.00	2.91	0.39
9.625in Casing Surface	16.00	1326.00	1310.00	16.00	1325.98	0.00	0.00	2.91	0.39
8.75in Open Hole	1326.00	7340.00	6014.00	1325.98	6980.93	2.91	0.39	-286.09	50.99
7in Casing Intermediate	16.00	7330.00	7314.00	16.00	6980.37	0.00	0.00	-276.11	51.11
6.125in Open Hole	7330.00	16905.00	9575.00	6980.37	6971.70	-276.11	51.11	-9848.16	151.18



# Actual Wellpath Report

HUDSON 14N-35HZ AWP

Page 7 of 8



## REFERENCE WELLPATH IDENTIFICATION

Operator	KERR-MCGEE OIL & GAS ONSHORE LP	Slot	SLOT#03 HUDSON 14N-35HZ (352'FNL & 1850'FWL, SEC.26)
Area	COLORADO	Well	HUDSON 14N-35HZ
Field	WELD COUNTY (KERR MCGEE)	Wellbore	HUDSON 14N-35HZ AWB
Facility	SEC.26-T2N-R65W		

## TARGETS

Name	MD [ft]	TVD [ft]	North [ft]	East [ft]	Grid East [US ft]	Grid North [US ft]	Latitude	Longitude	Shape
SECTION 26 LINES		0.00	-1.52	290.02	3242461.82	1286236.71	40°06'57.092"N	104°37'58.991"W	polygon
SECTION 35 LINES		0.00	-1.52	290.02	3242461.82	1286236.71	40°06'57.092"N	104°37'58.991"W	polygon
HUDSON 14N-35HZ BHL (460'FSL & 1900'FWL, SEC.35) REV-2		6973.00	-9873.47	142.75	3242410.95	1276364.21	40°05'19.536"N	104°38'00.887"W	point
HUDSON 14N-35HZ BHL ON PLAT (460' FSL & 1980' FWL, SEC.35) REV-1		6973.00	-9873.47	222.75	3242490.95	1276364.99	40°05'19.536"N	104°37'59.858"W	point
HUDSON 14N-35HZ LAND BOX		6973.00	0.00	0.00	3242171.80	1286235.39	40°06'57.107"N	104°38'02.724"W	polygon
HUDSON 14N-35HZ BHL (460'FSL & 1900'FWL, SEC.35) REV-3		6993.00	-9873.47	142.75	3242410.95	1276364.21	40°05'19.536"N	104°38'00.887"W	point
SECTION 26 & 35 HARDLINES (460' SETBACKS)		7000.00	-1.52	290.02	3242461.82	1286236.71	40°06'57.092"N	104°37'58.991"W	polygon

## WELLPATH COMPOSITION - Ref Wellbore: HUDSON 14N-35HZ AWB Ref Wellpath: HUDSON 14N-35HZ AWP

Start MD [ft]	End MD [ft]	Positional Uncertainty Model	Log Name/Comment	Wellbore
16.00	1268.00	Generic gyro - continuous (Standard)	MS ENERGY GYRO SURVEYS <116-1268>	HUDSON 14N-35HZ AWB
1268.00	7285.00	NaviTrak (MAGCORR,IFR)	BHI MWD+IFR SURVEYS 8 3/4" HOLE <1368-7285>	HUDSON 14N-35HZ AWB
7285.00	16850.00	NaviTrak (MAGCORR,IFR)	BHI MWD+IFR SURVEYS 6 1/8" HOLE <7384-16850>	HUDSON 14N-35HZ AWB
16850.00	16905.00	Blind Drilling (std)	Projection to bit	HUDSON 14N-35HZ AWB



# Actual Wellpath Report

HUDSON 14N-35HZ AWP

Page 8 of 8



## REFERENCE WELLPATH IDENTIFICATION

Operator	KERR-MCGEE OIL & GAS ONSHORE LP	Slot	SLOT#03 HUDSON 14N-35HZ (352'FNL & 1850'FWL, SEC.26)
Area	COLORADO	Well	HUDSON 14N-35HZ
Field	WELD COUNTY (KERR MCGEE)	Wellbore	HUDSON 14N-35HZ AWB
Facility	SEC.26-T2N-R65W		

## WELLPATH COMMENTS

MD [ft]	Inclination [°]	Azimuth [°]	TVD [ft]	Comment
16.00	0.000	328.620	16.00	TIE-ON
116.00	0.600	328.620	116.00	BEGIN GYRO SURVEYS
1268.00	0.310	224.790	1267.99	TIE-INTO GYRO SURVEYS
1368.00	0.340	178.770	1367.98	BEGIN BHI MWD+IFR SURVEYS
7330.00	86.630	180.801	6980.37	7" CASING POINT
16850.00	92.210	179.050	6973.82	LAST BHI MWD+IFR SURVEY
16905.00	92.210	179.050	6971.70	PROJECTION TO BIT