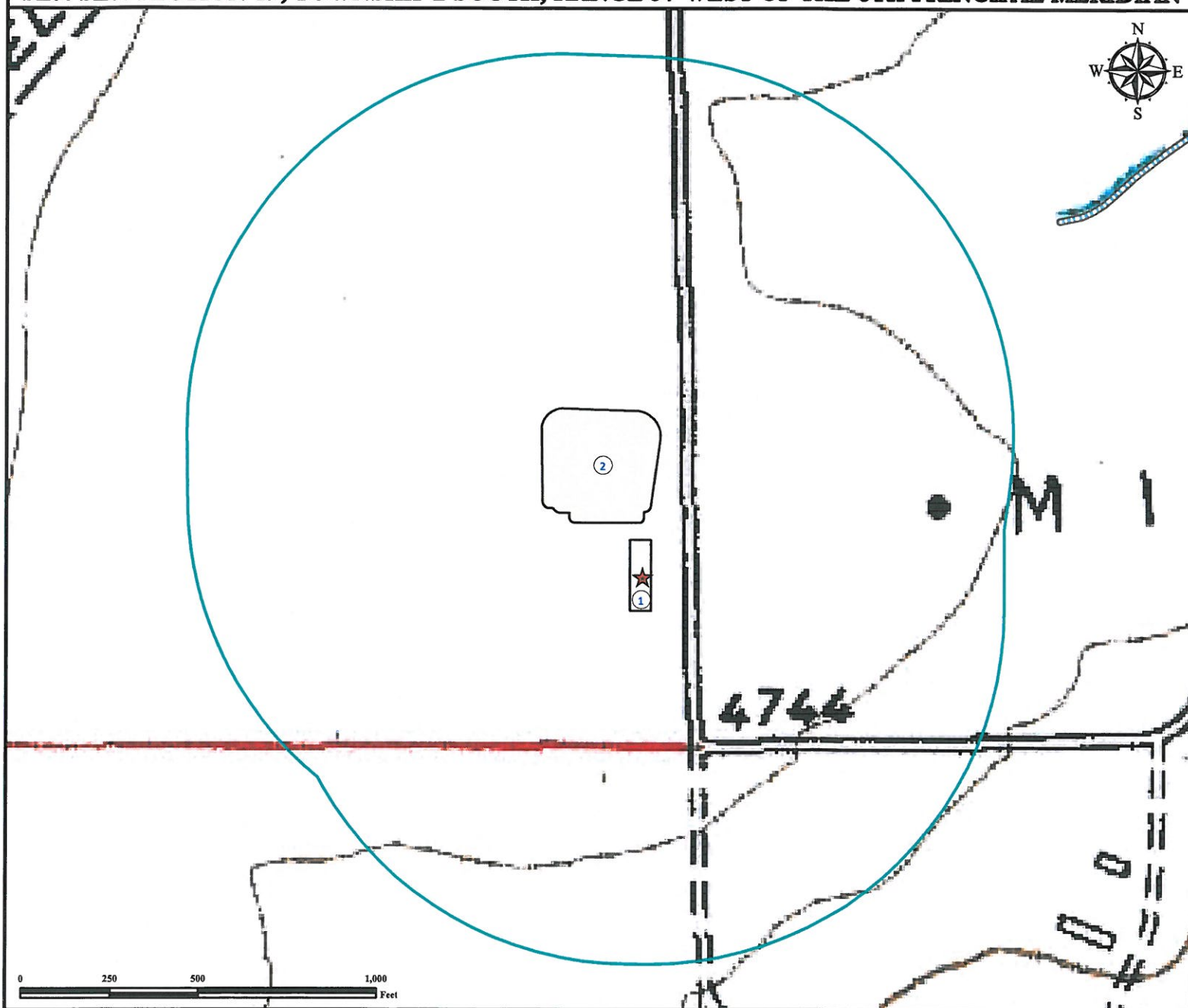


Hydrology Map

MIDDLEMIST 19-M FACILITY

SE¼ SE¼ SECTION 19, TOWNSHIP 2 SOUTH, RANGE 57 WEST OF THE 6TH PRINCIPAL MERIDIAN



1. Proposed MIDDLEMIST 19-M Facility.

2. Proposed MIDDLEMIST 19-M Evaporation Pond.

There are No Surface Waters Within 1000' Radius of the Proposed Oil and Gas Facility and Evaporation Pond.

Legend

Proposed Facility 1000' Radius Intermittent Stream

Reference Location

** All measurements are made from
★ Reference Point **

Lat: 39.856863° Long:-103.798523° (NAD83)
Elevation: 4753 Feet



Use our resources to find yours!

www.petro-fs.com

(303) 928-7128

Field Date: 04/16/2013
Drafting Date: 06/04/2013
Drafter: CPO
Revision: 2

Data Sources:

- TOPO courtesy USGS
- Intermittent Streams courtesy of NHD

Prepared for:



BAYSWATER
EXPLORATION AND PRODUCTION, LLC