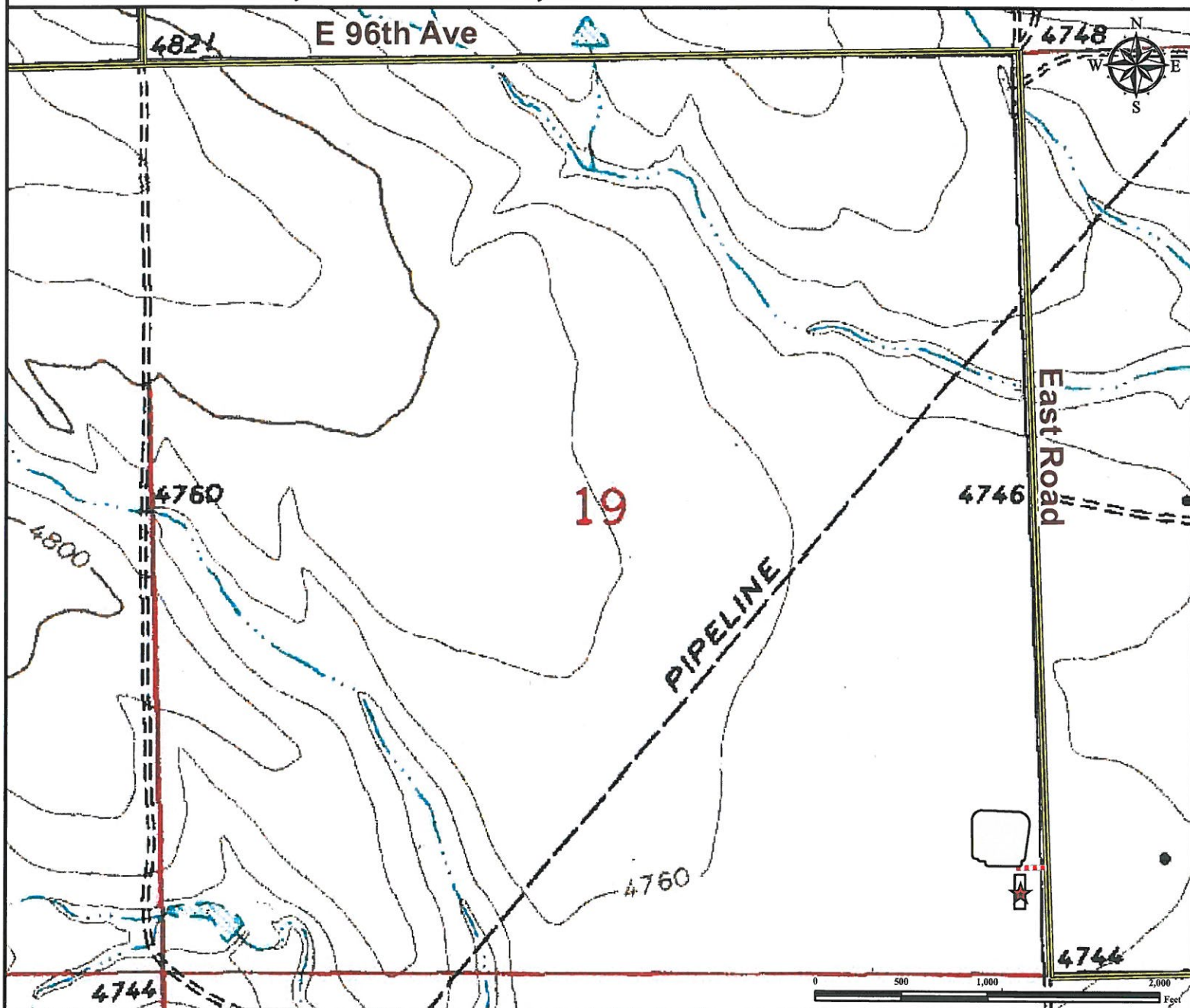


Access Road Map

MIDDLEMIST 19-M FACILITY

SE¼ SE¼ SECTION 19, TOWNSHIP 2 SOUTH, RANGE 57 WEST OF THE 6TH PRINCIPAL MERIDIAN



From Byers, CO: From the intersection of Highway 36 (Main St) and Interstate I-70 (Highway 287), Drive East on Highway 36 (Main St) for ±26.5 miles to Winview Rd.
 Turn Left and proceed North ±10.1 miles to E. 104th Ave.
 Turn Left and proceed West ±3.9 miles to Shamrock Mile Rd.
 Turn Left and proceed South ±1.0 miles to 96th Ave.
 Turn Left and proceed East ±1.0 miles to East Rd.
 Turn Right and proceed South ±0.9 miles to proposed access road.
 Turn Right and proceed West ±179 feet to proposed facility location.

Total distance from Byers, CO to proposed facility location is ±43.43 miles.

Legend



Proposed Facility



Proposed Access Road



Public Road

Reference Location

** All measurements are made from
 ★ Reference Point **

Lat: 39.856863° Long: -103.798523° (NAD83)
 Elevation: 4753 Feet



Use our resources to find yours!
www.petro-fs.com
 (303) 928-7128

Field Date: 04/16/2013
 Drafting Date: 06/04/2013
 Drafter: CPO
 Revision: 2

Data Sources:
 - TOPO courtesy of USGS

Prepared for:

