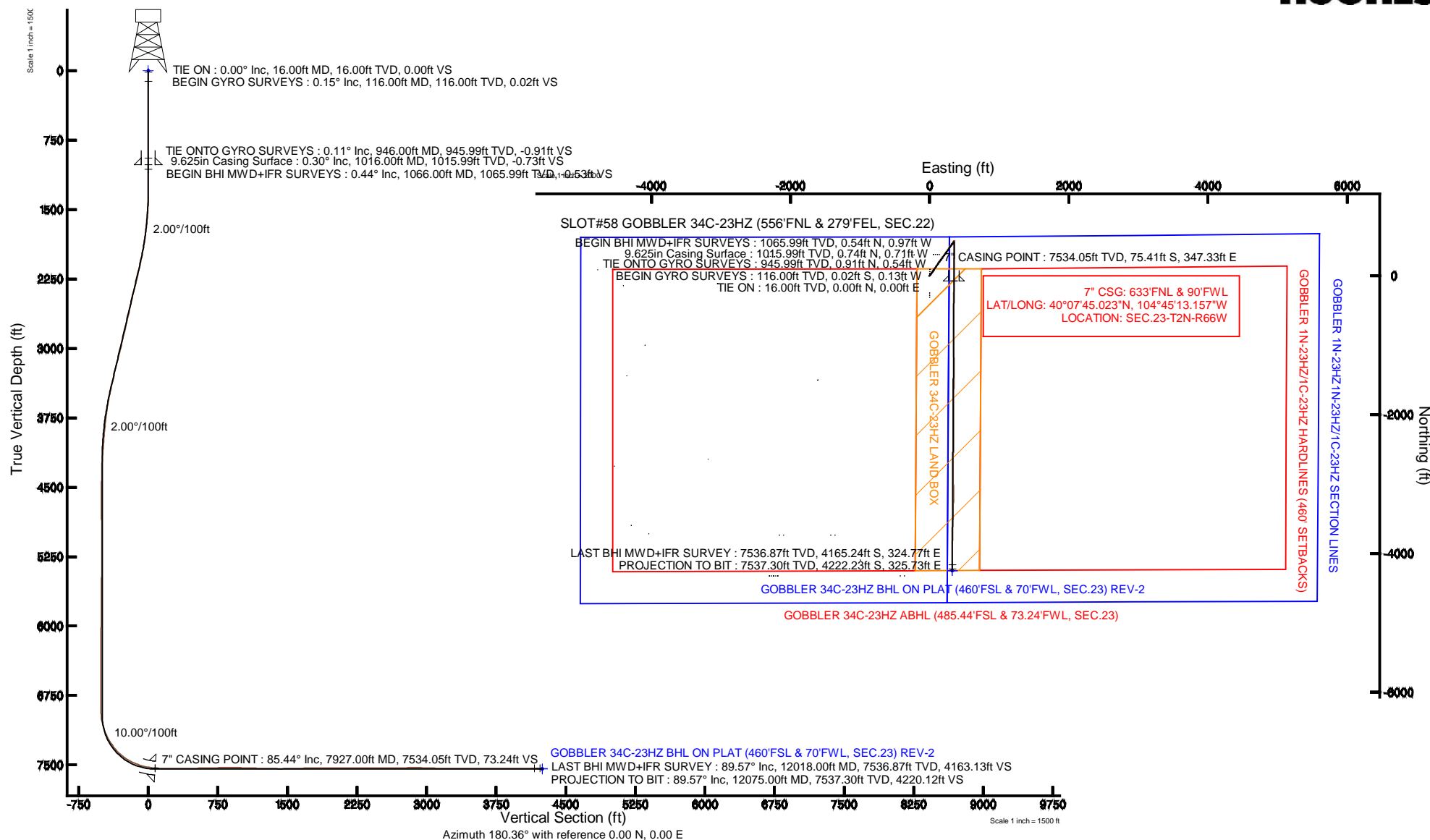


KERR-MCGEE OIL & GAS ONSHORE LP

Location: COLORADO Slot: SLOT#58 GOBBLER 34C-23HZ (556'FNL & 279'FEL, SEC.22)
Field: WELD COUNTY (KERR MCGEE) Well: GOBBLER 34C-23HZ
Facility: SEC.22-T2N-R66W Wellbore: GOBBLER 34C-23HZ PWB

Plot reference wellpath is GOBBLER 34C-23HZ (REV-A.0) PWP

True vertical depths are referenced to XTREME 20 (RKB)	Grid System: NAD83 / Lambert Colorado SP, Northern Zone (501), US feet
Measured depths are referenced to XTREME 20 (RKB)	North Reference: True north
XTREME 20 (RKB) to Mean Sea Level: 5100 feet	Scale: True distance
Mean Sea Level to Mud line (At Slot: SLOT#58 GOBBLER 34C-23HZ (556'FNL & 279'FEL, SEC.22)): 0 feet	Depths are in feet
Coordinates are in feet referenced to Slot	Created by: robiale01 on 28/Aug/2013





Actual Wellpath Report

GOBBLER 34C-23HZ AWP

Page 1 of 7



REFERENCE WELLPATH IDENTIFICATION

Operator	KERR-MCGEE OIL & GAS ONSHORE LP	Slot	SLOT#58 GOBBLER 34C-23HZ (556'FNL & 279'FEL, SEC.22)
Area	COLORADO	Well	GOBBLER 34C-23HZ
Field	WELD COUNTY (KERR MCGEE)	Wellbore	GOBBLER 34C-23HZ AWB
Facility	SEC.22-T2N-R66W		

REPORT SETUP INFORMATION

Projection System	NAD83 / Lambert Colorado SP, Northern Zone (501), US feet	Software System	WellArchitect® 4.0.0
North Reference	True	User	Robiale01
Scale	0.999959	Report Generated	28/Aug/2013 at 13:50
Convergence at slot	n/a	Database/Source file	WA_ANADARKO/GOBBLER_34C-23HZ_AWB.xml

WELLPATH LOCATION

	Local coordinates		Grid coordinates		Geographic coordinates	
	North[ft]	East[ft]	Easting[US ft]	Northing[US ft]	Latitude	Longitude
Slot Location	-83.78	4543.51	3208344.83	1290852.25	40°07'45.768"N	104°45'17.629"W
Facility Reference Pt			3203800.98	1290898.68	40°07'46.600"N	104°46'16.122"W
Field Reference Pt			3197771.84	1268891.29	40°04'09.600"N	104°47'36.000"W

WELLPATH DATUM

Calculation method	Minimum curvature	XTREME 20 (RKB) to Facility Vertical Datum	5100.00ft
Horizontal Reference Pt	Slot	XTREME 20 (RKB) to Mean Sea Level	5100.00ft
Vertical Reference Pt	XTREME 20 (RKB)	XTREME 20 (RKB) to Mud Line at Slot (SLOT#58 GOBBLER 34C-23HZ (556'FNL & 279'FEL, SEC.22))	5100.00ft
MD Reference Pt	XTREME 20 (RKB)	Section Origin	N 0.00, E 0.00 ft
Field Vertical Reference	Mean Sea Level	Section Azimuth	175.59°



Actual Wellpath Report

GOBBLER 34C-23HZ AWP

Page 2 of 7



REFERENCE WELLPATH IDENTIFICATION

Operator	KERR-MCGEE OIL & GAS ONSHORE LP	Slot	SLOT#58 GOBBLER 34C-23HZ (556'FNL & 279'FEL, SEC.22)
Area	COLORADO	Well	GOBBLER 34C-23HZ
Field	WELD COUNTY (KERR MCGEE)	Wellbore	GOBBLER 34C-23HZ AWP
Facility	SEC.22-T2N-R66W		

WELLPATH DATA (154 stations) † = interpolated/extrapolated station

MD [ft]	Inclination [°]	Azimuth [°]	TVD [ft]	Vert Sect [ft]	North [ft]	East [ft]	Latitude	Longitude	DLS [°/100ft]	Comments
0.00†	0.000	260.420	0.00	0.00	0.00	0.00	40°07'45.768"N	104°45'17.629"W	0.00	
16.00	0.000	260.420	16.00	0.00	0.00	0.00	40°07'45.768"N	104°45'17.629"W	0.00	TIE ON
116.00	0.150	260.420	116.00	0.01	-0.02	-0.13	40°07'45.768"N	104°45'17.631"W	0.15	BEGIN GYRO SURVEYS
216.00	0.260	62.240	216.00	-0.07	0.06	-0.06	40°07'45.769"N	104°45'17.630"W	0.41	
316.00	0.310	24.310	316.00	-0.39	0.41	0.25	40°07'45.772"N	104°45'17.626"W	0.19	
416.00	0.040	350.240	416.00	-0.67	0.70	0.36	40°07'45.775"N	104°45'17.624"W	0.28	
516.00	0.320	22.400	516.00	-0.95	0.99	0.46	40°07'45.778"N	104°45'17.623"W	0.29	
616.00	0.300	272.060	616.00	-1.23	1.26	0.31	40°07'45.780"N	104°45'17.625"W	0.51	
716.00	0.200	0.200	716.00	-1.43	1.44	0.04	40°07'45.782"N	104°45'17.628"W	0.36	
816.00	0.310	239.680	816.00	-1.49	1.48	-0.19	40°07'45.783"N	104°45'17.631"W	0.45	
916.00	0.370	193.540	915.99	-1.06	1.03	-0.50	40°07'45.778"N	104°45'17.635"W	0.27	
946.00	0.110	213.500	945.99	-0.95	0.91	-0.54	40°07'45.777"N	104°45'17.636"W	0.90	TIE ONTO GYRO SURVEYS
1066.00	0.440	233.490	1065.99	-0.61	0.54	-0.97	40°07'45.773"N	104°45'17.641"W	0.28	BEGIN BHI MWD+IFR SURVEYS
1160.00	0.330	218.180	1159.99	-0.22	0.11	-1.43	40°07'45.769"N	104°45'17.647"W	0.16	
1251.00	0.240	293.880	1250.99	-0.12	-0.02	-1.76	40°07'45.768"N	104°45'17.652"W	0.39	
1342.00	1.860	35.950	1341.97	-1.33	1.25	-1.07	40°07'45.780"N	104°45'17.643"W	2.11	
1434.00	3.040	34.460	1433.89	-4.37	4.48	1.19	40°07'45.812"N	104°45'17.614"W	1.28	
1525.00	4.820	45.510	1524.67	-8.71	9.14	5.28	40°07'45.858"N	104°45'17.561"W	2.12	
1617.00	6.520	40.880	1616.22	-14.87	15.80	11.46	40°07'45.924"N	104°45'17.482"W	1.91	
1708.00	8.180	39.600	1706.47	-23.17	24.70	18.96	40°07'46.012"N	104°45'17.385"W	1.83	
1799.00	9.980	40.170	1796.32	-33.44	35.71	28.18	40°07'46.121"N	104°45'17.266"W	1.98	
1891.00	11.160	34.190	1886.76	-46.08	49.17	38.32	40°07'46.254"N	104°45'17.136"W	1.75	
1982.00	12.350	30.540	1975.85	-60.94	64.84	48.22	40°07'46.409"N	104°45'17.008"W	1.54	
2073.00	13.520	30.400	2064.54	-77.65	82.39	58.55	40°07'46.582"N	104°45'16.875"W	1.29	
2165.00	14.850	31.350	2153.74	-96.04	101.74	70.12	40°07'46.773"N	104°45'16.726"W	1.47	
2256.00	15.800	32.940	2241.50	-115.35	122.09	82.93	40°07'46.975"N	104°45'16.561"W	1.14	
2348.00	16.260	32.640	2329.92	-135.59	143.45	96.68	40°07'47.186"N	104°45'16.384"W	0.51	
2440.00	15.100	32.000	2418.50	-155.51	164.46	109.98	40°07'47.393"N	104°45'16.213"W	1.27	
2530.00	15.370	33.790	2505.34	-174.32	184.31	122.83	40°07'47.589"N	104°45'16.048"W	0.60	
2621.00	15.870	37.210	2592.98	-193.10	204.25	137.06	40°07'47.786"N	104°45'15.864"W	1.15	
2712.00	15.970	39.030	2680.49	-211.49	223.88	152.47	40°07'47.980"N	104°45'15.666"W	0.56	
2804.00	16.160	34.950	2768.90	-230.58	244.21	167.77	40°07'48.181"N	104°45'15.469"W	1.24	
2896.00	16.380	36.890	2857.21	-250.22	265.08	182.89	40°07'48.388"N	104°45'15.274"W	0.64	
2981.00	16.390	38.630	2938.76	-267.99	284.03	197.57	40°07'48.575"N	104°45'15.085"W	0.58	
3066.00	16.820	35.770	3020.22	-286.15	303.38	212.25	40°07'48.766"N	104°45'14.896"W	1.09	
3151.00	17.340	35.610	3101.47	-305.25	323.65	226.81	40°07'48.966"N	104°45'14.709"W	0.61	
3236.00	16.430	34.650	3182.80	-324.28	343.84	241.02	40°07'49.166"N	104°45'14.526"W	1.12	
3321.00	15.680	32.770	3264.49	-342.77	363.39	254.08	40°07'49.359"N	104°45'14.358"W	1.07	
3407.00	16.090	33.910	3347.20	-361.38	383.05	267.01	40°07'49.553"N	104°45'14.191"W	0.60	
3492.00	14.240	35.520	3429.24	-378.64	401.34	279.66	40°07'49.734"N	104°45'14.029"W	2.23	
3577.00	13.150	32.130	3511.82	-394.42	418.04	290.88	40°07'49.899"N	104°45'13.884"W	1.59	
3662.00	11.590	36.600	3594.85	-408.64	433.08	301.11	40°07'50.048"N	104°45'13.752"W	2.15	
3747.00	9.850	35.990	3678.36	-420.62	445.82	310.48	40°07'50.174"N	104°45'13.632"W	2.05	
3832.00	8.070	32.700	3762.32	-430.91	456.72	317.97	40°07'50.281"N	104°45'13.535"W	2.18	
3917.00	7.370	41.210	3846.56	-439.48	465.84	324.79	40°07'50.372"N	104°45'13.448"W	1.57	



Actual Wellpath Report

GOBBLER 34C-23HZ AWP

Page 3 of 7



REFERENCE WELLPATH IDENTIFICATION

Operator	KERR-MCGEE OIL & GAS ONSHORE LP	Slot	SLOT#58 GOBBLER 34C-23HZ (556'FNL & 279'FEL, SEC.22)
Area	COLORADO	Well	GOBBLER 34C-23HZ
Field	WELD COUNTY (KERR MCGEE)	Wellbore	GOBBLER 34C-23HZ AWP
Facility	SEC.22-T2N-R66W		

WELLPATH DATA (154 stations)

MD [ft]	Inclination [°]	Azimuth [°]	TVD [ft]	Vert Sect [ft]	North [ft]	East [ft]	Latitude	Longitude	DLS [°/100ft]	Comments
4002.00	5.980	38.200	3930.98	-446.55	473.43	331.12	40°07'50.446"N	104°45'13.366"W	1.69	
4088.00	6.370	42.410	4016.48	-453.12	480.47	337.11	40°07'50.516"N	104°45'13.289"W	0.69	
4173.00	5.400	35.570	4101.03	-459.41	487.20	342.61	40°07'50.583"N	104°45'13.218"W	1.41	
4258.00	4.070	19.550	4185.74	-465.23	493.30	345.95	40°07'50.643"N	104°45'13.175"W	2.19	
4343.00	2.540	38.810	4270.60	-469.36	497.61	348.14	40°07'50.685"N	104°45'13.147"W	2.20	
4428.00	1.320	31.910	4355.55	-471.52	499.91	349.84	40°07'50.708"N	104°45'13.125"W	1.46	
4513.00	0.480	292.880	4440.54	-472.47	500.88	350.03	40°07'50.718"N	104°45'13.123"W	1.73	
4599.00	1.020	271.710	4526.54	-472.72	501.04	348.93	40°07'50.719"N	104°45'13.137"W	0.70	
4684.00	0.530	321.100	4611.53	-473.12	501.37	347.93	40°07'50.723"N	104°45'13.150"W	0.92	
4769.00	0.690	302.430	4696.52	-473.75	501.95	347.25	40°07'50.728"N	104°45'13.158"W	0.30	
4854.00	0.910	225.260	4781.52	-473.62	501.75	346.34	40°07'50.726"N	104°45'13.170"W	1.19	
4939.00	1.540	243.380	4866.50	-472.76	500.76	344.83	40°07'50.717"N	104°45'13.190"W	0.86	
5024.00	0.990	247.220	4951.48	-472.09	499.97	343.14	40°07'50.709"N	104°45'13.211"W	0.65	
5110.00	0.990	95.830	5037.47	-471.73	499.60	343.19	40°07'50.705"N	104°45'13.211"W	2.23	
5195.00	1.880	97.260	5122.44	-471.31	499.35	345.30	40°07'50.703"N	104°45'13.183"W	1.05	
5280.00	0.370	65.770	5207.43	-471.13	499.29	346.94	40°07'50.702"N	104°45'13.162"W	1.85	
5365.00	0.410	35.540	5292.42	-471.45	499.65	347.37	40°07'50.706"N	104°45'13.157"W	0.24	
5451.00	0.530	49.630	5378.42	-471.92	500.16	347.85	40°07'50.711"N	104°45'13.151"W	0.19	
5536.00	0.680	44.820	5463.42	-472.48	500.77	348.50	40°07'50.717"N	104°45'13.142"W	0.19	
5621.00	0.800	36.160	5548.41	-473.26	501.61	349.21	40°07'50.725"N	104°45'13.133"W	0.19	
5706.00	0.970	29.340	5633.40	-474.31	502.71	349.91	40°07'50.736"N	104°45'13.124"W	0.23	
5792.00	0.150	50.920	5719.39	-474.98	503.42	350.35	40°07'50.743"N	104°45'13.118"W	0.97	
5877.00	0.360	30.380	5804.39	-475.26	503.72	350.58	40°07'50.746"N	104°45'13.116"W	0.27	
5962.00	0.500	8.400	5889.39	-475.84	504.32	350.77	40°07'50.752"N	104°45'13.113"W	0.25	
6047.00	0.850	353.020	5974.39	-476.83	505.31	350.74	40°07'50.761"N	104°45'13.113"W	0.46	
6132.00	0.480	52.680	6059.38	-477.66	506.15	350.95	40°07'50.770"N	104°45'13.111"W	0.87	
6217.00	0.730	27.230	6144.38	-478.31	506.85	351.48	40°07'50.777"N	104°45'13.104"W	0.43	
6303.00	1.400	345.440	6230.36	-479.81	508.35	351.47	40°07'50.792"N	104°45'13.104"W	1.14	
6388.00	0.450	250.060	6315.35	-480.75	509.24	350.89	40°07'50.800"N	104°45'13.112"W	1.78	
6473.00	0.170	231.920	6400.35	-480.59	509.05	350.48	40°07'50.798"N	104°45'13.117"W	0.35	
6558.00	0.340	189.890	6485.35	-480.27	508.73	350.34	40°07'50.795"N	104°45'13.119"W	0.28	
6644.00	0.320	195.270	6571.35	-479.80	508.24	350.23	40°07'50.790"N	104°45'13.120"W	0.04	
6729.00	0.250	206.360	6656.35	-479.42	507.85	350.08	40°07'50.787"N	104°45'13.122"W	0.10	
6814.00	0.220	178.250	6741.35	-479.09	507.52	350.01	40°07'50.783"N	104°45'13.123"W	0.14	
6899.00	0.180	212.510	6826.35	-478.82	507.24	349.94	40°07'50.781"N	104°45'13.124"W	0.15	
6985.00	0.430	221.740	6912.35	-478.49	506.89	349.65	40°07'50.777"N	104°45'13.127"W	0.30	
7027.00	3.150	182.600	6954.32	-477.24	505.62	349.50	40°07'50.765"N	104°45'13.130"W	6.74	
7070.00	6.660	169.780	6997.16	-473.58	501.98	349.88	40°07'50.729"N	104°45'13.125"W	8.50	
7112.00	11.430	171.790	7038.62	-467.00	495.46	350.91	40°07'50.664"N	104°45'13.111"W	11.38	
7155.00	15.350	172.850	7080.45	-457.06	485.59	352.23	40°07'50.567"N	104°45'13.094"W	9.13	
7197.00	19.520	175.100	7120.51	-444.49	473.08	353.52	40°07'50.443"N	104°45'13.078"W	10.06	
7240.00	23.750	176.520	7160.47	-428.64	457.27	354.66	40°07'50.287"N	104°45'13.063"W	9.91	
7282.00	27.560	179.300	7198.33	-410.48	439.11	355.29	40°07'50.107"N	104°45'13.055"W	9.51	
7325.00	30.800	179.630	7235.86	-389.57	418.15	355.49	40°07'49.900"N	104°45'13.052"W	7.54	
7367.00	33.440	178.300	7271.43	-367.28	395.82	355.90	40°07'49.680"N	104°45'13.047"W	6.51	



Actual Wellpath Report

GOBBLER 34C-23HZ AWP

Page 4 of 7



REFERENCE WELLPATH IDENTIFICATION

Operator	KERR-MCGEE OIL & GAS ONSHORE LP	Slot	SLOT#58 GOBBLER 34C-23HZ (556'FNL & 279'FEL, SEC.22)
Area	COLORADO	Well	GOBBLER 34C-23HZ
Field	WELD COUNTY (KERR MCGEE)	Wellbore	GOBBLER 34C-23HZ AWP
Facility	SEC.22-T2N-R66W		

WELLPATH DATA (154 stations) † = interpolated/extrapolated station

MD [ft]	Inclination [°]	Azimuth [°]	TVD [ft]	Vert Sect [ft]	North [ft]	East [ft]	Latitude	Longitude	DLS [°/100ft]	Comments
7410.00	36.550	180.440	7306.65	-342.68	371.17	356.15	40°07'49.436"N	104°45'13.044"W	7.77	
7453.00	41.490	181.080	7340.05	-315.72	344.11	355.78	40°07'49.168"N	104°45'13.049"W	11.53	
7496.00	45.980	181.370	7371.11	-286.15	314.40	355.15	40°07'48.875"N	104°45'13.057"W	10.45	
7538.00	50.560	181.810	7399.06	-254.99	283.07	354.27	40°07'48.565"N	104°45'13.068"W	10.93	
7581.00	55.290	182.290	7424.98	-220.91	248.80	353.04	40°07'48.227"N	104°45'13.084"W	11.04	
7623.00	60.290	182.570	7447.36	-185.63	213.31	351.53	40°07'47.876"N	104°45'13.103"W	11.92	
7666.00	63.460	182.630	7467.63	-148.00	175.43	349.81	40°07'47.502"N	104°45'13.126"W	7.37	
7708.00	68.250	182.410	7484.80	-109.97	137.15	348.13	40°07'47.123"N	104°45'13.147"W	11.41	
7751.00	71.760	180.530	7499.50	-69.78	96.76	347.10	40°07'46.724"N	104°45'13.160"W	9.14	
7794.00	75.640	179.370	7511.57	-28.63	55.50	347.14	40°07'46.316"N	104°45'13.160"W	9.39	
7837.00	78.220	179.630	7521.29	13.15	13.62	347.50	40°07'45.903"N	104°45'13.155"W	6.03	
7879.00	81.770	180.110	7528.59	54.39	-27.74	347.60	40°07'45.494"N	104°45'13.154"W	8.53	
7895.00	82.710	180.430	7530.75	70.19	-43.59	347.52	40°07'45.337"N	104°45'13.155"W	6.20	
7927.00†	85.436	180.258	7534.05	101.91	-75.41	347.33	40°07'45.023"N	104°45'13.157"W	8.53	7" CASING POINT
7953.00	87.650	180.120	7535.62	127.77	-101.36	347.25	40°07'44.766"N	104°45'13.159"W	8.53	
8024.00	88.430	180.500	7538.05	198.49	-172.32	346.86	40°07'44.065"N	104°45'13.164"W	1.22	
8097.00	89.380	180.350	7539.44	271.22	-245.31	346.32	40°07'43.344"N	104°45'13.171"W	1.32	
8171.00	90.460	180.740	7539.55	344.94	-319.30	345.62	40°07'42.613"N	104°45'13.180"W	1.55	
8256.00	90.950	180.150	7538.50	429.63	-404.29	344.96	40°07'41.773"N	104°45'13.188"W	0.90	
8342.00	91.440	180.930	7536.71	515.29	-490.27	344.15	40°07'40.923"N	104°45'13.199"W	1.07	
8427.00	91.500	180.840	7534.53	599.90	-575.23	342.83	40°07'40.084"N	104°45'13.215"W	0.13	
8512.00	91.160	180.870	7532.55	684.51	-660.20	341.57	40°07'39.244"N	104°45'13.232"W	0.40	
8597.00	91.110	180.850	7530.87	769.14	-745.17	340.29	40°07'38.404"N	104°45'13.248"W	0.06	
8682.00	90.770	179.240	7529.48	853.87	-830.16	340.22	40°07'37.564"N	104°45'13.249"W	1.94	
8767.00	89.070	179.300	7529.60	938.69	-915.15	341.31	40°07'36.724"N	104°45'13.235"W	2.00	
8852.00	89.480	179.660	7530.67	1023.48	-1000.14	342.08	40°07'35.885"N	104°45'13.225"W	0.64	
8938.00	87.910	177.900	7532.63	1109.32	-1086.09	343.91	40°07'35.035"N	104°45'13.202"W	2.74	
9023.00	87.750	178.870	7535.85	1194.16	-1170.99	346.30	40°07'34.196"N	104°45'13.171"W	1.16	
9108.00	89.010	179.890	7538.25	1278.94	-1255.95	347.22	40°07'33.357"N	104°45'13.159"W	1.91	
9193.00	88.680	179.270	7539.96	1363.71	-1340.93	347.84	40°07'32.517"N	104°45'13.151"W	0.83	
9278.00	90.090	179.620	7540.88	1448.51	-1425.92	348.67	40°07'31.677"N	104°45'13.141"W	1.71	
9363.00	91.170	180.590	7539.94	1533.24	-1510.91	348.51	40°07'30.837"N	104°45'13.143"W	1.71	
9448.00	91.510	181.160	7537.95	1617.86	-1595.88	347.21	40°07'29.997"N	104°45'13.159"W	0.78	
9533.00	91.760	180.580	7535.53	1702.46	-1680.83	345.92	40°07'29.158"N	104°45'13.176"W	0.74	
9618.00	90.800	180.350	7533.63	1787.13	-1765.81	345.23	40°07'28.318"N	104°45'13.185"W	1.16	
9703.00	91.170	180.300	7532.17	1871.83	-1850.79	344.75	40°07'27.478"N	104°45'13.191"W	0.44	
9788.00	89.750	180.470	7531.49	1956.53	-1935.79	344.18	40°07'26.638"N	104°45'13.198"W	1.68	
9873.00	89.450	180.610	7532.08	2041.21	-2020.78	343.38	40°07'25.798"N	104°45'13.209"W	0.39	
9958.00	89.220	180.650	7533.07	2125.87	-2105.77	342.45	40°07'24.959"N	104°45'13.221"W	0.27	
10044.00	90.270	180.150	7533.45	2211.57	-2191.77	341.84	40°07'24.109"N	104°45'13.228"W	1.35	
10129.00	90.400	180.750	7532.95	2296.26	-2276.76	341.18	40°07'23.269"N	104°45'13.237"W	0.72	
10214.00	89.530	179.970	7533.00	2380.96	-2361.76	340.64	40°07'22.429"N	104°45'13.244"W	1.37	
10299.00	89.250	179.950	7533.91	2465.71	-2446.75	340.70	40°07'21.589"N	104°45'13.243"W	0.33	
10384.00	89.960	180.840	7534.50	2550.41	-2531.75	340.12	40°07'20.749"N	104°45'13.251"W	1.34	
10470.00	90.550	180.360	7534.11	2636.08	-2617.74	339.22	40°07'19.899"N	104°45'13.262"W	0.88	



Actual Wellpath Report

GOBBLER 34C-23HZ AWP

Page 5 of 7



REFERENCE WELLPATH IDENTIFICATION

Operator	KERR-MCGEE OIL & GAS ONSHORE LP	Slot	SLOT#58 GOBBLER 34C-23HZ (556'FNL & 279'FEL, SEC.22)
Area	COLORADO	Well	GOBBLER 34C-23HZ
Field	WELD COUNTY (KERR MCGEE)	Wellbore	GOBBLER 34C-23HZ AWP
Facility	SEC.22-T2N-R66W		

WELLPATH DATA (154 stations)

MD [ft]	Inclination [°]	Azimuth [°]	TVD [ft]	Vert Sect [ft]	North [ft]	East [ft]	Latitude	Longitude	DLS [°/100ft]	Comments
10555.00	91.380	180.740	7532.68	2720.75	-2702.72	338.40	40°07'19.059"N	104°45'13.273"W	1.07	
10640.00	91.100	180.580	7530.84	2805.39	-2787.70	337.42	40°07'18.220"N	104°45'13.286"W	0.38	
10725.00	90.460	179.930	7529.68	2890.10	-2872.69	337.04	40°07'17.380"N	104°45'13.290"W	1.07	
10811.00	88.020	178.530	7530.83	2975.91	-2958.67	338.20	40°07'16.530"N	104°45'13.276"W	3.27	
10896.00	87.830	177.980	7533.90	3060.77	-3043.57	340.79	40°07'15.691"N	104°45'13.242"W	0.68	
10981.00	88.430	180.000	7536.68	3145.57	-3128.51	342.28	40°07'14.852"N	104°45'13.223"W	2.48	
11066.00	89.290	181.130	7538.37	3230.23	-3213.48	341.44	40°07'14.012"N	104°45'13.234"W	1.67	
11151.00	90.030	181.800	7538.87	3314.78	-3298.45	339.27	40°07'13.172"N	104°45'13.262"W	1.17	
11236.00	90.560	181.470	7538.43	3399.30	-3383.42	336.85	40°07'12.333"N	104°45'13.293"W	0.73	
11321.00	90.120	181.630	7537.93	3483.84	-3468.38	334.55	40°07'11.493"N	104°45'13.323"W	0.55	
11406.00	89.410	181.330	7538.28	3568.39	-3553.35	332.35	40°07'10.653"N	104°45'13.351"W	0.91	
11492.00	89.820	181.100	7538.86	3653.97	-3639.33	330.53	40°07'09.804"N	104°45'13.374"W	0.55	
11577.00	90.590	181.080	7538.55	3738.58	-3724.32	328.91	40°07'08.964"N	104°45'13.395"W	0.91	
11662.00	90.530	181.810	7537.72	3823.13	-3809.28	326.77	40°07'08.124"N	104°45'13.423"W	0.86	
11747.00	89.570	180.870	7537.65	3907.70	-3894.26	324.78	40°07'07.284"N	104°45'13.448"W	1.58	
11833.00	90.490	180.290	7537.60	3993.38	-3980.25	323.91	40°07'06.435"N	104°45'13.460"W	1.26	
11918.00	90.460	179.850	7536.90	4078.11	-4065.25	323.81	40°07'05.595"N	104°45'13.461"W	0.52	
12018.00	89.570	179.040	7536.87	4177.89	-4165.24	324.77	40°07'04.607"N	104°45'13.449"W	1.20	LAST BHI MWD+IFR SURVEY
12075.00	89.570	179.040	7537.30	4234.78	-4222.23	325.73	40°07'04.043"N	104°45'13.436"W	0.00	PROJECTION TO BIT

HOLE & CASING SECTIONS - Ref Wellbore: GOBBLER 34C-23HZ AWP Ref Wellpath: GOBBLER 34C-23HZ AWP

String/Diameter	Start MD [ft]	End MD [ft]	Interval [ft]	Start TVD [ft]	End TVD [ft]	Start N/S [ft]	Start E/W [ft]	End N/S [ft]	End E/W [ft]
13.5in Open Hole	16.00	1016.00	1000.00	16.00	1015.99	0.00	0.00	0.74	-0.71
9.625in Casing Surface	16.00	1016.00	1000.00	16.00	1015.99	0.00	0.00	0.74	-0.71
8.75in Open Hole	1016.00	7953.00	6937.00	1015.99	7535.62	0.74	-0.71	-101.36	347.25
7in Casing Intermediate	16.00	7927.00	7911.00	16.00	7534.05	0.00	0.00	-75.41	347.33
6.125in Open Hole	7953.00	12075.00	4122.00	7535.62	7537.30	-101.36	347.25	-4222.23	325.73



Actual Wellpath Report

GOBBLER 34C-23HZ AWP

Page 6 of 7



REFERENCE WELLPATH IDENTIFICATION

Operator	KERR-MCGEE OIL & GAS ONSHORE LP	Slot	SLOT#58 GOBBLER 34C-23HZ (556'FNL & 279'FEL, SEC.22)
Area	COLORADO	Well	GOBBLER 34C-23HZ
Field	WELD COUNTY (KERR MCGEE)	Wellbore	GOBBLER 34C-23HZ AWP
Facility	SEC.22-T2N-R66W		

TARGETS

Name	MD [ft]	TVD [ft]	North [ft]	East [ft]	Grid East [US ft]	Grid North [US ft]	Latitude	Longitude	Shape
GOBBLER 1N-23HZ1N-23HZ/1C-23HZ SECTION LINES		-3.00	-4454.92	4472.39	3212854.29	1286435.25	40°07'01.740"N	104°44'20.062"W	polygon
GOBBLER SECTION 22		30.00	155.62	-1820.42	3206523.24	1290992.56	40°07'47.305"N	104°45'41.065"W	polygon
GOBBLER 1N-23HZ/1C-23HZ HARDLINES (460' SETBACKS)		7233.00	-4454.92	4472.39	3212854.29	1286435.25	40°07'01.740"N	104°44'20.062"W	polygon
VICTOR USX #23-5		7378.00	-1589.94	709.94	3209068.07	1289268.40	40°07'30.056"N	104°45'08.490"W	circle
GOBBLER HARDLINES (460' SETBACKS)		7430.00	155.62	-1820.42	3206523.24	1290992.56	40°07'47.305"N	104°45'41.065"W	polygon
VICTOR #21-23		7484.47	243.12	2462.44	3210805.04	1291116.04	40°07'48.169"N	104°44'45.927"W	circle
GOBBLER 34C-23HZ BHL ON PLAT (460'FSL & 70'FWL, SEC.23) REV-1		7540.00	-4247.67	322.49	3208702.98	1286607.62	40°07'03.792"N	104°45'13.478"W	point
GOBBLER 34C-23HZ BHL ON PLAT (460'FSL & 70'FWL, SEC.23) REV-2		7545.00	-4247.67	322.49	3208702.98	1286607.62	40°07'03.792"N	104°45'13.478"W	point
GOBBLER 34C-23HZ LAND BOX		7545.00	0.00	0.00	3208344.83	1290852.25	40°07'45.768"N	104°45'17.629"W	polygon
VICTOR USX #23-6		7553.00	-1551.56	2016.89	3210374.60	1289317.76	40°07'30.435"N	104°44'51.665"W	circle
VICTOR USX #23-4		7558.00	-374.38	1269.09	3209616.97	1290488.56	40°07'42.068"N	104°45'01.291"W	circle
ARROWHEAD FARMS #31-23		7573.00	-330.11	3499.05	3211846.38	1290551.56	40°07'42.503"N	104°44'32.583"W	circle
ARROWHEAD FARMS #32-23		7582.00	-1292.70	3575.66	3211931.07	1289589.69	40°07'32.991"N	104°44'31.598"W	circle

WELLPATH COMPOSITION - Ref Wellbore: GOBBLER 34C-23HZ AWP Ref Wellpath: GOBBLER 34C-23HZ AWP

Start MD [ft]	End MD [ft]	Positional Uncertainty Model	Log Name/Comment	Wellbore
16.00	946.00	Generic gyro - continuous (Standard)	MS ENERGY WIRELINE GYRO SURVEYS <116-946>	GOBBLER 34C-23HZ AWP
946.00	7953.00	NaviTrak (MAGCORR,IFR)	BHI MAD+IFR SURVEYS 8 3/4" HOLE <1066-7953>	GOBBLER 34C-23HZ AWP
7953.00	12018.00	OnTrak (MAGCORR,IFR)	BHI MWD+IFR SURVEYS 6 1/8" HOLE <8024-12018>	GOBBLER 34C-23HZ AWP
12018.00	12075.00	Blind Drilling (std)	Projection to bit	GOBBLER 34C-23HZ AWP



Actual Wellpath Report

GOBBLER 34C-23HZ AWP

Page 7 of 7



REFERENCE WELLPATH IDENTIFICATION

Operator	KERR-MCGEE OIL & GAS ONSHORE LP	Slot	SLOT#58 GOBBLER 34C-23HZ (556'FNL & 279'FEL, SEC.22)
Area	COLORADO	Well	GOBBLER 34C-23HZ
Field	WELD COUNTY (KERR MCGEE)	Wellbore	GOBBLER 34C-23HZ AWB
Facility	SEC.22-T2N-R66W		

WELLPATH COMMENTS

MD [ft]	Inclination [°]	Azimuth [°]	TVD [ft]	Comment
16.00	0.000	260.420	16.00	TIE ON
116.00	0.150	260.420	116.00	BEGIN GYRO SURVEYS
946.00	0.110	213.500	945.99	TIE ONTO GYRO SURVEYS
1066.00	0.440	233.490	1065.99	BEGIN BHI MWD+IFR SURVEYS
7927.00	85.436	180.258	7534.05	7" CASING POINT
12018.00	89.570	179.040	7536.87	LAST BHI MWD+IFR SURVEY
12075.00	89.570	179.040	7537.30	PROJECTION TO BIT