



Realtime Log

Gamma Ray

Scale:

1:240 TRUE VERTICAL DEPTH

Company: Kerr-McGee Oil & Gas Onshore LP

Well: Gobbler 34C-23HZ

Field: Wattenburg

County: Weld State: Colorado

Status:

Field Print

Surface Location:

Latitude: 40° 7' 45.768" N

Longitude: 104° 45' 17.629" W

Other Services:

Wellbore Survey

API Number: 05-123-36476

Section: 22 TWN: 2N Range: 66W

Permanent Datum (P.D.): Mean Sea Level Elevation: 0.00 ft.

Log Measured From: Drill Floor 5100.00 ft. Above P.D.

Depth Reference: Driller's Depth

Elevations:

KB: N/A
DF: 5100.00 ft.
GL: 5084.00 ft.

Interval Logged

Dates

Magnetic Field Reference

Top: 7000.0 ft. Date From: 24/Jul/13 Dip Angle: 66.93° Azi Reference North: True

Bottom: 12027.0 ft. Date To: 30/Jul/13 Total Mag to Reference

Spud Date: 24/Jul/13 Field Strength: 52987.0 nT North Correction: 8.44°

Borehole Record

Casing Record

Hole Size	From	To	Size	Weight	From	To
13.500 in.	Surface	1026.0 ft.	9.625 in.	36.00 lb/ft	Surface	1016.0 ft.
8.750 in.	1026.0 ft.	7953.0 ft.	7.000 in.	26.00 lb/ft	Surface	7927.0 ft.
6.125 in.	7953.0 ft.	12075.0 ft.				

Mud Record

Deviation Record

Type	From	To	Hole Size	Interval	Inc / Az (Start)	Inc / Az (End)
Water Based Mud	1026.0 ft.	12076.0 ft.	13.500 in.	1026.0 ft.	0.0° / 81.4°	0.1° / 213.5°
			8.750 in.	6927.0 ft.	0.4° / 233.5°	82.7° / 180.4°
			6.125 in.	4122.0 ft.	87.6° / 180.1°	89.6° / 179.0°
					/	/
					/	/
					/	/
					/	/

Acquisition System Software Version

Other

Advantage	2.20U4	Rpt: / Contractor:	Xtreme 20	/ Xtreme Coil Drilling Corp.
PATS	6.4.1.34	Job No:	5587288	
		District: / Unit:	RMD	/ D&E

INTEQ does not guarantee the accuracy or correctness of interpretations provided in or from this log. Since all interpretations are opinions based on measurements, INTEQ shall under no circumstances be responsible for consequential damages or any other loss, costs, damages or expenses incurred or sustained in connection with the use of any such interpretations. INTEQ disclaims all expressed and implied warranties related to this service. INTEQ's liabilities and obligations shall be governed by INTEQ's Standard Terms and Conditions.

Log Run Summary

LWD Run No.	BHA Run No.	Bit Run No.	Bit Size (in.)	Bit Type	Bit Gauge Length (in.)	Assembly Type	Logged Interval		Bit Depth Interval		Date / Time				Circ.
							Top	Bottom	From	To	Start		End		Time (hrs.)
							(ft.)	(ft.)	(ft.)	(ft.)					
2	2	2	8.750	PDC	3.000	Steerable	7000.0	7899.0	1026.0	7953.0	24/Jul/2013	20:10	26/Jul/2013	20:25	43.6
3	3	3	6.125	PDC	3.000	Steerable	7899.0	12027.0	7953.0	12076.0	28/Jul/2013	09:00	30/Jul/2013	02:40	44.2

Crew

Name	Arrive	Depart	Name	Arrive	Depart	Name	Arrive	Depart
	Wellsite	Wellsite		Wellsite	Wellsite		Wellsite	Wellsite
Mark Dix	24 July 2013	30 July 2013	Adam Schlenz	24 July 2013	30 July 2013			

Witness

Name	LWD Run Number
Marvin Hackworth	1,2
Ricky Carroll	1,2

Mud Properties Record

Date / Time	LWD Run No.	Measured Depth (ft.)	Mud Type	Density (ppg)	Viscosity (sec/qt)	pH	Fluid Loss (cc)	Oil / Water	Source	Total Chlorides (ppm)	K+
26 July 2013 08:00	1	7100.0	Water Based	10.2	43	8.2	N/A	3.5/88.2	Active Mud Pit	1700	0.0
26 July 2013 20:00	1	7940.0	Water Based	10.0	44	8.3	N/A	4.5/87.9	Active Mud Pit	1700	0.0
27 July 2013 08:00	1	7953.0	Water Based	10.1	45	8.2	N/A	4.5/87.5	Active Mud Pit	1800	0.0
28 July 2013 08:00	2	7953.0	Water Based	10.1	45	8.2	N/A	4.5/87.5	Active Mud Pit	1800	0.0
28 July 2013 20:00	2	9055.0	Water Based	9.9	42	8.3	N/A	4.5/88.2	Active Mud Pit	1800	0.0
29 July 2013 07:00	2	9962.0	Water Based	9.8	45	8.2	N/A	4.5/88.2	Active Mud Pit	1800	0.0
29 July 2013 20:00	2	11230.0	Water Based	10.0	42	8.5	N/A	5.0/87.0	Active Mud Pit	1800	0.0

Mud Resistivity Record

Date / Time	LWD Run No.	Measured Depth (ft.)	Surface Temp (deg F)	Surface			BHCT (deg F)	Downhole		
				Rm (ohm.m)	Rmf (ohm.m)	Rmc (ohm.m)		Rm @ BHCT (ohm.m)	Rmf @ BHCT (ohm.m)	Rmc @ BHCT (ohm.m)
27/Jul/2013 17:55	2	7953.0	72	1.10	N/A	N/A	180	0.46	N/A	N/A
28/Jul/2013 13:20	2	8313.0	77	1.54	N/A	N/A	182	0.66	N/A	N/A
29/Jul/2013 01:00	2	9560.0	75	1.60	N/A	N/A	206	0.60	N/A	N/A
29/Jul/2013 13:10	2	10611.0	75	1.56	N/A	N/A	217	0.56	N/A	N/A
30/Jul/2013 00:15	2	11793.0	74	1.57	N/A	N/A	225	0.53	N/A	N/A

Mnemonics

Curve	Description	Units
GRAX	Gamma Ray – Apparent, 0.5 ft. Avg	API
ROPA	Rate of Penetration, 3.0 ft. Avg	ft/hr
TCDX	Downhole Temperature	degF
WOBA	Weight on Bit, 1.0 ft. Avg	Klbs

Equipment and Service Data

LWD Run No.	Tool	Serial Number	Measurement	Bit Offset (ft.)	Max O.D. (in.)	Min I.D. (in.)
2	DIR	12422312	Directional	56.93	6.750	3.250
2	SRIG	12606956	Gamma	53.51	6.750	3.250
3	CS	10623618	-	75.30	5.000	1.750
3	BCPM	10167370	Telemetry	64.21	5.000	1.750
3	STAB	11826085	-	61.09	5.625	1.750
3	OTK	12891650	Directional	55.21	5.066	1.750

3	OTK	12891650	Resistivity	49.24	7.031	2.165
3	OTK	12891650	Gamma	42.05	5.066	1.750
3	OTK	12891650	Pressure	44.68	5.066	1.750
3	CS	12161723	-	36.77	5.000	1.750

Service and Tool Mnemonics


Mnemonic	Name	Description
BCPM	BCPM	Mud pulse telemetry and downhole tool power module
DIR	Directional	Wellbore directional survey
OTK	OnTrak	Propagation resistivity, propagation conductivity, gamma ray, directional, annular pressure, system memory and VSS
SRIG	Inclination and Gamma	Probe based gamma ray and inclination module
STAB	Stabilizer	Stabilizer assembly
CS	Closure Sub	BHA power ring isolator allowing insertion of inert sub into electrically powered BHA

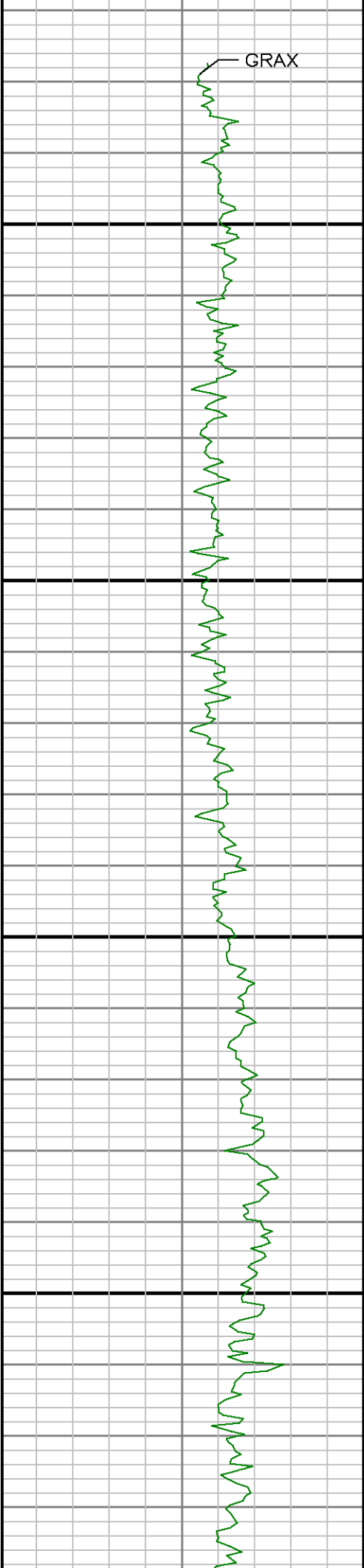
Comments

(1)	Baker Hughes LWD run 1 utilized 6 3/4 inch NaviGamma services (Gamma Ray and Directional) behind an 8 3/4 inch bit and steerable assembly from 1026 to 7953 feet MD (1026 to 7535 feet TVD).
(2)	Baker Hughes LWD run 2 utilized 4 3/4 inch OnTrak services (Multiple Propagation Resistivity, Gamma Ray, and Directional) behind a 6 1/8 inch bit and steerable assembly from 7953 to 12075 feet MD (7535 to 7537 feet TVD).
(3)	A sliding indicator is shown to the right edged of track 2 as a heavy line. The indicator has been depth-shifted to the resistivity sensor offset to correspond with resistivity data acquired while sliding.

Remarks

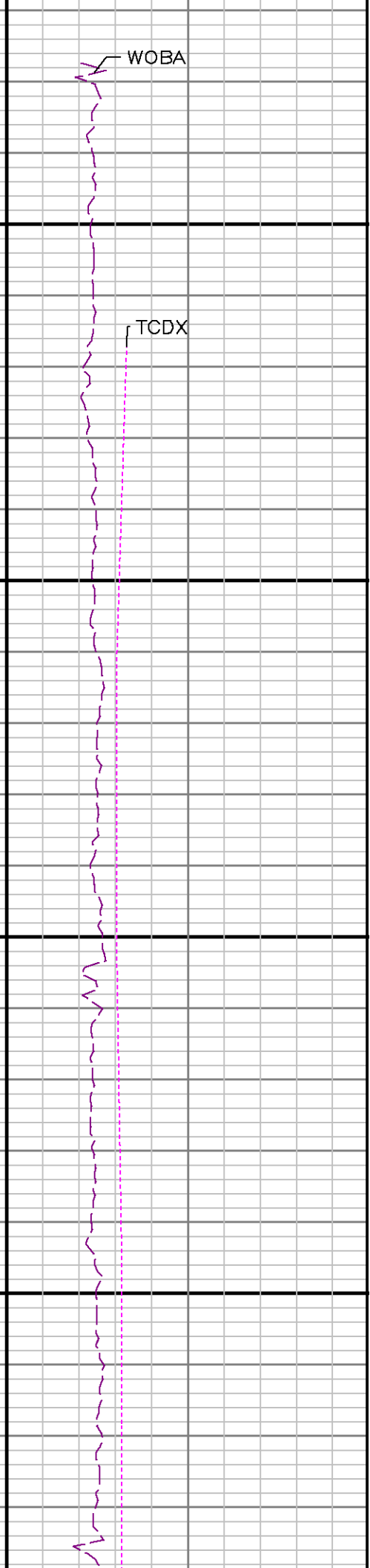
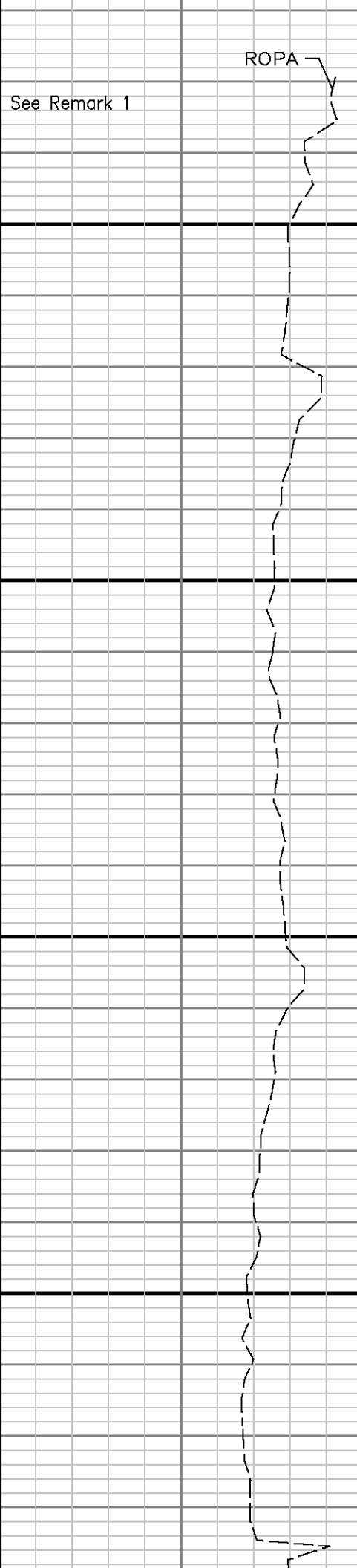
Number	Measured Depth (ft.)	Hole Section (in.)	LWD Run No.	Remark
1	7000	8.750	1	Began logging gamma ray on the first slide of the build section at 7000 feet MD (6927 feet TVD)
2	7900	8.750	2	The interval from 7899 to 7953 feet MD (7531 to 7535 feet TVD) was logged more than 10 hours after being drilled due to a trip out of the hole for casing and cement operations, and to pickup the lateral assembly.
3	12030	6.125	2	The interval from 12027 to 12075 feet MD (7537 feet TVD) was not logged up due to sensors offsets to bit at TD.

		Company : Kerr-McGee Oil & Gas Onshore LP Well : Gobbler 34C-23HZ Interval : 6910.00 - 7550.00 feet Created : 26/Jul/2013 8:41:03 PM	
Gamma Ray Apparent 0.5 ft Avg GRAX	TVD feet 1:240	Rate of Penetration 3.0 ft Avg ROPA	Surface Weight On Bit 1.0 ft Avg WOBA
0 200		500 0	0 100
API		ft/hr	klbf
			Downhole Temperature TCDX
			100 300
			degF



7000

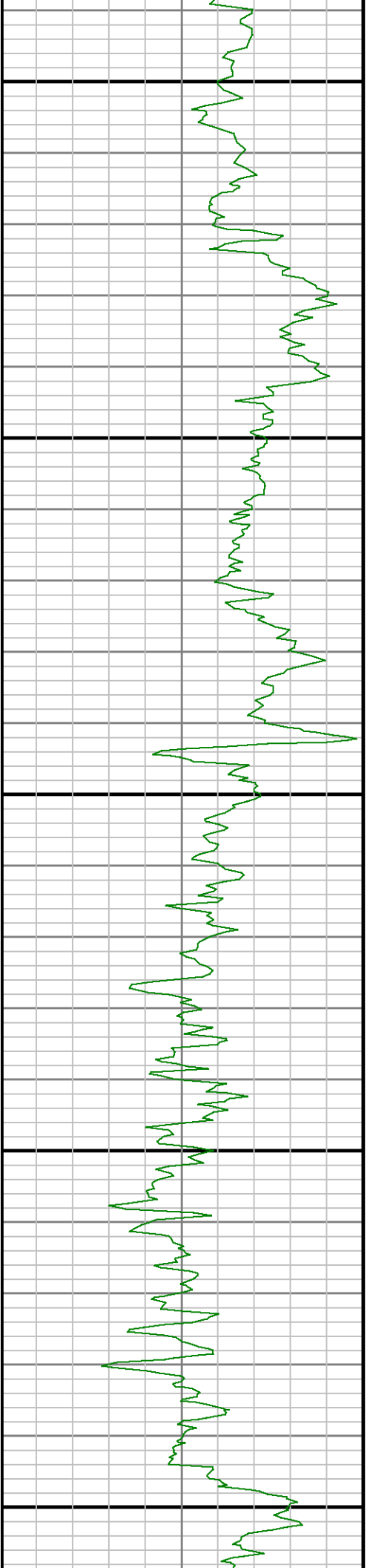
7100

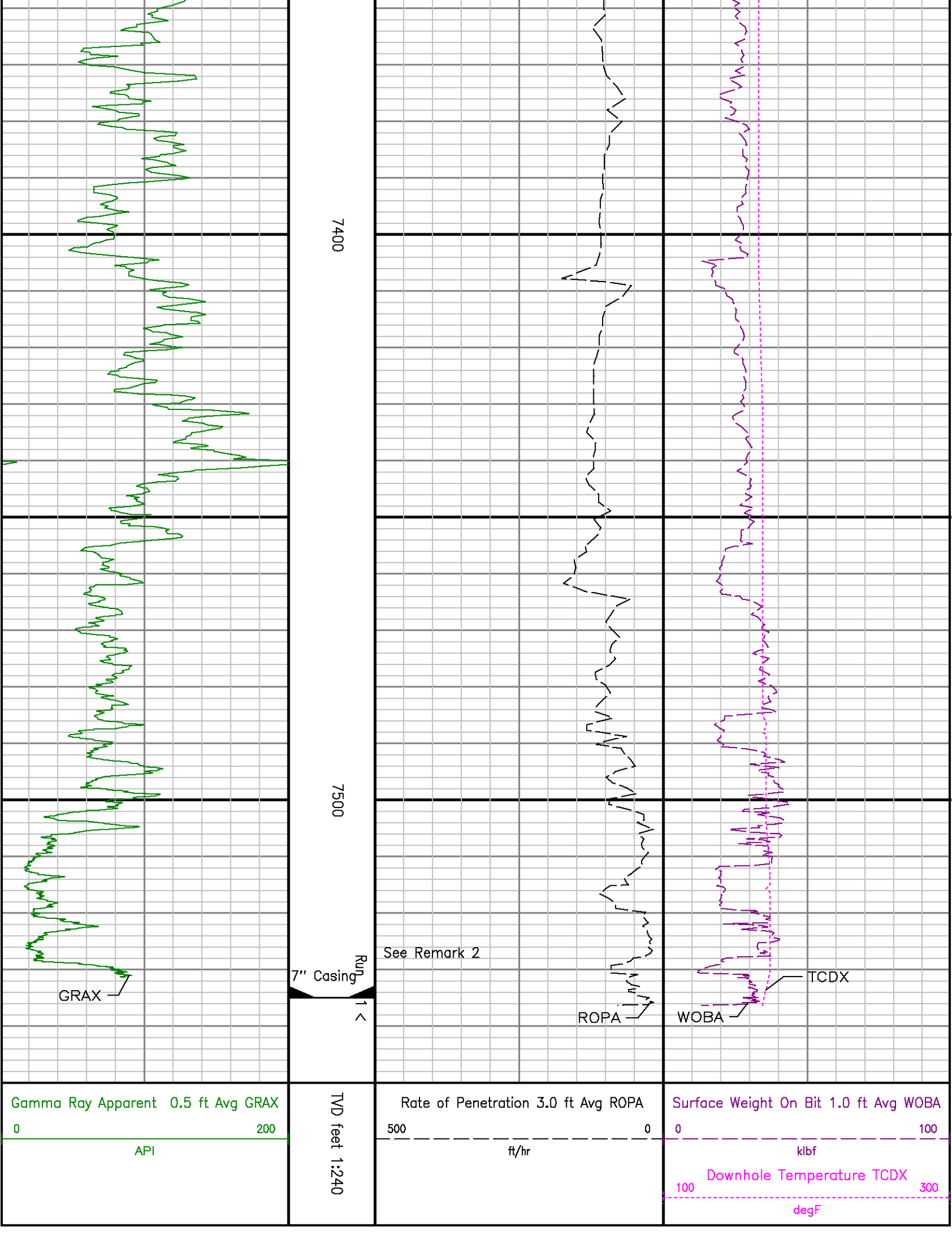




7200

7300





ADVANTAGE Final Survey Listing

Operator	: Kerr-McGee Oil & Gas Onshore LP	Field	: Wattenburg	API No	:
Well	: Gobbler 34C-23HZ	Rig	: Xtreme 20	Job	: 5587288
Wellbore	: Gobbler 34C-23HZ Orig Hole				

Operator	: Kerr-McGee Oil & Gas Onshore LP	Field	: Wattenburg	API No	:
Well	: Gobbler 34C-23HZ	Rig	: Xtreme 20	Job	: 5587288
Wellbore	: Gobbler 34C-23HZ Orig Hole				

Well Origin

Latitude	40.13 deg	Longitude	-104.75 deg
North Reference	True	Drill Depth Zero	NULL
Vertical Datum is	Mean Sea Level	Vertical Datum to DDZ	5100.00 ft
Vertical Section North	0.00 ft	Vertical Section East	0.00 ft
Vertical Section Azimuth	180.36 deg	Vertical Section Depth	0.00ft
Grid Convergence	0.00 deg	Magnetic Declination	8.44 deg
Total Correction	8.44 deg	TVD Calculation Method	Minimal Curvature
D-Raw Calculation	Magcorr1	Local Magnetic Field	52987 nT
Local Magnetic Dip Angle	66.93 deg	Local Gravity Field	9.801 m/s^2

Tie	MD ft	Incl deg	Azim deg	North ft	East ft	TVD ft	VS ft	Incr VS ft	Crs Len ft	DLS deg/100ft	Build deg/100ft	Turn deg/100ft
-----	----------	-------------	-------------	-------------	------------	-----------	----------	---------------	---------------	------------------	--------------------	-------------------

	0.00	0.00	0.00	0.00	0.00	0.00	0.00					
U	948.00	0.11	213.50	0.91	-0.54	945.99	-0.91		948.00			
	1066.00	0.44	233.49	0.54	-0.97	1065.99	-0.53	0.57	120.00	0.28	0.28	16.66
	1180.00	0.33	218.18	0.11	-1.43	1159.99	-0.10	1.20	94.00	0.16	-0.12	-16.29
	1251.00	0.24	293.88	-0.02	-1.77	1250.99	0.03	1.56	91.00	0.39	-0.10	83.19
	1342.00	1.86	35.95	1.25	-1.08	1341.97	-1.24	3.01	91.00	2.11	1.78	112.16
	1434.00	3.04	34.46	4.47	1.17	1433.88	-4.48	6.94	92.00	1.29	1.28	-1.62
	1525.00	4.82	45.51	9.14	5.27	1524.67	-9.17	13.15	91.00	2.12	1.96	12.14
	1617.00	6.52	40.88	15.80	11.44	1616.21	-15.87	22.23	92.00	1.91	1.85	-5.03
	1708.00	8.18	39.60	24.69	18.95	1706.46	-24.81	33.87	91.00	1.83	1.82	-1.41

1799.00	9.98	40.17	35.71	28.17	1796.32	-35.88	48.23	91.00	1.98	1.98	0.63
1891.00	11.16	34.19	49.16	38.31	1886.76	-49.40	65.09	92.00	1.75	1.28	-6.50
1982.00	12.35	30.54	64.83	48.21	1975.85	-65.13	83.62	91.00	1.54	1.31	-4.01
2073.00	13.52	30.40	82.39	58.54	2064.54	-82.75	103.99	91.00	1.29	1.29	-0.15
2165.00	14.85	31.35	101.73	70.11	2153.73	-102.17	126.53	92.00	1.47	1.45	1.03
2256.00	15.80	32.94	122.09	82.91	2241.50	-122.61	150.58	91.00	1.14	1.04	1.75
2348.00	16.26	32.64	143.45	96.67	2329.92	-144.05	175.98	92.00	0.51	0.50	-0.33
2440.00	15.10	32.00	164.46	109.97	2418.49	-165.14	200.85	92.00	1.27	-1.26	-0.70
2530.00	15.37	33.79	184.31	122.82	2505.33	-185.08	224.49	90.00	0.60	0.30	1.99
2621.00	15.87	37.21	204.24	137.05	2592.97	-205.10	248.99	91.00	1.15	0.55	3.76

2712.00	15.97	39.03	223.88	152.45	2680.48	-224.83	273.94	91.00	0.56	0.11	2.00
2804.00	16.16	34.95	244.20	167.76	2768.89	-245.25	299.39	92.00	1.24	0.21	-4.43
2896.00	16.38	36.89	265.07	182.88	2857.21	-266.21	325.16	92.00	0.64	0.24	2.11
2981.00	16.39	38.63	284.03	197.56	2938.76	-285.26	349.13	85.00	0.58	0.01	2.05
3066.00	16.82	35.77	303.37	212.24	3020.21	-304.70	373.42	85.00	1.09	0.51	-3.36
3151.00	17.34	35.61	323.65	226.80	3101.47	-325.07	398.38	85.00	0.61	0.61	-0.19
3236.00	16.43	34.65	343.84	241.01	3182.80	-345.34	423.07	85.00	1.12	-1.07	-1.13
3321.00	15.68	32.77	363.38	254.06	3264.48	-364.97	446.57	85.00	1.07	-0.88	-2.21
3407.00	16.09	33.91	383.05	267.00	3347.20	-384.72	470.11	86.00	0.60	0.48	1.33
3492.00	14.24	35.52	401.33	279.65	3429.24	-403.08	492.34	85.00	2.23	-2.18	1.89

3577.00	13.15	32.13	418.03	290.87	3511.82	-419.85	512.46	85.00	1.59	-1.28	-3.99
3682.00	11.59	36.60	433.07	301.10	3594.85	-434.96	530.85	85.00	2.15	-1.84	5.26
3747.00	9.85	35.99	445.81	310.46	3678.36	-447.75	546.46	85.00	2.05	-2.05	-0.72
3832.00	8.07	32.70	456.72	317.96	3762.32	-458.71	559.70	85.00	2.18	-2.09	-3.87
3917.00	7.37	41.21	465.84	324.78	3846.55	-467.87	571.08	85.00	1.57	-0.82	10.01
4002.00	5.98	38.20	473.42	331.11	3930.97	-475.49	580.96	85.00	1.69	-1.64	-3.54
4088.00	6.37	42.41	480.46	337.09	4016.48	-482.57	590.21	86.00	0.69	0.45	4.90
4173.00	5.40	35.57	487.20	342.60	4101.03	-489.34	598.90	85.00	1.41	-1.14	-8.05
4258.00	4.07	19.55	493.29	345.94	4185.74	-495.46	605.85	85.00	2.19	-1.56	-18.85
4343.00	2.54	38.81	497.61	348.13	4270.60	-499.78	610.69	85.00	2.20	-1.80	22.66

4428.00	1.32	31.91	499.90	349.83	4355.55	-502.09	613.55	85.00	1.46	-1.44	-8.12
4513.00	0.48	292.88	500.87	350.01	4440.54	-503.06	614.54	85.00	1.73	-0.99	-116.51
4599.00	1.02	271.71	501.04	348.92	4526.53	-503.22	615.84	86.00	0.70	0.63	-24.62
4684.00	0.53	321.10	501.38	347.91	4611.53	-503.54	616.70	85.00	0.92	-0.58	58.11
4769.00	0.69	302.43	501.95	347.24	4696.52	-504.12	617.59	85.00	0.30	0.19	-21.96
4854.00	0.91	225.26	501.74	346.32	4781.51	-503.91	618.53	85.00	1.19	0.26	-90.79
4939.00	1.54	243.38	500.76	344.82	4866.49	-502.91	620.32	85.00	0.86	0.74	21.32
5024.00	0.99	247.22	499.96	343.13	4951.47	-502.11	622.20	85.00	0.65	-0.65	4.52
5110.00	0.99	95.83	499.60	343.18	5037.47	-501.74	622.57	86.00	2.23	0.00	-178.03
5195.00	1.88	97.26	499.35	345.29	5122.44	-501.51	624.69	85.00	1.05	1.05	1.68

Tie	MD ft	Incl deg	Azim deg	North ft	East ft	TVD ft	VS ft	Incr VS ft	Crs Len ft	DLS deg/100ft	Build deg/100ft	Turn deg/100ft
	5280.00	0.37	65.77	499.28	346.93	5207.42	-501.45	626.33	85.00	1.85	-1.78	-37.05
	5365.00	0.41	35.54	499.64	347.35	5292.42	-501.82	626.89	85.00	0.24	0.05	-35.56
	5451.00	0.53	49.63	500.15	347.84	5378.42	-502.33	627.59	86.00	0.19	0.14	16.38
	5536.00	0.68	44.82	500.76	348.49	5463.41	-502.94	628.48	85.00	0.19	0.18	-5.66
	5621.00	0.80	36.16	501.60	349.20	5548.41	-503.79	629.58	85.00	0.19	0.14	-10.19
	5706.00	0.97	29.34	502.71	349.90	5633.40	-504.90	630.89	85.00	0.23	0.20	-8.02
	5792.00	0.15	50.92	503.41	350.34	5719.39	-505.60	631.72	86.00	0.97	-0.95	25.09
	5877.00	0.36	30.38	503.71	350.56	5804.39	-505.91	632.10	85.00	0.27	0.25	-24.16
	5962.00	0.50	8.40	504.31	350.75	5889.39	-506.50	632.72	85.00	0.25	0.16	-25.86
	6047.00	0.85	353.02	505.30	350.73	5974.38	-507.50	633.72	85.00	0.46	0.41	-18.09
	6132.00	0.48	52.68	506.15	350.94	6059.38	-508.34	634.58	85.00	0.87	-0.44	70.19
	6217.00	0.73	27.23	506.84	351.47	6144.37	-509.04	635.46	85.00	0.43	0.29	-29.94
	6303.00	1.40	345.44	508.35	351.46	6230.36	-510.55	636.98	86.00	1.14	0.78	-48.59
	6388.00	0.45	250.06	509.24	350.88	6315.35	-511.43	638.02	85.00	1.78	-1.12	-112.21
	6473.00	0.17	231.92	509.05	350.47	6400.35	-511.24	638.48	85.00	0.35	-0.33	-21.34
	6558.00	0.34	189.89	508.72	350.32	6485.35	-510.91	638.83	85.00	0.28	0.20	-49.45
	6644.00	0.32	195.27	508.24	350.22	6571.35	-510.43	639.33	86.00	0.04	-0.02	6.26
	6729.00	0.25	206.36	507.84	350.07	6656.34	-510.03	639.75	85.00	0.10	-0.08	13.05
	6814.00	0.22	178.25	507.51	350.00	6741.34	-509.70	640.09	85.00	0.14	-0.04	-33.07
	6899.00	0.18	212.51	507.24	349.93	6826.34	-509.43	640.37	85.00	0.15	-0.05	40.31
	6985.00	0.43	221.74	506.88	349.64	6912.34	-509.07	640.83	86.00	0.30	0.29	10.73
	7070.00	3.15	182.60	505.61	349.48	6994.32	-507.80	642.11	42.00	6.74	6.48	-93.19
	7070.00	6.66	169.78	501.98	349.87	6997.16	-504.16	645.76	43.00	8.50	8.16	-29.81
	7112.00	11.43	171.79	495.46	350.90	7038.62	-497.65	652.36	42.00	11.38	11.36	4.79
	7155.00	15.35	172.85	485.59	352.22	7080.44	-487.79	662.32	43.00	9.13	9.12	2.47
	7197.00	19.52	175.10	473.06	353.51	7120.51	-475.29	674.90	42.00	10.06	9.93	5.36
	7240.00	23.75	176.52	457.27	354.65	7160.47	-459.49	690.75	43.00	9.91	9.84	3.30
	7282.00	27.56	179.30	439.10	355.28	7198.32	-441.33	708.92	42.00	9.51	9.07	6.62
	7325.00	30.80	179.63	418.14	355.47	7235.66	-420.37	729.89	43.00	7.54	7.53	0.77
	7367.00	33.44	178.30	395.82	355.89	7271.43	-398.05	752.21	42.00	6.51	6.29	-3.17
	7410.00	36.55	180.44	371.16	356.14	7306.65	-373.40	776.87	43.00	7.77	7.23	4.96
	7453.00	41.49	181.08	344.10	355.77	7340.05	-346.33	803.93	43.00	11.53	11.49	1.49
	7496.00	45.98	181.37	314.39	355.13	7371.11	-318.62	833.65	43.00	10.45	10.44	0.67
	7538.00	50.56	181.81	283.07	354.26	7399.06	-285.29	864.99	42.00	10.93	10.90	1.05
	7581.00	55.29	182.29	248.79	353.03	7424.98	-251.01	899.29	43.00	11.04	11.00	1.12
	7623.00	60.29	182.57	213.30	351.52	7447.36	-215.50	934.81	42.00	11.92	11.90	0.67
	7666.00	63.46	182.63	175.42	349.80	7467.62	-177.62	972.73	43.00	7.37	7.37	0.14
	7708.00	66.25	182.41	137.14	348.12	7484.80	-139.33	1011.04	42.00	11.41	11.40	-0.52
	7751.00	71.76	180.53	96.76	347.09	7499.50	-98.94	1051.44	43.00	9.14	8.16	-4.37
	7794.00	75.64	179.37	55.49	347.13	7511.57	-57.67	1092.70	43.00	9.39	9.02	-2.70
	7837.00	78.22	179.63	13.61	347.49	7521.29	-15.80	1134.59	43.00	6.03	6.00	0.60
	7879.00	81.77	180.11	-27.74	347.59	7528.59	25.56	1175.94	42.00	6.53	6.45	1.14
	7895.00	82.71	180.43	-43.59	347.51	7530.75	41.41	1191.79	16.00	6.20	5.87	2.00
	7953.00	87.65	180.12	-101.37	347.23	7535.62	99.19	1249.57	58.00	6.53	6.52	-0.53
	8024.00	88.43	180.50	-172.33	346.85	7538.05	170.14	1320.53	71.00	1.22	1.10	0.54
	8097.00	89.36	180.35	-245.31	346.31	7539.44	243.13	1393.52	73.00	1.32	1.30	-0.21
	8171.00	90.46	180.74	-319.31	345.61	7539.54	317.13	1467.51	74.00	1.55	1.46	0.53
	8256.00	90.95	180.15	-404.30	344.95	7538.50	402.12	1552.51	85.00	0.90	0.58	-0.69
	8342.00	91.44	180.93	-490.27	344.14	7536.71	486.10	1636.49	86.00	1.07	0.57	0.91
	8427.00	91.50	180.84	-575.24	342.82	7534.52	573.07	1723.46	85.00	0.13	0.07	-0.11

Tie	MD	Incl	Azim	North	East	TVD	VS	Incr VS	Crs Len	DLS	Build	Turn
-----	----	------	------	-------	------	-----	----	---------	---------	-----	-------	------

ft	deg	deg	ft	ft	ft	ft	ft	ft	deg/100ft	deg/100ft	deg/100ft
8512.00	91.18	180.87	-680.20	341.55	7532.55	658.04	1808.44	85.00	0.40	-0.40	0.04
8597.00	91.11	180.85	-745.18	340.28	7530.87	743.02	1893.42	85.00	0.06	-0.06	-0.02
8682.00	90.77	179.24	-830.18	340.21	7529.47	828.01	1978.41	85.00	1.94	-0.40	-1.89
8787.00	89.07	179.30	-915.15	341.30	7529.59	912.99	2063.40	85.00	2.00	-2.00	0.07
8852.00	89.48	179.66	-1000.14	342.07	7530.67	997.97	2148.40	85.00	0.64	0.48	0.42
8938.00	87.91	177.90	-1086.09	343.90	7532.83	1083.91	2234.37	86.00	2.74	-1.83	-2.05
9023.00	87.75	178.87	-1171.00	346.29	7535.84	1168.80	2319.30	85.00	1.16	-0.19	1.14
9108.00	89.01	179.89	-1255.98	347.21	7538.25	1253.75	2404.27	85.00	1.91	1.48	1.20
9193.00	88.88	179.27	-1340.94	347.83	7539.96	1338.72	2489.25	85.00	0.83	-0.39	-0.73
9278.00	90.09	179.62	-1425.92	348.66	7540.87	1423.71	2574.24	85.00	1.71	1.66	0.41
9363.00	91.17	180.59	-1510.92	348.50	7539.94	1508.70	2659.24	85.00	1.71	1.27	1.14
9448.00	91.51	181.16	-1595.88	347.20	7537.95	1593.67	2744.21	85.00	0.78	0.40	0.67
9533.00	91.78	180.58	-1680.84	345.91	7535.53	1678.63	2829.18	85.00	0.74	0.29	-0.88
9618.00	90.80	180.35	-1765.81	345.22	7533.83	1763.61	2914.15	85.00	1.18	-1.13	-0.27
9703.00	91.17	180.30	-1850.80	344.74	7532.17	1848.60	2999.14	85.00	0.44	0.44	-0.06
9788.00	89.75	180.47	-1935.79	344.17	7531.48	1933.59	3084.14	85.00	1.68	-1.67	0.20
9873.00	89.45	180.61	-2020.79	343.37	7532.08	2018.59	3169.13	85.00	0.39	-0.35	0.16
9958.00	89.22	180.65	-2105.78	342.43	7533.06	2103.58	3254.13	85.00	0.27	-0.27	0.05
10044.00	90.27	180.15	-2191.77	341.83	7533.45	2189.58	3340.13	86.00	1.35	1.22	-0.58
10129.00	90.40	180.75	-2276.77	341.17	7532.95	2274.58	3425.12	85.00	0.72	0.15	0.71
10214.00	89.53	179.97	-2361.76	340.63	7533.00	2359.58	3510.12	85.00	1.37	-1.02	-0.92
10299.00	89.25	179.95	-2446.76	340.69	7533.91	2444.57	3595.12	85.00	0.33	-0.33	-0.02
10384.00	89.96	180.84	-2531.75	340.11	7534.49	2529.57	3680.11	85.00	1.34	0.84	1.05
10470.00	90.55	180.36	-2617.75	339.20	7534.11	2615.56	3766.11	86.00	0.88	0.69	-0.56
10555.00	91.38	180.74	-2702.73	338.39	7532.68	2700.55	3851.10	85.00	1.07	0.98	0.45
10640.00	91.10	180.58	-2787.70	337.41	7530.84	2785.53	3936.08	85.00	0.38	-0.33	-0.19
10725.00	90.46	179.93	-2872.70	337.03	7529.68	2870.52	4021.07	85.00	1.07	-0.75	-0.76
10811.00	88.02	178.53	-2958.87	338.19	7530.82	2956.49	4107.06	86.00	3.27	-2.84	-1.83
10896.00	87.83	177.98	-3043.58	340.77	7533.90	3041.37	4192.00	85.00	0.68	-0.22	-0.66
10981.00	88.43	180.00	-3128.51	342.27	7536.67	3126.30	4276.95	85.00	2.48	0.71	2.38
11066.00	89.29	181.13	-3213.49	341.43	7538.36	3211.28	4361.93	85.00	1.67	1.01	1.33
11151.00	90.03	181.80	-3298.46	339.26	7538.87	3296.26	4446.93	85.00	1.17	0.87	0.79
11236.00	90.56	181.47	-3383.42	336.83	7538.43	3381.24	4531.93	85.00	0.73	0.62	-0.39
11321.00	90.12	181.63	-3468.39	334.54	7537.93	3466.22	4616.92	85.00	0.55	-0.52	0.19
11406.00	89.41	181.33	-3553.36	332.34	7538.28	3551.20	4701.92	85.00	0.91	-0.64	-0.35
11492.00	89.82	181.10	-3639.34	330.52	7538.85	3637.19	4787.92	86.00	0.55	0.48	-0.27
11577.00	90.59	181.08	-3724.32	328.90	7538.55	3722.18	4872.92	85.00	0.91	0.91	-0.02
11662.00	90.53	181.81	-3809.29	326.76	7537.72	3807.16	4957.91	85.00	0.86	-0.07	0.88
11747.00	89.57	180.87	-3894.27	324.77	7537.64	3892.15	5042.91	85.00	1.58	-1.13	-1.11
11833.00	90.49	180.29	-3980.26	323.90	7537.60	3978.15	5128.91	86.00	1.26	1.07	-0.67
11918.00	90.46	179.85	-4065.26	323.79	7538.89	4063.14	5213.91	85.00	0.52	-0.04	-0.52
12018.00	89.57	179.04	-4165.25	324.76	7536.87	4163.13	5313.91	100.00	1.20	-0.89	-0.81
Projection to TD: 12075.00	89.57	179.04	-4222.24	325.72	7537.30	4220.11	5370.91	67.00	0.00	0.00	0.00