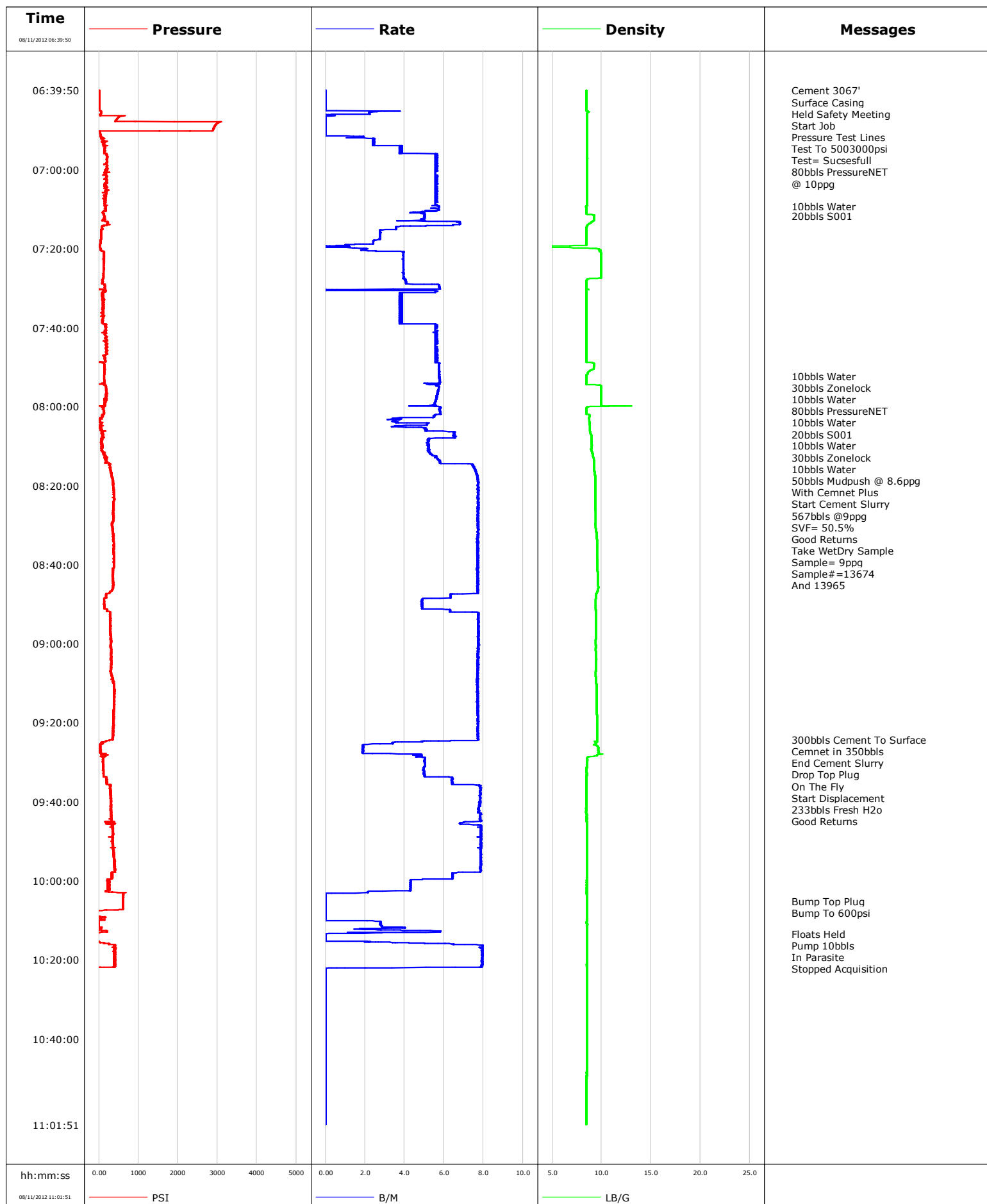


Well	SG 8502E-35	Client	ENCANA
Field	STORY GULCG	SIR No.	C610-00552
Engineer		Job Type	SURFACE
Country	United States	Job Date	08-11-2012





Cementing Service Report

				Customer ENCANA			Job Number C610-00552								
Well SG 8502E-35			Location (legal) N PARACHUTE			Schlumberger Location GCO			Job Start Aug/11/2012						
Field STORY GULCG		Formation Name/Type			Deviation		Bit Size		Well MD		Well TVD				
County GARFIELD		State/Province Colorado			BHP		BHST		BHCT		Pore Press. Gradient				
Well Master		API/UWI													
Rig Name PATTERSON 306		Drilled For Gas		Service Via Land		Casing/Liner									
Offshore Zone		Well Class New		Well Type Development		Depth, ft		Size, in		Weight, lb/ft		Grade		Thread	
						3067.0		9.630		36.0		J55		8RD	
Drilling Fluid Type		Max. Density		Plastic Viscosity		Tubing/Drill Pipe									
						Depth,		Size,		Weight,		Grade		Thread	
Service Line Cementing		Job Type SURFACE													
Max. Allowed Tub. Press		Max. Allowed Ann. Press		WH Connection		Perforations/Open Hole									
						Top,		Bottom,				No. of Shots		Total Interval	
Service Instructions 1136sks 9 ppq liteCRETE 2.80ft3/sk water test= good														Diameter	
						Treat Down Casing		Displacement 233.0 bbl		Packer Type		Packer Depth			
						Tubing Vol.		Casing Vol. 3.0 bbl		Annular Vol. 389.0 bbl		Openhole Vol. 644.0 bbl			
Casing/Tubing Secured <input checked="" type="checkbox"/>		1 Hole Vol. Circulated prior to Cement <input checked="" type="checkbox"/>		Casing Tools				Squeeze Job							
Lift Pressure				Shoe Type Guide				Squeeze Type							
Pipe Rotated <input type="checkbox"/>		Pipe Reciprocated <input type="checkbox"/>		Shoe Depth 3067.0 ft				Tool Type							
No. Centralizers		Top Plugs 1		Bottom Plugs		Stage Tool Type				Tool Depth					
Cement Head Type Single				Stage Tool Depth				Tail Pipe Size							
Job Scheduled For Aug/11/2012		Arrived on Location Aug/11/2012		Leave Location Aug/11/2012		Collar Type Diff-Fill				Tail Pipe Depth					
						Collar Depth 3020.0 ft				Sqz. Total Vol.					
Date	Time 24-hr clock	Treating Pressure PSI	Flow Rate B/M	Density LB/G	Volume BBL	Message									
08/11/2012	04:16:17					Started Acquisition									
08/11/2012	06:39:50					Cement 3067'									
08/11/2012	06:39:50					Surface Casing									
08/11/2012	06:39:50					Held Safety Meeting									
08/11/2012	06:39:50	2	0.0	8.45	0.0										
08/11/2012	06:39:52					Start Job									
08/11/2012	06:39:52	2	0.0	8.45	0.0										
08/11/2012	06:39:54					Pressure Test Lines									
08/11/2012	06:39:54					Test To 5003000psi									
08/11/2012	06:39:54					Test= Sucsesfull									
08/11/2012	06:39:54	2	0.0	8.45	0.0										
08/11/2012	06:40:17	2	0.0	8.45	0.0										
08/11/2012	06:42:17	2	0.0	8.45	0.0										
08/11/2012	06:44:17	8	0.0	8.45	0.0										
08/11/2012	06:46:17	39	0.0	8.50	2.0										
08/11/2012	06:48:17	2987	0.0	8.50	2.0										
08/11/2012	06:50:17	14	0.0	8.50	2.0										
08/11/2012	06:52:17	86	2.5	8.51	3.7										
08/11/2012	06:53:33					80bbbs PressureNET									
08/11/2012	06:53:33					@ 10ppg									
08/11/2012	06:53:33	124	2.5	8.51	6.7										

Well			Field		Job Start	Customer		Job Number
SG 8502E-35			STORY GULCG		Aug/11/2012	ENCANA		C610-00552
Date	Time 24-hr clock	Treating Pressure PSI	Flow Rate B/M	Density LB/G	Volume BBL	Message		
08/11/2012	06:56:17	198	5.6	8.51	17.4			
08/11/2012	06:58:17	200	5.6	8.52	28.5			
08/11/2012	07:00:17	204	5.7	8.51	39.7			
08/11/2012	07:02:17	152	5.6	8.51	50.8			
08/11/2012	07:04:17	186	5.7	8.51	62.0			
08/11/2012	07:06:17	176	5.6	8.51	73.1			
08/11/2012	07:08:17	171	5.7	8.50	84.2			
08/11/2012	07:09:14					10bbls Water		
08/11/2012	07:09:14	152	5.7	8.42	89.5			
08/11/2012	07:10:17	130	5.6	8.45	95.5			
08/11/2012	07:11:42					20bbls S001		
08/11/2012	07:11:42	149	5.0	9.24	102.5			
08/11/2012	07:12:17	123	5.0	9.23	105.4			
08/11/2012	07:14:17	88	4.3	8.49	117.1			
08/11/2012	07:16:17	54	2.8	8.46	123.4			
08/11/2012	07:18:17	48	2.4	8.46	128.8			
08/11/2012	07:20:17	43	1.9	9.83	131.6			
08/11/2012	07:22:17	130	3.9	9.94	138.8			
08/11/2012	07:24:17	116	3.9	9.94	146.7			
08/11/2012	07:26:17	121	3.9	9.94	154.5			
08/11/2012	07:28:17	101	4.1	8.46	162.5			
08/11/2012	07:30:17	-1	3.4	8.63	172.8			
08/11/2012	07:32:17	105	3.7	8.46	180.3			
08/11/2012	07:34:17	92	3.7	8.46	187.9			
08/11/2012	07:36:17	112	3.7	8.46	195.5			
08/11/2012	07:38:17	87	3.9	8.46	203.1			
08/11/2012	07:40:17	168	5.6	8.46	212.9			
08/11/2012	07:42:17	198	5.6	8.46	224.1			
08/11/2012	07:44:17	169	5.6	8.46	235.2			
08/11/2012	07:46:17	190	5.6	8.46	246.4			
08/11/2012	07:48:17	155	5.6	8.46	257.5			
08/11/2012	07:50:17	147	5.7	9.21	268.9			
08/11/2012	07:52:12					10bbls Water		
08/11/2012	07:52:12					30bbls Zonelock		
08/11/2012	07:52:12					10bbls Water		
08/11/2012	07:52:12					80bbls PressureNET		
08/11/2012	07:52:12	133	5.7	8.46	279.9			
08/11/2012	07:52:13					10bbls Water		
08/11/2012	07:52:13	133	5.8	8.46	280.0			
08/11/2012	07:52:17	130	5.8	8.46	280.4			
08/11/2012	07:53:13					20bbls S001		
08/11/2012	07:53:13					10bbls Water		
08/11/2012	07:53:13	132	5.8	8.46	285.8			
08/11/2012	07:53:14					30bbls Zonelock		
08/11/2012	07:53:14					10bbls Water		
08/11/2012	07:53:14	136	5.8	8.46	285.8			
08/11/2012	07:54:17	134	5.8	8.46	291.8			
08/11/2012	07:56:17	193	5.7	9.94	303.2			
08/11/2012	07:58:17	177	5.6	9.94	314.5			
08/11/2012	08:00:17	118	5.8	8.50	325.6			
08/11/2012	08:02:17	97	5.5	8.78	337.1			
08/11/2012	08:04:17	73	5.1	8.78	345.4			
08/11/2012	08:06:17	101	6.2	8.82	354.9			
08/11/2012	08:08:01					50bbls Mudpush @ 8.6ppg		

Well			Field		Job Start	Customer		Job Number
SG 8502E-35			STORY GULCG		Aug/11/2012	ENCANA		C610-00552
Date	Time 24-hr clock	Treating Pressure PSI	Flow Rate B/M	Density LB/G	Volume BBL	Message		
08/11/2012	08:08:01	86	5.3	8.94	366.1			
08/11/2012	08:08:17	60	5.2	8.96	367.5			
08/11/2012	08:10:17	83	5.2	9.02	377.9			
08/11/2012	08:12:17	134	5.4	9.10	388.4			
08/11/2012	08:13:23					Start Cement Slurry		
08/11/2012	08:13:23	175	5.7	9.18	394.6			
08/11/2012	08:13:25					567bbls @9ppg		
08/11/2012	08:13:25					SVF= 50.5%		
08/11/2012	08:13:25					Good Returns		
08/11/2012	08:13:25					Take WetDry Sample		
08/11/2012	08:13:25					Sample= 9ppg		
08/11/2012	08:13:25	195	5.7	9.19	394.8			
08/11/2012	08:13:26					Sample#=13674		
08/11/2012	08:13:26					And 13965		
08/11/2012	08:13:26	198	5.7	9.19	394.9			
08/11/2012	08:14:17	209	5.8	9.24	399.8			
08/11/2012	08:16:17	306	7.6	9.26	414.6			
08/11/2012	08:18:17	349	7.7	9.33	429.9			
08/11/2012	08:20:17	377	7.7	9.34	445.3			
08/11/2012	08:22:17	378	7.7	9.34	460.7			
08/11/2012	08:24:17	367	7.8	9.35	476.2			
08/11/2012	08:26:17	371	7.7	9.37	491.6			
08/11/2012	08:28:17	364	7.7	9.37	507.0			
08/11/2012	08:30:17	339	7.7	9.39	522.5			
08/11/2012	08:32:17	368	7.7	9.48	537.9			
08/11/2012	08:34:17	368	7.7	9.52	553.3			
08/11/2012	08:36:17	366	7.7	9.52	568.7			
08/11/2012	08:38:17	384	7.7	9.55	584.1			
08/11/2012	08:40:17	372	7.7	9.58	599.5			
08/11/2012	08:42:17	362	7.7	9.62	614.9			
08/11/2012	08:44:17	358	7.7	9.63	630.3			
08/11/2012	08:46:17	349	7.7	9.64	645.7			
08/11/2012	08:48:17	181	6.3	9.42	659.9			
08/11/2012	08:50:17	141	4.9	9.41	670.1			
08/11/2012	08:52:17	289	7.7	9.42	681.6			
08/11/2012	08:54:17	292	7.8	9.44	697.1			
08/11/2012	08:56:17	283	7.7	9.44	712.6			
08/11/2012	08:58:17	302	7.7	9.42	728.0			
08/11/2012	09:00:17	303	7.7	9.41	743.5			
08/11/2012	09:02:17	314	7.7	9.42	758.9			
08/11/2012	09:04:17	316	7.7	9.44	774.4			
08/11/2012	09:06:17	296	7.7	9.46	789.8			
08/11/2012	09:08:17	326	7.7	9.41	805.2			
08/11/2012	09:10:17	381	7.7	9.46	820.5			
08/11/2012	09:12:17	388	7.7	9.47	835.9			
08/11/2012	09:14:17	389	7.7	9.47	851.3			
08/11/2012	09:16:17	389	7.7	9.49	866.7			
08/11/2012	09:18:17	375	7.7	9.51	882.1			
08/11/2012	09:20:17	378	7.7	9.53	897.5			
08/11/2012	09:22:17	366	7.7	9.52	912.9			
08/11/2012	09:24:16					300bbls Cement To Surface		
08/11/2012	09:24:16	348	7.7	9.54	928.2			
08/11/2012	09:24:17					Cemnet in 350bbls		
08/11/2012	09:24:17	345	7.7	9.54	928.4			

Well			Field		Job Start	Customer	Job Number
SG 8502E-35			STORY GULCG		Aug/11/2012	ENCANA	C610-00552
Date	Time 24-hr clock	Treating Pressure PSI	Flow Rate B/M	Density LB/G	Volume BBL	Message	
08/11/2012	09:25:00	79	3.5	9.50	932.6		
08/11/2012	09:25:06					Drop Top Plug	
08/11/2012	09:25:06	115	3.4	9.53	933.0		
08/11/2012	09:25:07					On The Fly	
08/11/2012	09:25:07	78	3.4	9.51	933.0		
08/11/2012	09:26:17	30	1.9	9.70	935.7		
08/11/2012	09:28:17	153	4.4	9.52	940.6		
08/11/2012	09:30:17	104	5.0	8.49	950.5		
08/11/2012	09:30:42					Start Displacement	
08/11/2012	09:30:42	111	5.1	8.48	952.6		
08/11/2012	09:30:43					233bbls Fresh H2o	
08/11/2012	09:30:43	111	5.0	8.48	952.7		
08/11/2012	09:30:44					Good Returns	
08/11/2012	09:30:44	110	5.0	8.48	952.8		
08/11/2012	09:32:17	112	5.0	8.47	960.5		
08/11/2012	09:34:17	192	6.4	8.47	971.2		
08/11/2012	09:36:17	274	7.8	8.47	984.8		
08/11/2012	09:38:17	294	7.8	8.46	1000.4		
08/11/2012	09:40:17	306	7.8	8.45	1016.1		
08/11/2012	09:42:17	302	7.8	8.44	1031.6		
08/11/2012	09:44:17	315	7.8	8.48	1047.3		
08/11/2012	09:46:17	349	7.9	8.48	1062.3		
08/11/2012	09:48:17	364	7.9	8.48	1078.0		
08/11/2012	09:50:17	344	7.9	8.48	1093.7		
08/11/2012	09:52:17	371	7.9	8.48	1109.4		
08/11/2012	09:54:17	374	7.9	8.48	1125.1		
08/11/2012	09:56:17	399	7.8	8.48	1140.8		
08/11/2012	09:58:17	340	6.4	8.48	1156.1		
08/11/2012	10:00:17	258	4.3	8.48	1167.7		
08/11/2012	10:02:17	235	4.3	8.48	1176.3		
08/11/2012	10:04:17	612	0.0	8.48	1179.1		
08/11/2012	10:05:11					Bump Top Plug	
08/11/2012	10:05:11	612	0.0	8.48	1179.1		
08/11/2012	10:05:12					Bump To 600psi	
08/11/2012	10:05:12	612	0.0	8.48	1179.1		
08/11/2012	10:06:17	612	0.0	8.48	1179.1		
08/11/2012	10:08:17	-56	0.0	8.48	1179.1		
08/11/2012	10:10:17	-4	2.5	8.49	1179.3		
08/11/2012	10:12:17	-44	2.4	8.50	1185.2		
08/11/2012	10:13:30					Floats Held	
08/11/2012	10:13:30	-54	0.0	8.50	1189.4		
08/11/2012	10:13:43					Pump 10bbls	
08/11/2012	10:13:43					In Parasite	
08/11/2012	10:13:43	-55	0.0	8.50	1189.4		
08/11/2012	10:14:17	-54	0.0	8.50	1189.4		
08/11/2012	10:16:17	411	7.6	8.51	1193.3		
08/11/2012	10:18:17	392	7.9	8.49	1209.2		
08/11/2012	10:20:17	435	7.9	8.48	1225.1		
08/11/2012	10:22:17	-39	0.0	8.48	1239.3		
08/11/2012	10:24:17	-54	0.0	8.48	1239.3		
08/11/2012	10:26:17	-55	0.0	8.48	1239.3		
08/11/2012	10:28:17	-54	0.0	8.48	1239.3		
08/11/2012	10:30:17	-54	0.0	8.48	1239.3		
08/11/2012	10:32:17	-54	0.0	8.48	1239.3		

Well			Field		Job Start	Customer		Job Number
SG 8502E-35			STORY GULCG		Aug/11/2012	ENCANA		C610-00552
Date	Time 24-hr clock	Treating Pressure PSI	Flow Rate B/M	Density LB/G	Volume BBL	Message		
08/11/2012	10:36:17	-54	0.0	8.48	1239.3			
08/11/2012	10:38:17	-54	0.0	8.49	1239.3			
08/11/2012	10:40:17	-54	0.0	8.49	1239.3			
08/11/2012	10:42:17	-53	0.0	8.48	1239.3			
08/11/2012	10:44:17	-54	0.0	8.48	1239.3			
08/11/2012	10:46:17	-54	0.0	8.48	1239.3			
08/11/2012	10:48:17	-54	0.0	8.48	1239.3			
08/11/2012	10:50:17	-54	0.0	8.48	1239.3			
08/11/2012	10:52:17	-54	0.0	8.48	1239.3			
08/11/2012	10:54:17	-54	0.0	8.48	1239.3			
08/11/2012	10:56:17	-54	0.0	8.48	1239.3			
08/11/2012	10:58:17	-54	0.0	8.48	1239.3			
08/11/2012	11:00:17	-54	0.0	8.48	1239.3			

Post Job Summary

Average Pump Rates,					Volume of Fluid Injected,				
Slurry	N2		Mud	Maximum Rate	Total Slurry	Mud	Spacer	N2	
Treating Pressure Summary,					Breakdown Fluid				
Maximum	Final	Average	Bump Plug to	Breakdown	Type	Volume		Density	
Avg. N2 Percent		Designed Slurry Volume 567.0 bbl		Displacement	Mix Water Temp 64 degF	Cement Circulated to Surface? <input checked="" type="checkbox"/>		Volume	
						Washed Thru Perfs <input type="checkbox"/>		To	
Customer or Authorized Representative IRA COX			Schlumberger Supervisor JASON CRICK			Circulation Lost <input type="checkbox"/>		Job Completed <input checked="" type="checkbox"/>	
						-		-	