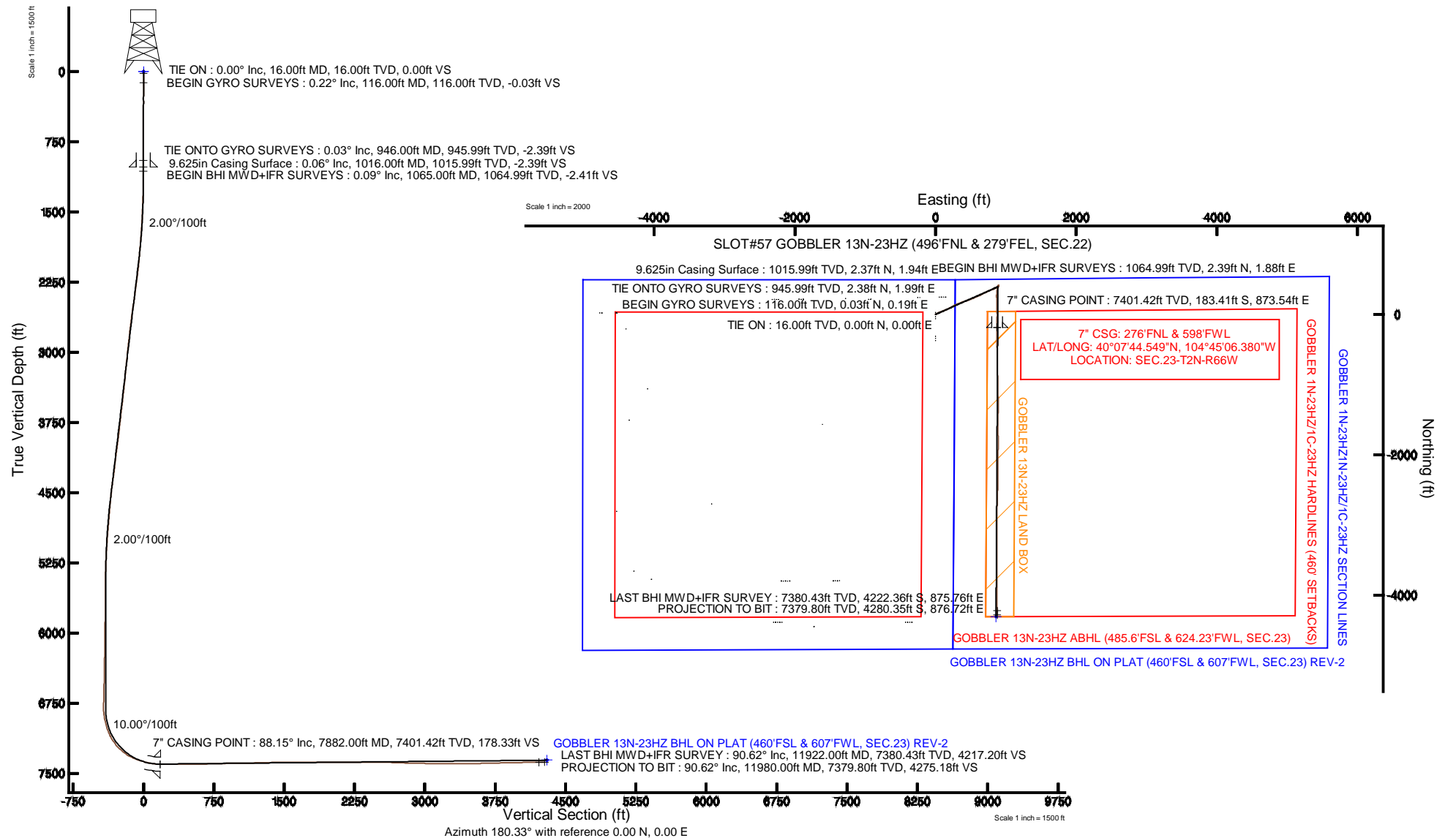


KERR-MCGEE OIL & GAS ONSHORE LP

Location:	COLORADO	Slot:	SLOT#57 GOBBLER 13N-23HZ (496'FNL & 279'FEL, SEC.22)
Field:	WELD COUNTY (KERR MCGEE)	Well:	GOBBLER 13N-23HZ
Facility:	SEC.22-T2N-R66W	Wellbore:	GOBBLER 13N-23HZ PWB

Plot reference wellpath is GOBBLER 13N-23HZ (REV-B.0) PWP

True vertical depths are referenced to XTREME 20 (16' KB) (RKB)	Grid System: NAD83 / Lambert Colorado SP, Northern Zone (501), US feet
Measured depths are referenced to XTREME 20 (16' KB) (RKB)	North Reference: True north
XTREME 20 (16' KB) (RKB) to Mean Sea Level 5100 feet	Scale: True distance
Mean Sea Level to Mud line (A Slot: SLOT#57 GOBBLER 13N-23HZ (406'FNL & 279'FEL, SEC.22)): 0 feet	Depths are in feet
Coordinates are in feet referenced to Slot	Created by: robale01 on 28/Aug/2013





Actual Wellpath Report

GOBBLER 13N-23HZ AWP

Page 1 of 7



REFERENCE WELLPATH IDENTIFICATION

Operator	KERR-MCGEE OIL & GAS ONSHORE LP	Slot	SLOT#57 GOBBLER 13N-23HZ (496'FNL & 279'FEL, SEC.22)
Area	COLORADO	Well	GOBBLER 13N-23HZ
Field	WELD COUNTY (KERR MCGEE)	Wellbore	GOBBLER 13N-23HZ AWP
Facility	SEC.22-T2N-R66W		

REPORT SETUP INFORMATION

Projection System	NAD83 / Lambert Colorado SP, Northern Zone (501), US feet	Software System	WellArchitect® 4.0.0
North Reference	True	User	Robiale01
Scale	0.999959	Report Generated	28/Aug/2013 at 12:57
Convergence at slot	n/a	Database/Source file	WA_ANADARKO/GOBBLER_13N-23HZ_AWP.xml

WELLPATH LOCATION

	Local coordinates		Grid coordinates		Geographic coordinates	
	North[ft]	East[ft]	Easting[US ft]	Northing[US ft]	Latitude	Longitude
Slot Location	-23.67	4543.73	3208344.56	1290912.35	40°07'46.362"N	104°45'17.626"W
Facility Reference Pt			3203800.98	1290898.68	40°07'46.600"N	104°46'16.122"W
Field Reference Pt			3197771.84	1268891.29	40°04'09.600"N	104°47'36.000"W

WELLPATH DATUM

Calculation method	Minimum curvature	XTREME 20 (16' KB) (RKB) to Facility Vertical Datum	5100.00ft
Horizontal Reference Pt	Slot	XTREME 20 (16' KB) (RKB) to Mean Sea Level	5100.00ft
Vertical Reference Pt	XTREME 20 (16' KB) (RKB)	XTREME 20 (16' KB) (RKB) to Mud Line at Slot (SLOT#57 GOBBLER 13N-23HZ (496'FNL & 279'FEL, SEC.22))	5100.00ft
MD Reference Pt	XTREME 20 (16' KB) (RKB)	Section Origin	N 0.00, E 0.00 ft
Field Vertical Reference	Mean Sea Level	Section Azimuth	180.33°



Actual Wellpath Report

GOBBLER 13N-23HZ AWP

Page 2 of 7



REFERENCE WELLPATH IDENTIFICATION

Operator	KERR-MCGEE OIL & GAS ONSHORE LP	Slot	SLOT#57 GOBBLER 13N-23HZ (496'FNL & 279'FEL, SEC.22)
Area	COLORADO	Well	GOBBLER 13N-23HZ
Field	WELD COUNTY (KERR MCGEE)	Wellbore	GOBBLER 13N-23HZ AWP
Facility	SEC.22-T2N-R66W		

WELLPATH DATA (153 stations) † = interpolated/extrapolated station

MD [ft]	Inclination [°]	Azimuth [°]	TVD [ft]	Vert Sect [ft]	North [ft]	East [ft]	Latitude	Longitude	DLS [°/100ft]	Comments
0.00†	0.000	81.410	0.00	0.00	0.00	0.00	40°07'46.362"N	104°45'17.626"W	0.00	
16.00	0.000	81.410	16.00	0.00	0.00	0.00	40°07'46.362"N	104°45'17.626"W	0.00	TIE ON
116.00	0.220	81.410	116.00	-0.03	0.03	0.19	40°07'46.362"N	104°45'17.624"W	0.22	BEGIN GYRO SURVEYS
216.00	0.220	59.930	216.00	-0.16	0.15	0.55	40°07'46.364"N	104°45'17.619"W	0.08	
316.00	0.200	104.020	316.00	-0.21	0.21	0.88	40°07'46.364"N	104°45'17.615"W	0.16	
416.00	0.530	52.040	416.00	-0.46	0.45	1.42	40°07'46.366"N	104°45'17.608"W	0.44	
516.00	0.150	19.150	515.99	-0.87	0.86	1.82	40°07'46.370"N	104°45'17.603"W	0.41	
616.00	0.310	5.940	615.99	-1.26	1.25	1.89	40°07'46.374"N	104°45'17.602"W	0.17	
716.00	0.260	13.100	715.99	-1.75	1.74	1.97	40°07'46.379"N	104°45'17.601"W	0.06	
816.00	0.140	0.850	815.99	-2.10	2.08	2.03	40°07'46.383"N	104°45'17.600"W	0.13	
916.00	0.160	349.000	915.99	-2.35	2.34	2.00	40°07'46.385"N	104°45'17.600"W	0.04	
946.00	0.030	227.610	945.99	-2.39	2.38	1.99	40°07'46.386"N	104°45'17.600"W	0.59	TIE ONTO GYRO SURVEYS
1065.00	0.090	293.230	1064.99	-2.41	2.39	1.88	40°07'46.386"N	104°45'17.602"W	0.07	BEGIN BHI MWD+IFR SURVEYS
1159.00	0.170	336.250	1158.99	-2.56	2.55	1.75	40°07'46.387"N	104°45'17.603"W	0.13	
1251.00	1.820	55.300	1250.98	-3.52	3.51	2.90	40°07'46.397"N	104°45'17.589"W	1.95	
1342.00	2.880	56.960	1341.90	-5.61	5.58	6.01	40°07'46.417"N	104°45'17.549"W	1.17	
1433.00	4.530	60.660	1432.70	-8.65	8.58	11.06	40°07'46.447"N	104°45'17.484"W	1.83	
1525.00	5.910	67.500	1524.32	-12.29	12.18	18.60	40°07'46.482"N	104°45'17.387"W	1.64	
1616.00	7.480	62.870	1614.70	-16.84	16.67	28.20	40°07'46.527"N	104°45'17.263"W	1.82	
1707.00	9.010	64.540	1704.76	-22.67	22.44	39.90	40°07'46.584"N	104°45'17.112"W	1.70	
1799.00	10.560	66.590	1795.41	-29.20	28.88	54.15	40°07'46.647"N	104°45'16.929"W	1.73	
1890.00	12.930	68.600	1884.50	-36.33	35.91	71.28	40°07'46.717"N	104°45'16.708"W	2.64	
1982.00	14.040	68.710	1973.97	-44.25	43.72	91.26	40°07'46.794"N	104°45'16.451"W	1.21	
2066.00	14.790	67.880	2055.32	-52.10	51.46	110.69	40°07'46.870"N	104°45'16.201"W	0.93	
2151.00	16.410	68.010	2137.19	-60.80	60.04	131.87	40°07'46.955"N	104°45'15.928"W	1.91	
2236.00	16.090	64.780	2218.79	-70.45	69.55	153.66	40°07'47.049"N	104°45'15.648"W	1.13	
2322.00	17.270	64.920	2301.17	-81.06	80.04	176.01	40°07'47.153"N	104°45'15.360"W	1.37	
2407.00	17.180	63.000	2382.36	-92.24	91.09	198.62	40°07'47.262"N	104°45'15.069"W	0.68	
2491.00	16.860	61.070	2462.68	-103.89	102.61	220.34	40°07'47.376"N	104°45'14.789"W	0.77	
2576.00	16.160	60.090	2544.18	-115.88	114.48	241.38	40°07'47.493"N	104°45'14.518"W	0.89	
2661.00	16.360	62.070	2625.78	-127.50	125.98	262.21	40°07'47.607"N	104°45'14.250"W	0.69	
2746.00	16.040	65.910	2707.41	-138.03	136.38	283.51	40°07'47.710"N	104°45'13.976"W	1.32	
2831.00	15.750	67.890	2789.16	-147.29	145.52	304.91	40°07'47.800"N	104°45'13.701"W	0.72	
2916.00	15.930	67.640	2870.93	-156.19	154.30	326.39	40°07'47.887"N	104°45'13.424"W	0.23	
3001.00	16.160	68.750	2952.62	-165.04	163.02	348.20	40°07'47.973"N	104°45'13.143"W	0.45	
3086.00	16.150	69.220	3034.26	-173.65	171.50	370.28	40°07'48.057"N	104°45'12.859"W	0.15	
3171.00	17.210	70.760	3115.68	-182.12	179.84	393.20	40°07'48.139"N	104°45'12.564"W	1.35	
3256.00	16.540	70.890	3197.02	-190.36	187.95	416.51	40°07'48.219"N	104°45'12.264"W	0.79	
3341.00	16.290	70.800	3278.56	-198.38	195.83	439.20	40°07'48.297"N	104°45'11.972"W	0.30	
3426.00	16.520	69.660	3360.10	-206.63	203.95	461.79	40°07'48.377"N	104°45'11.681"W	0.47	
3511.00	16.470	68.090	3441.60	-215.46	212.65	484.30	40°07'48.463"N	104°45'11.391"W	0.53	
3596.00	16.660	68.160	3523.07	-224.62	221.67	506.79	40°07'48.553"N	104°45'11.102"W	0.22	
3681.00	16.500	67.680	3604.54	-233.86	230.79	529.26	40°07'48.643"N	104°45'10.812"W	0.25	
3766.00	15.970	66.050	3686.15	-243.32	240.12	551.12	40°07'48.735"N	104°45'10.531"W	0.82	
3851.00	15.280	67.430	3768.01	-252.49	249.17	572.15	40°07'48.824"N	104°45'10.260"W	0.92	



Actual Wellpath Report

GOBBLER 13N-23HZ AWP

Page 3 of 7



REFERENCE WELLPATH IDENTIFICATION

Operator	KERR-MCGEE OIL & GAS ONSHORE LP	Slot	SLOT#57 GOBBLER 13N-23HZ (496'FNL & 279'FEL, SEC.22)
Area	COLORADO	Well	GOBBLER 13N-23HZ
Field	WELD COUNTY (KERR MCGEE)	Wellbore	GOBBLER 13N-23HZ AWP
Facility	SEC.22-T2N-R66W		

WELLPATH DATA (153 stations)

MD [ft]	Inclination [°]	Azimuth [°]	TVD [ft]	Vert Sect [ft]	North [ft]	East [ft]	Latitude	Longitude	DLS [°/100ft]	Comments
3936.00	15.720	66.580	3849.92	-261.49	258.04	593.06	40°07'48.912"N	104°45'09.991"W	0.58	
4021.00	16.260	66.490	3931.63	-270.93	267.37	614.53	40°07'49.004"N	104°45'09.714"W	0.64	
4106.00	15.930	62.800	4013.30	-281.14	277.45	635.82	40°07'49.104"N	104°45'09.440"W	1.26	
4191.00	15.680	61.850	4095.08	-292.01	288.20	656.32	40°07'49.210"N	104°45'09.176"W	0.42	
4276.00	15.900	64.880	4176.88	-302.49	298.56	676.99	40°07'49.312"N	104°45'08.910"W	1.00	
4361.00	16.240	64.160	4258.56	-312.74	308.68	698.23	40°07'49.412"N	104°45'08.637"W	0.46	
4446.00	17.160	64.480	4339.97	-323.45	319.27	720.25	40°07'49.517"N	104°45'08.353"W	1.09	
4531.00	17.140	63.730	4421.19	-334.52	330.21	742.79	40°07'49.625"N	104°45'08.063"W	0.26	
4616.00	15.450	67.300	4502.78	-344.56	340.13	764.47	40°07'49.723"N	104°45'07.784"W	2.31	
4701.00	13.960	68.290	4584.99	-352.84	348.29	784.44	40°07'49.804"N	104°45'07.527"W	1.78	
4786.00	12.630	70.150	4667.71	-359.90	355.24	802.71	40°07'49.872"N	104°45'07.292"W	1.64	
4871.00	11.920	65.560	4750.77	-366.78	362.02	819.44	40°07'49.939"N	104°45'07.076"W	1.42	
4956.00	11.050	65.980	4834.07	-373.82	368.97	834.88	40°07'50.008"N	104°45'06.878"W	1.03	
5041.00	10.180	61.090	4917.61	-380.85	375.92	848.89	40°07'50.077"N	104°45'06.697"W	1.47	
5126.00	8.810	64.060	5001.45	-387.40	382.40	861.32	40°07'50.141"N	104°45'06.537"W	1.71	
5211.00	7.170	59.340	5085.62	-393.01	387.95	871.74	40°07'50.196"N	104°45'06.403"W	2.08	
5296.00	5.420	61.230	5170.10	-397.70	392.59	879.82	40°07'50.241"N	104°45'06.299"W	2.07	
5381.00	4.170	54.620	5254.80	-401.45	396.31	885.86	40°07'50.278"N	104°45'06.221"W	1.61	
5466.00	3.080	60.300	5339.63	-404.40	399.23	890.36	40°07'50.307"N	104°45'06.163"W	1.35	
5551.00	2.940	71.160	5424.52	-406.26	401.07	894.41	40°07'50.325"N	104°45'06.111"W	0.69	
5636.00	1.730	60.630	5509.45	-407.61	402.40	897.59	40°07'50.338"N	104°45'06.070"W	1.50	
5721.00	0.320	99.660	5594.43	-408.21	402.99	898.94	40°07'50.344"N	104°45'06.053"W	1.76	
5806.00	0.130	25.140	5679.43	-408.26	403.04	899.22	40°07'50.345"N	104°45'06.049"W	0.37	
5891.00	0.300	16.880	5764.43	-408.56	403.34	899.33	40°07'50.348"N	104°45'06.048"W	0.20	
5976.00	0.690	22.280	5849.43	-409.24	404.02	899.58	40°07'50.354"N	104°45'06.045"W	0.46	
6061.00	0.800	1.430	5934.42	-410.31	405.09	899.79	40°07'50.365"N	104°45'06.042"W	0.34	
6147.00	0.740	343.040	6020.41	-411.44	406.22	899.65	40°07'50.376"N	104°45'06.044"W	0.29	
6232.00	0.700	337.600	6105.40	-412.45	407.23	899.29	40°07'50.386"N	104°45'06.048"W	0.09	
6316.00	1.080	328.410	6189.39	-413.59	408.37	898.68	40°07'50.397"N	104°45'06.056"W	0.48	
6401.00	1.180	312.580	6274.38	-414.86	409.65	897.61	40°07'50.410"N	104°45'06.070"W	0.38	
6487.00	1.290	312.010	6360.36	-416.10	410.90	896.24	40°07'50.422"N	104°45'06.088"W	0.13	
6572.00	1.330	331.140	6445.34	-417.60	412.40	895.06	40°07'50.437"N	104°45'06.103"W	0.51	
6657.00	1.460	332.290	6530.31	-419.41	414.22	894.08	40°07'50.455"N	104°45'06.115"W	0.16	
6742.00	1.590	328.310	6615.28	-421.37	416.19	892.95	40°07'50.475"N	104°45'06.130"W	0.20	
6827.00	1.730	328.750	6700.24	-423.46	418.29	891.67	40°07'50.495"N	104°45'06.146"W	0.17	
6901.00	1.310	338.400	6774.22	-425.20	420.03	890.78	40°07'50.513"N	104°45'06.158"W	0.66	
6944.00	1.590	187.820	6817.21	-425.06	419.89	890.51	40°07'50.511"N	104°45'06.161"W	6.53	
6986.00	5.990	185.870	6859.11	-422.30	417.13	890.21	40°07'50.484"N	104°45'06.165"W	10.48	
7029.00	9.650	189.640	6901.70	-416.51	411.35	889.38	40°07'50.427"N	104°45'06.176"W	8.59	
7071.00	12.950	190.510	6942.88	-408.40	403.25	887.93	40°07'50.347"N	104°45'06.195"W	7.87	
7114.00	16.060	197.500	6984.51	-397.97	392.83	885.26	40°07'50.244"N	104°45'06.229"W	8.29	
7156.00	18.720	191.130	7024.59	-385.80	380.68	882.21	40°07'50.124"N	104°45'06.268"W	7.78	
7199.00	23.340	191.510	7064.72	-370.66	365.55	879.18	40°07'49.974"N	104°45'06.307"W	10.75	
7241.00	27.160	189.690	7102.70	-353.03	347.94	875.90	40°07'49.800"N	104°45'06.349"W	9.28	
7284.00	32.560	188.320	7139.98	-331.87	326.80	872.58	40°07'49.591"N	104°45'06.392"W	12.66	



Actual Wellpath Report

GOBBLER 13N-23HZ AWP

Page 4 of 7



REFERENCE WELLPATH IDENTIFICATION

Operator	KERR-MCGEE OIL & GAS ONSHORE LP	Slot	SLOT#57 GOBBLER 13N-23HZ (496'FNL & 279'FEL, SEC.22)
Area	COLORADO	Well	GOBBLER 13N-23HZ
Field	WELD COUNTY (KERR MCGEE)	Wellbore	GOBBLER 13N-23HZ AWP
Facility	SEC.22-T2N-R66W		

WELLPATH DATA (153 stations) † = interpolated/extrapolated station

MD [ft]	Inclination [°]	Azimuth [°]	TVD [ft]	Vert Sect [ft]	North [ft]	East [ft]	Latitude	Longitude	DLS [°/100ft]	Comments
7326.00	36.140	185.120	7174.65	-308.33	303.28	869.83	40°07'49.359"N	104°45'06.428"W	9.54	
7369.00	41.170	180.950	7208.22	-281.52	276.47	868.47	40°07'49.094"N	104°45'06.445"W	13.17	
7411.00	45.490	178.840	7238.77	-252.71	247.66	868.54	40°07'48.809"N	104°45'06.444"W	10.85	
7454.00	50.920	177.120	7267.42	-220.69	215.64	869.69	40°07'48.493"N	104°45'06.430"W	12.97	
7496.00	56.230	177.290	7292.35	-186.96	181.90	871.34	40°07'48.159"N	104°45'06.408"W	12.65	
7539.00	60.500	177.590	7314.90	-150.40	145.33	872.97	40°07'47.798"N	104°45'06.387"W	9.95	
7581.00	65.230	178.910	7334.05	-113.06	107.98	874.10	40°07'47.429"N	104°45'06.373"W	11.60	
7624.00	68.990	179.190	7350.77	-73.47	68.38	874.76	40°07'47.038"N	104°45'06.364"W	8.76	
7666.00	72.640	179.640	7364.57	-33.81	28.72	875.16	40°07'46.646"N	104°45'06.359"W	8.75	
7709.00	75.180	180.040	7376.49	7.50	-12.59	875.27	40°07'46.237"N	104°45'06.358"W	5.97	
7751.00	78.680	180.770	7385.98	48.41	-53.49	874.98	40°07'45.833"N	104°45'06.362"W	8.50	
7794.00	81.230	181.010	7393.48	90.74	-95.82	874.32	40°07'45.415"N	104°45'06.370"W	5.96	
7836.00	84.790	180.500	7398.59	132.42	-137.50	873.78	40°07'45.003"N	104°45'06.377"W	8.56	
7882.00†	88.155	180.085	7401.42	178.33	-183.41	873.54	40°07'44.549"N	104°45'06.380"W	7.37	7" CASING POINT
7906.00	89.910	179.870	7401.83	202.32	-207.40	873.55	40°07'44.312"N	104°45'06.380"W	7.37	
7991.00	89.510	179.870	7402.26	287.32	-292.40	873.74	40°07'43.472"N	104°45'06.378"W	0.47	
8076.00	90.030	179.750	7402.60	372.31	-377.40	874.03	40°07'42.632"N	104°45'06.374"W	0.63	
8161.00	90.280	178.650	7402.37	457.30	-462.39	875.21	40°07'41.792"N	104°45'06.359"W	1.33	
8246.00	91.290	178.990	7401.20	542.26	-547.36	876.96	40°07'40.953"N	104°45'06.336"W	1.25	
8330.00	91.170	178.840	7399.40	626.21	-631.33	878.55	40°07'40.123"N	104°45'06.316"W	0.23	
8415.00	91.560	178.650	7397.38	711.15	-716.28	880.41	40°07'39.283"N	104°45'06.292"W	0.51	
8500.00	91.570	179.940	7395.05	796.11	-801.24	881.46	40°07'38.444"N	104°45'06.278"W	1.52	
8585.00	91.260	179.090	7392.96	881.07	-886.21	882.18	40°07'37.604"N	104°45'06.269"W	1.06	
8670.00	91.040	178.790	7391.25	966.03	-971.18	883.75	40°07'36.765"N	104°45'06.249"W	0.44	
8755.00	90.730	178.640	7389.94	1050.98	-1056.15	885.66	40°07'35.925"N	104°45'06.225"W	0.41	
8840.00	90.550	178.390	7388.99	1135.94	-1141.12	887.86	40°07'35.085"N	104°45'06.196"W	0.36	
8925.00	91.900	179.140	7387.17	1220.88	-1226.07	889.69	40°07'34.246"N	104°45'06.173"W	1.82	
9010.00	91.470	180.670	7384.67	1305.84	-1311.03	889.83	40°07'33.406"N	104°45'06.171"W	1.87	
9095.00	91.730	180.750	7382.30	1390.81	-1395.99	888.78	40°07'32.566"N	104°45'06.185"W	0.32	
9180.00	90.090	180.110	7380.95	1475.79	-1480.98	888.14	40°07'31.727"N	104°45'06.193"W	2.07	
9265.00	90.000	180.020	7380.88	1560.79	-1565.98	888.04	40°07'30.887"N	104°45'06.194"W	0.15	
9349.00	90.060	179.950	7380.84	1644.79	-1649.98	888.07	40°07'30.057"N	104°45'06.194"W	0.11	
9434.00	89.530	179.060	7381.14	1729.78	-1734.97	888.80	40°07'29.217"N	104°45'06.184"W	1.22	
9519.00	89.870	180.150	7381.59	1814.77	-1819.97	889.39	40°07'28.377"N	104°45'06.177"W	1.34	
9604.00	90.640	180.630	7381.21	1899.77	-1904.97	888.81	40°07'27.537"N	104°45'06.184"W	1.07	
9689.00	90.490	179.930	7380.37	1984.76	-1989.96	888.39	40°07'26.697"N	104°45'06.190"W	0.84	
9773.00	90.760	180.770	7379.45	2068.76	-2073.95	887.88	40°07'25.867"N	104°45'06.196"W	1.05	
9858.00	90.360	180.560	7378.62	2153.75	-2158.94	886.89	40°07'25.027"N	104°45'06.209"W	0.53	
9943.00	89.080	180.190	7379.04	2238.75	-2243.94	886.34	40°07'24.187"N	104°45'06.216"W	1.57	
10028.00	90.150	180.660	7379.61	2323.74	-2328.93	885.71	40°07'23.347"N	104°45'06.224"W	1.37	
10113.00	89.440	180.950	7379.91	2408.74	-2413.92	884.51	40°07'22.507"N	104°45'06.240"W	0.90	
10199.00	90.060	182.160	7380.29	2494.72	-2499.89	882.18	40°07'21.658"N	104°45'06.270"W	1.58	
10284.00	88.460	181.650	7381.39	2579.68	-2584.83	879.35	40°07'20.818"N	104°45'06.306"W	1.98	
10369.00	88.400	181.570	7383.71	2664.62	-2669.77	876.97	40°07'19.979"N	104°45'06.337"W	0.12	
10454.00	87.530	181.360	7386.73	2749.55	-2754.68	874.79	40°07'19.140"N	104°45'06.365"W	1.05	



Actual Wellpath Report

GOBBLER 13N-23HZ AWP

Page 5 of 7



REFERENCE WELLPATH IDENTIFICATION			
Operator	KERR-MCGEE OIL & GAS ONSHORE LP	Slot	SLOT#57 GOBBLER 13N-23HZ (496'FNL & 279'FEL, SEC.22)
Area	COLORADO	Well	GOBBLER 13N-23HZ
Field	WELD COUNTY (KERR MCGEE)	Wellbore	GOBBLER 13N-23HZ AWP
Facility	SEC.22-T2N-R66W		

WELLPATH DATA (153 stations)										
MD [ft]	Inclination [°]	Azimuth [°]	TVD [ft]	Vert Sect [ft]	North [ft]	East [ft]	Latitude	Longitude	DLS [°/100ft]	Comments
10539.00	88.680	180.780	7389.54	2834.50	-2839.62	873.21	40°07'18.300"N	104°45'06.386"W	1.52	
10624.00	88.490	180.410	7391.64	2919.47	-2924.59	872.33	40°07'17.461"N	104°45'06.397"W	0.49	
10710.00	89.380	180.510	7393.24	3005.45	-3010.57	871.64	40°07'16.611"N	104°45'06.406"W	1.04	
10795.00	88.760	179.890	7394.62	3090.44	-3095.56	871.34	40°07'15.771"N	104°45'06.410"W	1.03	
10880.00	89.960	181.120	7395.57	3175.43	-3180.55	870.59	40°07'14.931"N	104°45'06.419"W	2.02	
10965.00	90.390	180.010	7395.31	3260.43	-3265.54	869.75	40°07'14.091"N	104°45'06.430"W	1.40	
11050.00	90.060	180.160	7394.98	3345.43	-3350.54	869.63	40°07'13.251"N	104°45'06.432"W	0.43	
11135.00	90.670	180.040	7394.44	3430.43	-3435.54	869.48	40°07'12.412"N	104°45'06.434"W	0.73	
11220.00	90.090	179.940	7393.87	3515.42	-3520.53	869.49	40°07'11.572"N	104°45'06.434"W	0.69	
11305.00	90.980	179.620	7393.08	3600.41	-3605.53	869.82	40°07'10.732"N	104°45'06.430"W	1.11	
11391.00	91.630	178.950	7391.12	3686.38	-3691.50	870.89	40°07'09.882"N	104°45'06.416"W	1.09	
11476.00	91.470	179.570	7388.82	3771.33	-3776.46	871.99	40°07'09.042"N	104°45'06.402"W	0.75	
11561.00	91.130	179.380	7386.89	3856.30	-3861.44	872.77	40°07'08.203"N	104°45'06.392"W	0.46	
11646.00	91.040	179.470	7385.28	3941.27	-3946.42	873.62	40°07'07.363"N	104°45'06.381"W	0.15	
11732.00	91.260	179.370	7383.56	4027.24	-4032.39	874.49	40°07'06.513"N	104°45'06.370"W	0.28	
11817.00	90.980	180.040	7381.89	4112.22	-4117.38	874.93	40°07'05.673"N	104°45'06.364"W	0.85	
11922.00	90.620	179.050	7380.43	4217.20	-4222.36	875.76	40°07'04.636"N	104°45'06.353"W	1.00	LAST BHI MWD+IFR SURVEY
11980.00	90.620	179.050	7379.80	4275.18	-4280.35	876.72	40°07'04.063"N	104°45'06.341"W	0.00	PROJECTION TO BIT

HOLE & CASING SECTIONS - Ref Wellbore: GOBBLER 13N-23HZ AWP Ref Wellpath: GOBBLER 13N-23HZ AWP									
String/Diameter	Start MD [ft]	End MD [ft]	Interval [ft]	Start TVD [ft]	End TVD [ft]	Start N/S [ft]	Start E/W [ft]	End N/S [ft]	End E/W [ft]
13.5in Open Hole	16.00	1016.00	1000.00	16.00	1015.99	0.00	0.00	2.37	1.94
9.625in Casing Surface	16.00	1016.00	1000.00	16.00	1015.99	0.00	0.00	2.37	1.94
8.75in Open Hole	1016.00	7891.00	6875.00	1015.99	7401.66	2.37	1.94	-192.40	873.53
7in Casing Intermediate	16.00	7882.00	7866.00	16.00	7401.42	0.00	0.00	-183.41	873.54
6.125in Open Hole	7891.00	11980.00	4089.00	7401.66	7379.80	-192.40	873.53	-4280.35	876.72



Actual Wellpath Report

GOBBLER 13N-23HZ AWP

Page 6 of 7



REFERENCE WELLPATH IDENTIFICATION

Operator	KERR-MCGEE OIL & GAS ONSHORE LP	Slot	SLOT#57 GOBBLER 13N-23HZ (496'FNL & 279'FEL, SEC.22)
Area	COLORADO	Well	GOBBLER 13N-23HZ
Field	WELD COUNTY (KERR MCGEE)	Wellbore	GOBBLER 13N-23HZ AWP
Facility	SEC.22-T2N-R66W		

TARGETS

Name	MD [ft]	TVD [ft]	North [ft]	East [ft]	Grid East [US ft]	Grid North [US ft]	Latitude	Longitude	Shape
GOBBLER 1N-23HZ1N-23HZ/1C-23HZ SECTION LINES		-3.00	-4515.03	4472.15	3212854.29	1286435.25	40°07'01.740"N	104°44'20.062"W	polygon
GOBBLER SECTION 22		30.00	95.51	-1820.65	3206523.24	1290992.56	40°07'47.305"N	104°45'41.065"W	polygon
GOBBLER 1N-23HZ/1C-23HZ HARDLINES (460' SETBACKS)		7233.00	-4515.03	4472.15	3212854.29	1286435.25	40°07'01.740"N	104°44'20.062"W	polygon
GOBBLER 13N-23HZ BHL ON PLAT (460'FSL & 760'FWL, SEC.23) REV-1		7295.00	-4305.54	1012.45	3209393.10	1286615.66	40°07'03.814"N	104°45'04.594"W	point
GOBBLER 13N-23HZ BHL ON PLAT (460'FSL & 607'FWL, SEC.23) REV-2		7358.00	-4305.95	859.49	3209240.16	1286613.96	40°07'03.810"N	104°45'06.563"W	point
GOBBLER 13N-23HZ LAND BOX		7358.00	29.85	0.31	3208344.62	1290942.21	40°07'46.657"N	104°45'17.622"W	polygon
VICTOR USX #23-5		7378.00	-1650.05	709.71	3209068.07	1289268.40	40°07'30.056"N	104°45'08.490"W	circle
GOBBLER HARDLINES (460' SETBACKS)		7430.00	95.51	-1820.65	3206523.24	1290992.56	40°07'47.305"N	104°45'41.065"W	polygon
VICTOR #21-23		7484.47	183.01	2462.21	3210805.04	1291116.04	40°07'48.169"N	104°44'45.927"W	circle
VICTOR USX #23-6		7553.00	-1611.67	2016.66	3210374.60	1289317.76	40°07'30.435"N	104°44'51.665"W	circle
VICTOR USX #23-4		7558.00	-434.49	1268.86	3209616.97	1290488.56	40°07'42.068"N	104°45'01.291"W	circle
ARROWHEAD FARMS #31-23		7573.00	-390.22	3498.82	3211846.38	1290551.56	40°07'42.503"N	104°44'32.583"W	circle
ARROWHEAD FARMS #32-23		7582.00	-1352.81	3575.43	3211931.07	1289589.69	40°07'32.991"N	104°44'31.598"W	circle

WELLPATH COMPOSITION - Ref Wellbore: GOBBLER 13N-23HZ AWP Ref Wellpath: GOBBLER 13N-23HZ AWP

Start MD [ft]	End MD [ft]	Positional Uncertainty Model	Log Name/Comment	Wellbore
16.00	946.00	Generic gyro - continuous (Standard)	MS ENERGY WIRELINES <116-946>	GOBBLER 13N-23HZ AWP
946.00	7836.00	NaviTrak (MAGCORR,IFR)	BHI MWD+IFR SURVEYS 8 3/4" HOLE <1065-7836>	GOBBLER 13N-23HZ AWP
7836.00	11922.00	OnTrak (MAGCORR,IFR)	BHI MWD+IFR SURVEYS 6 1/8" HOLE <7906-11922>	GOBBLER 13N-23HZ AWP
11922.00	11980.00	Blind Drilling (std)	Projection to bit	GOBBLER 13N-23HZ AWP



Actual Wellpath Report

GOBBLER 13N-23HZ AWP

Page 7 of 7



REFERENCE WELLPATH IDENTIFICATION			
Operator	KERR-MCGEE OIL & GAS ONSHORE LP	Slot	SLOT#57 GOBBLER 13N-23HZ (496'FNL & 279'FEL, SEC.22)
Area	COLORADO	Well	GOBBLER 13N-23HZ
Field	WELD COUNTY (KERR MCGEE)	Wellbore	GOBBLER 13N-23HZ AWP
Facility	SEC.22-T2N-R66W		

WELLPATH COMMENTS				
MD [ft]	Inclination [°]	Azimuth [°]	TVD [ft]	Comment
16.00	0.000	81.410	16.00	TIE ON
116.00	0.220	81.410	116.00	BEGIN GYRO SURVEYS
946.00	0.030	227.610	945.99	TIE ONTO GYRO SURVEYS
1065.00	0.090	293.230	1064.99	BEGIN BHI MWD+IFR SURVEYS
7882.00	88.155	180.085	7401.42	7" CASING POINT
11922.00	90.620	179.050	7380.43	LAST BHI MWD+IFR SURVEY
11980.00	90.620	179.050	7379.80	PROJECTION TO BIT