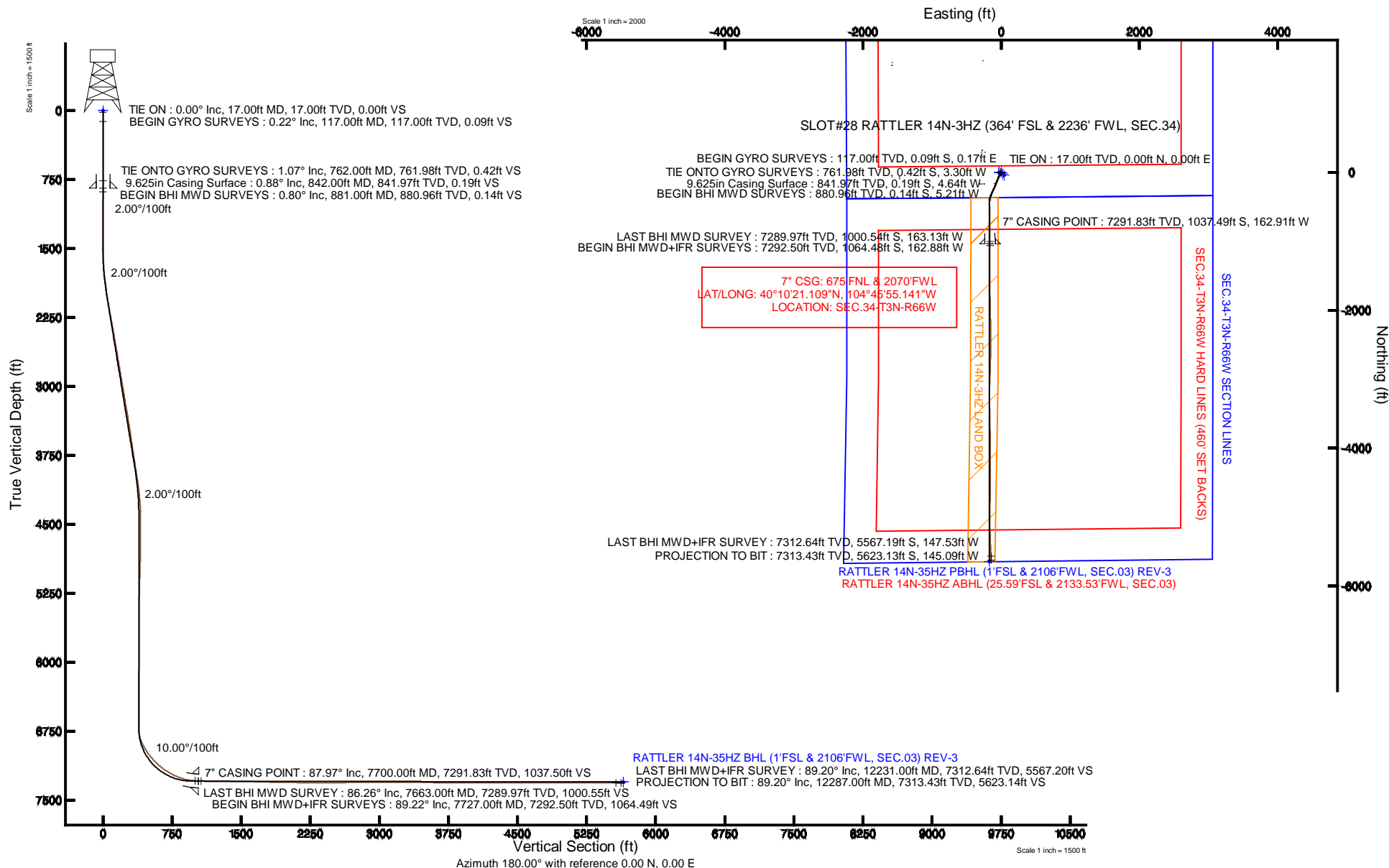


# KERR-MCGEE OIL & GAS ONSHORE LP

Location: COLORADO Slot: SLOT#28 RATTLER 14N-3HZ (364' FSL & 2236' FWL, SEC.34)  
 Field: WELD COUNTY (KERR MCGEE) Well: RATTLER 14N-3HZ  
 Facility: SEC.34-T3N-R66W Wellbore: RATTLER 14N-3HZ PWB

Plot reference wellpath is RATTLER 14N-3HZ (REV-A.0) PWP

True vertical depths are referenced to XTREME 8 (17' RKB) (RKB)	Grid System: NAD83 / Lambert Colorado SP, Northern Zone (501), US feet
Measured depths are referenced to XTREME 8 (17' RKB) (RKB)	North Reference: True north
XTREME 8 (17' RKB) to Mean Sea Level: 5008 feet	Scale: True distance
Mean Sea Level to Mud line (At Slot: SLOT#28 RATTLER 14N-3HZ (364' FSL & 2236' FWL, SEC.34)): 0 feet	Depths are in feet
Coordinates are in feet referenced to Slot	Created by: robale01 on 28/Aug/2013





# Actual Wellpath Report

RATTLER 14N-3HZ AWP

Page 1 of 6



## REFERENCE WELLPATH IDENTIFICATION

Operator	KERR-MCGEE OIL & GAS ONSHORE LP	Slot	SLOT#28 RATTLER 14N-3HZ (364' FSL & 2236' FWL, SEC.34)
Area	COLORADO	Well	RATTLER 14N-3HZ
Field	WELD COUNTY (KERR MCGEE)	Wellbore	RATTLER 14N-3HZ AWP
Facility	SEC.34-T3N-R66W		

## REPORT SETUP INFORMATION

Projection System	NAD83 / Lambert Colorado SP, Northern Zone (501), US feet	Software System	WellArchitect® 4.0.0
North Reference	True	User	Robiale01
Scale	0.999958	Report Generated	28/Aug/2013 at 14:26
Convergence at slot	n/a	Database/Source file	WA_ANADARKO/RATTLER_14N-3HZ_AWP.xml

## WELLPATH LOCATION

	Local coordinates		Grid coordinates		Geographic coordinates	
	North[ft]	East[ft]	Easting[US ft]	Northing[US ft]	Latitude	Longitude
Slot Location	-1556.21	1583.37	3205455.36	1307584.91	40°10'31.361"N	104°45'53.042"W
Facility Reference Pt			3203859.31	1309127.97	40°10'46.740"N	104°46'13.440"W
Field Reference Pt			3197771.84	1268891.29	40°04'09.600"N	104°47'36.000"W

## WELLPATH DATUM

Calculation method	Minimum curvature	XTREME 8 (17' RKB) (RKB) to Facility Vertical Datum	5008.00ft
Horizontal Reference Pt	Slot	XTREME 8 (17' RKB) (RKB) to Mean Sea Level	5008.00ft
Vertical Reference Pt	XTREME 8 (17' RKB) (RKB)	XTREME 8 (17' RKB) (RKB) to Mud Line at Slot (SLOT#28 RATTLER 14N-3HZ (364' FSL & 2236' FWL, SEC.34))	5008.00ft
MD Reference Pt	XTREME 8 (17' RKB) (RKB)	Section Origin	N 0.00, E 0.00 ft
Field Vertical Reference	Mean Sea Level	Section Azimuth	181.48°



# Actual Wellpath Report

RATTLER 14N-3HZ AWP

Page 2 of 6



## REFERENCE WELLPATH IDENTIFICATION

Operator	KERR-MCGEE OIL & GAS ONSHORE LP	Slot	SLOT#28 RATTLER 14N-3HZ (364' FSL & 2236' FWL, SEC.34)
Area	COLORADO	Well	RATTLER 14N-3HZ
Field	WELD COUNTY (KERR MCGEE)	Wellbore	RATTLER 14N-3HZ AWB
Facility	SEC.34-T3N-R66W		

## WELLPATH DATA (131 stations) † = interpolated/extrapolated station

MD [ft]	Inclination [°]	Azimuth [°]	TVD [ft]	Vert Sect [ft]	North [ft]	East [ft]	Latitude	Longitude	DLS [°/100ft]	Comments
0.00†	0.000	119.370	0.00	0.00	0.00	0.00	40°10'31.361"N	104°45'53.042"W	0.00	
17.00	0.000	119.370	17.00	0.00	0.00	0.00	40°10'31.361"N	104°45'53.042"W	0.00	TIE ON
117.00	0.220	119.370	117.00	0.09	-0.09	0.17	40°10'31.360"N	104°45'53.040"W	0.22	BEGIN GYRO SURVEYS
217.00	0.160	205.380	217.00	0.31	-0.31	0.27	40°10'31.358"N	104°45'53.038"W	0.26	
317.00	0.260	209.200	317.00	0.64	-0.64	0.10	40°10'31.355"N	104°45'53.041"W	0.10	
417.00	0.260	352.360	417.00	0.61	-0.61	-0.04	40°10'31.355"N	104°45'53.042"W	0.49	
517.00	0.500	249.340	517.00	0.55	-0.54	-0.48	40°10'31.356"N	104°45'53.048"W	0.61	
617.00	0.580	274.540	616.99	0.69	-0.65	-1.39	40°10'31.355"N	104°45'53.060"W	0.25	
717.00	0.790	275.820	716.99	0.61	-0.54	-2.58	40°10'31.356"N	104°45'53.075"W	0.21	
762.00	1.070	282.880	761.98	0.50	-0.42	-3.30	40°10'31.357"N	104°45'53.084"W	0.67	TIE ONTO GYRO SURVEYS
881.00	0.800	271.950	880.96	0.28	-0.14	-5.21	40°10'31.360"N	104°45'53.109"W	0.27	BEGIN BHI MWD SURVEYS
972.00	0.790	27.270	971.96	-0.29	0.44	-5.56	40°10'31.365"N	104°45'53.114"W	1.48	
1072.00	1.080	18.640	1071.95	-1.81	1.94	-4.94	40°10'31.380"N	104°45'53.106"W	0.32	
1161.00	0.520	93.670	1160.94	-2.60	2.71	-4.27	40°10'31.388"N	104°45'53.097"W	1.20	
1252.00	0.630	99.430	1251.93	-2.51	2.60	-3.36	40°10'31.387"N	104°45'53.085"W	0.14	
1342.00	0.580	85.330	1341.93	-2.49	2.56	-2.42	40°10'31.386"N	104°45'53.073"W	0.17	
1433.00	0.570	63.930	1432.92	-2.75	2.79	-1.56	40°10'31.389"N	104°45'53.062"W	0.23	
1524.00	1.980	189.990	1523.91	-1.41	1.44	-1.42	40°10'31.375"N	104°45'53.060"W	2.59	
1615.00	3.290	205.160	1614.81	2.54	-2.47	-2.80	40°10'31.337"N	104°45'53.078"W	1.62	
1706.00	4.930	210.300	1705.57	8.36	-8.21	-5.89	40°10'31.280"N	104°45'53.118"W	1.85	
1797.00	6.510	206.150	1796.12	16.47	-16.21	-10.13	40°10'31.201"N	104°45'53.173"W	1.79	
1888.00	8.130	207.250	1886.37	26.95	-26.57	-15.35	40°10'31.098"N	104°45'53.240"W	1.79	
1980.00	9.820	212.930	1977.25	39.51	-38.94	-22.60	40°10'30.976"N	104°45'53.333"W	2.07	
2070.00	10.940	207.770	2065.77	53.71	-52.93	-30.75	40°10'30.838"N	104°45'53.438"W	1.62	
2161.00	10.710	205.020	2155.15	69.20	-68.24	-38.35	40°10'30.687"N	104°45'53.536"W	0.62	
2252.00	11.330	201.240	2244.48	85.37	-84.23	-45.16	40°10'30.529"N	104°45'53.624"W	1.05	
2342.00	10.830	200.650	2332.80	101.68	-100.38	-51.35	40°10'30.369"N	104°45'53.704"W	0.57	
2434.00	10.320	200.070	2423.24	117.65	-116.21	-57.23	40°10'30.213"N	104°45'53.779"W	0.57	
2525.00	10.650	198.910	2512.72	133.40	-131.82	-62.75	40°10'30.058"N	104°45'53.850"W	0.43	
2616.00	10.560	200.820	2602.16	149.29	-147.57	-68.44	40°10'29.903"N	104°45'53.924"W	0.40	
2706.00	9.630	200.280	2690.77	164.20	-162.34	-73.98	40°10'29.757"N	104°45'53.995"W	1.04	
2796.00	10.840	205.650	2779.34	179.04	-177.03	-80.25	40°10'29.612"N	104°45'54.076"W	1.71	
2886.00	10.130	203.160	2867.83	194.12	-191.94	-87.03	40°10'29.464"N	104°45'54.163"W	0.94	
2972.00	10.300	203.130	2952.47	208.29	-205.96	-93.02	40°10'29.326"N	104°45'54.240"W	0.20	
3057.00	10.170	203.230	3036.12	222.33	-219.85	-98.97	40°10'29.188"N	104°45'54.317"W	0.15	
3142.00	11.090	208.520	3119.66	236.58	-233.93	-105.83	40°10'29.049"N	104°45'54.405"W	1.58	
3228.00	11.090	208.930	3204.05	251.29	-248.43	-113.78	40°10'28.906"N	104°45'54.508"W	0.09	
3313.00	10.290	207.100	3287.58	265.39	-262.35	-121.19	40°10'28.768"N	104°45'54.603"W	1.02	
3398.00	10.130	206.910	3371.23	278.98	-275.77	-128.03	40°10'28.636"N	104°45'54.691"W	0.19	
3483.00	9.790	204.550	3454.95	292.38	-289.01	-134.42	40°10'28.505"N	104°45'54.774"W	0.62	
3568.00	8.950	201.970	3538.82	305.22	-301.71	-139.90	40°10'28.379"N	104°45'54.844"W	1.10	
3654.00	9.250	199.470	3623.74	318.06	-314.44	-144.70	40°10'28.254"N	104°45'54.906"W	0.58	
3739.00	8.190	196.740	3707.75	330.40	-326.67	-148.72	40°10'28.133"N	104°45'54.958"W	1.34	
3824.00	9.750	197.670	3791.71	343.16	-339.33	-152.65	40°10'28.008"N	104°45'55.009"W	1.84	
3909.00	8.920	191.860	3875.59	356.55	-352.64	-156.19	40°10'27.876"N	104°45'55.054"W	1.48	



# Actual Wellpath Report

## RATTLER 14N-3HZ AWP

Page 3 of 6



### REFERENCE WELLPATH IDENTIFICATION

Operator	KERR-MCGEE OIL & GAS ONSHORE LP	Slot	SLOT#28 RATTLER 14N-3HZ (364' FSL & 2236' FWL, SEC.34)
Area	COLORADO	Well	RATTLER 14N-3HZ
Field	WELD COUNTY (KERR MCGEE)	Wellbore	RATTLER 14N-3HZ AWP
Facility	SEC.34-T3N-R66W		

### WELLPATH DATA (131 stations) † = interpolated/extrapolated station

MD [ft]	Inclination [°]	Azimuth [°]	TVD [ft]	Vert Sect [ft]	North [ft]	East [ft]	Latitude	Longitude	DLS [°/100ft]	Comments
3994.00	8.440	186.260	3959.61	369.25	-365.29	-158.23	40°10'27.751"N	104°45'55.080"W	1.14	
4080.00	8.460	180.610	4044.68	381.86	-377.89	-158.98	40°10'27.627"N	104°45'55.090"W	0.97	
4165.00	7.200	184.510	4128.89	393.43	-389.45	-159.47	40°10'27.512"N	104°45'55.096"W	1.61	
4250.00	5.060	195.930	4213.40	402.39	-398.37	-160.92	40°10'27.424"N	104°45'55.115"W	2.89	
4335.00	3.210	201.960	4298.18	408.24	-404.18	-162.83	40°10'27.367"N	104°45'55.140"W	2.23	
4421.00	1.100	209.200	4384.11	411.23	-407.13	-164.14	40°10'27.338"N	104°45'55.156"W	2.47	
4506.00	1.000	24.950	4469.11	411.27	-407.17	-164.22	40°10'27.337"N	104°45'55.158"W	2.47	
4677.00	1.400	93.360	4640.07	409.97	-405.94	-161.51	40°10'27.349"N	104°45'55.123"W	0.81	
4765.00	0.540	192.400	4728.07	410.42	-406.41	-160.52	40°10'27.345"N	104°45'55.110"W	1.79	
4847.00	1.130	17.220	4810.06	410.02	-406.02	-160.37	40°10'27.349"N	104°45'55.108"W	2.04	
5103.00	1.780	345.440	5065.98	403.77	-399.76	-160.62	40°10'27.411"N	104°45'55.111"W	0.40	
5274.00	1.410	336.380	5236.92	399.31	-395.26	-162.13	40°10'27.455"N	104°45'55.131"W	0.26	
5614.00	0.950	288.570	5576.85	394.69	-390.53	-166.48	40°10'27.502"N	104°45'55.187"W	0.31	
5955.00	0.190	276.800	5917.83	393.81	-389.56	-169.72	40°10'27.511"N	104°45'55.228"W	0.22	
6296.00	0.830	322.450	6258.82	391.84	-387.54	-171.79	40°10'27.531"N	104°45'55.255"W	0.21	
6638.00	0.530	294.380	6600.79	389.30	-384.92	-174.74	40°10'27.557"N	104°45'55.293"W	0.13	
6723.00	0.430	235.150	6685.79	389.33	-384.94	-175.36	40°10'27.557"N	104°45'55.301"W	0.57	
6765.00	4.420	173.140	6727.75	391.03	-386.64	-175.29	40°10'27.540"N	104°45'55.300"W	10.08	
6808.00	9.250	175.370	6770.43	396.11	-391.73	-174.82	40°10'27.490"N	104°45'55.294"W	11.25	
6851.00	14.890	172.730	6812.46	405.01	-400.66	-173.84	40°10'27.402"N	104°45'55.281"W	13.18	
6893.00	20.770	174.380	6852.43	417.75	-413.44	-172.42	40°10'27.275"N	104°45'55.263"W	14.05	
6936.00	25.730	179.530	6891.93	434.65	-430.37	-171.60	40°10'27.108"N	104°45'55.253"W	12.46	
6978.00	29.530	177.480	6929.13	454.10	-449.83	-171.07	40°10'26.916"N	104°45'55.246"W	9.33	
7021.00	34.020	175.350	6965.68	476.64	-472.42	-169.63	40°10'26.693"N	104°45'55.227"W	10.76	
7064.00	35.740	176.960	7000.95	501.12	-496.95	-167.99	40°10'26.450"N	104°45'55.206"W	4.54	
7106.00	38.980	177.600	7034.33	526.54	-522.41	-166.78	40°10'26.199"N	104°45'55.191"W	7.77	
7149.00	43.410	179.130	7066.68	554.81	-550.71	-165.99	40°10'25.919"N	104°45'55.180"W	10.56	
7192.00	47.350	180.060	7096.88	585.39	-581.31	-165.78	40°10'25.616"N	104°45'55.178"W	9.29	
7234.00	49.660	180.820	7124.70	616.84	-612.76	-166.03	40°10'25.306"N	104°45'55.181"W	5.66	
7277.00	52.180	181.060	7151.81	650.22	-646.14	-166.58	40°10'24.976"N	104°45'55.188"W	5.88	
7320.00	55.820	180.860	7177.08	685.00	-680.91	-167.16	40°10'24.632"N	104°45'55.195"W	8.47	
7362.00	59.670	179.890	7199.49	720.50	-716.42	-167.38	40°10'24.281"N	104°45'55.198"W	9.37	
7405.00	62.900	179.750	7220.15	758.19	-754.13	-167.27	40°10'23.909"N	104°45'55.197"W	7.52	
7447.00	66.100	180.060	7238.23	796.08	-792.03	-167.20	40°10'23.534"N	104°45'55.196"W	7.65	
7490.00	70.140	178.730	7254.25	835.95	-831.93	-166.78	40°10'23.140"N	104°45'55.190"W	9.82	
7533.00	73.380	178.980	7267.70	876.74	-872.75	-165.96	40°10'22.736"N	104°45'55.180"W	7.56	
7575.00	78.340	178.170	7277.96	917.40	-913.45	-164.95	40°10'22.334"N	104°45'55.167"W	11.96	
7618.00	81.910	178.750	7285.34	959.70	-955.79	-163.81	40°10'21.916"N	104°45'55.152"W	8.41	
7663.00	86.260	179.510	7289.97	1004.41	-1000.54	-163.13	40°10'21.474"N	104°45'55.143"W	9.81	LAST BHI MWD SURVEY
7700.00†	87.971	179.817	7291.83	1041.35	-1037.49	-162.91	40°10'21.109"N	104°45'55.141"W	4.70	7" CASING POINT
7727.00	89.220	180.040	7292.50	1068.33	-1064.48	-162.88	40°10'20.842"N	104°45'55.140"W	4.70	BEGIN BHI MWD+IFR SURVEYS
7770.00	89.930	179.780	7292.81	1111.31	-1107.48	-162.81	40°10'20.417"N	104°45'55.139"W	1.76	
7855.00	90.550	179.760	7292.46	1196.27	-1192.48	-162.47	40°10'19.577"N	104°45'55.135"W	0.73	
7940.00	89.230	180.230	7292.62	1281.24	-1277.47	-162.46	40°10'18.737"N	104°45'55.135"W	1.65	
8025.00	89.970	180.850	7293.21	1366.23	-1362.47	-163.26	40°10'17.897"N	104°45'55.145"W	1.14	



# Actual Wellpath Report

RATTLER 14N-3HZ AWP

Page 4 of 6



REFERENCE WELLPATH IDENTIFICATION			
Operator	KERR-MCGEE OIL & GAS ONSHORE LP	Slot	SLOT#28 RATTLER 14N-3HZ (364' FSL & 2236' FWL, SEC.34)
Area	COLORADO	Well	RATTLER 14N-3HZ
Field	WELD COUNTY (KERR MCGEE)	Wellbore	RATTLER 14N-3HZ AWB
Facility	SEC.34-T3N-R66W		

WELLPATH DATA (131 stations)										
MD [ft]	Inclination [°]	Azimuth [°]	TVD [ft]	Vert Sect [ft]	North [ft]	East [ft]	Latitude	Longitude	DLS [°/100ft]	Comments
8111.00	88.790	179.320	7294.15	1452.19	-1448.46	-163.39	40°10'17.047"N	104°45'55.147"W	2.25	
8196.00	90.120	181.090	7294.95	1537.16	-1533.45	-163.70	40°10'16.207"N	104°45'55.151"W	2.60	
8281.00	87.480	179.560	7296.73	1622.11	-1618.42	-164.18	40°10'15.368"N	104°45'55.157"W	3.59	
8367.00	87.440	179.430	7300.55	1707.98	-1704.33	-163.42	40°10'14.519"N	104°45'55.147"W	0.16	
8452.00	89.140	179.250	7303.08	1792.88	-1789.28	-162.44	40°10'13.679"N	104°45'55.135"W	2.01	
8537.00	89.200	179.040	7304.31	1877.80	-1874.27	-161.17	40°10'12.839"N	104°45'55.118"W	0.26	
8622.00	88.980	179.080	7305.66	1962.71	-1959.24	-159.78	40°10'12.000"N	104°45'55.100"W	0.26	
8708.00	89.040	178.560	7307.15	2048.61	-2045.21	-158.01	40°10'11.150"N	104°45'55.077"W	0.61	
8793.00	89.010	178.220	7308.59	2133.47	-2130.17	-155.62	40°10'10.311"N	104°45'55.047"W	0.40	
8878.00	90.830	179.610	7308.71	2218.38	-2215.15	-154.01	40°10'09.471"N	104°45'55.026"W	2.69	
8964.00	89.350	178.860	7308.58	2304.31	-2301.13	-152.86	40°10'08.621"N	104°45'55.011"W	1.93	
9049.00	90.310	181.300	7308.83	2389.28	-2386.13	-152.98	40°10'07.781"N	104°45'55.013"W	3.08	
9134.00	89.850	180.300	7308.71	2474.27	-2471.12	-154.17	40°10'06.941"N	104°45'55.028"W	1.29	
9219.00	90.090	179.490	7308.76	2559.24	-2556.12	-154.01	40°10'06.101"N	104°45'55.026"W	0.99	
9304.00	90.590	180.910	7308.25	2644.21	-2641.11	-154.31	40°10'05.261"N	104°45'55.030"W	1.77	
9390.00	90.650	181.660	7307.32	2730.21	-2727.08	-156.24	40°10'04.412"N	104°45'55.055"W	0.87	
9475.00	90.740	181.650	7306.29	2815.20	-2812.04	-158.69	40°10'03.572"N	104°45'55.086"W	0.11	
9645.00	90.520	182.610	7304.42	2985.18	-2981.91	-165.01	40°10'01.894"N	104°45'55.168"W	0.58	
9731.00	90.400	182.180	7303.73	3071.16	-3067.83	-168.60	40°10'01.045"N	104°45'55.214"W	0.52	
9816.00	89.910	180.700	7303.50	3156.16	-3152.80	-170.74	40°10'00.205"N	104°45'55.241"W	1.83	
9901.00	89.560	180.670	7303.89	3241.15	-3237.80	-171.76	40°09'59.365"N	104°45'55.254"W	0.41	
9986.00	89.440	178.700	7304.64	3326.10	-3322.79	-171.29	40°09'58.525"N	104°45'55.248"W	2.32	
10071.00	89.040	178.680	7305.76	3410.99	-3407.76	-169.35	40°09'57.685"N	104°45'55.223"W	0.47	
10157.00	89.010	177.950	7307.23	3496.85	-3493.71	-166.82	40°09'56.836"N	104°45'55.191"W	0.85	
10242.00	89.590	178.830	7308.27	3581.72	-3578.67	-164.43	40°09'55.996"N	104°45'55.160"W	1.24	
10327.00	89.660	179.370	7308.82	3666.64	-3663.65	-163.10	40°09'55.157"N	104°45'55.143"W	0.64	
10412.00	89.900	179.260	7309.15	3751.58	-3748.65	-162.08	40°09'54.317"N	104°45'55.130"W	0.31	
10583.00	89.960	178.710	7309.36	3922.42	-3919.62	-159.05	40°09'52.627"N	104°45'55.091"W	0.32	
10668.00	89.780	179.940	7309.55	4007.36	-4004.61	-158.05	40°09'51.787"N	104°45'55.078"W	1.46	
10838.00	89.810	179.440	7310.16	4177.27	-4174.61	-157.13	40°09'50.107"N	104°45'55.066"W	0.29	
10924.00	89.220	180.540	7310.89	4263.24	-4260.60	-157.11	40°09'49.258"N	104°45'55.066"W	1.45	
11094.00	89.840	179.910	7312.28	4433.19	-4430.60	-157.78	40°09'47.578"N	104°45'55.074"W	0.52	
11179.00	89.840	181.210	7312.52	4518.18	-4515.59	-158.61	40°09'46.738"N	104°45'55.085"W	1.53	
11349.00	89.870	180.520	7312.95	4688.17	-4685.57	-161.18	40°09'45.058"N	104°45'55.118"W	0.41	
11520.00	90.030	180.690	7313.10	4859.15	-4856.56	-162.98	40°09'43.368"N	104°45'55.141"W	0.14	
11691.00	90.030	179.810	7313.01	5030.11	-5027.55	-163.73	40°09'41.679"N	104°45'55.151"W	0.51	
11861.00	90.870	178.980	7311.67	5199.98	-5197.54	-161.94	40°09'39.999"N	104°45'55.128"W	0.69	
11946.00	91.080	178.530	7310.23	5284.88	-5282.50	-160.09	40°09'39.159"N	104°45'55.104"W	0.58	
12117.00	88.700	176.830	7310.55	5455.48	-5453.35	-153.17	40°09'37.471"N	104°45'55.015"W	1.71	
12231.00	89.200	177.500	7312.64	5569.14	-5567.19	-147.53	40°09'36.346"N	104°45'54.942"W	0.73	LAST BHI MWD+IFR SURVEY
12287.00	89.200	177.500	7313.43	5625.00	-5623.13	-145.09	40°09'35.793"N	104°45'54.911"W	0.00	PROJECTION TO BIT



# Actual Wellpath Report

RATTLER 14N-3HZ AWP

Page 5 of 6



## REFERENCE WELLPATH IDENTIFICATION

Operator	KERR-MCGEE OIL & GAS ONSHORE LP	Slot	SLOT#28 RATTLER 14N-3HZ (364' FSL & 2236' FWL, SEC.34)
Area	COLORADO	Well	RATTLER 14N-3HZ
Field	WELD COUNTY (KERR MCGEE)	Wellbore	RATTLER 14N-3HZ AWP
Facility	SEC.34-T3N-R66W		

## HOLE & CASING SECTIONS - Ref Wellbore: RATTLER 14N-3HZ AWP Ref Wellpath: RATTLER 14N-3HZ AWP

String/Diameter	Start MD [ft]	End MD [ft]	Interval [ft]	Start TVD [ft]	End TVD [ft]	Start N/S [ft]	Start E/W [ft]	End N/S [ft]	End E/W [ft]
13.5in Open Hole	17.00	842.00	825.00	17.00	841.97	0.00	0.00	-0.19	-4.64
9.625in Casing Surface	17.00	842.00	825.00	17.00	841.97	0.00	0.00	-0.19	-4.64
8.75in Open Hole	842.00	7710.00	6868.00	841.97	7292.15	-0.19	-4.64	-1047.48	-162.89
7in Casing Intermediate	17.00	7700.00	7683.00	17.00	7291.83	0.00	0.00	-1037.49	-162.91
6.125in Open Hole	7710.00	12287.00	4577.00	7292.15	7313.43	-1047.48	-162.89	-5623.13	-145.09

## WELLPATH COMPOSITION - Ref Wellbore: RATTLER 14N-3HZ AWP Ref Wellpath: RATTLER 14N-3HZ AWP

Start MD [ft]	End MD [ft]	Positional Uncertainty Model	Log Name/Comment	Wellbore
17.00	762.00	Generic gyro - continuous (Standard)	MS WIRELINE GYRO SURVEYS <117-762>	RATTLER 14N-3HZ AWP
762.00	7663.00	NaviTrak (Standard)	BHI NAVITRAK MWD 8.75" HOLE <881-7663>	RATTLER 14N-3HZ AWP
7663.00	12231.00	NaviTrak (MAGCORR,IFR)	BHI NAVITRAK MWD+IFR 6 1/8" HOLE <7727-12231>	RATTLER 14N-3HZ AWP
12231.00	12287.00	Blind Drilling (std)	Projection to bit	RATTLER 14N-3HZ AWP





# Actual Wellpath Report

RATTLER 14N-3HZ AWP

Page 6 of 6



## REFERENCE WELLPATH IDENTIFICATION

Operator	KERR-MCGEE OIL & GAS ONSHORE LP	Slot	SLOT#28 RATTLER 14N-3HZ (364' FSL & 2236' FWL, SEC.34)
Area	COLORADO	Well	RATTLER 14N-3HZ
Field	WELD COUNTY (KERR MCGEE)	Wellbore	RATTLER 14N-3HZ AWB
Facility	SEC.34-T3N-R66W		

## WELLPATH COMMENTS

MD [ft]	Inclination [°]	Azimuth [°]	TVD [ft]	Comment
17.00	0.000	119.370	17.00	TIE ON
117.00	0.220	119.370	117.00	BEGIN GYRO SURVEYS
762.00	1.070	282.880	761.98	TIE ONTO GYRO SURVEYS
881.00	0.800	271.950	880.96	BEGIN BHI MWD SURVEYS
7663.00	86.260	179.510	7289.97	LAST BHI MWD SURVEY
7700.00	87.971	179.817	7291.83	7" CASING POINT
7727.00	89.220	180.040	7292.50	BEGIN BHI MWD+IFR SURVEYS
12231.00	89.200	177.500	7312.64	LAST BHI MWD+IFR SURVEY
12287.00	89.200	177.500	7313.43	PROJECTION TO BIT