
WPX ENERGY ROCKY MOUNTAIN LLC-EBUS

PA 521-11

Osage County , Oklahoma

Cement Surface Casing

13-Jun-2013

Post Job Report

The Road to Excellence Starts with Safety

Sold To #: 300721	Ship To #: 3003687	Quote #:	Sales Order #: 900510186
Customer: WPX ENERGY ROCKY MOUNTAIN LLC-EBUS		Customer Rep: BRUNK, MIKE	
Well Name: PA		Well #: 521-11	API/UWI #: 05-045-21819
Field:		City (SAP): PARACHUTE	County/Parish: Osage
Lat: N 39.453 deg. OR N 39 deg. 27 min. 10.39 secs.		Long: W 107.967 deg. OR W -108 deg. 1 min. 57.846 secs.	
Contractor: Cyclone Drilling		Rig/Platform Name/Num: Cyclone 17	
Job Purpose: Cement Surface Casing			
Well Type: Development Well		Job Type: Cement Surface Casing	
Sales Person: MAYO, MARK		Srvc Supervisor: CHASTAIN, DERICK	MBU ID Emp #: 455848

Job Personnel

HES Emp Name	Exp Hrs	Emp #	HES Emp Name	Exp Hrs	Emp #	HES Emp Name	Exp Hrs	Emp #
CHASTAIN, DERICK Allan	0.0	455848	EICKHOFF, ROBERT Edward	0.0	495311	SINCLAIR, DAN J	0.0	338784

Equipment

HES Unit #	Distance-1 way	HES Unit #	Distance-1 way	HES Unit #	Distance-1 way	HES Unit #	Distance-1 way
10001431	60 mile	10551730C	60 mile	10969711	60 mile	11583933	60 mile
11808841	60 mile						

Job Hours

Date	On Location Hours	Operating Hours	Date	On Location Hours	Operating Hours	Date	On Location Hours	Operating Hours

TOTAL Total is the sum of each column separately

Job

Job Times

Formation Name	Top	Bottom	Called Out	Date	Time	Time Zone
Form Type		BHST	On Location	13 - Jun - 2013	05:15	MST
Job depth MD	967. ft	Job Depth TVD	Job Started	13 - Jun - 2013	07:31	MST
Water Depth		Wk Ht Above Floor	Job Completed	13 - Jun - 2013	08:16	MST
Perforation Depth (MD)	From	To	Departed Loc	13 - Jun - 2013	09:00	MST

Well Data

Description	New / Used	Max pressure psig	Size in	ID in	Weight lbm/ft	Thread	Grade	Top MD ft	Bottom MD ft	Top TVD ft	Bottom TVD ft

Tools and Accessories

Type	Size	Qty	Make	Depth	Type	Size	Qty	Make	Depth	Type	Size	Qty	Make
Guide Shoe					Packer					Top Plug			
Float Shoe					Bridge Plug					Bottom Plug			
Float Collar					Retainer					SSR plug set			
Insert Float										Plug Container			
Stage Tool										Centralizers			

Miscellaneous Materials

Gelling Agt	Conc	Surfactant	Conc	Acid Type	Qty	Conc %
Treatment Fld	Conc	Inhibitor	Conc	Sand Type	Size	Qty

Fluid Data

Stage/Plug #: 1

Fluid #	Stage Type	Fluid Name	Qty	Qty uom	Mixing Density lbm/gal	Yield ft3/sk	Mix Fluid Gal/sk	Rate bbl/min	Total Mix Fluid Gal/sk

Stage/Plug #: 1

Fluid #	Stage Type	Fluid Name	Qty	Qty uom	Mixing Density uom	Yield uom	Mix Fluid uom	Rate uom	Total Mix Fluid uom

Stage/Plug #: 1										
Fluid #	Stage Type	Fluid Name	Qty	Qty uom	Mixing Density lbm/gal	Yield ft ³ /sk	Mix Fluid Gal/sk	Rate bbl/min	Total Mix Fluid Gal/sk	
1	Fresh Water Spacer		20.00	bbl	.	.0	.0	.0		
2	VersaCem GJ1Tail Cement	VERSACEM (TM) SYSTEM (452010)	255.0	sacks	12.8	2.11	11.75		11.75	
3	Fresh Water Displacement		72.00	bbl	.	.0	.0	.0		
Calculated Values			Pressures			Volumes				
Displacement		Shut In: Instant		Lost Returns		Cement Slurry		Pad		
Top Of Cement		5 Min		Cement Returns		Actual Displacement		Treatment		
Frac Gradient		15 Min		Spacers		Load and Breakdown		Total Job		
Rates										
Circulating			Mixing			Displacement			Avg. Job	
Cement Left In Pipe		Amount	0 ft	Reason	Shoe Joint					
Frac Ring # 1 @	ID	Frac ring # 2 @	ID	Frac Ring # 3 @	ID	Frac Ring # 4 @	ID			
The Information Stated Herein Is Correct				Customer Representative Signature						

The Road to Excellence Starts with Safety

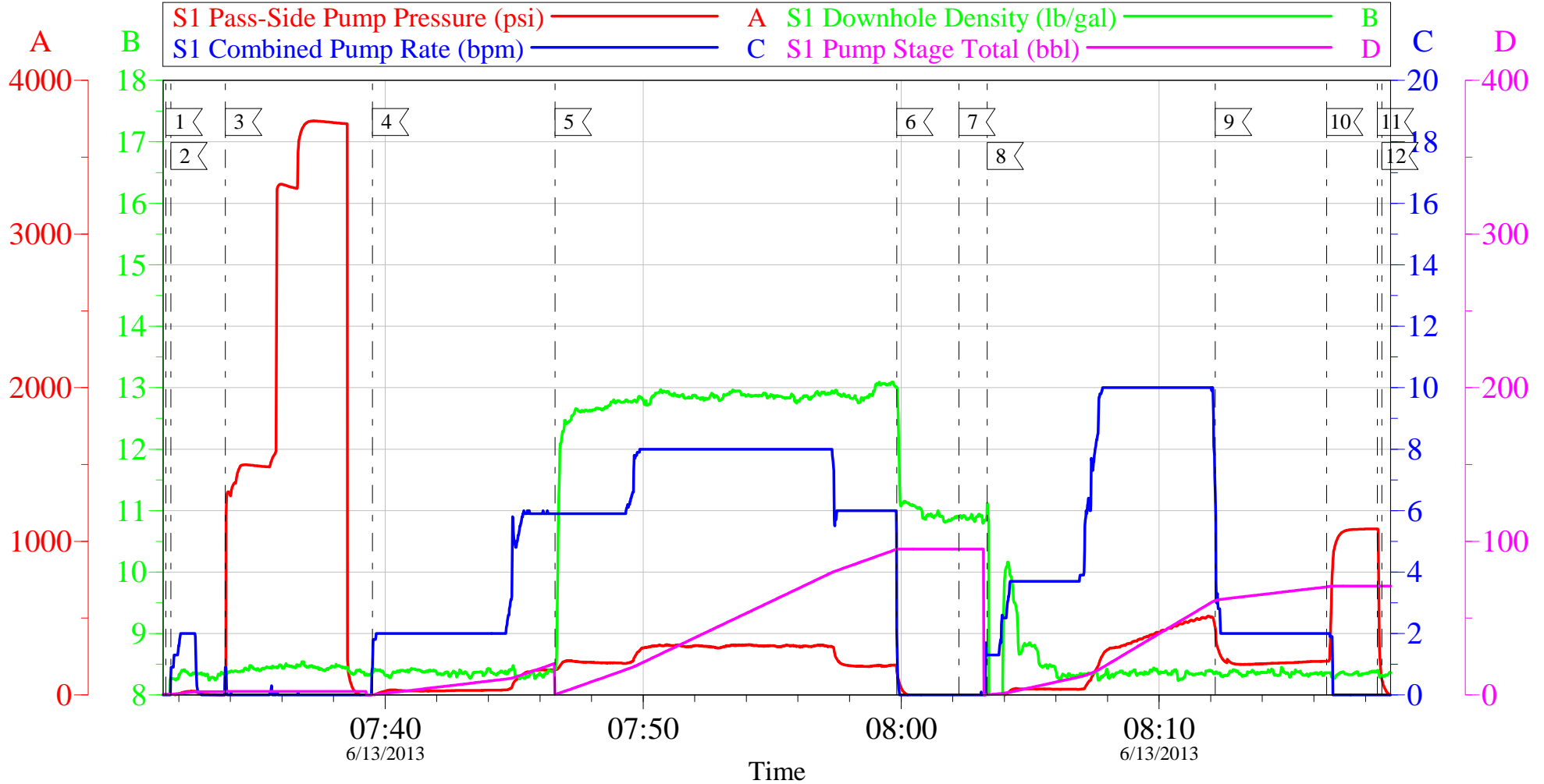
Sold To #: 300721	Ship To #: 3003687	Quote #:	Sales Order #: 900510186
Customer: WPX ENERGY ROCKY MOUNTAIN LLC-EBUS		Customer Rep: BRUNK, MIKE	
Well Name: PA	Well #: 521-11	API/UWI #: 05-045-21819	
Field:	City (SAP): PARACHUTE	County/Parish: Osage	State: Oklahoma
Legal Description:			
Lat: N 39.453 deg. OR N 39 deg. 27 min. 10.39 secs.		Long: W 107.967 deg. OR W -108 deg. 1 min. 57.846 secs.	
Contractor: Cylcone Drilling		Rig/Platform Name/Num: Cyclone 17	
Job Purpose: Cement Surface Casing			Ticket Amount:
Well Type: Development Well		Job Type: Cement Surface Casing	
Sales Person: MAYO, MARK		Srvc Supervisor: CHASTAIN, DERICK	MBU ID Emp #: 455848

Activity Description	Date/Time	Cht #	Rate bbl/min	Volume bbl		Pressure psig		Comments
				Stage	Total	Tubing	Casing	
Call Out	06/13/2013 01:30							COORDINATOR CALLS OUT CREW
Pre-Convoy Safety Meeting	06/13/2013 04:20							WITH ALL HES. DISCUSSED HAZARDS AND ROUTE
Arrive At Loc	06/13/2013 05:15							RIG STILL RUNNING CASING
Assessment Of Location Safety Meeting	06/13/2013 05:20							WITH ALL HES
Other	06/13/2013 06:30							SPOT EQUIPMENT
Pre-Rig Up Safety Meeting	06/13/2013 06:50							WITH ALL HES
Rig-Up Equipment	06/13/2013 07:00							PUMP TRUCK, BUL TRUCK, PICKUP
Pre-Job Safety Meeting	06/13/2013 07:20							WITH ALL HES AND RIG CREW
Start Job	06/13/2013 07:31							TD- 967 , TP- 951 , SJ- 45.3 , CSG- 9 5/8" 32.3# MUD: 9.5 PPG, 104 TEMP, YP 22, PV 16
Pump Water	06/13/2013 07:31		2	2			39.0	FRESH WATER TO FILL LINES
Test Lines	06/13/2013 07:33							LOW- 1530 PSI, HIGH- 3752 PSI
Pump Spacer	06/13/2013 07:39		6	20			163.0	FRESH WATER
Pump Tail Cement	06/13/2013 07:46		8	95.8			326.0	255 SKS @ 12.8 PPG, 2.11 FT3/SK, 11.75 GAL/SK
Shutdown	06/13/2013 07:59							
Drop Top Plug	06/13/2013 08:02							VERIFY PLUG LAUNCHED

Activity Description	Date/Time	Cht #	Rate bbl/min	Volume bbl		Pressure psig		Comments
				Stage	Total	Tubing	Casing	
Pump Displacement	06/13/2013 08:03		10	71.3			512.0	FRESH WATER. CEMENT TO SURFACE @ 50 BBLS GONE
Slow Rate	06/13/2013 08:12		2				236.0	SLOW RATE 10 BBL PRIOR TO CALCULATED DISPLACEMENT
Bump Plug	06/13/2013 08:16		2				1092. 0	PLUG LANDED
Check Floats	06/13/2013 08:18							FLOATS HOLDING
End Job	06/13/2013 08:18							NO ADD HOURS, NO DERRICK CHARGE, USED 120# SUGAR
Pre-Rig Down Safety Meeting	06/13/2013 08:20							WITH ALL HES
Rig-Down Equipment	06/13/2013 08:30							
Pre-Convoy Safety Meeting	06/13/2013 08:50							WITH ALL HES
Crew Leave Location	06/13/2013 09:00							LEFT LOCATION FREE OF DEBRIS
Comment	06/13/2013 09:00							THANK YOU FOR CHOOSING HALLIBURTON. DERICK CHASTAIN AND CREW

WPX ENERGY - PA 521-11

9 5/8" SURFACE CASING

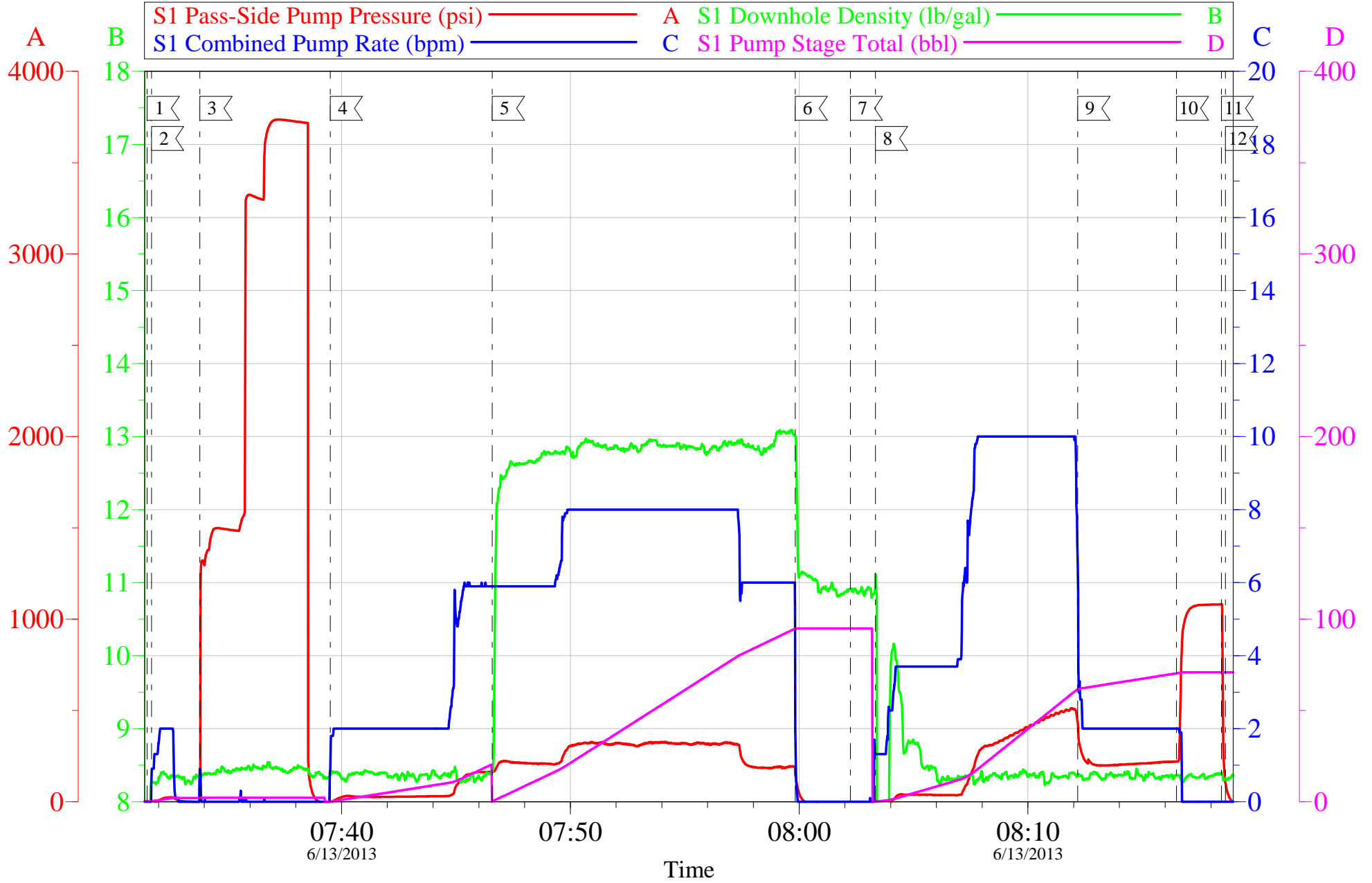


Local Event Log								
1	START JOB	07:31:30	2	FILL LINES	07:31:42	3	TEST LINES	07:33:48
4	PUMP H2O SPACER	07:39:30	5	PUMP TAIL CEMENT	07:46:35	6	SHUTDOWN	07:59:50
7	DROP TOP PLUG	08:02:14	8	PUMP DISPLACEMENT	08:03:20	9	SLOW RATE	08:12:10
10	BUMP PLUG	08:16:29	11	CHECK FLOATS	08:18:27	12	END JOB	08:18:38

Customer:	WPX ENERGY	Job Date:	13-Jun-2013	Sales Order #:	900510186
Well Description:	PA 521-11	Job Type:	SURFACE	ADC Used:	YES
Company Rep:	MIKE BRUNKE	Cement Supervisor:	DERICK CHASTAIN	Elite #2:	ROB EICKHOFF

WPX ENERGY - PA 521-11

9 5/8" SURFACE CASING



Customer: WPX ENERGY	Job Date: 13-Jun-2013	Sales Order #: 900510186
Well Description: PA 521-11	Job Type: SURFACE	ADC Used: YES
Company Rep: MIKE BRUNKE	Cement Supervisor: DERICK CHASTAIN	Elite #2: ROB EICKHOFF

OptiCem v6.4.10
13-Jun-13 08:31

Sales Order #: 900510186	Line Item: 10	Survey Conducted Date: 6/13/2013
Customer: WPX ENERGY ROCKY MOUNTAIN LLC-EBUS		Job Type (BOM): CMT SURFACE CASING BOM
Customer Representative: MIKE BRUNK		API / UWI: (leave blank if unknown) 05-045-21819
Well Name: PA		Well Number: 521-11
Well Type: Development Well	Well Country: United States of America	
H2S Present:	Well State: Oklahoma	Well County: Osage

Dear Customer,

We hope that you were satisfied with the service quality of this job performed by Halliburton. It is the aim of our management and service personnel to deliver equipment and service of a standard unmatched in the service sector of the energy industry.

Please take the time to let us know if our performance met with your satisfaction. Please be as critical as possible to ensure we constantly improve our service. Your comments are of great value to us and are intended for the exclusive use of Halliburton.

CUSTOMER SATISFACTION SURVEY

CATEGORY	CUSTOMER SATISFACTION RESPONSE	
Survey Conducted Date	The date the survey was conducted	6/13/2013
Survey Interviewer	The survey interviewer is the person who initiated the survey.	DERICK CHASTAIN (HB23225)
Customer Participation	Did the customer participate in this survey? (Y/N)	Yes
Customer Representative	Enter the Customer representative name	MIKE BRUNK
HSE	Was our HSE performance satisfactory? Circle Y or N	Yes
Equipment	Were you satisfied with our Equipment? Circle Y or N	Yes
Personnel	Were you satisfied with our people? Circle Y or N	Yes
Customer Comment	Customer's Comment	

CUSTOMER SIGNATURE

Sales Order #: 900510186	Line Item: 10	Survey Conducted Date: 6/13/2013
Customer: WPX ENERGY ROCKY MOUNTAIN LLC-EBUS		Job Type (BOM): CMT SURFACE CASING BOM
Customer Representative: MIKE BRUNK		API / UWI: (leave blank if unknown) 05-045-21819
Well Name: PA		Well Number: 521-11
Well Type: Development Well	Well Country: United States of America	
H2S Present:	Well State: Oklahoma	Well County: Osage

KEY PERFORMANCE INDICATORS

General	
Survey Conducted Date	6/13/2013
The date the survey was conducted	

Cementing KPI Survey	
Type of Job	0
Select the type of job. (Cementing or Non-Cementing)	
Select the Maximum Deviation range for this Job	Vertical
What is the highest deviation for the job you just completed? This may not be the maximum well deviation.	
Total Operating Time (hours)	4
Total Operating Hours Including Rig-up, Pumping, Rig-down. Enter in decimal format.	
HSE Incident, Accident, Injury	No
HSE Incident, Accident, Injury. This should be recordable incidents only.	
Was the job purpose achieved?	Yes
Was the job delivered correctly as per customer agreed design?	
Operating Hours (Pumping Hours)	2
Total number of hours pumping fluid on this job. Enter in decimal format.	
Customer Non-Productive Rig Time (hrs)	0
Lost time due to Halliburton in the start, execution, or completion of an ordered service or product, or delays in a follow-on service. Enter in decimal format. 0 if none.	
Type of Rig Classification Job Was Performed	Drilling Rig (Portable)
Type Of Rig (classification) Job Was Performed On	
Number Of JSAs Performed	8
Number Of Jsas Performed	
Number of Unplanned Shutdowns	0
Unplanned shutdown is when injection stops for any period of time.	
Was this a Primary Cement Job (Yes / No)	Yes

Sales Order #: 900510186	Line Item: 10	Survey Conducted Date: 6/13/2013
Customer: WPX ENERGY ROCKY MOUNTAIN LLC-EBUS		Job Type (BOM): CMT SURFACE CASING BOM
Customer Representative: MIKE BRUNK		API / UWI: (leave blank if unknown) 05-045-21819
Well Name: PA		Well Number: 521-11
Well Type: Development Well	Well Country: United States of America	
H2S Present:	Well State: Oklahoma	Well County: Osage

Primary Cement Job= Casing job, Liner job, or Tie-back job.	
Did We Run Wiper Plugs? Did We Run Top And Bottom Casing Wiper Plugs?	Top
Mixing Density of Job Stayed in Designed Density Range (0-100%) Density Range defined as +/- .20 ppg. Calculation: Total BBLs cement mixed at designed density divided by total BBLs of cement multiplied by 100	99
Was Automated Density Control Used? Was Automated Density Control (ADC) Used ?	Yes
Pump Rate (percent) of Job Stayed At Designed Pump Rate Pump Rate range defined as +/- 1bbl/min. Calculation: Total BBLs of fluid pumped at the designed rate divided by Total BBLs of fluid pumped, multiplied by 100	99
Nbr of Remedial Sqz Jobs Rqd - Competition Number Of Remedial Squeeze Jobs Required After Primary Job Performed By Competition	0
Nbr of Remedial Plug Jobs Rqd - HES Number Of Remedial Plug Jobs Needed After Primary Plug Pumped By HES	0
Nbr of Remedial Sqz Jobs Rqd - HES Number Of Remedial Squeeze Jobs Required After Primary Job Performed By HES	0