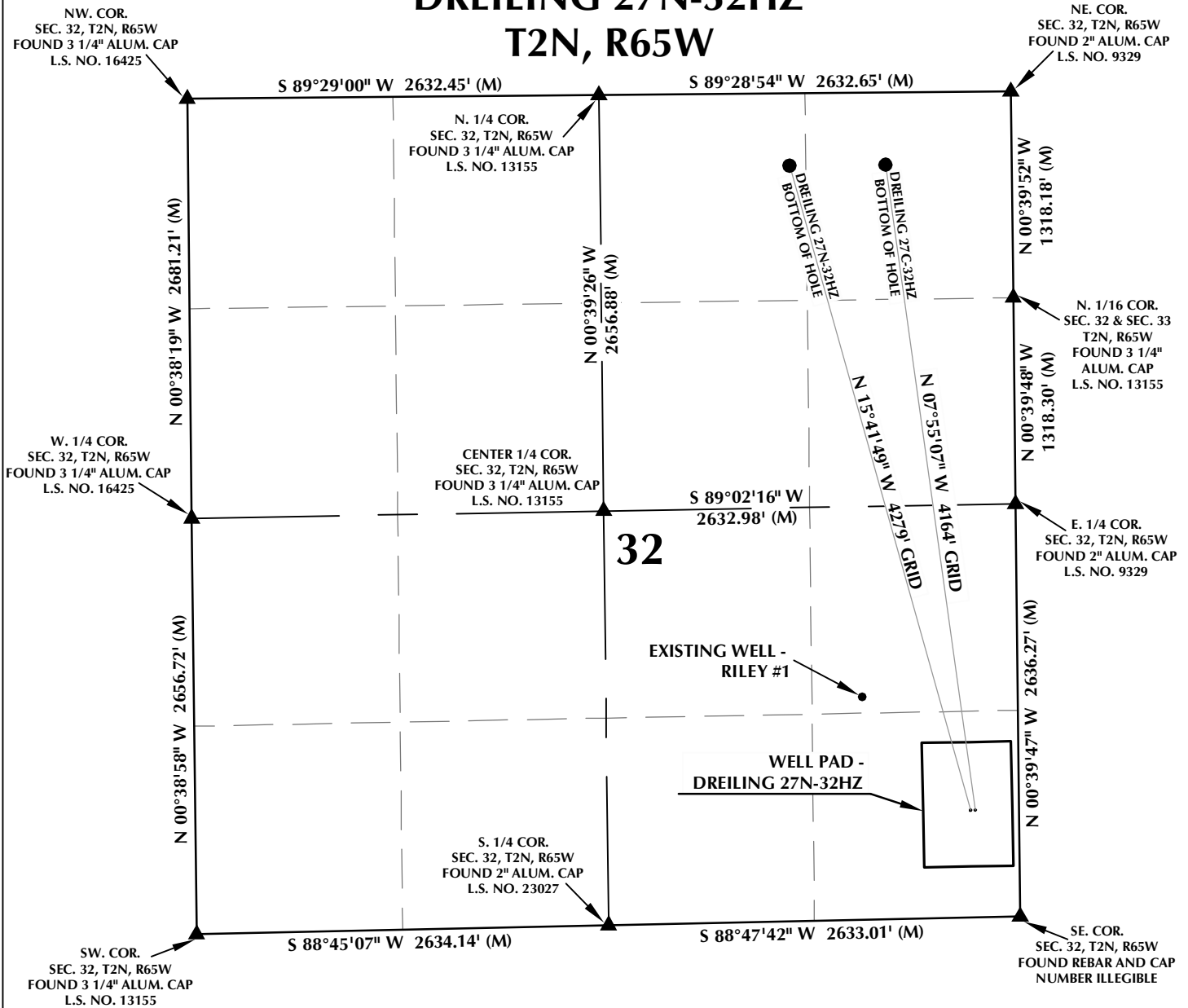


DREILING 27N-32HZ T2N, R65W



WELL NOTES:

DREILING 27N-32HZ
SURFACE: 687' FSL, 310' FEL
BOTTOM HOLE: 460' FNL, 1420' FEL
DREILING 27C-32HZ
SURFACE: 687' FSL, 280' FEL
BOTTOM HOLE: 460' FNL, 806' FEL

NOTES:

- ▲ INDICATES FOUND SECTION CORNER
- INDICATES CALCULATED CORNER
- BASIS OF BEARING DERIVED FROM COLORADO COORDINATE SYSTEM 1983 NORTH ZONE UNLESS OTHERWISE NOTED.
- ALL MEASURED DISTANCES ARE GRID.
- COMBINED SCALE FACTOR: .99972864
- WELL FOOTAGES ARE MEASURED AT RIGHT ANGLES TO THE SECTION LINES.

WELL PAD - DREILING 27N-32HZ

INTERFERENCE DIAGRAM
DREILING 27N-32HZ &
DREILING 27C-32HZ
LOCATED IN SECTION 32
T2N, R65W, 6TH P.M.
WELD COUNTY, COLORADO

**Kerr-McGee Oil &
Gas Onshore L.P.**
1099 18th Street
Denver, Colorado 80202



CONSULTING, LLC

2155 North Main Street
Sheridan, Wyoming 82801
Phone 307-674-0609
Fax 307-674-0182

DRAFTED BY:	APF	CHECKED BY:	BJR
DATE DRAFTED:	6/29/12	DATE SURVEYED:	6/19/12
REVISED:	4/24/13	FILE NAME:	12-59