

# BONANZA CREEK OIL COMPANY

Location: COLORADO Slot: SLOT#04 STATE NORTH PLATTE 11-14-26HNB (397'FNL & 956'FWL, SEC.26)  
Field: WELD COUNTY Well: STATE NORTH PLATTE 11-14-26HNB  
Facility: SEC.26-T5N-R63W Wellbore: STATE NORTH PLATTE 11-14-26HNB PWB

Plot reference wellpath is STATE NORTH PLATTE 11-14-26HNB (REV-B.0) PWP

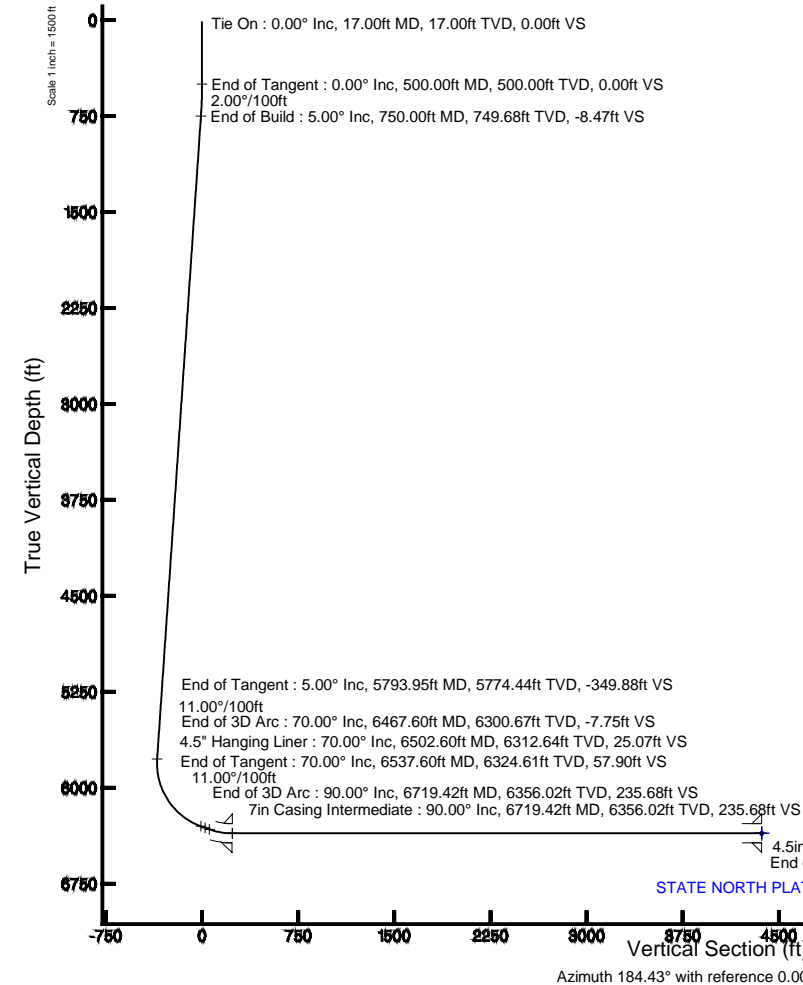
True vertical depths are referenced to CADE 22 (RKB) Grid System: NAD83 / Lambert Colorado SP, Northern Zone (501), US feet  
Measured depths are referenced to CADE 22 (RKB) North Reference: True north  
CADE 22 (RKB) to Mean Sea Level: 4563 feet Scale: True distance  
Mean Sea Level to Mud line (At Slot: SLOT#04 STATE NORTH PLATTE 11-14-26HNB (397'FNL & 956'FWL, SEC.26)): 0 feet Depths are in feet  
Coordinates are in feet referenced to Slot Created by: gunatam on 8/9/2013

## Location Information

Facility Name	Grid East (US ft)	Grid North (US ft)	Latitude	Longitude
SEC.26-T5N-R63W	3303950.838	1381774.536	40°22'34.464"N	104°24'32.436"W
Slot	59.29	0.00	3303950.121	1381832.819
SLOT#04 STATE NORTH PLATTE 11-14-26HNB (397'FNL & 956'FWL, SEC.26)				
CADE 22 (RKB) to Mud line (At Slot: SLOT#04 STATE NORTH PLATTE 11-14-26HNB (397'FNL & 956'FWL, SEC.26))				4563ft
Mean Sea Level to Mud line (At Slot: SLOT#04 STATE NORTH PLATTE 11-14-26HNB (397'FNL & 956'FWL, SEC.26))				0ft
CADE 22 (RKB) to Mean Sea Level				4563ft

## Survey Program

Start MD (ft)	End MD (ft)	Tool	Model	Log Name/Comment	Wellbore
17.00	10858.86	NavitTrak	NavitTrak (Standard)		STATE NORTH PLATTE 11-14-26HNB PWB

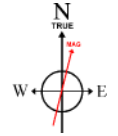
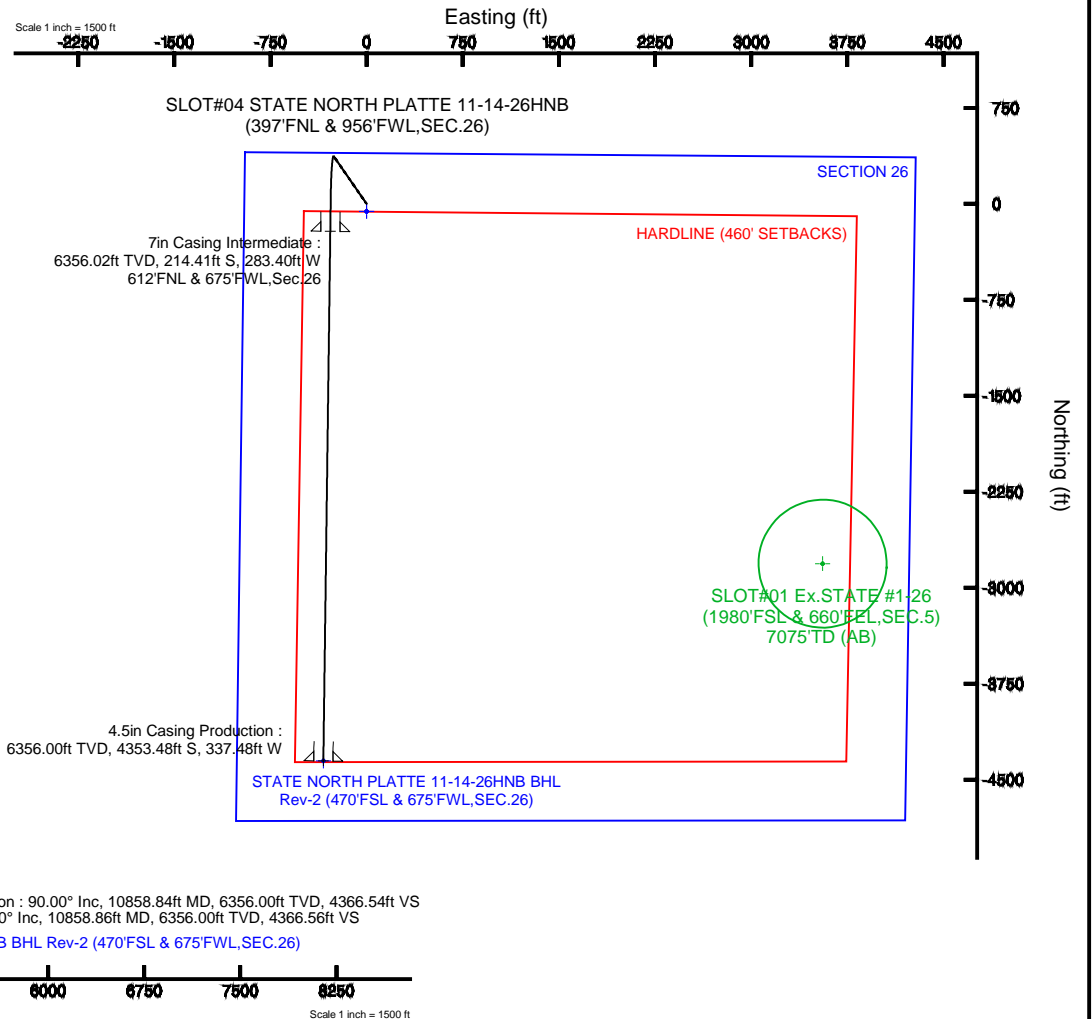


## Well Profile Data

Design Comment	MD (ft)	Inc (°)	Az (°)	TVD (ft)	Local N (ft)	Local E (ft)	DLS (°/100ft)	VS (ft)
Tie On	17.00	0.000	325.386	17.00	0.00	0.00	0.00	0.00
End of Tangent	500.00	0.000	325.386	500.00	0.00	0.00	0.00	0.00
End of Build	750.00	5.000	325.386	749.68	8.97	-6.19	2.00	-8.47
End of Tangent	5793.95	5.000	325.386	5774.44	370.77	-255.91	0.00	-349.88
End of 3D Arc	6467.60	70.000	180.749	6300.67	29.49	-280.21	11.00	-7.75
End of Tangent	6537.60	70.000	180.749	6324.61	-36.28	-281.07	0.00	57.90
End of 3D Arc	6719.42	90.000	180.749	6356.02	-214.42	-283.40	11.00	235.68
End of Tangent	10858.86	90.000	180.749	6356.00	-4353.50	-337.48	0.00	4366.56

## Targets

Name	MD (ft)	Local N (ft)	Local E (ft)	Grid East (US ft)	Grid North (US ft)	Latitude	Longitude
STATE NORTH PLATTE F-3-26HNB SECTION 26	1.00	-59.29	0.00	3303950.84	1381774.54	40°22'34.464"N	104°24'32.436"W
STATE NORTH PLATTE F-3-26HNB HARDLINE (460' SETBACKS)	6356.00	-59.29	0.00	3303950.84	1381774.54	40°22'34.464"N	104°24'32.436"W
STATE NORTH PLATTE 11-14-26HNB BHL From PMA Rev-1 (470'FSL & 655'FWL, SEC.26)	6356.00	-4353.50	-359.48	3303944.34	1377475.41	40°21'52.000"N	104°24'37.000"W
STATE NORTH PLATTE 11-14-26HNB BHL Rev-2 (470'FSL & 675'FWL, SEC.26)	10858.86	6356.00	-4353.50	3303866.24	1377475.68	40°21'52.000"N	104°24'36.795"W
STATE NORTH PLATTE 11-14-26HNB Target 1		6356.00	-131.15	-283.70	3303868.07	40°22'32.344"N	104°24'36.102"W
Ex-STATE #1-26 (500' Radius)	7075.00	-2811.81	3597.52	3307541.81	1375905.10	40°22'07.252"N	104°22'46.475"W



BGGM (1945.0 to 2014.0) Dip: 66.99° Field: 52832.8 nT  
Magnetic North is 8.45 degrees East of True North (at 7/16/2013)  
To correct azimuth from Magnetic to True add 8.45 degrees



# Planned Wellpath Report

STATE NORTH PLATTE 11-14-26HNB (REV-B.0) PWP  
Page 1 of 7



## REFERENCE WELLPATH IDENTIFICATION

Operator	BONANZA CREEK OIL COMPANY	Slot	SLOT#04 STATE NORTH PLATTE 11-14-26HNB (397'FNL & 956'FWL,SEC.26)
Area	COLORADO	Well	STATE NORTH PLATTE 11-14-26HNB
Field	WELD COUNTY	Wellbore	STATE NORTH PLATTE 11-14-26HNB PWB
Facility	SEC.26-T5N-R63W		

## REPORT SETUP INFORMATION

Projection System	NAD83 / Lambert Colorado SP, Northern Zone (501), US feet	Software System	WellArchitect® 4.0.0
North Reference	True	User	Guenaler
Scale	0.999959	Report Generated	8/8/2013 at 8:55:54 AM
Convergence at slot	n/a	Database/Source file	WA_Denver/STATE_NORTH_PLATTE_11-14-26HNB_PWB.xml

## WELLPATH LOCATION

	Local coordinates		Grid coordinates		Geographic coordinates	
	North[ft]	East[ft]	Easting[US ft]	Northing[US ft]	Latitude	Longitude
Slot Location	58.29	0.00	3303950.12	1381832.82	40°22'35.040"N	104°24'32.436"W
Facility Reference Pt			3303950.84	1381774.54	40°22'34.464"N	104°24'32.436"W
Field Reference Pt			3327718.19	1377782.99	40°21'52.020"N	104°19'26.040"W

## WELLPATH DATUM

Calculation method	Minimum curvature	CADE 22 (RKB) to Facility Vertical Datum	4583.00ft
Horizontal Reference Pt	Slot	CADE 22 (RKB) to Mean Sea Level	4583.00ft
Vertical Reference Pt	CADE 22 (RKB)	CADE 22 (RKB) to Mud Line at Slot (SLOT#04 STATE NORTH PLATTE 11-14-26HNB (397'FNL & 956'FWL,SEC.26))	4583.00ft
MD Reference Pt	CADE 22 (RKB)	Section Origin	N 0.00, E 0.00 ft
Field Vertical Reference	Mean Sea Level	Section Azimuth	184.43°



# Planned Wellpath Report

STATE NORTH PLATTE 11-14-26HNB (REV-B.0) PWP  
Page 2 of 7



REFERENCE WELLPATH IDENTIFICATION			
Operator	BONANZA CREEK OIL COMPANY	Slot	SLOT#04 STATE NORTH PLATTE 11-14-26HNB (397'FNL & 956'FWL,SEC.26)
Area	COLORADO	Well	STATE NORTH PLATTE 11-14-26HNB
Field	WELD COUNTY	Wellbore	STATE NORTH PLATTE 11-14-26HNB PWB
Facility	SEC.26-T5N-R63W		

WELLPATH DATA (118 stations) † = interpolated/extrapolated station										
MD [ft]	Inclination [°]	Azimuth [°]	TVD [ft]	Vert Sect [ft]	North [ft]	East [ft]	Latitude	Longitude	DLS [°/100ft]	Comments
0.00†	0.000	325.386	0.00	0.00	0.00	0.00	40°22'35.040"N	104°24'32.436"W	0.00	
17.00	0.000	325.386	17.00	0.00	0.00	0.00	40°22'35.040"N	104°24'32.436"W	0.00	Tie On
117.00†	0.000	325.386	117.00	0.00	0.00	0.00	40°22'35.040"N	104°24'32.436"W	0.00	
217.00†	0.000	325.386	217.00	0.00	0.00	0.00	40°22'35.040"N	104°24'32.436"W	0.00	
317.00†	0.000	325.386	317.00	0.00	0.00	0.00	40°22'35.040"N	104°24'32.436"W	0.00	
417.00†	0.000	325.386	417.00	0.00	0.00	0.00	40°22'35.040"N	104°24'32.436"W	0.00	
500.00	0.000	325.386	500.00	0.00	0.00	0.00	40°22'35.040"N	104°24'32.436"W	0.00	End of Tangent
517.00†	0.340	325.386	517.00	-0.04	0.04	-0.03	40°22'35.040"N	104°24'32.436"W	2.00	
617.00†	2.340	325.386	616.97	-1.86	1.97	-1.36	40°22'35.059"N	104°24'32.454"W	2.00	
717.00†	4.340	325.386	716.79	-6.38	6.76	-4.67	40°22'35.107"N	104°24'32.496"W	2.00	
750.00	5.000	325.386	749.68	-8.47	8.97	-6.19	40°22'35.129"N	104°24'32.516"W	2.00	End of Build
817.00†	5.000	325.386	816.43	-13.00	13.78	-9.51	40°22'35.176"N	104°24'32.559"W	0.00	
917.00†	5.000	325.386	916.05	-19.77	20.95	-14.46	40°22'35.247"N	104°24'32.623"W	0.00	
1017.00†	5.000	325.386	1015.67	-26.54	28.12	-19.41	40°22'35.318"N	104°24'32.687"W	0.00	
1117.00†	5.000	325.386	1115.29	-33.31	35.30	-24.36	40°22'35.389"N	104°24'32.751"W	0.00	
1217.00†	5.000	325.386	1214.91	-40.08	42.47	-29.31	40°22'35.460"N	104°24'32.815"W	0.00	
1317.00†	5.000	325.386	1314.53	-46.85	49.64	-34.26	40°22'35.531"N	104°24'32.879"W	0.00	
1417.00†	5.000	325.386	1414.14	-53.61	56.82	-39.21	40°22'35.601"N	104°24'32.943"W	0.00	
1517.00†	5.000	325.386	1513.76	-60.38	63.99	-44.17	40°22'35.672"N	104°24'33.007"W	0.00	
1617.00†	5.000	325.386	1613.38	-67.15	71.16	-49.12	40°22'35.743"N	104°24'33.071"W	0.00	
1717.00†	5.000	325.386	1713.00	-73.92	78.33	-54.07	40°22'35.814"N	104°24'33.135"W	0.00	
1817.00†	5.000	325.386	1812.62	-80.69	85.51	-59.02	40°22'35.885"N	104°24'33.199"W	0.00	
1917.00†	5.000	325.386	1912.24	-87.46	92.68	-63.97	40°22'35.956"N	104°24'33.263"W	0.00	
2017.00†	5.000	325.386	2011.86	-94.23	99.85	-68.92	40°22'36.027"N	104°24'33.327"W	0.00	
2117.00†	5.000	325.386	2111.48	-101.00	107.03	-73.87	40°22'36.098"N	104°24'33.390"W	0.00	
2217.00†	5.000	325.386	2211.10	-107.76	114.20	-78.82	40°22'36.168"N	104°24'33.454"W	0.00	
2317.00†	5.000	325.386	2310.72	-114.53	121.37	-83.77	40°22'36.239"N	104°24'33.518"W	0.00	
2417.00†	5.000	325.386	2410.34	-121.30	128.54	-88.72	40°22'36.310"N	104°24'33.582"W	0.00	
2517.00†	5.000	325.386	2509.96	-128.07	135.72	-93.67	40°22'36.381"N	104°24'33.646"W	0.00	
2617.00†	5.000	325.386	2609.58	-134.84	142.89	-98.62	40°22'36.452"N	104°24'33.710"W	0.00	



# Planned Wellpath Report

STATE NORTH PLATTE 11-14-26HNB (REV-B.0) PWP  
Page 3 of 7



REFERENCE WELLPATH IDENTIFICATION			
Operator	BONANZA CREEK OIL COMPANY	Slot	SLOT#04 STATE NORTH PLATTE 11-14-26HNB (397'FNL & 956'FWL,SEC.26)
Area	COLORADO	Well	STATE NORTH PLATTE 11-14-26HNB
Field	WELD COUNTY	Wellbore	STATE NORTH PLATTE 11-14-26HNB PWB
Facility	SEC.26-T5N-R63W		

WELLPATH DATA (118 stations) † = interpolated/extrapolated station										Comments
MD [ft]	Inclination [°]	Azimuth [°]	TVD [ft]	Vert Sect [ft]	North [ft]	East [ft]	Latitude	Longitude	DLS [°/100ft]	
2717.00†	5.000	325.386	2709.20	-141.61	150.06	-103.58	40°22'36.523"N	104°24'33.774"W	0.00	
2817.00†	5.000	325.386	2808.82	-148.38	157.24	-108.53	40°22'36.594"N	104°24'33.838"W	0.00	
2917.00†	5.000	325.386	2908.44	-155.15	164.41	-113.48	40°22'36.665"N	104°24'33.902"W	0.00	
3017.00†	5.000	325.386	3008.06	-161.92	171.58	-118.43	40°22'36.736"N	104°24'33.966"W	0.00	
3117.00†	5.000	325.386	3107.68	-168.68	178.75	-123.38	40°22'36.806"N	104°24'34.030"W	0.00	
3217.00†	5.000	325.386	3207.30	-175.45	185.93	-128.33	40°22'36.877"N	104°24'34.094"W	0.00	
3317.00†	5.000	325.386	3306.91	-182.22	193.10	-133.28	40°22'36.948"N	104°24'34.158"W	0.00	
3417.00†	5.000	325.386	3406.53	-188.99	200.27	-138.23	40°22'37.019"N	104°24'34.222"W	0.00	
3517.00†	5.000	325.386	3506.15	-195.76	207.45	-143.18	40°22'37.090"N	104°24'34.286"W	0.00	
3617.00†	5.000	325.386	3605.77	-202.53	214.62	-148.13	40°22'37.161"N	104°24'34.350"W	0.00	
3717.00†	5.000	325.386	3705.39	-209.30	221.79	-153.08	40°22'37.232"N	104°24'34.414"W	0.00	
3817.00†	5.000	325.386	3805.01	-216.07	228.96	-158.03	40°22'37.303"N	104°24'34.478"W	0.00	
3917.00†	5.000	325.386	3904.63	-222.83	236.14	-162.99	40°22'37.373"N	104°24'34.542"W	0.00	
4017.00†	5.000	325.386	4004.25	-229.60	243.31	-167.94	40°22'37.444"N	104°24'34.606"W	0.00	
4117.00†	5.000	325.386	4103.87	-236.37	250.48	-172.89	40°22'37.515"N	104°24'34.670"W	0.00	
4217.00†	5.000	325.386	4203.49	-243.14	257.66	-177.84	40°22'37.586"N	104°24'34.734"W	0.00	
4317.00†	5.000	325.386	4303.11	-249.91	264.83	-182.79	40°22'37.657"N	104°24'34.798"W	0.00	
4417.00†	5.000	325.386	4402.73	-256.68	272.00	-187.74	40°22'37.728"N	104°24'34.862"W	0.00	
4517.00†	5.000	325.386	4502.35	-263.45	279.17	-192.69	40°22'37.799"N	104°24'34.926"W	0.00	
4617.00†	5.000	325.386	4601.97	-270.22	286.35	-197.64	40°22'37.870"N	104°24'34.990"W	0.00	
4717.00†	5.000	325.386	4701.59	-276.98	293.52	-202.59	40°22'37.940"N	104°24'35.054"W	0.00	
4817.00†	5.000	325.386	4801.21	-283.75	300.69	-207.54	40°22'38.011"N	104°24'35.118"W	0.00	
4917.00†	5.000	325.386	4900.83	-290.52	307.87	-212.49	40°22'38.082"N	104°24'35.182"W	0.00	
5017.00†	5.000	325.386	5000.45	-297.29	315.04	-217.44	40°22'38.153"N	104°24'35.246"W	0.00	
5117.00†	5.000	325.386	5100.07	-304.06	322.21	-222.40	40°22'38.224"N	104°24'35.310"W	0.00	
5217.00†	5.000	325.386	5199.68	-310.83	329.39	-227.35	40°22'38.295"N	104°24'35.374"W	0.00	
5317.00†	5.000	325.386	5299.30	-317.60	336.56	-232.30	40°22'38.366"N	104°24'35.438"W	0.00	
5417.00†	5.000	325.386	5398.92	-324.37	343.73	-237.25	40°22'38.437"N	104°24'35.501"W	0.00	
5517.00†	5.000	325.386	5498.54	-331.14	350.90	-242.20	40°22'38.508"N	104°24'35.565"W	0.00	
5617.00†	5.000	325.386	5598.16	-337.90	358.08	-247.15	40°22'38.578"N	104°24'35.629"W	0.00	



# Planned Wellpath Report

STATE NORTH PLATTE 11-14-26HNB (REV-B.0) PWP

Page 4 of 7



REFERENCE WELLPATH IDENTIFICATION			
Operator	BONANZA CREEK OIL COMPANY	Slot	SLOT#04 STATE NORTH PLATTE 11-14-26HNB (397'FNL & 956'FWL,SEC.26)
Area	COLORADO	Well	STATE NORTH PLATTE 11-14-26HNB
Field	WELD COUNTY	Wellbore	STATE NORTH PLATTE 11-14-26HNB PWB
Facility	SEC.26-T5N-R63W		

WELLPATH DATA (118 stations) † = interpolated/extrapolated station										
MD [ft]	Inclination [°]	Azimuth [°]	TVD [ft]	Vert Sect [ft]	North [ft]	East [ft]	Latitude	Longitude	DLS [°/100ft]	Comments
5717.00†	5.000	325.386	5697.78	-344.67	365.25	-252.10	40°22'38.649"N	104°24'35.693"W	0.00	
5793.95	5.000	325.386	5774.44	-349.88	370.77	-255.91	40°22'38.704"N	104°24'35.743"W	0.00	End of Tangent
5817.00†	3.242	299.134	5797.43	-350.93	371.91	-257.05	40°22'38.715"N	104°24'35.757"W	11.00	
5917.00†	9.820	196.284	5896.92	-343.75	365.08	-261.93	40°22'38.648"N	104°24'35.820"W	11.00	
6017.00†	20.595	187.266	5993.29	-317.76	339.37	-266.56	40°22'38.394"N	104°24'35.880"W	11.00	
6117.00†	31.522	184.335	6082.99	-273.91	295.73	-270.77	40°22'37.962"N	104°24'35.935"W	11.00	
6217.00†	42.485	182.808	6162.73	-213.83	235.75	-274.41	40°22'37.370"N	104°24'35.982"W	11.00	
6317.00†	53.460	181.815	6229.58	-139.72	161.64	-277.35	40°22'36.637"N	104°24'36.020"W	11.00	
6417.00†	64.442	181.072	6281.08	-54.30	76.12	-279.47	40°22'35.792"N	104°24'36.047"W	11.00	
6467.60	70.000	180.749	6300.67	-7.75	29.49	-280.21	40°22'35.331"N	104°24'36.057"W	11.00	End of 3D Arc
6502.60†	70.000	180.749	6312.64	25.07	-3.39	-280.64	40°22'35.006"N	104°24'36.062"W	0.00	4.5" Hanging Liner
6517.00†	70.000	180.749	6317.56	38.58	-16.92	-280.82	40°22'34.873"N	104°24'36.064"W	0.00	
6537.60	70.000	180.749	6324.61	57.90	-36.28	-281.07	40°22'34.681"N	104°24'36.068"W	0.00	End of Tangent
6617.00†	78.734	180.749	6345.98	134.12	-112.66	-282.07	40°22'33.927"N	104°24'36.081"W	11.00	
6717.00†	89.734	180.749	6356.01	233.26	-211.99	-283.37	40°22'32.945"N	104°24'36.097"W	11.00	
6719.42	90.000	180.749	6356.02	235.68	-214.42	-283.40	40°22'32.921"N	104°24'36.098"W	11.00	End of 3D Arc
6817.00†	90.000	180.749	6356.02	333.05	-311.99	-284.67	40°22'31.957"N	104°24'36.114"W	0.00	
6917.00†	90.000	180.749	6356.02	432.85	-411.98	-285.98	40°22'30.969"N	104°24'36.131"W	0.00	
7017.00†	90.000	180.749	6356.02	532.64	-511.97	-287.28	40°22'29.981"N	104°24'36.148"W	0.00	
7117.00†	90.000	180.749	6356.02	632.43	-611.96	-288.59	40°22'28.993"N	104°24'36.165"W	0.00	
7217.00†	90.000	180.749	6356.02	732.23	-711.95	-289.90	40°22'28.005"N	104°24'36.182"W	0.00	
7317.00†	90.000	180.749	6356.02	832.02	-811.94	-291.20	40°22'27.017"N	104°24'36.198"W	0.00	
7417.00†	90.000	180.749	6356.02	931.81	-911.93	-292.51	40°22'26.029"N	104°24'36.215"W	0.00	
7517.00†	90.000	180.749	6356.02	1031.61	-1011.93	-293.82	40°22'25.040"N	104°24'36.232"W	0.00	
7617.00†	90.000	180.749	6356.01	1131.40	-1111.92	-295.12	40°22'24.052"N	104°24'36.249"W	0.00	
7717.00†	90.000	180.749	6356.01	1231.19	-1211.91	-296.43	40°22'23.064"N	104°24'36.266"W	0.00	
7817.00†	90.000	180.749	6356.01	1330.99	-1311.90	-297.74	40°22'22.076"N	104°24'36.283"W	0.00	
7917.00†	90.000	180.749	6356.01	1430.78	-1411.89	-299.04	40°22'21.088"N	104°24'36.300"W	0.00	
8017.00†	90.000	180.749	6356.01	1530.57	-1511.88	-300.35	40°22'20.100"N	104°24'36.317"W	0.00	
8117.00†	90.000	180.749	6356.01	1630.37	-1611.87	-301.66	40°22'19.112"N	104°24'36.333"W	0.00	



# Planned Wellpath Report

STATE NORTH PLATTE 11-14-26HNB (REV-B.0) PWP  
Page 5 of 7



REFERENCE WELLPATH IDENTIFICATION			
Operator	BONANZA CREEK OIL COMPANY	Slot	SLOT#04 STATE NORTH PLATTE 11-14-26HNB (397'FNL & 956'FWL,SEC.26)
Area	COLORADO	Well	STATE NORTH PLATTE 11-14-26HNB
Field	WELD COUNTY	Wellbore	STATE NORTH PLATTE 11-14-26HNB PWB
Facility	SEC.26-T5N-R63W		

WELLPATH DATA (118 stations) † = interpolated/extrapolated station										
MD [ft]	Inclination [°]	Azimuth [°]	TVD [ft]	Vert Sect [ft]	North [ft]	East [ft]	Latitude	Longitude	DLS [°/100ft]	Comments
8217.00†	90.000	180.749	6356.01	1730.16	-1711.87	-302.96	40°22'18.124"N	104°24'36.350"W	0.00	
8317.00†	90.000	180.749	6356.01	1829.95	-1811.86	-304.27	40°22'17.136"N	104°24'36.367"W	0.00	
8417.00†	90.000	180.749	6356.01	1929.75	-1911.85	-305.58	40°22'16.148"N	104°24'36.384"W	0.00	
8517.00†	90.000	180.749	6356.01	2029.54	-2011.84	-306.88	40°22'15.160"N	104°24'36.401"W	0.00	
8617.00†	90.000	180.749	6356.01	2129.33	-2111.83	-308.19	40°22'14.172"N	104°24'36.418"W	0.00	
8717.00†	90.000	180.749	6356.01	2229.13	-2211.82	-309.50	40°22'13.183"N	104°24'36.435"W	0.00	
8817.00†	90.000	180.749	6356.01	2328.92	-2311.81	-310.80	40°22'12.195"N	104°24'36.451"W	0.00	
8917.00†	90.000	180.749	6356.01	2428.71	-2411.81	-312.11	40°22'11.207"N	104°24'36.468"W	0.00	
9017.00†	90.000	180.749	6356.01	2528.51	-2511.80	-313.42	40°22'10.219"N	104°24'36.485"W	0.00	
9117.00†	90.000	180.749	6356.01	2628.30	-2611.79	-314.72	40°22'09.231"N	104°24'36.502"W	0.00	
9217.00†	90.000	180.749	6356.01	2728.09	-2711.78	-316.03	40°22'08.243"N	104°24'36.519"W	0.00	
9317.00†	90.000	180.749	6356.01	2827.89	-2811.77	-317.34	40°22'07.255"N	104°24'36.536"W	0.00	
9417.00†	90.000	180.749	6356.01	2927.68	-2911.76	-318.64	40°22'06.267"N	104°24'36.553"W	0.00	
9517.00†	90.000	180.749	6356.01	3027.47	-3011.76	-319.95	40°22'05.279"N	104°24'36.570"W	0.00	
9617.00†	90.000	180.749	6356.01	3127.27	-3111.75	-321.25	40°22'04.291"N	104°24'36.586"W	0.00	
9717.00†	90.000	180.749	6356.01	3227.06	-3211.74	-322.56	40°22'03.303"N	104°24'36.603"W	0.00	
9817.00†	90.000	180.749	6356.00	3326.85	-3311.73	-323.87	40°22'02.315"N	104°24'36.620"W	0.00	
9917.00†	90.000	180.749	6356.00	3426.65	-3411.72	-325.17	40°22'01.326"N	104°24'36.637"W	0.00	
10017.00†	90.000	180.749	6356.00	3526.44	-3511.71	-326.48	40°22'00.338"N	104°24'36.654"W	0.00	
10117.00†	90.000	180.749	6356.00	3626.23	-3611.70	-327.79	40°21'59.350"N	104°24'36.671"W	0.00	
10217.00†	90.000	180.749	6356.00	3726.03	-3711.70	-329.09	40°21'58.362"N	104°24'36.688"W	0.00	
10317.00†	90.000	180.749	6356.00	3825.82	-3811.69	-330.40	40°21'57.374"N	104°24'36.704"W	0.00	
10417.00†	90.000	180.749	6356.00	3925.61	-3911.68	-331.71	40°21'56.386"N	104°24'36.721"W	0.00	
10517.00†	90.000	180.749	6356.00	4025.41	-4011.67	-333.01	40°21'55.398"N	104°24'36.738"W	0.00	
10617.00†	90.000	180.749	6356.00	4125.20	-4111.66	-334.32	40°21'54.410"N	104°24'36.755"W	0.00	
10717.00†	90.000	180.749	6356.00	4224.99	-4211.65	-335.63	40°21'53.422"N	104°24'36.772"W	0.00	
10817.00†	90.000	180.749	6356.00	4324.79	-4311.64	-336.93	40°21'52.434"N	104°24'36.789"W	0.00	
10858.86	90.000	180.749	6356.00 <sup>1</sup>	4366.56	-4353.50	-337.48	40°21'52.020"N	104°24'36.796"W	0.00	End of Tangent





# Planned Wellpath Report

STATE NORTH PLATTE 11-14-26HNB (REV-B.0) PWP

Page 6 of 7



REFERENCE WELLPATH IDENTIFICATION			
Operator	BONANZA CREEK OIL COMPANY	Slot	SLOT#04 STATE NORTH PLATTE 11-14-26HNB (397'FNL & 956'FWL,SEC.26)
Area	COLORADO	Well	STATE NORTH PLATTE 11-14-26HNB
Field	WELD COUNTY	Wellbore	STATE NORTH PLATTE 11-14-26HNB PWB
Facility	SEC.26-T5N-R63W		

HOLE & CASING SECTIONS -									
Ref Wellbore: STATE NORTH PLATTE 11-14-26HNB PWB					Ref Wellpath: STATE NORTH PLATTE 11-14-26HNB (REV-B.0) PWP				
String/Diameter	Start MD [ft]	End MD [ft]	Interval [ft]	Start TVD [ft]	End TVD [ft]	Start N/S [ft]	Start E/W [ft]	End N/S [ft]	End E/W [ft]
7in Casing Intermediate	17.00	6719.42	6702.42	17.00	6356.02	0.00	0.00	-214.41	-283.40
6.125in Open Hole	6719.42	10858.86	4139.44	6356.02	6356.00	-214.41	-283.40	-4353.50	-337.48
4.5in Casing Production	17.00	10858.84	10841.84	17.00	6356.00	0.00	0.00	-4353.48	-337.48

TARGETS									
Name	MD [ft]	TVD [ft]	North [ft]	East [ft]	Grid East [US ft]	Grid North [US ft]	Latitude	Longitude	Shape
STATE NORTH PLATTE F-J-26HNB SECTION 26		1.00	-58.29	0.00	3303950.84	1381774.54	40°22'34.464"N	104°24'32.436"W	polygon
STATE NORTH PLATTE F-J-26HNB HARDLINE (460' SETBACKS)		6353.00	-58.29	0.00	3303950.84	1381774.54	40°22'34.464"N	104°24'32.436"W	polygon
STATE NORTH PLATTE 11-14-26HNB BHL From Plat Rev-1 (470'FSL & 653'FWL,SEC.26)		6356.00	-4353.50	-359.48	3303644.24	1377475.41	40°21'52.020"N	104°24'37.080"W	point
1) STATE NORTH PLATTE 11-14-26HNB BHL Rev-2 (470'FSL & 675'FWL,SEC.26)	10858.86	6356.00	-4353.50	-337.48	3303666.24	1377475.68	40°21'52.020"N	104°24'36.796"W	point
STATE NORTH PLATTE 11-14-26HNB Target 1		6356.00	-131.15	-283.70	3303668.07	1381698.19	40°22'33.744"N	104°24'36.102"W	point
Ex.STATE #1-26 (500' Radius)		7076.00	-2811.81	3557.52	3307541.81	1379065.10	40°22'07.252"N	104°23'46.475"W	circle

SURVEY PROGRAM -				
Ref Wellbore: STATE NORTH PLATTE 11-14-26HNB PWB		Ref Wellpath: STATE NORTH PLATTE 11-14-26HNB (REV-B.0) PWP		
Start MD [ft]	End MD [ft]	Positional Uncertainty Model	Log Name/Comment	Wellbore
17.00	10858.86	NaviTrak (Standard)		STATE NORTH PLATTE 11-14-26HNB PWB



# Planned Wellpath Report

STATE NORTH PLATTE 11-14-26HNB (REV-B.0) PWP

Page 7 of 7



REFERENCE WELLPATH IDENTIFICATION			
Operator	BONANZA CREEK OIL COMPANY	Slot	SLOT#04 STATE NORTH PLATTE 11-14-26HNB (397'FNL & 956'FWL,SEC.26)
Area	COLORADO	Well	STATE NORTH PLATTE 11-14-26HNB
Field	WELD COUNTY	Wellbore	STATE NORTH PLATTE 11-14-26HNB PWB
Facility	SEC.26-T5N-R63W		

WELLPATH COMMENTS				
MD [ft]	Inclination [°]	Azimuth [°]	TVD [ft]	Comment
6502.60	70.000	180.749	6312.64	4.5" Hanging Liner

DESIGN COMMENTS				
MD [ft]	Inclination [°]	Azimuth [°]	TVD [ft]	Comment
17.00	0.000	325.386	17.00	Tie On
500.00	0.000	325.386	500.00	End of Tangent
750.00	5.000	325.386	749.68	End of Build
5793.95	5.000	325.386	5774.44	End of Tangent
6467.60	70.000	180.749	6300.67	End of 3D Arc
6537.60	70.000	180.749	6324.61	End of Tangent
6719.42	90.000	180.749	6356.02	End of 3D Arc
10858.86	90.000	180.749	6356.00	End of Tangent