

21 August 2012

Colorado Oil and Gas Conservation
Commission
The Chancery Building
1120 Lincoln Street, Suite 801
Denver, CO 80203



410 17th Street, Suite 1400
Denver, CO 80202
(720) 440-6100 phone
(720) 305-0804 fax

BonanzaCrk.com

Attn: Matthew Lepore, Director

Re: Notice of 318A(I).a(4).D Well Proposal
State North Platte 11-14-26HNB
SHL: NWNW (397' FNL, 956' FWL) Sec 26-5N-63W, 6TH PM
Top of Production: NWNW (631' FNL, 675' FWL) Sec 26-5N-63W, 6TH PM
Bottom of Production: SWSW (470' FSL, 675' FWL) Sec 26-5N-63W, 6TH PM
Weld County, Colorado

Mr. Director:

Bonanza Creek Energy, Inc. (Bonanza) intends to permit, drill and operate the referenced Niobrara Horizontal Well. As defined by Colorado Oil and Gas Conservation Commission (COGCC) Rule 318A(I).a.(4)D., Bonanza proposes the following wellbore spacing unit:

W/2 W/2 Section 26-T5N-R63W, 6TH PM, Weld County, CO – 160 Acres

Bonanza is the sole mineral lease holder in the proposed spacing unit, and no mineral owner notifications were required.

Bonanza respectfully requests that you review the enclosed wellbore spacing unit documentation and approve the referenced APD.

Please do not hesitate to call or email me, directly, at (720) 440-6112 or KCaplan@BonanzaCRK.com, should you have any questions pertaining to this matter.

Thank you for your cooperation.

Sincerely,

BONANZA CREEK ENERGY, INC.
BONANZA CREEK ENERGY OPERATING COMPANY, LLC.

Keith S. Caplan
Sr. Regulatory Specialist

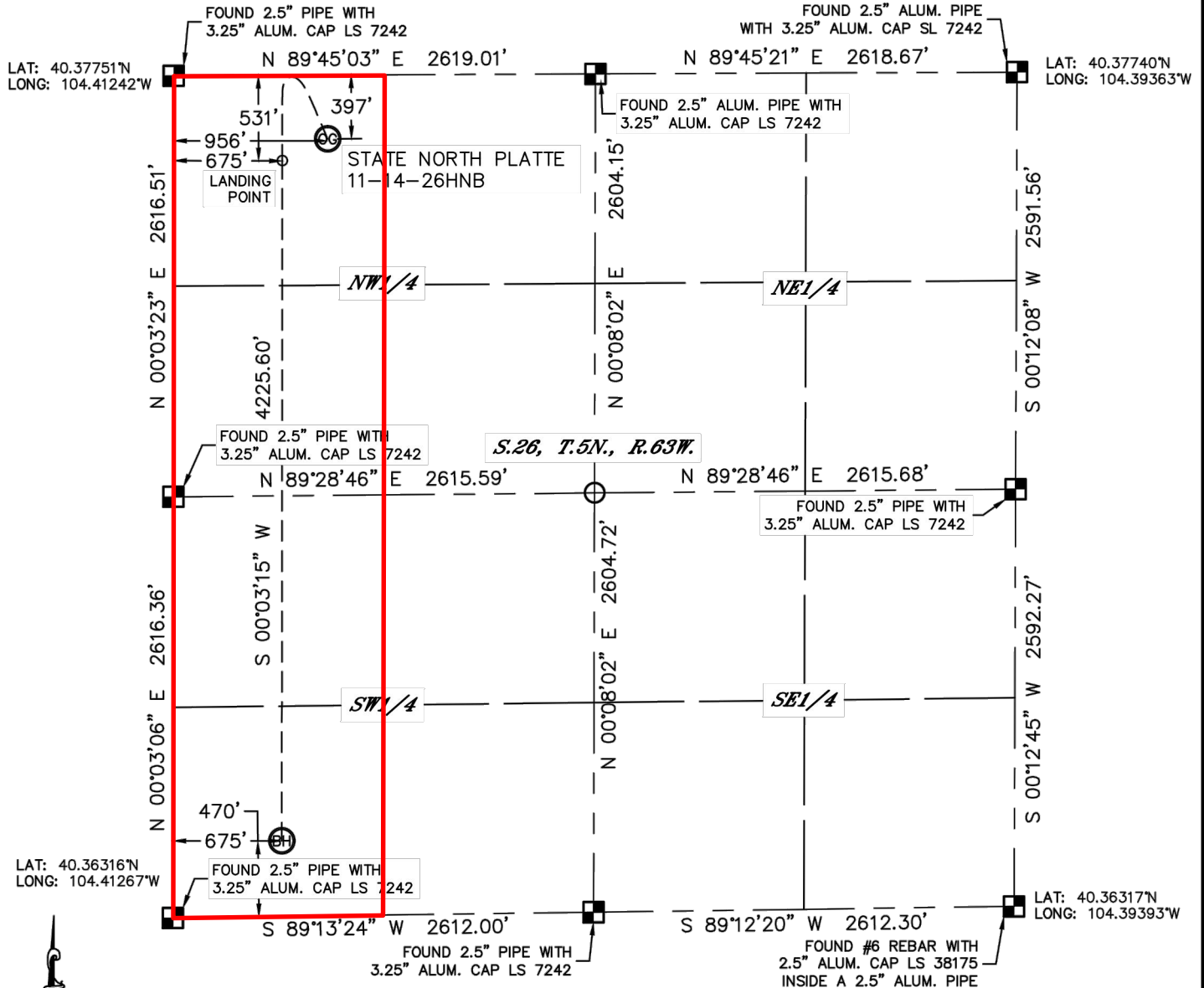


Lat40°, Inc. 1635 Foxtrail Drive, Suite 325 Loveland, CO 970-776-3321

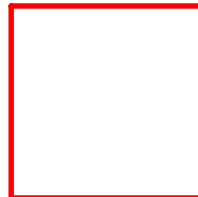
WELL LOCATION CERTIFICATE

THIS MAP DOES NOT REPRESENT A BOUNDARY SURVEY

SECTION: 26
TOWNSHIP: 5N
RANGE: 63W



In accordance with a request from Michael Meagher with BONANZA CREEK ENERGY, INC.
Lat40°, Inc. has determined the surface location of the STATE NORTH PLATTE 11-14-26HNB to be 397'
from the NORTH line and 956' from the WEST line and the bottom hole to be 470' from the SOUTH line



Wellbore Spacing Unit Outline



Wellbore Spacing Unit Map

21 August 2013 ksc

State North Platte 11-14-26HNB
W2/W2 Sec 06 T5N R63W 6th PM
Weld County, Colorado