



Scale 1:240 (5"=100') Imperial
Measured Depth Log

Well Name: Crowder 15N-18HZ
Location: Weld County, CO
License Number: 05-123-36721
Spud Date: 05/02/2013
Surface Coordinates:

Region: DJ Basin
Drilling Completed:

Bottom Hole
Coordinates:
Ground Elevation (ft): 4958' K.B. Elevation (ft): 4983'
Logged Interval (ft): 6700' To: 7691' Total Depth (ft):
Formation: Niobrara C
Type of Drilling Fluid: Water Based Mud

Printed by MUD.LOG from WellSight Systems 1-800-447-1534 www.WellSight.com

OPERATOR

Company: Anadarko Petroleum Corporation
Address: Granite Tower
1099 18th Street, #1800
Denver, CO 80202

GEOLOGIST

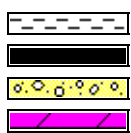
Name: Justin Robbins / Justin Graf
Company: Great Divide Consulting, Inc
Address: P.O. Box 630263
Highlands Ranch, CO 80163

Comments

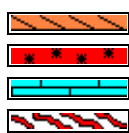
ROCK TYPES



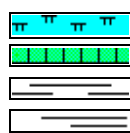
Anhy
Bent
Brec
Cht



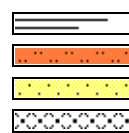
Clyst
Coal
Congl
Dol



Gyp
Igne
Lmst
Meta



Mrlst
Salt
Shale
Shcol



Shgy
Sltst
Ss
Till

ACCESSORIES

MINERAL

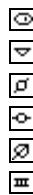
Anhy
Arggrn
Arg
Bent
Bit
Brecfrag
Calc
Carb
Chtdk
Chltt
Dol
Feldspar
Ferrpel
Ferr
Glau



Gyp
Hvymin
Kaol
Marl
Minxl
Nodule
Phos
Pyr
Salt
Sandy
Silt
Sil
Sulphur
Tuff

FOSSIL

Algae
Amph
Belm
Bioclst
Brach
Bryozoa
Cephal
Coral
Crin
Echin
Fish
Foram
Fossil
Gastro
Oolite



Ostra
Pelec
Pellet
Pisolite
Plant
Strom

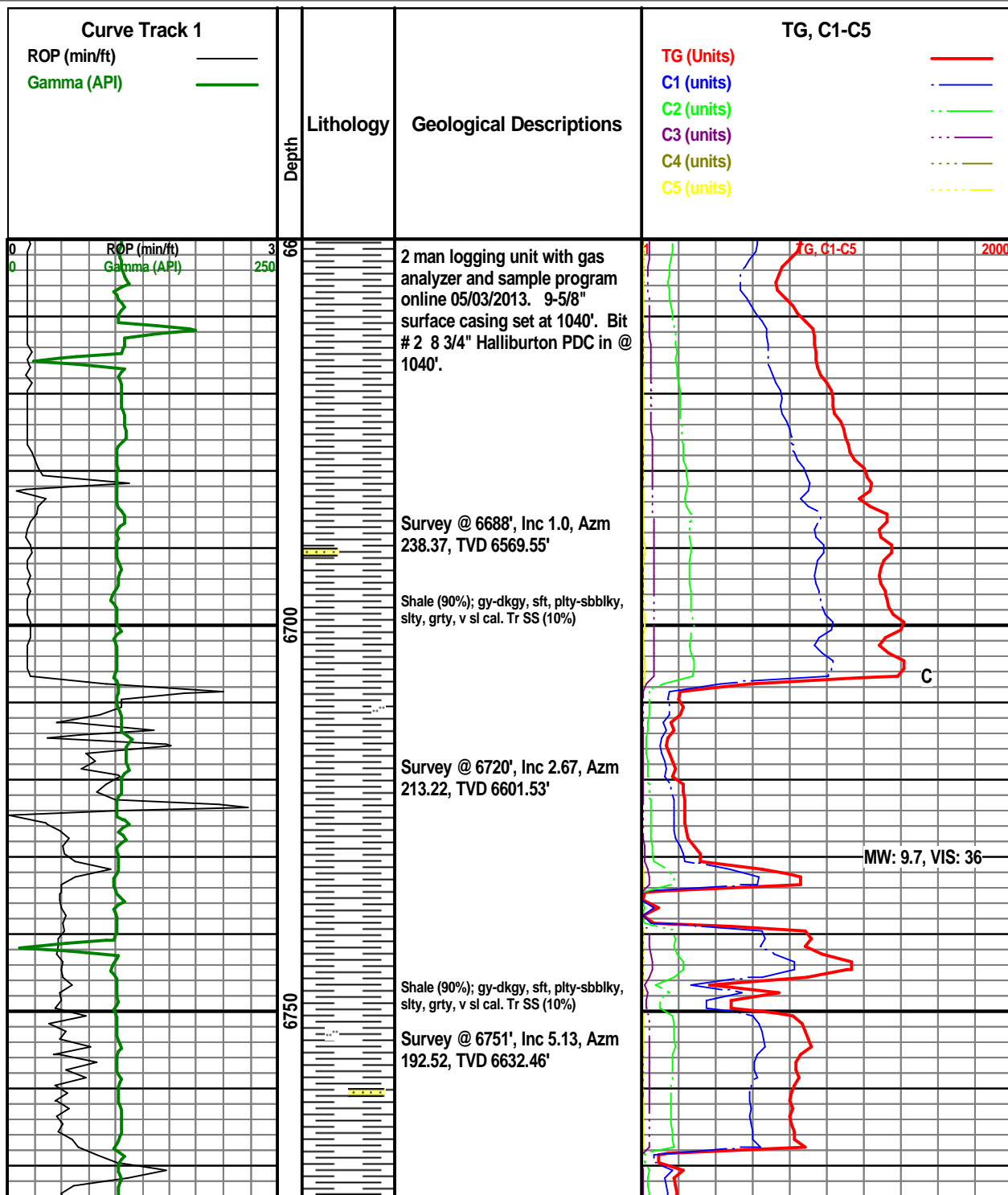
STRINGER

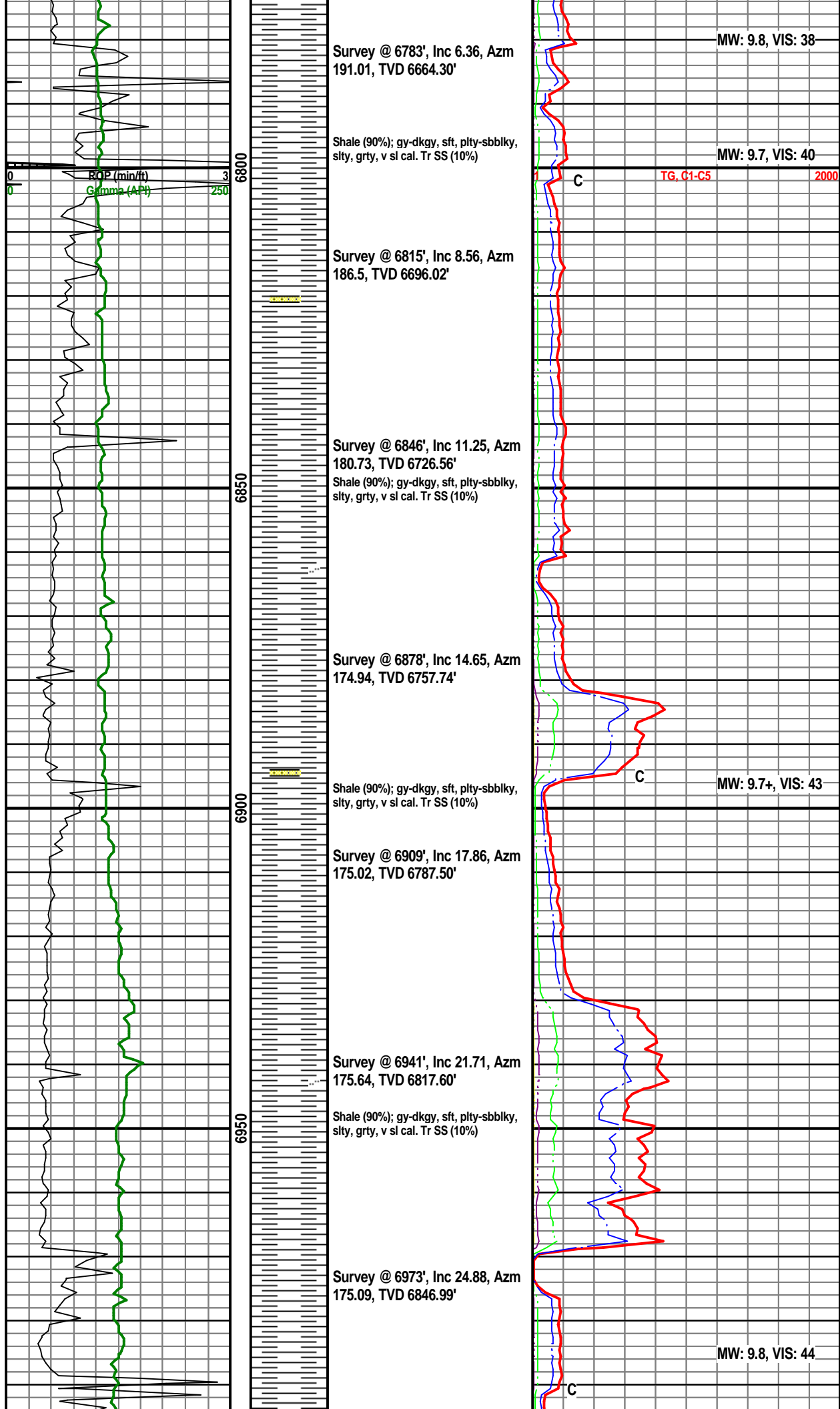
Anhy
Arg
Bent
Coal
Dol
Gyp
Ls
Mrst

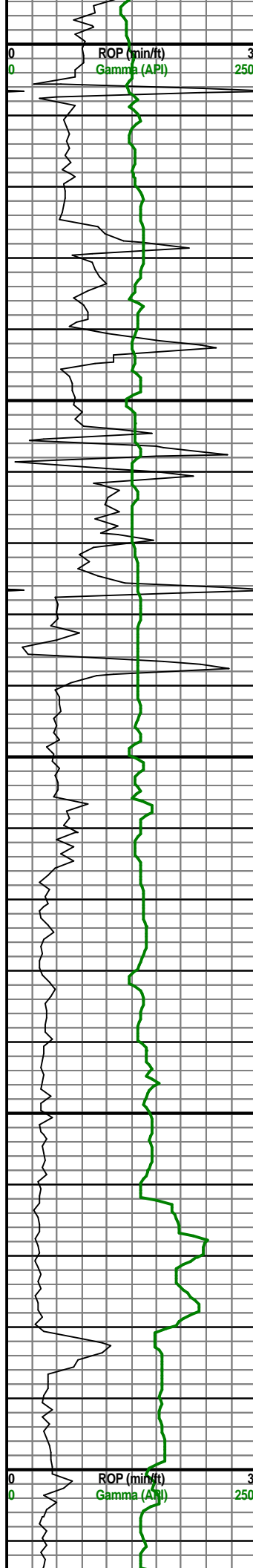
Sltstrg
Ssstrg

TEXTURE

Boundst
Chalky
Cryxln
Earthy
Finexln
Grainst
Lithogr
Microxln
Mudst
Packst
Wackest







7000
7050
7100
7150
7200

Shale (90%); gy-dkgy, sft, plty-sbblky, slty, grty, v sl cal. Tr SS (10%)

Survey @ 7004', Inc 28.07, Azm 175.58, TVD 6874.74'

Survey @ 7036', Inc 31.38, Azm 175.57, TVD 6902.52'

Shale (95%); gy-dkgy, sft, plty-sbblky, slty, grty, v sl cal. Tr SS (5%)

Survey @ 7068', Inc 34.17, Azm 176.29, TVD 6929.43'

Survey @ 7099', Inc 36.56, Azm 174.82, TVD 6954.73'

Shale (95%); gy-dkgy, sft, plty-sbblky, slty, grty, v sl cal. Tr SS (5%)

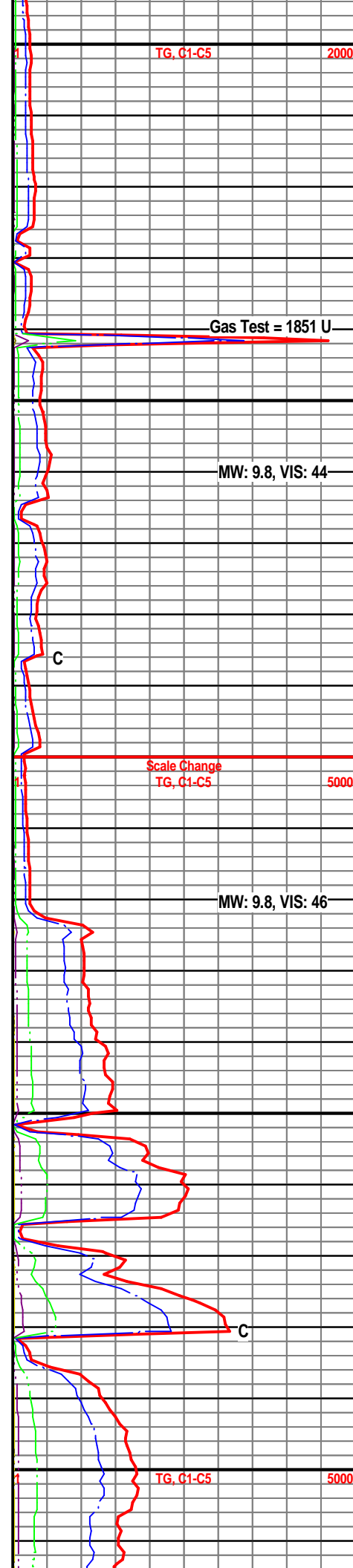
Survey @ 7131', Inc 40.8, Azm 174.98, TVD 6979.73'

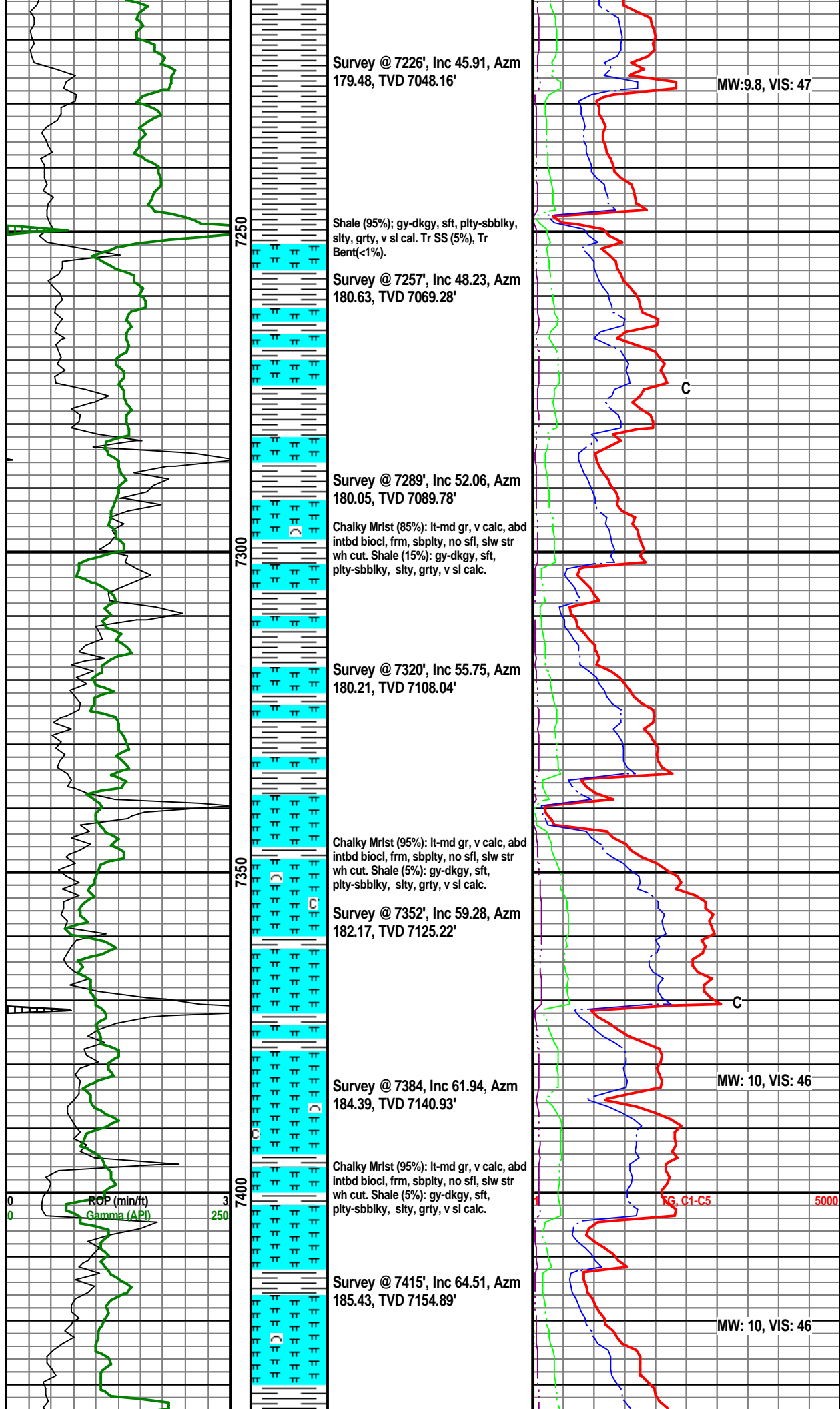
Shale (95%); gy-dkgy, sft, plty-sbblky, slty, grty, v sl cal. Tr SS (5%)

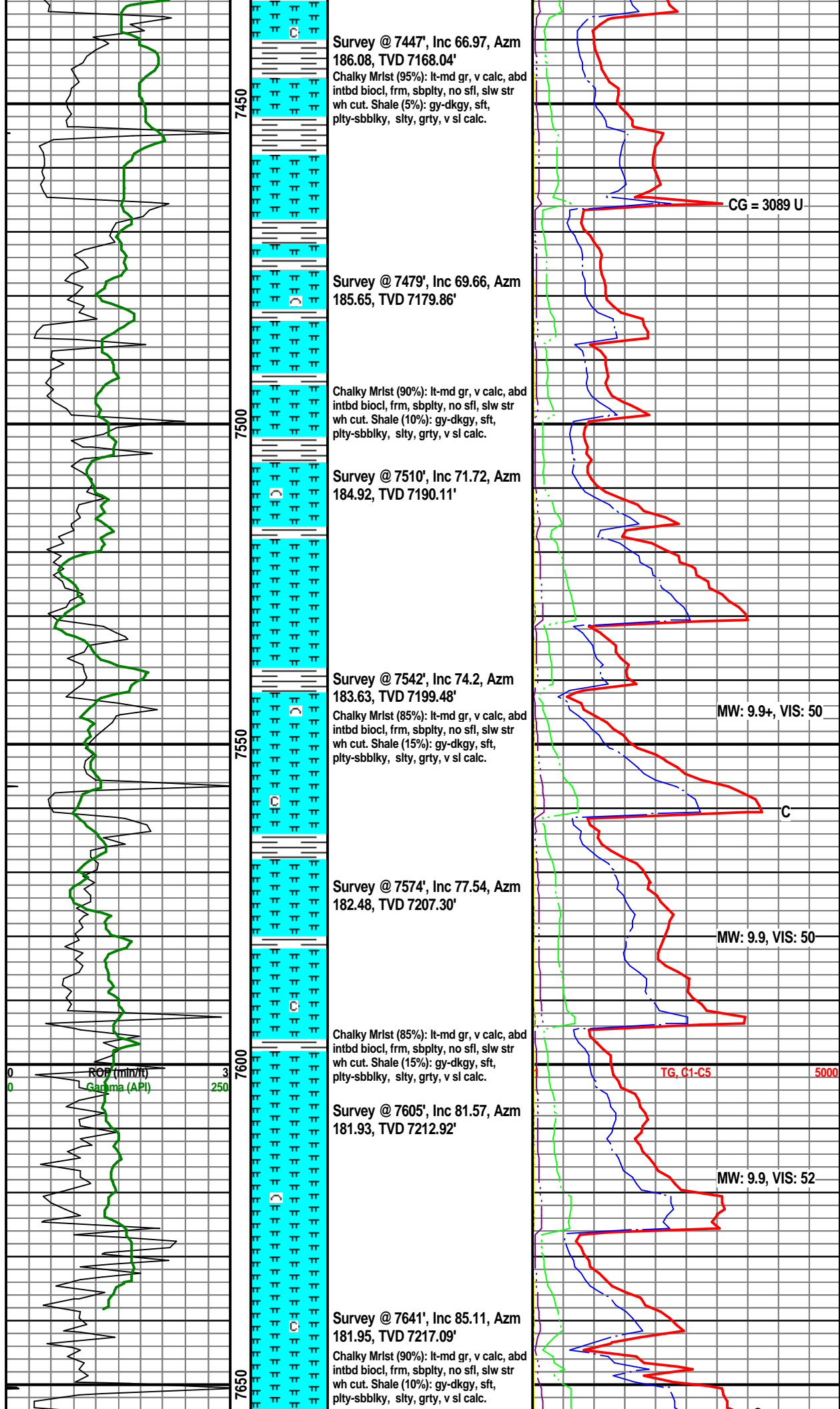
Survey @ 7162', Inc 43.53, Azm 176.09, TVD 7002.66'

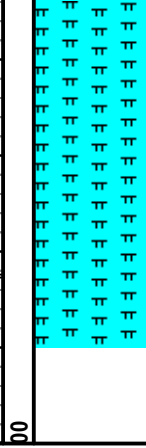
Survey @ 7194', Inc 45.91, Azm 179.48, TVD 7048.16'

Shale (95%); gy-dkgy, sft, plty-sbblky, slty, grty, v sl cal. Tr SS (5%), Tr Bent(<1%).

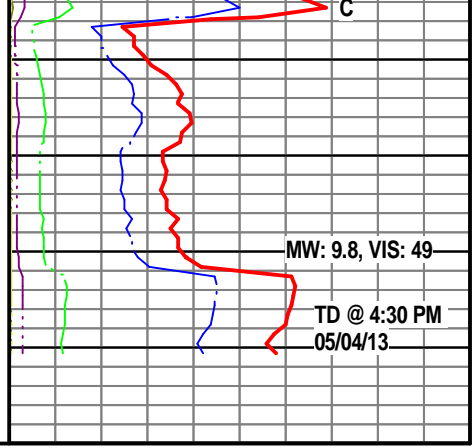








Proj. to bit @ 7691', Inc 89.52,
Azm 182.0, TVD 7219.46'



MW: 9.8, VIS: 49

TD @ 4:30 PM
05/04/13