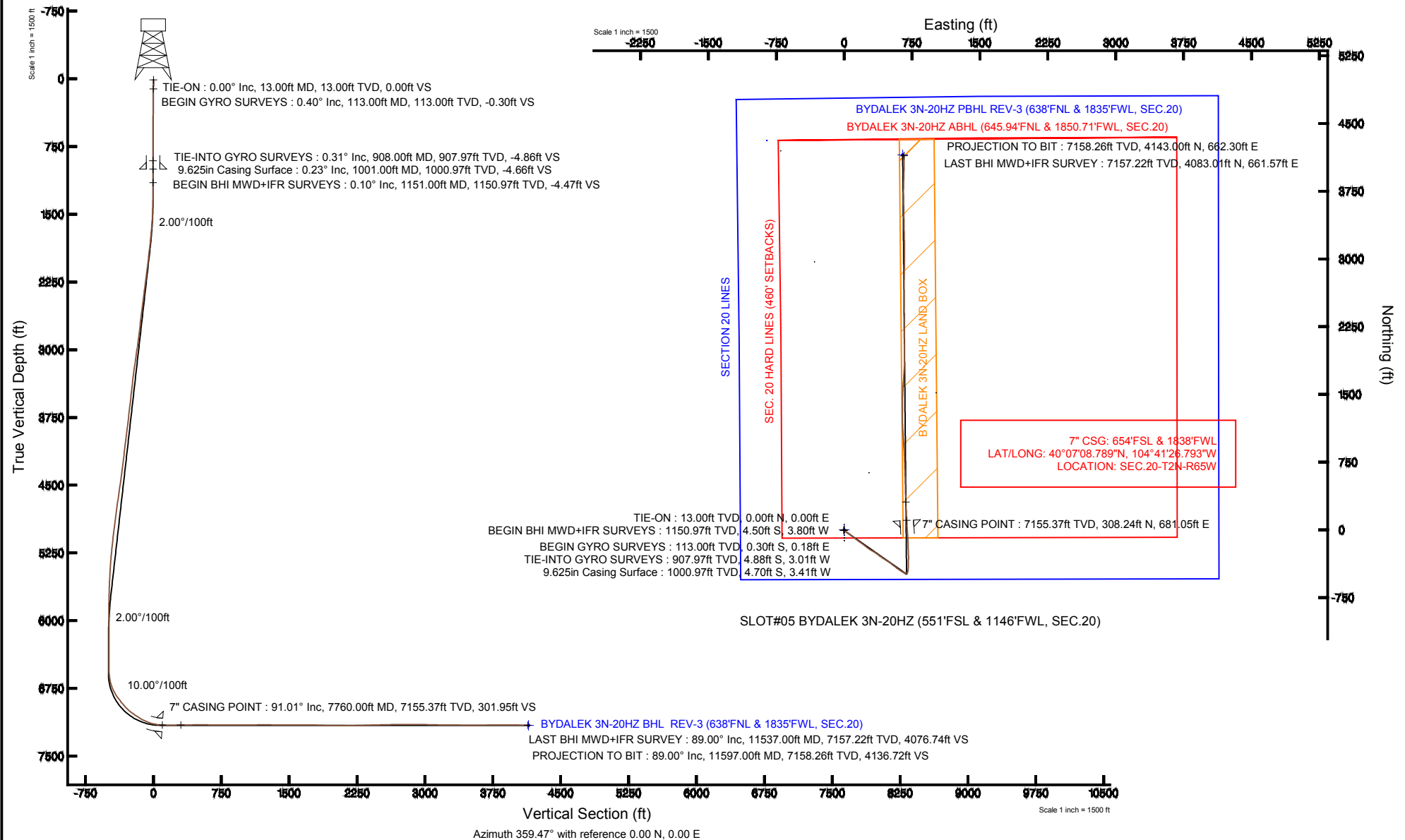


# KERR-MCGEE OIL & GAS ONSHORE LP

Location: COLORADO Slot: SLOT#05 BYDALEK 3N-20HZ (551'FSL & 1146'FWL, SEC.20)  
 Field: WELD COUNTY (KERR MCGEE) Well: BYDALEK 3N-20HZ  
 Facility: SEC.20-T2N-R65W Wellbore: BYDALEK 3N-20HZ PWB

Plot reference wellpath is BYDALEK 3N-20HZ (REV-D.0) PWB

True vertical depths are referenced to ENSIGN 138 (RKB)	Grid System: NAD83 / Lambert Colorado SP, Northern Zone (501), US feet
Measured depths are referenced to ENSIGN 138 (RKB)	North Reference: True north
ENSGIN 138 (RKB) to Mean Sea Level: 4944 feet	Scale: True distance
Mean Sea Level to Mud line (At Slot: SLOT#05 BYDALEK 3N-20HZ (551'FSL & 1146'FWL, SEC.20)): 0 feet	Depths are in feet
Coordinates are in feet referenced to Slot	Created by: wilsjeff02 on 6/5/2013





# Actual Wellpath Report

BYDALEK 3N-20HZ AWP

Page 1 of 6



## REFERENCE WELLPATH IDENTIFICATION

Operator	KERR-MCGEE OIL & GAS ONSHORE LP	Slot	SLOT#05 BYDALEK 3N-20HZ (551'FSL & 1146'FWL, SEC.20)
Area	COLORADO	Well	BYDALEK 3N-20HZ
Field	WELD COUNTY (KERR MCGEE)	Wellbore	BYDALEK 3N-20HZ AWB
Facility	SEC.20-T2N-R65W		

## REPORT SETUP INFORMATION

Projection System	NAD83 / Lambert Colorado SP, Northern Zone (501), US feet	Software System	WellArchitect® 4.0.0
North Reference	True	User	Wilsjef02
Scale	0.99996	Report Generated	6/5/2013 at 10:31:42
Convergence at slot	n/a	Database/Source file	WellArchitectDB/BYDALEK_3N-20HZ_AWB.xml

## WELLPATH LOCATION

	Local coordinates		Grid coordinates		Geographic coordinates	
	North[ft]	East[ft]	Easting[US ft]	Northing[US ft]	Latitude	Longitude
Slot Location	59.80	-0.23	3225629.74	1286953.27	40°07'05.743"N	104°41'35.560"W
Facility Reference Pt			3225630.51	1286893.48	40°07'05.152"N	104°41'35.557"W
Field Reference Pt			3197771.84	1268891.29	40°04'09.600"N	104°47'36.000"W

## WELLPATH DATUM

Calculation method	Minimum curvature	ENSIGN 138 (RKB) to Facility Vertical Datum	4944.00ft
Horizontal Reference Pt	Slot	ENSIGN 138 (RKB) to Mean Sea Level	4944.00ft
Vertical Reference Pt	ENSIGN 138 (RKB)	ENSIGN 138 (RKB) to Mud Line at Slot (SLOT#05 BYDALEK 3N-20HZ (551'FSL & 1146'FWL, SEC.20))	4944.00ft
MD Reference Pt	ENSIGN 138 (RKB)	Section Origin	N 0.00, E 0.00 ft
Field Vertical Reference	Mean Sea Level	Section Azimuth	359.47°



# Actual Wellpath Report

BYDALEK 3N-20HZ AWP

Page 2 of 6



## REFERENCE WELLPATH IDENTIFICATION

Operator	KERR-MCGEE OIL & GAS ONSHORE LP	Slot	SLOT#05 BYDALEK 3N-20HZ (551'FSL & 1146'FWL, SEC.20)
Area	COLORADO	Well	BYDALEK 3N-20HZ
Field	WELD COUNTY (KERR MCGEE)	Wellbore	BYDALEK 3N-20HZ AWB
Facility	SEC.20-T2N-R65W		

## WELLPATH DATA (130 stations) † = interpolated/extrapolated station

MD [ft]	Inclination [°]	Azimuth [°]	TVD [ft]	Vert Sect [ft]	North [ft]	East [ft]	Latitude	Longitude	DLS [°/100ft]	Comments
0.00†	0.000	148.100	0.00	0.00	0.00	0.00	40°07'05.743"N	104°41'35.560"W	0.00	
13.00	0.000	148.100	13.00	0.00	0.00	0.00	40°07'05.743"N	104°41'35.560"W	0.00	TIE-ON
113.00	0.400	148.100	113.00	-0.30	-0.30	0.18	40°07'05.740"N	104°41'35.558"W	0.40	BEGIN GYRO SURVEYS
213.00	0.600	203.470	213.00	-1.07	-1.07	0.16	40°07'05.732"N	104°41'35.558"W	0.50	
313.00	0.370	156.430	312.99	-1.85	-1.85	0.08	40°07'05.725"N	104°41'35.559"W	0.44	
413.00	0.930	215.620	412.99	-2.80	-2.80	-0.26	40°07'05.715"N	104°41'35.563"W	0.81	
513.00	0.590	205.040	512.98	-3.92	-3.93	-0.95	40°07'05.704"N	104°41'35.572"W	0.37	
613.00	0.120	193.540	612.98	-4.49	-4.50	-1.20	40°07'05.699"N	104°41'35.575"W	0.47	
713.00	0.550	249.720	712.97	-4.75	-4.77	-1.67	40°07'05.696"N	104°41'35.581"W	0.49	
813.00	0.390	264.960	812.97	-4.94	-4.96	-2.46	40°07'05.694"N	104°41'35.592"W	0.20	
908.00	0.310	295.120	907.97	-4.86	-4.88	-3.01	40°07'05.695"N	104°41'35.599"W	0.21	TIE-INTO GYRO SURVEYS
1151.00	0.100	298.400	1150.97	-4.47	-4.50	-3.80	40°07'05.698"N	104°41'35.609"W	0.09	BEGIN BHI MWD+IFR SURVEYS
1242.00	0.300	334.600	1241.97	-4.21	-4.25	-3.97	40°07'05.701"N	104°41'35.611"W	0.25	
1333.00	1.700	129.800	1332.95	-4.87	-4.90	-3.03	40°07'05.695"N	104°41'35.599"W	2.17	
1455.00	3.200	120.600	1454.84	-7.80	-7.79	1.29	40°07'05.666"N	104°41'35.543"W	1.27	
1516.00	5.000	127.900	1515.68	-10.34	-10.29	4.85	40°07'05.641"N	104°41'35.498"W	3.07	
1608.00	7.200	126.800	1607.16	-16.32	-16.21	12.63	40°07'05.583"N	104°41'35.397"W	2.39	
1698.00	8.700	125.800	1696.29	-23.78	-23.57	22.67	40°07'05.510"N	104°41'35.268"W	1.67	
1789.00	10.300	124.400	1786.04	-32.51	-32.19	34.97	40°07'05.425"N	104°41'35.110"W	1.78	
1881.00	10.700	126.200	1876.50	-42.33	-41.88	48.64	40°07'05.329"N	104°41'34.934"W	0.56	
1976.00	11.300	125.400	1969.75	-53.06	-52.48	63.35	40°07'05.224"N	104°41'34.745"W	0.65	
2071.00	11.700	124.800	2062.84	-64.10	-63.37	78.84	40°07'05.117"N	104°41'34.545"W	0.44	
2166.00	11.500	127.500	2155.90	-75.50	-74.63	94.27	40°07'05.005"N	104°41'34.347"W	0.61	
2260.00	11.700	130.600	2247.98	-87.54	-86.54	108.94	40°07'04.888"N	104°41'34.158"W	0.70	
2357.00	11.700	129.200	2342.97	-100.30	-99.16	124.03	40°07'04.763"N	104°41'33.964"W	0.29	
2452.00	11.500	126.800	2436.03	-112.20	-110.92	139.07	40°07'04.647"N	104°41'33.770"W	0.55	
2547.00	11.600	127.200	2529.11	-123.78	-122.37	154.27	40°07'04.534"N	104°41'33.574"W	0.13	
2640.00	11.100	125.000	2620.29	-134.71	-133.15	169.05	40°07'04.427"N	104°41'33.384"W	0.71	
2736.00	11.100	124.400	2714.49	-145.37	-143.68	184.24	40°07'04.323"N	104°41'33.188"W	0.12	
2830.00	11.700	123.300	2806.64	-155.85	-154.02	199.67	40°07'04.221"N	104°41'32.990"W	0.68	
2926.00	12.400	129.200	2900.52	-167.86	-165.88	215.80	40°07'04.104"N	104°41'32.782"W	1.47	
3020.00	12.600	128.600	2992.30	-180.78	-178.65	231.63	40°07'03.978"N	104°41'32.578"W	0.25	
3115.00	12.900	127.300	3084.95	-193.82	-191.55	248.17	40°07'03.850"N	104°41'32.366"W	0.44	
3210.00	13.400	127.000	3177.46	-207.03	-204.60	265.39	40°07'03.721"N	104°41'32.144"W	0.53	
3305.00	12.600	123.600	3270.03	-219.55	-216.96	282.81	40°07'03.599"N	104°41'31.920"W	1.16	
3400.00	12.300	120.300	3362.80	-230.55	-227.80	300.18	40°07'03.492"N	104°41'31.696"W	0.81	
3495.00	12.600	119.900	3455.56	-240.99	-238.07	317.90	40°07'03.390"N	104°41'31.468"W	0.33	
3590.00	11.800	122.600	3548.42	-251.54	-248.46	335.07	40°07'03.288"N	104°41'31.247"W	1.03	
3685.00	11.600	126.000	3641.44	-262.54	-259.31	350.98	40°07'03.180"N	104°41'31.042"W	0.76	
3780.00	10.600	124.400	3734.66	-273.22	-269.86	365.92	40°07'03.076"N	104°41'30.850"W	1.10	
3875.00	11.300	125.100	3827.93	-283.65	-280.15	380.74	40°07'02.974"N	104°41'30.659"W	0.75	
3970.00	11.300	127.800	3921.09	-294.84	-291.21	395.71	40°07'02.865"N	104°41'30.467"W	0.56	
4065.00	11.800	126.900	4014.17	-306.52	-302.74	410.83	40°07'02.751"N	104°41'30.272"W	0.56	
4159.00	12.300	124.200	4106.10	-318.06	-314.14	426.80	40°07'02.639"N	104°41'30.066"W	0.80	
4253.00	12.800	120.600	4197.85	-329.15	-325.07	444.04	40°07'02.531"N	104°41'29.844"W	0.99	



# Actual Wellpath Report

BYDALEK 3N-20HZ AWP

Page 3 of 6



REFERENCE WELLPATH IDENTIFICATION				
Operator	KERR-MCGEE OIL & GAS ONSHORE LP	Slot	SLOT#05 BYDALEK 3N-20HZ (551'FSL & 1146'FWL, SEC.20)	
Area	COLORADO	Well	BYDALEK 3N-20HZ	
Field	WELD COUNTY (KERR MCGEE)	Wellbore	BYDALEK 3N-20HZ AWB	
Facility	SEC.20-T2N-R65W			

WELLPATH DATA (130 stations) † = interpolated/extrapolated station										
MD [ft]	Inclination [°]	Azimuth [°]	TVD [ft]	Vert Sect [ft]	North [ft]	East [ft]	Latitude	Longitude	DLS [°/100ft]	Comments
4348.00	13.400	120.600	4290.38	-340.28	-336.03	462.58	40°07'02.422"N	104°41'29.606"W	0.63	
4442.00	13.100	123.900	4381.88	-351.93	-347.52	480.79	40°07'02.309"N	104°41'29.371"W	0.87	
4541.00	13.700	126.500	4478.19	-365.34	-360.75	499.53	40°07'02.178"N	104°41'29.130"W	0.86	
4636.00	12.700	127.200	4570.67	-378.50	-373.76	516.89	40°07'02.049"N	104°41'28.907"W	1.07	
4732.00	12.900	128.600	4664.29	-391.72	-386.82	533.67	40°07'01.920"N	104°41'28.691"W	0.38	
4827.00	12.400	128.300	4756.98	-404.81	-399.76	549.96	40°07'01.792"N	104°41'28.481"W	0.53	
4922.00	12.200	128.200	4849.80	-417.49	-412.29	565.86	40°07'01.669"N	104°41'28.276"W	0.21	
5017.00	11.600	126.000	4942.76	-429.45	-424.11	581.47	40°07'01.552"N	104°41'28.075"W	0.79	
5112.00	11.000	124.200	5035.92	-440.30	-434.82	596.70	40°07'01.446"N	104°41'27.880"W	0.73	
5206.00	11.300	123.700	5128.14	-450.59	-444.97	611.78	40°07'01.346"N	104°41'27.685"W	0.34	
5302.00	10.600	123.100	5222.40	-460.77	-455.01	627.00	40°07'01.246"N	104°41'27.490"W	0.74	
5397.00	8.500	120.900	5316.07	-469.27	-463.39	640.34	40°07'01.164"N	104°41'27.318"W	2.24	
5492.00	7.200	119.900	5410.18	-475.95	-469.96	651.53	40°07'01.099"N	104°41'27.174"W	1.38	
5586.00	6.100	118.100	5503.55	-481.32	-475.25	661.04	40°07'01.046"N	104°41'27.051"W	1.19	
5681.00	5.200	117.400	5598.09	-485.76	-479.61	669.32	40°07'01.003"N	104°41'26.945"W	0.95	
5776.00	4.400	112.700	5692.75	-489.21	-483.00	676.50	40°07'00.970"N	104°41'26.852"W	0.94	
5870.00	3.700	109.700	5786.52	-491.68	-485.41	682.68	40°07'00.946"N	104°41'26.773"W	0.78	
5966.00	2.900	86.500	5882.36	-492.63	-486.31	688.02	40°07'00.937"N	104°41'26.704"W	1.60	
6059.00	2.700	76.400	5975.25	-492.01	-485.65	692.50	40°07'00.944"N	104°41'26.646"W	0.57	
6154.00	0.800	60.800	6070.20	-491.18	-484.80	695.25	40°07'00.952"N	104°41'26.611"W	2.04	
6346.00	0.300	99.900	6262.19	-490.63	-484.23	696.92	40°07'00.958"N	104°41'26.590"W	0.31	
6580.00	0.200	317.100	6496.19	-490.44	-484.04	697.25	40°07'00.960"N	104°41'26.585"W	0.20	
6632.00	0.600	348.400	6548.19	-490.11	-483.70	697.13	40°07'00.963"N	104°41'26.587"W	0.85	
6679.00	4.900	9.300	6595.13	-487.89	-481.48	697.40	40°07'00.985"N	104°41'26.583"W	9.24	
6726.00	9.000	16.400	6641.77	-482.39	-475.97	698.77	40°07'01.039"N	104°41'26.566"W	8.90	
6773.00	14.900	17.300	6687.73	-473.11	-466.67	701.60	40°07'01.131"N	104°41'26.529"W	12.56	
6822.00	20.800	10.900	6734.36	-458.57	-452.09	705.13	40°07'01.275"N	104°41'26.484"W	12.67	
6869.00	27.200	3.800	6777.28	-439.66	-433.16	707.42	40°07'01.462"N	104°41'26.454"W	14.92	
6917.00	32.300	2.400	6818.94	-415.90	-409.38	708.68	40°07'01.697"N	104°41'26.438"W	10.72	
6964.00	36.300	1.600	6857.76	-389.44	-382.92	709.60	40°07'01.959"N	104°41'26.426"W	8.56	
7011.00	38.200	0.400	6895.17	-361.01	-354.48	710.09	40°07'02.240"N	104°41'26.420"W	4.33	
7058.00	40.300	0.700	6931.57	-331.27	-324.74	710.38	40°07'02.534"N	104°41'26.416"W	4.49	
7107.00	44.100	359.600	6967.86	-298.37	-291.84	710.45	40°07'02.859"N	104°41'26.415"W	7.90	
7153.00	49.700	357.700	6999.28	-264.80	-258.27	709.63	40°07'03.191"N	104°41'26.426"W	12.54	
7201.00	54.800	357.100	7028.66	-226.89	-220.37	707.91	40°07'03.565"N	104°41'26.448"W	10.67	
7248.00	56.700	359.300	7055.11	-188.05	-181.55	706.69	40°07'03.949"N	104°41'26.464"W	5.60	
7296.00	58.700	358.000	7080.76	-147.49	-140.99	705.73	40°07'04.350"N	104°41'26.476"W	4.75	
7343.00	63.000	357.000	7103.65	-106.48	-99.99	703.94	40°07'04.755"N	104°41'26.499"W	9.34	
7390.00	68.800	356.100	7122.83	-63.65	-57.19	701.35	40°07'05.178"N	104°41'26.532"W	12.46	
7437.00	74.800	356.400	7137.50	-19.09	-12.65	698.43	40°07'05.618"N	104°41'26.570"W	12.78	
7485.00	80.300	355.600	7147.85	27.68	34.08	695.16	40°07'06.080"N	104°41'26.612"W	11.57	
7523.00	85.200	356.300	7152.64	65.29	71.68	692.50	40°07'06.451"N	104°41'26.646"W	13.02	
7661.00	90.900	357.800	7157.34	203.03	209.35	685.41	40°07'07.812"N	104°41'26.737"W	4.27	
7693.00	91.300	357.300	7156.72	235.00	241.32	684.04	40°07'08.128"N	104°41'26.755"W	2.00	
7760.00†	91.012	357.588	7155.37	301.95	308.24	681.05	40°07'08.789"N	104°41'26.793"W	0.61	7" CASING POINT



# Actual Wellpath Report

BYDALEK 3N-20HZ AWP

Page 4 of 6



## REFERENCE WELLPATH IDENTIFICATION

Operator	KERR-MCGEE OIL & GAS ONSHORE LP	Slot	SLOT#05 BYDALEK 3N-20HZ (551'FSL & 1146'FWL, SEC.20)
Area	COLORADO	Well	BYDALEK 3N-20HZ
Field	WELD COUNTY (KERR MCGEE)	Wellbore	BYDALEK 3N-20HZ AWB
Facility	SEC.20-T2N-R65W		

## WELLPATH DATA (130 stations)

MD [ft]	Inclination [°]	Azimuth [°]	TVD [ft]	Vert Sect [ft]	North [ft]	East [ft]	Latitude	Longitude	DLS [°/100ft]	Comments
7786.00	90.900	357.700	7154.94	327.93	334.21	679.98	40°07'09.046"N	104°41'26.807"W	0.61	
7882.00	90.300	358.800	7153.93	423.90	430.16	677.05	40°07'09.994"N	104°41'26.845"W	1.31	
7978.00	90.000	358.400	7153.68	519.89	526.13	674.71	40°07'10.942"N	104°41'26.875"W	0.52	
8073.00	89.700	358.300	7153.93	614.87	621.09	671.97	40°07'11.881"N	104°41'26.910"W	0.33	
8262.00	89.900	357.700	7154.59	803.81	809.97	665.38	40°07'13.747"N	104°41'26.995"W	0.33	
8452.00	89.900	355.900	7154.92	993.59	999.67	654.77	40°07'15.622"N	104°41'27.132"W	0.95	
8546.00	90.500	356.700	7154.59	1087.45	1093.47	648.70	40°07'16.549"N	104°41'27.210"W	1.06	
8642.00	90.900	358.500	7153.42	1183.38	1189.37	644.68	40°07'17.496"N	104°41'27.261"W	1.92	
8736.00	88.900	359.600	7153.58	1277.37	1283.36	643.13	40°07'18.425"N	104°41'27.281"W	2.43	
8832.00	89.700	0.500	7154.76	1373.36	1379.35	643.21	40°07'19.374"N	104°41'27.280"W	1.25	
8926.00	90.100	1.900	7154.92	1467.32	1473.32	645.18	40°07'20.302"N	104°41'27.255"W	1.55	
9021.00	90.000	3.300	7154.84	1562.17	1568.22	649.49	40°07'21.240"N	104°41'27.199"W	1.48	
9116.00	89.900	4.500	7154.92	1656.89	1663.00	655.95	40°07'22.177"N	104°41'27.116"W	1.27	
9211.00	89.400	3.500	7155.50	1751.59	1757.77	662.58	40°07'23.113"N	104°41'27.031"W	1.18	
9306.00	88.000	0.900	7157.66	1846.44	1852.66	666.22	40°07'24.051"N	104°41'26.984"W	3.11	
9402.00	88.700	359.500	7160.42	1942.39	1948.62	666.56	40°07'24.999"N	104°41'26.980"W	1.63	
9497.00	90.300	359.100	7161.25	2037.39	2043.60	665.40	40°07'25.938"N	104°41'26.994"W	1.74	
9591.00	89.300	359.500	7161.58	2131.38	2137.60	664.25	40°07'26.867"N	104°41'27.009"W	1.15	
9686.00	90.800	358.800	7161.49	2226.38	2232.58	662.84	40°07'27.806"N	104°41'27.027"W	1.74	
9781.00	92.000	358.900	7159.17	2321.34	2327.53	660.93	40°07'28.744"N	104°41'27.052"W	1.27	
9876.00	91.700	0.200	7156.11	2416.29	2422.48	660.19	40°07'29.682"N	104°41'27.061"W	1.40	
9971.00	91.000	0.400	7153.87	2511.25	2517.45	660.68	40°07'30.621"N	104°41'27.055"W	0.77	
10066.00	91.700	359.900	7151.63	2606.22	2612.42	660.93	40°07'31.559"N	104°41'27.052"W	0.91	
10161.00	90.100	0.900	7150.14	2701.19	2707.40	661.60	40°07'32.498"N	104°41'27.043"W	1.99	
10256.00	90.500	1.100	7149.64	2796.16	2802.39	663.25	40°07'33.436"N	104°41'27.022"W	0.47	
10351.00	90.100	1.500	7149.14	2891.11	2897.36	665.41	40°07'34.375"N	104°41'26.994"W	0.60	
10445.00	88.400	0.700	7150.37	2985.06	2991.33	667.21	40°07'35.304"N	104°41'26.971"W	2.00	
10542.00	89.100	359.400	7152.49	3082.03	3088.31	667.30	40°07'36.262"N	104°41'26.970"W	1.52	
10636.00	88.400	358.800	7154.54	3176.00	3182.27	665.82	40°07'37.190"N	104°41'26.989"W	0.98	
10733.00	90.100	358.300	7155.81	3272.98	3279.23	663.37	40°07'38.149"N	104°41'27.020"W	1.83	
10827.00	89.300	359.100	7156.30	3366.96	3373.20	661.23	40°07'39.077"N	104°41'27.048"W	1.20	
10922.00	89.600	359.500	7157.21	3461.96	3468.19	660.07	40°07'40.016"N	104°41'27.062"W	0.53	
11016.00	89.600	358.400	7157.87	3555.95	3562.17	658.35	40°07'40.945"N	104°41'27.085"W	1.17	
11111.00	91.300	358.800	7157.12	3650.93	3657.13	656.03	40°07'41.883"N	104°41'27.114"W	1.84	
11206.00	90.900	0.200	7155.30	3745.91	3752.11	655.20	40°07'42.822"N	104°41'27.125"W	1.53	
11301.00	89.500	2.200	7154.97	3840.86	3847.08	657.19	40°07'43.760"N	104°41'27.099"W	2.57	
11396.00	90.100	1.000	7155.30	3935.79	3942.04	659.84	40°07'44.699"N	104°41'27.065"W	1.41	
11491.00	88.700	0.500	7156.29	4030.76	4037.03	661.09	40°07'45.637"N	104°41'27.049"W	1.56	
11537.00	89.000	0.700	7157.22	4076.74	4083.01	661.57	40°07'46.092"N	104°41'27.043"W	0.78	LAST BHI MWD+IFR SURVEY
11597.00	89.000	0.700	7158.26	4136.72	4143.00	662.30	40°07'46.685"N	104°41'27.034"W	0.00	PROJECTION TO BIT





# Actual Wellpath Report

BYDALEK 3N-20HZ AWP

Page 5 of 6



## REFERENCE WELLPATH IDENTIFICATION

Operator	KERR-MCGEE OIL & GAS ONSHORE LP	Slot	SLOT#05 BYDALEK 3N-20HZ (551'FSL & 1146'FWL, SEC.20)
Area	COLORADO	Well	BYDALEK 3N-20HZ
Field	WELD COUNTY (KERR MCGEE)	Wellbore	BYDALEK 3N-20HZ AWB
Facility	SEC.20-T2N-R65W		

## HOLE & CASING SECTIONS - Ref Wellbore: BYDALEK 3N-20HZ AWB Ref Wellpath: BYDALEK 3N-20HZ AWP

String/Diameter	Start MD [ft]	End MD [ft]	Interval [ft]	Start TVD [ft]	End TVD [ft]	Start N/S [ft]	Start E/W [ft]	End N/S [ft]	End E/W [ft]
13.5in Open Hole	13.00	1001.00	988.00	13.00	1000.97	0.00	0.00	-4.70	-3.41
9.625in Casing Surface	13.00	1001.00	988.00	13.00	1000.97	0.00	0.00	-4.70	-3.41
8.75in Open Hole	1001.00	7576.00	6575.00	1000.97	7156.07	-4.70	-3.41	124.47	689.35
7in Casing Intermediate	13.00	7556.00	7543.00	13.00	7155.01	0.00	0.00	104.53	690.48
6.125in Open Hole	7556.00	11597.00	4041.00	7155.01	7158.26	104.53	690.48	4143.00	662.30

## TARGETS

Name	MD [ft]	TVD [ft]	North [ft]	East [ft]	Grid East [US ft]	Grid North [US ft]	Latitude	Longitude	Shape
BYDALEK 7 PAD HARD LINES (460' SETBACKS)		-4.00	4309.62	-858.16	3224732.44	1291254.72	40°07'48.331"N	104°41'46.608"W	polygon
BYDALEK 7 PAD SECTION LINES		-4.00	4309.62	-858.16	3224732.44	1291254.72	40°07'48.331"N	104°41'46.608"W	polygon
DOM RED X 20-3 100' RADIUS		7158.33	4180.60	818.00	3226409.64	1291140.96	40°07'47.056"N	104°41'25.029"W	circle
BYDALEK 3N-20HZ BHL REV-2 (698'FNL & 1835'FWL, SEC.20)		7159.00	4090.94	646.59	3226239.05	1291049.75	40°07'46.170"N	104°41'27.236"W	point
BYDALEK 3N-20HZ BHL REV-3 (638'FNL & 1835'FWL, SEC.20)		7159.00	4150.94	646.59	3226238.51	1291109.75	40°07'46.763"N	104°41'27.236"W	point
BYDALEK 3N-20HZ BHL ON PLAT REV-1 (460'FNL & 1845'FWL, SEC.20)		7159.00	4328.94	656.59	3226246.89	1291287.82	40°07'48.522"N	104°41'27.107"W	point
BYDALEK 3N-20HZ LAND BOX		7159.00	0.00	0.00	3225629.74	1286953.27	40°07'05.743"N	104°41'35.560"W	polygon
PALMER X20-20 150' RADIUS		7160.00	2301.80	247.85	3225856.63	1289257.13	40°07'28.490"N	104°41'32.369"W	circle
DOM RED X 20-2D 150' RADIUS		7302.00	3188.14	375.77	3225976.47	1290144.56	40°07'37.249"N	104°41'30.723"W	circle
PALMER X 20-6 150' RADIUS		7303.00	2868.16	811.91	3226415.49	1289828.58	40°07'34.086"N	104°41'25.108"W	circle

## WELLPATH COMPOSITION - Ref Wellbore: BYDALEK 3N-20HZ AWB Ref Wellpath: BYDALEK 3N-20HZ AWP

Start MD [ft]	End MD [ft]	Positional Uncertainty Model	Log Name/Comment	Wellbore
13.00	908.00	Generic gyro - continuous (Standard)	GYRODATA SURVEYS <113-908>	BYDALEK 3N-20HZ AWB
908.00	7523.00	NaviTrak (MAGCORR,IFR)	BHI MWD+IFR SURVEYS 8 3/4" HOLE <1151-7523>	BYDALEK 3N-20HZ AWB
7523.00	11537.00	OnTrak (MAGCORR,IFR)	BHI MWD+IFR SURVEYS 6 1/8" HOLE <7661-11537>	BYDALEK 3N-20HZ AWB
11537.00	11597.00	Blind Drilling (std)	Projection to bit	BYDALEK 3N-20HZ AWB



# Actual Wellpath Report

BYDALEK 3N-20HZ AWP

Page 6 of 6



## REFERENCE WELLPATH IDENTIFICATION

Operator	KERR-MCGEE OIL & GAS ONSHORE LP	Slot	SLOT#05 BYDALEK 3N-20HZ (551'FSL & 1146'FWL, SEC.20)
Area	COLORADO	Well	BYDALEK 3N-20HZ
Field	WELD COUNTY (KERR MCGEE)	Wellbore	BYDALEK 3N-20HZ AWB
Facility	SEC.20-T2N-R65W		

## WELLPATH COMMENTS

MD [ft]	Inclination [°]	Azimuth [°]	TVD [ft]	Comment
13.00	0.000	148.100	13.00	TIE-ON
113.00	0.400	148.100	113.00	BEGIN GYRO SURVEYS
908.00	0.310	295.120	907.97	TIE-INTO GYRO SURVEYS
1151.00	0.100	298.400	1150.97	BEGIN BHI MWD+IFR SURVEYS
7760.00	91.012	357.588	7155.37	7" CASING POINT
11537.00	89.000	0.700	7157.22	LAST BHI MWD+IFR SURVEY
11597.00	89.000	0.700	7158.26	PROJECTION TO BIT