



Natural Formation Evaluation
Gamma Ray

Realtime Log

Scale: 1:240
True Vertical Depth

Company: Kerr-McGee Oil & Gas Onshore LP
Well: Byddalek 3N-20HZ
Field: Weld County (Kerr McGee)
Region: RMD Country: United States

Status: Field Print
API Number: 051233621700

Surface Location:
Latitude: 40° 7' 5.743" N
Longitude: 104° 41' 35.560" W

SEC: 20 TWN: 2N RGE: 65W

Other Services:
Directional
VSS

Permanent Datum (P.D.): Ground Level Elevation: 4944.00 ft.
Log Measured From: Kelly Bushing 13.00 ft. Above P.D.
Depth Reference: Driller's Depth

Elevations:
KB: 4944.00 ft.
DF: N/A
GL: 4931.00 ft.

Interval Logged Dates Magnetic Field Reference
Top: 6588 ft. Date From: 17/Apr/13 Dip Angle: 66.87° Azi Reference North: True
Bottom: 7528 ft. Date To: 20/Apr/14 Total Mag to Reference
Spud Date: 16/Apr/13 Field Strength: 52924.0 nT North Correction: 8.41°

Borehole Record			Casing Record		
Hole Size	From	To	Size	Weight	From To
13.500 in.	Surface	1003 ft.	9.600 in.	36.00 lb/ft	Surface 1001 ft.
8.750 in.	1003 ft.	7576 ft.	7.000 in.	26.00 lb/ft	Surface 7557 ft.

Mud Record			Deviation Record		
Type	From	To	Hole Size	Interval	Inc / Az (Start) Inc / Az (End)
Water Based - Fresh	3937 ft.	9214 ft.	13.500 in.	1003 ft.	0.4° / 148.1° 0.3° / 295.1°
			8.750 in.	7473 ft.	0.1° / 298.4° 85.2° / 356.7°
					/
					/
					/
					/
					/

Acquisition System Software Version			Other		
Advantage	2.20U4	Rig / Contractor: Ensign 138	/ Ensign Drilling		
PATS	6.4.1.34	Job No: 5257266	/ D&E		
		District: / Unit: RMD			

INTEQ does not guarantee the accuracy or correctness of interpretations provided in or from this log. Since all interpretations are opinions based on measurements, INTEQ shall under no circumstances be responsible for consequential damages or any other loss, costs, damages or expenses incurred or sustained in connection with the use of any such interpretations. INTEQ disclaims all expressed and implied warranties related to this service. INTEQ's liabilities and obligations shall be governed by INTEQ's Standard Terms and Conditions.

Log Run Summary													Circ. Time (hrs.)
LWD Run No.	BHA Run No.	Bit Run No.	Bit Size (in.)	Bit Type	Bit Gauge Length (in.)	Assembly Type	Logged Interval		Bit Depth Interval		Date / Time		
							Top (ft.)	Bottom (ft.)	From (ft.)	To (ft.)	Start	End	
1	4	2	8.750	PDC	2.500	Steerable	N/A	N/A	1003	6639	17/Apr/2013 00:30	18/Apr/2013 14:45	22.65
2	4	3	8.750	PDC	2.500	Steerable	6588	7216	6639	7266	18/Apr/2013 21:33	19/Apr/2013 15:37	35.26
3	4	3	8.750	PDC	2.500	Steerable	7217	7529	7268	7579	20/Apr/2013 01:06	20/Apr/2013 11:54	45.57

Crew								
Name	Arrive	Depart	Name	Arrive	Depart	Name	Arrive	Depart
	Wellsite	Wellsite		Wellsite	Wellsite		Wellsite	Wellsite
Robert Bartlett	Apr 16 2013	Apr 24 2013	David Campbell	Apr 16 2013	Apr 24 2013	Will Drake	Apr 16 2013	Apr 21 2013
Robert Keagan Lea	Apr 16 2013	Apr 24 2013	Bill Herbers	Apr 20 2013	Apr 24 2013			

Mud Properties Record

Date / Time	LWD Run No.	Measured Depth (ft.)	Mud Type	Density (ppg)	Viscosity (cp)	pH	Fluid Loss (cc)	Oil / Water	Source	Total Chlorides (ppm)	K+ (%)
17/Apr/2013 15:55	1	3937	Water Based – Fresh	8.5	29	8.8	40.0	0 / 98	Active Mud Pit	0	0.0
18/Apr/2013 05:26	1	6283	Water Based – Fresh	8.4	29	9.5	40.0	0 / 99	Active Mud Pit	0	0.0
18/Apr/2013 23:36	2	6711	Water Based – Fresh	9.8	35	9.0	11.0	0 / 92	Active Mud Pit	0	0.0
20/Apr/2013 00:39	3	7266	Water Based – Fresh	9.8	37	9.0	7.0	0 / 92	Active Mud Pit	0	0.0

Mnemonics

Curve	Description	Units
GRAX	Gamma Ray Apparent, 0.5 ft. Avg	API
ROPA	Rate of Penetration, 3.0 ft. Avg	ft/hr
TCDX	Downhole Temperature	degF
WOB	Surface Weight on Bit, 1.0 ft. Avg.	kibf

Equipment and Service Data

LWD Run No.	Tool	Serial Number	Measurement	Bit Offset (ft)	Max O.D. (in.)	Min I.D. (in.)
1	DIR	11906077	Directional	59.22	6.750	0.000
1	SRIG	12521741	Gamma	55.84	6.750	0.000
2	DIR	11906077	Directional	52.92	6.750	0.000
2	SRIG	12521741	Gamma	49.55	6.750	0.000
3	DIR	11906077	Directional	53.19	6.750	0.000
3	SRIG	12521741	Gamma	49.81	6.750	0.000

Service and Tool Mnemonics

Mnemonic	Name	Description
DIR	Directional	Wellbore directional survey
SRIG	Inclination and Gamma	Probe based gamma ray and inclination module

Comments

<p>1.) Depth measurements obtained from a depth control system not supplied or operated by Baker Hughes. Due to the lack of control by Baker Hughes logging engineers, depth calibrations and measurements could not be independently verified.</p> <p>2.) Baker Hughes runs 1 utilized 6 3/4 inch NaviTrak services (Directional only) behind an 8 3/4 inch bit and steerable assembly from 1003 to 6639 feet MD (985 to 6555 feet TVD).</p> <p>3.) Baker Hughes runs 2 & 3 utilized 6 3/4 inch NaviGamma services (Gamma Ray and Directional) behind an 8 3/4 inch bit and steerable assembly from 6639 to 7576 feet MD (6555 to 7156 feet TVD).</p> <p>4.) The interval from 1003 to 6639 feet MD (985 to 6555 feet TVD) was not logged due to directional only services being provided through the straight-hole and nudge section for Baker Hughes run 1.</p>
--

Remarks

Number	Measured Depth (ft)	Hole Section (in.)	LWD Run No.	Remark
1	6588	8.750	2	Begin logging due to directional only services provided thru vertical section.

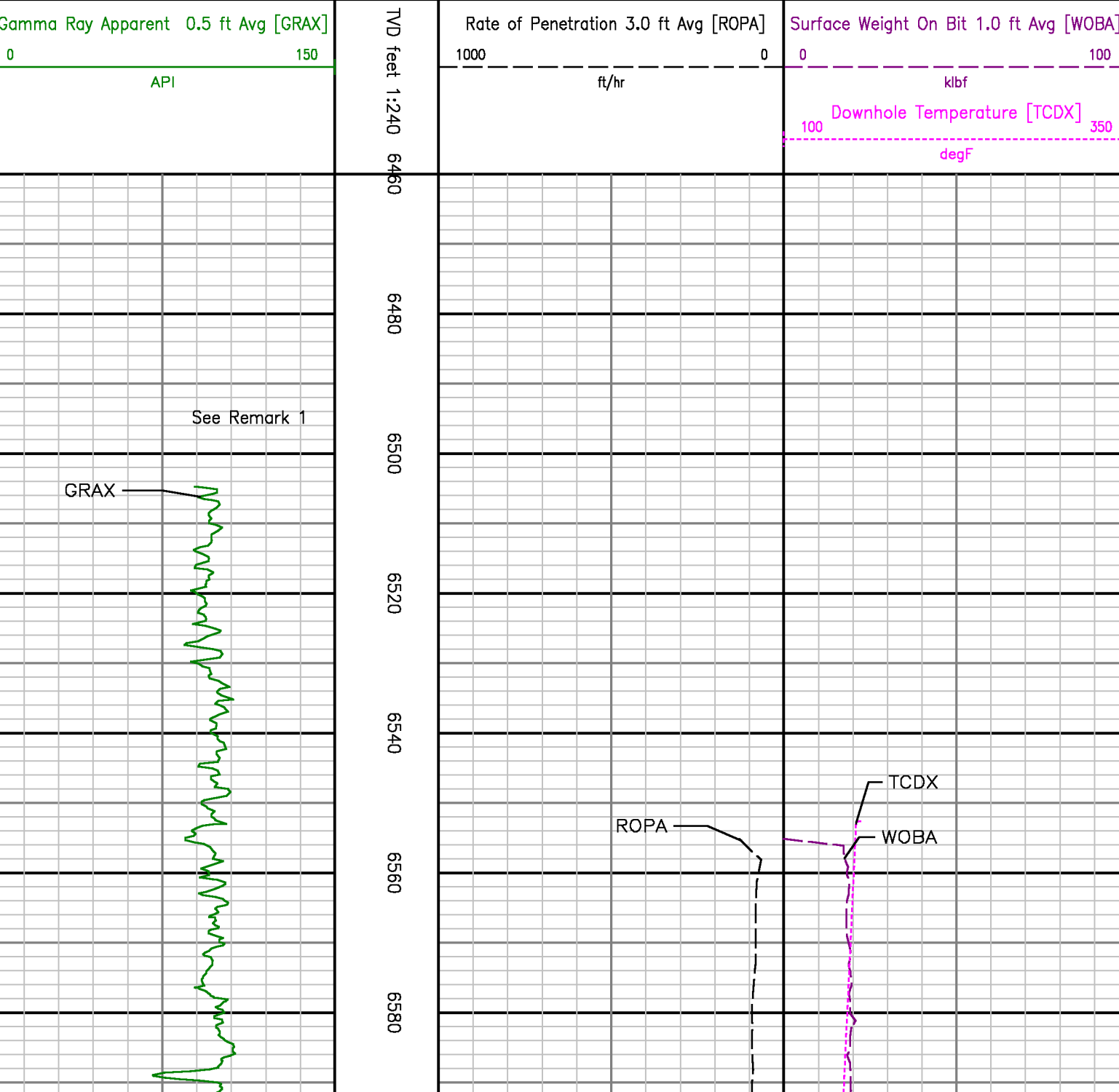


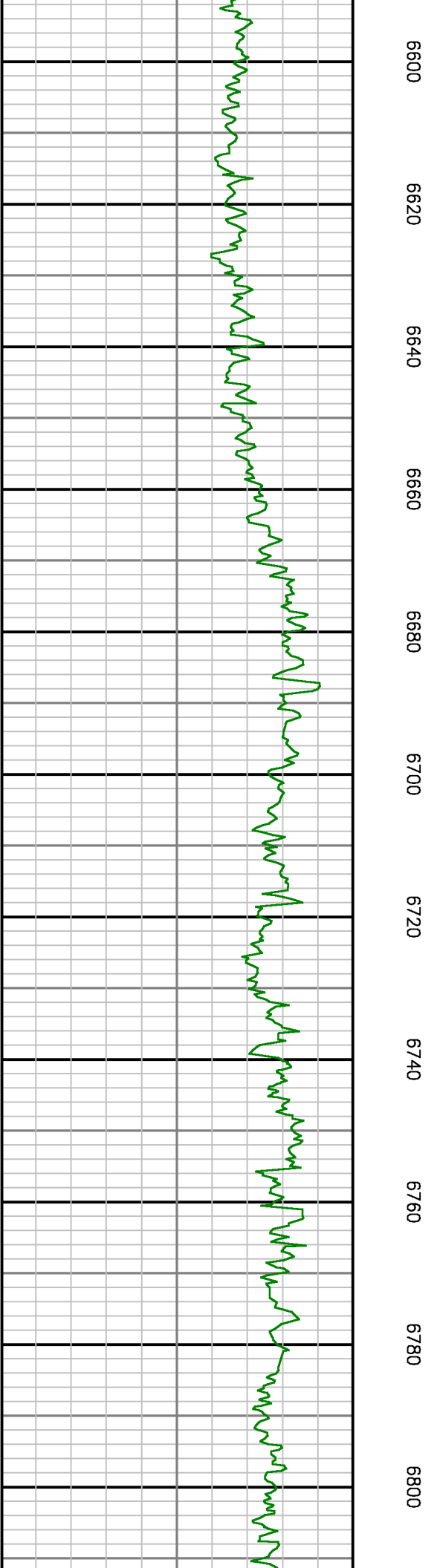
Company : Kerr-McGee Oil & Gas Onshore LP

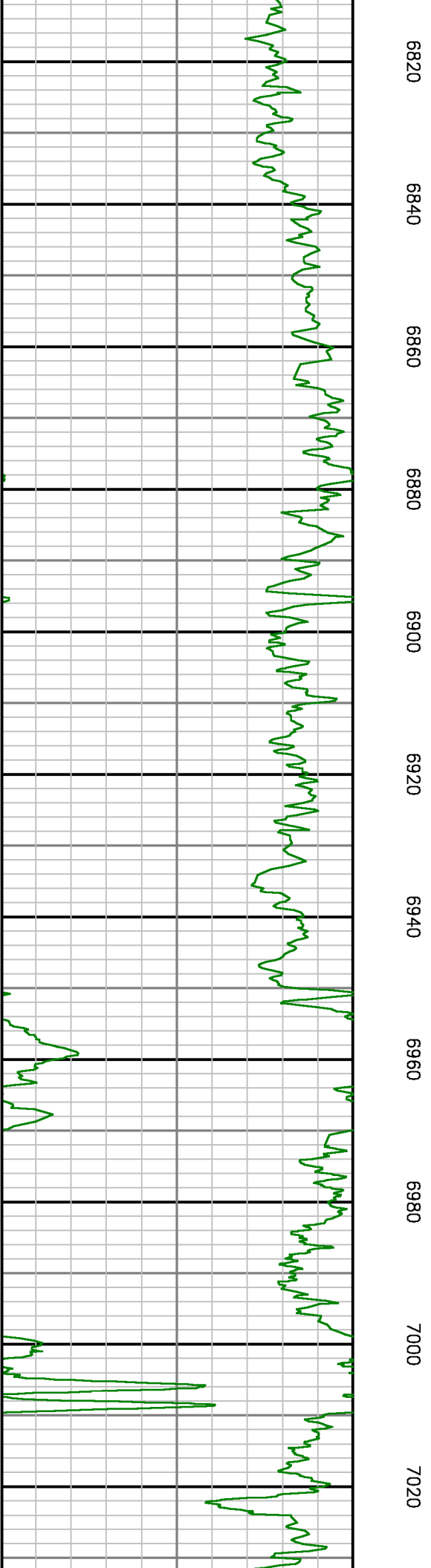
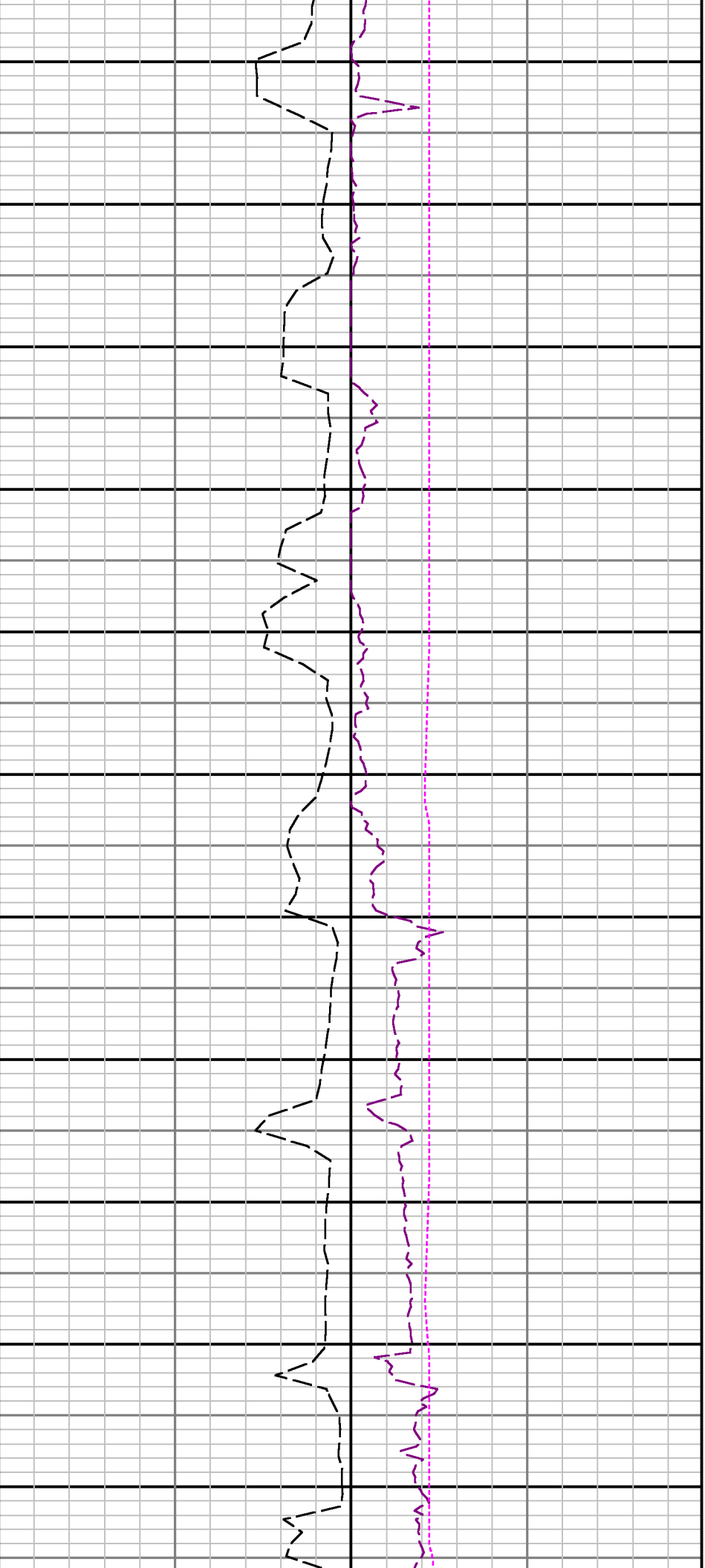
Well : Bydalek 3N-20HZ

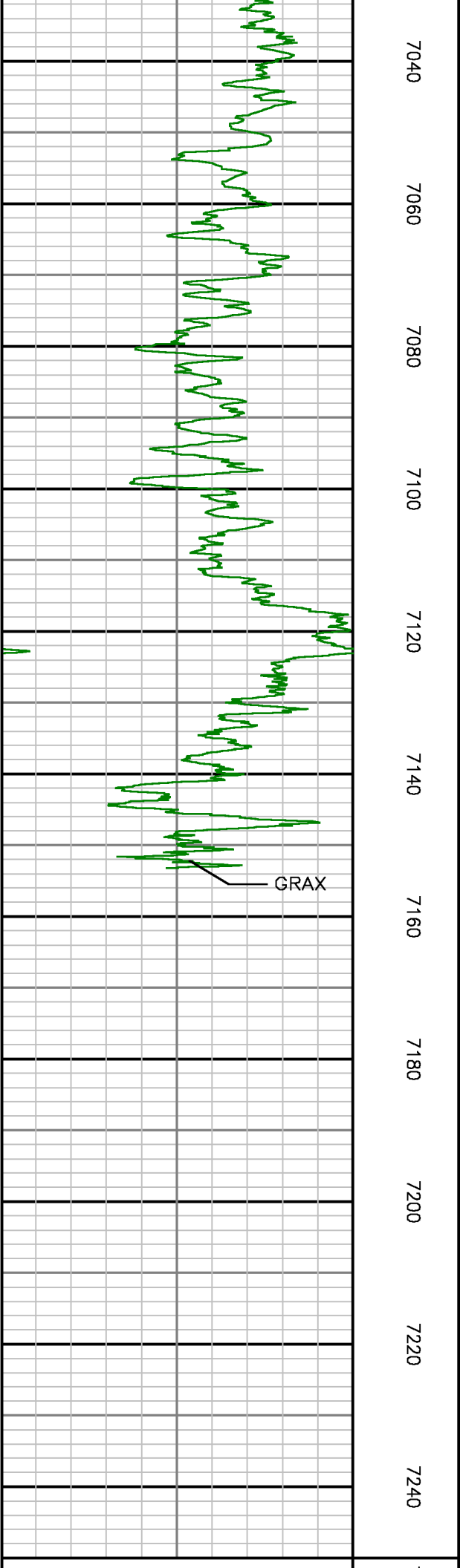
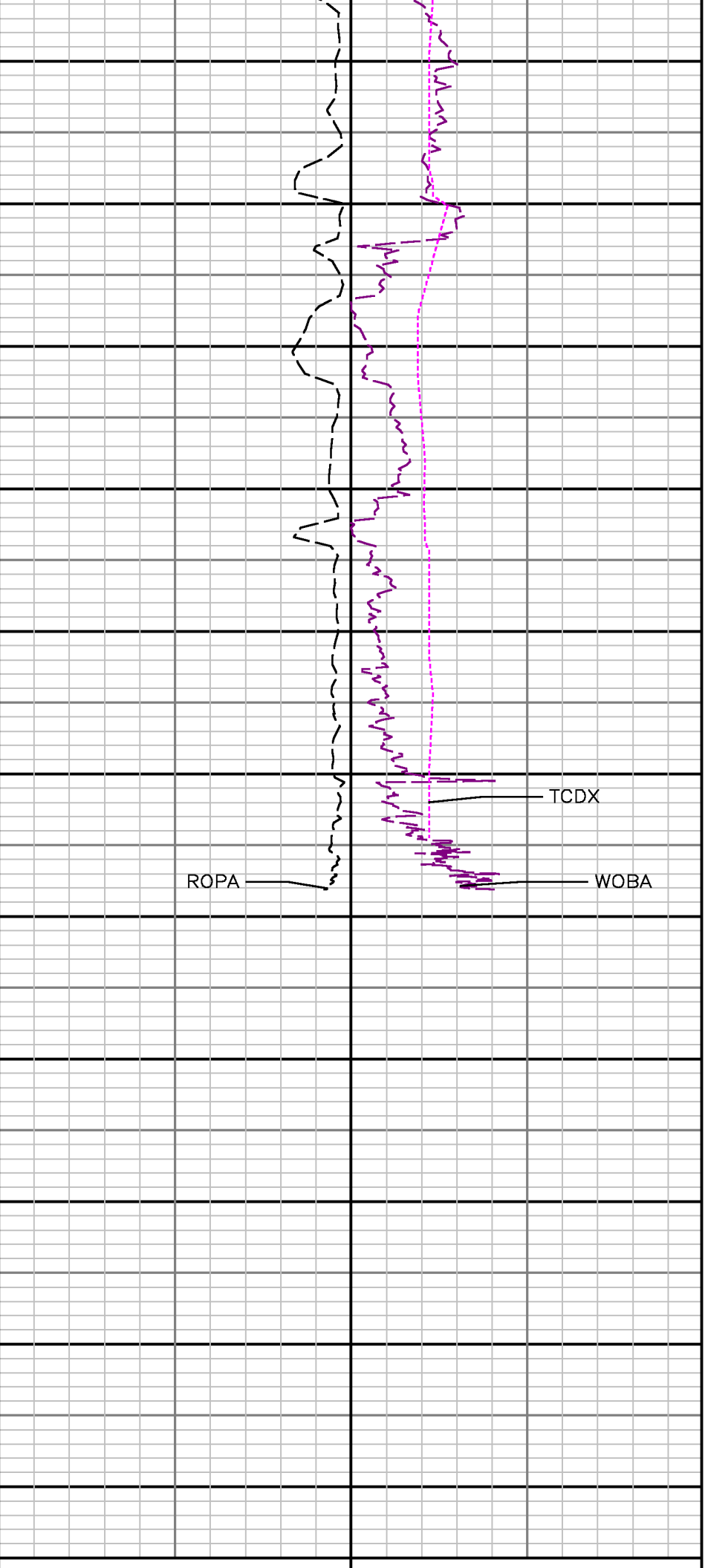
Interval : 6460.00 - 7250.00 feet

Created : 4/22/2013 2:55:12 PM









Gamma Ray Apparent 0.5 ft Avg [GRAX]		TVD feet 1:240	Rate of Penetration 3.0 ft Avg [ROPA]		Surface Weight On Bit 1.0 ft Avg [WOBA]	
0	150		1000	0	0	100
API			ft/hr		klbf	
					Downhole Temperature [TCDX]	
					100	350
					degF	

ADVANTAGE Field Survey Listing												
<div> <div>Operator :Kerr-McGee Oil & Gas Onshore LPField : Weld County (Kerr McGee) API No : 051233621700</div> <div>Well :Bydalek 3N-20HZ Rig : Ensign 138 Job :5257266</div> <div>Wellbore :Bydalek 3N-20HZ Orig Hole</div> </div>												
Well Origin												
Latitude		40.12 deg			Longitude		-104.69 deg					
North Reference		True			Drill Depth Zero		Kelly Bushing					
Vertical Datum is		Mean Sea Level			Vertical Datum to DDZ		5.00 ft					
Vertical Section North		0.00 ft			Vertical Section East		0.00 ft					
Vertical Section Azimuth		359.47 deg			Vertical Section Depth		0.00ft					
Grid Convergence		0.00 deg			Magnetic Declination		8.41 deg					
Total Correction		8.41 deg			TVD Calculation Method		Minimal Curvature					
D-Raw Calculation		Magcorr1			Local Magnetic Field		52924 nT					
Local Magnetic Dip Angle		66.87 deg			Local Gravity Field		9.801 m/s^2					
Tie	MD ft	Incl deg	Azim deg	North ft	East ft	TVD ft	VS ft	Incr VS ft	Crs Len ft	DLS deg/100ft	Build deg/100ft	Turn deg/100ft
U	0.00	0.00	0.00	0.00	0.00	0.00	0.00	0.00				
	13.00	0.00	148.10	0.00	0.00	13.00	0.00	0.00	13.00	0.00	0.00	1139.23
	113.00	0.40	148.10	-0.30	0.18	113.00	-0.30	0.35	100.00	0.40	0.40	0.00
	213.00	0.60	203.47	-1.07	0.16	213.00	-1.07	1.13	100.00	0.50	0.20	55.37
	313.00	0.37	156.43	-1.85	0.08	312.99	-1.85	1.91	100.00	0.44	-0.23	-47.04
	413.00	0.93	215.62	-2.80	-0.26	412.99	-2.80	2.92	100.00	0.81	0.56	59.19
	513.00	0.59	205.04	-3.93	-0.95	512.98	-3.92	4.24	100.00	0.37	-0.34	-10.58
	613.00	0.12	193.54	-4.50	-1.20	612.98	-4.49	4.86	100.00	0.47	-0.47	-11.50
	713.00	0.55	249.72	-4.77	-1.67	712.97	-4.75	5.41	100.00	0.49	0.43	56.18
	813.00	0.39	264.96	-4.96	-2.46	812.97	-4.94	6.22	100.00	0.20	-0.16	15.24
	908.00	0.31	295.12	-4.88	-3.01	907.97	-4.85	6.78	95.00	0.21	-0.08	31.75
	1151.00	0.10	298.40	-4.50	-3.80	1150.97	-4.47	7.65	243.00	0.09	-0.09	1.35
	1242.00	0.30	334.60	-4.25	-3.97	1241.97	-4.21	7.95	91.00	0.25	0.22	39.78
	1333.00	1.70	129.80	-4.90	-3.03	1332.95	-4.87	9.10	91.00	2.18	1.54	170.55
	1455.00	3.20	120.60	-7.80	1.29	1454.84	-7.81	14.30	122.00	1.26	1.23	-7.54
	1516.00	5.00	127.90	-10.30	4.86	1515.88	-10.34	18.65	61.00	3.07	2.95	11.97
	1608.00	7.20	126.80	-16.21	12.64	1607.16	-16.33	28.43	92.00	2.39	2.39	-1.20
	1698.00	8.70	125.80	-23.57	22.68	1696.29	-23.78	40.87	90.00	1.67	1.67	-1.11
	1789.00	10.30	124.40	-32.20	34.97	1786.04	-32.52	55.89	91.00	1.78	1.76	-1.54
	1881.00	10.70	126.20	-41.89	48.65	1876.50	-42.34	72.66	92.00	0.56	0.43	1.96
	1976.00	11.30	125.40	-52.49	63.35	1969.75	-53.07	90.78	95.00	0.65	0.63	-0.84
	2071.00	11.70	124.80	-63.38	78.85	2062.84	-64.10	109.72	95.00	0.44	0.42	-0.63
	2166.00	11.50	127.50	-74.64	94.27	2155.90	-75.51	128.82	95.00	0.61	-0.21	2.84
	2260.00	11.70	130.60	-86.55	108.94	2247.98	-87.55	147.71	94.00	0.70	0.21	3.30
	2357.00	11.70	129.20	-99.16	124.03	2342.97	-100.31	167.38	97.00	0.29	0.00	-1.45
	2452.00	11.50	126.80	-110.92	139.08	2436.03	-112.21	186.48	95.00	0.55	-0.21	-2.53
	2547.00	11.60	127.20	-122.37	154.27	2529.11	-123.79	205.50	95.00	0.13	0.11	0.42
	2640.00	11.10	125.00	-133.16	169.05	2620.29	-134.72	223.80	93.00	0.71	-0.54	-2.37
	2736.00	11.10	124.40	-143.66	184.25	2714.49	-145.38	242.28	96.00	0.12	0.00	-0.63
	2830.00	11.70	123.30	-154.03	199.68	2806.64	-155.87	260.66	94.00	0.68	0.64	-1.17
	2926.00	12.40	129.20	-165.88	215.80	2900.52	-167.87	280.66	96.00	1.47	0.73	6.15
	3020.00	12.60	128.60	-176.66	231.64	2992.30	-180.79	301.22	94.00	0.25	0.21	-0.64
	3115.00	12.90	127.30	-191.55	248.17	3084.95	-193.64	322.19	95.00	0.44	0.32	-1.37

	3210.00	13.40	127.00	-204.80	285.40	3177.48	-207.05	343.80	95.00	0.53	0.53	-0.32
	3305.00	12.80	123.80	-216.98	282.82	3270.03	-219.57	365.18	95.00	1.18	-0.84	-3.58
	3400.00	12.30	120.30	-227.80	300.19	3382.80	-230.57	385.83	95.00	0.81	-0.32	-3.47
	3495.00	12.80	119.90	-238.07	317.91	3455.58	-241.00	408.12	95.00	0.33	0.32	-0.42
	3590.00	11.80	122.80	-248.47	335.07	3548.42	-251.58	428.19	95.00	1.03	-0.84	2.84
	3685.00	11.80	128.00	-259.32	350.98	3641.44	-262.55	445.44	95.00	0.78	-0.21	3.58
	3780.00	10.80	124.40	-269.87	365.92	3734.66	-273.24	463.73	95.00	1.10	-1.05	-1.88
	3875.00	11.30	125.10	-280.18	380.75	3827.93	-283.67	481.77	95.00	0.75	0.74	0.74
	3970.00	11.30	127.80	-291.21	395.71	3921.09	-294.86	500.38	95.00	0.58	0.00	2.84
	4065.00	11.80	128.90	-302.75	410.84	4014.17	-308.54	519.41	95.00	0.58	0.53	-0.95
	4159.00	12.30	124.20	-314.15	428.80	4108.10	-318.08	539.02	94.00	0.80	0.53	-2.87
	4253.00	12.80	120.80	-325.08	444.05	4197.85	-329.17	559.44	94.00	0.99	0.54	-3.83
	4348.00	13.40	120.80	-336.04	462.59	4290.38	-340.31	580.98	95.00	0.63	0.63	0.00
	4442.00	13.10	123.90	-347.53	480.80	4381.88	-351.98	602.51	94.00	0.87	-0.32	3.51
	4541.00	13.70	128.50	-360.78	499.54	4478.18	-365.38	625.45	99.00	0.88	0.81	2.83
	4638.00	12.70	127.20	-373.78	518.90	4570.87	-378.53	647.14	95.00	1.07	-1.05	0.73
	4732.00	12.90	128.80	-386.83	533.88	4664.29	-391.75	668.41	98.00	0.38	0.21	1.48
Tie	MD ft	Incl deg	Azim deg	North ft	East ft	TVD ft	VS ft	Incr VS ft	Crs Len ft	DLS deg/100ft	Build deg/100ft	Turn deg/100ft
	4827.00	12.40	128.30	-399.77	549.98	4758.98	-404.84	689.22	95.00	0.53	-0.53	-0.32
	4922.00	12.20	128.20	-412.30	565.87	4849.80	-417.52	709.48	95.00	0.21	-0.21	-0.11
	5017.00	11.80	128.00	-424.12	581.49	4942.76	-429.48	729.04	95.00	0.79	-0.64	-2.32
	5112.00	11.00	124.20	-434.83	598.71	5035.92	-440.33	747.88	95.00	0.73	-0.63	-1.89
	5208.00	11.30	123.70	-444.98	611.79	5128.14	-450.82	765.83	94.00	0.34	0.32	-0.53
	5302.00	10.80	123.10	-455.02	627.01	5222.39	-460.80	784.07	98.00	0.74	-0.73	-0.83
	5397.00	8.50	120.90	-463.40	640.38	5316.07	-469.30	799.83	95.00	2.24	-2.21	-2.32
	5492.00	7.20	119.90	-469.97	651.55	5410.18	-475.98	812.80	95.00	1.38	-1.37	-1.05
	5588.00	8.10	118.10	-475.28	661.08	5503.55	-481.38	823.89	94.00	1.19	-1.17	-1.91
	5681.00	5.20	117.40	-479.82	669.33	5598.08	-485.79	833.04	95.00	0.95	-0.95	-0.74
	5778.00	4.40	112.70	-483.01	678.52	5692.75	-489.25	840.98	95.00	0.94	-0.84	-4.95
	5870.00	3.70	109.70	-485.42	682.70	5788.51	-491.72	847.82	94.00	0.78	-0.74	-3.19
	5968.00	2.90	88.50	-488.32	688.04	5882.38	-492.88	853.03	98.00	1.80	-0.83	-24.17
	6059.00	2.70	78.40	-485.88	692.52	5975.25	-492.04	857.58	93.00	0.57	-0.21	-10.88
	6154.00	0.80	80.80	-484.81	695.27	6070.20	-491.22	860.45	95.00	2.05	-2.00	-18.42
	6348.00	0.30	99.90	-484.24	698.94	6262.19	-490.87	882.20	192.00	0.31	-0.28	20.38
	6580.00	0.20	317.10	-484.05	697.27	6496.19	-490.48	882.58	234.00	0.20	-0.04	-61.03
	6832.00	0.80	348.40	-483.71	697.15	6548.19	-490.14	882.94	52.00	0.85	0.77	80.19
	6879.00	4.90	9.30	-481.49	697.42	6595.12	-487.92	885.18	47.00	9.24	9.15	44.47
	6728.00	9.00	18.40	-475.98	698.79	6641.77	-482.43	870.85	47.00	8.89	8.72	15.11
	6773.00	14.90	17.30	-468.88	701.82	6687.73	-473.15	880.58	47.00	12.58	12.58	1.91
	6822.00	20.80	10.90	-452.11	705.15	6734.38	-458.81	895.57	49.00	12.87	12.04	-13.08
	6889.00	27.20	3.80	-433.17	707.44	6777.28	-439.70	914.84	47.00	14.92	13.82	-15.11
	6917.00	32.30	2.40	-409.39	708.70	6818.94	-415.93	938.45	48.00	10.73	10.83	-2.92
	6984.00	38.30	1.80	-382.93	709.82	6857.78	-389.48	964.94	47.00	8.58	8.50	-1.71
	7011.00	38.20	0.40	-354.49	710.11	6895.17	-381.04	993.38	47.00	4.33	4.04	-2.55
	7058.00	40.30	0.70	-324.75	710.39	6931.58	-331.31	1023.12	47.00	4.49	4.47	0.84
	7107.00	44.10	359.80	-291.85	710.47	6987.88	-298.40	1058.02	49.00	7.90	7.78	-2.24
	7153.00	49.70	357.70	-258.28	709.85	6999.28	-284.84	1089.80	48.00	12.53	12.17	-4.12
	7201.00	54.80	357.10	-220.38	707.93	7028.85	-228.92	1127.53	48.00	10.88	10.63	-1.28
	7248.00	58.70	359.30	-181.58	708.71	7055.11	-188.09	1168.38	47.00	5.59	4.04	4.68
	7298.00	58.70	358.00	-141.00	705.75	7080.75	-147.52	1208.95	48.00	4.75	4.17	-2.71
	7343.00	63.00	357.00	-100.00	703.98	7103.84	-108.51	1247.98	47.00	9.34	9.15	-2.13
	7390.00	68.80	356.10	-57.20	701.37	7122.83	-83.88	1290.87	47.00	12.48	12.34	-1.91
	7437.00	74.80	358.40	-12.87	698.45	7137.50	-19.13	1335.50	47.00	12.78	12.77	0.84
	7485.00	80.30	355.80	34.07	695.18	7147.84	27.84	1382.35	48.00	11.57	11.48	-1.88
	7523.00	85.20	358.30	71.88	692.52	7152.84	65.28	1420.03	38.00	13.02	12.89	1.83
	7681.00	90.90	357.80	209.34	685.43	7157.33	202.99	1557.89	138.00	4.27	4.13	1.09
	7893.00	91.30	357.30	241.31	684.08	7158.72	234.97	1589.89	32.00	2.00	1.25	-1.58
	7788.00	90.90	357.70	334.20	680.01	7154.93	327.89	1682.87	93.00	0.81	-0.43	0.43
	7882.00	90.30	358.10	430.13	678.49	7153.93	423.85	1778.88	98.00	0.75	-0.63	0.42
	7978.00	90.00	358.40	528.08	673.58	7153.88	519.83	1874.88	98.00	0.44	-0.31	0.31
	8073.00	89.70	358.30	621.04	670.82	7153.92	614.81	1989.88	95.00	0.33	-0.32	-0.11
	8282.00	89.90	357.70	809.93	664.23	7154.58	803.75	2158.88	189.00	0.33	0.11	-0.32

	8452.00	89.90	355.90	999.82	853.82	7154.92	993.53	2348.85	190.00	0.95	0.00	-0.95
	8548.00	90.50	358.70	1093.42	847.55	7154.59	1087.39	2442.85	94.00	1.08	0.84	0.85
	8642.00	90.90	358.50	1189.33	843.53	7153.42	1183.33	2538.84	98.00	1.92	0.42	1.87
	8738.00	88.90	359.80	1283.31	841.98	7153.58	1277.32	2632.83	94.00	2.43	-2.13	1.17
	8832.00	89.70	0.50	1379.30	842.08	7154.75	1373.30	2728.82	98.00	1.25	0.83	0.94
	8928.00	90.10	1.90	1473.28	844.03	7154.92	1467.28	2822.82	94.00	1.55	0.43	1.49
Tie	MD ft	Incl deg	Azim deg	North ft	East ft	TVD ft	VS ft	Incr VS ft	Crs Len ft	DLS deg/100ft	Build deg/100ft	Turn deg/100ft
	9021.00	90.00	3.30	1588.18	848.34	7154.83	1582.11	2917.82	95.00	1.48	-0.11	1.47
	9118.00	89.90	4.50	1682.98	854.80	7154.92	1658.83	3012.82	95.00	1.27	-0.11	1.28
	9211.00	89.40	3.50	1757.72	861.43	7155.50	1751.53	3107.81	95.00	1.18	-0.53	-1.05
	9308.00	88.00	0.90	1852.82	865.07	7157.85	1848.38	3202.78	95.00	3.11	-1.47	-2.74
	9402.00	88.70	359.50	1948.57	865.40	7180.42	1942.33	3298.74	98.00	1.83	0.73	-1.45
	9497.00	90.30	359.10	2043.58	864.24	7181.25	2037.33	3393.73	95.00	1.74	1.88	-0.42
	9591.00	89.30	359.50	2137.55	863.09	7181.57	2131.32	3487.73	94.00	1.15	-1.08	0.43
	9686.00	90.80	358.80	2232.54	861.68	7181.49	2228.32	3582.72	95.00	1.74	1.58	-0.74
	9781.00	92.00	358.90	2327.49	859.77	7159.18	2321.28	3677.89	95.00	1.27	1.27	0.11
	9878.00	91.70	0.20	2422.43	859.03	7158.09	2418.23	3772.84	95.00	1.40	-0.32	1.37
	9971.00	91.00	0.40	2517.40	859.53	7153.88	2511.20	3867.82	95.00	0.77	-0.74	0.21
	10068.00	91.70	359.90	2612.38	859.78	7151.82	2608.18	3962.59	95.00	0.91	0.74	-0.53
	10181.00	90.10	0.90	2707.38	860.44	7150.13	2701.13	4057.57	95.00	1.99	-1.88	1.05
	10258.00	90.50	1.10	2802.34	862.10	7149.83	2798.10	4152.57	95.00	0.47	0.42	0.21
	10351.00	90.10	1.50	2897.32	864.25	7149.13	2891.05	4247.57	95.00	0.80	-0.42	0.42
	10445.00	88.40	0.70	2991.29	868.08	7150.38	2985.00	4341.58	94.00	2.00	-1.81	-0.85
	10542.00	89.10	359.40	3088.28	868.14	7152.48	3081.97	4438.53	97.00	1.52	0.72	-1.34
	10638.00	88.40	358.80	3182.22	864.87	7154.53	3175.94	4532.51	94.00	0.98	-0.74	-0.84
	10733.00	90.10	358.30	3279.18	862.21	7155.80	3272.92	4629.50	97.00	1.83	1.75	-0.52
	10827.00	89.30	359.10	3373.15	860.08	7158.29	3368.90	4723.49	94.00	1.20	-0.85	0.85
	10922.00	89.80	359.50	3468.14	858.92	7157.21	3461.90	4818.49	95.00	0.53	0.32	0.42
	11018.00	89.80	358.40	3562.12	857.20	7157.88	3555.89	4912.48	94.00	1.17	0.00	-1.17
	11111.00	91.30	358.80	3657.09	854.88	7157.12	3650.87	5007.48	95.00	1.84	1.79	0.42
	11208.00	90.90	0.20	3752.08	854.05	7155.29	3745.85	5102.48	95.00	1.53	-0.42	1.47
	11301.00	89.50	2.20	3847.04	856.04	7154.98	3840.80	5197.45	95.00	2.57	-1.47	2.11
	11398.00	90.10	1.00	3942.00	858.70	7155.29	3935.73	5292.45	95.00	1.41	0.83	-1.27
	11491.00	88.70	0.50	4038.98	859.94	7158.28	4030.70	5387.44	95.00	1.58	-1.47	-0.53
	11537.00	89.00	0.70	4082.97	860.42	7157.21	4078.88	5433.43	48.00	0.78	0.85	0.43
	Projection to TD: 11597.00	89.00	0.70	4142.95	861.15	7158.25	4138.88	5493.42	80.00	0.00	0.00	0.00