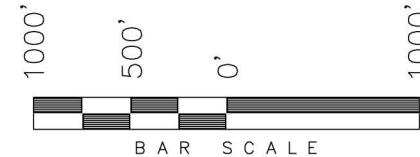


T6S, R93W, 6th P.M.

ENCANA OIL & GAS (USA) INC

WELL LOCATION, PITMAN FEDERAL 23-14B (O22NW), LOCATED AS SHOWN IN THE SW 1/4 SE 1/4 OF SECTION 22, T6S, R93W, 6th P.M. GARFIELD COUNTY, COLORADO.



NOTES:

1. Well footages are measured at right angles to the Section Lines.
2. Bearings are based on Global Positioning Satellite observations.
3. G.P.S. Operator: C.D. Slauch, (PDOP) = 1.5

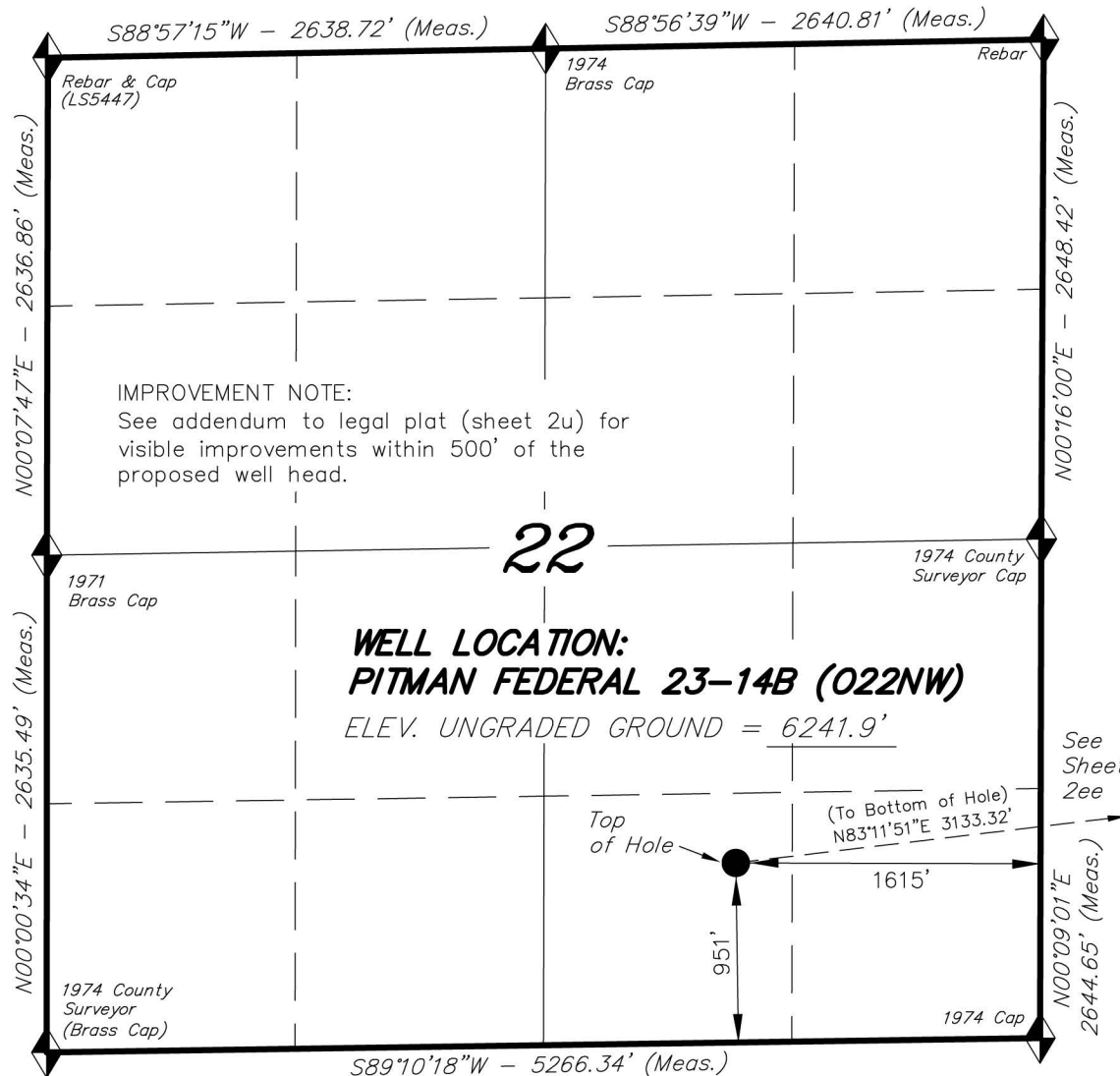
THIS IS TO CERTIFY THAT THE ABOVE PLAT WAS PREPARED FROM FIELD NOTES OF REAL SURVEYS MADE BY ME OR UNDER MY SUPERVISION. THE LOCATION HAS BEEN STAKED ON THE GROUND AS SHOWN ON THE PLAT, AND THAT THE SAID CORNERS ARE TRUE AND CORRECT TO THE BEST OF MY KNOWLEDGE AND BELIEF.

[Signature]
 REGISTERED LAND SURVEYOR
 REGISTRATION NO. 30125
 STATE OF COLORADO
 # 30125

TRI STATE LAND SURVEYING & CONSULTING

180 NORTH VERNAL AVE. - VERNAL, UTAH 84078
 (435) 781-2501

DATE SURVEYED: 03-25-13	SURVEYED BY: C.D.S.	SHEET 2e OF 8
DATE DRAWN: 04-19-13	DRAWN BY: M.W.	
REVISED: 08-09-13 M.W.	SCALE: 1" = 1000'	



◆ = SECTION CORNERS LOCATED

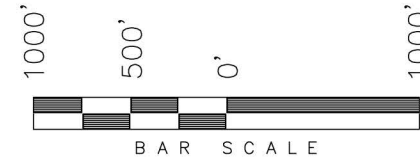
Basis of elevation is the Rifle 2 Triangulation Station. 39°31'53.80" N Lat. & 107°47'07.78" W Long. (NAD 83). Elevation = 5323.1' (NAVD88).

NAD 83 (SURFACE LOCATION)	
LATITUDE =	39°30'25.98" (39.507216°)
LONGITUDE =	107°45'29.49" (107.758190°)

T6S, R93W, 6th P.M.

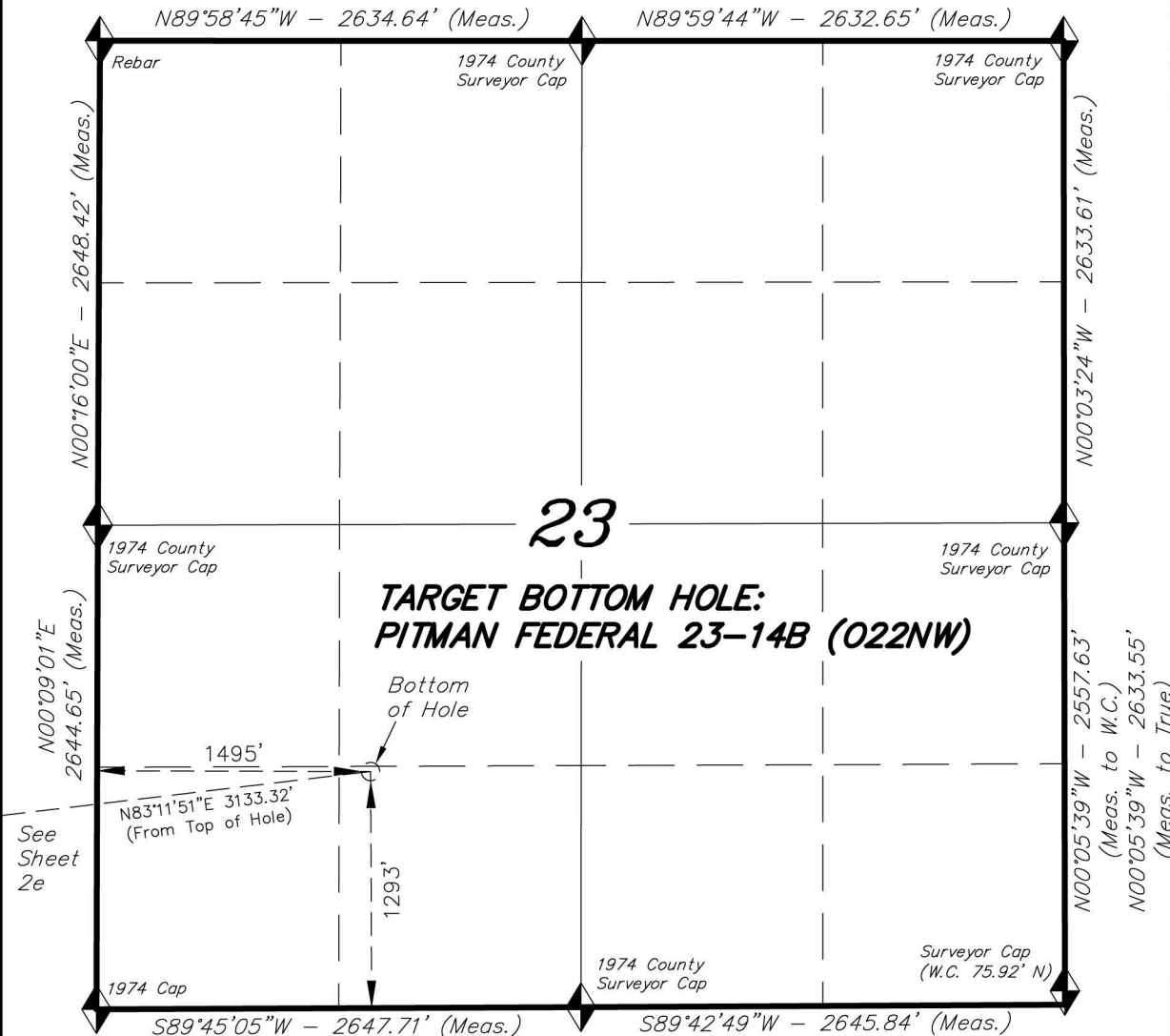
ENCANA OIL & GAS (USA) INC

TARGET BOTTOM HOLE, PITMAN
FEDERAL 23-14B (O22NW), LOCATED
AS SHOWN IN THE SE 1/4 SW 1/4 OF
SECTION 23, T6S, R93W, 6th P.M.
GARFIELD COUNTY, COLORADO.



NOTES:

1. Well footages are measured at right angles to the Section Lines.
2. Bearings are based on Global Positioning Satellite observations.



THIS IS TO CERTIFY THAT THE ABOVE PLAT WAS PREPARED FROM FIELD NOTES OF REAL SURVEYS MADE BY ME OR UNDER MY SUPERVISION. THE LOCATION HAS BEEN STAKED ON THE GROUND AS SHOWN ON THE PLAT, AND THAT THE SAID NOTES ARE TRUE AND CORRECT TO THE BEST OF MY KNOWLEDGE AND BELIEF.

[Signature]
REGISTERED LAND SURVEYOR
REGISTRATION NO. 30125
STATE OF COLORADO

◆ = SECTION CORNERS LOCATED

Basis of elevation is the Rifle 2 Triangulation Station. 39°31'53.80" N Lat. & 107°47'07.78" W Long. (NAD 83). Elevation = 5323.1' (NAVD88).

NAD 83 (BOTTOM HOLE LOCATION)		
LATITUDE	=	39°30'29.63" (39.508231°)
LONGITUDE	=	107°44'49.80" (107.747167°)

TRI STATE LAND SURVEYING & CONSULTING

180 NORTH VERNAL AVE. - VERNAL, UTAH 84078
(435) 781-2501

DATE SURVEYED: 03-26-13	SURVEYED BY: C.D.S.	SHEET 2ee OF 8
DATE DRAWN: 04-19-13	DRAWN BY: M.W.	
REVISED: 08-09-13 M.W.	SCALE: 1" = 1000'	