

ROCK TYPES

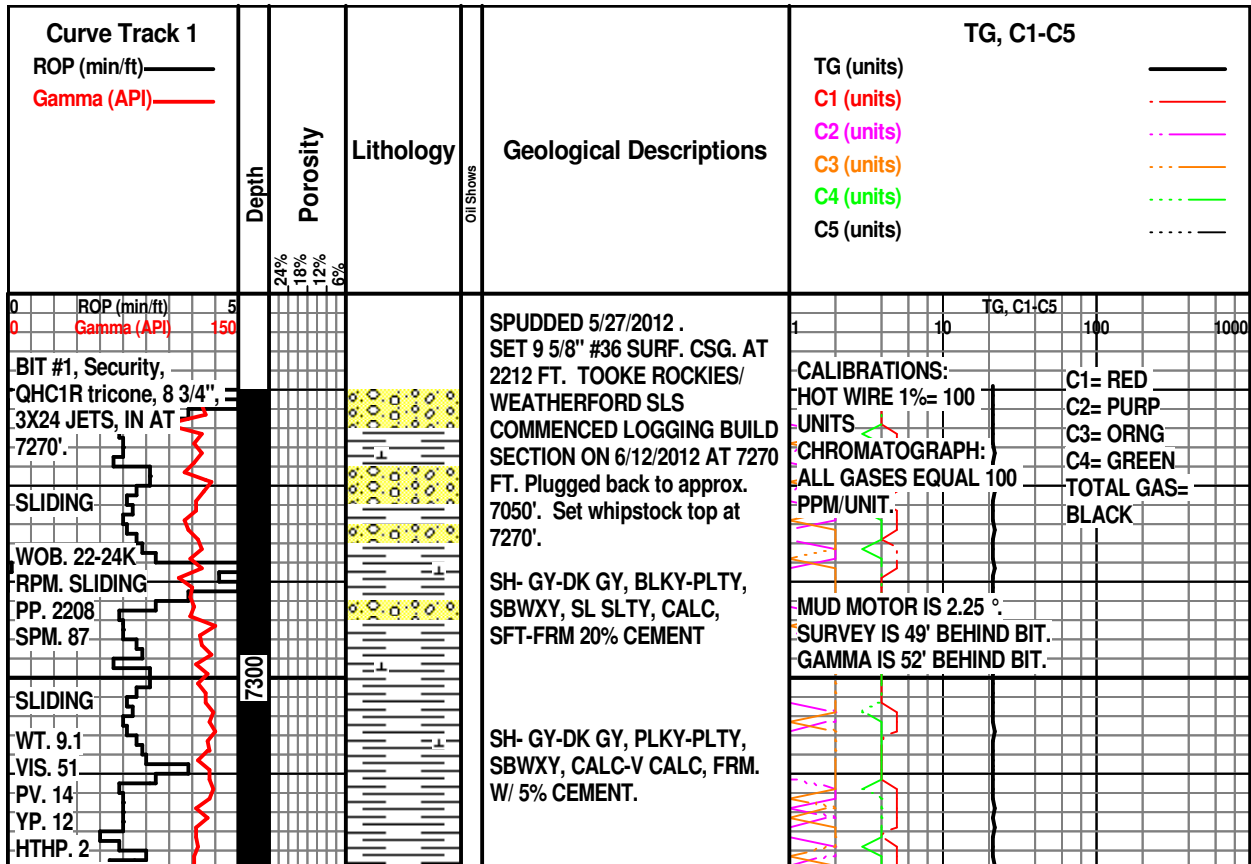
| | | | | |
|------|-------|------|-------|-------|
| Anhy | Clyst | Gyp | Mrlst | Shgy |
| Bent | Coal | Igne | Salt | Sltst |
| Brec | Congl | Lmst | Shale | Ss |
| Cht | Dol | Meta | Shcol | Till |

ACCESSORIES

| | | | | |
|----------------|---------|---------------|-----------------|----------------|
| MINERAL | Gyp | FOSSIL | Ostra | Sltstrg |
| Anhy | Hvymin | Algae | Pelec | Ssstrg |
| Arggrn | Kaol | Amph | Pellet | TEXTURE |
| Arg | Marl | Belm | Pisolite | Boundst |
| Bent | Minxl | Bioclst | Plant | Chalky |
| Bit | Nodule | Brach | Strom | Cryxln |
| Brecfrag | Phos | Bryozoa | STRINGER | Earthy |
| Calc | Pyr | Cephal | Anhy | Finexln |
| Carb | Salt | Coral | Arg | Grainst |
| Chtdk | Sandy | Crin | Bent | Lithogr |
| Chtlt | Silt | Echin | Coal | Microxln |
| Dol | Sil | Fish | Dol | Mudst |
| Feldspar | Sulphur | Foram | Gyp | Packst |
| Ferrpel | Tuff | Fossil | Ls | Wackst |
| Ferr | | Gastro | Mrst | |
| Glau | | Oolite | | |

OTHER SYMBOLS

| | | | | |
|----------------------|----------------|------------------|------------------|---------------|
| POROSITY TYPE | Vuggy | ROUNDING | Spotted | EVENTS |
| Earthy | SORTING | Rounded | Ques | Rft |
| Fenest | Well | Subrnd | Dead | Sidewall |
| Fracture | Moderate | Subang | INTERVALS | |
| Inter | Poor | Angular | Core | |
| Moldic | | OIL SHOWS | Dst | |
| Organic | | Even | | |
| Pinpoint | | | | |



NAP/H2O. 63:37
 CL. 71,000
 CA. 31,000
 NAACL. 9.33 ppb
 LGS. .9%

7334 MD
 10.23 INC
 3.38 AZM
 7332.77 TVD
 10.4 VS

SLIDING

7366 MD
 14.19 INC
 1.93 AZM
 7364.04 TVD
 17.2 VS

ROTATING

7397 MD
 15.17 INC
 1.67 AZM
 7394.02 TVD
 25.0 VS

SLIDING

7429 MD
 15.76 INC
 0.71 AZM
 7424.87 TVD
 33.5 VS

ROTATING

7460 MD
 18.16 INC
 0.94 AZM
 7454.51 TVD
 42.6 VS

SLIDING

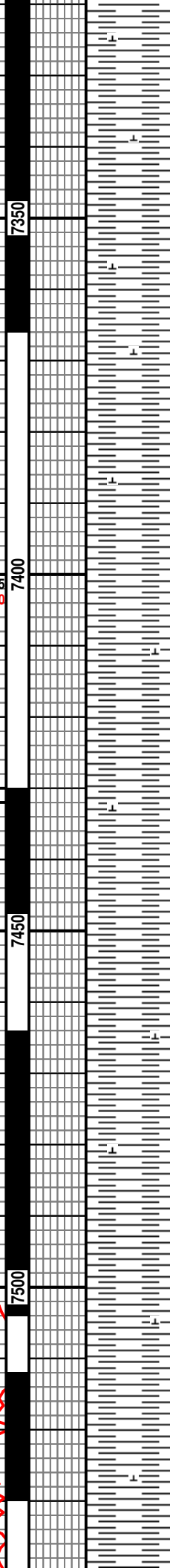
WOB. 6-10K
 RPM. 20
 PP. 2700-3K
 SPM. 100-110

7492 MD
 22.10 INC
 2.59 AZM
 7484.55 TVD
 53.6 VS

ROTATE

WT. 9.2
 VIS. 47

7524 MD
 25.26 INC
 2.84 AZM
 7513.86 TVD
 66.4 VS



SH- GY-DK GY, BLKY-PLTY,
 SBWXY, CALC-V CALC, FRM.
 W/ <5% CEMENT.

SH- DK GY-GY, BLKY-PLTY,
 SBWXY, CARB IN PT, V CALC,
 FRM.

**TRIP OUT AT 7351'
 FOR PDC BIT.
 6/13/2012**

SH- DK GY-GY, BLKY-PLTY,
 SBWXY, SL SLTY, CARB,
 CALC, SFT-FRM.

SH- DK GY-GY, BLKY-PLTY,
 SBWXY, CARB IN PT, V CALC,
 FRM.

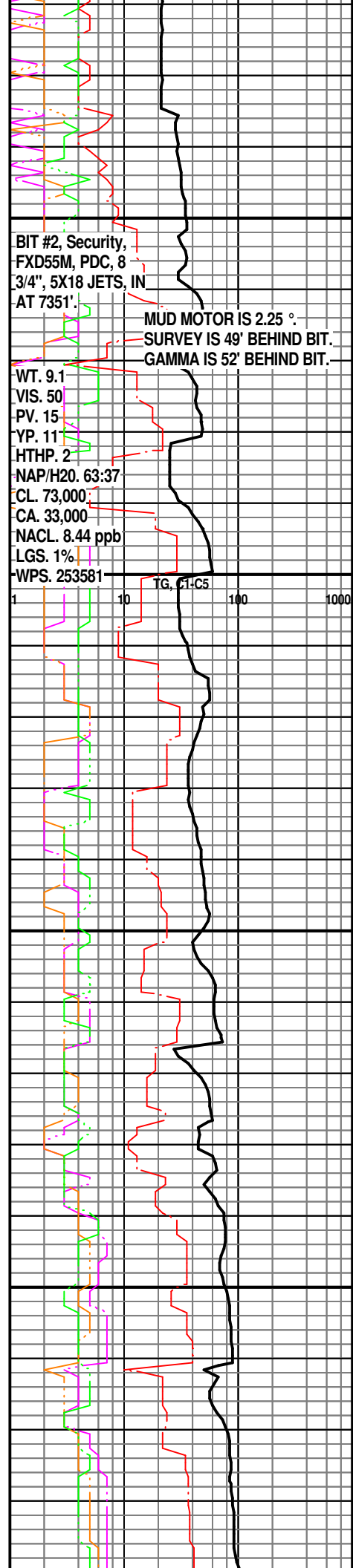
SH- GY-DK GY, BLKY-PLTY,
 WXY-SBWXY, CARB, V CALC,
 SFT-FRM.

SH- GY-DK GY, BLKY-PLTY,
 WXY-SBWXY, CARB, V CALC,
 SFT-FRM.

SH- GY-DK GY, BLKY-PLTY,
 SBWXY-WXY, SL SLTY, CARB,
 V CALC, SFT-FRM.

SH- GY-DK GY, BLKY-PLTY,
 SBWXY-WXY, SL SLTY, CARB,
 V CALC, SFT-FRM.

SH- DK GY, GY, BLKY-PLTY,
 SBWXY-WXY, TR SLTY, CARB,
 V CALC, SFT-FRM.

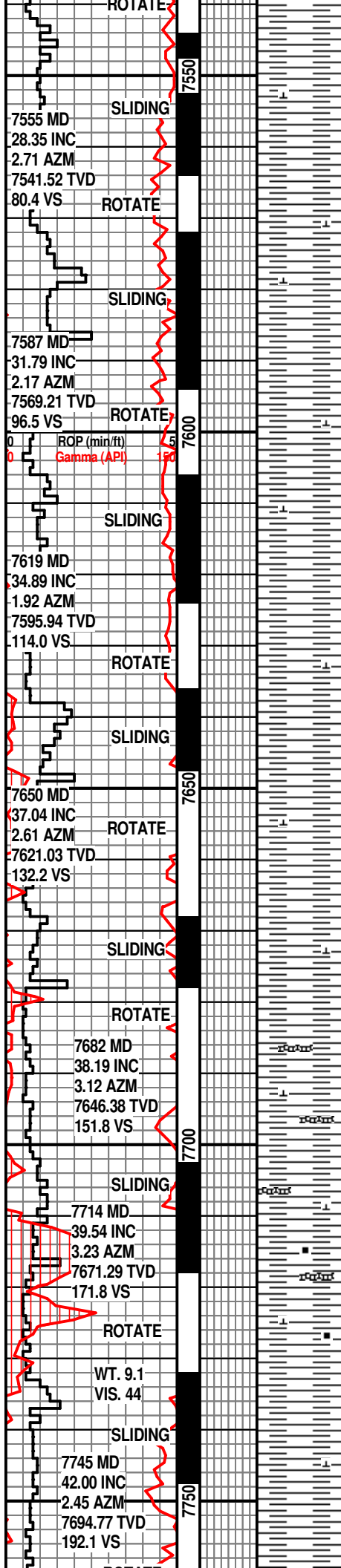


BIT #2, Security,
 FXD55M, PDC, 8
 3/4", 5X18 JETS, IN
 AT 7351'.

MUD MOTOR IS 2.25 °
 SURVEY IS 49' BEHIND BIT.
 GAMMA IS 52' BEHIND BIT.

WT. 9.1
 VIS. 50
 PV. 15
 YP. 11
 HTHP. 2
 NAP/H2O. 63:37
 CL. 73,000
 CA. 33,000
 NAACL. 8.44 ppb
 LGS. 1%
 WPS. 253581

TG. C1-C5



SH- GY-DK GY, SBWXY-WXY, SL SLTY, CARB, V CALC, SFT-FRM.

SH- DK GY, GY, BLKY-PLTY, SBWXY-WXY, TR SLTY, CARB, CALC, SFT-FRM.

SH- GY-DK GY, BLKY-PLTY, SBWXY-WXY IN PT, CARB, CALC, SFT-FRM.

SH- DK GY, GY, BLKY-PLTY, SBWXY-WXY, TR SLTY, CARB, CALC, SFT-FRM.

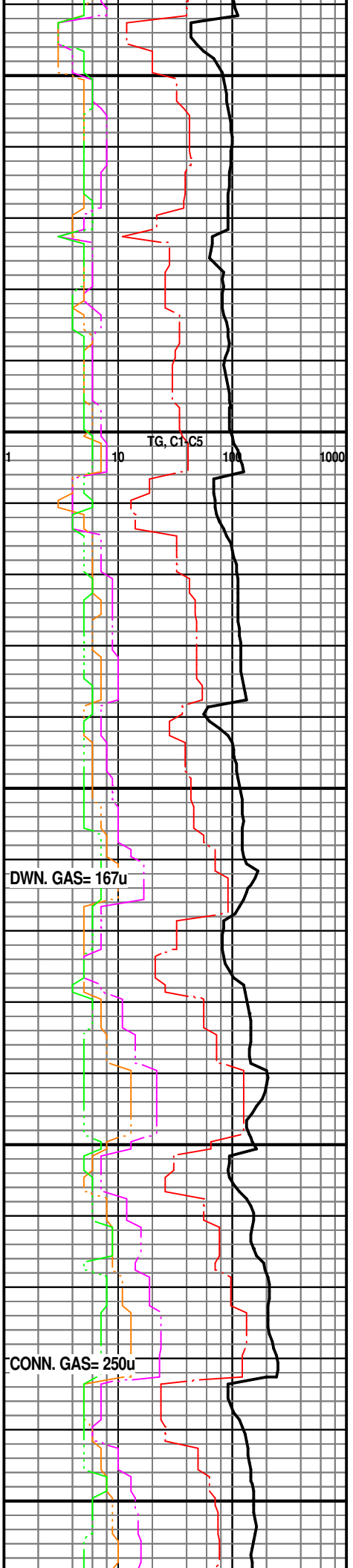
SH- GY-DK GY, BLKY-PLTY, SBWXY-WXY IN PT, CARB, CALC, SFT-FRM.

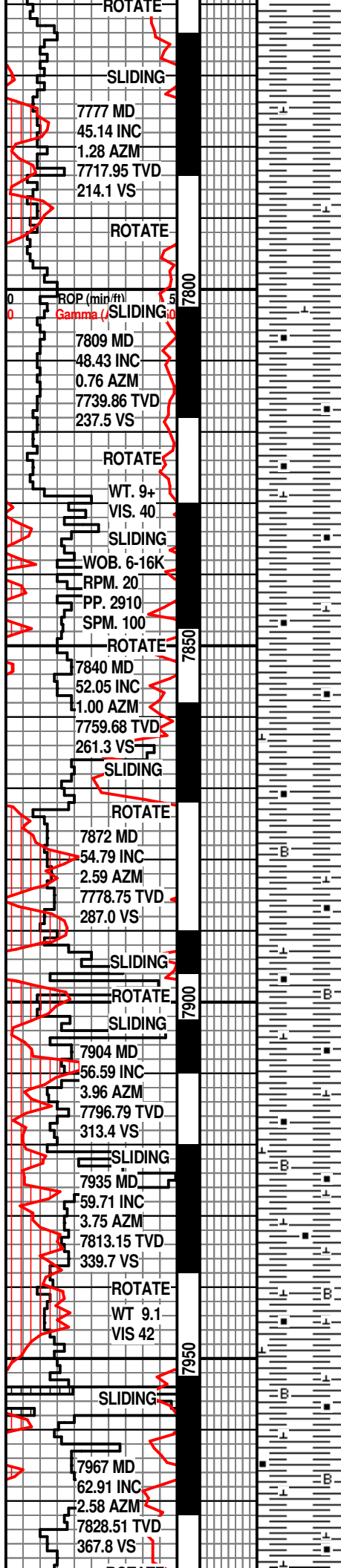
SH- DK GY, GY-M GY, BLKY-PLTY, SBWXY-WXY, CARB, CALC, SFT-FRM.

SH- DK GY, GY-M GY, BLKY-PLTY, SBWXY-WXY, CARB, CALC, SFT-FRM.

SH- GY-DK GY, BLKY-PLTY, SBWXY-WXY, CARB, CALC, SFT-FRM. W/ BENT- LT GY-LT BRN/GN.

SH- DK GY-GY, BLKY-PLTY, SBWXY, SL SLTY, SL CALC, CARB, SFT-FRM.





SH- DK GY-GY, BLKY-PLTY,
SBWXY, SL SLTY, SL CALC,
CARB, SFT-FRM.

SH- DK GY-GY, BLKY-PLTY,
SBWXY, SL CALC, CARB,
SFT-FRM.

SH- DK GY, BLKY-PLTY,
SBWXY-WXY, SME CARB
LAM/SPEC, CALC, SFT-FRM.

SH- DK GY-GY, BLKY-PLTY,
SBWXY, CALC, CARB,
SFT-FRM.

SH- DK GY-GY, BLKY-PLTY,
SBWXY, CALC, CARB W/CARB
LAM, SFT-FRM.

SH- DK GY-GY, BLKY-PLTY,
SBWXY, CALC, CARB W/CARB
LAM, SFT-FRM TR BENT.

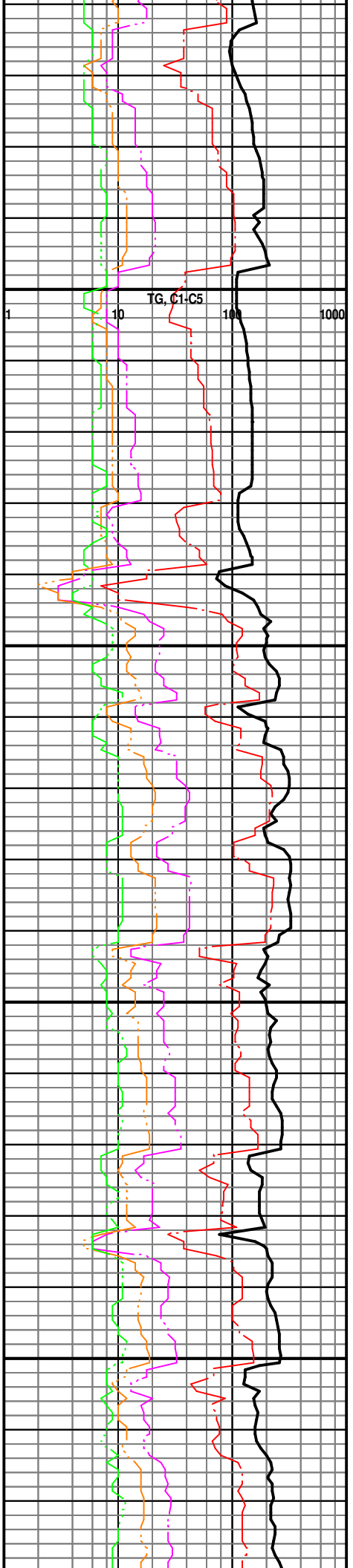
SH- DK GY-GY, BLKY-PLTY,
SBWXY, CALC, CARB ,
SFT-FRM TR BENT.

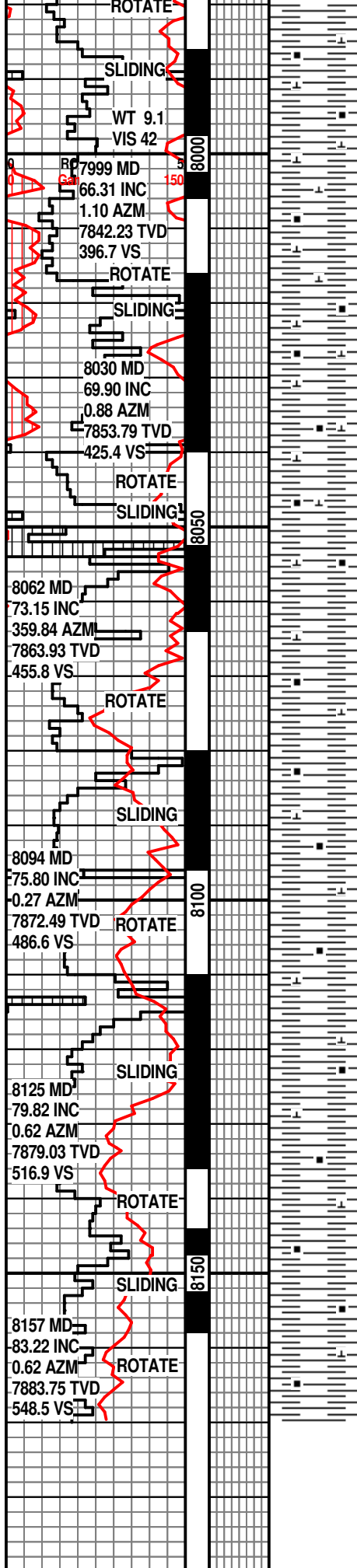
SH- DK GY-GY, BLKY-PLTY,
SBWXY, V CALC, CARB ,
SFT-FRM TR BENT.

SH- DK GY-GY, BLKY-PLTY,
SBWXY, V CALC, CARB ,
SFT-FRM TR BENT.

SH- DK GY-GY, BLKY-PLTY,
SBWXY, V CALC, CARB
W/CARB LAM, SFT-FRM TR
BENT.

6/14/2012





SH- DK GY-GY, BLKY-PLTY,
SBWXY, V CALC, CARB
W/CARB LAM, SFT-FRM TR
CALC INCL.

SH- DK GY-GY, BLKY-PLTY,
SBWXY, V CALC, CARB,
SFT-FRM TR CALC INCL &
PYR.

SH- DK GY-GY, BLKY-PLTY,
SBWXY, V CALC, CARB
W/CARB LAM, SFT-FRM .

SH- DK GY-GY, BLKY-PLTY,
SBWXY, V CALC, CARB,
SFT-FRM .

SH- DK GY-GY, BLKY-PLTY,
SBWXY, V CALC, CARB
W/CARB LAM, SFT-FRM .

**PUMP PROBLEMS,
SHORT TRIP AT 8098'.**

SH- DK GY-GY, BLKY-PLTY,
SBWXY, V CALC, CARB
W/CARB LAM, SFT-FRM .

SH- GY-DK GY, BLKY-PLTY,
SBWXY, V CALC, CARB LAM IN
PT, SFT-FRM.

SH- DK GY-BLK, GY,
BLKY-PLTY, SBWXY, V
CALC-LMY, CARB LAM,
SFT-FRM. TINY GAS BUBBLES
RELEASING FROM SMPL.

SH- DK GY-BLK, BLKY-PLTY,
SBWXY, LMY, CARB LAM,
CALC FL FRAC, SFT-FRM.

**PLEASE REFER TO
THE HORZ. LOG FOR
THE REMAINDER OF
THE WELL.**

TD BUILD SECTION AT 8305'
ON 6/15/12 AT 3:00AM.

