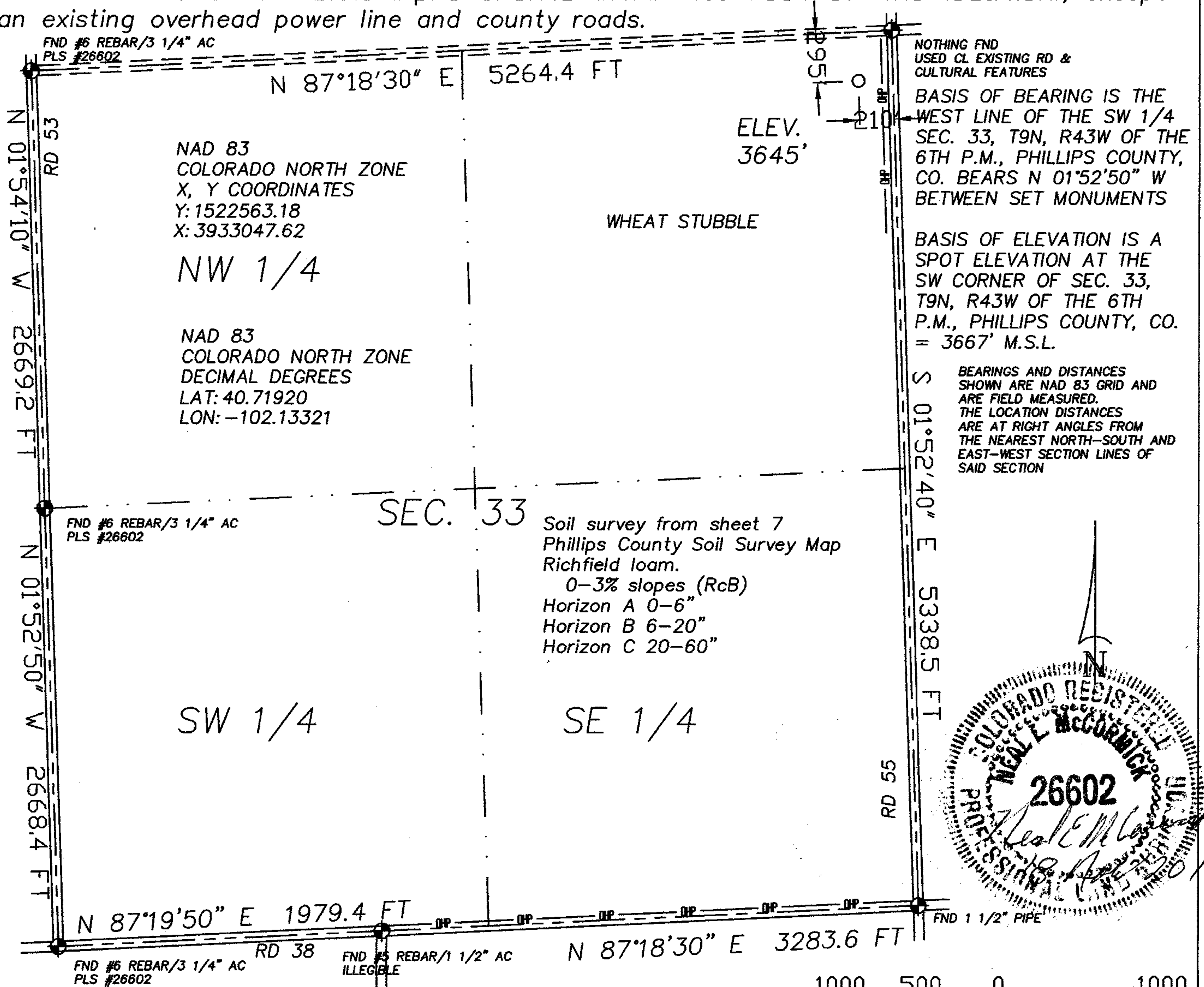


The accompanying plat is an accurate representation showing the location of a proposed well. This location may be described as a point 295 feet South of the North line, and 210 feet West of the East line of Section 33, Township 9 North, Range 43 West of the 6th P.M., Phillips County, Colorado.

The surface elevation at this point is 3645 feet above m.s.l.

Note: This is not a land survey plat.

There are no visible improvements within 400 feet of the location, except an existing overhead power line and county roads.



2.368 PDOP

GPS OPERATOR: KEVIN MCCORMICK

☀ Dual Producer

○ Location

==== Road

● Oil well

— Fence Line

== Trail

☀ Gas Well

— Half-Sec. Line

◆ Survey Monument

○ Dry Hole

--- Section Line



GREAT PLAINS  
SURVEYING, INC.

P.O. Box 296 Phone 970-774-3602  
Holyoke, CO 80734 Fax 970-774-3601

DATE OF FIELD WORK:

18 NOVEMBER 2011

DATE OF DRAWING:

18 NOVEMBER 2011

VIESELMAYER 943-33-41

NE 1/4 NE 1/4 SEC. 33, T9N, R43W

BLACK RAVEN ENERGY, INC.

PHILLIPS COUNTY, COLORADO

W339N43GPS

9402-272

PHOTOS BY GREAT PLAINS SURVEYING, INC.



Vieselmeyer 943-33-41  
NE ¼ NE ¼ SEC. 33, T9N, R43W  
Looking East  
18 November, 2011



Vieselmeyer 943-33-41  
NE ¼ NE ¼ SEC. 33, T9N, R43W  
Looking North  
18 November, 2011

Black Raven Energy, Inc.  
9402-272



PHOTOS BY GREAT PLAINS SURVEYING, INC.

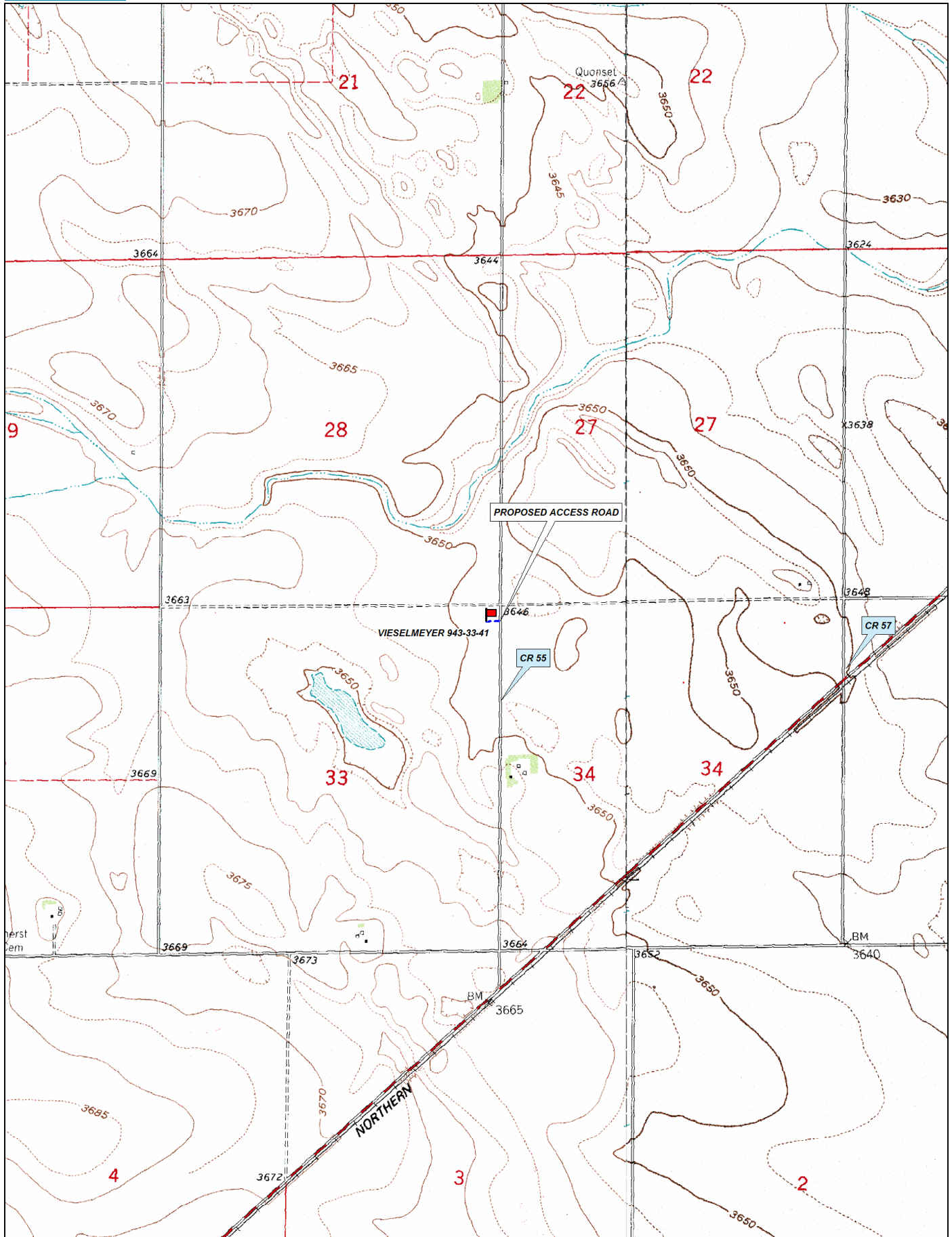


Vieselmeyer 943-33-41  
NE ¼ NE ¼ SEC. 33, T9N, R43W  
Looking West  
18 November, 2011

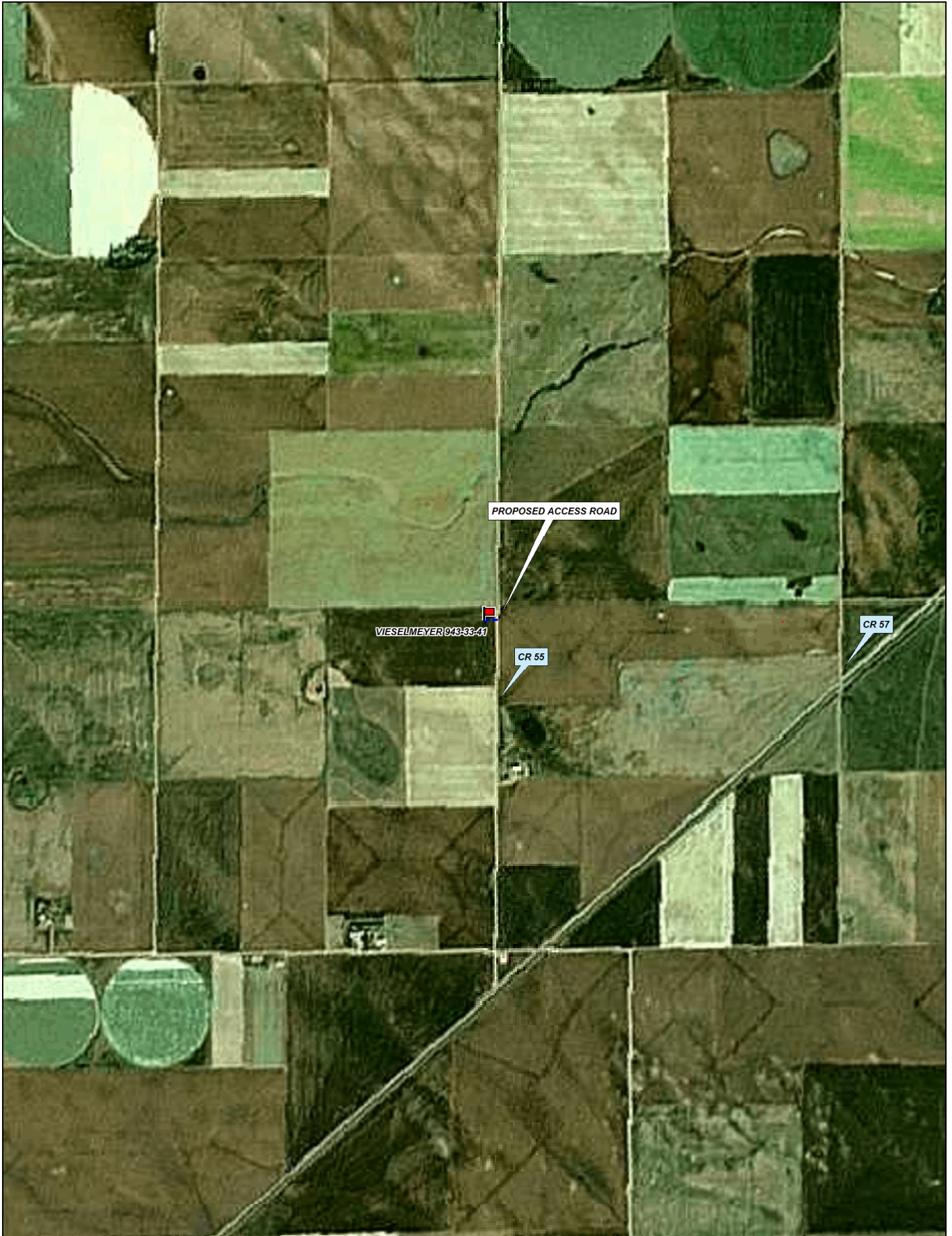


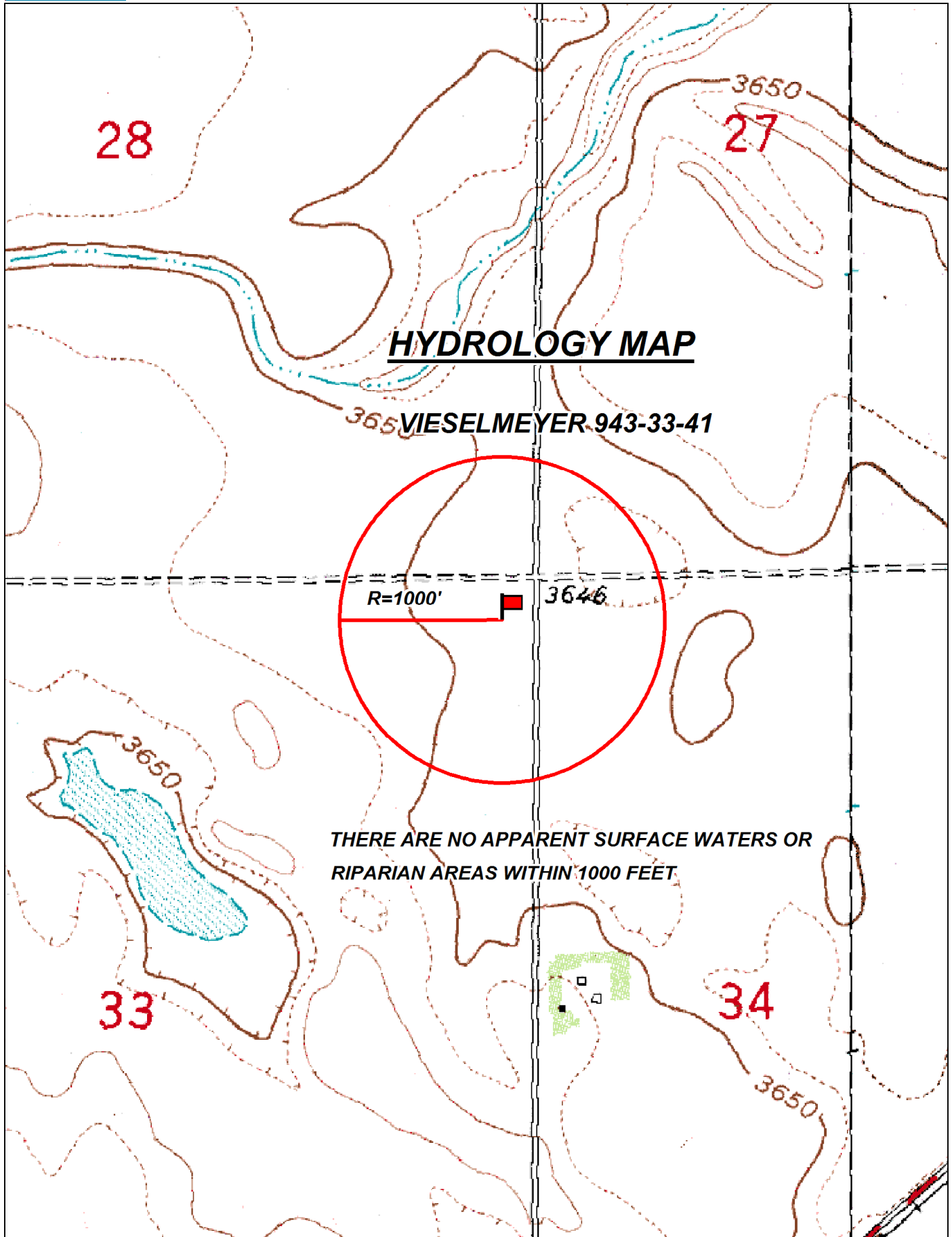
Vieselmeyer 943-33-41  
NE ¼ NE ¼ SEC. 33, T9N, R43W  
Looking South  
18 November, 2011

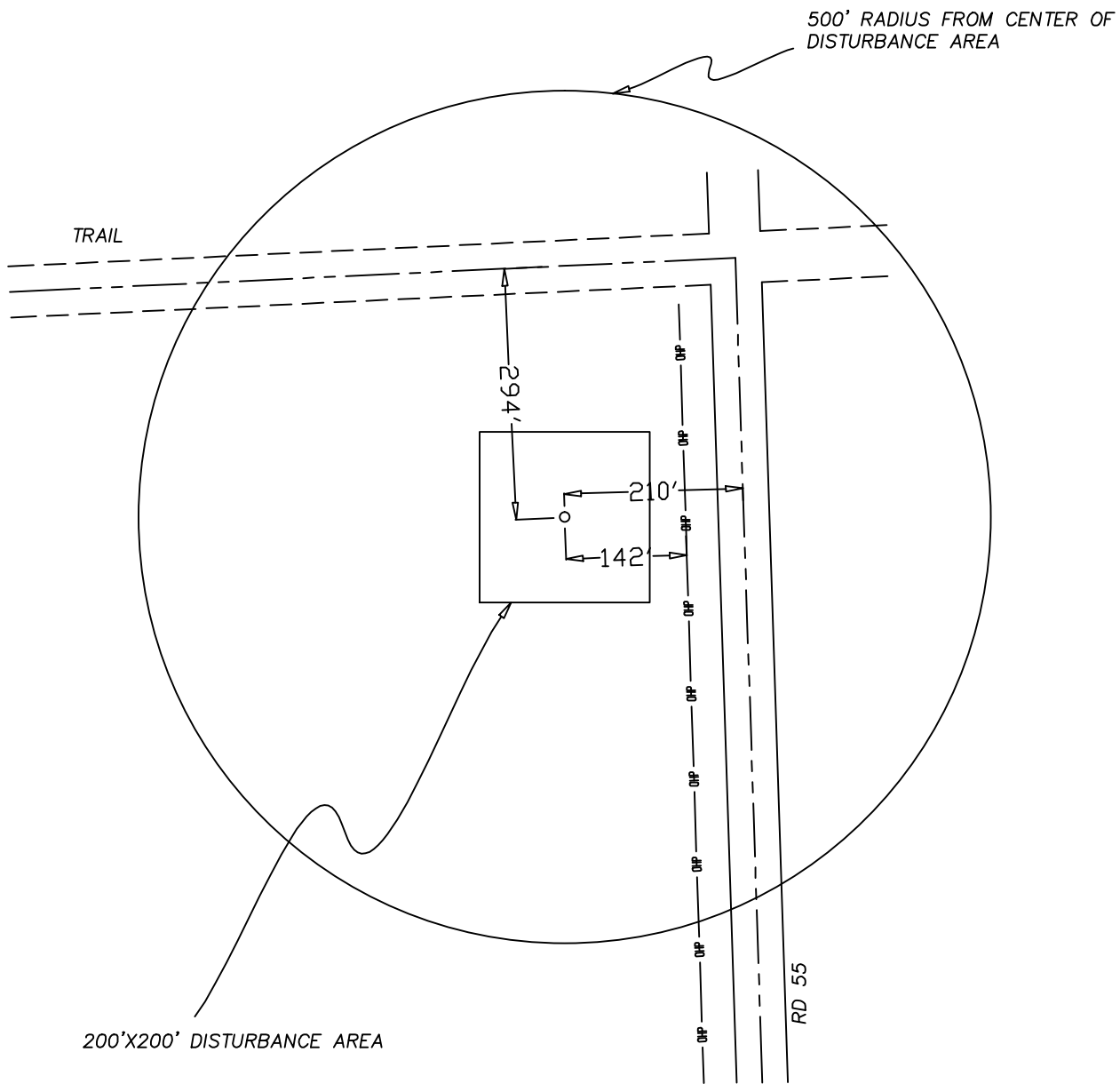
Black Raven Energy, Inc.  
9402-272



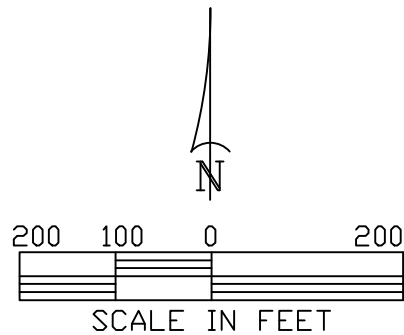









- Location
- x — Fence Line
- · · — Half-Sec. Line
- - - - Section Line
- OP — Overhead Powerline



 <p>GREAT PLAINS SURVEYING, INC.</p> <p>20575 Co. Rd. 21 Haxtun, CO 80731</p> <p>Phone 970-774-3602 Fax 970-774-3601</p>	LOCATION DRAWING
	VIESELMAYER 943-33-41
	SCALE 1" = 200'
	PHILLIPS COUNTY, COLORADO

L339N43GPS

9402-272

# Map Unit Description

Phillips County, Colorado

## **RcB Richfield loam, 0 to 3 percent slopes**

### **Setting**

Landscape: Uplands  
Elevation: 3600 to 4400 feet  
Mean annual precipitation: 14 to 18 inches  
Mean annual air temperature: 46 to 52 degrees F  
Frost-free period: 135 to 160 days

### **Composition**

Richfield and similar soils: 85 percent  
Minor components: 15 percent

### **Description of Richfield**

#### **Setting**

Landform: Lakebeds  
Down-slope shape: Linear  
Across-slope shape: Linear  
Parent material: Clay loam sandy

#### **Properties and Qualities**

Slope: 0 to 3 percent  
Drainage class: Well drained  
Capacity of the most limiting layer to transmit water (Ksat): Moderately high (0.20 to 0.60 in/hr)  
Frequency of flooding: None  
Frequency of ponding: None  
Calcium carbonate maximum: 15 percent  
Gypsum maximum: 0 percent  
Available water capacity: High (about 11.0 inches)

#### **Interpretive Groups**

Land capability classification (irrigated): 2e  
Land capability (non irrigated): 3e  
Ecological site: Loamy Plains (R072XY001CO)

#### **Typical Profile**

0 to 6 inches: loam  
6 to 20 inches: clay loam  
20 to 60 inches: very fine sandy loam

### **Minor Components**

#### **Rago**

Percent of map unit: 5 percent

#### **Kuma**

Percent of map unit: 4 percent

#### **Weld**

Percent of map unit: 4 percent

#### **Aquic haplustolls**

Percent of map unit: 2 percent  
Landform: Depressions