

ATLAS RESOURCES, LLC

Date: 1/25/2012
 Prepared by: Maddie Lariviere
 Lease: FULSCHER STATE
 Well Number: 943-16-44
 API: 05-155-06104-00
 Location: SESE, Sec. 16 T9N-R43W
 BHL:
 Field: Amherst
 Unit:
 County: Phillips
 State: Colorado
 GL: 3646
 KB: 3658
 Spud Date: 1/25/2012
 Completion date: 7/12/2012
 First gas sales: 4/5/2012

WI
 NRI
 Surface fee
 Mineral fee

SURVEYS:
 500 0.88
 1000 0.26
 1500 1.39
 2000 1.32
 2300 1.56
 2580 1.5

Geological tops
 Surface 3646
 Pierre Shale 390
 Sharron Springs 2326
 Niobrara Chalk 2374
 TD 2658

A-sect Wellhead Inc LM-70 7 X 4 1/2 1500# Screw on mandrel
 B-sect R&M LM-45 4 1/2 X 2 3/8 1500# Screw on mandrel
 Tree

Surface Cement

Cement w/ 115 sk Portland 1/11 ASTM C 150 Cement
 and displace w/713 gal of water Cir 5 brls cement to
 the pit. 50 ft cement left in the 7" sp. Pumped by Schaal
 drilling. Plug down 12:30 PM 1/25/2012

Producing ZONE Niobrara

Hole Size 9 7/8
 Surf Casing 7" 17# 12 jts meas 459.97
 Shoe 471.97

Hole Size 6 1/4
 Prod csg 4 1/2 11.6# 75 jts meas: 2630.02

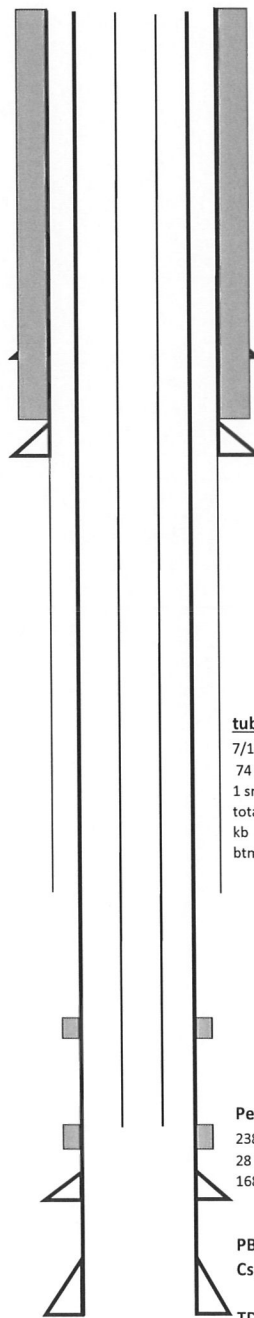
TOC 1,860

Cement Design

Rig up ADT Cementers and cement
 w/75 sks type 1 neat cement .
 Displace w/40.2brls water.
 Plug down @7:30 am on 1/30/2012
 held ok

Stimulation Treatment

Frac Niobrara with Maverick Stimulation using 28 # crosslinked gel
 50,000 #16/30 Daniels sand and 50,220 # 12/20 Texas Gold sand for a
 total of 100,220 # sand. 60.18 tons CO2. 551 BLWTR. 5 MIN- 613 PSI
 10 MIN-605 PSI. 15 MIN -596 PSI MAX RATE 14.2 AVG RATE 11.5
 MAX PSI- 1447 AVG PSI 666 isip-680 psi



tubing detail

7/12/2012
 74 jts 2 3/8 2421.21
 1 sn 2 3/8 1.10
 total tbg 2422.31
 kb 12.00
 btm tbg @ 2434.31

Perforations

2380-2408 W/ 6SPF
 28 TOTAL FT
 168 TOTAL SHOTS

PBTD 2,598.87
 Csg shoe 2,642.03
 TD 2,658