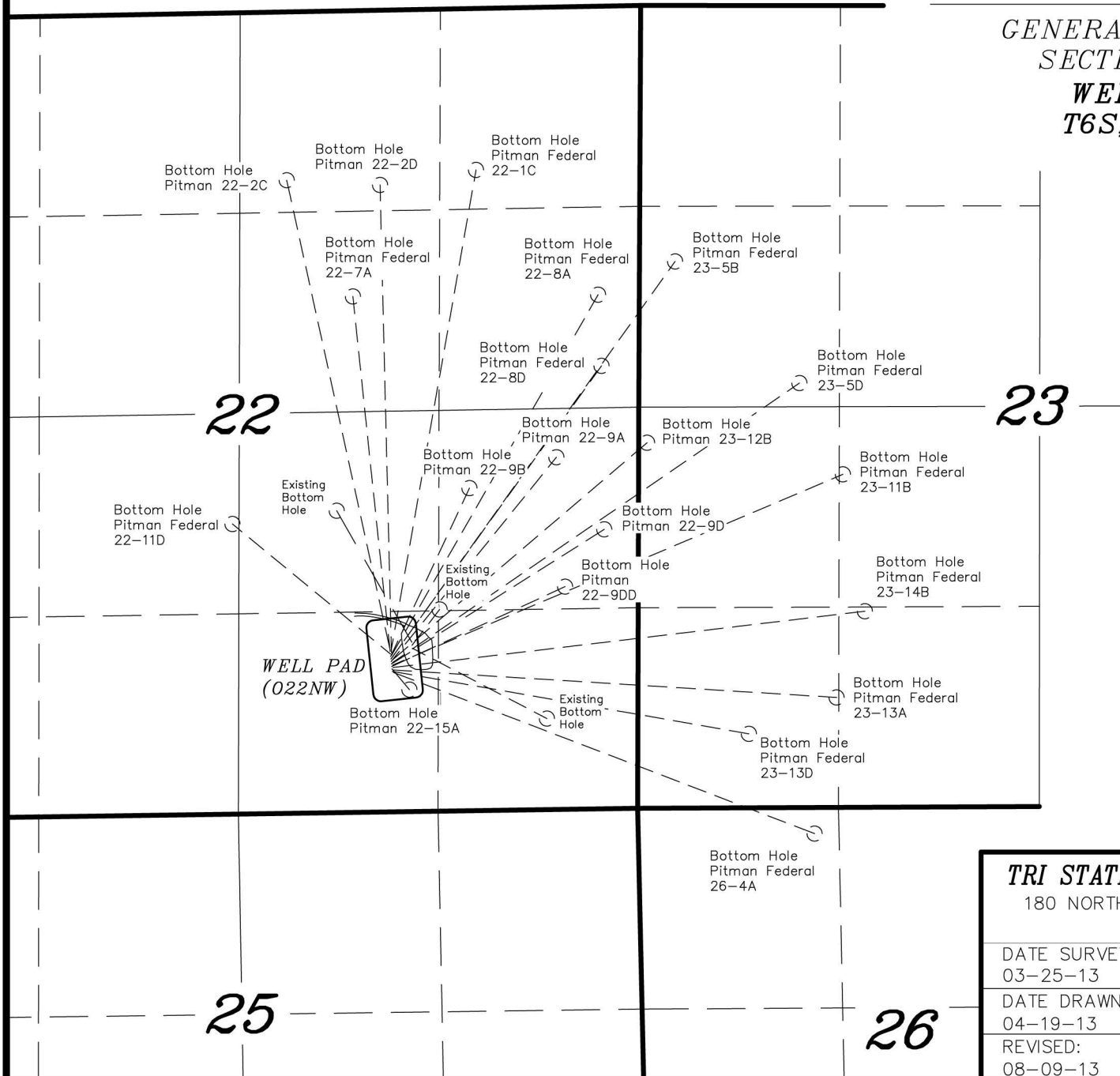


T6S, R93W, 6th P.M.

ENCANA OIL & GAS (USA) INC

**GENERAL MULTI WELL PLAN
SECTION DRILLING MAP**

**WELL PAD (022NW)
T6S, R93W, 6th P.M.**



TRI STATE LAND SURVEYING & CONSULTING

180 NORTH VERNAL AVE. — VERNAL, UTAH 84078
(435) 781-2501

DATE SURVEYED: 03-25-13	SURVEYED BY: C.D.S.	SHEET 1 OF 8
DATE DRAWN: 04-19-13	DRAWN BY: M.W.	
REVISED: 08-09-13 M.W.	SCALE: 1" = 1000'	