

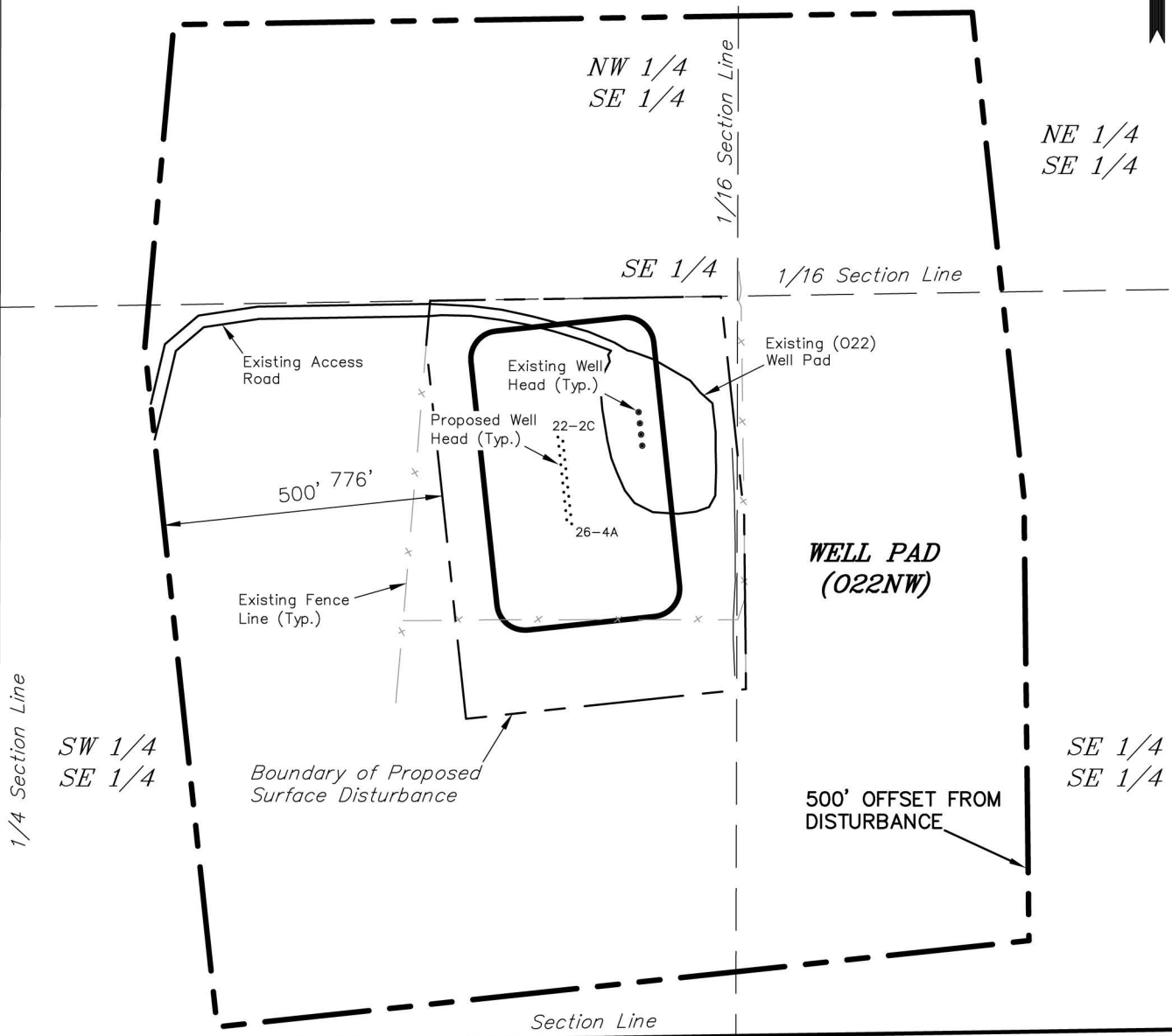
# ENCANA OIL & GAS (USA) INC

## SURFACE DISTURBANCE AREA

### WELL PAD (022NW)

Section 22, T6S, R93W, 6th P.M.

**Sec 22**



Feature	Reference point: Distance from Pitman 22-2C Well Head
Building (Shed)	1,024'
Building Unit	1,155'
High Occupancy Building Unit	>5,280'
Designated Outside Activity Area	>5,280'
Public Road	764'
Above Ground Utility	1,024'
Railroad	>5,280'
Property Line	247'

SURVEYED BY: C.D.S. DATE SURVEYED: 03-26-13  
 DRAWN BY: M.W. DATE DRAWN: 04-19-13  
 SCALE: 1" = 300' REVISED: M.W. 08-09-13

**Tri State**  
 Land Surveying, Inc.  
 180 NORTH VERNAL AVE. VERNAL, UTAH 84078  
 (435) 781-2501

SHEET  
 2u  
 of 8