

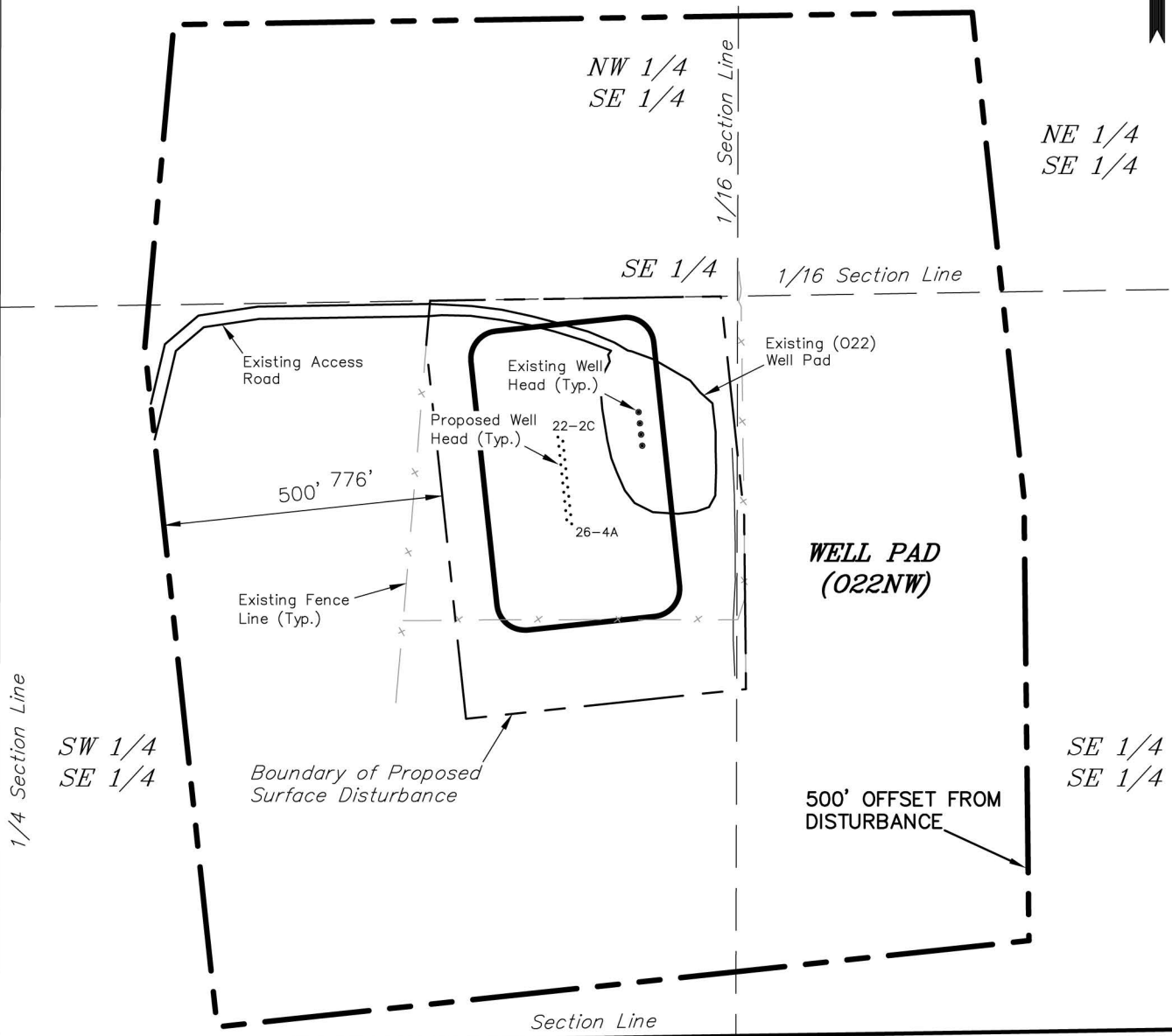
ENCANA OIL & GAS (USA) INC

SURFACE DISTURBANCE AREA

WELL PAD (022NW)

Section 22, T6S, R93W, 6th P.M.

Sec 22



Feature	Reference point: Distance from Pitman 22-2C Well Head
Building (Shed)	1,024'
Building Unit	1,155'
High Occupancy Building Unit	>5,280'
Designated Outside Activity Area	>5,280'
Public Road	764'
Above Ground Utility	1,024'
Railroad	>5,280'
Property Line	247'

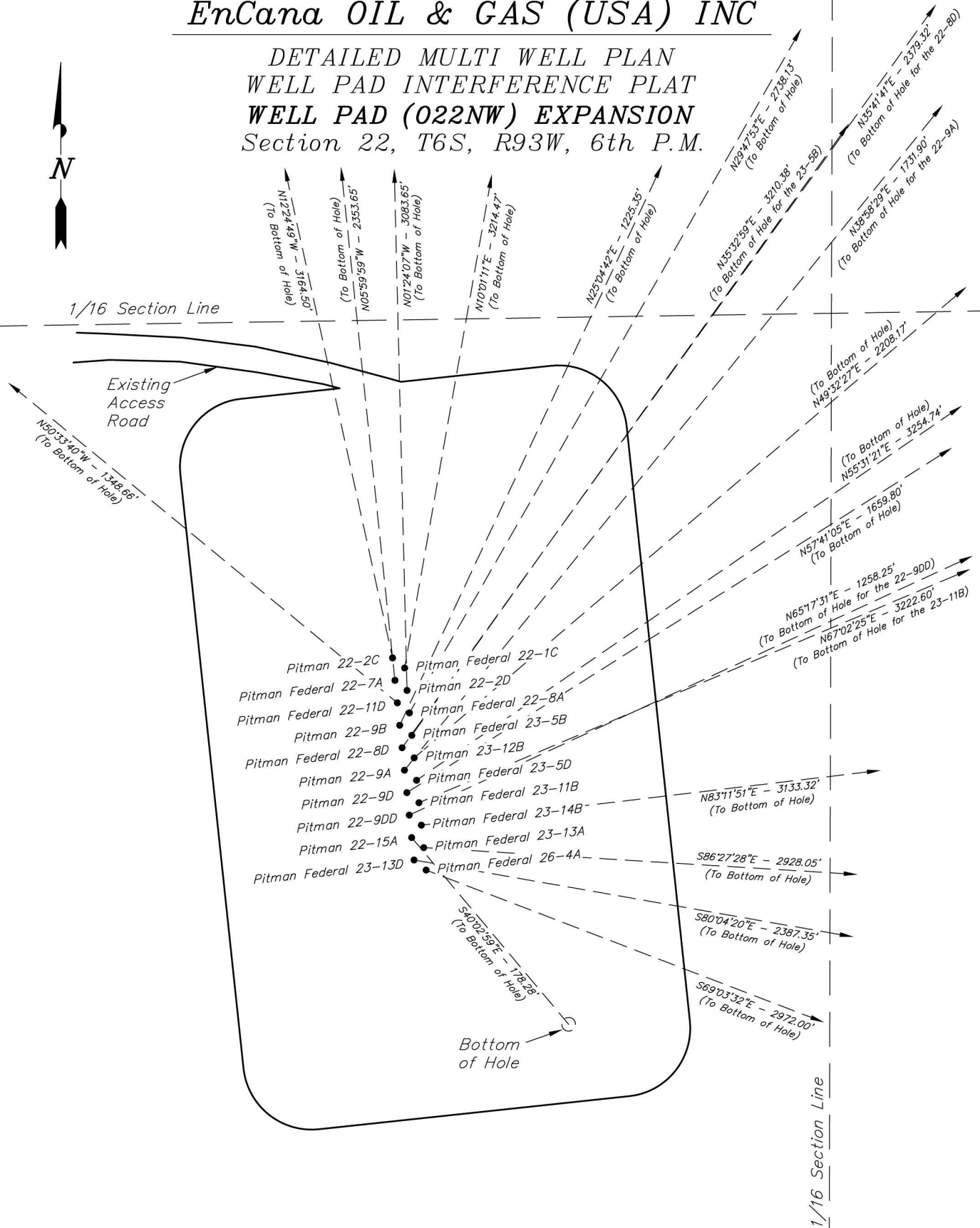
SURVEYED BY: C.D.S. DATE SURVEYED: 03-26-13
 DRAWN BY: M.W. DATE DRAWN: 04-19-13
 SCALE: 1" = 300' REVISED: M.W. 08-09-13

Tri State
 Land Surveying, Inc.
 180 NORTH VERNAL AVE. VERNAL, UTAH 84078
 (435) 781-2501

SHEET
 2u
 of 8

EnCana OIL & GAS (USA) INC

DETAILED MULTI WELL PLAN WELL PAD INTERFERENCE PLAT WELL PAD (022NW) EXPANSION Section 22, T6S, R93W, 6th P.M.



SURVEYED BY: C.D.S.	DATE SURVEYED: 03-25-13
DRAWN BY: M.W.	DATE DRAWN: 04-19-13
SCALE: 1" = 100'	REVISED: M.W. 08-09-13

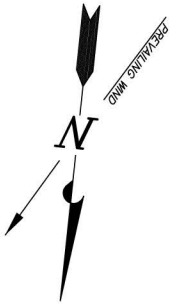
Tri State
Land Surveying, Inc.
180 NORTH VERNAL AVE. VERNAL, UTAH 84078
(435) 781-2501

SHEET
3a
OF 8

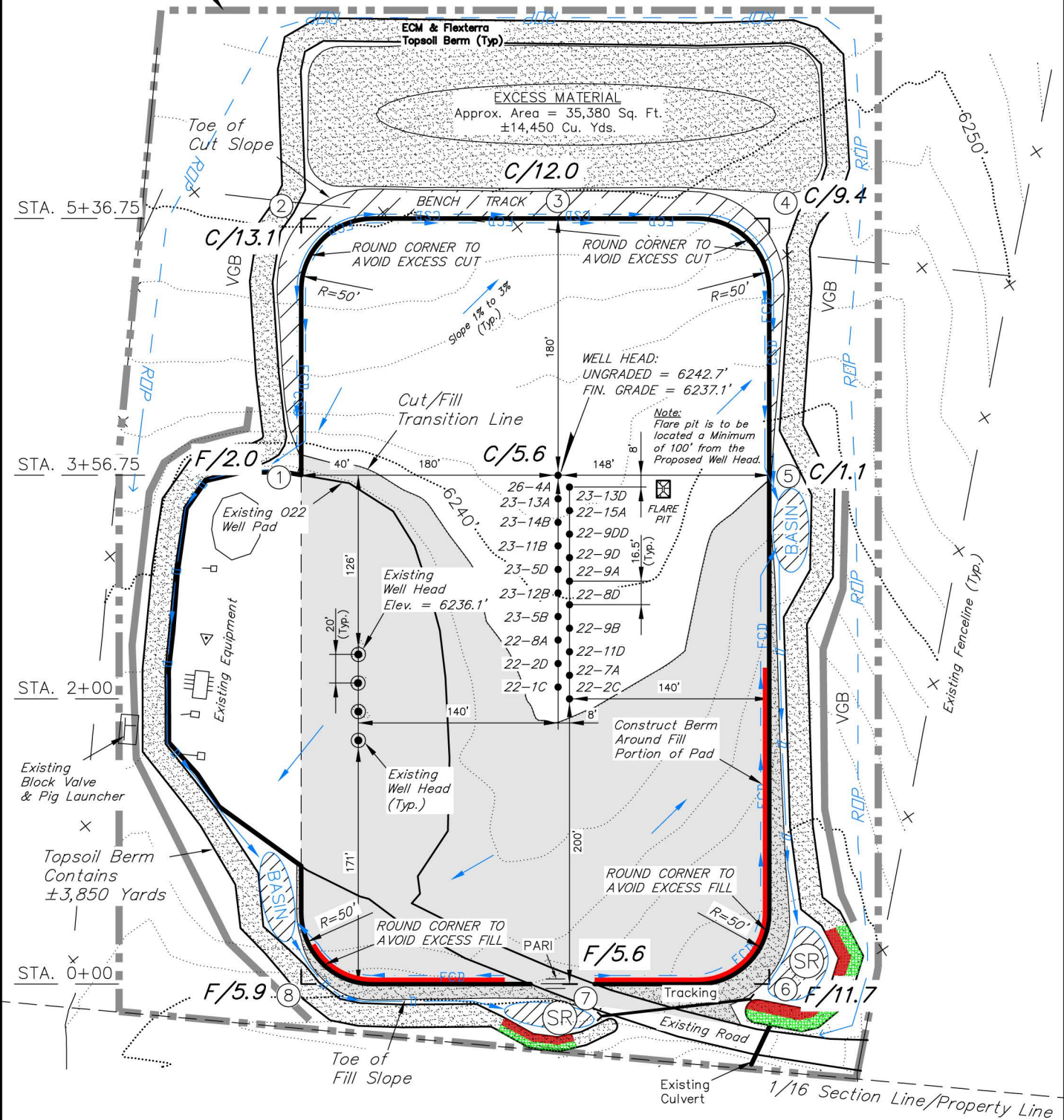
ENCANA OIL & GAS (USA) INC

LOCATION LAYOUT
WELL PAD (022NW)

Section 22, T6S, R93W, 6th P.M.



Approx. Disturbance
Boundary
±8.75 Acres



- NOTES:**
- (1) Slope Track and/or Terrace All Slopes and Piles
 - (2) Erosion Control & Seed Topsoil Stockpile
 - (3) Erosion Control & Seed Outside Slopes of Stockpiles
 - (4) Slope away from Substructure Areas 1% to 3% to Flow Control Ditch on Entire Pad
 - (5) When Possible the Cut and Fill Slopes Directly Behind the Proposed Production Equipment Should be Reclaimed with 3:1 Slopes and Topsoil Spread During Pad Construction.
 - (6) BMP Selection and Position may Change Depending on Actual Conditions Encountered During the Construction Process.
 - (7) All CMP's Shall have Inlet and Outlet Protection.
 - (8) All BMP's to be constructed to EnCana Oil & Gas (USA) Inc. BMP Manual's Specifications.

NOTE:
The topsoil & waste material area is calculated as being mounds containing 18,300 cubic yards of dirt (a 15% fluff factor is included). The mound areas are calculated with push slopes of 2.5:1 & fall slopes of 2.5:1.

- LEGEND:**
- PARI = PAD/ACCESS ROAD INTERFACE
 - SR = SEDIMENT RESERVOIR
 - ST = SEDIMENT TRAP
 - R.O.P. = RUN-ON PROTECTION
 - = PERIMETER CONTROL (WATTLES)
 - CDM = CHECK DAM
 - FCD = FLOW CONTROL DITCH
 - ECB = EROSION CONTROL BLANKET
 - D = FILL DIVERSION TO SEDIMENT TRAP
 - SL = SLASH PILE
 - CSD = CUT SLOPE DIVERSION (BERM TOE OF CUT SLOPE)
 - VGB = VEGETATION BUFFER (UNDISTURBED LAND INSIDE PC)
 - SEED, ECB & FLEX
 - = LEVEL SPREADER

SURVEYED BY: C.D.S.	DATE SURVEYED: 03-25-13
DRAWN BY: M.W.	DATE DRAWN: 04-01-13
SCALE: 1" = 100'	REVISED: M.W. 08-09-13

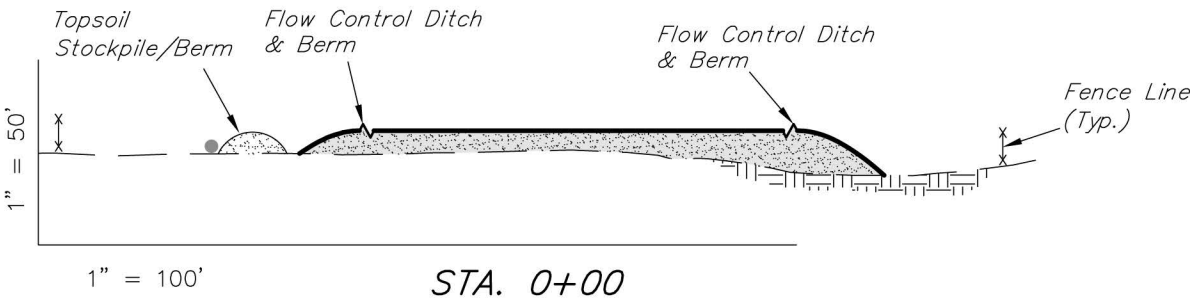
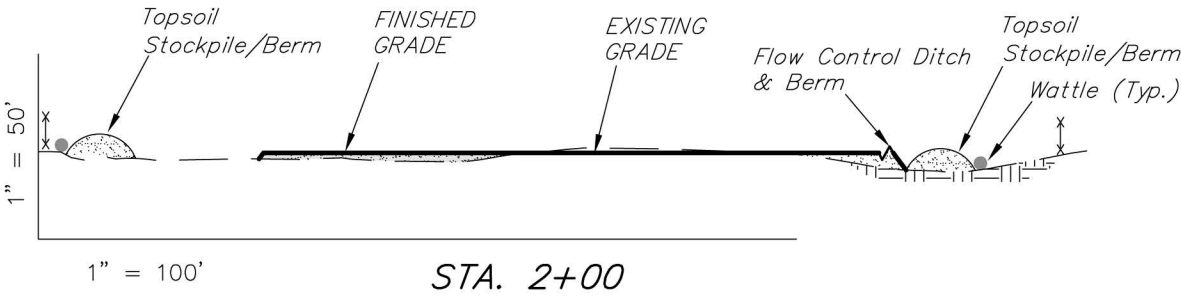
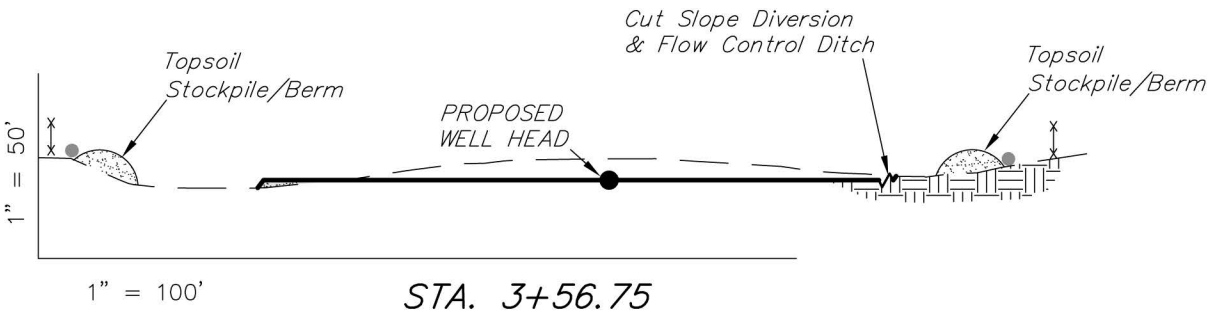
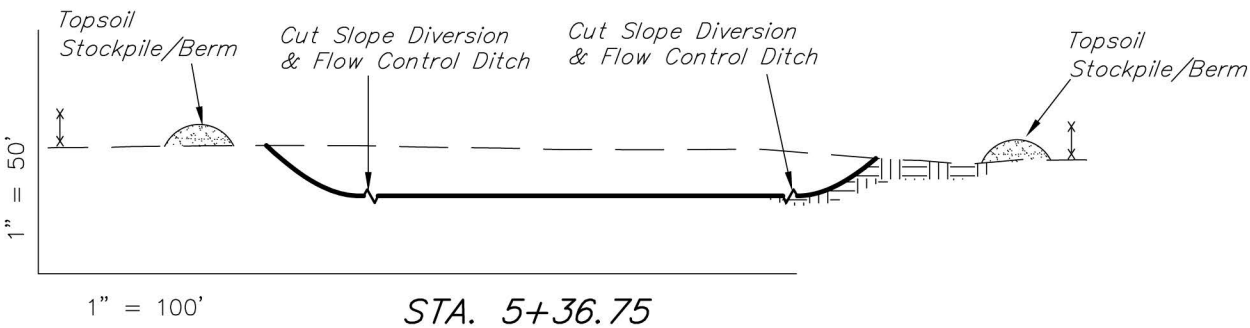
Tri State
Land Surveying, Inc.
180 NORTH VERNAL AVE. VERNAL, UTAH 84078
(435) 781-2501

SHEET
4
OF 8

ENCANA OIL & GAS (USA) INC

CROSS SECTIONS
WELL PAD (022NW)

Section 22, T6S, R93W, 6th P.M.



NOTE:
UNLESS OTHERWISE NOTED
CUT SLOPES ARE AT 1.5:1
FILL SLOPES ARE AT 1.5:1

ESTIMATED EARTHWORK QUANTITIES (No Shrink or swell adjustments have been used) (Expressed in Cubic Yards)				
ITEM	CUT	FILL	6" TOPSOIL	EXCESS
PAD	21,450	8,880	Topsoil is not included in Pad Cut	12,570
PIT	N/A	N/A		N/A
TOTALS	21,450	8,880	3,350	12,570

SURVEYED BY: C.D.S.	DATE SURVEYED: 03-25-13
DRAWN BY: M.W.	DATE DRAWN: 04-19-13
SCALE: 1" = 100'	REVISED: M.W. 08-09-13

Tri State
Land Surveying, Inc.
180 NORTH VERNAL AVE. VERNAL, UTAH 84078

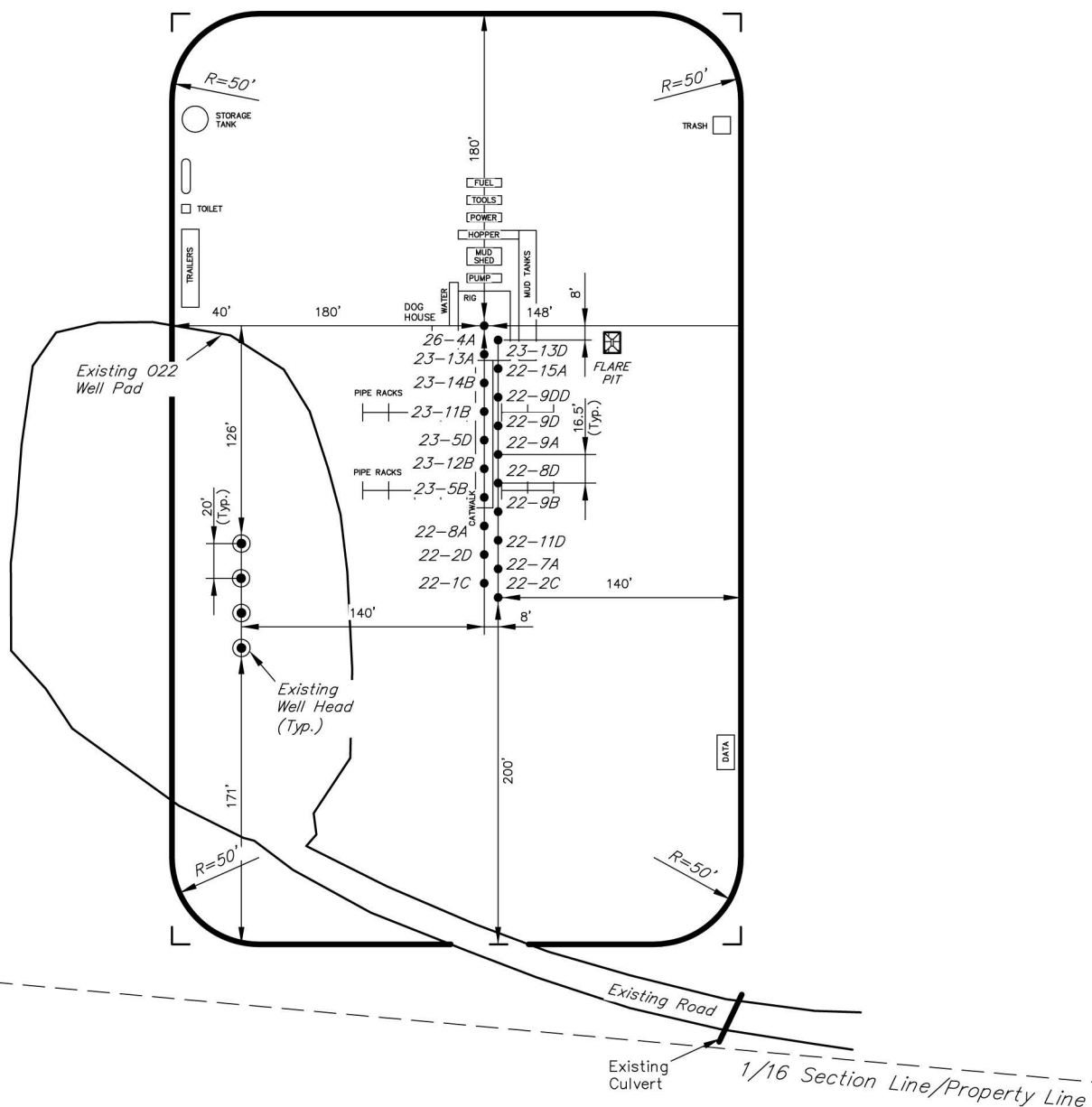
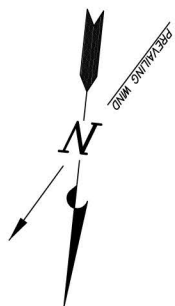
(435) 781-2501

ENCANA OIL & GAS (USA) INC

TYPICAL RIG LAYOUT

WELL PAD (022NW)

Section 22, T6S, R93W, 6th P.M.



SURVEYED BY: C.D.S.	DATE SURVEYED: 03-25-13
DRAWN BY: M.W.	DATE DRAWN: 04-19-13
SCALE: 1" = 100'	REVISED: M.W. 08-09-13

Tri State
Land Surveying, Inc.
180 NORTH VERNAL AVE. VERNAL, UTAH 84078
(435) 781-2501

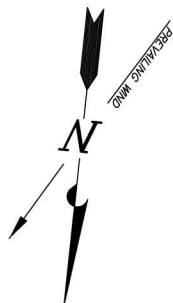
SHEET
6
OF 8

ENCANA OIL & GAS (USA) INC

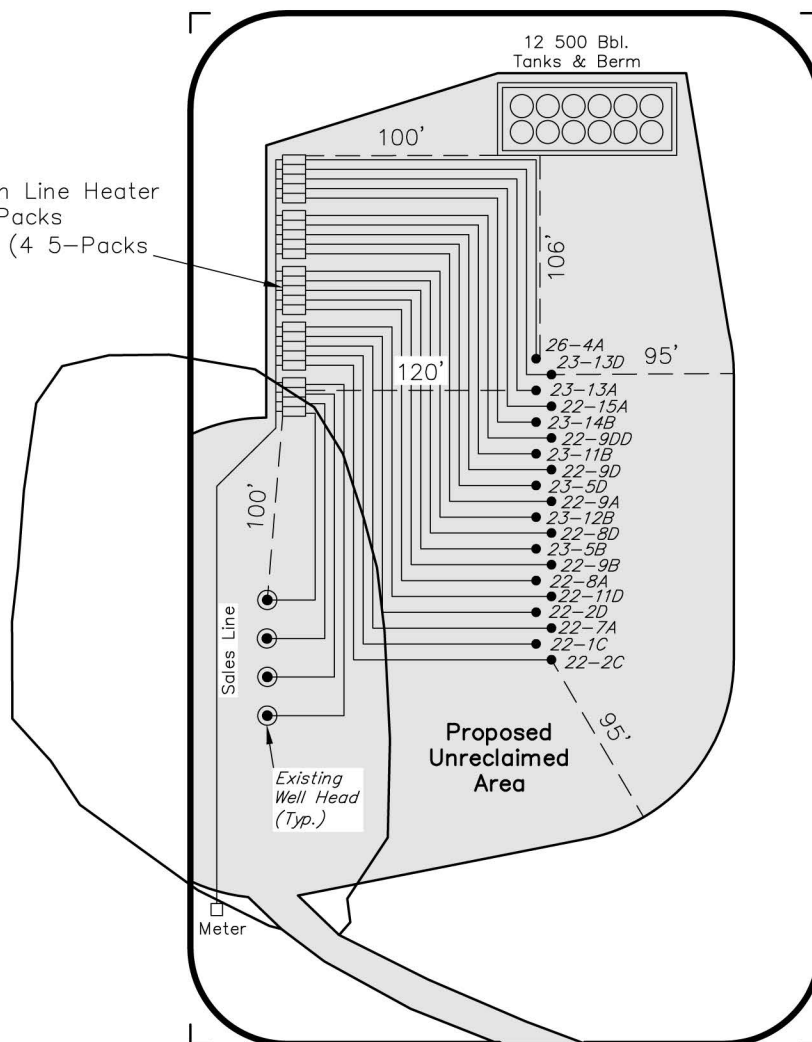
PRODUCTION SCHEMATIC

WELL PAD (022NW)

Section 22, T6S, R93W, 6th P.M.



24 Combination Line Heater
& Production Packs
2 Mil. CF/DAY (4 5-Packs
& 1 4-Pack)



Notes:

1. Reclaimed area to include seeding of approved vegetation and sufficient storm water management system.
2. Reclaimed Pad to have storm water Management BMP's Per Encana Oil & Gas (USA) Inc. BMP Manual.
3. Actual Equipment Layout and Reclaimed Pad Surface Area May Change do to Production Requirements or Site Conditions.

DISTURBED AREA:

TOTAL DISTURBED AREA = 8.75 ACRES

TOTAL RECLAIMED AREA = 6.31 ACRES

UNRECLAIMED AREA = 2.44 ACRES

SURVEYED BY: C.D.S.	DATE SURVEYED: 03-25-13
DRAWN BY: M.W.	DATE DRAWN: 04-19-13
SCALE: 1" = 100'	REVISED: M.W. 08-09-13

Tri State
Land Surveying, Inc.
180 NORTH VERNAL AVE. VERNAL, UTAH 84078
(435) 781-2501

SHEET
7
OF 8

ENCANA OIL & GAS (USA) INC

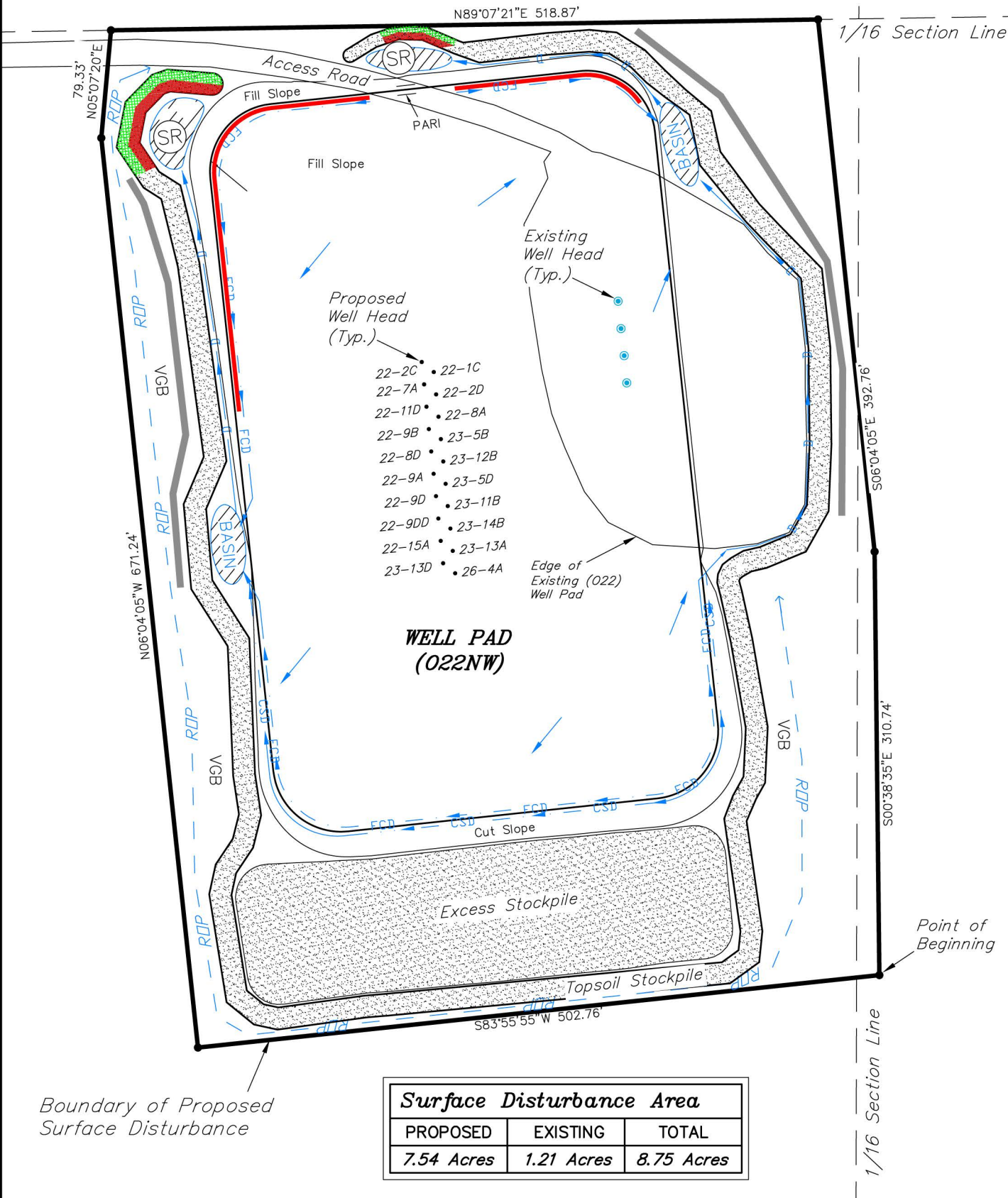
SURFACE DISTURBANCE AREA

WELL PAD (022NW)

Section 22, T6S, R93W, 6th P.M.



Sec. 22
SE 1/4



Boundary of Proposed
Surface Disturbance

BASIS OF BEARINGS NOTE:

Basis of Bearings is the East line of the SE 1/4 which is taken from Global Positioning Satellite observations to bear N00°09'01"E a measured distance of 2644.65'.

CORNER TIE NOTE:

The Southeast corner of the Disturbance Boundary (Point of Beginning) bears N65°10'47"W 1430.32' from the Southeast Corner of Section 22.

SURVEYED BY:	C.D.S.	DATE SURVEYED:	03-25-13
DRAWN BY:	M.W.	DATE DRAWN:	04-19-13
SCALE:	1" = 100'	M.W.	08-09-13

Tri State
Land Surveying, Inc.
180 NORTH VERNAL AVE. VERNAL, UTAH 84078

(435) 781-2501