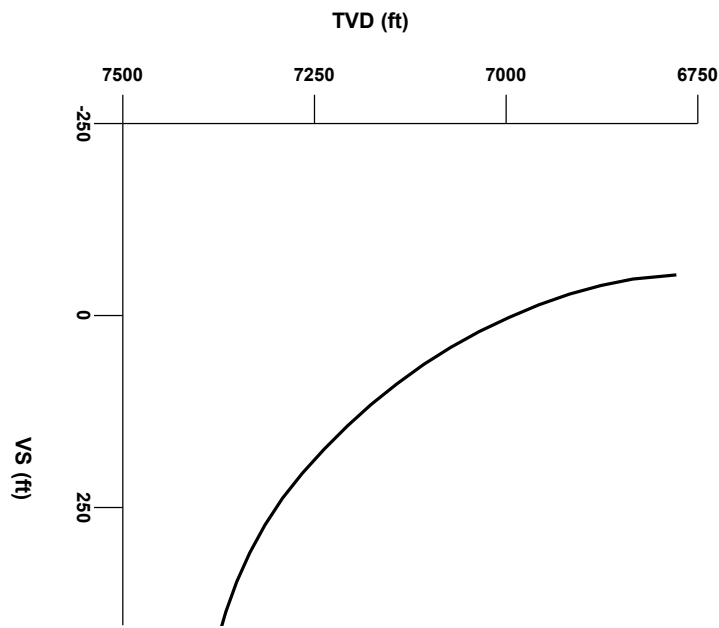


LOG created using Lplot VH Version 3.0, December 19, 2012, Copyright (C) 1999-2009 Pason Systems Corp.

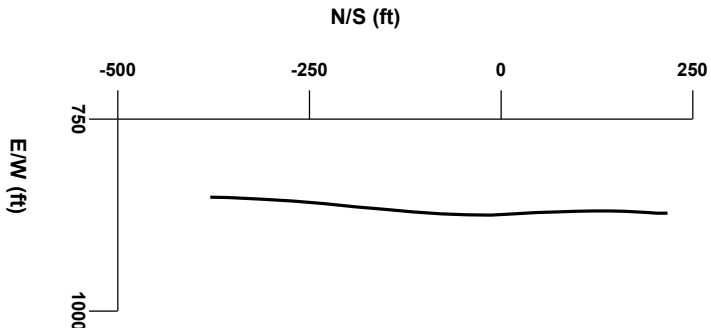
OPERATOR: ANADARKO PETROLEUM INC.
WELL: RAYMOND 38C-29HZ
LOCATION: NENE SEC 29, T3N, R66W, 6TH PM
COUNTY: WELD
STATE: COLORADO
SPOT: 253' FNL, 1266' FEL
ELEVATION: GL 4926' / KB 4943'
FIELD: WATTENBERG - 90750
SPUD DATE: 10/11/2012
TD DATE: 10/16/2012
DATES LOGGED: 10/14/2012 - 10/16/2012
DEPTHS LOGGED: 6833' - 7837'
LOGGERS: RIKKI WITHERSPOON, ROBERT DAVIS
DRILLING FLUID: FW LSND
DRILLING RIG: XTREME 8
API: 05-123-35848
LOG TYPE: HORIZONTAL
SCALE: 1:240 (5 inches per 100 feet)
REMARKS: WELLSITE GEOLOGICAL SERVICES PROVIDED BY COLUMBINE LOGGING INC.

 LOGGING BEGAN AT KOP
 NO VERTICAL LOG



Survey Elevation

Survey Plan



Chalk

Limestone

Marl

Silty Shale

Casing

Casing

Connection

Connection Gas

Midnight Depth

Normal Fault

ENGINEERING SYMBOLS

GAS	
0	UNITS 7000
C1	
0	PPM 700000
C2	
0	PPM 700000
C3	
0	PPM 700000
C4	
0	PPM 700000
CO2	
0	PPM 700000

ROP	
0	MIN/FT 5
C1: 83.9%	
C2: 7.5%	
C3: 7.6%	
C4: 0.9%	

DEPTH (FEET)

6810 20 30 40 50 60 70 80 90 6900 10 20 30 40

6089u 1636u 1674u 4710u

2748u

CUTTINGS LITHOLOGY

GAMMA RAY 50 API 200

TVD 6700

ft

TFG 7700

Survey MD 6790' INC 0.61° AZM 162.18° TVD 6706.94'

SEC FXD5M Serial 11942355

Bit #02 8-3/4

Drilling commences 0200 hrs 10/15/2012 from 6833' MD

Survey MD 6861' INC 2.17° AZM 174.19° TVD 6777.91'

Survey MD 6918' INC 8.87° AZM 178.31° TVD 6834.62'

WT 9.5 IN/9.5 VIS 36 IN/36

SLT YSH: gy-m gy, sb pty-sb blk, firm to m sft, sbnd-sbang, mod fri, tr dism pyr, sl calc, n spl flor

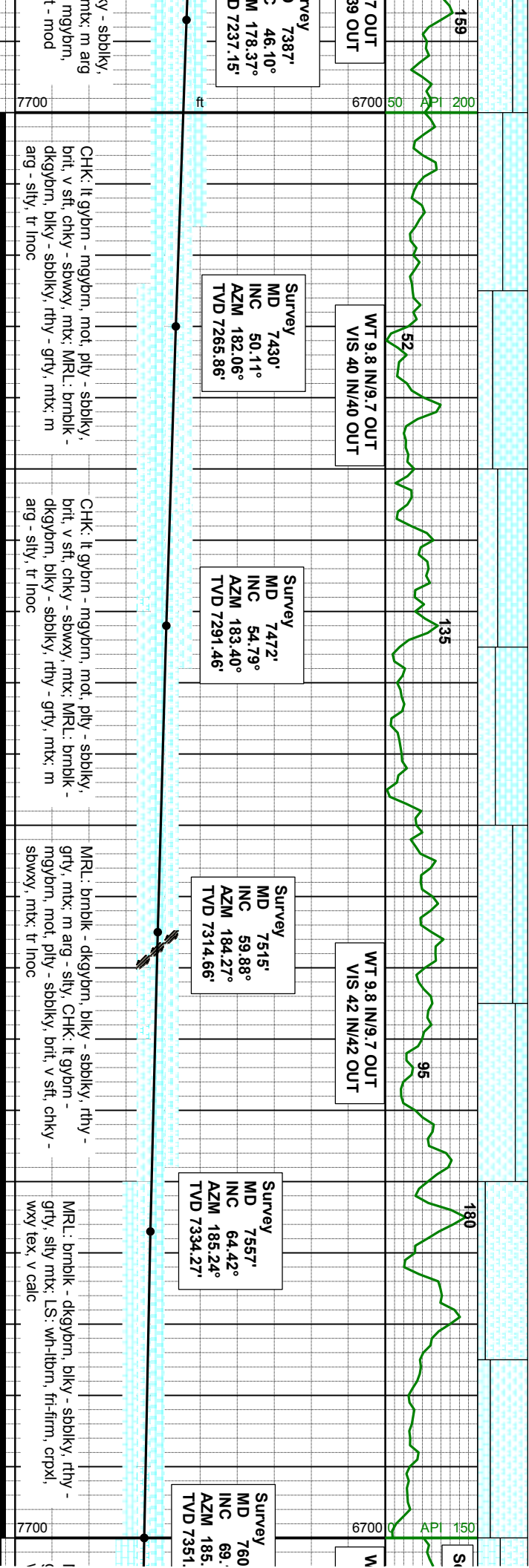
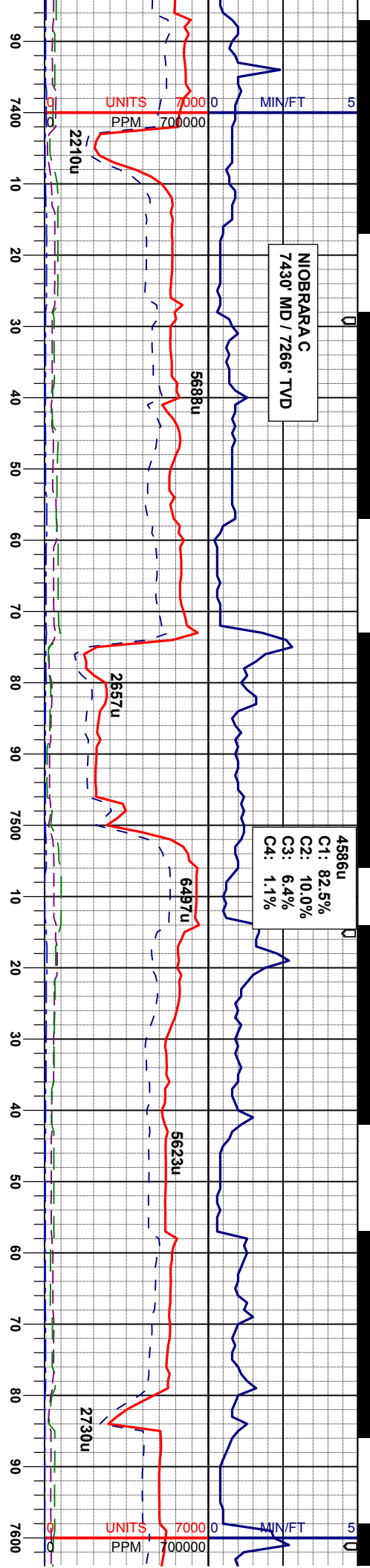
SLT YSH: gy-m gy-brn, sb pty-sb blk, firm to m sft, sbnd-sbang, mod fri, sl calc, n spl flor

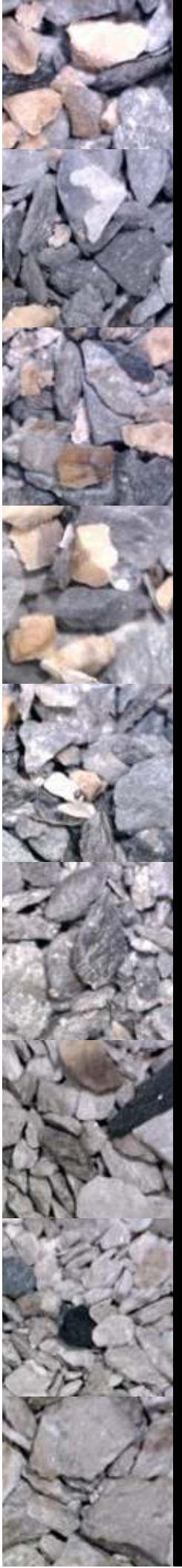
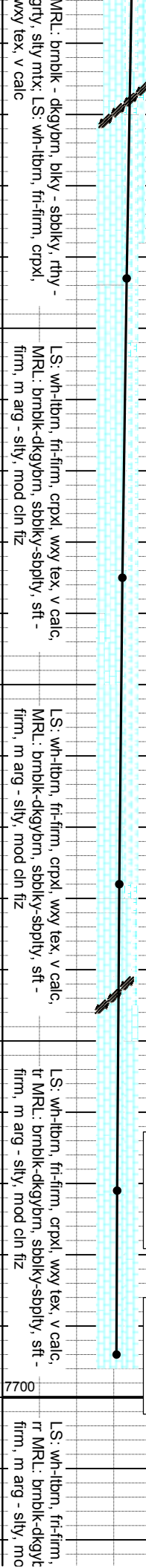
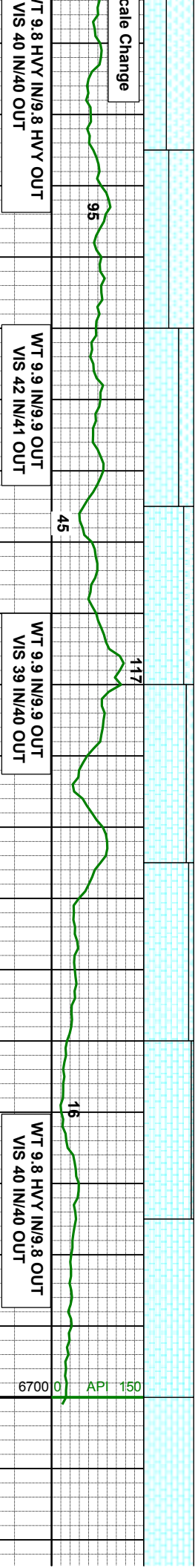
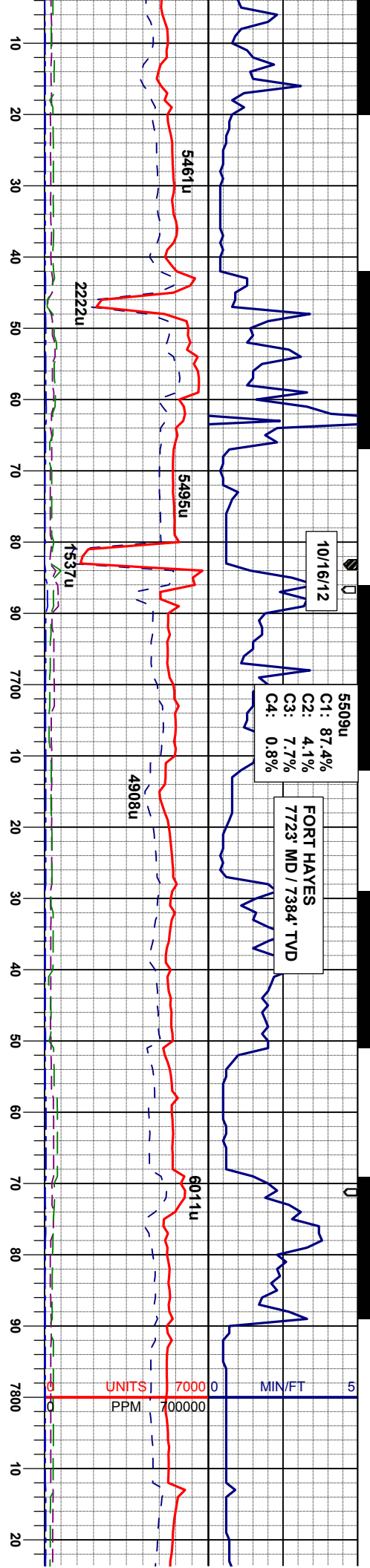
OIL SHOWS

SAMPLE PHOTOS

Acetone was used as the cutting agent with the dimple filled to the rim

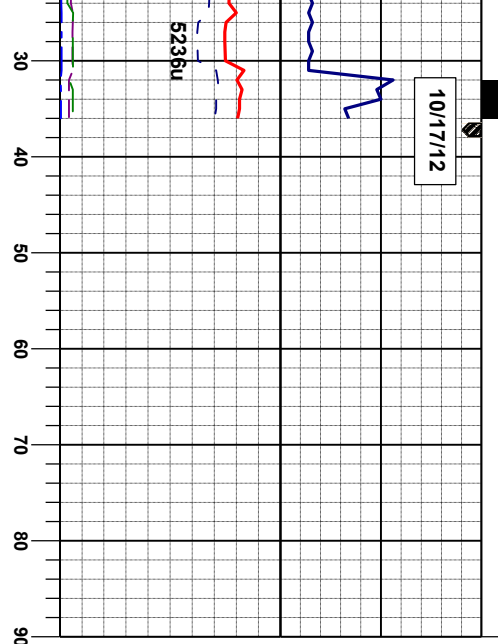
The ratings are based on 7 descriptors: None, Slight trace, Trace, Fair, Moderate, Good, and Excellent. The descriptor used is based on the loggers observations and best judgement of brilliance, color and longevity of the cut.







10/17/12



ANADARKO
RAYMOND 38C - 29HZ
CURVE TD'D @ 7837' MD
ON 10/16/12 @ 0622 HRS

THANK YOU FOR USING
COLUMBINE LOGGING INC.

crpxl, wxy tex, v calc,
rn, sbblky-sbply, sft -
d cin fiz

