



Natural Formation Evaluation
Gamma Ray

Realtime Log

Scale:	Company: Anadarko E&P		
1:240	Well: RAYMOND 38C-29HZ		
TRUE VERTICAL DEPTH	Field: WELD COUNTY (KERR MCGEE)		
Status:	County: Weld	State: Colorado	Other Services:
FINAL PRINT	Surface Location: Latitude: 40° 12' 8.672" N Longitude: 104° 47' 46.043" W		Directional
API Number: 05-123-35848	SEC: 29	TWP: 3N	RNG: 66E
Permanent Datum (P.D.):	Ground Level	Elevation: 4925.00 ft.	Elevations: 17.00 ft. N/A
Log Measured From:	Kelly Bushing	17.00 ft.	Above P.D.
Depth Reference:	Driller's Depth		GL: 4925.00 ft.

Interval Logged		Dates		Magnetic Field Reference	
Top:	7838 ft.	Date From: 11/Oct/2012	Dip Angle: 66.81°	Azi Reference North:	True
Bottom:	11944 ft.	Date To: 19/Dec/2012	Total	Mag to Reference	
		Spud Date: 11/Oct/2012	Field Strength: 52781.0 nT	North Correction:	8.71°

Borehole Record			Casing Record		
Hole Size	From	To	Size	Weight	From To
13.500 in.	Surface	906 ft.	9.600 in.	36.00 lb/ft	Surface 906 ft.
8.500 in.	902 ft.	7837 ft.	7.000 in.	26.00 lb/ft	Surface 7828 ft.
6.125 in.	7837 ft.	11944 ft.			

Mud Record			Deviation Record		
Type	From	To	Hole Size	Interval	Inc / Az (Start) Inc / Az (End)
Water Based	Surface	906 ft.	13.500 in.	Surface	0.0° / 0.0°
Water Based	906 ft.	6832 ft.	8.500 in.	Vertical	0.5° / 207.5°
Water Based	6832 ft.	7838 ft.	8.500 in.	Curve	0.8° / 135.6°
Water Based	7838 ft.	11944 ft.	6.125 in.	Lateral	86.9° / 180.7°
					90.7° / 180.3°
					/
					/

Acquisition System		Software Version		Other	
Advantage	2.20U3	Rig:	Xtreme 8	/ Advance Drilling	
PLATS	6.4.1.34	Job No:	4985930		
		District / Unit:	Rocky Mountains	/	

INTEQ does not guarantee the accuracy or correctness of interpretations provided in or from this log. Since all interpretations are opinions based on measurements, INTEQ shall under no circumstances be responsible for consequential damages or any other loss, costs, damages or expenses incurred or sustained in connection with the use of any such interpretations. INTEQ disclaims all expressed and implied warranties related to this service. INTEQ's liabilities and obligations shall be governed by INTEQ's Standard Terms and Conditions.

Log Run Summary

LWD Run No.	BHA Run No.	Bit Run No.	Bit Size (in.)	Bit Type	Bit Gauge Length (in.)	Assembly Type	Logged Interval		Bit Depth Interval		Date / Time		Circ. Time (hrs.)
							Top (ft.)	Bottom (ft.)	From (ft.)	To (ft.)	Start	End	
2	2	3	8.750	PDC		Rotary Steerable	6794	7800	6832	7838	14/Oct/2012 18:04	14/Oct/2012 18:04	24.6

Crew

Name	Arrive	Depart	Name	Arrive	Depart	Name	Arrive	Depart
	Wellsite	Wellsite		Wellsite	Wellsite		Wellsite	Wellsite
Merek Roman	14/Dec/2012	18/Dec/2012	Nick Roosen	14/Dec/2012	19/Dec/2012	Kevin Sheridan	18/Dec/2012	19/Dec/2012

Mud Properties Record

Date / Time	LWD	Measured	Mud	Density	Viscosity	pH	Fluid	Oil /	Source	Total	K+
-------------	-----	----------	-----	---------	-----------	----	-------	-------	--------	-------	----

		Run No.	Depth (ft.)	Type	(ppg)	(cp)		Loss (cc)	Water		Chlorides (ppm)	(%)
18/Dec/2012	09:30	3	7800	Water Based	9.4	36	8.0	N/A	0/92.5	Pit	800	N/A

Mud Resistivity Record				Surface				Downhole			
Date / Time		LWD Run No.	Measured Depth (ft.)	Surface Temp (deg F)	Rm (ohm.m)	Rmf (ohm.m)	Rmc (ohm.m)	BHCT (deg F)	Rm @ BHCT (ohm.m)	Rmf @ BHCT (ohm.m)	Rmc @ BHCT (ohm.m)
16/Dec/2012	20:54	3	0	65	1.48	N/A	N/A	58	N/A	N/A	N/A
17/Dec/2012	11:55	3	7917	75	8.64	N/A	N/A	201	3.29	N/A	N/A
18/Dec/2012	17:01	3	10433	70	1.25	N/A	N/A	226	0.40	N/A	N/A
19/Dec/2012	07:35	3	11446	68	1.36	N/A	N/A	237	0.40	N/A	N/A

Mnemonics		
Curve	Description	Units
GRAX	Gamma Ray Apparent, 0.5 ft. Avg	API
ROP_AVG	Rate of Penetration, 3.0 ft. Avg	ft/hr
TCDX	Downhole Temperature	degF
WOB_AVG	Surface Weight On Bit 1.0 ft Avg WOB_AVG	KLBF

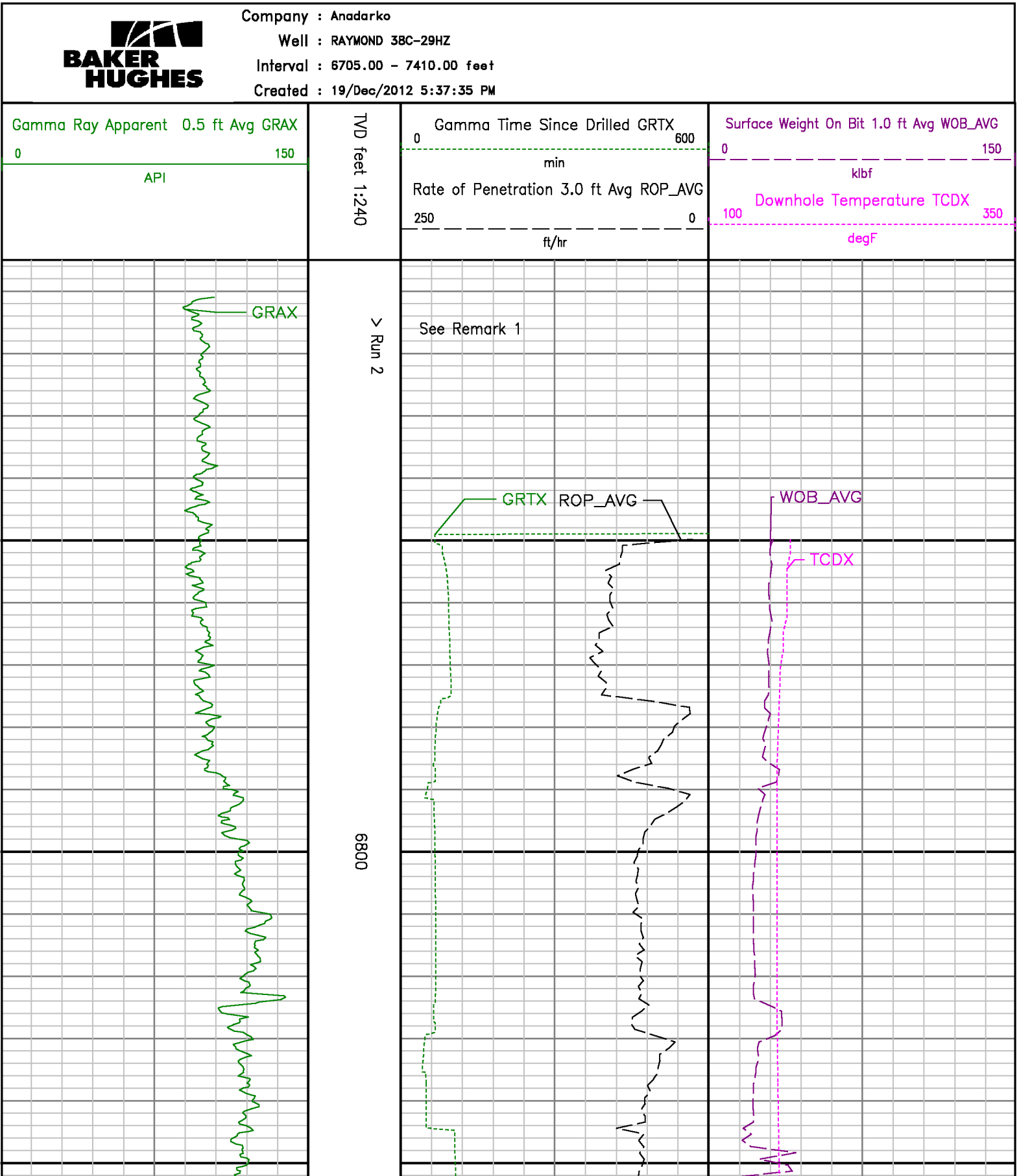
Equipment and Service Data						
LWD Run No.	Tool	Serial Number	Measurement	Bit Offset (ft)	Max O.D. (in.)	Min I.D. (in.)
2	DIR	12479870	Directional	40.80	6.750	2.250
2	SRIG	10594918	Gamma	37.42	6.750	2.250

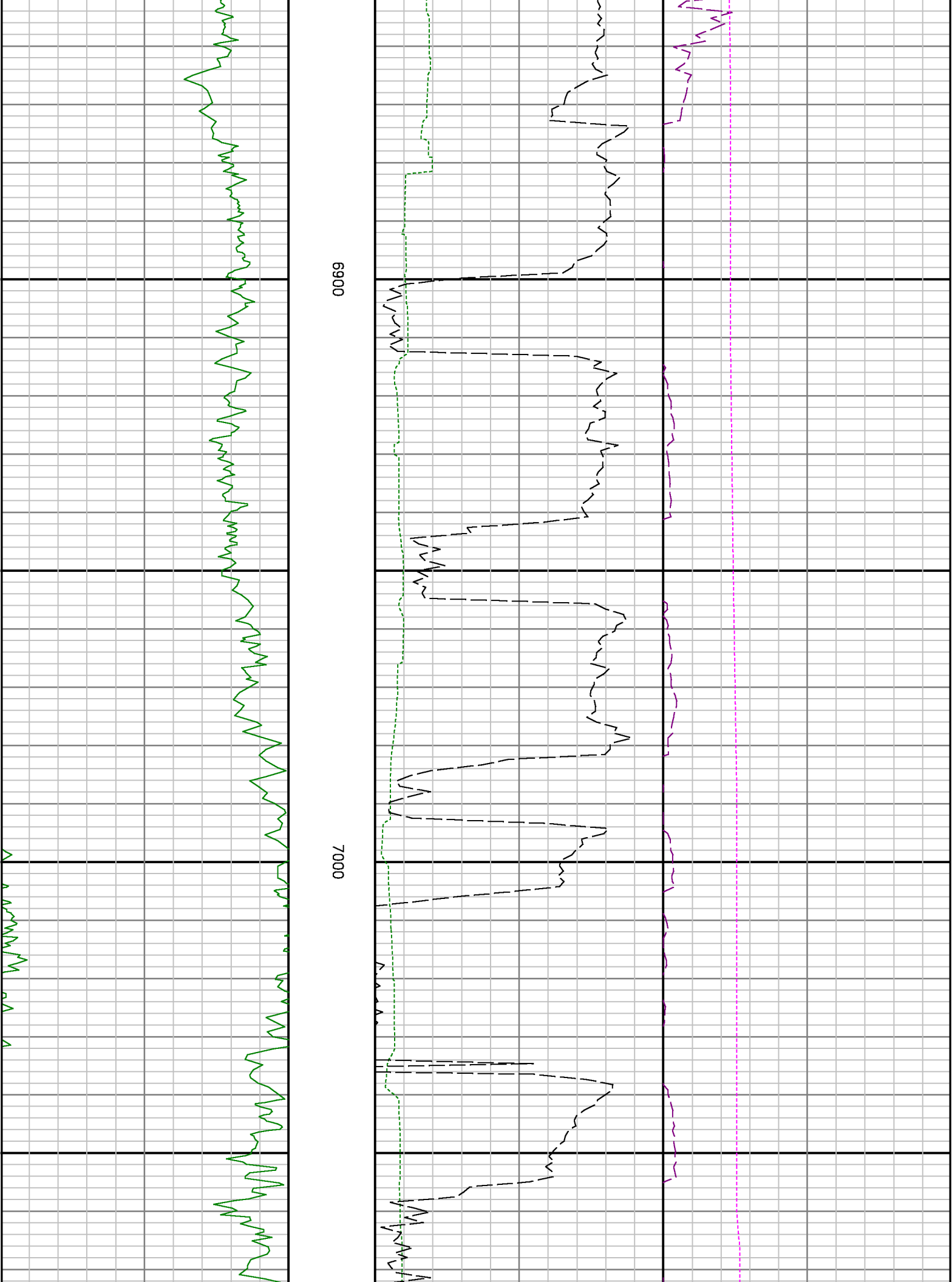
Service and Tool Mnemonics		
Mnemonic	Name	Description
DIR	Directional	Wellbore directional survey
SRIG	Inclination and Gamma	Probe based gamma ray and inclination module

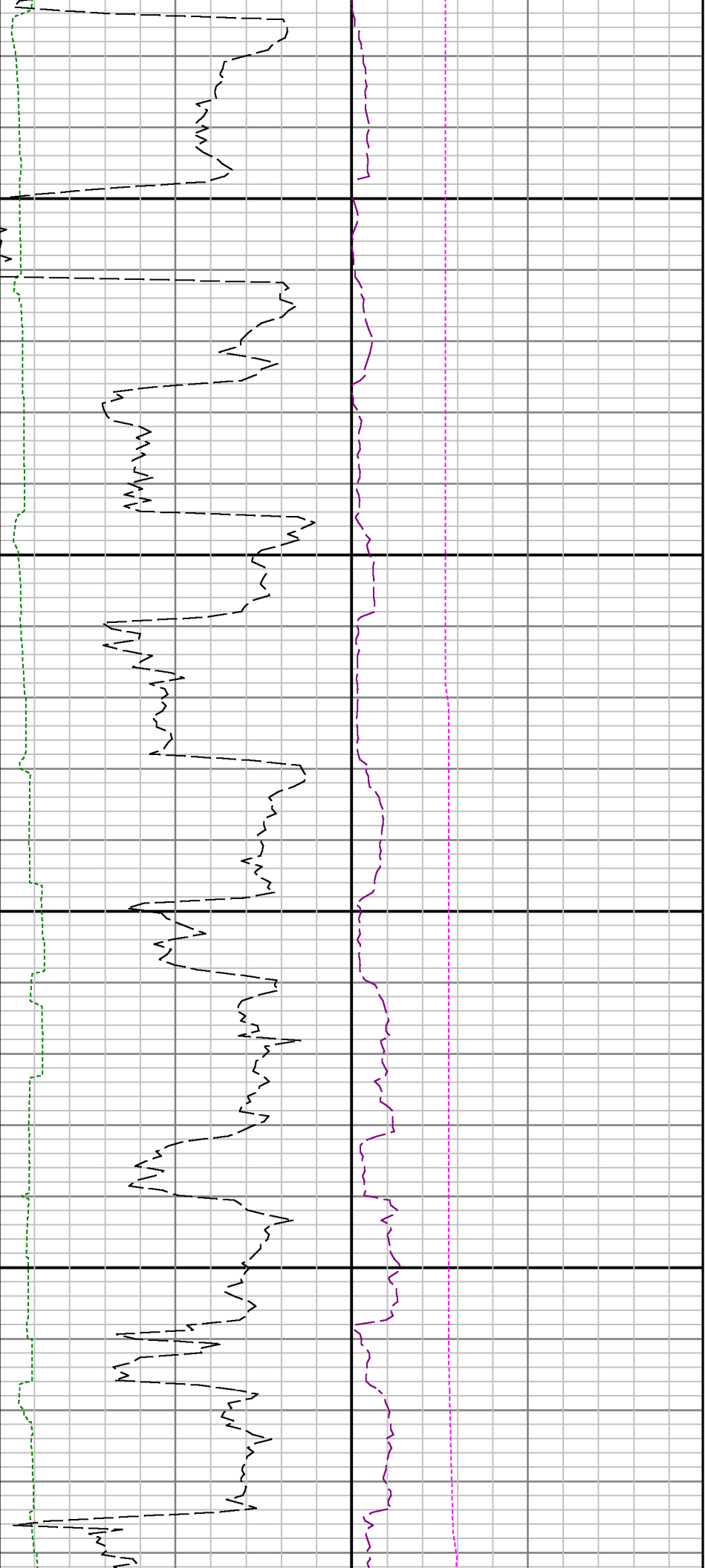
Comments	
<p>(1) Baker Hughes INTEQ run 2 utilized 6 1/2 inch NaviGamma services (Gamma Ray and Directional) behind an 8 3/4 inch bit and steerable assembly from 6832 to 7838 feet MD (6748 to 7394 feet TVD)</p> <p>(2) Baker Hughes INTEQ run 3 utilized 4 3/4 inch OnTrak services (Multiple Propagation Resistivity, Gamma Ray, Directional) behind a 6 1/8 inch bit and steerable assembly from 7838 to 11944 feet MD (7394 to 7400 feet TVD)</p> <p>(3) A sliding indicator is shown to the right edge of track 2 as a heavy line. The indicator has been depth-shifted to resistivity sensor offset to correspond with resistivity data acquired while sliding.</p>	

Remarks				
Number	Measured Depth (ft)	Hole Section (in.)	LWD Run No.	Remark
1	7734	6.750	3	Tool Joint at 7734 feet MD (7294 feet TVD) (SRIG 6.750 ft)

1	6794	8.750	2	The interval from surface to 6794 feet MD (6710 feet TVD) was not logged since logging began at the curve section of the well.
2	6794	8.750	2	The interval from 6794 to 6832 feet MD (6710 to 6748 feet TVD) was logged up to 20 hours after being drilled due to a trip out of the hole for curve assembly.

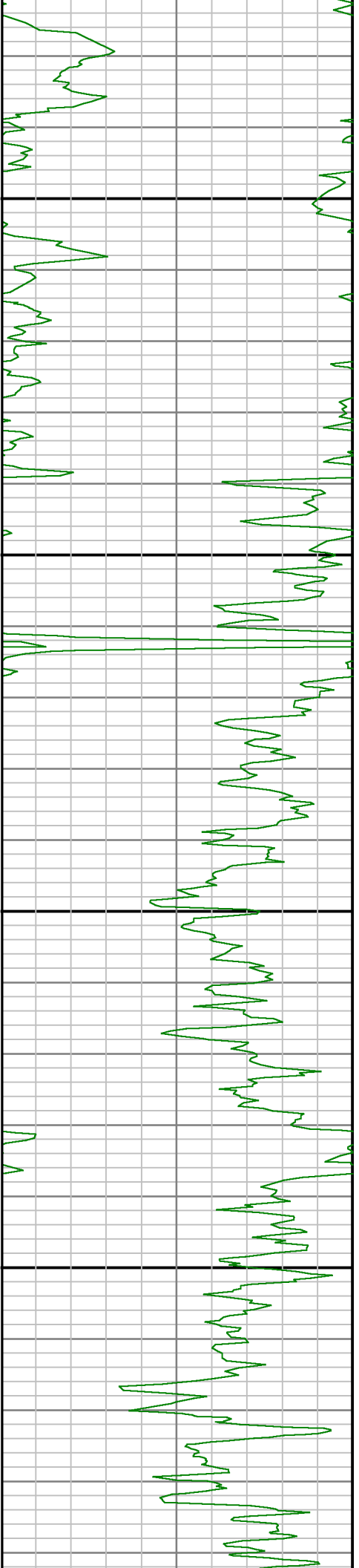


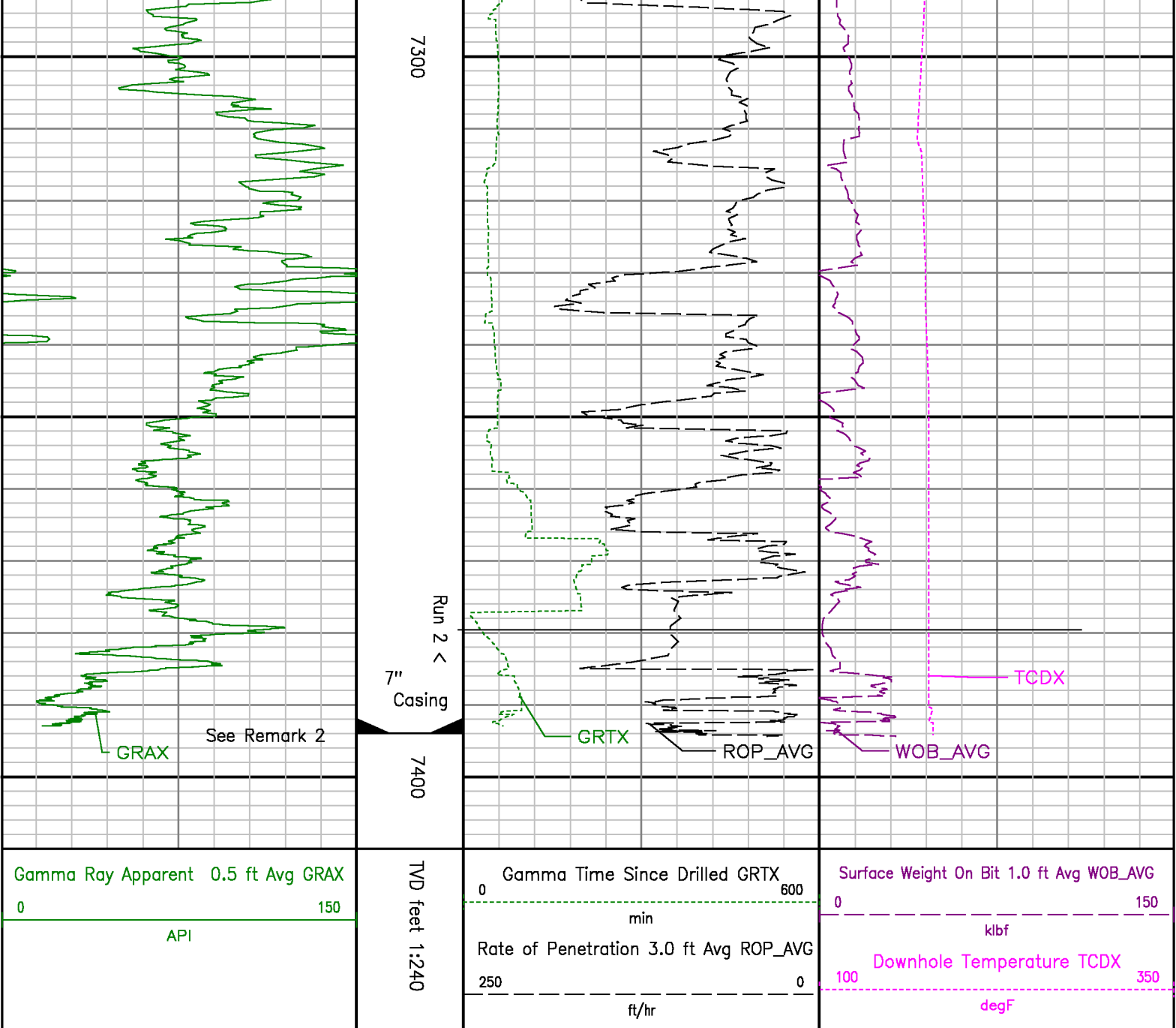




7100

7200





ADVANTAGE Field Survey Listing

Operator : Anadarko	Field : WELD COUNTY (KERR MCGEE)	API No : xx-xxx-xxxxx
Well : RAYMOND 38C-29HZ	Rig : Xtreme 8	Job : 4985930
Wellbore : RAYMOND 38C-29HZ Orig Hole		

Well Origin

Latitude	40.2024 deg	Longitude	-104.7981 deg
North Reference	True	Drill Depth Zero	Kelly Bushing
Vertical Datum is	Ground Level	Vertical Datum to DDZ	17.00 ft
Vertical Section North	0.00 ft	Vertical Section East	0.00 ft
Vertical Section Azimuth	169.3900 deg	Vertical Section Depth	0.00ft
Grid Convergence	0.0000 deg	Magnetic Declination	8.7100 deg
Total Correction	8.7100 deg	TVD Calculation Method	Minimal Curvature
D-Raw Calculation	Magcorr1	Local Magnetic Field	52781 nT
Local Magnetic Dip Angle	66.8100 deg	Local Gravity Field	9.804 m/s^2

Tie	MD	Incl	Azim	North	East	TVD	VS	Incr VS	Crs Len	DLS	Build	Turn
-----	----	------	------	-------	------	-----	----	---------	---------	-----	-------	------

	ft	deg	deg	ft	ft	ft	ft	ft	ft	deg/100ft	deg/100ft	deg/100ft
	0.00	0.0000	0.0000	0.00	0.00	0.00	0.00	0.00				
	17.00	0.0000	150.9500	0.00	0.00	17.00	0.00	0.00	17.00	0.00	0.00	887.94
	117.00	0.2500	150.9500	-0.19	0.11	117.00	0.21	0.22	100.00	0.25	0.25	0.00
	217.00	0.2800	221.9200	-0.56	0.05	217.00	0.56	0.60	100.00	0.31	0.03	70.97
	317.00	0.4400	196.3600	-1.11	-0.22	317.00	1.05	1.21	100.00	0.22	0.16	-25.56
	417.00	0.2300	218.9800	-1.64	-0.46	417.00	1.53	1.78	100.00	0.24	-0.21	22.62
	517.00	0.4500	219.3400	-2.10	-0.83	516.99	1.91	2.38	100.00	0.22	0.22	0.36
	617.00	0.6100	197.6200	-2.91	-1.24	616.99	2.63	3.29	100.00	0.25	0.16	-21.72
	717.00	0.4800	225.3100	-3.71	-1.70	716.98	3.33	4.21	100.00	0.29	-0.13	27.69
	817.00	0.6900	229.3800	-4.40	-2.46	816.98	3.87	5.23	100.00	0.21	0.21	4.07
	902.00	0.4900	207.4800	-5.05	-3.01	901.98	4.41	6.09	85.00	0.35	-0.24	-25.76
	960.00	0.3700	223.2900	-5.41	-3.26	959.97	4.72	6.52	58.00	0.29	-0.21	27.26
	1052.00	0.3400	192.7800	-5.89	-3.52	1051.97	5.14	7.07	92.00	0.21	-0.03	-33.16
	1142.00	1.6500	71.8700	-5.75	-2.35	1141.96	5.22	8.25	90.00	2.05	1.46	-134.34
	1233.00	3.5800	78.0900	-4.75	1.68	1232.86	4.98	12.40	91.00	2.14	2.12	6.64
	1323.00	4.9100	75.4000	-3.20	8.16	1322.61	4.65	19.06	90.00	1.49	1.48	-2.99
	1416.00	5.9200	75.0400	-0.96	16.64	1415.20	4.01	27.83	93.00	1.09	1.09	-0.39
	1501.00	7.6100	74.7800	1.65	26.31	1499.60	3.23	37.85	85.00	1.99	1.99	-0.31
	1586.00	8.5000	70.1100	5.26	37.65	1583.76	1.76	49.75	85.00	1.30	1.05	-5.49
	1672.00	8.4900	71.3500	9.45	49.64	1668.82	-0.15	62.45	86.00	0.21	-0.01	1.44
	1757.00	9.2400	71.6400	13.61	62.06	1752.80	-1.95	75.55	85.00	0.88	0.88	0.34
	1842.00	10.3700	76.3100	17.57	75.97	1836.56	-3.28	90.01	85.00	1.62	1.33	5.49
	1928.00	10.3400	75.8900	21.28	90.97	1921.16	-4.17	105.47	86.00	0.09	-0.03	-0.49
	2013.00	11.0800	76.1700	25.10	106.30	2004.68	-5.09	121.27	85.00	0.87	0.87	0.33
	2098.00	11.6100	74.5200	29.37	122.62	2087.99	-6.29	136.13	85.00	0.94	0.86	-1.94
	2184.00	11.8000	77.2400	33.66	139.68	2172.17	-7.37	155.72	86.00	0.65	-0.01	3.16
	2269.00	12.0600	78.2600	37.39	156.85	2255.34	-7.87	173.29	85.00	0.39	0.31	1.20
	2354.00	12.3300	78.0200	41.08	174.42	2338.42	-8.26	191.25	85.00	0.32	0.32	-0.26
	2440.00	12.3100	75.6700	45.25	192.28	2422.44	-9.08	209.59	86.00	0.58	-0.02	-2.73
	2525.00	11.6200	73.9100	49.87	209.29	2505.59	-10.48	227.21	85.00	0.92	-0.61	-2.07
	2610.00	11.3300	77.9300	53.99	225.68	2588.89	-11.51	244.11	85.00	1.00	-0.34	4.73
	2696.00	11.3800	77.3400	57.61	242.22	2673.21	-12.03	261.04	86.00	0.15	0.06	-0.69
	2781.00	11.2300	76.6200	61.37	258.45	2756.56	-12.73	277.71	85.00	0.24	-0.18	-0.65
	2866.00	11.3400	75.9300	65.31	274.61	2839.92	-13.63	294.34	85.00	0.20	0.13	-0.61
	2951.00	11.7500	77.6000	69.20	291.17	2923.20	-14.41	311.35	85.00	0.62	0.46	1.96
	3037.00	11.4300	77.2700	72.96	308.03	3007.44	-15.00	326.63	86.00	0.38	-0.37	-0.36
	3122.00	10.0800	77.3900	76.44	323.51	3090.95	-15.57	344.49	85.00	1.59	-1.59	0.14
	3207.00	10.3600	77.7800	79.66	336.24	3174.60	-16.04	359.57	85.00	0.34	0.33	0.46
	3293.00	10.5800	76.9600	83.10	353.49	3259.17	-16.60	375.20	86.00	0.31	0.26	-0.95
	3378.00	9.9000	71.5900	87.17	368.02	3342.82	-17.92	390.29	85.00	1.36	-0.60	-6.32
	3463.00	9.3500	71.7600	91.64	381.51	3426.62	-19.83	404.50	85.00	0.65	-0.65	0.20
	3549.00	9.7400	72.2500	96.04	395.08	3511.43	-21.66	418.76	86.00	0.46	0.45	0.57
	3634.00	9.3400	76.6800	99.82	408.64	3595.25	-22.88	432.84	85.00	0.98	-0.47	5.21
	3719.00	9.3200	81.8900	102.36	422.16	3679.13	-22.90	446.61	85.00	0.99	-0.02	6.13
	3805.00	8.6600	86.9100	103.72	435.52	3764.07	-21.75	460.03	86.00	1.19	-0.77	5.64
	3890.00	9.6500	85.5600	104.61	449.01	3847.99	-20.15	473.56	85.00	1.19	1.16	-1.59
	3975.00	11.5100	82.9400	106.21	464.53	3931.54	-18.86	489.16	85.00	2.26	2.19	-3.08
	4060.00	11.9900	81.2000	106.60	481.66	4014.76	-18.05	506.47	85.00	0.70	0.56	-2.05
	4145.00	12.5300	79.1000	111.69	499.46	4097.82	-17.82	524.51	85.00	0.82	0.64	-2.47
	4231.00	12.6600	78.7800	115.29	517.66	4181.75	-17.97	543.27	86.00	0.17	0.15	-0.37
Tie	MD ft	Incl deg	Azim deg	North ft	East ft	TVD ft	VS ft	Incr VS ft	Crs Len ft	DLS deg/100ft	Build deg/100ft	Turn deg/100ft
	4316.00	12.8600	78.1300	119.05	536.25	4264.65	-18.28	562.04	85.00	0.29	0.24	-0.76
	4401.00	12.6000	74.7800	123.43	554.46	4347.57	-19.23	580.76	85.00	0.92	-0.31	-3.94
	4486.00	12.9800	74.0000	128.49	572.58	4430.46	-20.87	599.58	85.00	0.49	0.45	-0.92
	4572.00	12.1700	73.4400	133.74	590.55	4514.39	-22.72	618.30	86.00	0.95	-0.94	-0.65
	4657.00	12.1800	73.6200	138.82	607.74	4597.48	-24.55	636.23	85.00	0.05	0.01	0.21
	4742.00	12.1400	74.5700	143.73	624.96	4680.57	-26.20	654.13	85.00	0.24	-0.05	1.12
	4827.00	11.9700	73.6200	148.59	642.03	4763.70	-27.84	671.88	85.00	0.31	-0.20	-1.12
	4912.00	11.9000	73.8400	153.52	658.91	4846.86	-29.57	689.46	85.00	0.10	-0.08	0.26
	4998.00	11.7600	72.9700	158.55	675.80	4931.04	-31.41	707.09	86.00	0.26	-0.16	-1.01

	5083.00	11.6100	72.1300	163.71	692.23	5014.27	-33.46	724.31	85.00	0.27	-0.18	-0.99
	5168.00	10.7200	71.8700	168.80	707.88	5097.66	-35.58	740.77	85.00	1.05	-1.05	-0.31
	5253.00	10.3300	76.9200	172.98	722.82	5181.24	-36.94	756.28	85.00	1.18	-0.46	5.94
	5339.00	10.3700	78.5200	178.27	737.91	5265.84	-37.39	771.73	86.00	0.34	0.05	1.86
	5424.00	10.7000	76.3400	179.65	753.08	5349.40	-37.92	787.26	85.00	0.61	0.39	-2.56
	5509.00	10.7600	73.7200	183.74	768.36	5432.92	-39.13	803.09	85.00	0.58	0.07	-3.08
	5595.00	9.2300	72.3500	188.08	782.64	5517.61	-40.77	818.01	86.00	1.80	-1.78	-1.59
	5680.00	9.4900	72.3700	192.27	795.82	5601.48	-42.46	831.84	85.00	0.31	0.31	0.02
	5765.00	9.6100	73.6500	196.39	809.30	5685.30	-44.02	845.94	85.00	0.29	0.14	1.51
	5851.00	8.3900	70.5500	200.50	822.11	5770.24	-45.71	859.38	86.00	1.53	-1.42	-3.60
	5936.00	6.9500	70.2600	204.31	832.79	5854.48	-47.48	870.73	85.00	1.69	-1.69	-0.34
	6021.00	5.7300	67.0800	207.69	841.54	5938.96	-49.20	880.11	85.00	1.49	-1.44	-3.74
	6106.00	4.7100	67.5000	210.68	848.68	6023.60	-50.82	887.85	85.00	1.20	-1.20	0.49
	6191.00	3.9800	65.6900	213.23	854.59	6108.36	-52.24	894.28	85.00	0.87	-0.86	-2.13
	6277.00	3.1500	63.3500	215.52	859.42	6194.19	-53.60	899.63	86.00	0.98	-0.97	-2.72
	6362.00	2.7400	63.4200	217.48	863.32	6279.08	-54.80	904.00	85.00	0.48	-0.48	0.08
	6448.00	1.9200	63.7100	219.04	866.45	6365.01	-55.76	907.49	86.00	0.95	-0.95	0.34
	6533.00	1.4900	66.1200	220.11	868.74	6449.97	-56.40	910.02	85.00	0.51	-0.51	2.84
	6619.00	0.8900	110.7500	220.33	870.39	6535.95	-56.30	911.88	86.00	1.23	-0.70	51.90
	6704.00	0.8000	135.8000	219.67	871.42	6620.94	-55.47	912.91	85.00	0.44	-0.11	29.24
	6790.00	0.6100	162.1800	218.81	871.98	6706.94	-54.51	913.94	86.00	0.43	-0.22	30.91
	6861.00	2.1700	174.1900	217.11	872.23	6777.91	-52.80	915.85	71.00	2.22	2.20	16.92
	6918.00	8.8700	178.3100	211.64	872.47	6834.62	-47.38	921.13	57.00	11.77	11.75	7.23
	6960.00	13.9100	181.4100	203.35	872.44	6875.78	-39.24	929.42	42.00	12.08	12.00	7.38
	7003.00	17.7500	185.4300	191.65	871.70	6917.14	-27.88	941.14	43.00	9.28	8.93	9.35
	7046.00	21.6400	183.2800	177.21	870.62	6957.62	-13.87	955.63	43.00	9.20	9.05	-5.00
	7088.00	25.1700	182.5200	160.55	869.79	6996.16	2.35	972.31	42.00	8.44	8.40	-1.81
	7131.00	27.3000	180.0800	141.55	869.37	7034.73	20.94	991.31	43.00	5.55	4.95	-5.67
	7174.00	30.7600	178.6300	120.69	869.62	7072.32	41.49	1012.17	43.00	8.21	8.05	-3.37
	7216.00	34.6200	179.0600	98.01	870.07	7107.66	63.66	1034.85	42.00	9.21	9.19	1.02
	7259.00	37.8200	178.3300	72.61	870.66	7142.34	88.94	1060.26	43.00	7.51	7.44	-1.70
	7302.00	40.2700	177.0500	45.55	871.76	7175.74	115.74	1087.34	43.00	6.00	5.70	-2.98
	7344.00	44.2100	176.2100	17.37	873.42	7206.83	143.74	1115.57	42.00	9.48	9.38	-2.00
	7387.00	46.1000	178.3700	-13.08	874.86	7237.15	173.93	1146.05	43.00	5.66	4.40	5.02
	7430.00	50.1100	182.0600	-45.07	874.70	7265.86	205.35	1178.04	43.00	11.30	9.33	8.58
	7472.00	54.7900	183.4000	-78.32	873.11	7291.46	237.74	1211.33	42.00	11.43	11.14	3.19
	7515.00	59.8800	184.2700	-114.42	870.68	7314.66	272.78	1247.52	43.00	11.96	11.84	2.02
	7557.00	64.4200	185.2400	-151.42	867.59	7334.27	308.57	1284.64	42.00	11.00	10.81	2.31
	7600.00	69.1000	185.3900	-190.75	863.93	7351.23	346.56	1324.14	43.00	10.89	10.88	0.35
	7643.00	72.5400	185.5300	-231.17	860.07	7365.36	385.58	1364.75	43.00	8.01	8.00	0.33
	7685.00	76.3200	183.7800	-271.49	856.79	7376.63	424.60	1405.20	42.00	9.85	9.00	-4.17
Tie	MD ft	Incl deg	Azim deg	North ft	East ft	TVD ft	VS ft	Incr VS ft	Crs Len ft	DLS deg/100ft	Build deg/100ft	Turn deg/100ft
	7728.00	80.4400	183.6300	-313.51	854.07	7385.29	465.40	1447.31	43.00	9.59	9.58	-0.35
	7771.00	84.6400	181.8600	-356.08	852.03	7390.87	506.88	1489.93	43.00	10.59	9.77	-4.12
	7794.00	86.8900	180.7100	-379.01	851.52	7392.57	529.32	1512.87	23.00	10.98	9.78	-5.00
	7858.00	89.2400	181.2100	-442.96	850.45	7394.73	591.98	1576.83	64.00	3.75	3.67	0.78
	7900.00	90.5500	180.3900	-484.96	849.86	7394.81	633.15	1618.83	42.00	3.68	3.12	-1.95
	7986.00	91.1700	180.7600	-570.94	849.00	7393.52	717.50	1704.82	86.00	0.84	0.72	0.43
	8071.00	91.0500	180.1100	-655.93	848.35	7391.87	800.91	1789.80	85.00	0.78	-0.14	-0.76
	8156.00	91.0800	180.8700	-740.91	847.63	7390.29	884.31	1874.78	85.00	0.89	0.04	0.89
	8242.00	90.1200	180.5700	-826.89	846.55	7389.39	968.63	1960.78	86.00	1.17	-1.12	-0.35
	8327.00	89.3800	179.3300	-911.89	846.62	7389.76	1052.18	2045.78	85.00	1.70	-0.87	-1.46
	8412.00	88.4900	179.5200	-996.87	847.47	7391.34	1135.87	2130.76	85.00	1.07	-1.05	0.22
	8498.00	89.5700	180.3200	-1082.86	847.59	7392.80	1220.40	2216.75	86.00	1.56	1.26	0.93
	8583.00	89.2900	180.1500	-1167.85	847.24	7393.64	1303.88	2301.74	85.00	0.39	-0.33	-0.20
	8668.00	91.3500	181.2600	-1252.84	846.20	7393.17	1387.22	2386.73	85.00	2.75	2.42	1.31
	8754.00	90.3700	181.0000	-1338.81	844.50	7391.88	1471.41	2472.72	86.00	1.18	-1.14	-0.30
	8839.00	90.6800	179.6800	-1423.80	844.00	7391.10	1554.86	2557.72	85.00	1.60	0.36	-1.55
	8924.00	90.7700	179.7200	-1508.80	844.44	7390.02	1638.48	2642.71	85.00	0.12	0.11	0.05
	9009.00	89.5100	179.2800	-1593.79	845.18	7389.82	1722.16	2727.71	85.00	1.57	-1.48	-0.52
	9095.00	89.2000	179.5600	-1679.78	846.05	7390.78	1806.64	2813.70	86.00	0.49	-0.36	0.33
	9180.00	88.9500	180.1200	-1764.77	846.29	7392.16	1890.42	2898.69	85.00	0.72	-0.29	0.66

	9285.00	89.5700	179.9500	-1849.78	848.24	7393.25	1973.95	2983.88	85.00	0.78	0.73	-0.20
	9351.00	91.4800	180.1800	-1935.75	848.14	7392.47	2058.45	3089.88	86.00	2.24	2.22	0.27
	9438.00	90.2800	180.3800	-2020.74	845.74	7391.18	2141.91	3154.86	85.00	1.43	-1.41	0.21
	9521.00	89.5400	180.3000	-2105.74	845.25	7391.29	2225.37	3239.86	85.00	0.87	-0.87	-0.07
	9606.00	90.8600	180.6200	-2190.73	844.57	7391.00	2308.78	3324.86	85.00	1.60	1.55	0.38
	9692.00	92.7700	182.1500	-2276.86	842.49	7388.27	2392.86	3410.61	86.00	2.85	2.22	1.78
	9777.00	92.8700	183.3600	-2361.46	838.41	7384.09	2475.45	3495.51	85.00	1.43	0.12	1.42
	9862.00	93.2400	183.9900	-2446.16	832.97	7379.56	2557.71	3580.39	85.00	0.86	0.44	0.74
	9948.00	92.9800	182.0900	-2531.91	828.42	7374.91	2641.15	3666.26	86.00	2.23	-0.33	-2.21
	10033.00	90.7600	182.8500	-2616.79	824.91	7372.15	2723.93	3751.21	85.00	2.67	-2.59	0.66
	10118.00	88.1100	184.2800	-2701.57	819.79	7374.47	2806.33	3836.15	85.00	5.79	-5.47	1.89
	10203.00	85.3900	179.3200	-2786.27	817.14	7380.78	2889.09	3920.89	85.00	5.86	-0.85	-5.81
	10289.00	87.9300	178.1800	-2872.04	820.51	7385.79	2974.01	4006.72	86.00	4.69	2.95	-3.65
	10374.00	90.5500	180.1000	-2956.97	823.27	7386.91	3057.99	4091.89	85.00	5.55	3.08	4.61
	10459.00	88.4000	179.2400	-3041.95	823.76	7387.69	3141.62	4176.88	85.00	2.72	-2.53	-1.01
	10545.00	88.5800	180.1500	-3127.92	824.22	7389.96	3226.20	4262.85	86.00	1.08	0.21	1.06
	10630.00	89.0300	180.0200	-3212.90	824.09	7391.73	3309.71	4347.63	85.00	0.55	0.53	-0.15
	10715.00	86.5100	178.7500	-3297.83	825.00	7395.04	3393.35	4432.56	85.00	3.32	-2.96	-1.49
	10801.00	89.1700	178.1200	-3383.72	827.35	7398.28	3478.21	4518.49	86.00	3.18	3.09	-0.73
	10886.00	89.2300	175.6500	-3468.58	831.97	7399.47	3562.47	4603.48	85.00	2.91	0.07	-2.91
	10971.00	89.7800	176.7300	-3553.39	837.61	7400.20	3646.86	4688.47	85.00	1.43	0.65	1.27
	11056.00	90.1800	177.3500	-3638.28	842.00	7400.23	3731.11	4773.47	85.00	0.87	0.47	0.73
	11142.00	89.1100	180.1600	-3724.25	843.87	7400.76	3815.95	4859.46	86.00	3.50	-1.24	3.27
	11227.00	89.1100	179.0500	-3809.23	844.46	7402.08	3899.59	4944.45	85.00	1.31	0.00	-1.31
	11312.00	89.5600	180.1000	-3894.22	845.09	7403.07	3983.24	5029.44	85.00	1.34	0.53	1.24
	11397.00	90.2100	180.8500	-3979.22	844.38	7403.24	4066.66	5114.44	85.00	1.17	0.78	0.88
	11483.00	89.5300	179.9800	-4065.21	843.76	7403.44	4151.07	5200.44	86.00	1.28	-0.79	-1.01
	11568.00	89.5000	180.1000	-4150.21	843.70	7404.16	4234.60	5285.43	85.00	0.15	-0.04	0.14
	11653.00	90.2400	180.7000	-4235.21	843.11	7404.35	4318.04	5370.43	85.00	1.12	0.87	0.71
	11739.00	90.8600	180.5200	-4321.20	842.19	7403.52	4402.39	5456.43	86.00	0.75	0.72	-0.21
Tie	MD ft	Incl deg	Azim deg	North ft	East ft	TVD ft	VS ft	Incr VS ft	Crs Len ft	DLS deg/100ft	Build deg/100ft	Turn deg/100ft
	11824.00	90.9200	180.3400	-4406.19	841.55	7402.20	4485.80	5541.42	85.00	0.22	0.07	-0.21
	11885.00	90.7100	180.2900	-4467.18	841.22	7401.34	4545.69	5602.41	61.00	0.35	-0.34	-0.08
	Projection to TD: 11944.00	90.7100	180.2900	-4526.17	840.92	7400.61	4603.62	5661.41	59.00	0.00	0.00	0.00