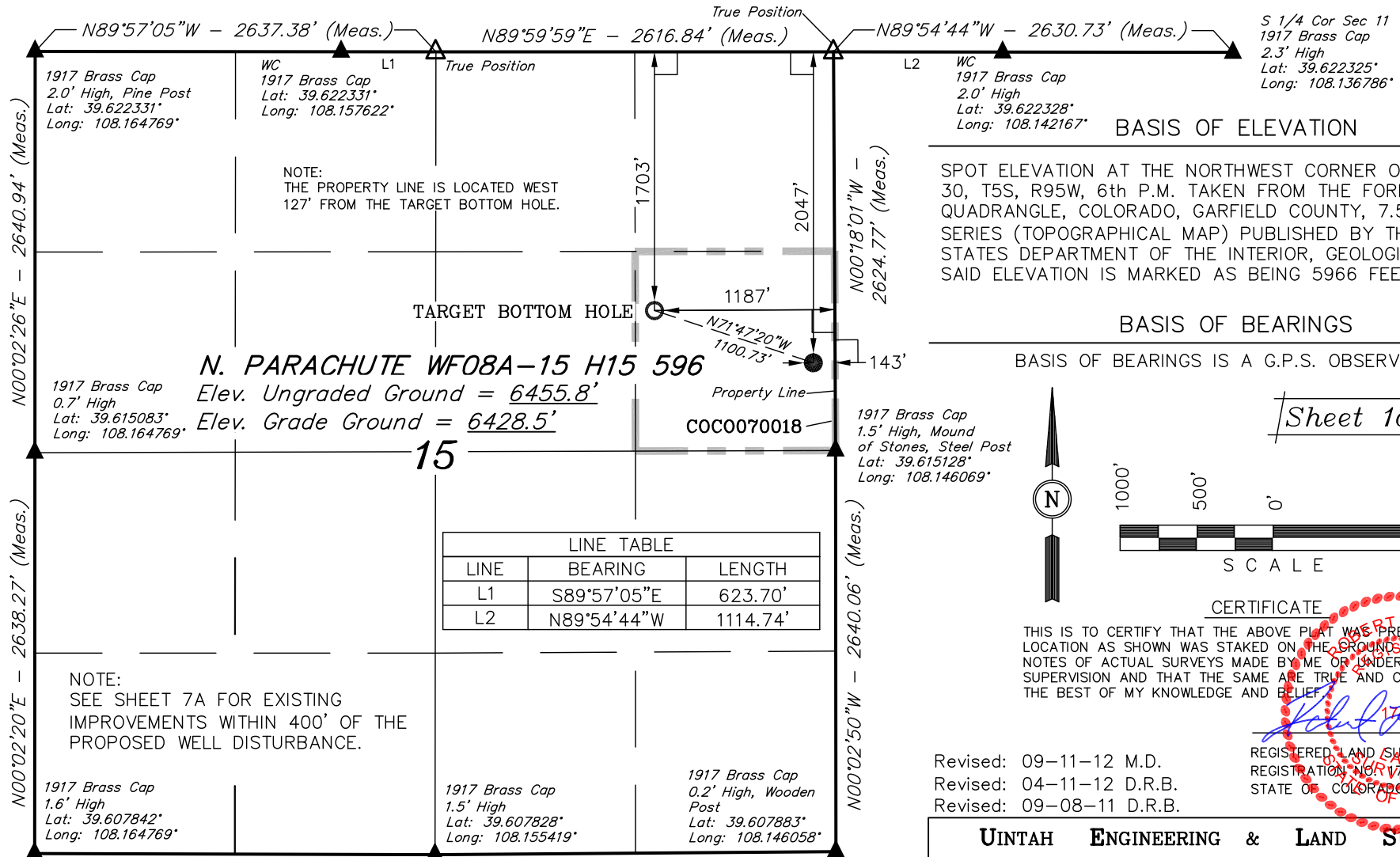


T5S, R96W, 6th P.M.

Well location, N. PARACHUTE WF08A-15 H15 596,
located as shown in the SE 1/4 NE 1/4 of Section
15, T5S, R96W, 6th P.M., Garfield County, Colorado.



LEGEND: N89°50'32"W - 2635.25' (Meas.) S89°34'40"W - 2638.64' (Meas.)

└─┘ = 90° SYMBOL

● = PROPOSED WELL HEAD.

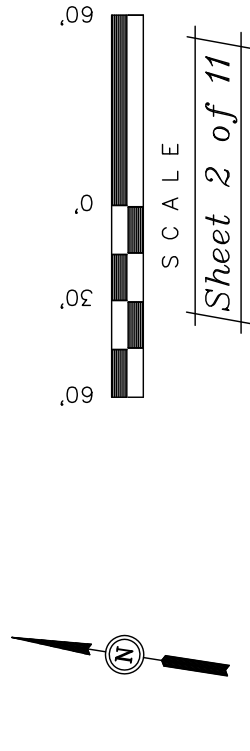
▲ = SECTION CORNERS LOCATED.

△ = SECTION CORNERS RE-EST.
(Not Set on Ground)

PDOP = 2.9

| NAD 83 (TARGET BOTTOM HOLE) | NAD 83 (SURFACE LOCATION) |
|--|--|
| LATITUDE = 39°37'03.57" (39.617658) | LATITUDE = 39°37'00.17" (39.616714) |
| LONGITUDE = 108°09'01.08" (108.150300) | LONGITUDE = 108°08'47.72" (108.146589) |
| NAD 27 (TARGET BOTTOM HOLE) | NAD 27 (SURFACE LOCATION) |
| LATITUDE = 39°37'03.66" (39.617683) | LATITUDE = 39°37'00.25" (39.616736) |
| LONGITUDE = 108°08'58.79" (108.149664) | LONGITUDE = 108°08'45.43" (108.145953) |

| | | |
|---------------------------|-------------------------------------|-------------------------|
| SCALE 1" = 1000' | DATE SURVEYED: 11-22-10 | DATE DRAWN: 06-15-11 |
| PARTY G.O. T.M. D.R.B. | REFERENCES G.L.O. PLAT | |
| WEATHER COOL | FILE Encana OIL & GAS (USA) INC. | |



SCALE: 1" = 60'
DATE: 11-23-10
DRAWN BY: D.R.B.
Revised: 07-13-11 D.R.B.
Revised: 08-03-11 D.R.B.
Revised: 04-11-12 D.R.B.
Revised: 09-11-12 M.D.

