

T5S, R96W, 6th P.M.

Section 15

N. PARACHUTE
WF02C-14 H15 596
 Elev. Ungraded Ground = 6447.7'
 Elev. Grade Ground = 6428.5'

COC0070018

LINE TABLE		
LINE	BEARING	LENGTH
L1	S89°57'05"E	623.70'
L2	N89°54'44"W	1114.74'

NOTE:
 THE PROPOSED BOTTOM HOLE FOR THIS WELL IS LOCATED IN THE NW 1/4 NE 1/4 OF SECTION 14, T5S, R96W, 6th P.M. AT A DISTANCE OF 631' FNL 1571' FEL. IT BEARS N70°31'11"E 4094.71' FROM THE PROPOSED WELL HEAD.





NOTE:
 SEE SHEET 7A FOR EXISTING IMPROVEMENTS WITHIN 400' OF THE PROPOSED WELL DISTURBANCE.

CERTIFICATE
 THIS IS TO CERTIFY THAT THE ABOVE PLAT WAS PREPARED IN ACCORDANCE WITH THE SURVEYING ACTS OF THE STATE OF UTAH AND THE LOCATION AS SHOWN WAS STAKED ON THE GROUND. I, THE SURVEYOR, HAVE REVIEWED THE NOTES OF ACTUAL SURVEYS MADE BY ME OR UNDER MY SUPERVISION AND THAT THE SAME ARE TRUE AND CORRECT TO THE BEST OF MY KNOWLEDGE AND BELIEF.

REGISTERED LAND SURVEYOR
 REGISTRATION NO. 17
 STATE OF UTAH

Revised: 04-11-12 D.R.B.
 Revised: 09-08-11 D.R.B.

UINTAH ENGINEERING & LAND SURVEYING
 85 SOUTH 200 EAST - VERNAL, UTAH 84401

 = 90° SYMBOL
 = PROPOSED WELL HEAD.
 = SECTION CORNERS LOCATED.
 = SECTION CORNERS RE-EST.
 (Not Set on Ground)

PDOP = 2.7

NAD 83 (SURFACE LOCATION)
LATITUDE = 39°37'00.62" (39.616839)
LONGITUDE = 108°08'48.01" (108.146669)
NAD 27 (SURFACE LOCATION)
LATITUDE = 39°37'00.71" (39.616864)
LONGITUDE = 108°08'45.72" (108.146033)

CERTIFICATE

THIS IS TO CERTIFY THAT THE ABOVE PLAT WAS PREPARED AND
LOCATION AS SHOWN WAS STAKED ON THE GROUND FROM FIELD
NOTES OF ACTUAL SURVEYS MADE BY ME OR UNDER MY
SUPERVISION AND THAT THE SAME ARE TRUE AND CORRECT TO
THE BEST OF MY KNOWLEDGE AND BELIEF.

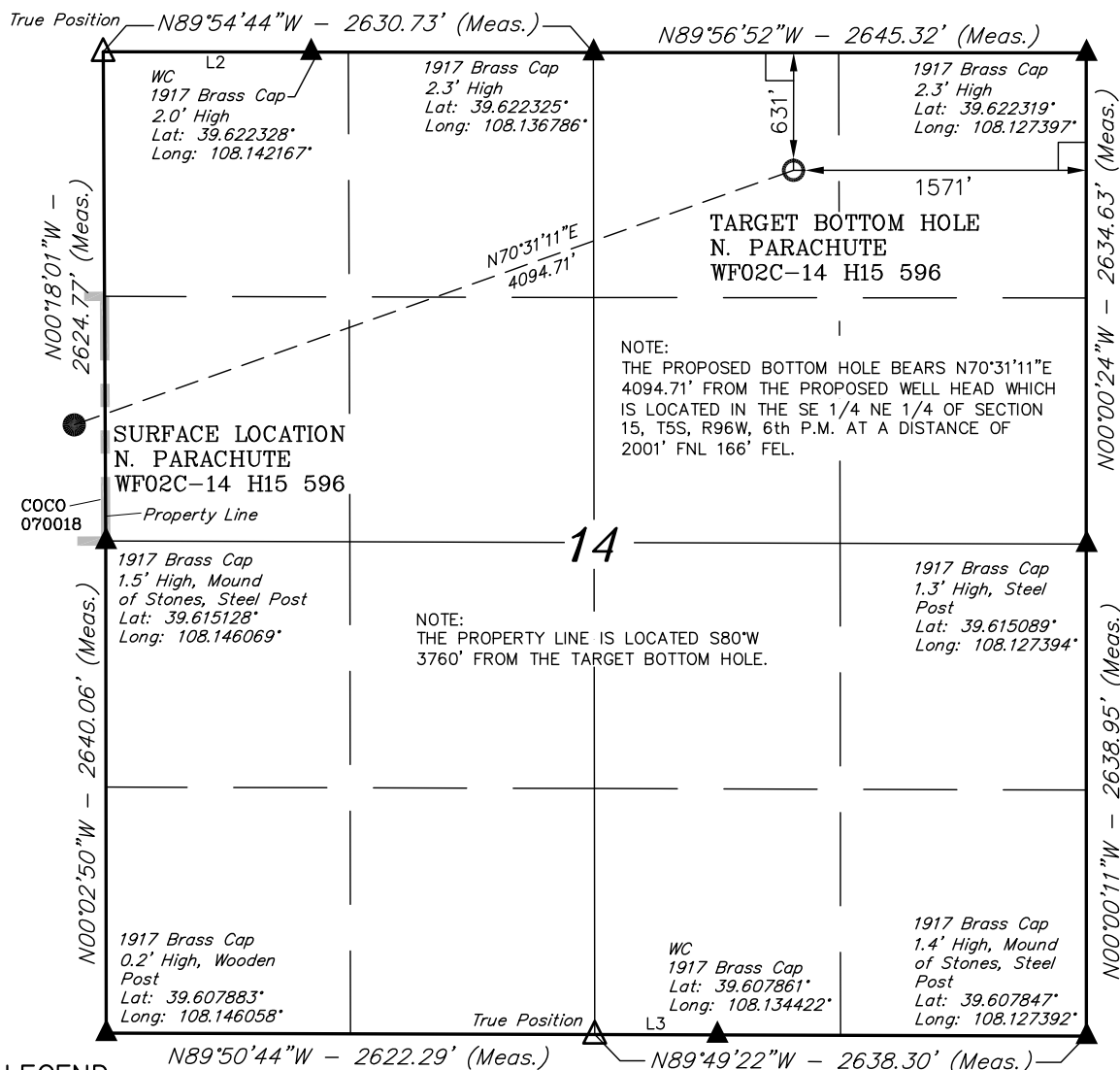
REGISTERED LAND SURVEYOR
REGISTRATION NO. 17492
STATE OF COLORADO
04-13-2012

Revised: 04-11-12 D.R.B.
Revised: 09-08-11 D.R.B.

UINTAH ENGINEERING & LAND SURVEYING
85 SOUTH 200 EAST - VERNAL, UTAH 84078
(435) 789-1017

SCALE 1" = 1000'	DATE SURVEYED: 11-22-10	DATE DRAWN: 06-15-11
PARTY G.O. T.M. D.R.B.	REFERENCES G.L.O. PLAT	
WEATHER COOL	FILE Encana OIL & GAS (USA) INC.	

T5S, R96W, 6th P.M.



LEGEND:

- └─┘ = 90° SYMBOL
- = PROPOSED WELL HEAD.
- ▲ = SECTION CORNERS LOCATED.
- △ = SECTION CORNERS RE-EST.
(Not Set on Ground)

NAD 83 (TARGET BOTTOM HOLE)	
LATITUDE	= 39°37'14.13" (39.620592)
LONGITUDE	= 108°07'58.70" (108.132972)
NAD 27 (TARGET BOTTOM HOLE)	
LATITUDE	= 39°37'14.21" (39.620614)
LONGITUDE	= 108°07'56.41" (108.132336)

Encana OIL & GAS (USA) INC.

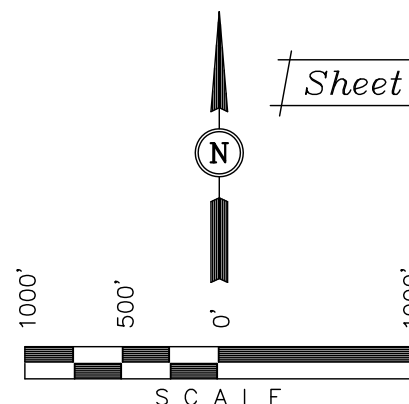
Well location, N. PARACHUTE WF02C-14 H15 596 (TARGET BOTTOM HOLE), located as shown in the NW 1/4 NE 1/4 of Section 14, T5S, R96W, 6th P.M., Garfield County, Colorado.

BASIS OF ELEVATION

SPOT ELEVATION AT THE NORTHWEST CORNER OF SECTION 30, T5S, R95W, 6th P.M. TAKEN FROM THE FORKED GULCH QUADRANGLE, COLORADO, GARFIELD COUNTY, 7.5 MINUTE SERIES (TOPOGRAPHICAL MAP) PUBLISHED BY THE UNITED STATES DEPARTMENT OF THE INTERIOR, GEOLOGICAL SURVEY. SAID ELEVATION IS MARKED AS BEING 5966 FEET.

BASIS OF BEARINGS

BASIS OF BEARINGS IS A G.P.S. OBSERVATION.



Sheet 1u of 11

CERTIFICATE

THIS IS TO CERTIFY THAT THE ABOVE PLAT WAS PREPARED AND LOCATION AS SHOWN WAS STAKED ON THE GROUND FROM FIELD NOTES OF ACTUAL SURVEYS MADE BY ME OR UNDER MY SUPERVISION AND THAT THE SAME ARE TRUE AND CORRECT TO THE BEST OF MY KNOWLEDGE AND BELIEF.

REGISTERED LAND SURVEYOR
REGISTRATION NO. 17492
STATE OF COLORADO
04-13-2012

Revised: 04-11-12 D.R.B.
Revised: 09-08-11 D.R.B.
Revised: 06-29-11 D.R.B.

UINTAH ENGINEERING & LAND SURVEYING
85 SOUTH 200 EAST - VERNAL, UTAH 84078
(435) 789-1017

SCALE 1" = 1000'	DATE SURVEYED: 11-22-10	DATE DRAWN: 06-15-11
PARTY G.O. T.M. D.R.B.	REFERENCES G.L.O. PLAT	
WEATHER COOL	FILE Encana OIL & GAS (USA) INC.	