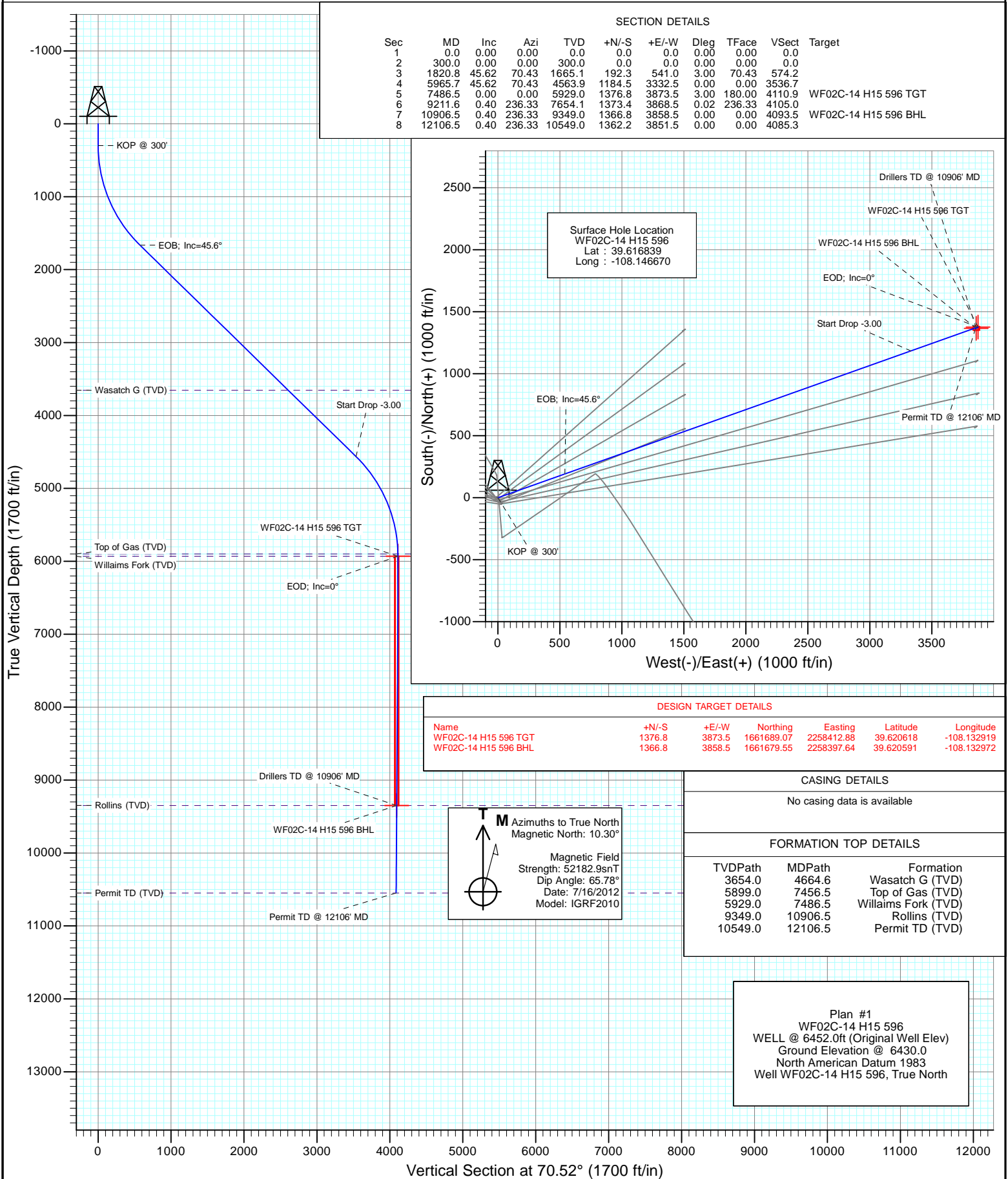




Project: North Piceance
Site: H15 596 (S15-T5S-R96W)
Well: WF02C-14 H15 596
Wellbore: DD
Design: Plan #1



Planning Report

Database:	USA EDM 5000 Multi Users DB	Local Co-ordinate Reference:	Well WF02C-14 H15 596
Company:	EnCana Oil & Gas (USA) Inc	TVD Reference:	WELL @ 6452.0ft (Original Well Elev)
Project:	North Piceance	MD Reference:	WELL @ 6452.0ft (Original Well Elev)
Site:	H15 596 (S15-T5S-R96W)	North Reference:	True
Well:	WF02C-14 H15 596	Survey Calculation Method:	Minimum Curvature
Wellbore:	DD		
Design:	Plan #1		

Project	North Piceance		
Map System:	US State Plane 1983	System Datum:	Mean Sea Level
Geo Datum:	North American Datum 1983		
Map Zone:	Colorado Central Zone		

Site		H15 596 (S15-T5S-R96W)			
Site Position:		Northing:	1,660,385.37 ft	Latitude:	39° 37' 0.23 N
From:	Lat/Long	Easting:	2,254,530.40 ft	Longitude:	108° 8' 47.62 W
Position Uncertainty:	0.0 ft	Slot Radius:	13.200 in	Grid Convergence:	-1.67 °

Well	WF02C-14 H15 596					
Well Position	+N-S	0.0 ft	Northing:	1,660,425.69 ft	Latitude:	39° 37' 0.62 N
	+E-W	0.0 ft	Easting:	2,254,500.92 ft	Longitude:	108° 8' 48.01 W
Position Uncertainty		0.0 ft	Wellhead Elevation:	ft	Ground Level:	6,430.0 ft

Wellbore	DD				
Magnetics	Model Name	Sample Date	Declination (°)	Dip Angle (°)	Field Strength (nT)
	IGRF2010	7/16/2012	10.30	65.78	52,183

Design	Plan #1			
Audit Notes:				
Version:	Phase:	PLAN	Tie On Depth:	0.0
Vertical Section:	Depth From (TVD) (ft)	+N/-S (ft)	+E/-W (ft)	Direction (°)
	0.0	0.0	0.0	70.52

Plan Sections										
Measured Depth (ft)	Inclination (°)	Azimuth (°)	Vertical Depth (ft)	+N/-S (ft)	+E/-W (ft)	Dogleg Rate (°/100ft)	Build Rate (°/100ft)	Turn Rate (°/100ft)	TFO (°)	Target
0.0	0.00	0.00	0.0	0.0	0.0	0.00	0.00	0.00	0.00	
300.0	0.00	0.00	300.0	0.0	0.0	0.00	0.00	0.00	0.00	
1,820.8	45.62	70.43	1,665.1	192.3	541.0	3.00	3.00	0.00	70.43	
5,965.7	45.62	70.43	4,563.9	1,184.5	3,332.5	0.00	0.00	0.00	0.00	
7,486.5	0.00	0.00	5,929.0	1,376.8	3,873.5	3.00	-3.00	0.00	180.00	WF02C-14 H15 596 T
9,211.6	0.40	236.33	7,654.1	1,373.4	3,868.5	0.02	0.02	-7.17	236.33	
10,906.5	0.40	236.33	9,349.0	1,366.8	3,858.5	0.00	0.00	0.00	0.00	WF02C-14 H15 596 E
12,106.5	0.40	236.33	10,549.0	1,362.2	3,851.5	0.00	0.00	0.00	0.00	

Planning Report

Database:	USA EDM 5000 Multi Users DB	Local Co-ordinate Reference:	Well WF02C-14 H15 596
Company:	EnCana Oil & Gas (USA) Inc	TVD Reference:	WELL @ 6452.0ft (Original Well Elev)
Project:	North Piceance	MD Reference:	WELL @ 6452.0ft (Original Well Elev)
Site:	H15 596 (S15-T5S-R96W)	North Reference:	True
Well:	WF02C-14 H15 596	Survey Calculation Method:	Minimum Curvature
Wellbore:	DD		
Design:	Plan #1		

Planned Survey									
Measured Depth (ft)	Inclination (°)	Azimuth (°)	Vertical Depth (ft)	+N/-S (ft)	+E/-W (ft)	Vertical Section (ft)	Dogleg Rate (°/100ft)	Build Rate (°/100ft)	Comments / Formations
0.0	0.00	0.00	0.0	0.0	0.0	0.0	0.00	0.00	
100.0	0.00	0.00	100.0	0.0	0.0	0.0	0.00	0.00	
200.0	0.00	0.00	200.0	0.0	0.0	0.0	0.00	0.00	
300.0	0.00	0.00	300.0	0.0	0.0	0.0	0.00	0.00	KOP @ 300'
400.0	3.00	70.43	400.0	0.9	2.5	2.6	3.00	3.00	
500.0	6.00	70.43	499.6	3.5	9.9	10.5	3.00	3.00	
600.0	9.00	70.43	598.8	7.9	22.2	23.5	3.00	3.00	
700.0	12.00	70.43	697.1	14.0	39.3	41.7	3.00	3.00	
800.0	15.00	70.43	794.3	21.8	61.3	65.1	3.00	3.00	
900.0	18.00	70.43	890.2	31.3	88.1	93.5	3.00	3.00	
1,000.0	21.00	70.43	984.4	42.5	119.5	126.9	3.00	3.00	
1,100.0	24.00	70.43	1,076.8	55.3	155.6	165.1	3.00	3.00	
1,200.0	27.00	70.43	1,167.1	69.7	196.1	208.2	3.00	3.00	
1,300.0	30.00	70.43	1,254.9	85.7	241.1	255.9	3.00	3.00	
1,400.0	33.00	70.43	1,340.2	103.2	290.3	308.1	3.00	3.00	
1,500.0	36.00	70.43	1,422.6	122.2	343.7	364.8	3.00	3.00	
1,600.0	39.00	70.43	1,501.9	142.5	401.0	425.6	3.00	3.00	
1,700.0	42.00	70.43	1,577.9	164.3	462.2	490.6	3.00	3.00	
1,800.0	45.00	70.43	1,650.5	187.3	527.1	559.4	3.00	3.00	
1,820.8	45.62	70.43	1,665.1	192.3	541.0	574.2	3.00	3.00	EOB; Inc=45.6°
1,900.0	45.62	70.43	1,720.5	211.3	594.4	630.8	0.00	0.00	
2,000.0	45.62	70.43	1,790.4	235.2	661.7	702.3	0.00	0.00	
2,100.0	45.62	70.43	1,860.4	259.1	729.0	773.7	0.00	0.00	
2,200.0	45.62	70.43	1,930.3	283.1	796.4	845.2	0.00	0.00	
2,300.0	45.62	70.43	2,000.2	307.0	863.7	916.7	0.00	0.00	
2,400.0	45.62	70.43	2,070.2	330.9	931.1	988.2	0.00	0.00	
2,500.0	45.62	70.43	2,140.1	354.9	998.4	1,059.6	0.00	0.00	
2,600.0	45.62	70.43	2,210.1	378.8	1,065.8	1,131.1	0.00	0.00	
2,700.0	45.62	70.43	2,280.0	402.8	1,133.1	1,202.6	0.00	0.00	
2,800.0	45.62	70.43	2,349.9	426.7	1,200.5	1,274.1	0.00	0.00	
2,900.0	45.62	70.43	2,419.9	450.6	1,267.8	1,345.5	0.00	0.00	
3,000.0	45.62	70.43	2,489.8	474.6	1,335.2	1,417.0	0.00	0.00	
3,100.0	45.62	70.43	2,559.7	498.5	1,402.5	1,488.5	0.00	0.00	
3,200.0	45.62	70.43	2,629.7	522.5	1,469.9	1,560.0	0.00	0.00	
3,300.0	45.62	70.43	2,699.6	546.4	1,537.2	1,631.4	0.00	0.00	
3,400.0	45.62	70.43	2,769.6	570.3	1,604.6	1,702.9	0.00	0.00	
3,500.0	45.62	70.43	2,839.5	594.3	1,671.9	1,774.4	0.00	0.00	
3,600.0	45.62	70.43	2,909.4	618.2	1,739.3	1,845.9	0.00	0.00	
3,700.0	45.62	70.43	2,979.4	642.1	1,806.6	1,917.3	0.00	0.00	
3,800.0	45.62	70.43	3,049.3	666.1	1,874.0	1,988.8	0.00	0.00	
3,900.0	45.62	70.43	3,119.2	690.0	1,941.3	2,060.3	0.00	0.00	
4,000.0	45.62	70.43	3,189.2	714.0	2,008.7	2,131.8	0.00	0.00	
4,100.0	45.62	70.43	3,259.1	737.9	2,076.0	2,203.2	0.00	0.00	
4,200.0	45.62	70.43	3,329.0	761.8	2,143.4	2,274.7	0.00	0.00	
4,300.0	45.62	70.43	3,399.0	785.8	2,210.7	2,346.2	0.00	0.00	
4,400.0	45.62	70.43	3,468.9	809.7	2,278.1	2,417.7	0.00	0.00	
4,500.0	45.62	70.43	3,538.9	833.7	2,345.4	2,489.1	0.00	0.00	
4,600.0	45.62	70.43	3,608.8	857.6	2,412.7	2,560.6	0.00	0.00	
4,664.6	45.62	70.43	3,654.0	873.1	2,456.3	2,606.8	0.00	0.00	Wasatch G (TVD)
4,700.0	45.62	70.43	3,678.7	881.5	2,480.1	2,632.1	0.00	0.00	
4,800.0	45.62	70.43	3,748.7	905.5	2,547.4	2,703.6	0.00	0.00	
4,900.0	45.62	70.43	3,818.6	929.4	2,614.8	2,775.1	0.00	0.00	

Planning Report

Database:	USA EDM 5000 Multi Users DB	Local Co-ordinate Reference:	Well WF02C-14 H15 596
Company:	EnCana Oil & Gas (USA) Inc	TVD Reference:	WELL @ 6452.0ft (Original Well Elev)
Project:	North Piceance	MD Reference:	WELL @ 6452.0ft (Original Well Elev)
Site:	H15 596 (S15-T5S-R96W)	North Reference:	True
Well:	WF02C-14 H15 596	Survey Calculation Method:	Minimum Curvature
Wellbore:	DD		
Design:	Plan #1		

Planned Survey									
Measured Depth (ft)	Inclination (°)	Azimuth (°)	Vertical Depth (ft)	+N/-S (ft)	+E/-W (ft)	Vertical Section (ft)	Dogleg Rate (°/100ft)	Build Rate (°/100ft)	Comments / Formations
5,000.0	45.62	70.43	3,888.5	953.3	2,682.1	2,846.5	0.00	0.00	
5,100.0	45.62	70.43	3,958.5	977.3	2,749.5	2,918.0	0.00	0.00	
5,200.0	45.62	70.43	4,028.4	1,001.2	2,816.8	2,989.5	0.00	0.00	
5,300.0	45.62	70.43	4,098.4	1,025.2	2,884.2	3,061.0	0.00	0.00	
5,400.0	45.62	70.43	4,168.3	1,049.1	2,951.5	3,132.4	0.00	0.00	
5,500.0	45.62	70.43	4,238.2	1,073.0	3,018.9	3,203.9	0.00	0.00	
5,600.0	45.62	70.43	4,308.2	1,097.0	3,086.2	3,275.4	0.00	0.00	
5,700.0	45.62	70.43	4,378.1	1,120.9	3,153.6	3,346.9	0.00	0.00	
5,800.0	45.62	70.43	4,448.0	1,144.8	3,220.9	3,418.3	0.00	0.00	
5,900.0	45.62	70.43	4,518.0	1,168.8	3,288.3	3,489.8	0.00	0.00	
5,965.7	45.62	70.43	4,563.9	1,184.5	3,332.5	3,536.7	0.00	0.00	Start Drop -3.00
6,000.0	44.59	70.43	4,588.1	1,192.7	3,355.4	3,561.1	3.00	-3.00	
6,100.0	41.59	70.43	4,661.2	1,215.5	3,419.8	3,629.4	3.00	-3.00	
6,200.0	38.59	70.43	4,737.6	1,237.1	3,480.5	3,693.8	3.00	-3.00	
6,300.0	35.59	70.43	4,817.4	1,257.3	3,537.3	3,754.1	3.00	-3.00	
6,400.0	32.59	70.43	4,900.2	1,276.1	3,590.1	3,810.1	3.00	-3.00	
6,500.0	29.59	70.43	4,985.8	1,293.4	3,638.7	3,861.8	3.00	-3.00	
6,600.0	26.59	70.43	5,074.0	1,309.1	3,683.1	3,908.8	3.00	-3.00	
6,700.0	23.59	70.43	5,164.6	1,323.3	3,723.1	3,951.3	3.00	-3.00	
6,800.0	20.59	70.43	5,257.2	1,335.9	3,758.5	3,988.9	3.00	-3.00	
6,900.0	17.59	70.43	5,351.7	1,346.9	3,789.3	4,021.6	3.00	-3.00	
7,000.0	14.59	70.43	5,447.8	1,356.2	3,815.4	4,049.3	3.00	-3.00	
7,100.0	11.59	70.43	5,545.2	1,363.7	3,836.8	4,071.9	3.00	-3.00	
7,200.0	8.59	70.43	5,643.6	1,369.6	3,853.3	4,089.5	3.00	-3.00	
7,300.0	5.59	70.43	5,742.8	1,373.8	3,864.9	4,101.8	3.00	-3.00	
7,400.0	2.59	70.43	5,842.6	1,376.1	3,871.7	4,108.9	3.00	-3.00	
7,456.5	0.90	70.43	5,899.0	1,376.7	3,873.3	4,110.7	3.00	-3.00	Top of Gas (TVD)
7,486.5	0.00	0.00	5,929.0	1,376.8	3,873.5	4,110.9	3.00	-3.00	EOD; Inc=0° - Willaims Fork (TVD) - WF02C-14
7,500.0	0.00	236.33	5,942.5	1,376.8	3,873.5	4,110.9	0.02	0.02	
7,600.0	0.03	236.33	6,042.5	1,376.8	3,873.5	4,110.9	0.02	0.02	
7,700.0	0.05	236.33	6,142.5	1,376.7	3,873.4	4,110.8	0.02	0.02	
7,800.0	0.07	236.33	6,242.5	1,376.7	3,873.3	4,110.7	0.02	0.02	
7,900.0	0.10	236.33	6,342.5	1,376.6	3,873.2	4,110.6	0.02	0.02	
8,000.0	0.12	236.33	6,442.5	1,376.5	3,873.1	4,110.4	0.02	0.02	
8,100.0	0.14	236.33	6,542.5	1,376.4	3,872.9	4,110.2	0.02	0.02	
8,200.0	0.17	236.33	6,642.5	1,376.2	3,872.6	4,109.9	0.02	0.02	
8,300.0	0.19	236.33	6,742.5	1,376.1	3,872.4	4,109.6	0.02	0.02	
8,400.0	0.21	236.33	6,842.5	1,375.9	3,872.1	4,109.3	0.02	0.02	
8,500.0	0.24	236.33	6,942.5	1,375.6	3,871.8	4,108.9	0.02	0.02	
8,600.0	0.26	236.33	7,042.5	1,375.4	3,871.4	4,108.5	0.02	0.02	
8,700.0	0.28	236.33	7,142.5	1,375.1	3,871.0	4,108.0	0.02	0.02	
8,800.0	0.31	236.33	7,242.5	1,374.9	3,870.6	4,107.5	0.02	0.02	
8,900.0	0.33	236.33	7,342.5	1,374.5	3,870.1	4,107.0	0.02	0.02	
9,000.0	0.35	236.33	7,442.5	1,374.2	3,869.6	4,106.4	0.02	0.02	
9,100.0	0.38	236.33	7,542.5	1,373.9	3,869.1	4,105.8	0.02	0.02	
9,200.0	0.40	236.33	7,642.5	1,373.5	3,868.5	4,105.1	0.02	0.02	
9,211.6	0.40	236.33	7,654.1	1,373.4	3,868.5	4,105.0	0.02	0.02	
9,300.0	0.40	236.33	7,742.5	1,373.1	3,867.9	4,104.4	0.00	0.00	
9,400.0	0.40	236.33	7,842.5	1,372.7	3,867.4	4,103.7	0.00	0.00	
9,500.0	0.40	236.33	7,942.5	1,372.3	3,866.8	4,103.1	0.00	0.00	
9,600.0	0.40	236.33	8,042.5	1,371.9	3,866.2	4,102.4	0.00	0.00	
9,700.0	0.40	236.33	8,142.5	1,371.5	3,865.6	4,101.7	0.00	0.00	

Planning Report

Database:	USA EDM 5000 Multi Users DB	Local Co-ordinate Reference:	Well WF02C-14 H15 596
Company:	EnCana Oil & Gas (USA) Inc	TVD Reference:	WELL @ 6452.0ft (Original Well Elev)
Project:	North Piceance	MD Reference:	WELL @ 6452.0ft (Original Well Elev)
Site:	H15 596 (S15-T5S-R96W)	North Reference:	True
Well:	WF02C-14 H15 596	Survey Calculation Method:	Minimum Curvature
Wellbore:	DD		
Design:	Plan #1		

Planned Survey

Measured Depth (ft)	Inclination (°)	Azimuth (°)	Vertical Depth (ft)	+N/-S (ft)	+E/-W (ft)	Vertical Section (ft)	Dogleg Rate (°/100ft)	Build Rate (°/100ft)	Comments / Formations
9,800.0	0.40	236.33	8,242.5	1,371.1	3,865.0	4,101.0	0.00	0.00	
9,900.0	0.40	236.33	8,342.5	1,370.8	3,864.4	4,100.3	0.00	0.00	
10,000.0	0.40	236.33	8,442.5	1,370.4	3,863.8	4,099.7	0.00	0.00	
10,100.0	0.40	236.33	8,542.5	1,370.0	3,863.3	4,099.0	0.00	0.00	
10,200.0	0.40	236.33	8,642.5	1,369.6	3,862.7	4,098.3	0.00	0.00	
10,300.0	0.40	236.33	8,742.5	1,369.2	3,862.1	4,097.6	0.00	0.00	
10,400.0	0.40	236.33	8,842.5	1,368.8	3,861.5	4,096.9	0.00	0.00	
10,500.0	0.40	236.33	8,942.5	1,368.4	3,860.9	4,096.3	0.00	0.00	
10,600.0	0.40	236.33	9,042.5	1,368.0	3,860.3	4,095.6	0.00	0.00	
10,700.0	0.40	236.33	9,142.5	1,367.6	3,859.8	4,094.9	0.00	0.00	
10,800.0	0.40	236.33	9,242.5	1,367.3	3,859.2	4,094.2	0.00	0.00	
10,900.0	0.40	236.33	9,342.5	1,366.9	3,858.6	4,093.5	0.00	0.00	
10,906.5	0.40	236.33	9,349.0	1,366.8	3,858.5	4,093.5	0.00	0.00	Drillers TD @ 10906' MD - Rollins (TVD) - WF0
11,000.0	0.40	236.33	9,442.5	1,366.5	3,858.0	4,092.9	0.00	0.00	
11,100.0	0.40	236.33	9,542.5	1,366.1	3,857.4	4,092.2	0.00	0.00	
11,200.0	0.40	236.33	9,642.5	1,365.7	3,856.8	4,091.5	0.00	0.00	
11,300.0	0.40	236.33	9,742.5	1,365.3	3,856.2	4,090.8	0.00	0.00	
11,400.0	0.40	236.33	9,842.5	1,364.9	3,855.7	4,090.1	0.00	0.00	
11,500.0	0.40	236.33	9,942.5	1,364.5	3,855.1	4,089.4	0.00	0.00	
11,600.0	0.40	236.33	10,042.5	1,364.1	3,854.5	4,088.8	0.00	0.00	
11,700.0	0.40	236.33	10,142.5	1,363.8	3,853.9	4,088.1	0.00	0.00	
11,800.0	0.40	236.33	10,242.5	1,363.4	3,853.3	4,087.4	0.00	0.00	
11,900.0	0.40	236.33	10,342.5	1,363.0	3,852.7	4,086.7	0.00	0.00	
12,000.0	0.40	236.33	10,442.5	1,362.6	3,852.2	4,086.0	0.00	0.00	
12,100.0	0.40	236.33	10,542.5	1,362.2	3,851.6	4,085.4	0.00	0.00	
12,106.5	0.40	236.33	10,549.0	1,362.2	3,851.5	4,085.3	0.00	0.00	Permit TD @ 12106' MD

Targets

Target Name	Dip Angle (°)	Dip Dir. (°)	TVD (ft)	+N/-S (ft)	+E/-W (ft)	Northing (ft)	Easting (ft)	Latitude	Longitude
- hit/miss target									
- Shape									
WF02C-14 H15 596 BHI	0.00	0.00	9,349.0	1,366.8	3,858.5	1,661,679.55	2,258,397.64	39° 37' 14.13 N	108° 7' 58.70 W
- plan hits target center									
- Rectangle (sides W30.0 H50.0 D0.0)									
WF02C-14 H15 596 TG	0.00	0.00	5,929.0	1,376.8	3,873.5	1,661,689.07	2,258,412.88	39° 37' 14.22 N	108° 7' 58.51 W
- plan hits target center									
- Point									

Formations

Measured Depth (ft)	Vertical Depth (ft)	Name	Lithology	Dip (°)	Dip Direction (°)
4,664.6	3,654.0	Wasatch G (TVD)			
7,456.5	5,899.0	Top of Gas (TVD)			
7,486.5	5,929.0	Willams Fork (TVD)			
10,906.5	9,349.0	Rollins (TVD)			
12,106.5	10,549.0	Permit TD (TVD)			

Planning Report

Database:	USA EDM 5000 Multi Users DB	Local Co-ordinate Reference:	Well WF02C-14 H15 596
Company:	EnCana Oil & Gas (USA) Inc	TVD Reference:	WELL @ 6452.0ft (Original Well Elev)
Project:	North Piceance	MD Reference:	WELL @ 6452.0ft (Original Well Elev)
Site:	H15 596 (S15-T5S-R96W)	North Reference:	True
Well:	WF02C-14 H15 596	Survey Calculation Method:	Minimum Curvature
Wellbore:	DD		
Design:	Plan #1		

Plan Annotations				
Measured Depth (ft)	Vertical Depth (ft)	Local Coordinates		Comment
		+N/-S (ft)	+E/-W (ft)	
300.0	300.0	0.0	0.0	KOP @ 300'
1,820.8	1,665.1	192.3	541.0	EOB; Inc=45.6°
5,965.7	4,563.9	1,184.5	3,332.5	Start Drop -3.00
7,486.5	5,929.0	1,376.8	3,873.5	EOD; Inc=0°
10,906.5	9,349.0	1,373.4	3,868.5	Drillers TD @ 10906' MD
12,106.5	10,549.0	1,366.8	3,858.5	Permit TD @ 12106' MD