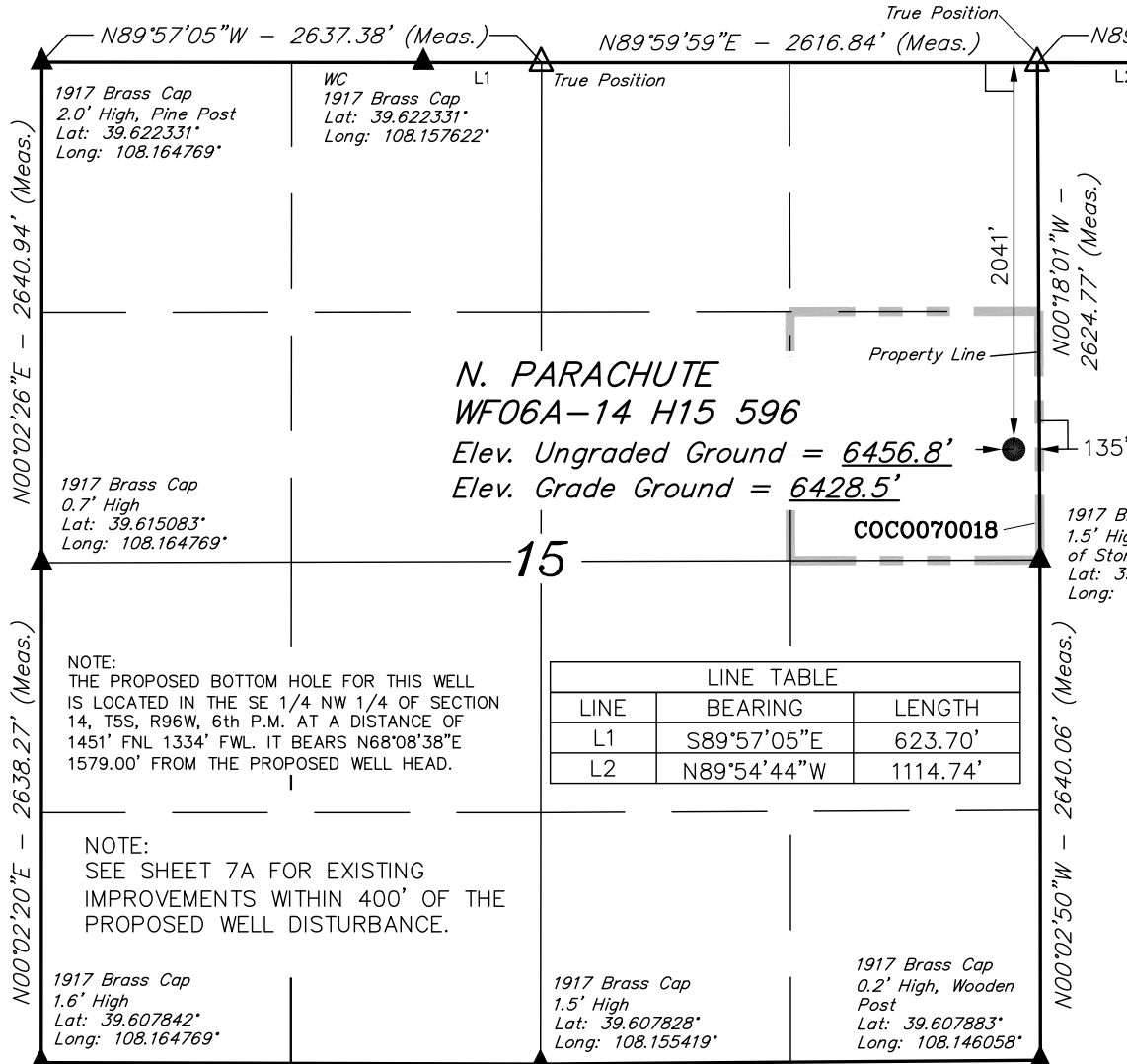


T5S, R96W, 6th P.M.

Well location, N. PARACHUTE WF06A-14 H15 596 (SURFACE LOCATION), located as shown in the SE 1/4 NE 1/4 of Section 15, T5S, R96W, 6th P.M., Garfield County, Colorado.



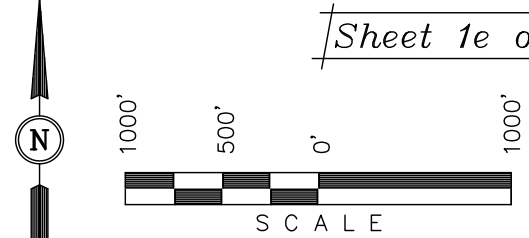
BASIS OF ELEVATION

SPOT ELEVATION AT THE NORTHWEST CORNER OF SECTION 30, T5S, R95W, 6th P.M. TAKEN FROM THE FORKED GULCH QUADRANGLE, COLORADO, GARFIELD COUNTY, 7.5 MINUTE SERIES (TOPOGRAPHICAL MAP) PUBLISHED BY THE UNITED STATES DEPARTMENT OF THE INTERIOR, GEOLOGICAL SURVEY. SAID ELEVATION IS MARKED AS BEING 5966 FEET.

BASIS OF BEARINGS

BASIS OF BEARINGS IS A G.P.S. OBSERVATION.

Sheet 1e of 11



LINE TABLE		
LINE	BEARING	LENGTH
L1	S89°57'05"E	623.70'
L2	N89°54'44"W	1114.74'

NOTE: THE PROPOSED BOTTOM HOLE FOR THIS WELL IS LOCATED IN THE SE 1/4 NW 1/4 OF SECTION 14, T5S, R96W, 6th P.M. AT A DISTANCE OF 1451' FNL 1334' FWL. IT BEARS N68°08'38"E 1579.00' FROM THE PROPOSED WELL HEAD.

NOTE: SEE SHEET 7A FOR EXISTING IMPROVEMENTS WITHIN 400' OF THE PROPOSED WELL DISTURBANCE.

CERTIFICATE  
 THIS IS TO CERTIFY THAT THE ABOVE PLAT WAS PREPARED AND LOCATION AS SHOWN WAS STAKED ON THE GROUND FROM FIELD NOTES OF ACTUAL SURVEYS MADE BY ME OR UNDER MY SUPERVISION AND THAT THE SAME ARE TRUE AND CORRECT TO THE BEST OF MY KNOWLEDGE AND BELIEF.  
 Registered Land Surveyor  
 REGISTRATION NO. 17492  
 STATE OF COLORADO  
 04-13-2012

Revised: 04-11-12 D.R.B.  
 Revised: 09-08-11 D.R.B.

**UINTAH ENGINEERING & LAND SURVEYING**  
 85 SOUTH 200 EAST - VERNAL, UTAH 84078  
 (435) 789-1017

LEGEND: N89°50'32"W - 2635.25' (Meas.) S89°34'40"W - 2638.64' (Meas.)

- └─┘ = 90° SYMBOL
- = PROPOSED WELL HEAD.
- ▲ = SECTION CORNERS LOCATED.
- △ = SECTION CORNERS RE-EST. (Not Set on Ground)

PDOP = 2.6

NAD 83 (SURFACE LOCATION)	
LATITUDE	= 39°37'00.23" (39.616731)
LONGITUDE	= 108°08'47.62" (108.146561)
NAD 27 (SURFACE LOCATION)	
LATITUDE	= 39°37'00.31" (39.616753)
LONGITUDE	= 108°08'45.33" (108.145925)

SCALE 1" = 1000'	DATE SURVEYED: 11-22-10	DATE DRAWN: 06-15-11
PARTY G.O. T.M. D.R.B.	REFERENCES G.L.O. PLAT	
WEATHER COOL	FILE Encana OIL & GAS (USA) INC.	

Encana OIL & GAS (USA) INC.

T5S, R96W, 6th P.M.

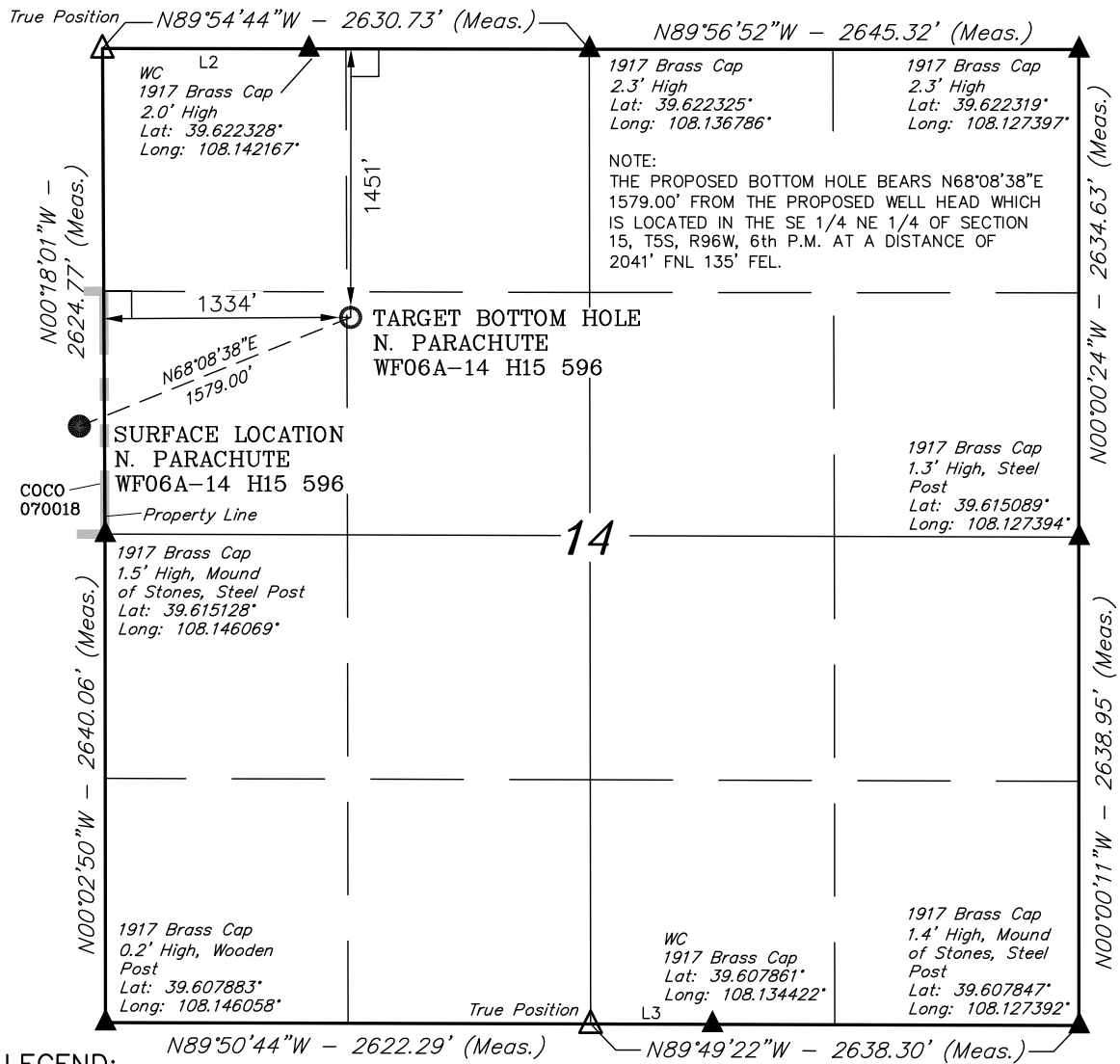
Well location, N. PARACHUTE WF06A-14 H15 596 (TARGET BOTTOM HOLE), located as shown in the SE 1/4 NW 1/4 of Section 14, T5S, R96W, 6th P.M., Garfield County, Colorado.

BASIS OF ELEVATION

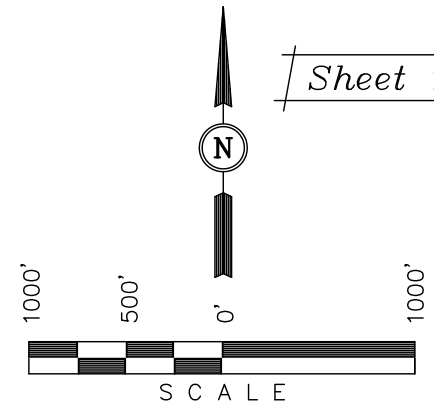
SPOT ELEVATION AT THE NORTHWEST CORNER OF SECTION 30, T5S, R95W, 6th P.M. TAKEN FROM THE FORKED GULCH QUADRANGLE, COLORADO, GARFIELD COUNTY, 7.5 MINUTE SERIES (TOPOGRAPHICAL MAP) PUBLISHED BY THE UNITED STATES DEPARTMENT OF THE INTERIOR, GEOLOGICAL SURVEY. SAID ELEVATION IS MARKED AS BEING 5966 FEET.

BASIS OF BEARINGS

BASIS OF BEARINGS IS A G.P.S. OBSERVATION.



Sheet 1 of 11



CERTIFICATE

THIS IS TO CERTIFY THAT THE ABOVE PLAT WAS PREPARED AND LOCATION AS SHOWN WAS STAKED ON THE GROUND FROM FIELD NOTES OF ACTUAL SURVEYS MADE BY ME OR UNDER MY SUPERVISION AND THAT THE SAME ARE TRUE AND CORRECT TO THE BEST OF MY KNOWLEDGE AND BELIEF.

*John J. Hester*  
 REGISTERED LAND SURVEYOR  
 REGISTRATION NO. 17492  
 STATE OF COLORADO  
 04-13-2012

Revised: 04-11-12 D.R.B.  
 Revised: 09-08-11 D.R.B.  
 Revised: 06-29-11 D.R.B.

LEGEND:

- └─┘ = 90° SYMBOL
- = PROPOSED WELL HEAD.
- ▲ = SECTION CORNERS LOCATED.
- △ = SECTION CORNERS RE-EST. (Not Set on Ground)

<b>NAD 83 (TARGET BOTTOM HOLE)</b>	
LATITUDE	= 39°37'06.04" (39.618344)
LONGITUDE	= 108°08'28.90" (108.141361)
<b>NAD 27 (TARGET BOTTOM HOLE)</b>	
LATITUDE	= 39°37'06.13" (39.618369)
LONGITUDE	= 108°08'26.61" (108.140725)

<b>UINTAH ENGINEERING &amp; LAND SURVEYING</b>		
85 SOUTH 200 EAST - VERNAL, UTAH 84078		
(435) 789-1017		
SCALE 1" = 1000'	DATE SURVEYED: 11-22-10	DATE DRAWN: 06-15-11
PARTY G.O. T.M. D.R.B.	REFERENCES G.L.O. PLAT	
WEATHER COOL	FILE Encana OIL & GAS (USA) INC.	