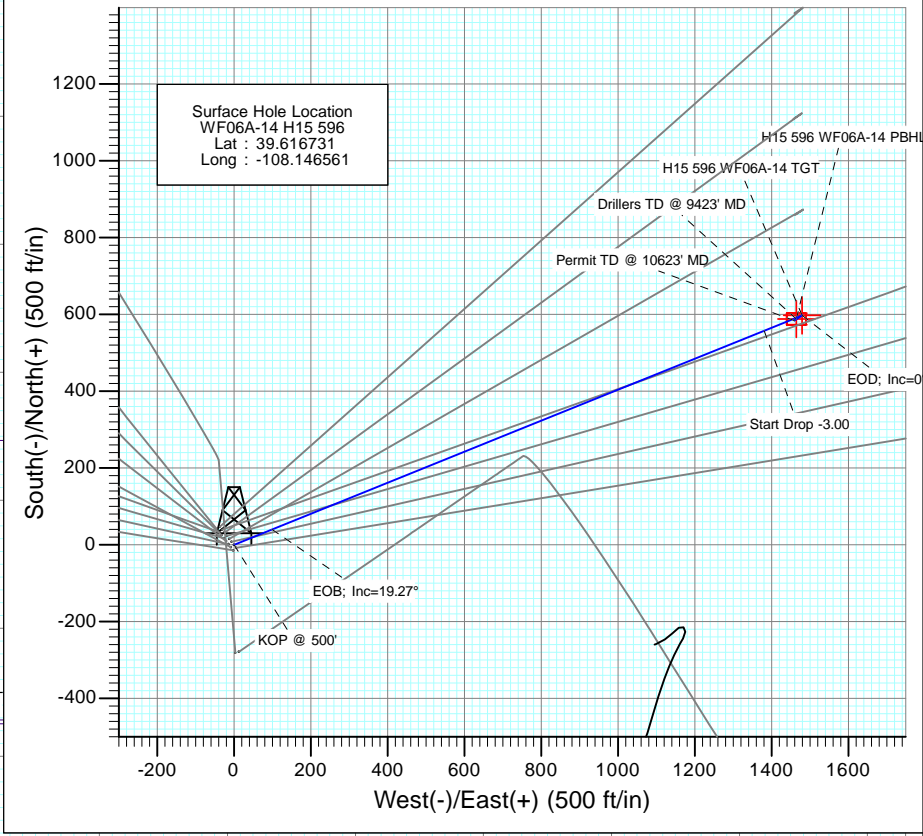


SECTION DETAILS										
Sec	MD	Inc	Azi	TVD	+N/-S	+E/-W	Dleg	TFace	V Sect	Target
1	0.0	0.00	0.00	0.0	0.0	0.0	0.00	0.00	0.0	
2	500.0	0.00	0.00	500.0	0.0	0.0	0.00	0.00	0.0	
3	1142.2	19.27	68.00	1130.2	40.1	99.2	3.00	68.00	107.0	
4	5331.5	19.27	68.00	5084.8	557.9	1380.7	0.00	0.00	1489.2	
5	5973.7	0.00	0.00	5715.0	598.0	1479.9	3.00	180.00	1596.1	H15 596 WF06A-14 TGT
6	6095.4	0.30	236.34	5836.7	597.8	1479.6	0.25	236.34	1595.8	
7	9423.7	0.30	236.34	9165.0	588.0	1464.9	0.00	0.00	1578.5	H15 596 WF06A-14 PBHL
8	10623.7	0.30	236.34	10365.0	584.5	1459.6	0.00	0.00	1572.3	



DESIGN TARGET DETAILS						
Name	+N/-S	+E/-W	Northing	Easting	Latitude	Longitude
H15 596 WF06A-14 TGT	598.0	1479.9	1660940.01	2256027.10	39.618372	-108.141307
H15 596 WF06A-14 PBHL	588.0	1464.9	1660930.48	2256011.83	39.618345	-108.141361

CASING DETAILS
No casing data is available

FORMATION TOP DETAILS		
TVDPath	MDPath	Formation
3531.0	3685.5	Wasatch G (TVD)
5715.0	5973.7	Top of Gas (TVD)
5745.0	6003.7	Willaims Fork (TVD)
9165.0	9423.7	Rollins (TVD)

**M** Azimuths to True North  
 Magnetic North: 10.29°

Magnetic Field  
 Strength: 52182.8snT  
 Dip Angle: 65.78°  
 Date: 7/16/2012  
 Model: IGRF2010

Plan #1  
 WF06A-14 H15 596  
 12xxx; LR  
 WELL @ 6452.0ft (Original Well Elev)  
 Ground Elevation @ 6430.0  
 North American Datum 1983  
 Well WF06A-14 H15 596, True North

## Planning Report

<b>Database:</b> USA EDM 5000 Multi Users DB	<b>Local Co-ordinate Reference:</b> Well WF06A-14 H15 596
<b>Company:</b> EnCana Oil & Gas (USA) Inc	<b>TVD Reference:</b> WELL @ 6452.0ft (Original Well Elev)
<b>Project:</b> North Piceance	<b>MD Reference:</b> WELL @ 6452.0ft (Original Well Elev)
<b>Site:</b> H15 596 (S15-T5S-R96W)	<b>North Reference:</b> True
<b>Well:</b> WF06A-14 H15 596	<b>Survey Calculation Method:</b> Minimum Curvature
<b>Wellbore:</b> DD	
<b>Design:</b> Plan #1	

<b>Project</b> North Piceance		
<b>Map System:</b> US State Plane 1983	<b>System Datum:</b> Mean Sea Level	
<b>Geo Datum:</b> North American Datum 1983		
<b>Map Zone:</b> Colorado Central Zone		

<b>Site</b> H15 596 (S15-T5S-R96W)					
<b>Site Position:</b>		<b>Northing:</b>	1,660,385.37 ft	<b>Latitude:</b>	39.616731
<b>From:</b> Lat/Long		<b>Easting:</b>	2,254,530.40 ft	<b>Longitude:</b>	-108.146561
<b>Position Uncertainty:</b>	0.0 ft	<b>Slot Radius:</b>	13.200 in	<b>Grid Convergence:</b>	-1.67 °

<b>Well</b> WF06A-14 H15 596						
<b>Well Position</b>	<b>+N/-S</b>	0.0 ft	<b>Northing:</b>	1,660,385.37 ft	<b>Latitude:</b>	39.616731
	<b>+E/-W</b>	0.0 ft	<b>Easting:</b>	2,254,530.40 ft	<b>Longitude:</b>	-108.146561
<b>Position Uncertainty</b>		0.0 ft	<b>Wellhead Elevation:</b>	ft	<b>Ground Level:</b>	6,430.0 ft

<b>Wellbore</b> DD					
<b>Magnetics</b>	<b>Model Name</b>	<b>Sample Date</b>	<b>Declination</b>	<b>Dip Angle</b>	<b>Field Strength</b>
	IGRF2010	7/16/2012	(°)	(°)	(nT)
			10.30	65.78	52,183

<b>Design</b> Plan #1				
<b>Audit Notes:</b>				
<b>Version:</b>	<b>Phase:</b>	PLAN	<b>Tie On Depth:</b>	0.0
<b>Vertical Section:</b>	<b>Depth From (TVD)</b>	<b>+N/-S</b>	<b>+E/-W</b>	<b>Direction</b>
	(ft)	(ft)	(ft)	(°)
	0.0	0.0	0.0	68.13

<b>Plan Sections</b>										
Measured Depth (ft)	Inclination (°)	Azimuth (°)	Vertical Depth (ft)	+N/-S (ft)	+E/-W (ft)	Dogleg Rate (°/100ft)	Build Rate (°/100ft)	Turn Rate (°/100ft)	TFO (°)	Target
0.0	0.00	0.00	0.0	0.0	0.0	0.00	0.00	0.00	0.00	
500.0	0.00	0.00	500.0	0.0	0.0	0.00	0.00	0.00	0.00	
1,142.2	19.27	68.00	1,130.2	40.1	99.2	3.00	3.00	0.00	68.00	
5,331.5	19.27	68.00	5,084.8	557.9	1,380.7	0.00	0.00	0.00	0.00	
5,973.7	0.00	0.00	5,715.0	598.0	1,479.9	3.00	-3.00	0.00	180.00	H15 596 WF06A-14 T
6,095.4	0.30	236.34	5,836.7	597.8	1,479.6	0.25	0.25	-101.63	236.34	
9,423.7	0.30	236.34	9,165.0	588.0	1,464.9	0.00	0.00	0.00	0.00	H15 596 WF06A-14 F
10,623.7	0.30	236.34	10,365.0	584.5	1,459.6	0.00	0.00	0.00	0.00	

## Planning Report

<b>Database:</b>	USA EDM 5000 Multi Users DB	<b>Local Co-ordinate Reference:</b>	Well WF06A-14 H15 596
<b>Company:</b>	EnCana Oil & Gas (USA) Inc	<b>TVD Reference:</b>	WELL @ 6452.0ft (Original Well Elev)
<b>Project:</b>	North Piceance	<b>MD Reference:</b>	WELL @ 6452.0ft (Original Well Elev)
<b>Site:</b>	H15 596 (S15-T5S-R96W)	<b>North Reference:</b>	True
<b>Well:</b>	WF06A-14 H15 596	<b>Survey Calculation Method:</b>	Minimum Curvature
<b>Wellbore:</b>	DD		
<b>Design:</b>	Plan #1		

Planned Survey									
Measured Depth (ft)	Inclination (°)	Azimuth (°)	Vertical Depth (ft)	+N/-S (ft)	+E/-W (ft)	Vertical Section (ft)	Dogleg Rate (°/100ft)	Build Rate (°/100ft)	Comments / Formations
0.0	0.00	0.00	0.0	0.0	0.0	0.0	0.00	0.00	
100.0	0.00	0.00	100.0	0.0	0.0	0.0	0.00	0.00	
200.0	0.00	0.00	200.0	0.0	0.0	0.0	0.00	0.00	
300.0	0.00	0.00	300.0	0.0	0.0	0.0	0.00	0.00	
400.0	0.00	0.00	400.0	0.0	0.0	0.0	0.00	0.00	
500.0	0.00	0.00	500.0	0.0	0.0	0.0	0.00	0.00	KOP @ 500'
600.0	3.00	68.00	600.0	1.0	2.4	2.6	3.00	3.00	
700.0	6.00	68.00	699.6	3.9	9.7	10.5	3.00	3.00	
800.0	9.00	68.00	798.8	8.8	21.8	23.5	3.00	3.00	
900.0	12.00	68.00	897.1	15.6	38.7	41.7	3.00	3.00	
1,000.0	15.00	68.00	994.3	24.4	60.3	65.1	3.00	3.00	
1,100.0	18.00	68.00	1,090.2	35.0	86.7	93.5	3.00	3.00	
1,142.2	19.27	68.00	1,130.2	40.1	99.2	107.0	3.00	3.00	EOB; Inc=19.27°
1,200.0	19.27	68.00	1,184.7	47.2	116.8	126.0	0.00	0.00	
1,300.0	19.27	68.00	1,279.1	59.6	147.4	159.0	0.00	0.00	
1,400.0	19.27	68.00	1,373.5	71.9	178.0	192.0	0.00	0.00	
1,500.0	19.27	68.00	1,467.9	84.3	208.6	225.0	0.00	0.00	
1,600.0	19.27	68.00	1,562.3	96.7	239.2	258.0	0.00	0.00	
1,700.0	19.27	68.00	1,656.7	109.0	269.8	291.0	0.00	0.00	
1,800.0	19.27	68.00	1,751.1	121.4	300.4	324.0	0.00	0.00	
1,900.0	19.27	68.00	1,845.5	133.7	331.0	357.0	0.00	0.00	
2,000.0	19.27	68.00	1,939.9	146.1	361.6	390.0	0.00	0.00	
2,100.0	19.27	68.00	2,034.3	158.5	392.2	423.0	0.00	0.00	
2,200.0	19.27	68.00	2,128.7	170.8	422.8	456.0	0.00	0.00	
2,300.0	19.27	68.00	2,223.1	183.2	453.4	489.0	0.00	0.00	
2,400.0	19.27	68.00	2,317.5	195.6	483.9	522.0	0.00	0.00	
2,500.0	19.27	68.00	2,411.9	207.9	514.5	555.0	0.00	0.00	
2,600.0	19.27	68.00	2,506.3	220.3	545.1	588.0	0.00	0.00	
2,700.0	19.27	68.00	2,600.7	232.6	575.7	620.9	0.00	0.00	
2,800.0	19.27	68.00	2,695.1	245.0	606.3	653.9	0.00	0.00	
2,900.0	19.27	68.00	2,789.5	257.4	636.9	686.9	0.00	0.00	
3,000.0	19.27	68.00	2,883.9	269.7	667.5	719.9	0.00	0.00	
3,100.0	19.27	68.00	2,978.3	282.1	698.1	752.9	0.00	0.00	
3,200.0	19.27	68.00	3,072.7	294.4	728.7	785.9	0.00	0.00	
3,300.0	19.27	68.00	3,167.1	306.8	759.3	818.9	0.00	0.00	
3,400.0	19.27	68.00	3,261.5	319.2	789.9	851.9	0.00	0.00	
3,500.0	19.27	68.00	3,355.9	331.5	820.5	884.9	0.00	0.00	
3,600.0	19.27	68.00	3,450.3	343.9	851.0	917.9	0.00	0.00	
3,685.5	19.27	68.00	3,531.0	354.5	877.2	946.1	0.00	0.00	Wasatch G (TVD)
3,700.0	19.27	68.00	3,544.7	356.3	881.6	950.9	0.00	0.00	
3,800.0	19.27	68.00	3,639.1	368.6	912.2	983.9	0.00	0.00	
3,900.0	19.27	68.00	3,733.5	381.0	942.8	1,016.9	0.00	0.00	
4,000.0	19.27	68.00	3,827.9	393.3	973.4	1,049.9	0.00	0.00	
4,100.0	19.27	68.00	3,922.3	405.7	1,004.0	1,082.9	0.00	0.00	
4,200.0	19.27	68.00	4,016.7	418.1	1,034.6	1,115.9	0.00	0.00	
4,300.0	19.27	68.00	4,111.1	430.4	1,065.2	1,148.9	0.00	0.00	
4,400.0	19.27	68.00	4,205.5	442.8	1,095.8	1,181.9	0.00	0.00	
4,500.0	19.27	68.00	4,299.9	455.1	1,126.4	1,214.9	0.00	0.00	
4,600.0	19.27	68.00	4,394.3	467.5	1,157.0	1,247.8	0.00	0.00	
4,700.0	19.27	68.00	4,488.7	479.9	1,187.6	1,280.8	0.00	0.00	
4,800.0	19.27	68.00	4,583.1	492.2	1,218.1	1,313.8	0.00	0.00	
4,900.0	19.27	68.00	4,677.5	504.6	1,248.7	1,346.8	0.00	0.00	

## Planning Report

<b>Database:</b>	USA EDM 5000 Multi Users DB	<b>Local Co-ordinate Reference:</b>	Well WF06A-14 H15 596
<b>Company:</b>	EnCana Oil & Gas (USA) Inc	<b>TVD Reference:</b>	WELL @ 6452.0ft (Original Well Elev)
<b>Project:</b>	North Piceance	<b>MD Reference:</b>	WELL @ 6452.0ft (Original Well Elev)
<b>Site:</b>	H15 596 (S15-T5S-R96W)	<b>North Reference:</b>	True
<b>Well:</b>	WF06A-14 H15 596	<b>Survey Calculation Method:</b>	Minimum Curvature
<b>Wellbore:</b>	DD		
<b>Design:</b>	Plan #1		

Planned Survey									
Measured Depth (ft)	Inclination (°)	Azimuth (°)	Vertical Depth (ft)	+N/-S (ft)	+E/-W (ft)	Vertical Section (ft)	Dogleg Rate (°/100ft)	Build Rate (°/100ft)	Comments / Formations
5,000.0	19.27	68.00	4,771.9	517.0	1,279.3	1,379.8	0.00	0.00	
5,100.0	19.27	68.00	4,866.3	529.3	1,309.9	1,412.8	0.00	0.00	
5,200.0	19.27	68.00	4,960.7	541.7	1,340.5	1,445.8	0.00	0.00	
5,300.0	19.27	68.00	5,055.1	554.0	1,371.1	1,478.8	0.00	0.00	
5,331.5	19.27	68.00	5,084.8	557.9	1,380.7	1,489.2	0.00	0.00	Start Drop -3.00
5,400.0	17.21	68.00	5,149.9	566.0	1,400.6	1,510.6	3.00	-3.00	
5,500.0	14.21	68.00	5,246.2	576.1	1,425.7	1,537.7	3.00	-3.00	
5,600.0	11.21	68.00	5,343.7	584.3	1,446.1	1,559.7	3.00	-3.00	
5,700.0	8.21	68.00	5,442.3	590.7	1,461.8	1,576.6	3.00	-3.00	
5,800.0	5.21	68.00	5,541.6	595.0	1,472.6	1,588.3	3.00	-3.00	
5,900.0	2.21	68.00	5,641.3	597.5	1,478.6	1,594.7	3.00	-3.00	
5,973.7	0.00	0.00	5,715.0	598.0	1,479.9	1,596.1	3.00	-3.00	EOD; Inc=0° - Top of Gas (TVD) - H15 596 WFL
6,000.0	0.07	236.34	5,741.3	598.0	1,479.9	1,596.1	0.25	0.25	
6,003.7	0.07	236.34	5,745.0	598.0	1,479.9	1,596.1	0.25	0.25	Williams Fork (TVD)
6,095.4	0.30	236.34	5,836.7	597.8	1,479.6	1,595.8	0.25	0.25	
6,100.0	0.30	236.34	5,841.3	597.8	1,479.6	1,595.8	0.00	0.00	
6,200.0	0.30	236.34	5,941.3	597.5	1,479.2	1,595.3	0.00	0.00	
6,300.0	0.30	236.34	6,041.3	597.2	1,478.7	1,594.8	0.00	0.00	
6,400.0	0.30	236.34	6,141.3	596.9	1,478.3	1,594.3	0.00	0.00	
6,500.0	0.30	236.34	6,241.3	596.6	1,477.8	1,593.7	0.00	0.00	
6,600.0	0.30	236.34	6,341.3	596.3	1,477.4	1,593.2	0.00	0.00	
6,700.0	0.30	236.34	6,441.3	596.0	1,477.0	1,592.7	0.00	0.00	
6,800.0	0.30	236.34	6,541.3	595.7	1,476.5	1,592.2	0.00	0.00	
6,900.0	0.30	236.34	6,641.3	595.5	1,476.1	1,591.7	0.00	0.00	
7,000.0	0.30	236.34	6,741.3	595.2	1,475.6	1,591.1	0.00	0.00	
7,100.0	0.30	236.34	6,841.3	594.9	1,475.2	1,590.6	0.00	0.00	
7,200.0	0.30	236.34	6,941.3	594.6	1,474.7	1,590.1	0.00	0.00	
7,300.0	0.30	236.34	7,041.3	594.3	1,474.3	1,589.6	0.00	0.00	
7,400.0	0.30	236.34	7,141.3	594.0	1,473.9	1,589.1	0.00	0.00	
7,500.0	0.30	236.34	7,241.3	593.7	1,473.4	1,588.5	0.00	0.00	
7,600.0	0.30	236.34	7,341.3	593.4	1,473.0	1,588.0	0.00	0.00	
7,700.0	0.30	236.34	7,441.3	593.1	1,472.5	1,587.5	0.00	0.00	
7,800.0	0.30	236.34	7,541.3	592.8	1,472.1	1,587.0	0.00	0.00	
7,900.0	0.30	236.34	7,641.3	592.5	1,471.7	1,586.5	0.00	0.00	
8,000.0	0.30	236.34	7,741.3	592.2	1,471.2	1,585.9	0.00	0.00	
8,100.0	0.30	236.34	7,841.3	591.9	1,470.8	1,585.4	0.00	0.00	
8,200.0	0.30	236.34	7,941.3	591.6	1,470.3	1,584.9	0.00	0.00	
8,300.0	0.30	236.34	8,041.3	591.3	1,469.9	1,584.4	0.00	0.00	
8,400.0	0.30	236.34	8,141.3	591.0	1,469.4	1,583.9	0.00	0.00	
8,500.0	0.30	236.34	8,241.3	590.7	1,469.0	1,583.3	0.00	0.00	
8,600.0	0.30	236.34	8,341.3	590.4	1,468.6	1,582.8	0.00	0.00	
8,700.0	0.30	236.34	8,441.3	590.2	1,468.1	1,582.3	0.00	0.00	
8,800.0	0.30	236.34	8,541.3	589.9	1,467.7	1,581.8	0.00	0.00	
8,900.0	0.30	236.34	8,641.3	589.6	1,467.2	1,581.3	0.00	0.00	
9,000.0	0.30	236.34	8,741.3	589.3	1,466.8	1,580.7	0.00	0.00	
9,100.0	0.30	236.34	8,841.3	589.0	1,466.4	1,580.2	0.00	0.00	
9,200.0	0.30	236.34	8,941.3	588.7	1,465.9	1,579.7	0.00	0.00	
9,300.0	0.30	236.34	9,041.3	588.4	1,465.5	1,579.2	0.00	0.00	
9,400.0	0.30	236.34	9,141.3	588.1	1,465.0	1,578.7	0.00	0.00	
9,423.7	0.30	236.34	9,165.0	588.0	1,464.9	1,578.5	0.00	0.00	Drillers TD @ 9423' MD - Rollins (TVD) - H15 5
9,500.0	0.30	236.34	9,241.3	587.8	1,464.6	1,578.1	0.00	0.00	
9,600.0	0.30	236.34	9,341.3	587.5	1,464.1	1,577.6	0.00	0.00	

Planning Report

<b>Database:</b>	USA EDM 5000 Multi Users DB	<b>Local Co-ordinate Reference:</b>	Well WF06A-14 H15 596
<b>Company:</b>	EnCana Oil & Gas (USA) Inc	<b>TVD Reference:</b>	WELL @ 6452.0ft (Original Well Elev)
<b>Project:</b>	North Piceance	<b>MD Reference:</b>	WELL @ 6452.0ft (Original Well Elev)
<b>Site:</b>	H15 596 (S15-T5S-R96W)	<b>North Reference:</b>	True
<b>Well:</b>	WF06A-14 H15 596	<b>Survey Calculation Method:</b>	Minimum Curvature
<b>Wellbore:</b>	DD		
<b>Design:</b>	Plan #1		

Planned Survey									
Measured Depth (ft)	Inclination (°)	Azimuth (°)	Vertical Depth (ft)	+N/-S (ft)	+E/-W (ft)	Vertical Section (ft)	Dogleg Rate (°/100ft)	Build Rate (°/100ft)	Comments / Formations
9,700.0	0.30	236.34	9,441.3	587.2	1,463.7	1,577.1	0.00	0.00	
9,800.0	0.30	236.34	9,541.3	586.9	1,463.3	1,576.6	0.00	0.00	
9,900.0	0.30	236.34	9,641.3	586.6	1,462.8	1,576.1	0.00	0.00	
10,000.0	0.30	236.34	9,741.3	586.3	1,462.4	1,575.5	0.00	0.00	
10,100.0	0.30	236.34	9,841.3	586.0	1,461.9	1,575.0	0.00	0.00	
10,200.0	0.30	236.34	9,941.3	585.7	1,461.5	1,574.5	0.00	0.00	
10,300.0	0.30	236.34	10,041.3	585.4	1,461.1	1,574.0	0.00	0.00	
10,400.0	0.30	236.34	10,141.3	585.2	1,460.6	1,573.5	0.00	0.00	
10,500.0	0.30	236.34	10,241.3	584.9	1,460.2	1,572.9	0.00	0.00	
10,600.0	0.30	236.34	10,341.3	584.6	1,459.7	1,572.4	0.00	0.00	
10,623.7	0.30	236.34	10,365.0	584.5	1,459.6	1,572.3	0.00	0.00	Permit TD @ 10623' MD

Targets									
Target Name	Dip Angle (°)	Dip Dir. (°)	TVD (ft)	+N/-S (ft)	+E/-W (ft)	Northing (ft)	Easting (ft)	Latitude	Longitude
H15 596 WF06A-14 TG <sup>1</sup> - hit/miss target - Shape - plan hits target center - Point	0.00	0.00	5,715.0	598.0	1,479.9	1,660,940.01	2,256,027.10	39.618372	-108.141307
H15 596 WF06A-14 PB <sup>1</sup> - plan hits target center - Rectangle (sides W30.0 H50.0 D0.0)	0.00	0.00	9,165.0	588.0	1,464.9	1,660,930.48	2,256,011.83	39.618345	-108.141361

Formations					
Measured Depth (ft)	Vertical Depth (ft)	Name	Lithology	Dip (°)	Dip Direction (°)
3,685.5	3,531.0	Wasatch G (TVD)			
5,973.7	5,715.0	Top of Gas (TVD)			
6,003.7	5,745.0	Willaims Fork (TVD)			
9,423.7	9,165.0	Rollins (TVD)			

Plan Annotations				
Measured Depth (ft)	Vertical Depth (ft)	+N/-S (ft)	+E/-W (ft)	Comment
500.0	500.0	0.0	0.0	KOP @ 500'
1,142.2	1,130.2	40.1	99.2	EOB; Inc=19.27°
5,331.5	5,084.8	557.9	1,380.7	Start Drop -3.00
5,973.7	5,715.0	598.0	1,479.9	EOD; Inc=0°
9,423.7	9,165.0	597.8	1,479.6	Drillers TD @ 9423' MD
10,623.7	10,365.0	588.0	1,464.9	Permit TD @ 10623' MD