

LEGEND:

 **PROPOSED LOCATION**



Encana OIL & GAS (USA) INC.

WELL PAD C19 397

SECTION 19, T3S, R97W, 6th P.M.

NE 1/4 NW 1/4

SHEET 7 OF 10



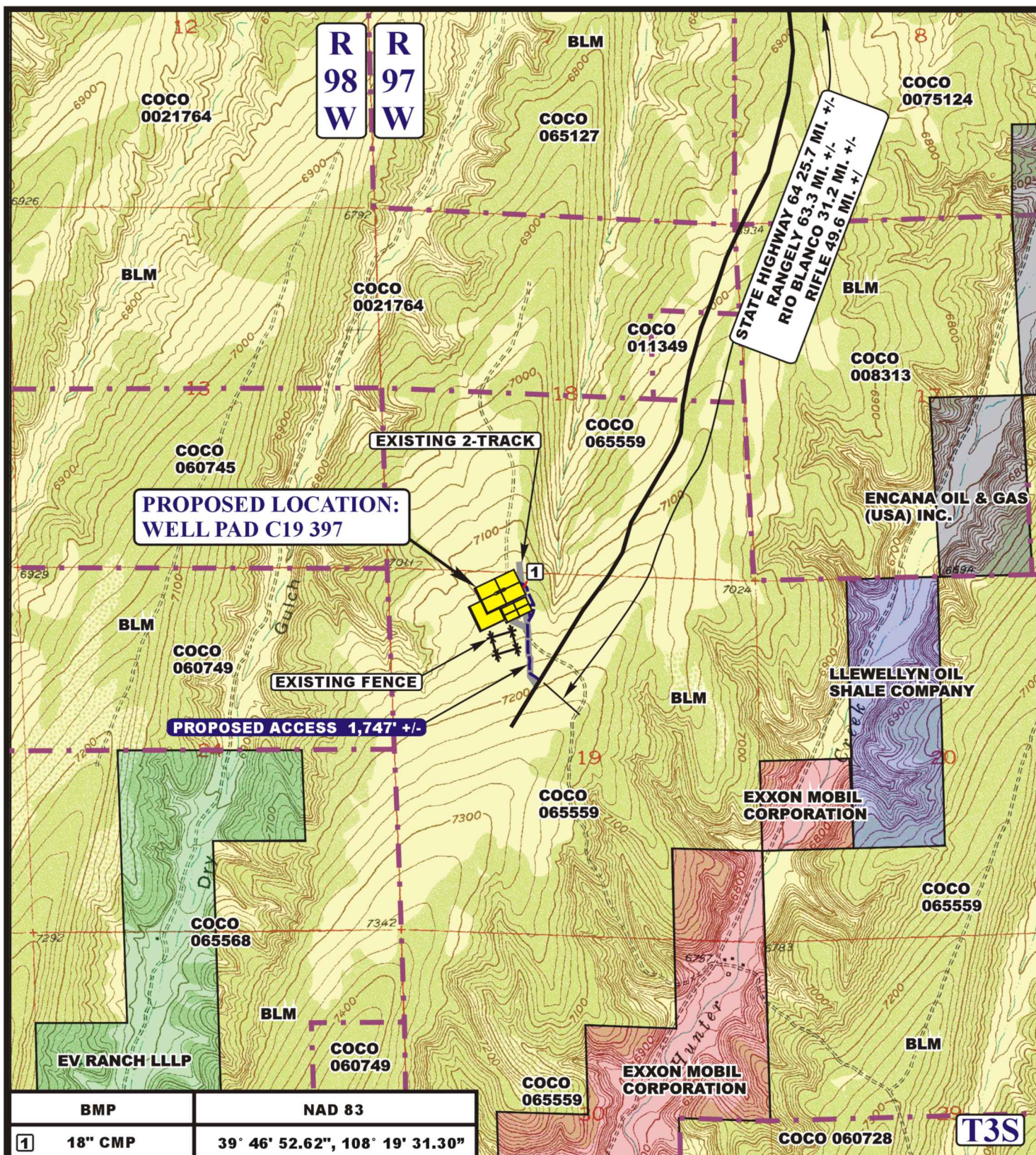
Uintah Engineering & Land Surveying
85 South 200 East Vernal, Utah 84078
(435) 789-1017 * FAX (435) 789-1813

**ACCESS ROAD
MAP**

10 15 12
MONTH DAY YEAR

SCALE: 1:100,000 DRAWN BY: J.L.G. REVISED: 06-10-13





LEGEND:

	EXISTING ROAD
	PROPOSED ACCESS ROAD
	EXISTING 2-TRACK NEEDS UPGRADED
	EXISTING FENCE



Uintah Engineering & Land Surveying
85 South 200 East Vernal, Utah 84078
(435) 789-1017 * FAX (435) 789-1813



Encana OIL & GAS (USA) INC.

WELL PAD C19 397
SECTION 19, T3S, R97W, 6th P.M.
NE 1/4 NW 1/4

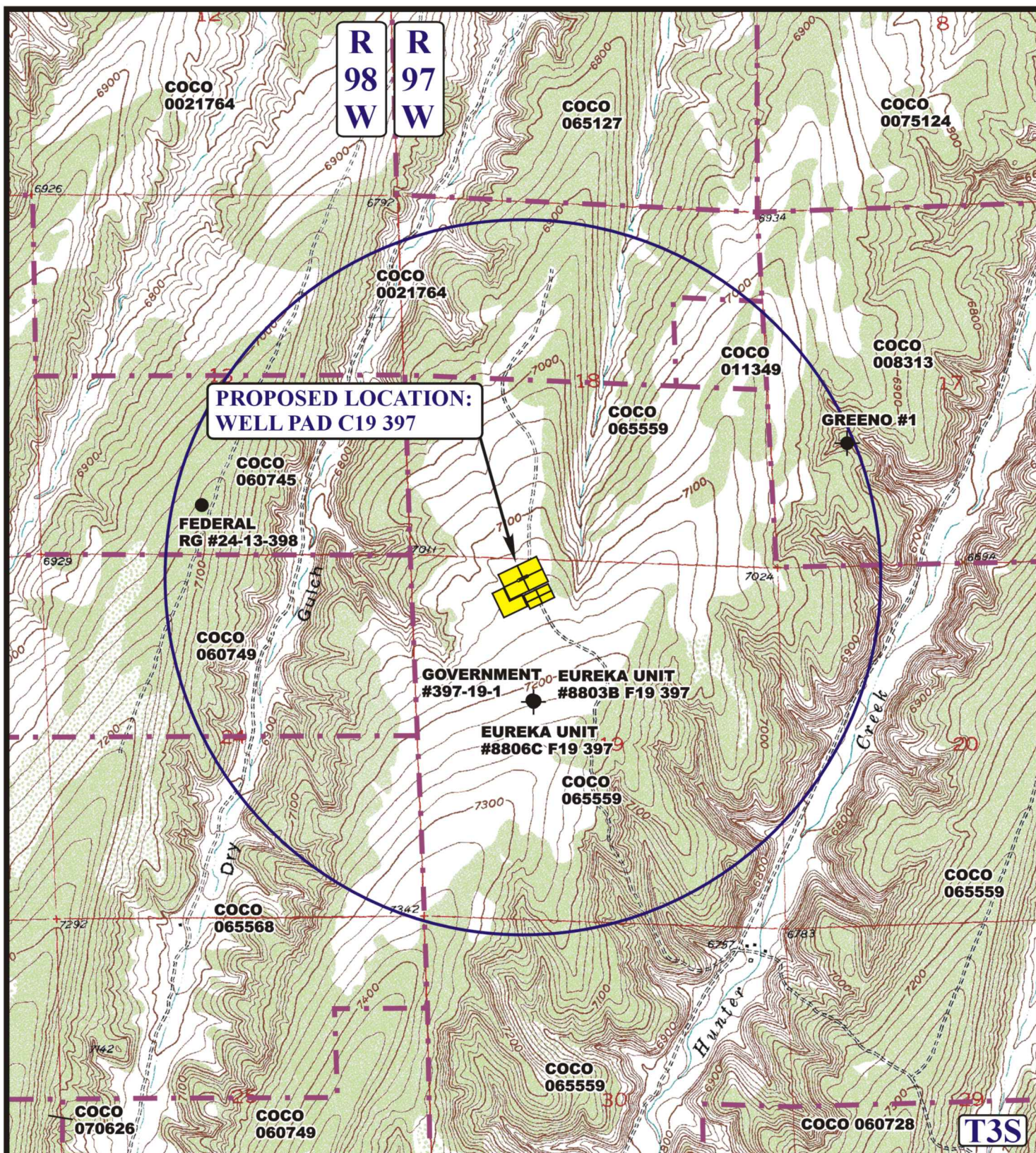
SHEET 8 OF 10

**TOPOGRAPHIC
MAP**

12 03 12
MONTH DAY YEAR

SCALE: 1" = 2000' DRAWN BY: J.L.G. REVISED: 06-10-13

**B
TOPO**



LEGEND:

- DISPOSAL WELLS
- PRODUCING WELLS
- SHUT IN WELLS
- ABANDONED WELLS
- TEMPORARILY ABANDONED



Encana OIL & GAS (USA) INC.

WELL PAD C19 397

SECTION 19, T3S, R97W, 6th P.M.

NE 1/4 NW 1/4

SHEET 9 OF 10



Uintah Engineering & Land Surveying
 85 South 200 East Vernal, Utah 84078
 (435) 789-1017 * FAX (435) 789-1813

TOPOGRAPHIC
MAP

10 **15** **12**
 MONTH DAY YEAR

SCALE: 1" = 2000' DRAWN BY: J.L.G. REVISED: 06-10-13

