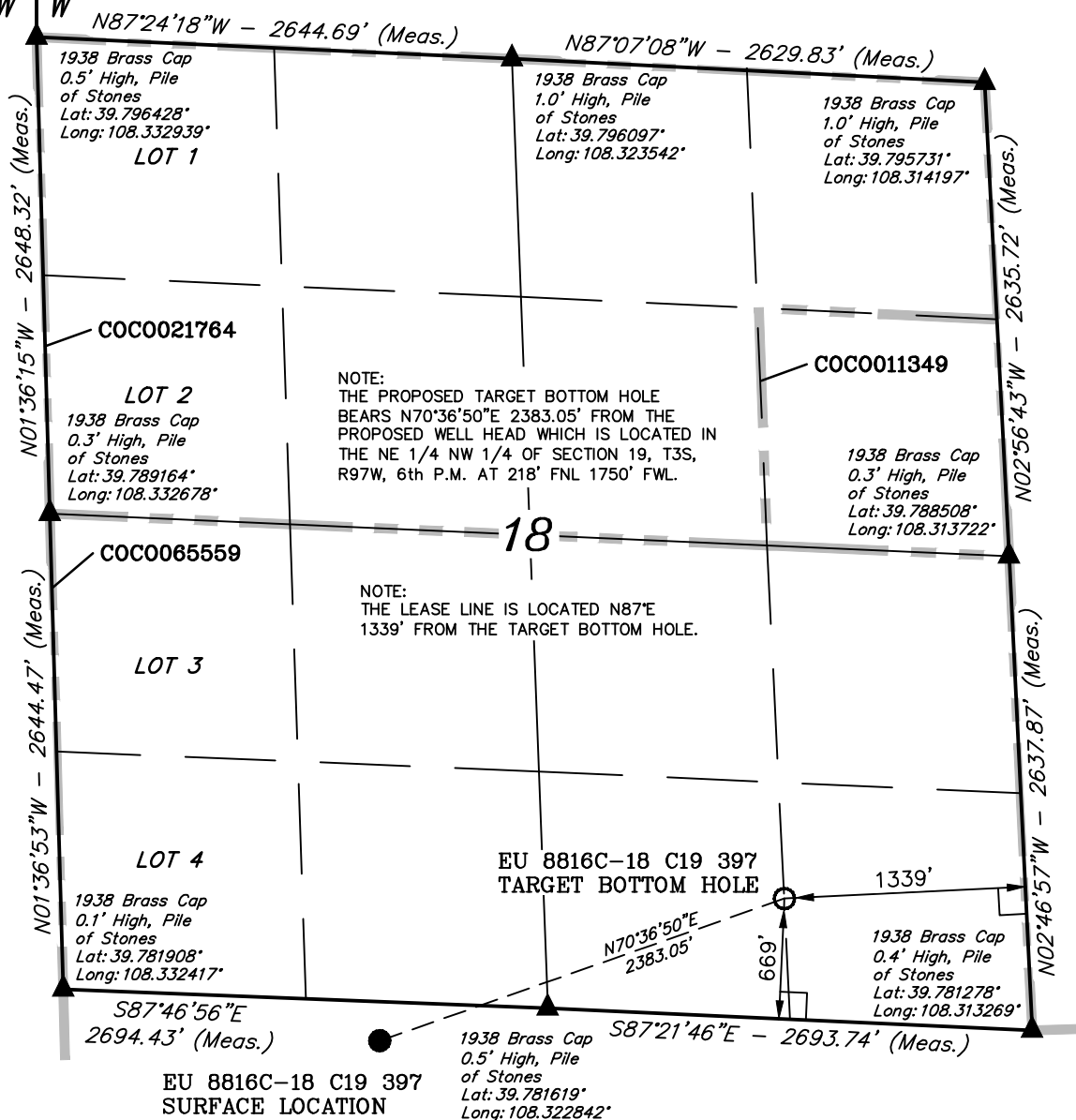




R  
98  
W

R  
97  
W

T3S, R97W, 6th P.M.



Encana OIL & GAS (USA) INC.

Well location, EU 8816C-18 C19 397 (TARGET  
BOTTOM HOLE), located as shown in the SE 1/4  
SE 1/4 of Section 18, T3S, R97W, 6th P.M., Rio  
Blanco County, Colorado.

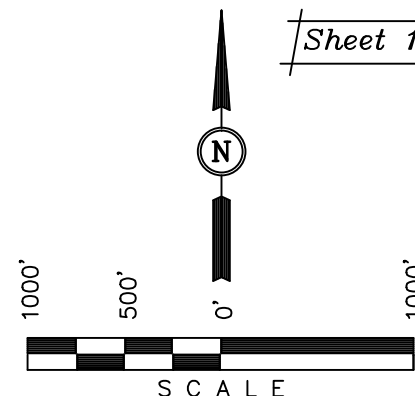
### BASIS OF ELEVATION

BENCH MARK (H79) LOCATED IN THE NE 1/4 OF SECTION  
35, T4S, R98W, 6th P.M. TAKEN FROM THE BULL FORK  
QUADRANGLE, COLORADO, 7.5 MINUTE SERIES (TOPO  
GRAPHICAL MAP) PUBLISHED BY THE UNITED STATES  
DEPARTMENT OF THE INTERIOR, GEOLOGICAL SURVEY.  
SAID ELEVATION IS MARKED AS BEING 8535 FEET.

### BASIS OF BEARINGS

BASIS OF BEARINGS IS A G.P.S. OBSERVATION.

Sheet 1ppp of 10



### CERTIFICATE

THIS IS TO CERTIFY THAT THE ABOVE PLAT WAS PREPARED AND  
LOCATION AS SHOWN WAS STAKED ON THE GROUND FROM FIELD  
NOTES OF ACTUAL SURVEYS MADE BY ME OR UNDER MY  
SUPERVISION AND THAT THE SAME ARE TRUE AND CORRECT TO  
THE BEST OF MY KNOWLEDGE AND BELIEF.

REGISTERED LAND SURVEYOR  
REGISTRATION NO. 17492  
STATE OF COLORADO  
06-10-13

**UINTAH ENGINEERING & LAND SURVEYING**  
**85 SOUTH 200 EAST - VERNAL, UTAH 84078**  
**(435) 789-1017**

### LEGEND:

- └─┘ = 90° SYMBOL
- = PROPOSED WELL HEAD.
- ▲ = SECTION CORNERS LOCATED.

<b>NAD 83 (TARGET BOTTOM HOLE)</b>
LATITUDE = 39°46'59.84" (39.783289)
LONGITUDE = 108°19'05.40" (108.318167)
<b>NAD 27 (TARGET BOTTOM HOLE)</b>
LATITUDE = 39°46'59.94" (39.783317)
LONGITUDE = 108°19'03.08" (108.317522)

SCALE 1" = 1000'	DATE SURVEYED: 04-26-13	DATE DRAWN: 06-03-13
PARTY B.J. B.B. T.B.	REFERENCES G.L.O. PLAT	
WEATHER HOT	FILE Encana OIL & GAS (USA) INC.	