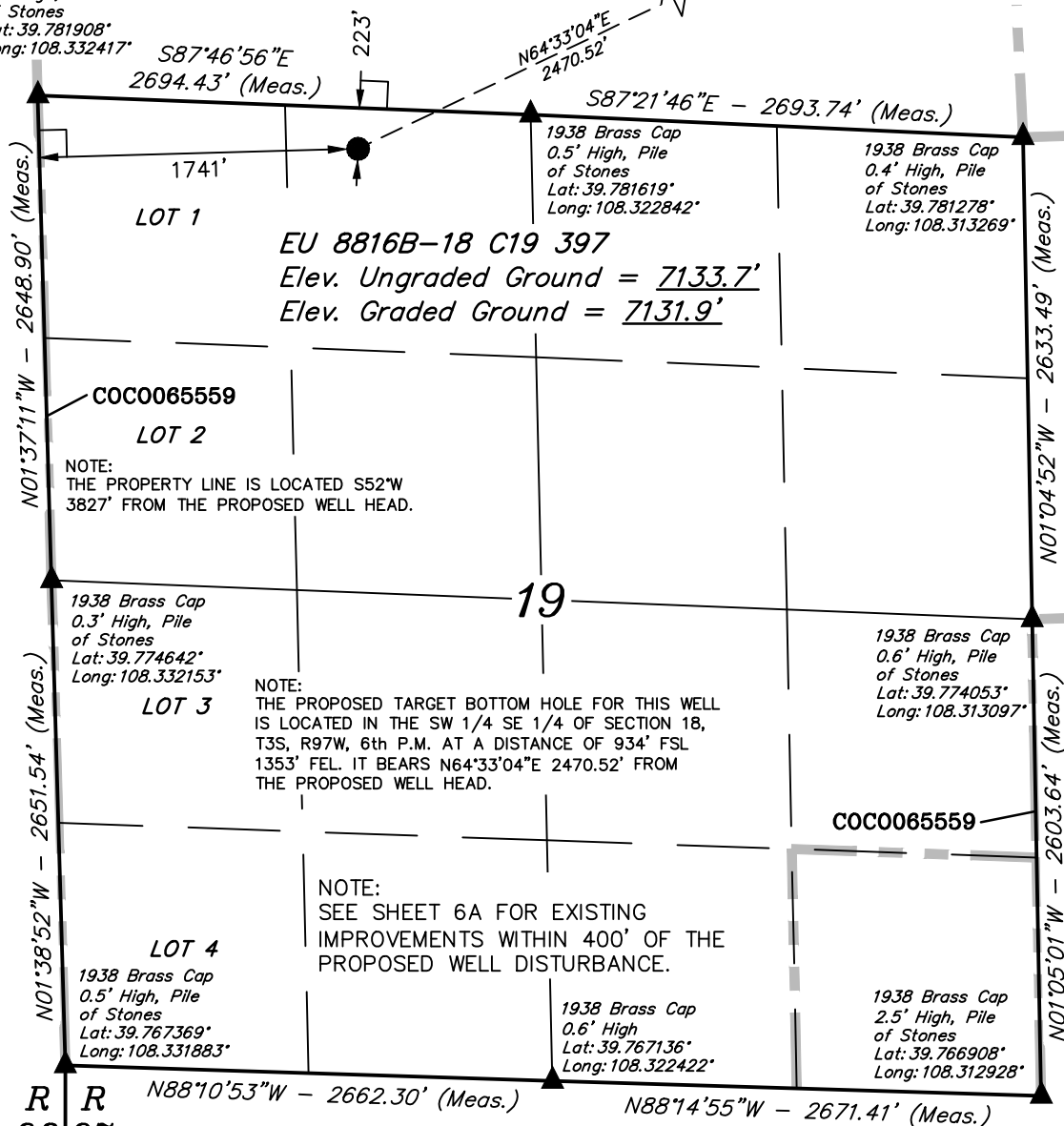


T3S, R97W, 6th P.M.

1938 Brass Cap
0.1' High, Pile
of Stones
Lat: 39.781908°
Long: 108.332417°

EU 8816B-18 C19 397
TARGET BOTTOM HOLE



Encana OIL & GAS (USA) INC.

Well location, EU 8816B-18 C19 397 (SURFACE
LOCATION), located as shown in the NE 1/4 NW
1/4 of Section 19, T3S, R97W, 6th P.M., Rio
Blanco County, Colorado.

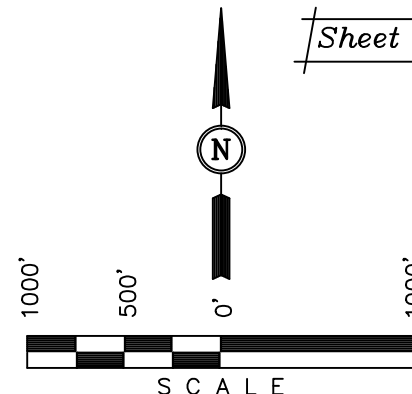
BASIS OF ELEVATION

BENCH MARK (H79) LOCATED IN THE NE 1/4 OF SECTION
35, T4S, R98W, 6th P.M. TAKEN FROM THE BULL FORK
QUADRANGLE, COLORADO, 7.5 MINUTE SERIES (TOPO
GRAPHICAL MAP) PUBLISHED BY THE UNITED STATES
DEPARTMENT OF THE INTERIOR, GEOLOGICAL SURVEY.
SAID ELEVATION IS MARKED AS BEING 8535 FEET.

BASIS OF BEARINGS

BASIS OF BEARINGS IS A G.P.S. OBSERVATION.

Sheet 1mm of 10



CERTIFICATE

THIS IS TO CERTIFY THAT THE ABOVE PLAT WAS PREPARED AND
LOCATION AS SHOWN WAS STAKED ON THE GROUND FROM FIELD
NOTES OF ACTUAL SURVEYS MADE BY ME OR UNDER MY
SUPERVISION AND THAT THE SAME ARE TRUE AND CORRECT TO
THE BEST OF MY KNOWLEDGE AND BELIEF.

REGISTERED LAND SURVEYOR
REGISTRATION NO. 17492
STATE OF COLORADO
06-10-13

UINTAH ENGINEERING & LAND SURVEYING
85 SOUTH 200 EAST - VERNAL, UTAH 84078
(435) 789-1017

R
98
W

LEGEND:

- └─ = 90° SYMBOL
- = PROPOSED WELL HEAD.
- ▲ = SECTION CORNERS LOCATED.

PDOP = 2.4

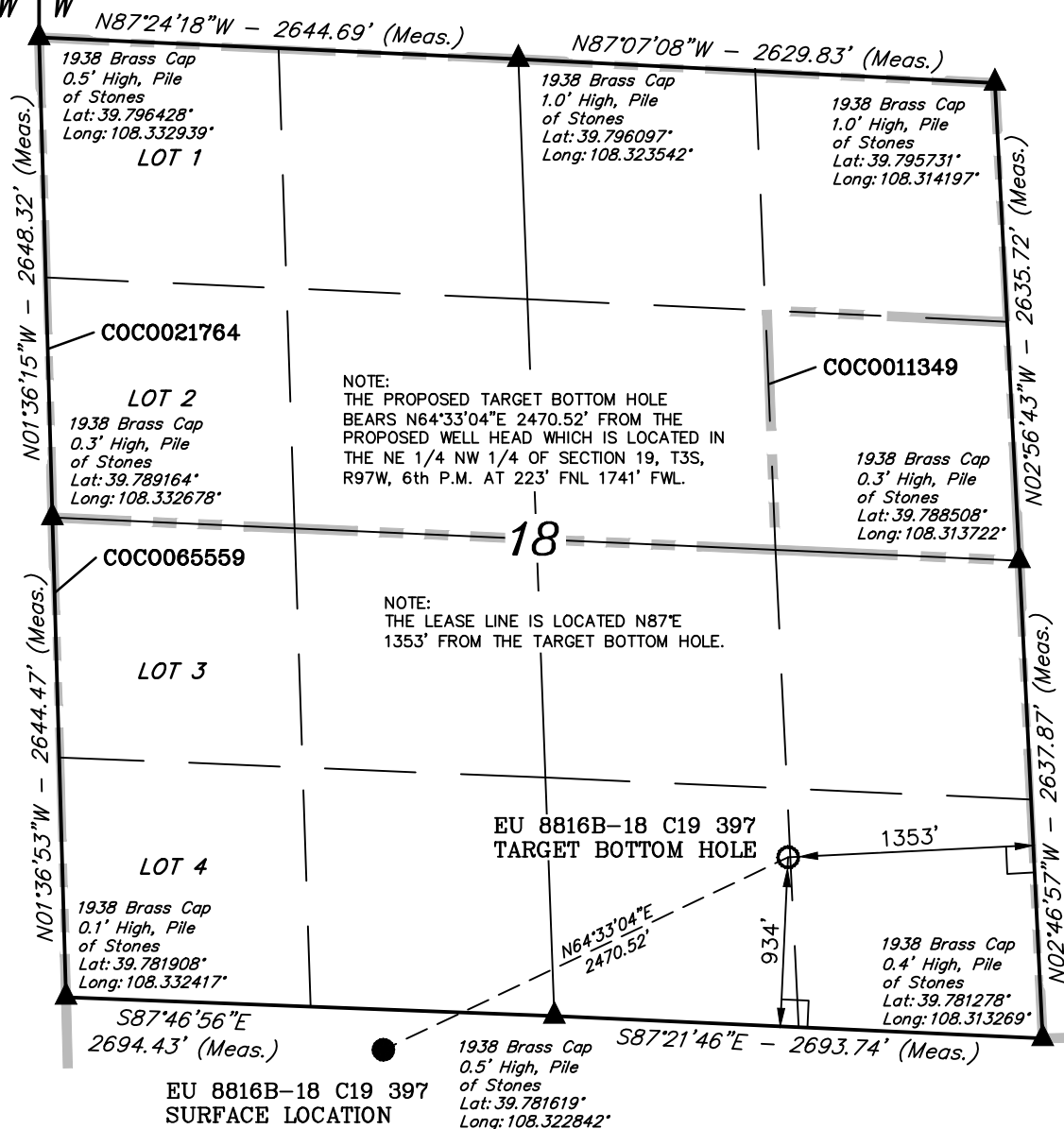
NAD 83 (SURFACE LOCATION)
LATITUDE = 39°46'52.00" (39.781111)
LONGITUDE = 108°19'34.30" (108.326194)
NAD 27 (SURFACE LOCATION)
LATITUDE = 39°46'52.09" (39.781136)
LONGITUDE = 108°19'31.98" (108.325550)

SCALE 1" = 1000'	DATE SURVEYED: 04-26-13	DATE DRAWN: 06-03-13
PARTY B.J. B.B. T.B.	REFERENCES G.L.O. PLAT	
WEATHER HOT	FILE Encana OIL & GAS (USA) INC.	

R
98
W

R
97
W

T3S, R97W, 6th P.M.



LEGEND:

- └─┘ = 90° SYMBOL
- = PROPOSED WELL HEAD.
- ▲ = SECTION CORNERS LOCATED.

NAD 83 (TARGET BOTTOM HOLE)
LATITUDE = 39°47'02.47" (39.784019)
LONGITUDE = 108°19'05.73" (108.318258)
NAD 27 (TARGET BOTTOM HOLE)
LATITUDE = 39°47'02.57" (39.784047)
LONGITUDE = 108°19'03.41" (108.317614)

Encana OIL & GAS (USA) INC.

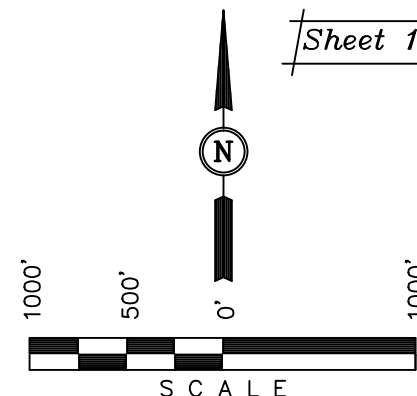
Well location, EU 8816B-18 C19 397 (TARGET BOTTOM HOLE), located as shown in the SW 1/4 SE 1/4 of Section 18, T3S, R97W, 6th P.M., Rio Blanco County, Colorado.

BASIS OF ELEVATION

BENCH MARK (H79) LOCATED IN THE NE 1/4 OF SECTION 35, T4S, R98W, 6th P.M. TAKEN FROM THE BULL FORK QUADRANGLE, COLORADO, 7.5 MINUTE SERIES (TOPO GRAPHICAL MAP) PUBLISHED BY THE UNITED STATES DEPARTMENT OF THE INTERIOR, GEOLOGICAL SURVEY. SAID ELEVATION IS MARKED AS BEING 8535 FEET.

BASIS OF BEARINGS

BASIS OF BEARINGS IS A G.P.S. OBSERVATION.



Sheet 1nnn of 10

CERTIFICATE

THIS IS TO CERTIFY THAT THE ABOVE PLAT WAS PREPARED AND LOCATION AS SHOWN WAS STAKED ON THE GROUND FROM FIELD NOTES OF ACTUAL SURVEYS MADE BY ME OR UNDER MY SUPERVISION AND THAT THE SAME ARE TRUE AND CORRECT TO THE BEST OF MY KNOWLEDGE AND BELIEF.

REGISTERED LAND SURVEYOR
REGISTRATION NO. 17492
STATE OF COLORADO
06-10-13

UINTAH ENGINEERING & LAND SURVEYING
85 SOUTH 200 EAST - VERNAL, UTAH 84078
(435) 789-1017

SCALE 1" = 1000'	DATE SURVEYED: 04-26-13	DATE DRAWN: 06-03-13
PARTY B.J. B.B. T.B.	REFERENCES G.L.O. PLAT	
WEATHER HOT	FILE Encana OIL & GAS (USA) INC.	