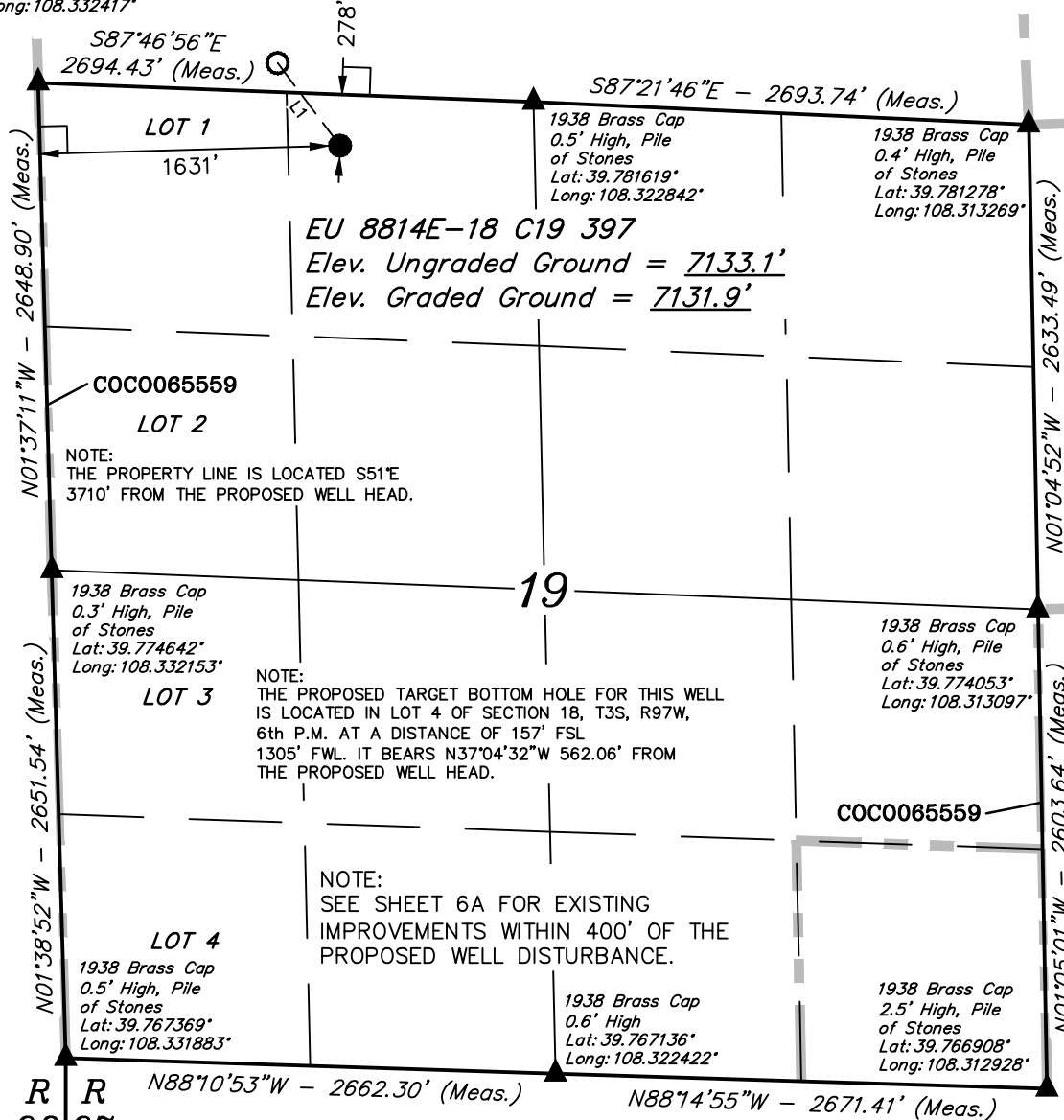


1938 Brass Cap
0.1' High, Pile
of Stones
Lat: 39.781908°
Long: 108.332417°

T3S, R97W, 6th P.M.

EU 8814E-18 C19 397
TARGET BOTTOM HOLE



R
98
W

LEGEND:

- └─ = 90° SYMBOL
- = PROPOSED WELL HEAD.
- ▲ = SECTION CORNERS LOCATED.

PDOP = 1.7

NAD 83 (SURFACE LOCATION)
LATITUDE = 39°46'51.49" (39.780969)
LONGITUDE = 108°19'35.69" (108.326581)
NAD 27 (SURFACE LOCATION)
LATITUDE = 39°46'51.59" (39.780997)
LONGITUDE = 108°19'33.37" (108.325936)

Encana OIL & GAS (USA) INC.

Well location, EU 8814E-18 C19 397 (SURFACE LOCATION), located as shown in the NE 1/4 NW 1/4 of Section 19, T3S, R97W, 6th P.M., Rio Blanco County, Colorado.

BASIS OF ELEVATION

BENCH MARK (H79) LOCATED IN THE NE 1/4 OF SECTION 35, T4S, R98W, 6th P.M. TAKEN FROM THE BULL FORK QUADRANGLE, COLORADO, 7.5 MINUTE SERIES (TOPO GRAPHICAL MAP) PUBLISHED BY THE UNITED STATES DEPARTMENT OF THE INTERIOR, GEOLOGICAL SURVEY. SAID ELEVATION IS MARKED AS BEING 8535 FEET.

BASIS OF BEARINGS

BASIS OF BEARINGS IS A G.P.S. OBSERVATION.

LINE TABLE		
LINE	DIRECTION	LENGTH
L1	N37°04'32"W	562.06'



Sheet 100 of 101



SCALE

CERTIFICATE

THIS IS TO CERTIFY THAT THE ABOVE PLAT WAS PREPARED AND LOCATION AS SHOWN WAS STAKED ON THE GROUND FROM FIELD NOTES OF ACTUAL SURVEYS MADE BY ME OR UNDER MY SUPERVISION AND THAT THE SAME ARE TRUE AND CORRECT TO THE BEST OF MY KNOWLEDGE AND BELIEF.

REGISTERED LAND SURVEYOR
REGISTRATION NO. 17492
STATE OF COLORADO
06-10-13

UINTAH ENGINEERING & LAND SURVEYING
85 SOUTH 200 EAST - VERNAL, UTAH 84078
(435) 789-1017

SCALE 1" = 1000'	DATE SURVEYED: 04-26-13	DATE DRAWN: 06-03-13
PARTY B.J. B.B. T.B.	REFERENCES G.L.O. PLAT	
WEATHER HOT	FILE Encana OIL & GAS (USA) INC.	

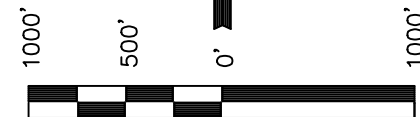
Well location, EU 8814E-18 C19 397 (TARGET BOTTOM HOLE), located as shown in LOT 4 of Section 18, T3S, R97W, 6th P.M., Rio Blanco County, Colorado.

BENCH MARK (H79) LOCATED IN THE NE 1/4 OF SECTION 35, T4S, R98W, 6th P.M. TAKEN FROM THE BULL FORK QUADRANGLE, COLORADO, 7.5 MINUTE SERIES (TOPO GRAPHICAL MAP) PUBLISHED BY THE UNITED STATES DEPARTMENT OF THE INTERIOR, GEOLOGICAL SURVEY. SAID ELEVATION IS MARKED AS BEING 8535 FEET.

BASIS OF BEARINGS IS A G.P.S. OBSERVATION.

Sheet 1pp of 10

LINE TABLE		
LINE	DIRECTION	LENGTH
L1	N37°04'32"W	562.06'



SCALE

CERTIFICATE

THIS IS TO CERTIFY THAT THE ABOVE PLOT WAS PREPARED AND
LOCATION AS SHOWN WAS STAKED ON THE GROUND FROM FIELD
NOTES OF ACTUAL SURVEYS MADE BY ME OR UNDER MY
SUPERVISION AND THAT THE SAME ARE TRUE AND CORRECT
TO THE BEST OF MY KNOWLEDGE AND BELIEF.

REGISTERED LAND SURVEYOR
REGISTRATION NO. 17492
STATE OF COLORADO
06-10-13

UTAH ENGINEERING & LAND SURVEYING
 85 SOUTH 200 EAST - VERNAL, UTAH 84078
 (435) 789-1017

SCALE 1" = 1000'	DATE SURVEYED: 04-26-13	DATE DRAWN: 06-03-13
PARTY B.J. B.B. T.B.	REFERENCES G.L.O. PLAT	
WEATHER HOT	FILE Encana OIL & GAS (USA) INC.	

N87°24'18"W - 2644.69' (Meas.)

N87°07'08"W - 2629.83' (Meas.)

1938 Brass Cap
0.5' High, Pile
of Stones
Lat: 39.796428°
Long: 108.332939°

1938 Brass Cap
1.0' High, Pile
of Stones
Lat: 39.796097°
Long: 108.323542°

1938 Brass Cap
1.0' High, Pile
of Stones
Lat: 39.795731°
Long: 108.314197°

- COC0021764

LOT 2

1938 Brass Cap
0.3' High, Pile
of Stones
Lat: 39.789164°
Long: 108.332678°

- COC0011349

1938 Brass Cap
0.3' High, Pile
of Stones
Lat: 39.788508°
Long: 108.313722°

LOT 3

COC0065559

NOTE:
THE PROPOSED TARGET BOTTOM HOLE
BEARS N37°04'32"W 562.06' FROM THE
PROPOSED WELL HEAD WHICH IS LOCATED IN
THE NE 1/4 NW 1/4 OF SECTION 19, T3S,
R97W, 6th P.M. AT 278' FNL 1631' FWL.

NOTE:
THE LEASE LINE IS LOCATED S88°E
1305' FROM THE TARGET BOTTOM HOLE.

LOT 4

EU 8814E-18 C19 397
TARGET BOTTOM HOLE

1938 Brass Cap
0.5' High, Pile
of Stones
Lat: 39.781619°
Long: 108.322842°

587°21'46"E - 2693.74' (Meas.)

EU 8814E-18 C19 397
SURFACE LOCATION

1938 Brass Cap
0.1' High, Pile
of Stones
Lat: 39.781908°
Long: 108.332417°

S87°46'56"E []
2694.43' (Meas.)

157

LEGEND:

|| = 90° SYMBOL

● = PROPOSED WELL HEAD.

▲ = SECTION CORNERS LOCATED.

NAD 83 (TARGET BOTTOM HOLE)

LATITUDE = 39°46'55.93" (39.782203)
LONGITUDE = 108°19'40.03" (108.327786)

NAD 27 (TARGET BOTTOM HOLE)

LATITUDE = 39°46'56.02" (39.782228)
LONGITUDE = 108°19'37.71" (108.327142)