

1938 Brass Cap  
0.1' High, Pile  
of Stones  
Lat: 39.781908°  
Long: 108.332417°

S87°21'46"E - 2693.74' (Meas.)

1938 Brass Cap  
0.4' High, Pile  
of Stones  
Lat: 39.781278°  
Long: 108.313269°

**Encana OIL & GAS (USA) INC.**

---

Well location, EU 8808B-19 C19 397, located as shown in the NE 1/4 NW 1/4 of Section 19, T3S, R97W, 6th P.M., Rio Blanco County, Colorado.

BENCH MARK (H79) LOCATED IN THE NE 1/4 OF SECTION 35, T4S, R98W, 6th P.M. TAKEN FROM THE BULL FORK QUADRANGLE, COLORADO, 7.5 MINUTE SERIES (TOPO GRAPHICAL MAP) PUBLISHED BY THE UNITED STATES DEPARTMENT OF THE INTERIOR, GEOLOGICAL SURVEY. SAID ELEVATION IS MARKED AS BEING 8535 FEET.

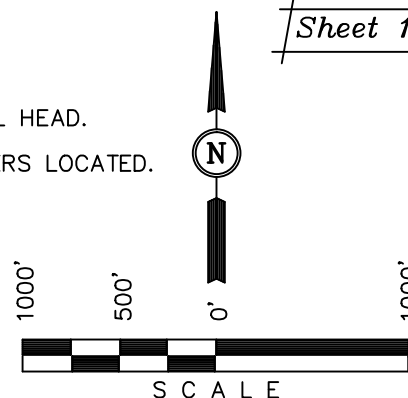
BASIS OF BEARINGS IS A G.P.S. OBSERVATION.

| = 90° SYMBOL

● = PROPOSED WELL HEAD.

▲ = SECTION CORNERS LOCATED.

Sheet 1f of 10



# CERTIFICATE

THIS IS TO CERTIFY THAT THE ABOVE PLOT WAS PREPARED, AND  
LOCATION AS SHOWN WAS STAKED ON THE GROUND FROM FIELD  
NOTES OF ACTUAL SURVEYS MADE BY ME OR UNDER MY  
SUPERVISION AND THAT THE SAME ARE TRUE AND CORRECT  
TO THE BEST OF MY KNOWLEDGE AND BELIEF.

REGISTERED LAND SURVEYOR  
REGISTRATION NO. 17492  
STATE OF COLORADO  
06-10-13

UNTAH ENGINEERING & LAND SURVEYING  
 85 SOUTH 200 EAST - VERNAL, UTAH 84078  
 (435) 789-1017

PDOP = 1.7

<b>NAD 83 (TARGET BOTTOM HOLE)</b>	<b>NAD 83 (SURFACE LOCATION)</b>
<b>LATITUDE = 39°46'35.92" (39.776644)</b>	<b>LATITUDE = 39°46'51.28" (39.780911)</b>
<b>LONGITUDE = 108°19'04.66" (108.317961)</b>	<b>LONGITUDE = 108°19'35.98" (108.326661)</b>
<b>NAD 27 (TARGET BOTTOM HOLE)</b>	<b>NAD 27 (SURFACE LOCATION)</b>
<b>LATITUDE = 39°46'36.01" (39.776669)</b>	<b>LATITUDE = 39°46'51.38" (39.780939)</b>
<b>LONGITUDE = 108°19'02.35" (108.317319)</b>	<b>LONGITUDE = 108°19'33.67" (108.326019)</b>

SCALE 1" = 1000'	DATE SURVEYED: 04-26-13	DATE DRAWN: 06-03-13
PARTY B.J. B.B. T.B.	REFERENCES G.L.O. PLAT	
WEATHER HOT	FILE Encana OIL & GAS (USA) INC.	