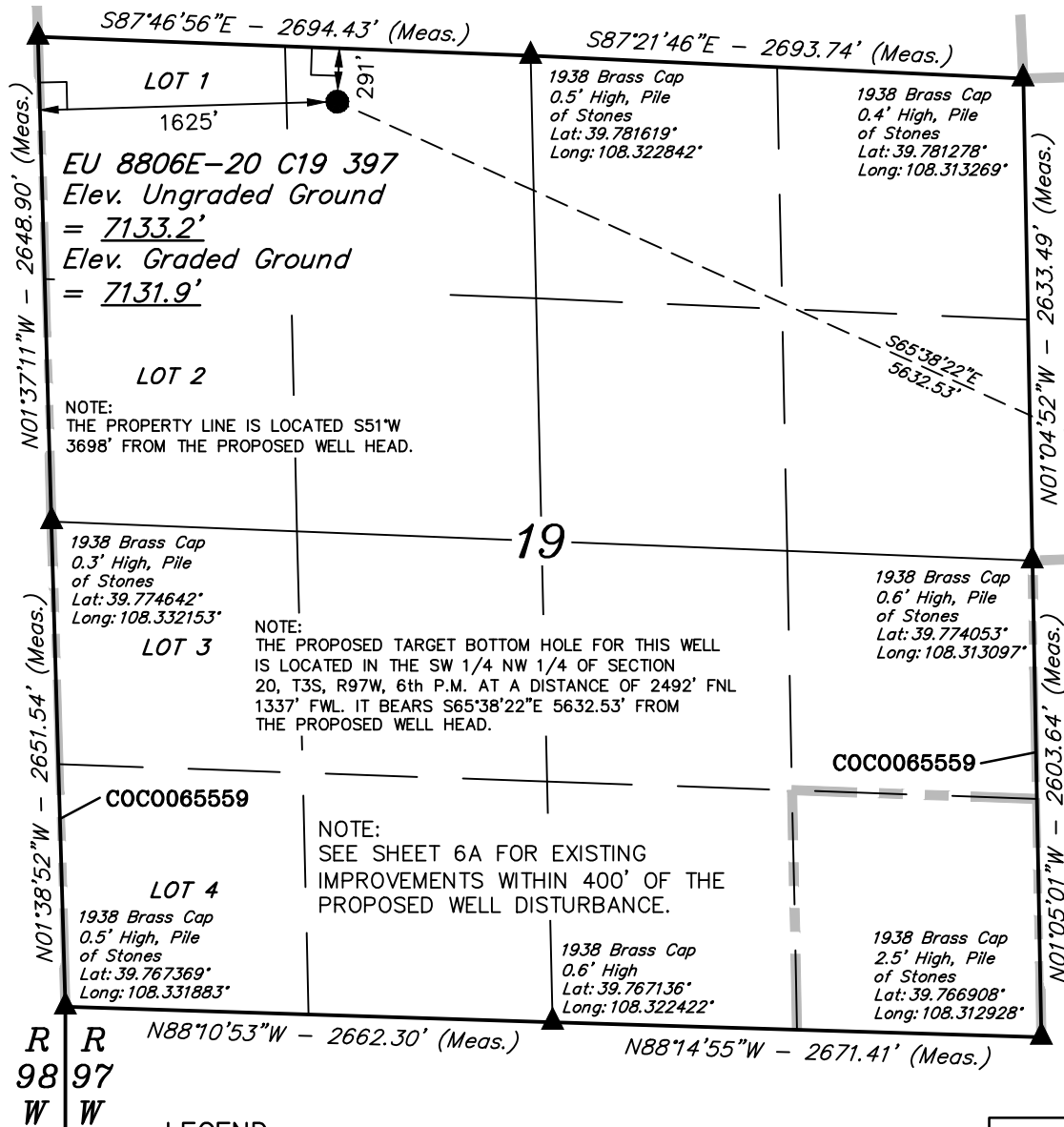


T3S, R97W, 6th P.M.

1938 Brass Cap
0.1' High, Pile
of Stones
Lat: 39.781908°
Long: 108.332417°



LEGEND:

└─┘ = 90° SYMBOL

● = PROPOSED WELL HEAD.

▲ = SECTION CORNERS LOCATED.

PDOP = 1.7

NAD 83 (SURFACE LOCATION)
LATITUDE = 39°46'51.36" (39.780933)
LONGITUDE = 108°19'35.75" (108.326597)
NAD 27 (SURFACE LOCATION)
LATITUDE = 39°46'51.46" (39.780961)
LONGITUDE = 108°19'33.44" (108.325956)

Encana OIL & GAS (USA) INC.

Well location, EU 8806E-20 C19 397 (SURFACE LOCATION), located as shown in the NE 1/4 NW 1/4 of Section 19, T3S, R97W, 6th P.M., Rio Blanco County, Colorado.

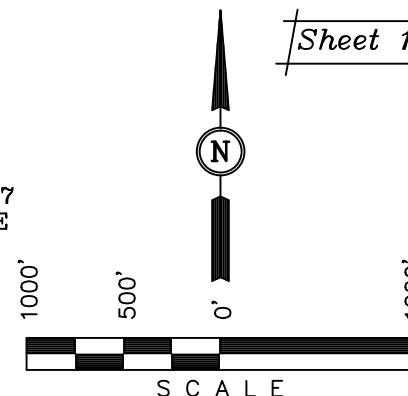
BASIS OF ELEVATION

BENCH MARK (H79) LOCATED IN THE NE 1/4 OF SECTION 35, T4S, R98W, 6th P.M. TAKEN FROM THE BULL FORK QUADRANGLE, COLORADO, 7.5 MINUTE SERIES (TOPO GRAPHICAL MAP) PUBLISHED BY THE UNITED STATES DEPARTMENT OF THE INTERIOR, GEOLOGICAL SURVEY. SAID ELEVATION IS MARKED AS BEING 8535 FEET.

BASIS OF BEARINGS

BASIS OF BEARINGS IS A G.P.S. OBSERVATION.

Sheet 1h of 10



CERTIFICATE

THIS IS TO CERTIFY THAT THE ABOVE PLAT WAS PREPARED AND LOCATION AS SHOWN WAS STAKED ON THE GROUND FROM FIELD NOTES OF ACTUAL SURVEYS MADE BY ME OR UNDER MY SUPERVISION AND THAT THE SAME ARE TRUE AND CORRECT TO THE BEST OF MY KNOWLEDGE AND BELIEF.

REGISTERED LAND SURVEYOR
REGISTRATION NO. 17492
STATE OF COLORADO
06-10-13

UINTAH ENGINEERING & LAND SURVEYING
85 SOUTH 200 EAST - VERNAL, UTAH 84078
(435) 789-1017

SCALE 1" = 1000'	DATE SURVEYED: 04-26-13	DATE DRAWN: 06-03-13
PARTY B.J. B.B. T.B.	REFERENCES G.L.O. PLAT	
WEATHER HOT	FILE Encana OIL & GAS (USA) INC.	

T3S, R97W, 6th P.M.

Encana OIL & GAS (USA) INC.

Well location, EU 8806E-20 C19 397 (TARGET BOTTOM HOLE), located as shown in the SW 1/4 NW 1/4 of Section 20, T3S, R97W, 6th P.M., Rio Blanco County, Colorado.

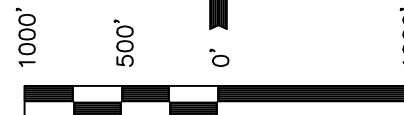
BASIS OF ELEVATION

BENCH MARK (H79) LOCATED IN THE NE 1/4 OF SECTION 35, T4S, R98W, 6th P.M. TAKEN FROM THE BULL FORK QUADRANGLE, COLORADO, 7.5 MINUTE SERIES (TOPO GRAPHICAL MAP) PUBLISHED BY THE UNITED STATES DEPARTMENT OF THE INTERIOR, GEOLOGICAL SURVEY. SAID ELEVATION IS MARKED AS BEING 8535 FEET.

BASIS OF BEARINGS

BASIS OF BEARINGS IS A G.P.S. OBSERVATION.

Sheet 1i of 10



SCALE

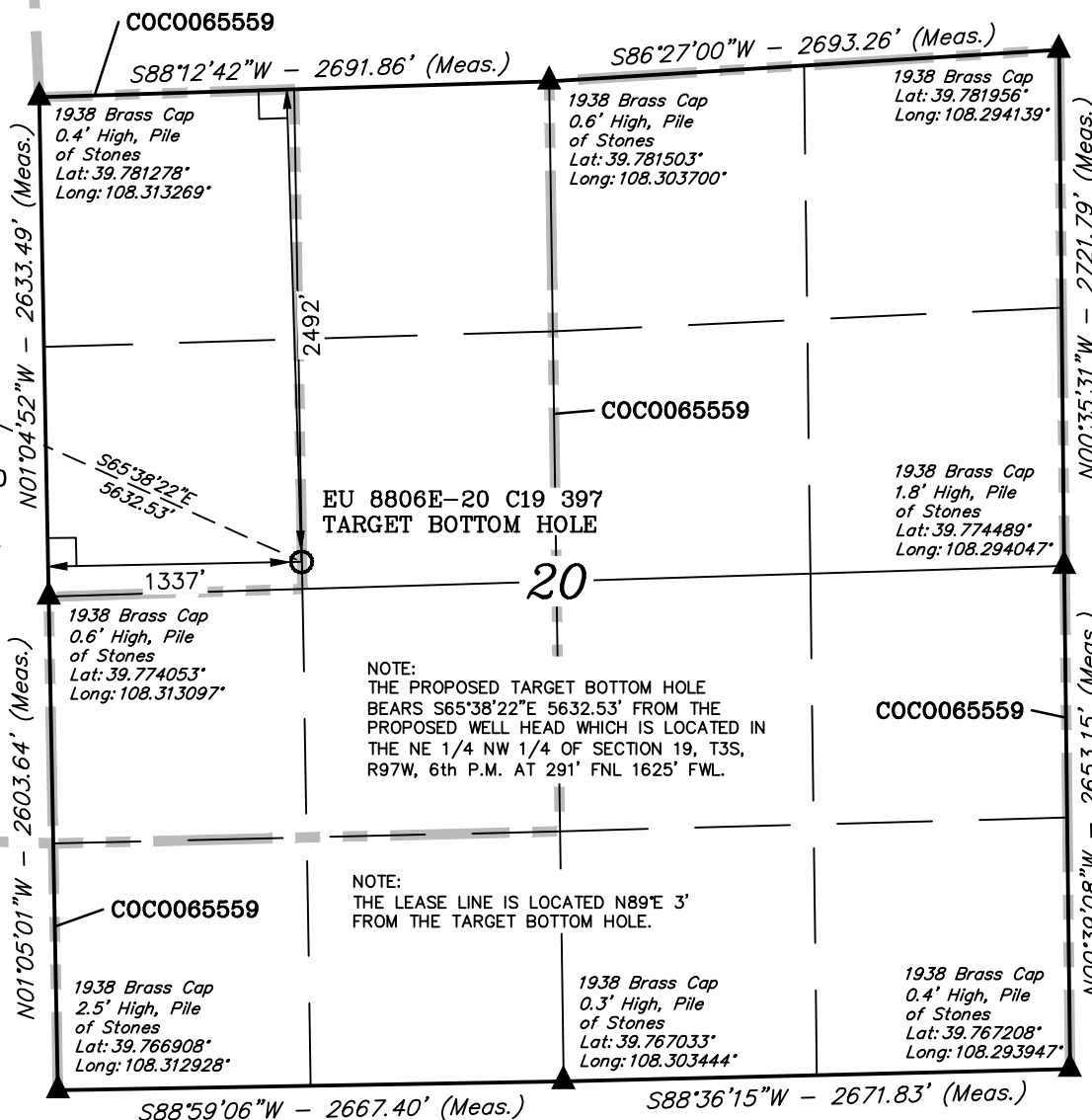
CERTIFICATE

THIS IS TO CERTIFY THAT THE ABOVE PLAT WAS PREPARED AND LOCATION AS SHOWN WAS STAKED ON THE GROUND FROM FIELD NOTES OF ACTUAL SURVEYS MADE BY ME OR UNDER MY SUPERVISION AND THAT THE SAME ARE TRUE AND CORRECT TO THE BEST OF MY KNOWLEDGE AND BELIEF.

REGISTERED LAND SURVEYOR
REGISTRATION NO. 17492
STATE OF COLORADO
06-10-13

UINTAH ENGINEERING & LAND SURVEYING
85 SOUTH 200 EAST - VERNAL, UTAH 84078
(435) 789-1017

EU
8806E-20
C19 397
SURFACE
LOCATION



LEGEND:

- └─┘ = 90° SYMBOL
- = PROPOSED WELL HEAD.
- ▲ = SECTION CORNERS LOCATED.

NAD 83 (TARGET BOTTOM HOLE)	
LATITUDE	= 39°46'28.39" (39.774553)
LONGITUDE	= 108°18'30.07" (108.308353)
NAD 27 (TARGET BOTTOM HOLE)	
LATITUDE	= 39°46'28.48" (39.774578)
LONGITUDE	= 108°18'27.76" (108.307711)

SCALE 1" = 1000'	DATE SURVEYED: 04-26-13	DATE DRAWN: 06-03-13
PARTY B.J. B.B. T.B.	REFERENCES G.L.O. PLAT	
WEATHER HOT	FILE Encana OIL & GAS (USA) INC.	