

# BONANZA CREEK OIL COMPANY

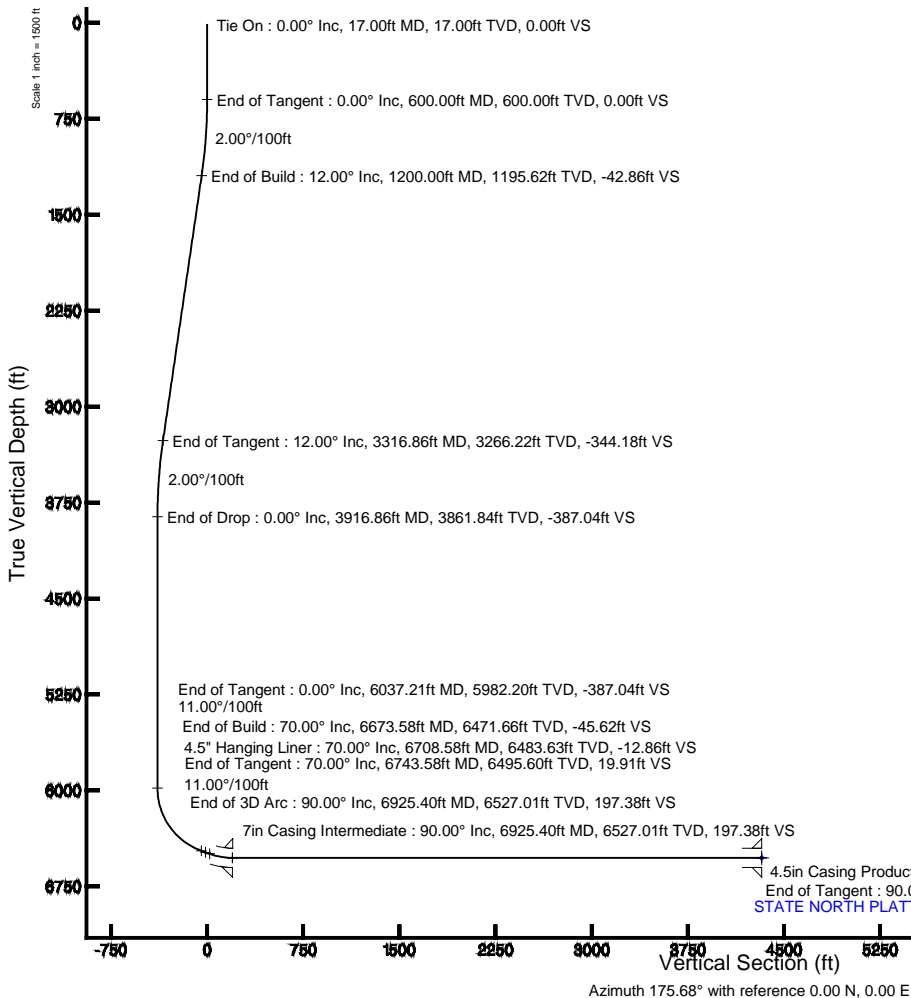
Location: COLORADO Slot: SLOT#02 STATE NORTH PLATTE F-J-26HC (437'FNL & 956'FWL,SEC.26)  
Field: WELD COUNTY Well: STATE NORTH PLATTE F-J-26HC  
Facility: SEC.26-T5N-R63W Wellbore: STATE NORTH PLATTE F-J-26HC PWB

Plot reference wellpath is STATE NORTH PLATTE F-J-26HC (REV-A.1) PWP

True vertical depths are referenced to CADE 22 (RKB) Grid System: NAD83 / Lambert Colorado SP, Northern Zone (501), US feet  
Measured depths are referenced to CADE 22 (RKB) North Reference: True north  
CADE 22 (RKB) to Mean Sea Level: 4582 feet Scale: True distance  
Mean Sea Level to Mud line (At Slot: SLOT#02 STATE NORTH PLATTE F-J-26HC (437'FNL & 956'FWL,SEC.26)): 0 feet Depths are in feet  
Coordinates are in feet referenced to Slot Created by: guenaler on 8/7/2013

## Location Information

Facility Name	Grid East (US ft)	Grid North (US ft)	Latitude	Longitude
SEC.26-T5N-R63W	3303950.838	1381774.536	40°22'34.464"N	104°24'32.436"W
Slot	Local N (ft)	Local E (ft)	Grid East (US ft)	Grid North (US ft)
SLOT#02 STATE NORTH PLATTE F-J-26HC (437'FNL & 956'FWL,SEC.26)	18.22	0.00	3303950.814	1381792.749
CADE 22 (RKB) to Mud line (At Slot: SLOT#02 STATE NORTH PLATTE F-J-26HC (437'FNL & 956'FWL,SEC.26))				4582ft
Mean Sea Level to Mud line (At Slot: SLOT#02 STATE NORTH PLATTE F-J-26HC (437'FNL & 956'FWL,SEC.26))				0ft
CADE 22 (RKB) to Mean Sea Level				4582ft



## Well Profile Data

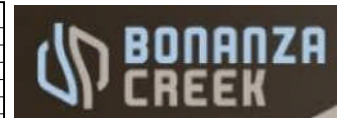
Design Comment	MD (ft)	Inc (")	Az (")	TVD (ft)	Local N (ft)	Local E (ft)	DLS ("/100ft)	VS (ft)
Tie On	17.00	0.000	42.470	17.00	0.00	0.00	0.00	0.00
End of Tangent	600.00	0.000	42.470	600.00	0.00	0.00	0.00	0.00
End of Build	1200.00	12.000	42.470	1195.62	46.18	42.27	2.00	-42.86
End of Tangent	3316.86	12.000	42.470	3266.22	370.82	339.44	0.00	-344.18
End of Drop	3916.86	0.000	180.674	3861.84	417.00	381.71	2.00	-387.04
End of Tangent	6037.21	0.000	180.674	5982.20	417.00	381.71	0.00	-387.04
End of Build	6673.58	70.000	180.674	6471.66	74.30	377.68	11.00	-45.62
End of Tangent	6743.58	70.000	180.674	6495.60	8.53	376.90	0.00	19.91
End of 3D Arc	6925.40	90.000	180.674	6527.01	-169.61	374.81	11.00	197.38
End of Tangent	11069.50	90.000	180.674	6527.00	-4313.43	326.04	0.00	4325.73

## Targets

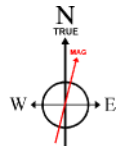
Name	MD (ft)	TVD (ft)	Local N (ft)	Local E (ft)	Grid East (US ft)	Grid North (US ft)	Latitude	Longitude
STATE NORTH PLATTE F-J-26HC SECTION 26	0.00	-18.22	0.00	0.0000000	1381774.54	40°22'34.464"N	104°24'32.436"W	
STATE NORTH PLATTE F-J-26HC HARDLINE (460' SETBACKS)	6527.00	-18.22	0.00	0.0000000	1381774.54	40°22'34.464"N	104°24'32.436"W	
STATE NORTH PLATTE F-J-26HC BHL From Plat Rev-1 (470'FSL & 1340'FWL,SEC.26)	11069.50	6527.00	-4313.43	326.04	0.0000000	1381774.54	40°22'34.464"N	
STATE NORTH PLATTE F-J-26HC TARGET T1	6527.00	94.72	381.71	0.0000000	1381774.54	40°22'34.464"N	104°24'32.436"W	
STATE F-J-26 (501' Radius)	7025.00	-271.74	2657.52	0.0000000	1381774.54	40°22'34.464"N	104°24'32.436"W	

## Survey Program

Start MD (ft)	End MD (ft)	Tool	Model	Log Name/Comment	Wellbore
17.00	11069.50	NavTrak	NavTrak (Standard)		STATE NORTH PLATTE F-J-26HC PWB

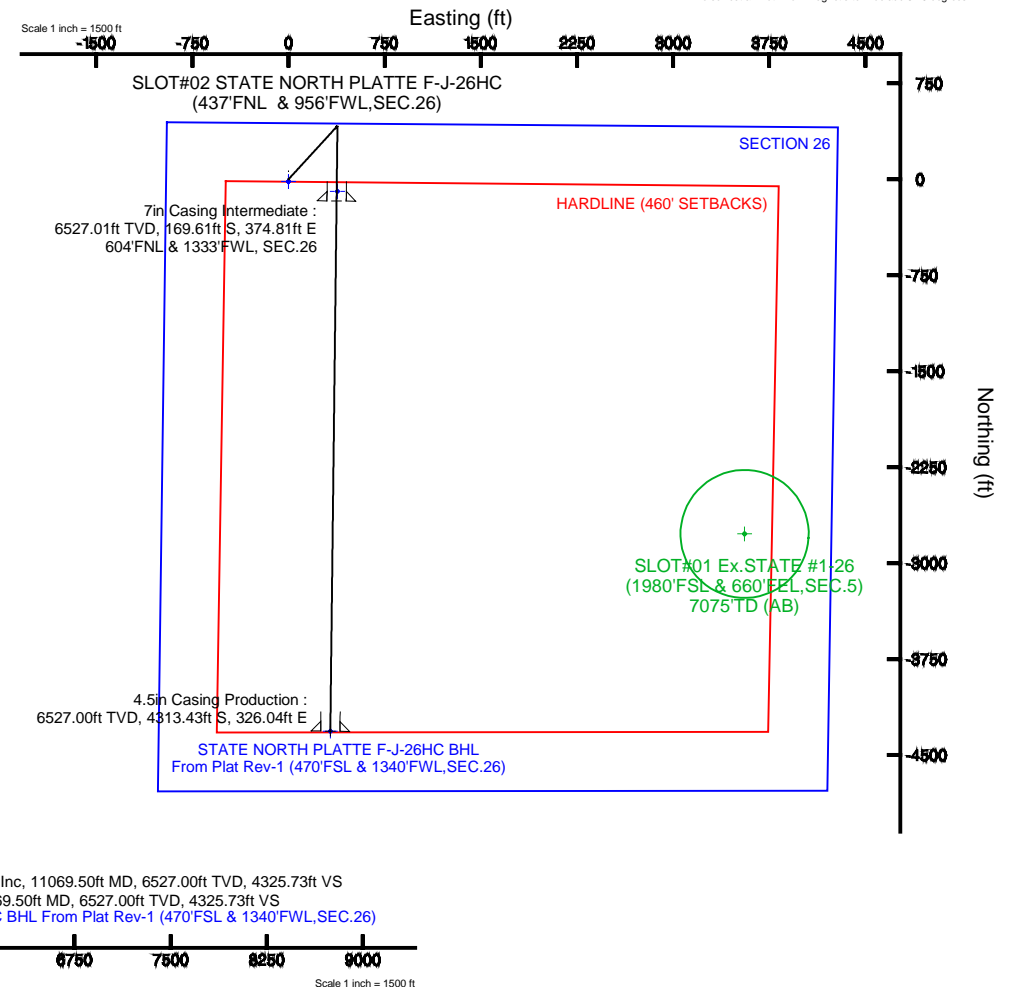


# BAKER HUGHES



BGGM (1945.0 to 2014.0) Dip: 66.99° Field: 52832.7 nT  
Magnetic North is 8.45 degrees East of True North (at 7/16/2013)

To correct azimuth from Magnetic to True add 8.45 degrees





# Planned Wellpath Report

STATE NORTH PLATTE F-J-26HC (REV-A.1) PWP  
Page 1 of 8



REFERENCE WELLPATH IDENTIFICATION			
Operator	BONANZA CREEK OIL COMPANY	Slot	SLOT#02 STATE NORTH PLATTE F-J-26HC (437'FNL & 956'FWL,SEC.26)
Area	COLORADO	Well	STATE NORTH PLATTE F-J-26HC
Field	WELD COUNTY	Wellbore	STATE NORTH PLATTE F-J-26HC PWB
Facility	SEC.26-T5N-R63W		

REPORT SETUP INFORMATION			
Projection System	NAD83 / Lambert Colorado SP, Northern Zone (501), US feet	Software System	WellArchitect® 4.0.0
North Reference	True	User	Guenaler
Scale	0.999959	Report Generated	8/7/2013 at 4:35:05 PM
Convergence at slot	n/a	Database/Source file	WA_Denver/STATE_NORTH_PLATTE_F-J-26HC_PWB.xml

WELLPATH LOCATION						
	Local coordinates		Grid coordinates		Geographic coordinates	
	North[ft]	East[ft]	Easting[US ft]	Northing[US ft]	Latitude	Longitude
Slot Location	18.22	0.00	3303950.61	1381792.75	40°22'34.644"N	104°24'32.436"W
Facility Reference Pt			3303950.84	1381774.54	40°22'34.464"N	104°24'32.436"W
Field Reference Pt			3327718.19	1377782.99	40°21'52.020"N	104°19'26.040"W

WELLPATH DATUM			
Calculation method	Minimum curvature	CADE 22 (RKB) to Facility Vertical Datum	4582.00ft
Horizontal Reference Pt	Slot	CADE 22 (RKB) to Mean Sea Level	4582.00ft
Vertical Reference Pt	CADE 22 (RKB)	CADE 22 (RKB) to Mud Line at Slot (SLOT#02 STATE NORTH PLATTE F-J-26HC (437'FNL & 956'FWL,SEC.26))	4582.00ft
MD Reference Pt	CADE 22 (RKB)	Section Origin	N 0.00, E 0.00 ft
Field Vertical Reference	Mean Sea Level	Section Azimuth	175.68°



# Planned Wellpath Report

STATE NORTH PLATTE F-J-26HC (REV-A.1) PWP  
Page 2 of 8



REFERENCE WELLPATH IDENTIFICATION			
Operator	BONANZA CREEK OIL COMPANY	Slot	SLOT#02 STATE NORTH PLATTE F-J-26HC (437'FNL & 956'FWL,SEC.26)
Area	COLORADO	Well	STATE NORTH PLATTE F-J-26HC
Field	WELD COUNTY	Wellbore	STATE NORTH PLATTE F-J-26HC PWB
Facility	SEC.26-T5N-R63W		

WELLPATH DATA (122 stations) † = interpolated/extrapolated station										
MD [ft]	Inclination [°]	Azimuth [°]	TVD [ft]	Vert Sect [ft]	North [ft]	East [ft]	Latitude	Longitude	DLS [°/100ft]	Comments
0.00†	0.000	42.470	0.00	0.00	0.00	0.00	40°22'34.644"N	104°24'32.436"W	0.00	
17.00	0.000	42.470	17.00	0.00	0.00	0.00	40°22'34.644"N	104°24'32.436"W	0.00	Tie On
117.00†	0.000	42.470	117.00	0.00	0.00	0.00	40°22'34.644"N	104°24'32.436"W	0.00	
217.00†	0.000	42.470	217.00	0.00	0.00	0.00	40°22'34.644"N	104°24'32.436"W	0.00	
317.00†	0.000	42.470	317.00	0.00	0.00	0.00	40°22'34.644"N	104°24'32.436"W	0.00	
417.00†	0.000	42.470	417.00	0.00	0.00	0.00	40°22'34.644"N	104°24'32.436"W	0.00	
517.00†	0.000	42.470	517.00	0.00	0.00	0.00	40°22'34.644"N	104°24'32.436"W	0.00	
600.00	0.000	42.470	600.00	0.00	0.00	0.00	40°22'34.644"N	104°24'32.436"W	0.00	End of Tangent
617.00†	0.340	42.470	617.00	-0.03	0.04	0.03	40°22'34.644"N	104°24'32.436"W	2.00	
717.00†	2.340	42.470	716.97	-1.64	1.76	1.61	40°22'34.661"N	104°24'32.415"W	2.00	
817.00†	4.340	42.470	816.79	-5.62	6.06	5.55	40°22'34.704"N	104°24'32.364"W	2.00	
917.00†	6.340	42.470	916.35	-12.00	12.92	11.83	40°22'34.772"N	104°24'32.283"W	2.00	
1017.00†	8.340	42.470	1015.53	-20.74	22.35	20.46	40°22'34.865"N	104°24'32.172"W	2.00	
1117.00†	10.340	42.470	1114.20	-31.85	34.32	31.41	40°22'34.983"N	104°24'32.030"W	2.00	
1200.00	12.000	42.470	1195.62	-42.86	46.18	42.27	40°22'35.100"N	104°24'31.890"W	2.00	End of Build
1217.00†	12.000	42.470	1212.25	-45.28	48.78	44.66	40°22'35.126"N	104°24'31.859"W	0.00	
1317.00†	12.000	42.470	1310.07	-59.51	64.12	58.69	40°22'35.278"N	104°24'31.678"W	0.00	
1417.00†	12.000	42.470	1407.88	-73.75	79.46	72.73	40°22'35.429"N	104°24'31.496"W	0.00	
1517.00†	12.000	42.470	1505.70	-87.98	94.79	86.77	40°22'35.581"N	104°24'31.315"W	0.00	
1617.00†	12.000	42.470	1603.51	-102.22	110.13	100.81	40°22'35.732"N	104°24'31.133"W	0.00	
1717.00†	12.000	42.470	1701.33	-116.45	125.47	114.85	40°22'35.884"N	104°24'30.952"W	0.00	
1817.00†	12.000	42.470	1799.14	-130.69	140.80	128.89	40°22'36.035"N	104°24'30.771"W	0.00	
1917.00†	12.000	42.470	1896.95	-144.92	156.14	142.92	40°22'36.187"N	104°24'30.589"W	0.00	
2017.00†	12.000	42.470	1994.77	-159.16	171.47	156.96	40°22'36.338"N	104°24'30.408"W	0.00	
2117.00†	12.000	42.470	2092.58	-173.39	186.81	171.00	40°22'36.490"N	104°24'30.227"W	0.00	
2217.00†	12.000	42.470	2190.40	-187.62	202.15	185.04	40°22'36.642"N	104°24'30.045"W	0.00	
2317.00†	12.000	42.470	2288.21	-201.86	217.48	199.08	40°22'36.793"N	104°24'29.864"W	0.00	
2417.00†	12.000	42.470	2386.03	-216.09	232.82	213.12	40°22'36.945"N	104°24'29.682"W	0.00	
2517.00†	12.000	42.470	2483.84	-230.33	248.16	227.15	40°22'37.096"N	104°24'29.501"W	0.00	
2617.00†	12.000	42.470	2581.66	-244.56	263.49	241.19	40°22'37.248"N	104°24'29.320"W	0.00	



# Planned Wellpath Report

STATE NORTH PLATTE F-J-26HC (REV-A.1) PWP  
Page 3 of 8



REFERENCE WELLPATH IDENTIFICATION			
Operator	BONANZA CREEK OIL COMPANY	Slot	SLOT#02 STATE NORTH PLATTE F-J-26HC (437'FNL & 956'FWL,SEC.26)
Area	COLORADO	Well	STATE NORTH PLATTE F-J-26HC
Field	WELD COUNTY	Wellbore	STATE NORTH PLATTE F-J-26HC PWB
Facility	SEC.26-T5N-R63W		

WELLPATH DATA (122 stations) † = interpolated/extrapolated station										
MD [ft]	Inclination [°]	Azimuth [°]	TVD [ft]	Vert Sect [ft]	North [ft]	East [ft]	Latitude	Longitude	DLS [°/100ft]	Comments
2717.00†	12.000	42.470	2679.47	-258.80	278.83	255.23	40°22'37.399"N	104°24'29.138"W	0.00	
2817.00†	12.000	42.470	2777.29	-273.03	294.16	269.27	40°22'37.551"N	104°24'28.957"W	0.00	
2917.00†	12.000	42.470	2875.10	-287.27	309.50	283.31	40°22'37.702"N	104°24'28.775"W	0.00	
3017.00†	12.000	42.470	2972.92	-301.50	324.84	297.35	40°22'37.854"N	104°24'28.594"W	0.00	
3117.00†	12.000	42.470	3070.73	-315.73	340.17	311.38	40°22'38.005"N	104°24'28.413"W	0.00	
3217.00†	12.000	42.470	3168.55	-329.97	355.51	325.42	40°22'38.157"N	104°24'28.231"W	0.00	
3316.86	12.000	42.470	3266.22	-344.18	370.82	339.44	40°22'38.308"N	104°24'28.050"W	0.00	End of Tangent
3317.00†	11.997	42.470	3266.36	-344.20	370.84	339.46	40°22'38.309"N	104°24'28.050"W	2.00	
3417.00†	9.997	42.470	3364.52	-357.26	384.91	352.34	40°22'38.448"N	104°24'27.883"W	2.00	
3517.00†	7.997	42.470	3463.28	-367.97	396.45	362.90	40°22'38.562"N	104°24'27.747"W	2.00	
3617.00†	5.997	42.470	3562.54	-376.31	405.43	371.12	40°22'38.650"N	104°24'27.641"W	2.00	
3717.00†	3.997	42.470	3662.15	-382.27	411.86	377.00	40°22'38.714"N	104°24'27.565"W	2.00	
3817.00†	1.997	42.470	3762.01	-385.85	415.72	380.54	40°22'38.752"N	104°24'27.519"W	2.00	
3916.86	0.000	180.674	3861.84	-387.04	417.00	381.71	40°22'38.765"N	104°24'27.504"W	2.00	End of Drop
3917.00†	0.000	180.674	3861.99	-387.04	417.00	381.71	40°22'38.765"N	104°24'27.504"W	0.00	
4017.00†	0.000	180.674	3961.99	-387.04	417.00	381.71	40°22'38.765"N	104°24'27.504"W	0.00	
4117.00†	0.000	180.674	4061.99	-387.04	417.00	381.71	40°22'38.765"N	104°24'27.504"W	0.00	
4217.00†	0.000	180.674	4161.99	-387.04	417.00	381.71	40°22'38.765"N	104°24'27.504"W	0.00	
4317.00†	0.000	180.674	4261.99	-387.04	417.00	381.71	40°22'38.765"N	104°24'27.504"W	0.00	
4417.00†	0.000	180.674	4361.99	-387.04	417.00	381.71	40°22'38.765"N	104°24'27.504"W	0.00	
4517.00†	0.000	180.674	4461.99	-387.04	417.00	381.71	40°22'38.765"N	104°24'27.504"W	0.00	
4617.00†	0.000	180.674	4561.99	-387.04	417.00	381.71	40°22'38.765"N	104°24'27.504"W	0.00	
4717.00†	0.000	180.674	4661.99	-387.04	417.00	381.71	40°22'38.765"N	104°24'27.504"W	0.00	
4817.00†	0.000	180.674	4761.99	-387.04	417.00	381.71	40°22'38.765"N	104°24'27.504"W	0.00	
4917.00†	0.000	180.674	4861.99	-387.04	417.00	381.71	40°22'38.765"N	104°24'27.504"W	0.00	
5017.00†	0.000	180.674	4961.99	-387.04	417.00	381.71	40°22'38.765"N	104°24'27.504"W	0.00	
5117.00†	0.000	180.674	5061.99	-387.04	417.00	381.71	40°22'38.765"N	104°24'27.504"W	0.00	
5217.00†	0.000	180.674	5161.99	-387.04	417.00	381.71	40°22'38.765"N	104°24'27.504"W	0.00	
5317.00†	0.000	180.674	5261.99	-387.04	417.00	381.71	40°22'38.765"N	104°24'27.504"W	0.00	
5417.00†	0.000	180.674	5361.99	-387.04	417.00	381.71	40°22'38.765"N	104°24'27.504"W	0.00	



# Planned Wellpath Report

STATE NORTH PLATTE F-J-26HC (REV-A.1) PWP

Page 4 of 8



REFERENCE WELLPATH IDENTIFICATION			
Operator	BONANZA CREEK OIL COMPANY	Slot	SLOT#02 STATE NORTH PLATTE F-J-26HC (437'FNL & 956'FWL,SEC.26)
Area	COLORADO	Well	STATE NORTH PLATTE F-J-26HC
Field	WELD COUNTY	Wellbore	STATE NORTH PLATTE F-J-26HC PWB
Facility	SEC.26-T5N-R63W		

WELLPATH DATA (122 stations) † = interpolated/extrapolated station										
MD [ft]	Inclination [°]	Azimuth [°]	TVD [ft]	Vert Sect [ft]	North [ft]	East [ft]	Latitude	Longitude	DLS [°/100ft]	Comments
5517.00†	0.000	180.674	5461.99	-387.04	417.00	381.71	40°22'38.765"N	104°24'27.504"W	0.00	
5617.00†	0.000	180.674	5561.99	-387.04	417.00	381.71	40°22'38.765"N	104°24'27.504"W	0.00	
5717.00†	0.000	180.674	5661.99	-387.04	417.00	381.71	40°22'38.765"N	104°24'27.504"W	0.00	
5817.00†	0.000	180.674	5761.99	-387.04	417.00	381.71	40°22'38.765"N	104°24'27.504"W	0.00	
5917.00†	0.000	180.674	5861.99	-387.04	417.00	381.71	40°22'38.765"N	104°24'27.504"W	0.00	
6017.00†	0.000	180.674	5961.99	-387.04	417.00	381.71	40°22'38.765"N	104°24'27.504"W	0.00	
6037.21	0.000	180.674	5982.20	-387.04	417.00	381.71	40°22'38.765"N	104°24'27.504"W	0.00	End of Tangent
6117.00†	8.777	180.674	6061.68	-380.97	410.90	381.64	40°22'38.704"N	104°24'27.505"W	11.00	
6217.00†	19.777	180.674	6158.44	-356.44	386.28	381.35	40°22'38.461"N	104°24'27.509"W	11.00	
6317.00†	30.777	180.674	6248.73	-313.97	343.65	380.85	40°22'38.040"N	104°24'27.515"W	11.00	
6417.00†	41.777	180.674	6329.22	-255.11	284.58	380.15	40°22'37.456"N	104°24'27.524"W	11.00	
6517.00†	52.777	180.674	6396.96	-182.04	211.23	379.29	40°22'36.731"N	104°24'27.535"W	11.00	
6617.00†	63.777	180.674	6449.46	-97.44	126.31	378.29	40°22'35.892"N	104°24'27.548"W	11.00	
6673.58	70.000	180.674	6471.66	-45.62	74.30	377.68	40°22'35.378"N	104°24'27.556"W	11.00	End of Build
6708.58†	70.000	180.674	6483.63	-12.86	41.41	377.29	40°22'35.053"N	104°24'27.561"W	0.00	4.5" Hanging Liner
6717.00†	70.000	180.674	6486.51	-4.97	33.50	377.20	40°22'34.975"N	104°24'27.562"W	0.00	
6743.58	70.000	180.674	6495.60	19.91	8.53	376.90	40°22'34.728"N	104°24'27.566"W	0.00	End of Tangent
6817.00†	78.077	180.674	6515.77	90.17	-62.00	376.07	40°22'34.031"N	104°24'27.577"W	11.00	
6917.00†	89.077	180.674	6526.94	189.01	-161.22	374.91	40°22'33.051"N	104°24'27.592"W	11.00	
6925.40	90.000	180.674	6527.01	197.38	-169.61	374.81	40°22'32.968"N	104°24'27.593"W	11.00	End of 3D Arc
7017.00†	90.000	180.674	6527.01	288.63	-261.21	373.73	40°22'32.063"N	104°24'27.607"W	0.00	
7117.00†	90.000	180.674	6527.01	388.25	-361.20	372.55	40°22'31.075"N	104°24'27.622"W	0.00	
7217.00†	90.000	180.674	6527.01	487.87	-461.19	371.38	40°22'30.087"N	104°24'27.638"W	0.00	
7317.00†	90.000	180.674	6527.01	587.49	-561.19	370.20	40°22'29.098"N	104°24'27.653"W	0.00	
7417.00†	90.000	180.674	6527.01	687.11	-661.18	369.02	40°22'28.110"N	104°24'27.668"W	0.00	
7517.00†	90.000	180.674	6527.01	786.73	-761.17	367.85	40°22'27.122"N	104°24'27.683"W	0.00	
7617.00†	90.000	180.674	6527.01	886.35	-861.17	366.67	40°22'26.134"N	104°24'27.698"W	0.00	
7717.00†	90.000	180.674	6527.01	985.97	-961.16	365.49	40°22'25.146"N	104°24'27.714"W	0.00	
7817.00†	90.000	180.674	6527.01	1085.59	-1061.15	364.32	40°22'24.158"N	104°24'27.729"W	0.00	
7917.00†	90.000	180.674	6527.01	1185.21	-1161.15	363.14	40°22'23.170"N	104°24'27.744"W	0.00	



# Planned Wellpath Report

STATE NORTH PLATTE F-J-26HC (REV-A.1) PWP  
Page 5 of 8



REFERENCE WELLPATH IDENTIFICATION			
Operator	BONANZA CREEK OIL COMPANY	Slot	SLOT#02 STATE NORTH PLATTE F-J-26HC (437'FNL & 956'FWL,SEC.26)
Area	COLORADO	Well	STATE NORTH PLATTE F-J-26HC
Field	WELD COUNTY	Wellbore	STATE NORTH PLATTE F-J-26HC PWB
Facility	SEC.26-T5N-R63W		

WELLPATH DATA (122 stations) † = interpolated/extrapolated station										
MD [ft]	Inclination [°]	Azimuth [°]	TVD [ft]	Vert Sect [ft]	North [ft]	East [ft]	Latitude	Longitude	DLS [°/100ft]	Comments
8017.00†	90.000	180.674	6527.01	1284.83	-1261.14	361.96	40°22'22.182"N	104°24'27.759"W	0.00	
8117.00†	90.000	180.674	6527.01	1384.45	-1361.13	360.79	40°22'21.194"N	104°24'27.775"W	0.00	
8217.00†	90.000	180.674	6527.01	1484.07	-1461.13	359.61	40°22'20.206"N	104°24'27.790"W	0.00	
8317.00†	90.000	180.674	6527.01	1583.69	-1561.12	358.43	40°22'19.217"N	104°24'27.805"W	0.00	
8417.00†	90.000	180.674	6527.01	1683.31	-1661.11	357.26	40°22'18.229"N	104°24'27.820"W	0.00	
8517.00†	90.000	180.674	6527.01	1782.93	-1761.10	356.08	40°22'17.241"N	104°24'27.835"W	0.00	
8617.00†	90.000	180.674	6527.01	1882.55	-1861.10	354.90	40°22'16.253"N	104°24'27.851"W	0.00	
8717.00†	90.000	180.674	6527.01	1982.17	-1961.09	353.73	40°22'15.265"N	104°24'27.866"W	0.00	
8817.00†	90.000	180.674	6527.01	2081.79	-2061.08	352.55	40°22'14.277"N	104°24'27.881"W	0.00	
8917.00†	90.000	180.674	6527.01	2181.41	-2161.08	351.37	40°22'13.289"N	104°24'27.896"W	0.00	
9017.00†	90.000	180.674	6527.01	2281.03	-2261.07	350.20	40°22'12.301"N	104°24'27.912"W	0.00	
9117.00†	90.000	180.674	6527.01	2380.65	-2361.06	349.02	40°22'11.313"N	104°24'27.927"W	0.00	
9217.00†	90.000	180.674	6527.01	2480.27	-2461.06	347.84	40°22'10.325"N	104°24'27.942"W	0.00	
9317.00†	90.000	180.674	6527.01	2579.89	-2561.05	346.66	40°22'09.336"N	104°24'27.957"W	0.00	
9417.00†	90.000	180.674	6527.00	2679.51	-2661.04	345.49	40°22'08.348"N	104°24'27.972"W	0.00	
9517.00†	90.000	180.674	6527.00	2779.13	-2761.04	344.31	40°22'07.360"N	104°24'27.988"W	0.00	
9617.00†	90.000	180.674	6527.00	2878.75	-2861.03	343.13	40°22'06.372"N	104°24'28.003"W	0.00	
9717.00†	90.000	180.674	6527.00	2978.37	-2961.02	341.96	40°22'05.384"N	104°24'28.018"W	0.00	
9817.00†	90.000	180.674	6527.00	3077.99	-3061.01	340.78	40°22'04.396"N	104°24'28.033"W	0.00	
9917.00†	90.000	180.674	6527.00	3177.61	-3161.01	339.60	40°22'03.408"N	104°24'28.049"W	0.00	
10017.00†	90.000	180.674	6527.00	3277.23	-3261.00	338.43	40°22'02.420"N	104°24'28.064"W	0.00	
10117.00†	90.000	180.674	6527.00	3376.85	-3360.99	337.25	40°22'01.432"N	104°24'28.079"W	0.00	
10217.00†	90.000	180.674	6527.00	3476.47	-3460.99	336.07	40°22'00.444"N	104°24'28.094"W	0.00	
10317.00†	90.000	180.674	6527.00	3576.09	-3560.98	334.90	40°21'59.455"N	104°24'28.109"W	0.00	
10417.00†	90.000	180.674	6527.00	3675.71	-3660.97	333.72	40°21'58.467"N	104°24'28.125"W	0.00	
10517.00†	90.000	180.674	6527.00	3775.33	-3760.97	332.54	40°21'57.479"N	104°24'28.140"W	0.00	
10617.00†	90.000	180.674	6527.00	3874.95	-3860.96	331.37	40°21'56.491"N	104°24'28.155"W	0.00	
10717.00†	90.000	180.674	6527.00	3974.57	-3960.95	330.19	40°21'55.503"N	104°24'28.170"W	0.00	
10817.00†	90.000	180.674	6527.00	4074.19	-4060.95	329.01	40°21'54.515"N	104°24'28.186"W	0.00	
10917.00†	90.000	180.674	6527.00	4173.81	-4160.94	327.84	40°21'53.527"N	104°24'28.201"W	0.00	



# Planned Wellpath Report

STATE NORTH PLATTE F-J-26HC (REV-A.1) PWP

Page 6 of 8



REFERENCE WELLPATH IDENTIFICATION			
Operator	BONANZA CREEK OIL COMPANY	Slot	SLOT#02 STATE NORTH PLATTE F-J-26HC (437'FNL & 956'FWL,SEC.26)
Area	COLORADO	Well	STATE NORTH PLATTE F-J-26HC
Field	WELD COUNTY	Wellbore	STATE NORTH PLATTE F-J-26HC PWB
Facility	SEC.26-T5N-R63W		

WELLPATH DATA (122 stations) † = interpolated/extrapolated station										
MD [ft]	Inclination [°]	Azimuth [°]	TVD [ft]	Vert Sect [ft]	North [ft]	East [ft]	Latitude	Longitude	DLS [°/100ft]	Comments
11017.00†	90.000	180.674	6527.00	4273.43	-4260.93	326.66	40°21'52.539"N	104°24'28.216"W	0.00	
11069.50	90.000	180.674	6527.00 <sup>1</sup>	4325.73	-4313.43	326.04	40°21'52.020"N	104°24'28.224"W	0.00	End of Tangent

HOLE & CASING SECTIONS -									
Ref Wellbore: STATE NORTH PLATTE F-J-26HC PWB					Ref Wellpath: STATE NORTH PLATTE F-J-26HC (REV-A.1) PWP				
String/Diameter	Start MD [ft]	End MD [ft]	Interval [ft]	Start TVD [ft]	End TVD [ft]	Start N/S [ft]	Start E/W [ft]	End N/S [ft]	End E/W [ft]
7in Casing Intermediate	17.00	6925.40	6908.40	17.00	6527.01	0.00	0.00	-169.61	374.81
6.125in Open Hole	6925.40	11069.50	4144.10	6527.01	6527.00	-169.61	374.81	-4313.43	326.04
4.5in Casing Production	17.00	11069.50	11052.50	17.00	6527.00	0.00	0.00	-4313.43	326.04





# Planned Wellpath Report

STATE NORTH PLATTE F-J-26HC (REV-A.1) PWP  
Page 7 of 8



REFERENCE WELLPATH IDENTIFICATION			
Operator	BONANZA CREEK OIL COMPANY	Slot	SLOT#02 STATE NORTH PLATTE F-J-26HC (437'FNL & 956'FWL,SEC.26)
Area	COLORADO	Well	STATE NORTH PLATTE F-J-26HC
Field	WELD COUNTY	Wellbore	STATE NORTH PLATTE F-J-26HC PWB
Facility	SEC.26-T5N-R63W		

TARGETS									
Name	MD [ft]	TVD [ft]	North [ft]	East [ft]	Grid East [US ft]	Grid North [US ft]	Latitude	Longitude	Shape
STATE NORTH PLATTE F-J-26HNB SECTION 26		0.00	-18.22	0.00	3303950.84	1381774.54	40°22'34.464"N	104°24'32.436"W	polygon
STATE NORTH PLATTE F-J-26HNB HARDLINE (460' SETBACKS)		6352.00	-18.22	0.00	3303950.84	1381774.54	40°22'34.464"N	104°24'32.436"W	polygon
1) STATE NORTH PLATTE F-J-26HC BHL From Plat Rev-1 (470'FSL & 1340'FWL,SEC.26)	11069.50	6527.00	-4313.43	326.04	3304329.68	1377483.84	40°21'52.020"N	104°24'28.224"W	point
STATE NORTH PLATTE F-J-26HC TARGET 1		6527.00	-94.72	381.71	3304333.44	1381702.74	40°22'33.708"N	104°24'27.504"W	point
Ex.STATE #1-26 (500' Radius)		7075.00	-2771.74	3557.52	3307541.81	1379065.10	40°22'07.252"N	104°23'46.475"W	circle

SURVEY PROGRAM -				
Ref Wellbore: STATE NORTH PLATTE F-J-26HC PWB		Ref Wellpath: STATE NORTH PLATTE F-J-26HC (REV-A.1) PWP		
Start MD [ft]	End MD [ft]	Positional Uncertainty Model	Log Name/Comment	Wellbore
17.00	11069.50	NaviTrak (Standard)		STATE NORTH PLATTE F-J-26HC PWB





# Planned Wellpath Report

STATE NORTH PLATTE F-J-26HC (REV-A.1) PWP  
Page 8 of 8



REFERENCE WELLPATH IDENTIFICATION			
Operator	BONANZA CREEK OIL COMPANY	Slot	SLOT#02 STATE NORTH PLATTE F-J-26HC (437'FNL & 956'FWL,SEC.26)
Area	COLORADO	Well	STATE NORTH PLATTE F-J-26HC
Field	WELD COUNTY	Wellbore	STATE NORTH PLATTE F-J-26HC PWB
Facility	SEC.26-T5N-R63W		

WELLPATH COMMENTS				
MD [ft]	Inclination [°]	Azimuth [°]	TVD [ft]	Comment
6708.58	70.000	180.674	6483.63	4.5" Hanging Liner

DESIGN COMMENTS				
MD [ft]	Inclination [°]	Azimuth [°]	TVD [ft]	Comment
17.00	0.000	42.470	17.00	Tie On
600.00	0.000	42.470	600.00	End of Tangent
1200.00	12.000	42.470	1195.62	End of Build
3316.86	12.000	42.470	3266.22	End of Tangent
3916.86	0.000	180.674	3861.84	End of Drop
6037.21	0.000	180.674	5982.20	End of Tangent
6673.58	70.000	180.674	6471.66	End of Build
6743.58	70.000	180.674	6495.60	End of Tangent
6925.40	90.000	180.674	6527.01	End of 3D Arc
11069.50	90.000	180.674	6527.00	End of Tangent