

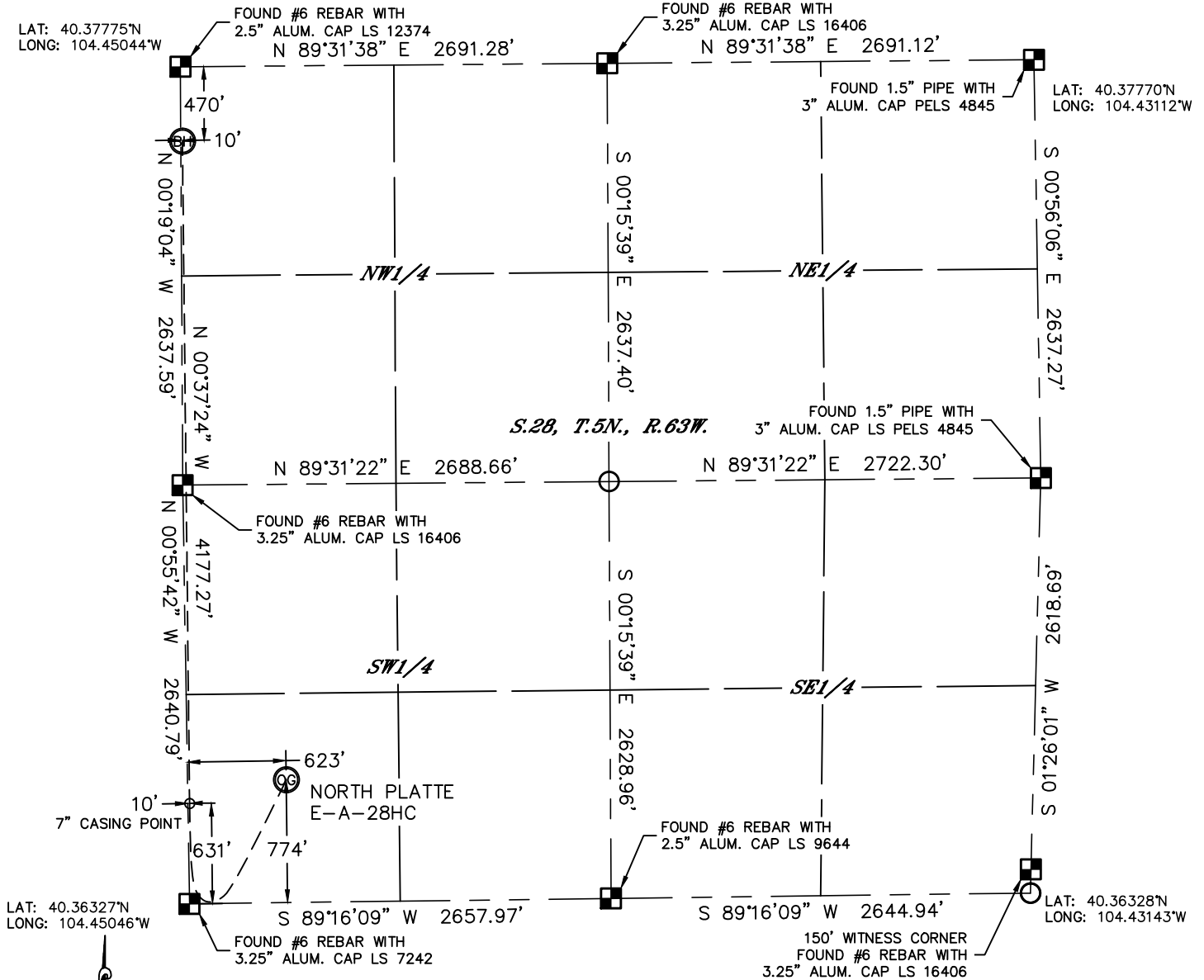


Lat40°, Inc. 1635 Foxtrail Drive, Suite 325 Loveland, CO 970-776-3321

WELL LOCATION CERTIFICATE

THIS MAP DOES NOT REPRESENT A BOUNDARY SURVEY

SECTION: 28
TOWNSHIP: 5N
RANGE: 63W



In accordance with a request from Timothy Jayne with BONANZA CREEK ENERGY, INC. Lat40°, Inc. has determined the surface location of the NORTH PLATTE E-A-28HC to be 774' from the SOUTH line and 623' from the WEST line and the bottom hole to be 470' from the NORTH line and 10' from the WEST line as measured at right angles from the section lines of Section 28, Township 5 North, Range 63 West of the Sixth Principal Meridian, County of Weld, State of Colorado.

I hereby state that this Well Location Certificate was prepared by me, or under my direct supervision, that the fieldwork was completed on 7/25/2013, for and on behalf of BONANZA CREEK ENERGY, INC. That this is not a Land Survey Plat or an Improvement Survey Plat, and that it is not to be relied upon for establishment of fence, building, or other future improvement lines.

SURFACE LOCATION

LAT: 40.36539°N
LONG: 104.44823°W
PDOP: 1.7
ELEV: 4551'
1/4,1/4: SW1/4SW1/4
NEAREST PROPERTY LINE:
403' SOUTHWEST

7" CASING POINT

LAT: 40.36500°N
LONG: 104.45043°W
1/4,1/4: SW1/4SW1/4

BOTTOM HOLE

LAT: 40.37646°N
LONG: 104.45041°W
1/4,1/4: NW1/4NW1/4

NOTE:

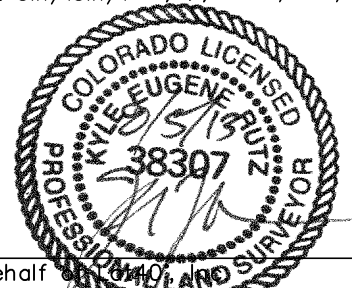
- 1) Bearings shown are Grid Bearings of the Colorado State Plane Coordinate System, North Zone, North American Datum 1983/2007. The lineal dimensions as contained herein are based upon the "U.S. Survey Foot."
- 2) Ground elevations are based on an observed GPS elevation (NAVD 1988 DATUM).
- 3) NEAREST EXISTING WELL: NORTH PLATTE J-F-28HZ, 41'
- 4) IMPROVEMENTS: See LOCATION DRAWING for all visible improvements within 400' of disturbed area.
- 5) SURFACE USE: EXISTING PAD / PASTURE
- 6) INSTRUMENT OPERATOR: WYATT HALL

NOTE

According to Colorado law, you must commence any legal action based upon any defect in this W.L.C. within three years after you discover such defect. In no event, may any action based upon any defect in this survey be commenced more than ten years after the date of the certificate shown hereon. (13-80-105 C.R.S.)

LEGEND

- = ALIQUOT MONUMENT AS DESCRIBED
○ = CALCULATED POSITION



Kyle E. Rutz—On behalf of
Colorado Licensed Professional Land Surveyor No. 38307
PROJECT#: 2012053

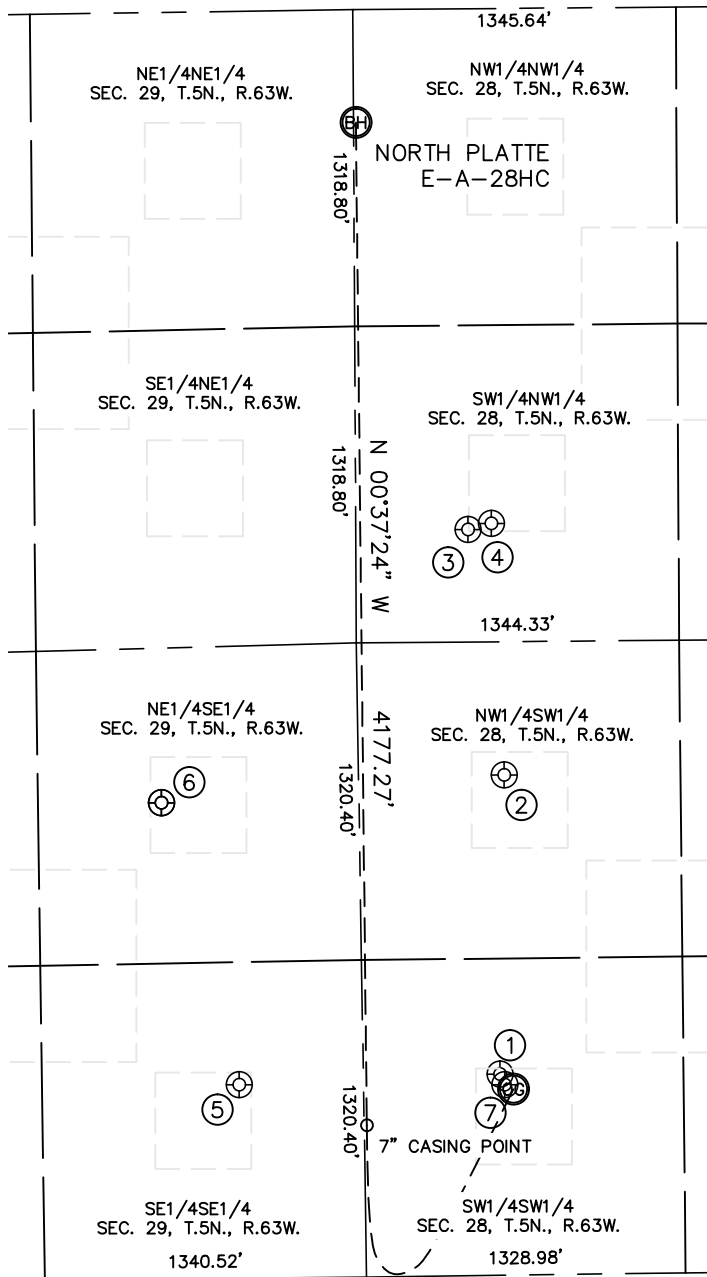


Lat40°, Inc. 1635 Foxtrail Drive, Suite 325 Loveland, CO 970-776-3321

SITE SKETCH

NORTH PLATTE E-A-28HC

SECTION: 28
TOWNSHIP: 5N
RANGE: 63W



①

PETERSON 14-28
SW1/4SW1/4
837' FSL
569' FWL
LAT-40.36556°N
LONG-104.44843°W
PDOP: 1.8
ELEV: 4551'

②

DOW 13-28
NW1/4SW1/4
2083' FSL
607' FWL
LAT-40.36898°N
LONG-104.44831°W
PDOP: 3.2
ELEV: 4541'

③

DOW 1-29
SW1/4NW1/4
2169' FNL
468' FWL
LAT-40.37179°N
LONG-104.44881°W
PDOP: 2.1
ELEV: 4541'

④

DOW 12-28
SW1/4NW1/4
2145' FNL
565' FWL
LAT-40.37186°N
LONG-104.44846°W
PDOP: 2.1
ELEV: 4541'

⑤

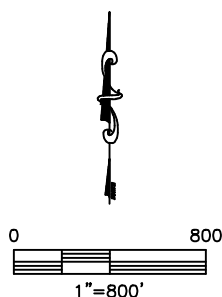
MORGANTE #44-29U
SE1/4SE1/4
636' FNL
2035' FWL
LAT-40.36548°N
LONG-104.45233°W
PDOP: 2.1
ELEV: 4558'

⑥

VIEFHAUS #43-29U
NE1/4SE1/4
609' FNL
2136' FWL
LAT-40.36871°N
LONG-104.45344°W
PDOP: 3.9
ELEV: 4553'

⑦

NORTH PLATTE J-F-28HZ
SW1/4SW1/4
793' FSL
587' FWL
LAT-40.36544°N
LONG-104.44836°W
PDOP: 2.0
ELEV: 4552'



DATE: rev8/5/2013
PROJECT#: 2012053