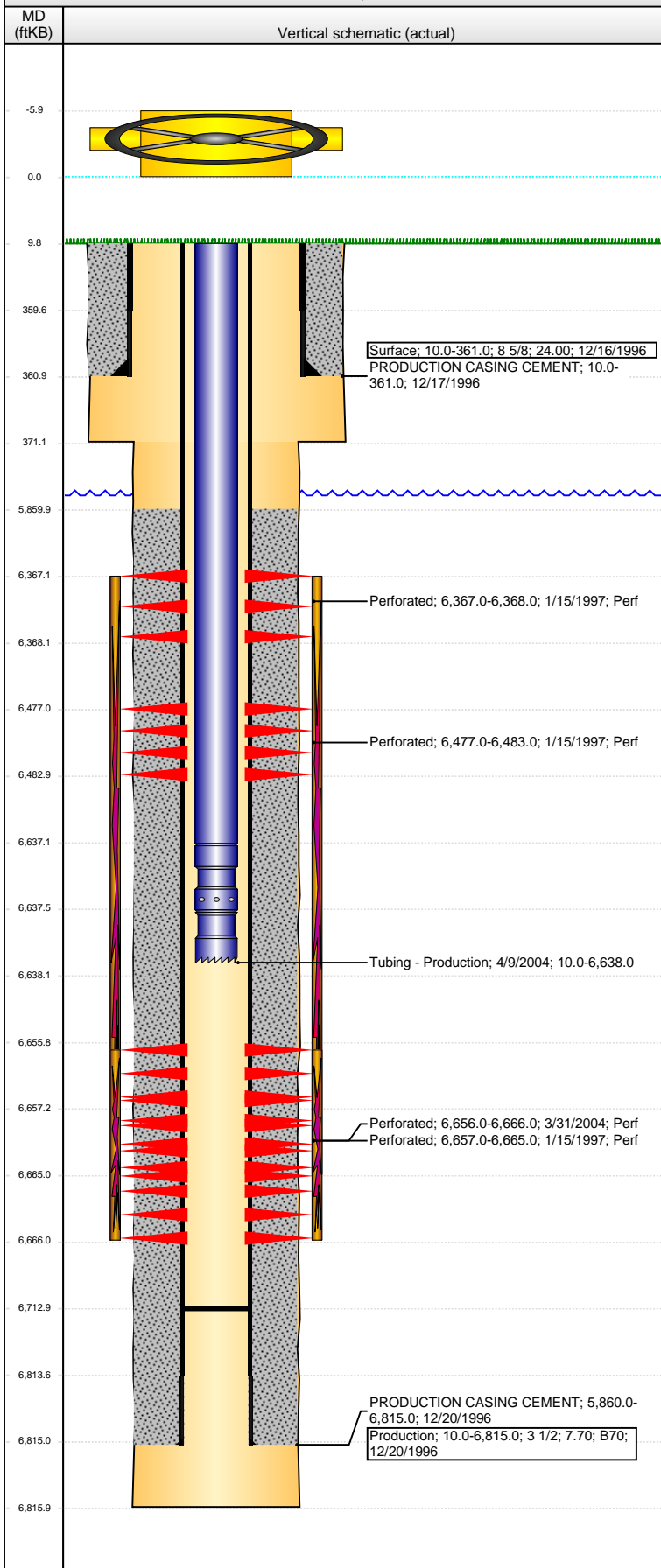


Well Name: ROBIN GREEN STATE BB18-04

VERTICAL - ORIGINAL HOLE, 8/23/2013 9:28:34 AM



Well Header

API	Business Unit	District	Well Config
05-123-18960	WATTENBERG	15	VERTICAL
Original KB Elevation (ft)	KB - GL / MSL (ftKB)	Spud Date	P & A Date
4,607.00	10.00	12/16/1996	
Comment			
st lse 80-5199-S			
Directions To Well			

Congressional Location

Quarter 1	Quarter 2	Quarter 3	Quarter 4	Section	Township	Twnshp N...	Range	Rng E/W Dir
		NW	NW	18	5	N	63	W

Bottom Hole Location

North-South Distance (ft)	From N or S Line	East-West Distance (ft)	From E or W Line

Plug Back Total Depths

Date	Depth (ftKB)	Method	Com
12/20/1996	6,713.0	CASING TALLY	

Wellbore Sections

Section Des	Size (in)	Act Top (ftKB)	Act Btm (ftKB)
SURFACE	12 1/4	10.0	371.0
PRODUCTION	7 7/8	371.0	6,816.0

Zone Statuses

Zone Name	Status Date	Status	Job
CODELL	2/4/1997	PR	DRILLING/COMPLETION - ORIGINAL, 12/16/1996 00:00
CODELL	4/12/2004	PR	RE-FRAC, 3/29/2004 00:00
NIOBRARA	2/4/1997	PR	DRILLING/COMPLETION - ORIGINAL, 12/16/1996 00:00

Casing Strings

Surface, 361.0ftKB

Casing Description	Run Date	OD (in)	Wt/Len (l...)	Grade	Top (ftKB)	MD (ftKB)
Surface	12/16/1996	8 5/8	24.00		10.0	361.0

Production, 6,815.0ftKB

Casing Description	Run Date	OD (in)	Wt/Len (l...)	Grade	Top (ftKB)	MD (ftKB)
Production	12/20/1996	3 1/2	7.70	B70	10.0	6,815.0

Cement

Description	Top Depth (ftKB)	Bottom Depth (ftKB)
PRODUCTION CASING CEMENT	10.0	361.0
Description	Top Depth (ftKB)	Bottom Depth (ftKB)
PRODUCTION CASING CEMENT	5,860.0	6,815.0

Tubing Components

Item Des	OD (in)	Wt (lb/ft)	Grade	Jts	Len (ft)	Btm (ftKB)	Btm (TVD) (ftKB)
Tubing	2 1/16	3.25	J-55	201	6,627.00	6,637.0	
Pump Seating Nipple	2 1/16			1	0.50	6,637.5	
Notched collar	2 1/16			1	0.50	6,638.0	

Perforation Data

Zone	Bnch/St g	Entered Shot Total	Top (ftKB)	Btm (ftKB)	Date
NIOBRARA, ORIGINAL HOLE	A	2	6,367.00	6,368.00	1/15/1997
NIOBRARA, ORIGINAL HOLE	B	6	6,477.00	6,483.00	1/15/1997
CODELL, ORIGINAL HOLE		40	6,656.00	6,666.00	3/31/2004
CODELL, ORIGINAL HOLE	B	32	6,657.00	6,665.00	1/15/1997

Stimulations & Treatments

Date	Zone	Primary Job Type
1/31/1997	NIOBRARA-CODELL, ORIGINAL HOLE	DRILLING/COMPLETION - ORIGINAL
Technical Result	Tech Result Details	Tech Result Note
Comment		
Date	Zone	Primary Job Type
4/7/2004	CODELL, ORIGINAL HOLE	RE-FRAC
Technical Result	Tech Result Details	Tech Result Note
Comment		

Well Name: ROBIN GREEN STATE BB18-04

VERTICAL - ORIGINAL HOLE, 8/23/2013 9:28:35 AM

Other In Hole

Run Date	Des	OD (in)	Top (ftKB)	Btm (ftKB)

Logs

Date	Type	Top (ftKB)	Btm (ftKB)
1/10/1997	CEMENT BOND	5,750.0	6,668.0
4/26/2010	INDUCTION	361.0	6,815.0

