

Synergy Resources

Well Name: **SRC Leffler 24-26NHZ**

Surface Location: SRC Leffler 14-26NHZ Pad Sec.26-T7N-R66W
North American Datum 1983 , US State Plane 1983 , Colorado Northern Zone

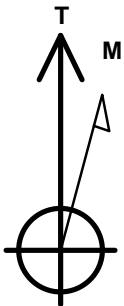
Ground Elevation: 4900.0

+N/-S	+E/-W	Northing	Easting	Latitude	Longitude	Slot
0.0	0.0	1445116.82	3208276.00	40.552829	-104.750480	

RKB-12' WELL @ 4912.0ft (RKB-12')

WELLBORE TARGET DETAILS

Name	TVD	+N/-S	+E/-W	Shape
SHL 210'FNL & 1054'FWL	1.0	0.0	0.3	Point
BHL 460'FSL & 2140'FWL	7210.0	-4629.1	1112.9	Point



Azimuths to True North
Magnetic North: 8.58°

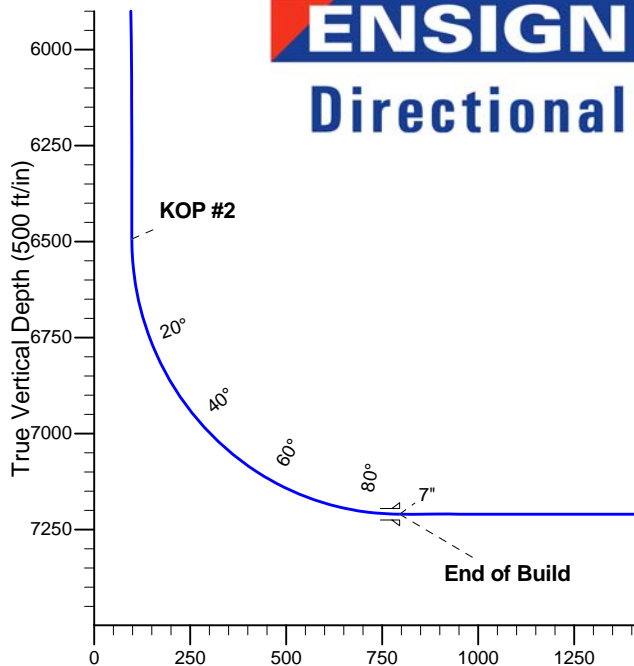
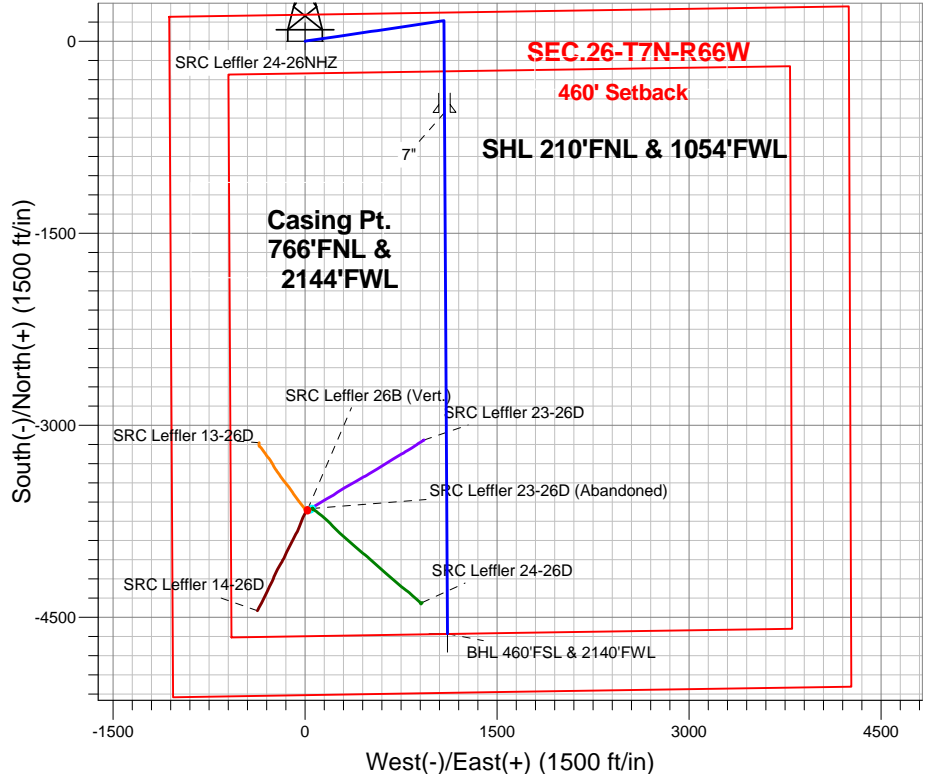
Magnetic Field
Strength: 52985.7snT
Dip Angle: 67.10°
Date: 8/8/2013
Model: IGRF2010

SRC Leffler 14-26NHZ Pad Sec.26-T7N-R66W
SRC Leffler 24-26NHZ
Plan #2 (8-08-13)
13:55, August 14 2013

ANNOTATIONS

TVD	MD	Annotation
1000.0	1000.0	KOP #1
6493.8	6616.1	KOP #2
7210.0	7741.1	End of Build

South(-)/North(+) (1500 ft/in)



ENSIGN
Directional

SECTION DETAILS

Sec	MD	Inc	Azi	TVD	+N/-S	+E/-W	DLeg	TFace	VSec	Target
1	0.0	0.00	0.00	0.0	0.0	0.0	0.00	0.00	0.0	
2	1000.0	0.00	0.00	1000.0	0.0	0.0	0.00	0.00	0.0	
3	1666.9	13.34	81.62	1660.9	11.3	76.4	2.00	81.62	6.9	
4	5755.4	13.34	81.62	5639.1	148.7	1009.6	0.00	0.00	91.4	
5	6422.3	0.00	0.00	6300.0	160.0	1086.0	2.00	180.00	98.3	
6	6616.1	0.00	0.00	6493.8	160.0	1086.0	0.00	0.00	98.3	
7	7741.1	90.00	179.68	7210.0	-556.2	1090.0	8.00	179.68	795.6	
8	11814.1	90.00	179.68	7210.0	-4629.1	1112.9	0.00	0.00	4761.0	BHL 460'FSL & 2140'FWL

BHL 460'FSL & 2140'FWL

Vertical Section at 166.48° (500 ft/in)



Synergy Resources

SEC.26-T7N-R66W

SRC Leffler 14-26NHZ Pad Sec.26-T7N-R66W

SRC Leffler 24-26NHZ

Wellbore #1

Plan: Plan #2 (8-08-13)

Standard Planning Report

14 August, 2013

Plan Sections										
Measured Depth (ft)	Inclination (°)	Azimuth (°)	Vertical Depth (ft)	+N/-S (ft)	+E/-W (ft)	Dogleg Rate (°/100ft)	Build Rate (°/100ft)	Turn Rate (°/100ft)	TFO (°)	Target
0.0	0.00	0.00	0.0	0.0	0.0	0.00	0.00	0.00	0.00	
1,000.0	0.00	0.00	1,000.0	0.0	0.0	0.00	0.00	0.00	0.00	
1,666.9	13.34	81.62	1,660.9	11.3	76.4	2.00	2.00	0.00	81.62	
5,755.4	13.34	81.62	5,639.1	148.7	1,009.6	0.00	0.00	0.00	0.00	
6,422.3	0.00	0.00	6,300.0	160.0	1,086.0	2.00	-2.00	0.00	180.00	
6,616.1	0.00	0.00	6,493.8	160.0	1,086.0	0.00	0.00	0.00	0.00	
7,741.1	90.00	179.68	7,210.0	-556.2	1,090.0	8.00	8.00	0.00	179.68	
11,814.1	90.00	179.68	7,210.0	-4,629.1	1,112.9	0.00	0.00	0.00	0.00	BHL 460'FSL & 214

Database:	Landmark	Local Co-ordinate Reference:	Well SRC Leffler 24-26NHZ
Company:	Synergy Resources	TVD Reference:	WELL @ 4912.0ft (RKB-12')
Project:	SEC.26-T7N-R66W	MD Reference:	WELL @ 4912.0ft (RKB-12')
Site:	SRC Leffler 14-26NHZ Pad	North Reference:	True
	Sec.26-T7N-R66W		
Well:	SRC Leffler 24-26NHZ	Survey Calculation Method:	Minimum Curvature
Wellbore:	Wellbore #1		
Design:	Plan #2 (8-08-13)		

Planned Survey									
Measured Depth (ft)	Inclination (°)	Azimuth (°)	Vertical Depth (ft)	+N/-S (ft)	+E/-W (ft)	Vertical Section (ft)	Dogleg Rate (°/100ft)	Build Rate (°/100ft)	Turn Rate (°/100ft)
0.0	0.00	0.00	0.0	0.0	0.0	0.0	0.00	0.00	0.00
1.0	0.00	0.00	1.0	0.0	0.0	0.0	0.00	0.00	0.00
SHL 210'FNL & 1054'FWL									
100.0	0.00	0.00	100.0	0.0	0.0	0.0	0.00	0.00	0.00
200.0	0.00	0.00	200.0	0.0	0.0	0.0	0.00	0.00	0.00
300.0	0.00	0.00	300.0	0.0	0.0	0.0	0.00	0.00	0.00
400.0	0.00	0.00	400.0	0.0	0.0	0.0	0.00	0.00	0.00
500.0	0.00	0.00	500.0	0.0	0.0	0.0	0.00	0.00	0.00
600.0	0.00	0.00	600.0	0.0	0.0	0.0	0.00	0.00	0.00
700.0	0.00	0.00	700.0	0.0	0.0	0.0	0.00	0.00	0.00
800.0	0.00	0.00	800.0	0.0	0.0	0.0	0.00	0.00	0.00
900.0	0.00	0.00	900.0	0.0	0.0	0.0	0.00	0.00	0.00
1,000.0	0.00	0.00	1,000.0	0.0	0.0	0.0	0.00	0.00	0.00
KOP #1									
1,100.0	2.00	81.62	1,100.0	0.3	1.7	0.2	2.00	2.00	0.00
1,200.0	4.00	81.62	1,199.8	1.0	6.9	0.6	2.00	2.00	0.00
1,300.0	6.00	81.62	1,299.5	2.3	15.5	1.4	2.00	2.00	0.00
1,400.0	8.00	81.62	1,398.7	4.1	27.6	2.5	2.00	2.00	0.00
1,500.0	10.00	81.62	1,497.5	6.3	43.1	3.9	2.00	2.00	0.00
1,600.0	12.00	81.62	1,595.6	9.1	61.9	5.6	2.00	2.00	0.00
1,666.9	13.34	81.62	1,660.9	11.3	76.4	6.9	2.00	2.00	0.00
1,700.0	13.34	81.62	1,693.1	12.4	84.0	7.6	0.00	0.00	0.00
1,800.0	13.34	81.62	1,790.4	15.7	106.8	9.7	0.00	0.00	0.00
1,900.0	13.34	81.62	1,887.7	19.1	129.6	11.7	0.00	0.00	0.00
2,000.0	13.34	81.62	1,985.0	22.5	152.5	13.8	0.00	0.00	0.00
2,100.0	13.34	81.62	2,082.3	25.8	175.3	15.9	0.00	0.00	0.00
2,200.0	13.34	81.62	2,179.6	29.2	198.1	17.9	0.00	0.00	0.00
2,300.0	13.34	81.62	2,276.9	32.6	220.9	20.0	0.00	0.00	0.00
2,400.0	13.34	81.62	2,374.2	35.9	243.8	22.1	0.00	0.00	0.00
2,500.0	13.34	81.62	2,471.5	39.3	266.6	24.1	0.00	0.00	0.00
2,600.0	13.34	81.62	2,568.8	42.6	289.4	26.2	0.00	0.00	0.00
2,700.0	13.34	81.62	2,666.1	46.0	312.2	28.3	0.00	0.00	0.00
2,800.0	13.34	81.62	2,763.4	49.4	335.1	30.3	0.00	0.00	0.00
2,900.0	13.34	81.62	2,860.7	52.7	357.9	32.4	0.00	0.00	0.00
3,000.0	13.34	81.62	2,958.0	56.1	380.7	34.5	0.00	0.00	0.00
3,100.0	13.34	81.62	3,055.3	59.5	403.5	36.5	0.00	0.00	0.00
3,200.0	13.34	81.62	3,152.6	62.8	426.3	38.6	0.00	0.00	0.00
3,300.0	13.34	81.62	3,249.9	66.2	449.2	40.7	0.00	0.00	0.00
3,400.0	13.34	81.62	3,347.2	69.5	472.0	42.7	0.00	0.00	0.00
3,500.0	13.34	81.62	3,444.5	72.9	494.8	44.8	0.00	0.00	0.00
3,600.0	13.34	81.62	3,541.9	76.3	517.6	46.8	0.00	0.00	0.00
3,700.0	13.34	81.62	3,639.2	79.6	540.5	48.9	0.00	0.00	0.00
3,800.0	13.34	81.62	3,736.5	83.0	563.3	51.0	0.00	0.00	0.00
3,900.0	13.34	81.62	3,833.8	86.3	586.1	53.0	0.00	0.00	0.00
4,000.0	13.34	81.62	3,931.1	89.7	608.9	55.1	0.00	0.00	0.00
4,100.0	13.34	81.62	4,028.4	93.1	631.7	57.2	0.00	0.00	0.00
4,200.0	13.34	81.62	4,125.7	96.4	654.6	59.2	0.00	0.00	0.00
4,300.0	13.34	81.62	4,223.0	99.8	677.4	61.3	0.00	0.00	0.00
4,400.0	13.34	81.62	4,320.3	103.2	700.2	63.4	0.00	0.00	0.00
4,500.0	13.34	81.62	4,417.6	106.5	723.0	65.4	0.00	0.00	0.00
4,600.0	13.34	81.62	4,514.9	109.9	745.9	67.5	0.00	0.00	0.00
4,700.0	13.34	81.62	4,612.2	113.2	768.7	69.6	0.00	0.00	0.00
4,800.0	13.34	81.62	4,709.5	116.6	791.5	71.6	0.00	0.00	0.00

Database:	Landmark	Local Co-ordinate Reference:	Well SRC Leffler 24-26NHZ
Company:	Synergy Resources	TVD Reference:	WELL @ 4912.0ft (RKB-12')
Project:	SEC.26-T7N-R66W	MD Reference:	WELL @ 4912.0ft (RKB-12')
Site:	SRC Leffler 14-26NHZ Pad Sec.26-T7N-R66W	North Reference:	True
Well:	SRC Leffler 24-26NHZ	Survey Calculation Method:	Minimum Curvature
Wellbore:	Wellbore #1		
Design:	Plan #2 (8-08-13)		

Planned Survey									
Measured Depth (ft)	Inclination (°)	Azimuth (°)	Vertical Depth (ft)	+N/-S (ft)	+E/-W (ft)	Vertical Section (ft)	Dogleg Rate (°/100ft)	Build Rate (°/100ft)	Turn Rate (°/100ft)
4,900.0	13.34	81.62	4,806.8	120.0	814.3	73.7	0.00	0.00	0.00
5,000.0	13.34	81.62	4,904.1	123.3	837.2	75.8	0.00	0.00	0.00
5,100.0	13.34	81.62	5,001.4	126.7	860.0	77.8	0.00	0.00	0.00
5,200.0	13.34	81.62	5,098.7	130.1	882.8	79.9	0.00	0.00	0.00
5,300.0	13.34	81.62	5,196.0	133.4	905.6	82.0	0.00	0.00	0.00
5,400.0	13.34	81.62	5,293.3	136.8	928.4	84.0	0.00	0.00	0.00
5,500.0	13.34	81.62	5,390.6	140.1	951.3	86.1	0.00	0.00	0.00
5,600.0	13.34	81.62	5,487.9	143.5	974.1	88.2	0.00	0.00	0.00
5,700.0	13.34	81.62	5,585.2	146.9	996.9	90.2	0.00	0.00	0.00
5,755.4	13.34	81.62	5,639.1	148.7	1,009.6	91.4	0.00	0.00	0.00
5,800.0	12.45	81.62	5,682.6	150.2	1,019.4	92.3	2.00	-2.00	0.00
5,900.0	10.45	81.62	5,780.6	153.1	1,039.0	94.0	2.00	-2.00	0.00
6,000.0	8.45	81.62	5,879.2	155.5	1,055.3	95.5	2.00	-2.00	0.00
6,100.0	6.45	81.62	5,978.4	157.4	1,068.1	96.7	2.00	-2.00	0.00
6,200.0	4.45	81.62	6,077.9	158.7	1,077.5	97.5	2.00	-2.00	0.00
6,300.0	2.45	81.62	6,177.7	159.6	1,083.4	98.1	2.00	-2.00	0.00
6,400.0	0.45	81.62	6,277.7	160.0	1,085.9	98.3	2.00	-2.00	0.00
6,422.3	0.00	0.00	6,300.0	160.0	1,086.0	98.3	2.00	-2.00	0.00
6,500.0	0.00	0.00	6,377.7	160.0	1,086.0	98.3	0.00	0.00	0.00
6,600.0	0.00	0.00	6,477.7	160.0	1,086.0	98.3	0.00	0.00	0.00
6,616.1	0.00	0.00	6,493.8	160.0	1,086.0	98.3	0.00	0.00	0.00
KOP #2									
6,700.0	6.71	179.68	6,577.5	155.1	1,086.0	103.1	8.00	8.00	0.00
6,800.0	14.71	179.68	6,675.7	136.5	1,086.1	121.1	8.00	8.00	0.00
6,900.0	22.71	179.68	6,770.3	104.5	1,086.3	152.4	8.00	8.00	0.00
7,000.0	30.71	179.68	6,859.6	59.5	1,086.6	196.1	8.00	8.00	0.00
7,100.0	38.71	179.68	6,941.7	2.6	1,086.9	251.5	8.00	8.00	0.00
7,200.0	46.71	179.68	7,015.1	-65.1	1,087.3	317.5	8.00	8.00	0.00
7,300.0	54.71	179.68	7,078.4	-142.5	1,087.7	392.8	8.00	8.00	0.00
7,400.0	62.71	179.68	7,130.3	-227.8	1,088.2	475.9	8.00	8.00	0.00
7,500.0	70.71	179.68	7,169.8	-319.6	1,088.7	565.3	8.00	8.00	0.00
7,600.0	78.71	179.68	7,196.1	-416.0	1,089.2	659.1	8.00	8.00	0.00
7,700.0	86.71	179.68	7,208.8	-515.1	1,089.8	755.6	8.00	8.00	0.00
7,741.1	90.00	179.68	7,210.0	-556.2	1,090.0	795.6	8.00	8.00	0.00
End of Build - 7"									
7,800.0	90.00	179.68	7,210.0	-615.1	1,090.4	852.9	0.00	0.00	0.00
7,900.0	90.00	179.68	7,210.0	-715.1	1,090.9	950.3	0.00	0.00	0.00
8,000.0	90.00	179.68	7,210.0	-815.1	1,091.5	1,047.6	0.00	0.00	0.00
8,100.0	90.00	179.68	7,210.0	-915.1	1,092.0	1,145.0	0.00	0.00	0.00
8,200.0	90.00	179.68	7,210.0	-1,015.1	1,092.6	1,242.4	0.00	0.00	0.00
8,300.0	90.00	179.68	7,210.0	-1,115.1	1,093.2	1,339.7	0.00	0.00	0.00
8,400.0	90.00	179.68	7,210.0	-1,215.1	1,093.7	1,437.1	0.00	0.00	0.00
8,500.0	90.00	179.68	7,210.0	-1,315.1	1,094.3	1,534.4	0.00	0.00	0.00
8,600.0	90.00	179.68	7,210.0	-1,415.1	1,094.8	1,631.8	0.00	0.00	0.00
8,700.0	90.00	179.68	7,210.0	-1,515.1	1,095.4	1,729.2	0.00	0.00	0.00
8,800.0	90.00	179.68	7,210.0	-1,615.1	1,096.0	1,826.5	0.00	0.00	0.00
8,900.0	90.00	179.68	7,210.0	-1,715.1	1,096.5	1,923.9	0.00	0.00	0.00
9,000.0	90.00	179.68	7,210.0	-1,815.1	1,097.1	2,021.2	0.00	0.00	0.00
9,100.0	90.00	179.68	7,210.0	-1,915.1	1,097.6	2,118.6	0.00	0.00	0.00
9,200.0	90.00	179.68	7,210.0	-2,015.1	1,098.2	2,216.0	0.00	0.00	0.00
9,300.0	90.00	179.68	7,210.0	-2,115.1	1,098.8	2,313.3	0.00	0.00	0.00
9,400.0	90.00	179.68	7,210.0	-2,215.1	1,099.3	2,410.7	0.00	0.00	0.00
9,500.0	90.00	179.68	7,210.0	-2,315.1	1,099.9	2,508.0	0.00	0.00	0.00

Database:	Landmark	Local Co-ordinate Reference:	Well SRC Leffler 24-26NHZ
Company:	Synergy Resources	TVD Reference:	WELL @ 4912.0ft (RKB-12')
Project:	SEC.26-T7N-R66W	MD Reference:	WELL @ 4912.0ft (RKB-12')
Site:	SRC Leffler 14-26NHZ Pad Sec.26-T7N-R66W	North Reference:	True
Well:	SRC Leffler 24-26NHZ	Survey Calculation Method:	Minimum Curvature
Wellbore:	Wellbore #1		
Design:	Plan #2 (8-08-13)		

Planned Survey

Measured Depth (ft)	Inclination (°)	Azimuth (°)	Vertical Depth (ft)	+N/-S (ft)	+E/-W (ft)	Vertical Section (ft)	Dogleg Rate (°/100ft)	Build Rate (°/100ft)	Turn Rate (°/100ft)
9,600.0	90.00	179.68	7,210.0	-2,415.1	1,100.5	2,605.4	0.00	0.00	0.00
9,700.0	90.00	179.68	7,210.0	-2,515.1	1,101.0	2,702.7	0.00	0.00	0.00
9,800.0	90.00	179.68	7,210.0	-2,615.1	1,101.6	2,800.1	0.00	0.00	0.00
9,900.0	90.00	179.68	7,210.0	-2,715.1	1,102.1	2,897.5	0.00	0.00	0.00
10,000.0	90.00	179.68	7,210.0	-2,815.1	1,102.7	2,994.8	0.00	0.00	0.00
10,100.0	90.00	179.68	7,210.0	-2,915.1	1,103.3	3,092.2	0.00	0.00	0.00
10,200.0	90.00	179.68	7,210.0	-3,015.1	1,103.8	3,189.5	0.00	0.00	0.00
10,300.0	90.00	179.68	7,210.0	-3,115.1	1,104.4	3,286.9	0.00	0.00	0.00
10,400.0	90.00	179.68	7,210.0	-3,215.1	1,104.9	3,384.3	0.00	0.00	0.00
10,500.0	90.00	179.68	7,210.0	-3,315.0	1,105.5	3,481.6	0.00	0.00	0.00
10,600.0	90.00	179.68	7,210.0	-3,415.0	1,106.1	3,579.0	0.00	0.00	0.00
10,700.0	90.00	179.68	7,210.0	-3,515.0	1,106.6	3,676.3	0.00	0.00	0.00
10,800.0	90.00	179.68	7,210.0	-3,615.0	1,107.2	3,773.7	0.00	0.00	0.00
10,900.0	90.00	179.68	7,210.0	-3,715.0	1,107.8	3,871.1	0.00	0.00	0.00
11,000.0	90.00	179.68	7,210.0	-3,815.0	1,108.3	3,968.4	0.00	0.00	0.00
11,100.0	90.00	179.68	7,210.0	-3,915.0	1,108.9	4,065.8	0.00	0.00	0.00
11,200.0	90.00	179.68	7,210.0	-4,015.0	1,109.4	4,163.1	0.00	0.00	0.00
11,300.0	90.00	179.68	7,210.0	-4,115.0	1,110.0	4,260.5	0.00	0.00	0.00
11,400.0	90.00	179.68	7,210.0	-4,215.0	1,110.6	4,357.9	0.00	0.00	0.00
11,500.0	90.00	179.68	7,210.0	-4,315.0	1,111.1	4,455.2	0.00	0.00	0.00
11,600.0	90.00	179.68	7,210.0	-4,415.0	1,111.7	4,552.6	0.00	0.00	0.00
11,700.0	90.00	179.68	7,210.0	-4,515.0	1,112.2	4,649.9	0.00	0.00	0.00
11,800.0	90.00	179.68	7,210.0	-4,615.0	1,112.8	4,747.3	0.00	0.00	0.00
11,814.1	90.00	179.68	7,210.0	-4,629.1	1,112.9	4,761.0	0.00	0.00	0.00
BHL 460'FSL & 2140'FWL									

Casing Points

Measured Depth (ft)	Vertical Depth (ft)	Name	Casing Diameter (")	Hole Diameter (")
7,741.1	7,210.0	7"	7	7-1/2

Plan Annotations

Measured Depth (ft)	Vertical Depth (ft)	Local Coordinates		Comment
		+N/-S (ft)	+E/-W (ft)	
1,000.0	1,000.0	0.0	0.0	KOP #1
6,616.1	6,493.8	160.0	1,086.0	KOP #2
7,741.1	7,210.0	-556.2	1,090.0	End of Build



Synergy Resources

SEC.26-T7N-R66W

SRC Leffler 14-26NHZ Pad Sec.26-T7N-R66W

SRC Leffler 24-26NHZ

Wellbore #1

Plan #2 (8-08-13)

Anticollision Report

14 August, 2013

Company:	Synergy Resources	Local Co-ordinate Reference:	Well SRC Leffler 24-26NHZ
Project:	SEC.26-T7N-R66W	TVD Reference:	WELL @ 4912.0ft (RKB-12')
Reference Site:	SRC Leffler 14-26NHZ Pad Sec.26-T7N-R66W	MD Reference:	WELL @ 4912.0ft (RKB-12')
Site Error:	0.0ft	North Reference:	True
Reference Well:	SRC Leffler 24-26NHZ	Survey Calculation Method:	Minimum Curvature
Well Error:	0.0ft	Output errors are at	2.00 sigma
Reference Wellbore	Wellbore #1	Database:	Landmark
Reference Design:	Plan #2 (8-08-13)	Offset TVD Reference:	Offset Datum

Offset Design													Offset Site Error:	0.0 ft
Survey Program: 91-MWD													Offset Well Error:	0.0 ft
Reference														
		Offset		Semi Major Axis		Distance								
Measured Depth (ft)	Vertical Depth (ft)	Measured Depth (ft)	Vertical Depth (ft)	Reference (ft)	Offset (ft)	Highside Toolface (°)	Offset Wellbore Centre +N/-S (ft)	+E/-W (ft)	Between Centres (ft)	Between Ellipses (ft)	Minimum Separation (ft)	Separation Factor	Warning	
10,200.0	7,210.0	7,279.0	7,187.4	63.5	24.0	91.75	-3,117.6	926.9	204.6	124.7	79.92	2.560		
10,300.0	7,210.0	7,277.4	7,185.8	65.2	24.0	91.24	-3,117.7	926.8	177.6	95.9	81.74	2.173		
10,301.6	7,210.0	7,277.3	7,185.8	65.3	24.0	91.23	-3,117.7	926.8	177.6	95.8	81.77	2.172 CC, ES, SF		
10,400.0	7,210.0	7,275.7	7,184.2	67.0	24.0	90.71	-3,117.7	926.8	203.0	119.5	83.56	2.430		
10,500.0	7,210.0	7,274.1	7,182.5	68.8	24.0	90.17	-3,117.7	926.8	266.2	180.9	85.37	3.119		
10,600.0	7,210.0	7,272.4	7,180.8	70.6	24.0	89.62	-3,117.8	926.7	347.2	260.0	87.18	3.982		
10,700.0	7,210.0	7,270.6	7,179.1	72.4	24.0	89.06	-3,117.8	926.7	436.1	347.1	88.99	4.901		
10,800.0	7,210.0	7,268.9	7,177.3	74.3	24.0	88.49	-3,117.8	926.6	529.0	438.2	90.79	5.827		
10,900.0	7,210.0	7,267.0	7,175.5	76.1	24.0	87.91	-3,117.8	926.6	624.1	531.5	92.58	6.741		
11,000.0	7,210.0	7,265.2	7,173.6	77.9	24.0	87.31	-3,117.9	926.6	720.5	626.1	94.37	7.635		
11,100.0	7,210.0	7,263.3	7,171.7	79.7	24.0	86.70	-3,117.9	926.5	817.8	721.6	96.14	8.506		
11,200.0	7,210.0	7,261.3	7,169.8	81.6	24.0	86.07	-3,118.0	926.5	915.6	817.7	97.91	9.352		

Company:	Synergy Resources	Local Co-ordinate Reference:	Well SRC Leffler 24-26NHZ
Project:	SEC.26-T7N-R66W	TVD Reference:	WELL @ 4912.0ft (RKB-12')
Reference Site:	SRC Leffler 14-26NHZ Pad Sec.26-T7N-R66W	MD Reference:	WELL @ 4912.0ft (RKB-12')
Site Error:	0.0ft	North Reference:	True
Reference Well:	SRC Leffler 24-26NHZ	Survey Calculation Method:	Minimum Curvature
Well Error:	0.0ft	Output errors are at	2.00 sigma
Reference Wellbore	Wellbore #1	Database:	Landmark
Reference Design:	Plan #2 (8-08-13)	Offset TVD Reference:	Offset Datum

Offset Design												Offset Site Error:	0.0 ft
Survey Program: 548-MWD												Offset Well Error:	0.0 ft
SRC Leffler 13-26D Pad Sec.26-T7N-R66W - SRC Leffler 24-26D - Wellbore #1 - Wellbore #1													
Reference		Offset		Semi Major Axis			Distance						
Measured Depth (ft)	Vertical Depth (ft)	Measured Depth (ft)	Vertical Depth (ft)	Reference (ft)	Offset (ft)	Highside Toolface (°)	Offset Wellbore Centre +N/-S (ft)	+E/-W (ft)	Between Centres (ft)	Between Ellipses (ft)	Minimum Separation (ft)	Separation Factor	Warning
10,600.0	7,210.0	7,324.3	7,201.1	70.6	25.1	95.12	-4,393.3	909.7	997.9	908.8	89.18	11.190	
10,700.0	7,210.0	7,322.7	7,199.5	72.4	25.1	94.67	-4,393.3	909.6	900.3	809.2	91.05	9.888	
10,800.0	7,210.0	7,321.1	7,197.9	74.3	25.1	94.21	-4,393.4	909.6	803.1	710.2	92.92	8.643	
10,900.0	7,210.0	7,319.5	7,196.3	76.1	25.1	93.77	-4,393.4	909.6	706.8	612.0	94.79	7.457	
11,000.0	7,210.0	7,318.0	7,194.8	77.9	25.1	93.33	-4,393.4	909.6	611.7	515.0	96.66	6.328	
11,100.0	7,210.0	7,316.5	7,193.2	79.7	25.1	92.90	-4,393.4	909.5	518.4	419.8	98.53	5.261	
11,200.0	7,210.0	7,315.0	7,191.7	81.6	25.1	92.48	-4,393.4	909.5	428.1	327.7	100.40	4.264	
11,300.0	7,210.0	7,313.5	7,190.3	83.4	25.1	92.06	-4,393.5	909.5	343.2	240.9	102.26	3.356	
11,400.0	7,210.0	7,312.0	7,188.8	85.2	25.1	91.65	-4,393.5	909.5	268.9	164.8	104.13	2.583	
11,500.0	7,210.0	7,310.6	7,187.4	87.1	25.1	91.24	-4,393.5	909.4	216.5	110.5	106.00	2.042	
11,577.4	7,210.0	7,309.5	7,186.3	88.5	25.1	90.93	-4,393.5	909.4	202.2	94.7	107.44	1.882 CC, ES, SF	
11,600.0	7,210.0	7,309.2	7,186.0	88.9	25.1	90.84	-4,393.5	909.4	203.4	95.6	107.86	1.886	
11,700.0	7,210.0	7,307.8	7,184.6	90.8	25.1	90.45	-4,393.5	909.4	236.4	126.7	109.72	2.155	
11,800.0	7,210.0	7,306.4	7,183.2	92.6	25.1	90.06	-4,393.6	909.4	300.7	189.1	111.58	2.695	
11,814.1	7,210.0	7,306.2	7,183.0	92.9	25.1	90.00	-4,393.6	909.4	311.3	199.4	111.84	2.783	

Company:	Synergy Resources	Local Co-ordinate Reference:	Well SRC Leffler 24-26NHZ
Project:	SEC.26-T7N-R66W	TVD Reference:	WELL @ 4912.0ft (RKB-12')
Reference Site:	SRC Leffler 14-26NHZ Pad Sec.26-T7N-R66W	MD Reference:	WELL @ 4912.0ft (RKB-12')
Site Error:	0.0ft	North Reference:	True
Reference Well:	SRC Leffler 24-26NHZ	Survey Calculation Method:	Minimum Curvature
Well Error:	0.0ft	Output errors are at	2.00 sigma
Reference Wellbore	Wellbore #1	Database:	Landmark
Reference Design:	Plan #2 (8-08-13)	Offset TVD Reference:	Offset Datum

Offset Design SRC Leffler 14-26NHZ Pad Sec.26-T7N-R66W - SRC Leffler 13-26NHZ - Wellbore #1 - Plan #2 (8-08-13)													Offset Site Error:	0.0 ft
Survey Program: 0-MWD													Offset Well Error:	0.0 ft
Measured Depth (ft)	Vertical Depth (ft)	Measured Depth (ft)	Vertical Depth (ft)	Reference	Offset	Semi Major Axis	Highside Toolface (°)	Offset Wellbore Centre +N/-S (ft)	Offset Wellbore Centre +E/-W (ft)	Between Centres (ft)	Between Ellipses (ft)	Minimum Separation (ft)	Separation Factor	Warning
0.0	0.0	0.0	0.0	0.0	0.0	-90.94	-90.94	-1.1	-67.2	67.3				
100.0	100.0	100.0	100.0	0.1	0.1	-90.94	-90.94	-1.1	-67.2	67.3	67.0	0.22	299.239	
200.0	200.0	200.0	200.0	0.3	0.3	-90.94	-90.94	-1.1	-67.2	67.3	66.6	0.67	99.746	
300.0	300.0	300.0	300.0	0.6	0.6	-90.94	-90.94	-1.1	-67.2	67.3	66.1	1.12	59.848	
400.0	400.0	400.0	400.0	0.8	0.8	-90.94	-90.94	-1.1	-67.2	67.3	65.7	1.57	42.748	
500.0	500.0	500.0	500.0	1.0	1.0	-90.94	-90.94	-1.1	-67.2	67.3	65.2	2.02	33.249	
600.0	600.0	600.0	600.0	1.2	1.2	-90.94	-90.94	-1.1	-67.2	67.3	64.8	2.47	27.204	
700.0	700.0	700.0	700.0	1.5	1.5	-90.94	-90.94	-1.1	-67.2	67.3	64.3	2.92	23.018	
800.0	800.0	800.0	800.0	1.7	1.7	-90.94	-90.94	-1.1	-67.2	67.3	63.9	3.37	19.949	
900.0	900.0	900.0	900.0	1.9	1.9	-90.94	-90.94	-1.1	-67.2	67.3	63.4	3.82	17.602	
1,000.0	1,000.0	1,000.0	1,000.0	2.1	2.1	-90.94	-90.94	-1.1	-67.2	67.3	63.0	4.27	15.749	CC, ES
1,100.0	1,100.0	1,100.0	1,100.0	2.3	2.4	-172.74	-172.74	-1.1	-67.2	69.0	64.3	4.71	14.656	
1,200.0	1,199.8	1,199.8	1,199.8	2.6	2.6	-173.24	-173.24	-1.1	-67.2	74.2	69.1	5.13	14.456	SF
1,300.0	1,299.5	1,299.5	1,299.5	2.8	2.8	-173.93	-173.93	-1.1	-67.2	82.8	77.3	5.55	14.915	
1,400.0	1,398.7	1,398.7	1,398.7	3.0	3.0	-174.68	-174.68	-1.1	-67.2	95.0	89.0	5.97	15.897	
1,500.0	1,497.5	1,497.5	1,497.5	3.3	3.3	-175.41	-175.41	-1.1	-67.2	110.6	104.2	6.39	17.300	
1,600.0	1,595.6	1,595.6	1,595.6	3.6	3.5	-176.06	-176.06	-1.1	-67.2	129.6	122.8	6.80	19.047	
1,700.0	1,693.1	1,693.1	1,693.1	4.0	3.7	-176.62	-176.62	-1.1	-67.2	151.9	144.6	7.23	21.017	
1,800.0	1,790.4	1,790.4	1,790.4	4.4	3.9	-177.07	-177.07	-1.1	-67.2	174.9	167.2	7.68	22.787	
1,900.0	1,887.7	1,887.7	1,887.7	4.8	4.1	-177.41	-177.41	-1.1	-67.2	197.9	189.8	8.13	24.346	
2,000.0	1,985.0	1,985.0	1,985.0	5.2	4.3	-177.68	-177.68	-1.1	-67.2	221.0	212.4	8.59	25.727	
2,100.0	2,082.3	2,082.3	2,082.3	5.7	4.6	-177.90	-177.90	-1.1	-67.2	244.0	235.0	9.05	26.957	
2,200.0	2,179.6	2,179.6	2,179.6	6.1	4.8	-178.08	-178.08	-1.1	-67.2	267.1	257.6	9.52	28.059	
2,300.0	2,276.9	2,276.9	2,276.9	6.6	5.0	-178.23	-178.23	-1.1	-67.2	290.1	280.2	9.99	29.050	
2,400.0	2,374.2	2,374.2	2,374.2	7.0	5.2	-178.36	-178.36	-1.1	-67.2	313.2	302.7	10.46	29.946	
2,500.0	2,471.5	2,471.5	2,471.5	7.5	5.4	-178.47	-178.47	-1.1	-67.2	336.3	325.3	10.93	30.759	
2,600.0	2,568.8	2,571.7	2,571.7	8.0	5.7	-178.44	-178.44	-0.2	-67.1	359.1	347.6	11.41	31.463	
2,700.0	2,666.1	2,673.4	2,673.2	8.4	5.9	-177.90	-177.90	4.0	-66.2	380.8	368.9	11.89	32.017	
2,800.0	2,763.4	2,775.2	2,774.7	8.9	6.1	-176.92	-176.92	11.8	-64.6	401.6	389.2	12.38	32.436	
2,900.0	2,860.7	2,875.5	2,874.5	9.4	6.4	-175.61	-175.61	22.8	-62.3	421.5	408.6	12.87	32.743	
3,000.0	2,958.0	2,973.1	2,971.3	9.9	6.6	-174.35	-174.35	34.2	-60.0	441.4	428.0	13.37	33.008	
3,100.0	3,055.3	3,070.6	3,068.2	10.4	6.8	-173.19	-173.19	45.7	-57.6	461.5	447.6	13.88	33.243	
3,200.0	3,152.6	3,168.2	3,165.0	10.9	7.0	-172.14	-172.14	57.1	-55.3	481.8	467.4	14.40	33.451	
3,300.0	3,249.9	3,265.7	3,261.9	11.3	7.3	-171.17	-171.17	68.5	-52.9	502.2	487.3	14.93	33.633	
3,400.0	3,347.2	3,363.3	3,358.7	11.8	7.5	-170.27	-170.27	79.9	-50.5	522.8	507.3	15.47	33.793	
3,500.0	3,444.5	3,460.8	3,455.6	12.3	7.8	-169.44	-169.44	91.4	-48.2	543.4	527.4	16.01	33.933	
3,600.0	3,541.9	3,558.4	3,552.4	12.8	8.1	-168.67	-168.67	102.8	-45.8	564.2	547.6	16.57	34.056	
3,700.0	3,639.2	3,655.9	3,649.3	13.3	8.3	-167.96	-167.96	114.2	-43.5	585.0	567.9	17.12	34.164	
3,800.0	3,736.5	3,753.5	3,746.1	13.8	8.6	-167.30	-167.30	125.6	-41.1	606.0	588.3	17.69	34.258	
3,900.0	3,833.8	3,851.0	3,843.0	14.3	8.8	-166.68	-166.68	137.1	-38.8	627.0	608.7	18.26	34.342	
4,000.0	3,931.1	3,946.5	3,937.9	14.8	9.1	-166.21	-166.21	147.1	-36.7	648.2	629.4	18.78	34.515	
4,100.0	4,028.4	4,041.6	4,032.7	15.3	9.3	-166.05	-166.05	154.1	-35.2	669.8	650.5	19.26	34.770	
4,200.0	4,125.7	4,136.6	4,127.7	15.8	9.4	-166.16	-166.16	158.0	-34.4	691.8	672.0	19.72	35.079	
4,300.0	4,223.0	4,232.0	4,223.0	16.3	9.6	-166.52	-166.52	158.9	-34.2	714.1	693.9	20.16	35.426	
4,400.0	4,320.3	4,329.3	4,320.3	16.8	9.8	-166.94	-166.94	158.9	-34.2	736.6	716.0	20.61	35.739	
4,500.0	4,417.6	4,426.6	4,417.6	17.3	10.0	-167.33	-167.33	158.9	-34.2	759.1	738.0	21.08	36.014	
4,600.0	4,514.9	4,523.9	4,514.9	17.7	10.2	-167.70	-167.70	158.9	-34.2	781.6	760.1	21.55	36.276	
4,700.0	4,612.2	4,621.2	4,612.2	18.2	10.4	-168.05	-168.05	158.9	-34.2	804.2	782.2	22.02	36.527	
4,800.0	4,709.5	4,718.5	4,709.5	18.7	10.6	-168.38	-168.38	158.9	-34.2	826.8	804.3	22.49	36.767	
4,900.0	4,806.8	4,815.8	4,806.8	19.2	10.8	-168.70	-168.70	158.9	-34.2	849.5	826.5	22.96	36.997	
5,000.0	4,904.1	4,913.1	4,904.1	19.7	11.0	-168.99	-168.99	158.9	-34.2	872.1	848.7	23.43	37.217	

CC - Min centre to center distance or convergent point, SF - min separation factor, ES - min ellipse separation

Company:	Synergy Resources	Local Co-ordinate Reference:	Well SRC Leffler 24-26NHZ
Project:	SEC.26-T7N-R66W	TVD Reference:	WELL @ 4912.0ft (RKB-12')
Reference Site:	SRC Leffler 14-26NHZ Pad Sec.26-T7N-R66W	MD Reference:	WELL @ 4912.0ft (RKB-12')
Site Error:	0.0ft	North Reference:	True
Reference Well:	SRC Leffler 24-26NHZ	Survey Calculation Method:	Minimum Curvature
Well Error:	0.0ft	Output errors are at	2.00 sigma
Reference Wellbore	Wellbore #1	Database:	Landmark
Reference Design:	Plan #2 (8-08-13)	Offset TVD Reference:	Offset Datum

Offset Design SRC Leffler 14-26NHZ Pad Sec.26-T7N-R66W - SRC Leffler 13-26NHZ - Wellbore #1 - Plan #2 (8-08-1												Offset Site Error:	0.0 ft
Survey Program: 0-MWD												Offset Well Error:	0.0 ft
Measured Depth (ft)	Vertical Depth (ft)	Measured Depth (ft)	Vertical Depth (ft)	Semi Major Axis Reference (ft)	Offset (ft)	Highside Toolface (°)	Offset Wellbore Centre +N/-S (ft)	+E/-W (ft)	Between Centres (ft)	Between Ellipses (ft)	Minimum Separation (ft)	Separation Factor	Warning
5,100.0	5,001.4	5,010.4	5,001.4	20.2	11.3	-169.27	158.9	-34.2	894.8	870.9	23.91	37.428	
5,200.0	5,098.7	5,107.7	5,098.7	20.7	11.5	-169.54	158.9	-34.2	917.5	893.1	24.38	37.630	
5,300.0	5,196.0	5,205.0	5,196.0	21.2	11.7	-169.80	158.9	-34.2	940.2	915.4	24.86	37.824	
5,400.0	5,293.3	5,302.3	5,293.3	21.7	11.9	-170.04	158.9	-34.2	962.9	937.6	25.33	38.011	
5,500.0	5,390.6	5,399.6	5,390.6	22.2	12.1	-170.27	158.9	-34.2	985.7	959.9	25.81	38.190	

Company:	Synergy Resources	Local Co-ordinate Reference:	Well SRC Leffler 24-26NHZ
Project:	SEC.26-T7N-R66W	TVD Reference:	WELL @ 4912.0ft (RKB-12')
Reference Site:	SRC Leffler 14-26NHZ Pad Sec.26-T7N-R66W	MD Reference:	WELL @ 4912.0ft (RKB-12')
Site Error:	0.0ft	North Reference:	True
Reference Well:	SRC Leffler 24-26NHZ	Survey Calculation Method:	Minimum Curvature
Well Error:	0.0ft	Output errors are at	2.00 sigma
Reference Wellbore	Wellbore #1	Database:	Landmark
Reference Design:	Plan #2 (8-08-13)	Offset TVD Reference:	Offset Datum

Offset Design													Offset Site Error:	0.0 ft
Survey Program: 0-MWD													Offset Well Error:	0.0 ft
Measured Depth (ft)	Vertical Depth (ft)	Measured Depth (ft)	Vertical Depth (ft)	Semi Major Axis Reference (ft)	Semi Major Axis Offset (ft)	Highside Toolface (°)	Offset Wellbore Centre +N/-S (ft)	Offset Wellbore Centre +E/-W (ft)	Between Centres (ft)	Between Ellipses (ft)	Minimum Separation (ft)	Separation Factor	Warning	
0.0	0.0	0.0	0.0	0.0	0.0	-90.96	-1.5	-89.8	89.8					
100.0	100.0	100.0	100.0	0.1	0.1	-90.96	-1.5	-89.8	89.8	89.5	0.22	399.399		
200.0	200.0	200.0	200.0	0.3	0.3	-90.96	-1.5	-89.8	89.8	89.1	0.67	133.133		
300.0	300.0	300.0	300.0	0.6	0.6	-90.96	-1.5	-89.8	89.8	88.6	1.12	79.880		
400.0	400.0	400.0	400.0	0.8	0.8	-90.96	-1.5	-89.8	89.8	88.2	1.57	57.057 CC		
500.0	500.0	499.3	499.3	1.0	1.0	-90.86	-1.4	-90.2	90.2	88.2	2.01	44.803 ES		
600.0	600.0	598.5	598.5	1.2	1.2	-90.58	-0.9	-91.4	91.4	88.9	2.45	37.323		
700.0	700.0	697.7	697.7	1.5	1.4	-90.13	-0.2	-93.4	93.4	90.5	2.89	32.333		
800.0	800.0	796.9	796.8	1.7	1.6	-89.53	0.8	-96.2	96.3	93.0	3.33	28.876		
900.0	900.0	896.0	895.9	1.9	1.9	-88.81	2.1	-99.9	100.0	96.2	3.78	26.425		
1,000.0	1,000.0	995.1	994.8	2.1	2.1	-88.00	3.6	-104.3	104.5	100.3	4.24	24.667		
1,100.0	1,100.0	1,093.9	1,093.5	2.3	2.3	-168.90	5.5	-109.6	111.6	107.0	4.65	23.981 SF		
1,200.0	1,199.8	1,192.3	1,191.7	2.6	2.6	-168.46	7.6	-115.6	122.9	117.9	5.08	24.209		
1,300.0	1,299.5	1,290.0	1,289.1	2.8	2.8	-168.27	10.0	-122.3	138.5	133.0	5.50	25.174		
1,400.0	1,398.7	1,386.9	1,385.6	3.0	3.1	-168.26	12.6	-129.8	158.2	152.2	5.92	26.718		
1,500.0	1,497.5	1,482.6	1,481.0	3.3	3.3	-168.37	15.5	-138.0	182.0	175.7	6.34	28.725		
1,600.0	1,595.6	1,577.1	1,575.0	3.6	3.6	-168.55	18.6	-146.7	209.9	203.1	6.75	31.105		
1,700.0	1,693.1	1,670.1	1,667.5	4.0	3.8	-168.78	21.9	-156.1	241.6	234.5	7.17	33.713		
1,800.0	1,790.4	1,762.5	1,759.3	4.4	4.1	-169.02	25.4	-166.1	274.8	267.2	7.62	36.084		
1,900.0	1,887.7	1,854.3	1,850.4	4.8	4.4	-169.15	29.1	-176.7	308.8	300.7	8.07	38.264		
2,000.0	1,985.0	1,945.7	1,941.1	5.2	4.6	-169.23	33.1	-187.9	343.4	334.9	8.53	40.266		
2,100.0	2,082.3	2,039.4	2,033.9	5.7	4.9	-169.27	37.3	-199.8	378.4	369.4	9.00	42.064		
2,200.0	2,179.6	2,133.1	2,126.7	6.1	5.2	-169.31	41.5	-211.6	413.3	403.9	9.47	43.668		
2,300.0	2,276.9	2,226.8	2,219.6	6.6	5.5	-169.34	45.6	-223.5	448.3	438.4	9.94	45.103		
2,400.0	2,374.2	2,320.5	2,312.4	7.0	5.8	-169.36	49.8	-235.4	483.3	472.9	10.42	46.392		
2,500.0	2,471.5	2,414.2	2,405.3	7.5	6.1	-169.38	54.0	-247.2	518.3	507.4	10.90	47.556		
2,600.0	2,568.8	2,507.9	2,498.1	8.0	6.4	-169.40	58.2	-259.1	553.2	541.8	11.38	48.610		
2,700.0	2,666.1	2,601.5	2,590.9	8.4	6.7	-169.42	62.3	-270.9	588.2	576.3	11.87	49.569		
2,800.0	2,763.4	2,695.2	2,683.8	8.9	7.0	-169.44	66.5	-282.8	623.2	610.8	12.35	50.445		
2,900.0	2,860.7	2,788.9	2,776.6	9.4	7.3	-169.45	70.7	-294.6	658.1	645.3	12.84	51.247		
3,000.0	2,958.0	2,882.6	2,869.5	9.9	7.7	-169.46	74.9	-306.5	693.1	679.8	13.33	51.984		
3,100.0	3,055.3	2,976.3	2,962.3	10.4	8.0	-169.47	79.1	-318.3	728.1	714.3	13.83	52.663		
3,200.0	3,152.6	3,070.0	3,055.1	10.9	8.3	-169.48	83.2	-330.2	763.1	748.7	14.32	53.292		
3,300.0	3,249.9	3,163.7	3,148.0	11.3	8.6	-169.49	87.4	-342.0	798.0	783.2	14.81	53.874		
3,400.0	3,347.2	3,257.3	3,240.8	11.8	8.9	-169.50	91.6	-353.9	833.0	817.7	15.31	54.415		
3,500.0	3,444.5	3,351.0	3,333.6	12.3	9.2	-169.51	95.8	-365.7	868.0	852.2	15.80	54.918		
3,600.0	3,541.9	3,444.7	3,426.5	12.8	9.5	-169.52	99.9	-377.6	902.9	886.6	16.30	55.388		
3,700.0	3,639.2	3,538.4	3,519.3	13.3	9.8	-169.52	104.1	-389.5	937.9	921.1	16.80	55.828		
3,800.0	3,736.5	3,632.1	3,612.2	13.8	10.1	-169.53	108.3	-401.3	972.9	955.6	17.30	56.240		

SRC Leffler 14-26NHZ Pad Sec.26-T7N-R66W - SRC Leffler 23-26NHZ - Wellbore #1 - Plan #2 (8-08-1)													Offset Site Error:	0.0 ft
Survey Program: 0-MWD													Offset Well Error:	0.0 ft
Reference		Offset		Semi Major Axis			Distance		Between		Minimum	Separation	Warning	
Measured Depth (ft)	Vertical Depth (ft)	Measured Depth (ft)	Vertical Depth (ft)	Reference (ft)	Offset (ft)	Highside Toolface (°)	Offset Wellbore Centre +N/-S (ft)	+E/-W (ft)	Centres (ft)	Ellipses (ft)	Separation (ft)	Factor		
0.0	0.0	0.0	0.0	0.0	0.0	-91.02	-0.4	-22.2	22.2					
100.0	100.0	100.0	100.0	0.1	0.1	-91.02	-0.4	-22.2	22.2	22.0	0.22	98.924		
200.0	200.0	200.0	200.0	0.3	0.3	-91.02	-0.4	-22.2	22.2	21.6	0.67	32.975		
300.0	300.0	300.0	300.0	0.6	0.6	-91.02	-0.4	-22.2	22.2	21.1	1.12	19.785		
400.0	400.0	400.0	400.0	0.8	0.8	-91.02	-0.4	-22.2	22.2	20.7	1.57	14.132		
500.0	500.0	500.0	500.0	1.0	1.0	-91.02	-0.4	-22.2	22.2	20.2	2.02	10.992		
600.0	600.0	600.0	600.0	1.2	1.2	-91.02	-0.4	-22.2	22.2	19.8	2.47	8.993		
700.0	700.0	700.0	700.0	1.5	1.5	-91.02	-0.4	-22.2	22.2	19.3	2.92	7.610		
800.0	800.0	800.0	800.0	1.7	1.7	-91.02	-0.4	-22.2	22.2	18.9	3.37	6.595		
900.0	900.0	900.0	900.0	1.9	1.9	-91.02	-0.4	-22.2	22.2	18.4	3.82	5.819		
1,000.0	1,000.0	1,000.0	1,000.0	2.1	2.1	-91.02	-0.4	-22.2	22.2	18.0	4.27	5.207 CC, ES		
1,100.0	1,100.0	1,100.0	1,100.0	2.3	2.4	-173.17	-0.4	-22.2	24.0	19.3	4.71	5.091		
1,200.0	1,199.8	1,199.8	1,199.8	2.6	2.6	-174.38	-0.4	-22.2	29.2	24.0	5.13	5.684		
1,300.0	1,299.5	1,300.7	1,300.7	2.8	2.8	-175.14	0.1	-20.5	36.1	30.6	5.54	6.518		
1,400.0	1,398.7	1,401.8	1,401.7	3.0	3.0	-175.11	1.4	-15.4	43.1	37.2	5.94	7.256		
1,500.0	1,497.5	1,503.2	1,502.6	3.3	3.2	-174.62	3.7	-6.7	50.1	43.8	6.35	7.900		
1,600.0	1,595.6	1,604.8	1,603.5	3.6	3.5	-173.83	7.0	5.4	57.2	50.4	6.75	8.465		
1,700.0	1,693.1	1,706.7	1,704.0	4.0	3.8	-172.82	11.2	20.9	64.0	56.8	7.18	8.915		
1,800.0	1,790.4	1,808.8	1,804.2	4.4	4.1	-171.35	16.3	40.0	68.2	60.6	7.65	8.914		
1,900.0	1,887.7	1,908.7	1,901.9	4.8	4.4	-169.72	21.7	60.2	70.9	62.8	8.14	8.710		
2,000.0	1,985.0	2,008.6	1,999.6	5.2	4.8	-168.21	27.1	80.4	73.7	65.0	8.65	8.516		
2,100.0	2,082.3	2,108.6	2,097.4	5.7	5.1	-166.80	32.5	100.6	76.5	67.3	9.18	8.335		
2,200.0	2,179.6	2,208.5	2,195.1	6.1	5.5	-165.50	37.9	120.8	79.3	69.6	9.72	8.163		
2,300.0	2,276.9	2,308.5	2,292.8	6.6	5.9	-164.29	43.3	141.0	82.2	72.0	10.28	7.999		
2,400.0	2,374.2	2,408.4	2,390.6	7.0	6.3	-163.16	48.7	161.2	85.2	74.3	10.85	7.845		
2,500.0	2,471.5	2,508.4	2,488.3	7.5	6.8	-162.10	54.1	181.4	88.1	76.7	11.44	7.699		
2,600.0	2,568.8	2,608.3	2,586.0	8.0	7.2	-161.12	59.5	201.6	91.1	79.0	12.05	7.561		
2,700.0	2,666.1	2,708.2	2,683.8	8.4	7.6	-160.19	64.9	221.8	94.1	81.4	12.66	7.430		
2,800.0	2,763.4	2,808.2	2,781.5	8.9	8.0	-159.33	70.3	242.0	97.1	83.8	13.29	7.307		
2,900.0	2,860.7	2,908.1	2,879.2	9.4	8.5	-158.51	75.7	262.1	100.2	86.2	13.93	7.191		
3,000.0	2,958.0	3,008.1	2,977.0	9.9	8.9	-157.75	81.1	282.3	103.2	88.7	14.58	7.081		
3,100.0	3,055.3	3,108.0	3,074.7	10.4	9.3	-157.03	86.5	302.5	106.3	91.1	15.24	6.977		
3,200.0	3,152.6	3,208.0	3,172.4	10.9	9.8	-156.35	91.9	322.7	109.4	93.5	15.91	6.879		
3,300.0	3,249.9	3,307.9	3,270.2	11.3	10.2	-155.70	97.3	342.9	112.5	96.0	16.58	6.787		
3,400.0	3,347.2	3,407.8	3,367.9	11.8	10.7	-155.10	102.7	363.1	115.7	98.4	17.26	6.700		
3,500.0	3,444.5	3,507.8	3,465.6	12.3	11.1	-154.52	108.1	383.3	118.8	100.9	17.95	6.617		
3,600.0	3,541.9	3,607.7	3,563.4	12.8	11.5	-153.97	113.5	403.5	122.0	103.3	18.65	6.539		
3,700.0	3,639.2	3,707.7	3,661.1	13.3	12.0	-153.46	118.9	423.7	125.1	105.8	19.35	6.465		
3,800.0	3,736.5	3,807.6	3,758.8	13.8	12.4	-152.96	124.3	443.9	128.3	108.2	20.06	6.396		
3,900.0	3,833.8	3,907.6	3,856.6	14.3	12.9	-152.49	129.7	464.1	131.5	110.7	20.77	6.329		
4,000.0	3,931.1	4,007.5	3,954.3	14.8	13.3	-152.05	135.1	484.3	134.7	113.2	21.49	6.267		
4,100.0	4,028.4	4,107.5	4,052.0	15.3	13.8	-151.62	140.5	504.5	137.9	115.7	22.21	6.207		
4,200.0	4,125.7	4,205.5	4,148.0	15.8	14.2	-151.32	145.7	523.9	141.4	118.5	22.90	6.176		
4,300.0	4,223.0	4,300.0	4,241.0	16.3	14.5	-151.66	150.0	540.0	147.4	124.0	23.42	6.293		
4,400.0	4,320.3	4,396.7	4,336.7	16.8	14.8	-152.66	153.6	553.4	156.1	132.3	23.81	6.555		
4,500.0	4,417.6	4,491.5	4,430.9	17.3	15.0	-154.13	156.3	563.5	167.6	143.5	24.09	6.957		
4,600.0	4,514.9	4,585.4	4,524.5	17.7	15.2	-155.91	158.2	570.6	182.1	157.8	24.30	7.493		
4,700.0	4,612.2	4,678.2	4,617.3	18.2	15.3	-157.86	159.3	574.6	199.5	175.1	24.46	8.157		
4,800.0	4,709.5	4,770.5	4,709.5	18.7	15.5	-159.85	159.6	575.8	220.0	195.4	24.61	8.939		
4,900.0	4,806.8	4,867.8	4,806.8	19.2	15.6	-161.73	159.6	575.8	241.8	217.0	24.80	9.752		
5,000.0	4,904.1	4,965.1	4,904.1	19.7	15.7	-163.29	159.6	575.8	263.9	238.8	25.05	10.536		

COMPASS 2003.21 Build 46

Company:	Synergy Resources	Local Co-ordinate Reference:	Well SRC Leffler 24-26NHZ
Project:	SEC.26-T7N-R66W	TVD Reference:	WELL @ 4912.0ft (RKB-12')
Reference Site:	SRC Leffler 14-26NHZ Pad Sec.26-T7N-R66W	MD Reference:	WELL @ 4912.0ft (RKB-12')
Site Error:	0.0ft	North Reference:	True
Reference Well:	SRC Leffler 24-26NHZ	Survey Calculation Method:	Minimum Curvature
Well Error:	0.0ft	Output errors are at	2.00 sigma
Reference Wellbore	Wellbore #1	Database:	Landmark
Reference Design:	Plan #2 (8-08-13)	Offset TVD Reference:	Offset Datum

Offset Design													Offset Site Error:	0.0 ft
Survey Program: 0-MWD													Offset Well Error:	0.0 ft
Measured Depth (ft)	Vertical Depth (ft)	Measured Depth (ft)	Vertical Depth (ft)	Reference	Offset	Semi Major Axis	Highside Toolface (°)	Offset Wellbore Centre +N/-S (ft)	Offset Wellbore Centre +E/-W (ft)	Between Centres (ft)	Between Ellipses (ft)	Minimum Separation (ft)	Separation Factor	Warning
5,100.0	5,001.4	5,062.4	5,001.4	20.2	15.9	-164.62		159.6	575.8	286.1	260.8	25.34	11.291	
5,200.0	5,098.7	5,159.7	5,098.7	20.7	16.0	-165.75		159.6	575.8	308.4	282.8	25.66	12.020	
5,300.0	5,196.0	5,257.0	5,196.0	21.2	16.2	-166.74		159.6	575.8	330.9	304.9	26.01	12.721	
5,400.0	5,293.3	5,354.3	5,293.3	21.7	16.3	-167.59		159.6	575.8	353.4	327.0	26.38	13.397	
5,500.0	5,390.6	5,451.6	5,390.6	22.2	16.5	-168.35		159.6	575.8	376.0	349.2	26.77	14.048	
5,600.0	5,487.9	5,548.9	5,487.9	22.7	16.6	-169.02		159.6	575.8	398.6	371.5	27.16	14.675	
5,700.0	5,585.2	5,646.2	5,585.2	23.2	16.8	-169.61		159.6	575.8	421.3	393.8	27.57	15.280	
5,800.0	5,682.6	5,743.6	5,682.6	23.7	16.9	-170.18		159.6	575.8	443.7	415.7	28.00	15.846	
5,900.0	5,780.6	5,841.6	5,780.6	24.0	17.1	-170.66		159.6	575.8	463.3	434.9	28.41	16.307	
6,000.0	5,879.2	5,940.2	5,879.2	24.3	17.3	-171.03		159.6	575.8	479.5	450.7	28.80	16.652	
6,100.0	5,978.4	6,039.4	5,978.4	24.6	17.4	-171.30		159.6	575.8	492.3	463.2	29.15	16.887	
6,200.0	6,077.9	6,138.9	6,077.9	24.8	17.6	-171.50		159.6	575.8	501.7	472.2	29.48	17.019	
6,300.0	6,177.7	6,238.7	6,177.7	25.0	17.7	-171.61		159.6	575.8	507.6	477.9	29.77	17.051	
6,400.0	6,277.7	6,338.7	6,277.7	25.1	17.9	-171.66		159.6	575.8	510.1	480.1	30.03	16.986	
6,500.0	6,377.7	6,438.7	6,377.7	25.2	18.1	-90.04		159.6	575.8	510.2	479.8	30.41	16.779	
6,600.0	6,477.7	6,538.7	6,477.7	25.3	18.3	-90.04		159.6	575.8	510.2	479.4	30.79	16.571	
6,700.0	6,577.5	6,639.0	6,577.9	25.4	18.4	90.52		156.8	575.8	510.2	479.1	31.12	16.395	
6,800.0	6,675.7	6,739.8	6,677.4	25.5	18.5	90.84		140.9	575.9	510.3	478.9	31.39	16.256	
6,900.0	6,770.3	6,841.0	6,774.0	25.6	18.6	91.14		111.1	576.0	510.3	478.7	31.60	16.152	
7,000.0	6,859.6	6,942.6	6,865.8	25.6	18.7	91.42		67.7	576.3	510.4	478.6	31.79	16.056	
7,100.0	6,941.7	7,044.5	6,950.8	25.7	18.7	91.67		11.6	576.6	510.4	478.4	32.04	15.933	
7,200.0	7,015.1	7,146.8	7,027.2	25.8	18.9	91.89		-56.2	577.0	510.5	478.1	32.43	15.739	
7,300.0	7,078.4	7,249.3	7,093.4	25.9	19.0	92.08		-134.4	577.4	510.6	477.5	33.07	15.439	
7,400.0	7,130.3	7,352.1	7,147.8	26.1	19.3	92.22		-221.5	577.9	510.6	476.6	34.02	15.010	
7,500.0	7,169.8	7,455.0	7,189.2	26.4	19.7	92.31		-315.6	578.5	510.6	475.3	35.33	14.453	
7,600.0	7,196.1	7,558.0	7,216.8	26.9	20.4	92.37		-414.7	579.0	510.6	473.6	37.01	13.797	
7,700.0	7,208.8	7,661.0	7,229.9	27.4	21.2	92.37		-516.8	579.6	510.6	471.6	39.02	13.085	
7,800.0	7,210.0	7,762.2	7,231.0	28.1	22.2	92.36		-618.0	580.2	510.6	469.4	41.25	12.378	
7,900.0	7,210.0	7,862.2	7,231.0	28.9	23.2	92.36		-718.0	580.7	510.6	467.0	43.66	11.696	
8,000.0	7,210.0	7,962.2	7,231.0	29.8	24.4	92.36		-818.0	581.3	510.6	464.4	46.26	11.039	
8,100.0	7,210.0	8,062.2	7,231.0	30.8	25.7	92.36		-918.0	581.9	510.6	461.6	49.02	10.416	
8,200.0	7,210.0	8,162.2	7,231.0	32.0	27.1	92.36		-1,018.0	582.4	510.6	458.7	51.92	9.834	
8,300.0	7,210.0	8,262.2	7,231.0	33.1	28.6	92.36		-1,118.0	583.0	510.6	455.7	54.94	9.294	
8,400.0	7,210.0	8,362.2	7,231.0	34.4	30.1	92.36		-1,218.0	583.6	510.6	452.5	58.06	8.795	
8,500.0	7,210.0	8,462.2	7,231.0	35.8	31.6	92.36		-1,318.0	584.1	510.6	449.3	61.26	8.335	
8,600.0	7,210.0	8,562.2	7,231.0	37.1	33.2	92.36		-1,418.0	584.7	510.6	446.1	64.53	7.912	
8,700.0	7,210.0	8,662.2	7,231.0	38.6	34.8	92.36		-1,518.0	585.2	510.6	442.7	67.86	7.524	
8,800.0	7,210.0	8,762.2	7,231.0	40.1	36.4	92.36		-1,618.0	585.8	510.6	439.3	71.25	7.166	
8,900.0	7,210.0	8,862.2	7,231.0	41.6	38.1	92.36		-1,718.0	586.4	510.6	435.9	74.68	6.837	
9,000.0	7,210.0	8,962.2	7,231.0	43.1	39.8	92.36		-1,818.0	586.9	510.6	432.4	78.15	6.534	
9,100.0	7,210.0	9,062.2	7,231.0	44.7	41.5	92.36		-1,918.0	587.5	510.6	428.9	81.65	6.253	
9,200.0	7,210.0	9,162.2	7,231.0	46.3	43.3	92.36		-2,018.0	588.1	510.6	425.4	85.18	5.994	
9,300.0	7,210.0	9,262.2	7,231.0	48.0	45.0	92.36		-2,117.9	588.6	510.6	421.8	88.74	5.754	
9,400.0	7,210.0	9,362.2	7,231.0	49.6	46.8	92.36		-2,217.9	589.2	510.6	418.3	92.32	5.530	
9,500.0	7,210.0	9,462.2	7,231.0	51.3	48.6	92.36		-2,317.9	589.8	510.6	414.6	95.93	5.323	
9,600.0	7,210.0	9,562.2	7,231.0	53.0	50.3	92.36		-2,417.9	590.3	510.6	411.0	99.55	5.129	
9,700.0	7,210.0	9,662.2	7,231.0	54.7	52.1	92.36		-2,517.9	590.9	510.6	407.4	103.19	4.948	
9,800.0	7,210.0	9,762.2	7,231.0	56.5	53.9	92.36		-2,617.9	591.5	510.6	403.7	106.84	4.779	
9,900.0	7,210.0	9,862.2	7,231.0	58.2	55.8	92.36		-2,717.9	592.0	510.6	400.1	110.50	4.620	
10,000.0	7,210.0	9,962.2	7,231.0	59.9	57.6	92.36		-2,817.9	592.6	510.6	396.4	114.18	4.471	
10,100.0	7,210.0	10,062.2	7,231.0	61.7	59.4	92.36		-2,917.9	593.2	510.5	392.7	117.87	4.331	

CC - Min centre to center distance or convergent point, SF - min separation factor, ES - min ellipse separation

Company:	Synergy Resources	Local Co-ordinate Reference:	Well SRC Leffler 24-26NHZ
Project:	SEC.26-T7N-R66W	TVD Reference:	WELL @ 4912.0ft (RKB-12')
Reference Site:	SRC Leffler 14-26NHZ Pad Sec.26-T7N-R66W	MD Reference:	WELL @ 4912.0ft (RKB-12')
Site Error:	0.0ft	North Reference:	True
Reference Well:	SRC Leffler 24-26NHZ	Survey Calculation Method:	Minimum Curvature
Well Error:	0.0ft	Output errors are at	2.00 sigma
Reference Wellbore	Wellbore #1	Database:	Landmark
Reference Design:	Plan #2 (8-08-13)	Offset TVD Reference:	Offset Datum

Offset Design SRC Leffler 14-26NHZ Pad Sec.26-T7N-R66W - SRC Leffler 23-26NHZ - Wellbore #1 - Plan #2 (8-08-1												Offset Site Error:	0.0 ft
Survey Program: 0-MWD												Offset Well Error:	0.0 ft
Measured Depth (ft)	Vertical Depth (ft)	Measured Depth (ft)	Vertical Depth (ft)	Reference	Offset	Highside Toolface (°)	Offset Wellbore Centre +N/-S (ft)	+E/-W (ft)	Between Centres (ft)	Between Ellipses (ft)	Minimum Separation (ft)	Separation Factor	Warning
10,200.0	7,210.0	10,162.2	7,231.0	63.5	61.2	92.36	-3,017.9	593.7	510.5	389.0	121.57	4.200	
10,300.0	7,210.0	10,262.2	7,231.0	65.2	63.1	92.36	-3,117.9	594.3	510.5	385.3	125.28	4.075	
10,400.0	7,210.0	10,362.2	7,231.0	67.0	64.9	92.36	-3,217.9	594.8	510.5	381.5	128.99	3.958	
10,500.0	7,210.0	10,462.2	7,231.0	68.8	66.8	92.36	-3,317.9	595.4	510.5	377.8	132.72	3.847	
10,600.0	7,210.0	10,562.2	7,231.0	70.6	68.6	92.36	-3,417.9	596.0	510.5	374.1	136.45	3.742	
10,700.0	7,210.0	10,662.2	7,231.0	72.4	70.5	92.36	-3,517.9	596.5	510.5	370.3	140.19	3.642	
10,800.0	7,210.0	10,762.2	7,231.0	74.3	72.3	92.36	-3,617.9	597.1	510.5	366.6	143.93	3.547	
10,900.0	7,210.0	10,862.2	7,231.0	76.1	74.2	92.36	-3,717.9	597.7	510.5	362.8	147.68	3.457	
11,000.0	7,210.0	10,962.2	7,231.0	77.9	76.1	92.36	-3,817.9	598.2	510.5	359.1	151.43	3.371	
11,100.0	7,210.0	11,062.2	7,231.0	79.7	77.9	92.36	-3,917.9	598.8	510.5	355.3	155.19	3.290	
11,200.0	7,210.0	11,162.2	7,231.0	81.6	79.8	92.36	-4,017.9	599.4	510.5	351.6	158.95	3.212	
11,300.0	7,210.0	11,262.2	7,231.0	83.4	81.7	92.36	-4,117.9	599.9	510.5	347.8	162.72	3.137	
11,400.0	7,210.0	11,362.2	7,231.0	85.2	83.6	92.36	-4,217.9	600.5	510.5	344.0	166.49	3.066	
11,500.0	7,210.0	11,462.2	7,231.0	87.1	85.4	92.36	-4,317.9	601.1	510.5	340.2	170.26	2.998	
11,600.0	7,210.0	11,562.2	7,231.0	88.9	87.3	92.36	-4,417.9	601.6	510.5	336.5	174.04	2.933	
11,700.0	7,210.0	11,662.2	7,231.0	90.8	89.2	92.36	-4,517.9	602.2	510.5	332.7	177.82	2.871	
11,800.0	7,210.0	11,762.2	7,231.0	92.6	91.1	92.36	-4,617.9	602.8	510.5	328.9	181.61	2.811	
11,814.1	7,210.0	11,776.3	7,231.0	92.9	91.4	92.36	-4,632.0	602.8	510.5	328.4	182.14	2.803 SF	

Company:	Synergy Resources	Local Co-ordinate Reference:	Well SRC Leffler 24-26NHZ
Project:	SEC.26-T7N-R66W	TVD Reference:	WELL @ 4912.0ft (RKB-12')
Reference Site:	SRC Leffler 14-26NHZ Pad Sec.26-T7N-R66W	MD Reference:	WELL @ 4912.0ft (RKB-12')
Site Error:	0.0ft	North Reference:	True
Reference Well:	SRC Leffler 24-26NHZ	Survey Calculation Method:	Minimum Curvature
Well Error:	0.0ft	Output errors are at	2.00 sigma
Reference Wellbore	Wellbore #1	Database:	Landmark
Reference Design:	Plan #2 (8-08-13)	Offset TVD Reference:	Offset Datum

Offset Design SRC Leffler 14-26NHZ Pad Sec.26-T7N-R66W - SRC Leffler B-26CHZ - Wellbore #1 - Plan #2 (8-08-13)													Offset Site Error:	0.0 ft
Survey Program: 0-MWD													Offset Well Error:	0.0 ft
Measured Depth (ft)	Vertical Depth (ft)	Measured Depth (ft)	Vertical Depth (ft)	Reference	Offset	Semi Major Axis	Highside Toolface (°)	Offset Wellbore Centre +N/-S (ft)	Offset Wellbore Centre +E/-W (ft)	Between Centres (ft)	Between Ellipses (ft)	Minimum Separation (ft)	Separation Factor	Warning
0.0	0.0	0.0	0.0	0.0	0.0	-91.02	-91.02	-0.8	-44.7	44.7				
100.0	100.0	100.0	100.0	0.1	0.1	-91.02	-91.02	-0.8	-44.7	44.7	44.5	0.22	199.085	
200.0	200.0	200.0	200.0	0.3	0.3	-91.02	-91.02	-0.8	-44.7	44.7	44.1	0.67	66.362	
300.0	300.0	300.0	300.0	0.6	0.6	-91.02	-91.02	-0.8	-44.7	44.7	43.6	1.12	39.817	
400.0	400.0	400.0	400.0	0.8	0.8	-91.02	-91.02	-0.8	-44.7	44.7	43.2	1.57	28.441	
500.0	500.0	500.0	500.0	1.0	1.0	-91.02	-91.02	-0.8	-44.7	44.7	42.7	2.02	22.121	
600.0	600.0	600.0	600.0	1.2	1.2	-91.02	-91.02	-0.8	-44.7	44.7	42.3	2.47	18.099	
700.0	700.0	700.0	700.0	1.5	1.5	-91.02	-91.02	-0.8	-44.7	44.7	41.8	2.92	15.314	
800.0	800.0	800.0	800.0	1.7	1.7	-91.02	-91.02	-0.8	-44.7	44.7	41.4	3.37	13.272	
900.0	900.0	900.0	900.0	1.9	1.9	-91.02	-91.02	-0.8	-44.7	44.7	40.9	3.82	11.711	
1,000.0	1,000.0	1,000.0	1,000.0	2.1	2.1	-91.02	-91.02	-0.8	-44.7	44.7	40.5	4.27	10.478 CC, ES	
1,100.0	1,100.0	1,100.0	1,100.0	2.3	2.4	-172.91	-172.91	-0.8	-44.7	46.5	41.8	4.71	9.874	
1,200.0	1,199.8	1,199.8	1,199.8	2.6	2.6	-173.61	-173.61	-0.8	-44.7	51.7	46.5	5.13	10.070	
1,300.0	1,299.5	1,299.5	1,299.5	2.8	2.8	-174.52	-174.52	-0.8	-44.7	60.3	54.8	5.55	10.865	
1,400.0	1,398.7	1,398.7	1,398.7	3.0	3.0	-175.42	-175.42	-0.8	-44.7	72.5	66.5	5.97	12.133	
1,500.0	1,497.5	1,500.3	1,500.3	3.3	3.3	-175.78	-175.78	0.0	-43.2	86.5	80.1	6.39	13.549	
1,600.0	1,595.6	1,602.3	1,602.1	3.6	3.5	-175.38	-175.38	2.5	-38.4	100.8	94.0	6.79	14.848	
1,700.0	1,693.1	1,704.8	1,704.2	4.0	3.7	-174.48	-174.48	6.6	-30.3	115.0	107.8	7.20	15.971	
1,800.0	1,790.4	1,804.2	1,803.1	4.4	3.9	-173.46	-173.46	11.6	-20.7	128.2	120.6	7.65	16.754	
1,900.0	1,887.7	1,903.3	1,901.6	4.8	4.2	-172.64	-172.64	16.5	-11.1	141.4	133.3	8.12	17.427	
2,000.0	1,985.0	2,002.4	2,000.1	5.2	4.4	-171.96	-171.96	21.5	-1.5	154.7	146.1	8.59	18.011	
2,100.0	2,082.3	2,101.5	2,098.6	5.7	4.7	-171.38	-171.38	26.4	8.1	167.9	158.9	9.07	18.521	
2,200.0	2,179.6	2,200.6	2,197.1	6.1	4.9	-170.89	-170.89	31.4	17.8	181.2	171.7	9.55	18.967	
2,300.0	2,276.9	2,299.7	2,295.6	6.6	5.2	-170.47	-170.47	36.3	27.4	194.5	184.5	10.05	19.360	
2,400.0	2,374.2	2,398.8	2,394.1	7.0	5.5	-170.10	-170.10	41.3	37.0	207.8	197.3	10.54	19.707	
2,500.0	2,471.5	2,498.0	2,492.6	7.5	5.7	-169.77	-169.77	46.2	46.6	221.1	210.1	11.05	20.016	
2,600.0	2,568.8	2,597.1	2,591.2	8.0	6.0	-169.48	-169.48	51.1	56.2	234.4	222.9	11.55	20.291	
2,700.0	2,666.1	2,696.2	2,689.7	8.4	6.3	-169.23	-169.23	56.1	65.8	247.7	235.7	12.06	20.538	
2,800.0	2,763.4	2,795.3	2,788.2	8.9	6.6	-169.00	-169.00	61.0	75.4	261.0	248.5	12.57	20.760	
2,900.0	2,860.7	2,894.4	2,886.7	9.4	6.9	-168.79	-168.79	66.0	85.1	274.4	261.3	13.09	20.960	
3,000.0	2,958.0	2,993.5	2,985.2	9.9	7.1	-168.60	-168.60	70.9	94.7	287.7	274.1	13.61	21.141	
3,100.0	3,055.3	3,092.6	3,083.7	10.4	7.4	-168.42	-168.42	75.9	104.3	301.0	286.9	14.13	21.306	
3,200.0	3,152.6	3,191.7	3,182.2	10.9	7.7	-168.27	-168.27	80.8	113.9	314.4	299.7	14.65	21.457	
3,300.0	3,249.9	3,290.8	3,280.7	11.3	8.0	-168.12	-168.12	85.8	123.5	327.7	312.5	15.17	21.595	
3,400.0	3,347.2	3,389.9	3,379.3	11.8	8.3	-167.99	-167.99	90.7	133.1	341.0	325.3	15.70	21.721	
3,500.0	3,444.5	3,489.0	3,477.8	12.3	8.6	-167.86	-167.86	95.7	142.7	354.4	338.1	16.23	21.837	
3,600.0	3,541.9	3,588.1	3,576.3	12.8	8.9	-167.75	-167.75	100.6	152.4	367.7	350.9	16.76	21.945	
3,700.0	3,639.2	3,687.2	3,674.8	13.3	9.1	-167.64	-167.64	105.6	162.0	381.0	363.7	17.29	22.044	
3,800.0	3,736.5	3,786.3	3,773.3	13.8	9.4	-167.54	-167.54	110.5	171.6	394.4	376.6	17.82	22.136	
3,900.0	3,833.8	3,885.4	3,871.8	14.3	9.7	-167.45	-167.45	115.4	181.2	407.7	389.4	18.35	22.221	
4,000.0	3,931.1	3,984.5	3,970.3	14.8	10.0	-167.36	-167.36	120.4	190.8	421.1	402.2	18.88	22.301	
4,100.0	4,028.4	4,083.6	4,068.8	15.3	10.3	-167.28	-167.28	125.3	200.4	434.4	415.0	19.41	22.375	
4,200.0	4,125.7	4,182.7	4,167.4	15.8	10.6	-167.20	-167.20	130.3	210.1	447.7	427.8	19.95	22.445	
4,300.0	4,223.0	4,281.8	4,265.9	16.3	10.9	-167.13	-167.13	135.2	219.7	461.1	440.6	20.48	22.510	
4,400.0	4,320.3	4,380.9	4,364.4	16.8	11.2	-167.06	-167.06	140.2	229.3	474.4	453.4	21.02	22.570	
4,500.0	4,417.6	4,480.0	4,462.9	17.3	11.5	-167.00	-167.00	145.1	238.9	487.8	466.2	21.56	22.628	
4,600.0	4,514.9	4,579.1	4,561.4	17.7	11.8	-166.94	-166.94	150.1	248.5	501.1	479.0	22.09	22.682	
4,700.0	4,612.2	4,668.6	4,650.4	18.2	12.0	-166.93	-166.93	154.2	256.6	515.2	492.6	22.59	22.808	
4,800.0	4,709.5	4,753.9	4,735.5	18.7	12.2	-167.06	-167.06	157.0	262.1	531.6	508.6	23.03	23.080	
4,900.0	4,806.8	4,838.4	4,819.9	19.2	12.3	-167.32	-167.32	158.7	265.3	550.6	527.1	23.45	23.475	
5,000.0	4,904.1	4,922.6	4,904.1	19.7	12.5	-167.70	-167.70	159.2	266.3	572.0	548.2	23.86	23.975	

CC - Min centre to center distance or convergent point, SF - min separation factor, ES - min ellipse separation

Company:	Synergy Resources	Local Co-ordinate Reference:	Well SRC Leffler 24-26NHZ
Project:	SEC.26-T7N-R66W	TVD Reference:	WELL @ 4912.0ft (RKB-12')
Reference Site:	SRC Leffler 14-26NHZ Pad Sec.26-T7N-R66W	MD Reference:	WELL @ 4912.0ft (RKB-12')
Site Error:	0.0ft	North Reference:	True
Reference Well:	SRC Leffler 24-26NHZ	Survey Calculation Method:	Minimum Curvature
Well Error:	0.0ft	Output errors are at	2.00 sigma
Reference Wellbore	Wellbore #1	Database:	Landmark
Reference Design:	Plan #2 (8-08-13)	Offset TVD Reference:	Offset Datum

Offset Design SRC Leffler 14-26NHZ Pad Sec.26-T7N-R66W - SRC Leffler B-26CHZ - Wellbore #1 - Plan #2 (8-08-13)													Offset Site Error:	0.0 ft
Survey Program: 0-MWD													Offset Well Error:	0.0 ft
Measured Depth (ft)	Vertical Depth (ft)	Measured Depth (ft)	Vertical Depth (ft)	Reference	Offset	Semi Major Axis	Highside Toolface (°)	Offset Wellbore Centre +N/-S (ft)	Offset Wellbore Centre +E/-W (ft)	Between Centres (ft)	Between Ellipses (ft)	Minimum Separation (ft)	Separation Factor	Warning
5,100.0	5,001.4	5,019.9	5,001.4	20.2	12.7	-168.17		159.2	266.3	594.6	570.3	24.29	24.481	
5,200.0	5,098.7	5,117.2	5,098.7	20.7	12.8	-168.61		159.2	266.3	617.2	592.5	24.73	24.956	
5,300.0	5,196.0	5,214.5	5,196.0	21.2	13.0	-169.02		159.2	266.3	639.9	614.7	25.18	25.413	
5,400.0	5,293.3	5,311.8	5,293.3	21.7	13.2	-169.40		159.2	266.3	662.6	636.9	25.63	25.852	
5,500.0	5,390.6	5,409.1	5,390.6	22.2	13.4	-169.75		159.2	266.3	685.3	659.2	26.08	26.274	
5,600.0	5,487.9	5,506.4	5,487.9	22.7	13.6	-170.09		159.2	266.3	708.0	681.5	26.54	26.680	
5,700.0	5,585.2	5,603.7	5,585.2	23.2	13.8	-170.40		159.2	266.3	730.8	703.8	26.99	27.071	
5,800.0	5,682.6	5,701.1	5,682.6	23.7	14.0	-170.72		159.2	266.3	753.2	725.7	27.47	27.415	
5,900.0	5,780.6	5,799.1	5,780.6	24.0	14.2	-171.02		159.2	266.3	772.8	744.9	27.94	27.661	
6,000.0	5,879.2	5,897.7	5,879.2	24.3	14.3	-171.25		159.2	266.3	789.0	760.6	28.37	27.810	
6,100.0	5,978.4	5,996.9	5,978.4	24.6	14.5	-171.43		159.2	266.3	801.8	773.1	28.77	27.869	
6,200.0	6,077.9	6,096.4	6,077.9	24.8	14.7	-171.56		159.2	266.3	811.2	782.1	29.14	27.842	
6,300.0	6,177.7	6,196.3	6,177.7	25.0	14.9	-171.64		159.2	266.3	817.2	787.7	29.47	27.733	
6,400.0	6,277.7	6,296.2	6,277.7	25.1	15.1	-171.67		159.2	266.3	819.7	789.9	29.76	27.544	
6,500.0	6,377.7	6,396.2	6,377.7	25.2	15.3	-90.06		159.2	266.3	819.7	789.6	30.14	27.197	
6,600.0	6,477.7	6,496.2	6,477.7	25.3	15.5	-90.06		159.2	266.3	819.7	789.2	30.53	26.849	
6,610.4	6,488.1	6,506.6	6,488.1	25.3	15.6	90.27		159.2	266.3	819.7	789.2	30.55	26.835	
6,700.0	6,577.5	6,596.0	6,577.5	25.4	15.7	90.60		159.2	266.3	819.8	788.9	30.90	26.527	
6,800.0	6,675.7	6,694.2	6,675.7	25.5	15.9	91.84		159.2	266.3	820.2	788.9	31.33	26.183	
6,900.0	6,770.3	6,796.3	6,770.3	25.6	16.1	93.60		152.8	266.3	821.5	789.8	31.71	25.903	
7,000.0	6,859.6	6,902.8	6,859.6	25.6	16.2	95.33		130.8	266.4	823.5	791.5	32.01	25.730	
7,100.0	6,941.7	7,014.0	6,941.7	25.7	16.3	96.98		91.6	266.6	826.2	794.0	32.24	25.628	
7,200.0	7,015.1	7,130.0	7,015.1	25.8	16.4	98.53		34.1	267.0	829.3	796.9	32.49	25.528	
7,300.0	7,078.4	7,250.9	7,078.4	25.9	16.6	99.92		-42.2	267.4	832.6	799.7	32.88	25.322	
7,400.0	7,130.3	7,376.6	7,130.3	26.1	16.8	101.10		-137.1	267.9	835.7	802.1	33.60	24.875	
7,500.0	7,169.8	7,506.5	7,169.8	26.4	17.3	102.02		-248.6	268.5	838.3	803.5	34.79	24.096	
7,600.0	7,196.1	7,639.6	7,196.1	26.9	18.2	102.63		-373.4	269.2	840.2	803.6	36.59	22.963	
7,700.0	7,208.8	7,774.7	7,208.8	27.4	19.4	102.91		-506.4	270.0	841.0	802.0	38.99	21.572	
7,800.0	7,210.0	7,888.0	7,210.0	28.1	20.6	102.92		-619.7	270.6	841.1	799.7	41.40	20.315	
7,900.0	7,210.0	7,988.0	7,210.0	28.9	21.8	102.92		-719.6	271.1	841.1	797.3	43.77	19.216	
8,000.0	7,210.0	8,088.0	7,210.0	29.8	23.1	102.92		-819.6	271.7	841.1	794.7	46.32	18.157	
8,100.0	7,210.0	8,188.0	7,210.0	30.8	24.5	102.92		-919.6	272.3	841.1	792.0	49.03	17.154	
8,200.0	7,210.0	8,288.0	7,210.0	32.0	26.0	102.92		-1,019.6	272.8	841.1	789.2	51.87	16.214	
8,300.0	7,210.0	8,388.0	7,210.0	33.1	27.5	102.92		-1,119.6	273.4	841.1	786.3	54.83	15.341	
8,400.0	7,210.0	8,488.0	7,210.0	34.4	29.0	102.92		-1,219.6	273.9	841.1	783.2	57.88	14.532	
8,500.0	7,210.0	8,588.0	7,210.0	35.8	30.6	102.92		-1,319.6	274.5	841.1	780.1	61.01	13.787	
8,600.0	7,210.0	8,688.0	7,210.0	37.1	32.3	102.92		-1,419.6	275.0	841.1	776.9	64.20	13.100	
8,700.0	7,210.0	8,788.0	7,210.0	38.6	33.9	102.92		-1,519.6	275.6	841.1	773.6	67.46	12.468	
8,800.0	7,210.0	8,888.0	7,210.0	40.1	35.6	102.92		-1,619.6	276.2	841.1	770.3	70.77	11.885	
8,900.0	7,210.0	8,988.0	7,210.0	41.6	37.3	102.92		-1,719.6	276.7	841.1	767.0	74.12	11.348	
9,000.0	7,210.0	9,088.0	7,210.0	43.1	39.1	102.92		-1,819.6	277.3	841.1	763.6	77.51	10.851	
9,100.0	7,210.0	9,188.0	7,210.0	44.7	40.8	102.92		-1,919.6	277.8	841.1	760.2	80.94	10.392	
9,200.0	7,210.0	9,288.0	7,210.0	46.3	42.6	102.92		-2,019.6	278.4	841.1	756.7	84.39	9.967	
9,300.0	7,210.0	9,388.0	7,210.0	48.0	44.4	102.92		-2,119.6	278.9	841.1	753.3	87.87	9.573	
9,400.0	7,210.0	9,488.0	7,210.0	49.6	46.2	102.92		-2,219.6	279.5	841.1	749.8	91.37	9.206	
9,500.0	7,210.0	9,588.0	7,210.0	51.3	48.0	102.92		-2,319.6	280.0	841.1	746.2	94.89	8.864	
9,600.0	7,210.0	9,688.0	7,210.0	53.0	49.8	102.91		-2,419.6	280.6	841.1	742.7	98.44	8.545	
9,700.0	7,210.0	9,788.0	7,210.0	54.7	51.6	102.91		-2,519.6	281.2	841.2	739.2	101.99	8.247	
9,800.0	7,210.0	9,888.0	7,210.0	56.5	53.4	102.91		-2,619.6	281.7	841.2	735.6	105.57	7.968	
9,900.0	7,210.0	9,988.0	7,210.0	58.2	55.2	102.91		-2,719.6	282.3	841.2	732.0	109.15	7.706	
10,000.0	7,210.0	10,088.0	7,210.0	59.9	57.1	102.91		-2,819.6	282.8	841.2	728.4	112.75	7.461	

CC - Min centre to center distance or convergent point, SF - min separation factor, ES - min ellipse separation

Company:	Synergy Resources	Local Co-ordinate Reference:	Well SRC Leffler 24-26NHZ
Project:	SEC.26-T7N-R66W	TVD Reference:	WELL @ 4912.0ft (RKB-12')
Reference Site:	SRC Leffler 14-26NHZ Pad Sec.26-T7N-R66W	MD Reference:	WELL @ 4912.0ft (RKB-12')
Site Error:	0.0ft	North Reference:	True
Reference Well:	SRC Leffler 24-26NHZ	Survey Calculation Method:	Minimum Curvature
Well Error:	0.0ft	Output errors are at	2.00 sigma
Reference Wellbore	Wellbore #1	Database:	Landmark
Reference Design:	Plan #2 (8-08-13)	Offset TVD Reference:	Offset Datum

Offset Design												Offset Site Error:	0.0 ft
Survey Program: 0-MWD												Offset Well Error:	0.0 ft
SRC Leffler 14-26NHZ Pad Sec.26-T7N-R66W - SRC Leffler B-26CHZ - Wellbore #1 - Plan #2 (8-08-13)													
Reference		Offset		Semi Major Axis		Highside Toolface (°)	Offset Wellbore Centre		Distance				Warning
Measured Depth (ft)	Vertical Depth (ft)	Measured Depth (ft)	Vertical Depth (ft)	Reference (ft)	Offset (ft)		+N/-S (ft)	+E/-W (ft)	Between Centres (ft)	Between Ellipses (ft)	Minimum Separation (ft)	Separation Factor	
10,100.0	7,210.0	10,188.0	7,398.0	61.7	58.9	102.91	-2,919.6	283.4	841.2	724.8	116.36	7.229	
10,200.0	7,210.0	10,288.0	7,398.0	63.5	60.8	102.91	-3,019.6	283.9	841.2	721.2	119.97	7.011	
10,300.0	7,210.0	10,388.0	7,398.0	65.2	62.6	102.91	-3,119.6	284.5	841.2	717.6	123.60	6.806	
10,400.0	7,210.0	10,488.0	7,398.0	67.0	64.5	102.91	-3,219.6	285.1	841.2	713.9	127.24	6.611	
10,500.0	7,210.0	10,588.0	7,398.0	68.8	66.4	102.91	-3,319.6	285.6	841.2	710.3	130.88	6.427	
10,600.0	7,210.0	10,688.0	7,398.0	70.6	68.2	102.91	-3,419.6	286.2	841.2	706.7	134.53	6.253	
10,700.0	7,210.0	10,788.0	7,398.0	72.4	70.1	102.91	-3,519.6	286.7	841.2	703.0	138.19	6.087	
10,800.0	7,210.0	10,888.0	7,398.0	74.3	72.0	102.91	-3,619.6	287.3	841.2	699.4	141.85	5.930	
10,900.0	7,210.0	10,988.0	7,398.0	76.1	73.8	102.91	-3,719.6	287.8	841.2	695.7	145.52	5.781	
11,000.0	7,210.0	11,088.0	7,398.0	77.9	75.7	102.91	-3,819.6	288.4	841.2	692.0	149.19	5.639	
11,100.0	7,210.0	11,188.0	7,398.0	79.7	77.6	102.91	-3,919.6	288.9	841.2	688.4	152.87	5.503	
11,200.0	7,210.0	11,288.0	7,398.0	81.6	79.5	102.91	-4,019.6	289.5	841.2	684.7	156.55	5.374	
11,300.0	7,210.0	11,388.0	7,398.0	83.4	81.4	102.91	-4,119.6	290.1	841.2	681.0	160.24	5.250	
11,400.0	7,210.0	11,488.0	7,398.0	85.2	83.2	102.91	-4,219.6	290.6	841.2	677.3	163.93	5.132	
11,500.0	7,210.0	11,588.0	7,398.0	87.1	85.1	102.91	-4,319.6	291.2	841.2	673.6	167.62	5.019	
11,600.0	7,210.0	11,688.0	7,398.0	88.9	87.0	102.91	-4,419.6	291.7	841.2	669.9	171.32	4.911	
11,700.0	7,210.0	11,788.0	7,398.0	90.8	88.9	102.91	-4,519.6	292.3	841.3	666.2	175.02	4.807	
11,800.0	7,210.0	11,888.0	7,398.0	92.6	90.8	102.91	-4,619.6	292.8	841.3	662.5	178.72	4.707	
11,814.1	7,210.0	11,902.1	7,398.0	92.9	91.1	102.91	-4,633.7	292.9	841.3	662.0	179.24	4.693 SF	

Offset Design													Offset Site Error:		0.0 ft
Survey Program: 0-MWD													Offset Well Error:		0.0 ft
Reference		Offset		Semi Major Axis			Distance							Warning	
Measured Depth	Vertical Depth	Measured Depth	Vertical Depth	Reference	Offset	Highside Toolface	Offset Wellbore Centre		Between Centres	Between Ellipses	Minimum Separation	Separation Factor			
(ft)	(ft)	(ft)	(ft)	(ft)	(ft)	(°)	+N/-S (ft)	+E/-W (ft)	(ft)	(ft)	(ft)				
0.0	0.0	0.0	0.0	0.0	0.0	89.18	0.6	45.3	45.3						
100.0	100.0	100.0	100.0	0.1	0.1	89.18	0.6	45.3	45.3	45.1	0.22	201.547			
200.0	200.0	200.0	200.0	0.3	0.3	89.18	0.6	45.3	45.3	44.6	0.67	67.182 CC, ES			
300.0	300.0	298.4	298.4	0.6	0.6	88.99	0.8	47.0	47.0	45.9	1.11	42.288			
400.0	400.0	396.6	396.4	0.8	0.8	88.50	1.4	52.0	52.1	50.6	1.56	33.496			
500.0	500.0	494.3	493.8	1.0	1.0	87.86	2.2	60.3	60.7	58.6	2.03	29.949			
600.0	600.0	591.3	590.1	1.2	1.3	87.23	3.5	71.8	72.6	70.1	2.53	28.727			
700.0	700.0	687.5	685.1	1.5	1.6	86.67	5.0	86.4	87.9	84.8	3.07	28.648			
800.0	800.0	782.5	778.5	1.7	2.0	86.20	6.9	104.0	106.4	102.8	3.65	29.157			
900.0	900.0	876.3	870.0	1.9	2.4	85.83	9.1	124.3	128.2	123.9	4.28	29.962			
1,000.0	1,000.0	968.6	959.4	2.1	2.8	85.53	11.5	147.2	153.1	148.2	4.95	30.938			
1,100.0	1,100.0	1,064.9	1,052.1	2.3	3.3	3.67	14.2	172.9	178.3	173.5	4.80	37.129			
1,200.0	1,199.8	1,162.4	1,146.2	2.6	3.9	3.56	17.0	198.9	200.0	194.8	5.25	38.068			
1,300.0	1,299.5	1,260.7	1,240.8	2.8	4.4	3.52	19.8	225.2	218.4	212.7	5.72	38.177			
1,400.0	1,398.7	1,359.6	1,336.1	3.0	5.0	3.54	22.6	251.6	233.3	227.1	6.19	37.670			
1,500.0	1,497.5	1,459.0	1,431.8	3.3	5.5	3.61	25.5	278.1	244.8	238.1	6.68	36.662			
1,600.0	1,595.6	1,558.6	1,527.8	3.6	6.1	3.73	28.3	304.7	252.8	245.6	7.17	35.279			
1,700.0	1,693.1	1,658.5	1,624.0	4.0	6.6	3.90	31.1	331.4	257.5	249.8	7.67	33.581			
1,800.0	1,790.4	1,758.4	1,720.3	4.4	7.2	4.07	34.0	358.0	261.4	253.3	8.20	31.901			
1,900.0	1,887.7	1,858.3	1,816.5	4.8	7.8	4.25	36.8	384.7	265.4	256.7	8.73	30.403			
2,000.0	1,985.0	1,958.3	1,912.8	5.2	8.3	4.41	39.7	411.4	269.3	260.1	9.27	29.062			
2,100.0	2,082.3	2,058.2	2,009.0	5.7	8.9	4.58	42.5	438.0	273.3	263.5	9.81	27.857			
2,200.0	2,179.6	2,158.1	2,105.3	6.1	9.5	4.73	45.4	464.7	277.2	266.9	10.36	26.768			
2,300.0	2,276.9	2,258.0	2,201.5	6.6	10.1	4.89	48.2	491.4	281.2	270.3	10.91	25.781			
2,400.0	2,374.2	2,357.9	2,297.8	7.0	10.6	5.04	51.0	518.1	285.2	273.7	11.46	24.883			
2,500.0	2,471.5	2,457.9	2,394.0	7.5	11.2	5.18	53.9	544.7	289.1	277.1	12.02	24.063			
2,600.0	2,568.8	2,557.8	2,490.3	8.0	11.8	5.32	56.7	571.4	293.1	280.5	12.57	23.311			
2,700.0	2,666.1	2,657.7	2,586.5	8.4	12.3	5.46	59.6	598.1	297.0	283.9	13.13	22.620			
2,800.0	2,763.4	2,757.6	2,682.8	8.9	12.9	5.59	62.4	624.8	301.0	287.3	13.69	21.982			
2,900.0	2,860.7	2,857.5	2,779.0	9.4	13.5	5.72	65.3	651.4	305.0	290.7	14.26	21.392			
3,000.0	2,958.0	2,957.5	2,875.3	9.9	14.1	5.85	68.1	678.1	308.9	294.1	14.82	20.845			
3,100.0	3,055.3	3,057.4	2,971.5	10.4	14.6	5.97	70.9	704.8	312.9	297.5	15.39	20.337			
3,200.0	3,152.6	3,157.3	3,067.8	10.9	15.2	6.09	73.8	731.4	316.9	300.9	15.95	19.863			
3,300.0	3,249.9	3,257.2	3,164.0	11.3	15.8	6.21	76.6	758.1	320.8	304.3	16.52	19.420			
3,400.0	3,347.2	3,357.1	3,260.3	11.8	16.3	6.33	79.5	784.8	324.8	307.7	17.09	19.005			
3,500.0	3,444.5	3,457.1	3,356.5	12.3	16.9	6.44	82.3	811.5	328.8	311.1	17.66	18.616			
3,600.0	3,541.9	3,557.0	3,452.8	12.8	17.5	6.55	85.2	838.1	332.8	314.5	18.23	18.251			
3,700.0	3,639.2	3,656.9	3,549.0	13.3	18.1	6.65	88.0	864.8	336.7	317.9	18.81	17.907			
3,800.0	3,736.5	3,756.8	3,645.3	13.8	18.6	6.76	90.8	891.5	340.7	321.3	19.38	17.583			
3,900.0	3,833.8	3,856.7	3,741.5	14.3	19.2	6.86	93.7	918.1	344.7	324.7	19.95	17.276			
4,000.0	3,931.1	3,956.6	3,837.8	14.8	19.8	6.96	96.5	944.8	348.7	328.2	20.53	16.986			
4,100.0	4,028.4	4,056.6	3,934.0	15.3	20.4	7.06	99.4	971.5	352.7	331.6	21.10	16.712			
4,200.0	4,125.7	4,156.5	4,030.3	15.8	20.9	7.15	102.2	998.2	356.6	335.0	21.68	16.451			
4,300.0	4,223.0	4,256.4	4,126.5	16.3	21.5	7.24	105.1	1,024.8	360.6	338.4	22.26	16.203			
4,400.0	4,320.3	4,356.3	4,222.8	16.8	22.1	7.33	107.9	1,051.5	364.6	341.8	22.83	15.968			
4,500.0	4,417.6	4,456.2	4,319.0	17.3	22.7	7.42	110.7	1,078.2	368.6	345.2	23.41	15.744			
4,600.0	4,514.9	4,556.2	4,415.3	17.7	23.2	7.51	113.6	1,104.9	372.6	348.6	23.99	15.530			
4,700.0	4,612.2	4,656.1	4,511.5	18.2	23.8	7.60	116.4	1,131.5	376.6	352.0	24.57	15.326			
4,800.0	4,709.5	4,756.0	4,607.8	18.7	24.4	7.68	119.3	1,158.2	380.5	355.4	25.15	15.131			
4,900.0	4,806.8	4,855.9	4,704.0	19.2	24.9	7.76	122.1	1,184.9	384.5	358.8	25.73	14.945			
5,000.0	4,904.1	4,955.8	4,800.3	19.7	25.5	7.84	125.0	1,211.5	388.5	362.2	26.31	14.766			

COMPASS 2003.21 Build 46

Company:	Synergy Resources	Local Co-ordinate Reference:	Well SRC Leffler 24-26NHZ
Project:	SEC.26-T7N-R66W	TVD Reference:	WELL @ 4912.0ft (RKB-12')
Reference Site:	SRC Leffler 14-26NHZ Pad Sec.26-T7N-R66W	MD Reference:	WELL @ 4912.0ft (RKB-12')
Site Error:	0.0ft	North Reference:	True
Reference Well:	SRC Leffler 24-26NHZ	Survey Calculation Method:	Minimum Curvature
Well Error:	0.0ft	Output errors are at	2.00 sigma
Reference Wellbore	Wellbore #1	Database:	Landmark
Reference Design:	Plan #2 (8-08-13)	Offset TVD Reference:	Offset Datum

Offset Design SRC Leffler 14-26NHZ Pad Sec.26-T7N-R66W - SRC Leffler P-26NHZ - Wellbore #1 - Plan #3 (8-08-13)													Offset Site Error:	0.0 ft
Survey Program: 0-MWD													Offset Well Error:	0.0 ft
Measured Depth (ft)	Vertical Depth (ft)	Measured Depth (ft)	Vertical Depth (ft)	Reference	Offset	Semi Major Axis	Highside Toolface (°)	Offset Wellbore Centre +N/-S (ft)	Offset Wellbore Centre +E/-W (ft)	Between Centres (ft)	Between Ellipses (ft)	Minimum Separation (ft)	Separation Factor	Warning
5,100.0	5,001.4	5,055.8	4,896.5	20.2	26.1	7.92	7.92	127.8	1,238.2	392.5	365.6	26.89	14.595	
5,200.0	5,098.7	5,155.7	4,992.8	20.7	26.7	8.00	8.00	130.7	1,264.9	396.5	369.0	27.48	14.431	
5,300.0	5,196.0	5,255.6	5,089.0	21.2	27.2	8.07	8.07	133.5	1,291.6	400.5	372.4	28.06	14.274	
5,400.0	5,293.3	5,355.5	5,185.3	21.7	27.8	8.14	8.14	136.3	1,318.2	404.5	375.8	28.64	14.123	
5,500.0	5,390.6	5,455.4	5,281.5	22.2	28.4	8.22	8.22	139.2	1,344.9	408.5	379.3	29.22	13.977	
5,600.0	5,487.9	5,555.3	5,377.8	22.7	29.0	8.29	8.29	142.0	1,371.6	412.5	382.7	29.81	13.837	
5,700.0	5,585.2	5,655.3	5,474.1	23.2	29.5	8.36	8.36	144.9	1,398.3	416.5	386.1	30.39	13.703	
5,800.0	5,682.6	5,755.2	5,570.3	23.7	30.1	8.42	8.42	147.7	1,424.9	420.8	389.8	30.97	13.589	
5,900.0	5,780.6	5,861.3	5,672.6	24.0	30.7	8.45	8.45	150.7	1,452.9	427.8	396.3	31.48	13.589	
6,000.0	5,879.2	5,978.6	5,786.7	24.3	31.2	8.45	8.45	153.6	1,480.2	435.0	403.0	31.93	13.621	
6,100.0	5,978.4	6,096.3	5,902.1	24.6	31.6	8.44	8.44	156.0	1,502.9	441.5	409.2	32.31	13.664	
6,200.0	6,077.9	6,214.3	6,018.7	24.8	31.9	8.42	8.42	157.9	1,521.0	447.4	414.8	32.62	13.715	
6,300.0	6,177.7	6,332.7	6,136.3	25.0	32.2	8.39	8.39	159.4	1,534.2	452.7	419.8	32.86	13.775	
6,400.0	6,277.7	6,451.3	6,254.6	25.1	32.4	8.34	8.34	160.3	1,542.6	457.3	424.3	33.04	13.842	
6,500.0	6,377.7	6,570.2	6,373.5	25.2	32.5	89.92	89.92	160.6	1,546.2	460.2	426.8	33.38	13.786	
6,600.0	6,477.7	6,674.5	6,477.7	25.3	32.6	89.92	89.92	160.6	1,546.3	460.3	426.6	33.72	13.650	
6,657.5	6,535.2	6,731.9	6,535.2	25.4	32.6	-90.00	-90.00	160.6	1,546.3	460.3	426.5	33.84	13.604	
6,700.0	6,577.5	6,774.3	6,577.5	25.4	32.7	-90.37	-90.37	160.6	1,546.3	460.3	426.4	33.92	13.568	
6,800.0	6,675.7	6,874.1	6,677.3	25.5	32.8	-92.34	-92.34	158.2	1,546.3	460.7	426.7	33.98	13.556	
6,900.0	6,770.3	6,976.6	6,778.5	25.6	32.8	-94.44	-94.44	142.4	1,546.4	461.7	427.7	34.06	13.557	
7,000.0	6,859.6	7,081.8	6,878.9	25.6	32.9	-96.46	-96.46	111.3	1,546.6	463.3	429.1	34.20	13.547	
7,100.0	6,941.7	7,189.7	6,976.0	25.7	32.9	-98.37	-98.37	64.6	1,546.8	465.4	430.9	34.43	13.514	
7,200.0	7,015.1	7,300.4	7,067.2	25.8	33.0	-100.12	-100.12	2.0	1,547.2	467.7	432.9	34.76	13.454	
7,300.0	7,078.4	7,413.8	7,149.5	25.9	33.1	-101.66	-101.66	-75.8	1,547.6	470.1	434.9	35.19	13.359	
7,400.0	7,130.3	7,529.6	7,219.8	26.1	33.2	-102.96	-102.96	-167.7	1,548.1	472.4	436.7	35.74	13.218	
7,500.0	7,169.8	7,647.5	7,275.2	26.4	33.5	-103.97	-103.97	-271.6	1,548.7	474.3	437.9	36.42	13.023	
7,600.0	7,196.1	7,767.0	7,313.2	26.9	33.8	-104.66	-104.66	-384.7	1,549.3	475.8	438.5	37.29	12.757	
7,700.0	7,208.8	7,887.5	7,332.0	27.4	34.3	-105.02	-105.02	-503.6	1,549.9	476.5	438.1	38.38	12.414	
7,800.0	7,210.0	7,999.9	7,332.5	28.1	34.9	-104.91	-104.91	-615.9	1,550.6	476.2	436.1	40.16	11.858	
7,900.0	7,210.0	8,099.8	7,329.7	28.9	35.5	-104.58	-104.58	-715.9	1,551.1	475.5	433.1	42.45	11.202	
8,000.0	7,210.0	8,199.8	7,327.0	29.8	36.2	-104.26	-104.26	-815.8	1,551.7	474.8	429.9	44.95	10.563	
8,100.0	7,210.0	8,299.7	7,324.2	30.8	37.0	-103.94	-103.94	-915.7	1,552.2	474.1	426.5	47.63	9.954	
8,200.0	7,210.0	8,399.7	7,321.5	32.0	37.9	-103.62	-103.62	-1,015.6	1,552.8	473.5	423.0	50.47	9.382	
8,300.0	7,210.0	8,499.7	7,318.7	33.1	38.9	-103.29	-103.29	-1,115.6	1,553.3	472.8	419.4	53.43	8.849	
8,400.0	7,210.0	8,599.6	7,316.0	34.4	39.9	-102.97	-102.97	-1,215.5	1,553.9	472.2	415.7	56.51	8.356	
8,500.0	7,210.0	8,699.6	7,313.2	35.8	41.1	-102.64	-102.64	-1,315.4	1,554.4	471.6	411.9	59.68	7.902	
8,600.0	7,210.0	8,799.6	7,310.4	37.1	42.2	-102.31	-102.31	-1,415.3	1,555.0	471.0	408.0	62.93	7.483	
8,700.0	7,210.0	8,899.5	7,307.7	38.6	43.5	-101.99	-101.99	-1,515.2	1,555.5	470.4	404.1	66.26	7.099	
8,800.0	7,210.0	8,999.5	7,304.9	40.1	44.8	-101.66	-101.66	-1,615.2	1,556.1	469.8	400.1	69.65	6.745	
8,900.0	7,210.0	9,099.4	7,302.2	41.6	46.1	-101.33	-101.33	-1,715.1	1,556.6	469.2	396.1	73.09	6.420	
9,000.0	7,210.0	9,199.4	7,299.4	43.1	47.5	-101.00	-101.00	-1,815.0	1,557.2	468.7	392.1	76.58	6.121	
9,100.0	7,210.0	9,299.4	7,296.7	44.7	49.0	-100.67	-100.67	-1,914.9	1,557.7	468.2	388.0	80.11	5.844	
9,200.0	7,210.0	9,399.3	7,293.9	46.3	50.4	-100.34	-100.34	-2,014.9	1,558.3	467.6	384.0	83.67	5.589	
9,300.0	7,210.0	9,499.3	7,291.2	48.0	51.9	-100.00	-100.00	-2,114.8	1,558.8	467.1	379.9	87.27	5.353	
9,400.0	7,210.0	9,599.3	7,288.4	49.6	53.4	-99.67	-99.67	-2,214.7	1,559.4	466.7	375.8	90.90	5.134	
9,500.0	7,210.0	9,699.2	7,285.6	51.3	55.0	-99.34	-99.34	-2,314.6	1,559.9	466.2	371.6	94.56	4.930	
9,600.0	7,210.0	9,799.2	7,282.9	53.0	56.6	-99.00	-99.00	-2,414.5	1,560.5	465.7	367.5	98.24	4.741	
9,700.0	7,210.0	9,899.1	7,280.1	54.7	58.2	-98.67	-98.67	-2,514.5	1,561.0	465.3	363.4	101.94	4.565	
9,800.0	7,210.0	9,999.1	7,277.4	56.5	59.8	-98.33	-98.33	-2,614.4	1,561.6	464.9	359.2	105.66	4.400	
9,900.0	7,210.0	10,099.1	7,274.6	58.2	61.4	-98.00	-98.00	-2,714.3	1,562.1	464.5	355.1	109.39	4.246	
10,000.0	7,210.0	10,199.0	7,271.9	59.9	63.1	-97.66	-97.66	-2,814.2	1,562.7	464.1	351.0	113.14	4.102	

CC - Min centre to center distance or convergent point, SF - min separation factor, ES - min ellipse separation

Company:	Synergy Resources	Local Co-ordinate Reference:	Well SRC Leffler 24-26NHZ
Project:	SEC.26-T7N-R66W	TVD Reference:	WELL @ 4912.0ft (RKB-12')
Reference Site:	SRC Leffler 14-26NHZ Pad Sec.26-T7N-R66W	MD Reference:	WELL @ 4912.0ft (RKB-12')
Site Error:	0.0ft	North Reference:	True
Reference Well:	SRC Leffler 24-26NHZ	Survey Calculation Method:	Minimum Curvature
Well Error:	0.0ft	Output errors are at	2.00 sigma
Reference Wellbore	Wellbore #1	Database:	Landmark
Reference Design:	Plan #2 (8-08-13)	Offset TVD Reference:	Offset Datum

Offset Design SRC Leffler 14-26NHZ Pad Sec.26-T7N-R66W - SRC Leffler P-26NHZ - Wellbore #1 - Plan #3 (8-08-13)													Offset Site Error:	0.0 ft
Survey Program: 0-MWD													Offset Well Error:	0.0 ft
Measured Depth (ft)	Vertical Depth (ft)	Measured Depth (ft)	Vertical Depth (ft)	Reference	Offset	Highside Toolface (°)	Offset Wellbore Centre +N/-S (ft)	+E/-W (ft)	Between Centres (ft)	Between Ellipses (ft)	Minimum Separation (ft)	Separation Factor	Warning	
10,100.0	7,210.0	10,299.0	7,269.1	61.7	64.8	-97.32	-2,914.2	1,563.2	463.7	346.8	116.91	3.967		
10,200.0	7,210.0	10,398.9	7,266.3	63.5	66.4	-96.98	-3,014.1	1,563.8	463.4	342.7	120.69	3.839		
10,300.0	7,210.0	10,498.9	7,263.6	65.2	68.1	-96.65	-3,114.0	1,564.3	463.0	338.6	124.48	3.720		
10,400.0	7,210.0	10,598.9	7,260.8	67.0	69.9	-96.31	-3,213.9	1,564.9	462.7	334.4	128.27	3.607		
10,500.0	7,210.0	10,698.8	7,258.1	68.8	71.6	-95.97	-3,313.8	1,565.4	462.4	330.3	132.08	3.501		
10,600.0	7,210.0	10,798.8	7,255.3	70.6	73.3	-95.63	-3,413.8	1,566.0	462.1	326.2	135.90	3.400		
10,700.0	7,210.0	10,898.8	7,252.6	72.4	75.1	-95.29	-3,513.7	1,566.5	461.8	322.1	139.72	3.305		
10,800.0	7,210.0	10,998.7	7,249.8	74.3	76.8	-94.95	-3,613.6	1,567.1	461.6	318.0	143.55	3.216		
10,900.0	7,210.0	11,098.7	7,247.1	76.1	78.6	-94.61	-3,713.5	1,567.6	461.3	314.0	147.38	3.130		
11,000.0	7,210.0	11,198.6	7,244.3	77.9	80.3	-94.27	-3,813.5	1,568.1	461.1	309.9	151.22	3.049		
11,100.0	7,210.0	11,298.6	7,241.5	79.7	82.1	-93.92	-3,913.4	1,568.7	460.9	305.8	155.06	2.972		
11,200.0	7,210.0	11,398.6	7,238.8	81.6	83.9	-93.58	-4,013.3	1,569.2	460.7	301.8	158.90	2.899		
11,300.0	7,210.0	11,498.5	7,236.0	83.4	85.7	-93.24	-4,113.2	1,569.8	460.5	297.8	162.75	2.830		
11,400.0	7,210.0	11,598.5	7,233.3	85.2	87.5	-92.90	-4,213.1	1,570.3	460.4	293.8	166.60	2.763		
11,500.0	7,210.0	11,698.5	7,230.5	87.1	89.3	-92.55	-4,313.1	1,570.9	460.2	289.8	170.45	2.700		
11,600.0	7,210.0	11,798.4	7,227.8	88.9	91.1	-92.21	-4,413.0	1,571.4	460.1	285.8	174.30	2.640		
11,700.0	7,210.0	11,898.4	7,225.0	90.8	92.9	-91.87	-4,512.9	1,572.0	460.0	281.9	178.14	2.582		
11,800.0	7,210.0	11,998.3	7,222.2	92.6	94.7	-91.53	-4,612.8	1,572.5	459.9	277.9	181.99	2.527		
11,809.4	7,210.0	12,007.3	7,222.0	92.8	94.9	-91.50	-4,621.8	1,572.6	459.9	277.6	182.34	2.522		
11,814.1	7,210.0	12,007.3	7,222.0	92.9	94.9	-91.50	-4,621.8	1,572.6	459.9	277.5	182.43	2.521 SF		

Reference Depths are relative to WELL @ 4912.0ft (RKB-12')	Coordinates are relative to: SRC Leffler 24-26NHZ
Offset Depths are relative to Offset Datum	Coordinate System is US State Plane 1983, Colorado Northern Zone
Central Meridian is -105.500000 °	Grid Convergence at Surface is: 0.48°



Company:	Synergy Resources	Local Co-ordinate Reference:	Well SRC Leffler 24-26NHZ
Project:	SEC.26-T7N-R66W	TVD Reference:	WELL @ 4912.0ft (RKB-12')
Reference Site:	SRC Leffler 14-26NHZ Pad Sec.26-T7N-R66W	MD Reference:	WELL @ 4912.0ft (RKB-12')
Site Error:	0.0ft	North Reference:	True
Reference Well:	SRC Leffler 24-26NHZ	Survey Calculation Method:	Minimum Curvature
Well Error:	0.0ft	Output errors are at	2.00 sigma
Reference Wellbore	Wellbore #1	Database:	Landmark
Reference Design:	Plan #2 (8-08-13)	Offset TVD Reference:	Offset Datum

Reference Depths are relative to WELL @ 4912.0ft (RKB-12')

Offset Depths are relative to Offset Datum

Central Meridian is -105.500000 °

Coordinates are relative to: SRC Leffler 24-26NHZ

Coordinate System is US State Plane 1983, Colorado Northern Zone

Grid Convergence at Surface is: 0.48°

