



SUPERIOR
Black Lick, Pa.
Mercer, Pa.
Wooster, Ohio
Cleveland, Ok.

GAMMA RAY C.C.L.
CEMENT BOND V.D.L.

Company NOBLE ENERGY INC.
Well BERG 01
Field WATTENBERG
County WELD
State COLORADO

Company NOBLE ENERGY INC.
Well BERG 01
Field WATTENBERG
County WELD State COLORADO

Location: API #: 05-123-11280

NE NE

SEC 15 TWP 6N RGE 66W

Permanent Datum GL
Log Measured From KB
Drilling Measured From KB
Elevation 4790

Other Services
K.B. 4790
D.F.
G.L. 4777

Date 06-NOV-09

Run Number		ONE							
Depth Driller									
Depth Logger		4300							
Bottom Logged Interval		4300							
Top Log Interval		SURFACE							
Open Hole Size									
Type Fluid		WATER							
Density / Viscosity									
Max. Recorded Temp.									
Estimated Cement Top		SURFACE							
Time Well Ready		ENSGIN 353							
Time Logger on Bottom		1-11/16 #2							
Equipment Number		703							
Location		45							
Recorded By		LEROY HOBBS							
Witnessed By		CASEY RUPPEL							
Run Number	Borehole Record				Tubing Record				
	Bit	From	To	Size		Weight	From	To	

<<< Fold Here >>>

All interpretations are opinions based on inferences from electrical or other measurements and we cannot and do not guarantee the accuracy or correctness of any interpretation, and we shall not, except in the case of gross or willful negligence on our part, be liable or responsible for any loss, costs, damages, or expenses incurred or sustained by anyone resulting from any interpretation made by any of our officers, agents or employees. These interpretations are also subject to our general terms and conditions set out in our current Price Schedule.

Comments

THIS LOG IS NOT CORRECTED!!!!!!!!!!!!

THANK YOU FOR USING SUPERIOR WELL SERVICES.

HWY 392 & WCR 33, NORTH .4, WEST .2, NORTH INTO.

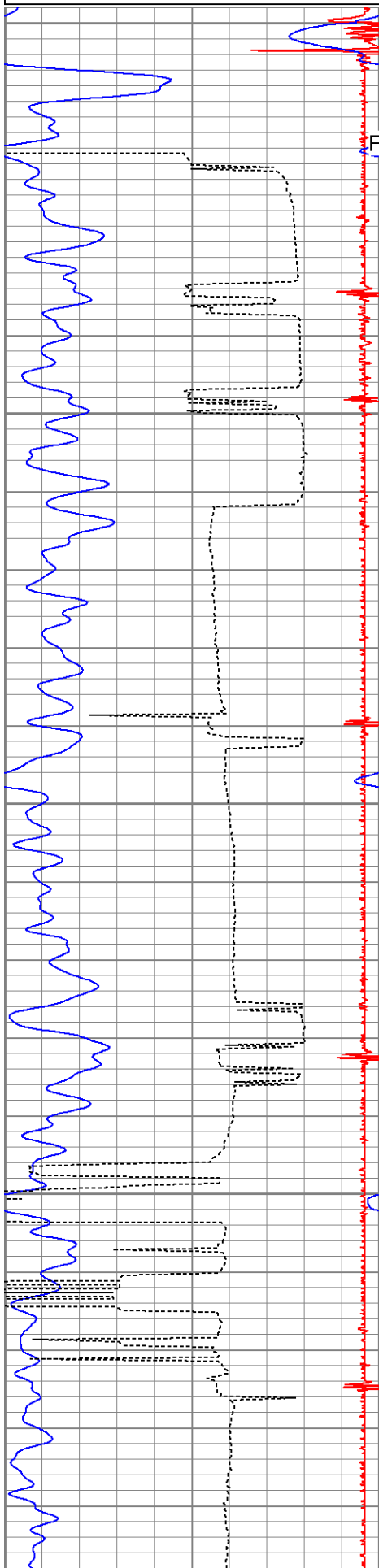
Database File: berg01annfilcbl.db
Dataset Pathname: pass2
Presentation Format: nuexcbf
Dataset Creation: Fri Nov 06 07:42:49 2009 by Log Open-Cased 071220
Charted by: Depth in Feet scaled 1:240

8	CCL	-0.3
30	Gamma Ray (GAPI)	130
340	TT3 (usec)	180

0	Amplified Amplitude (mV)	20	200
0	Amplitude (mV)	100	

V D L

1200



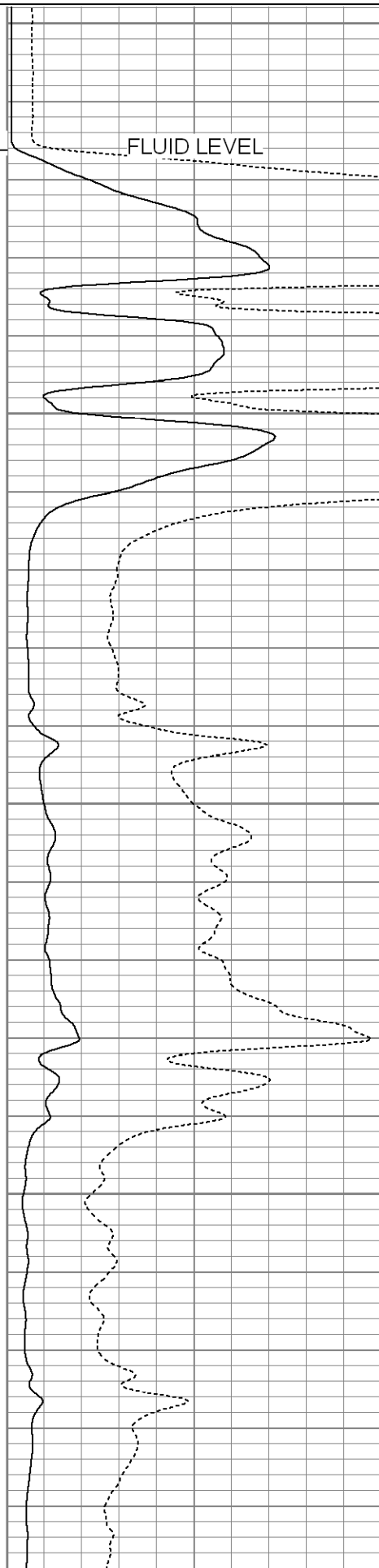
0

FLUID LEVEL

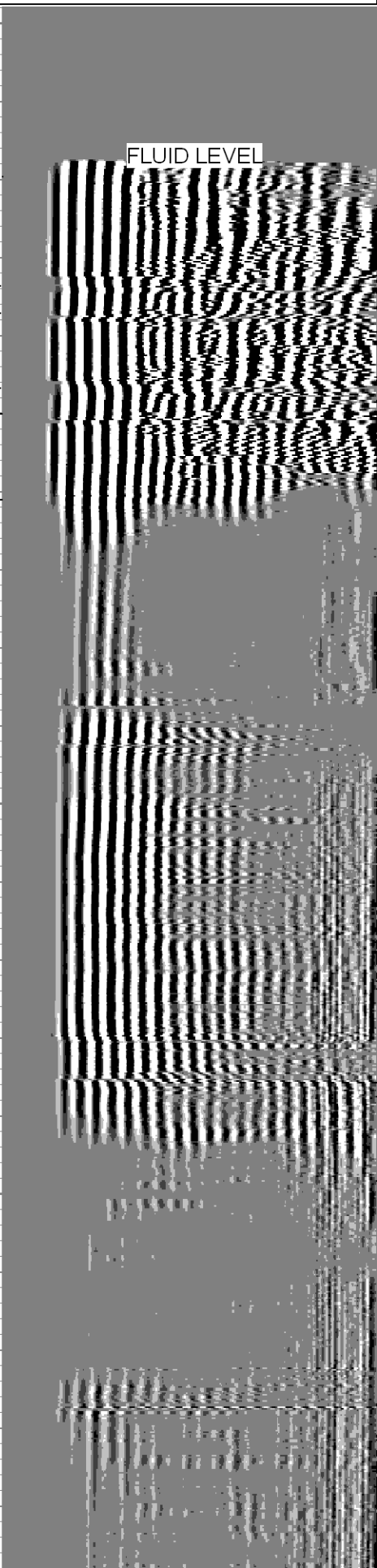
50

100

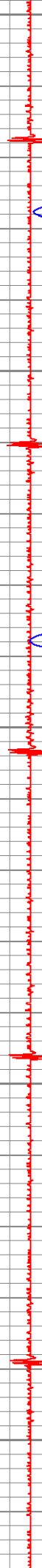
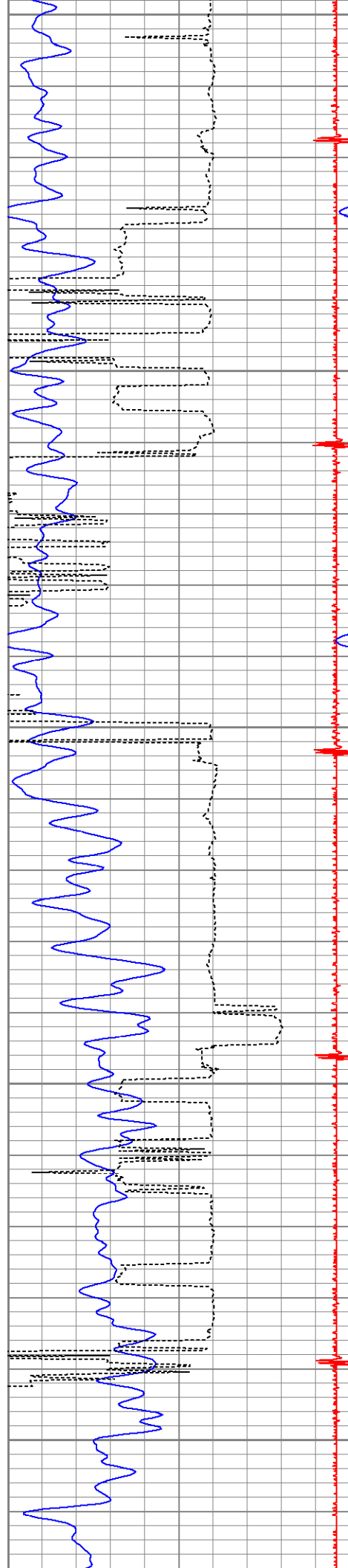
150



FLUID LEVEL



FLUID LEVEL



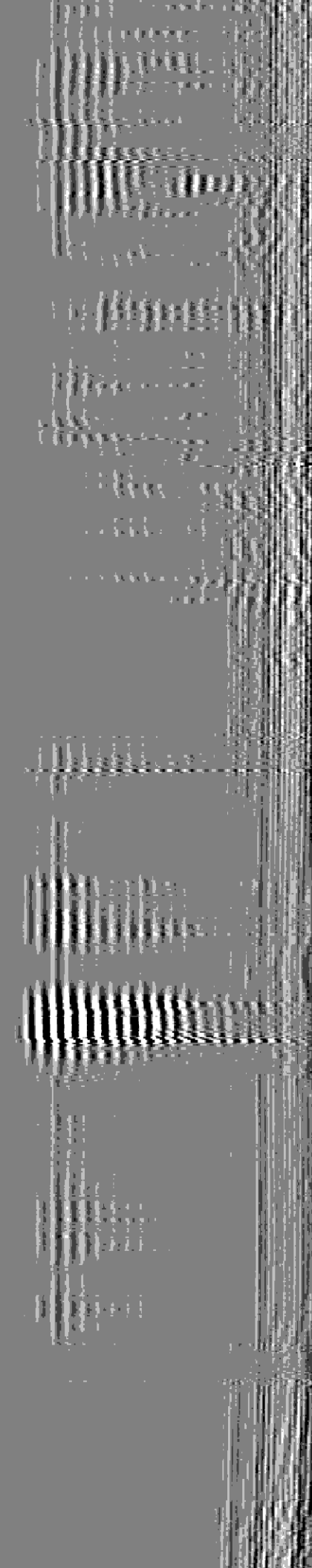
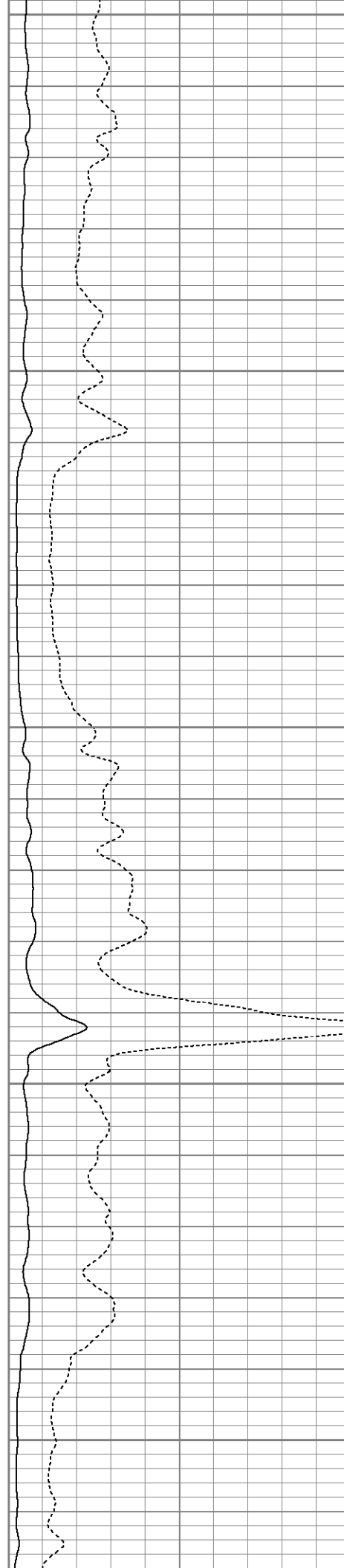
200

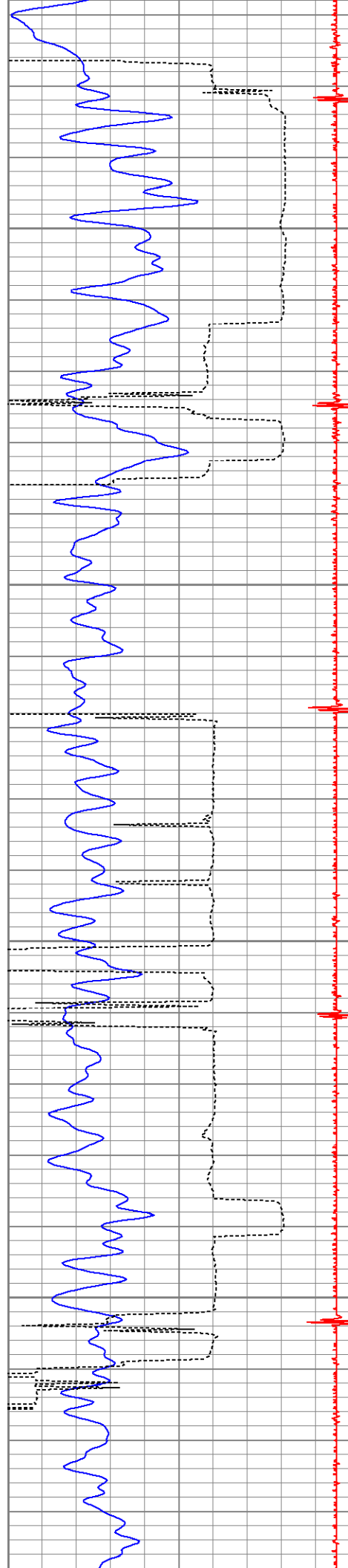
250

300

350

400



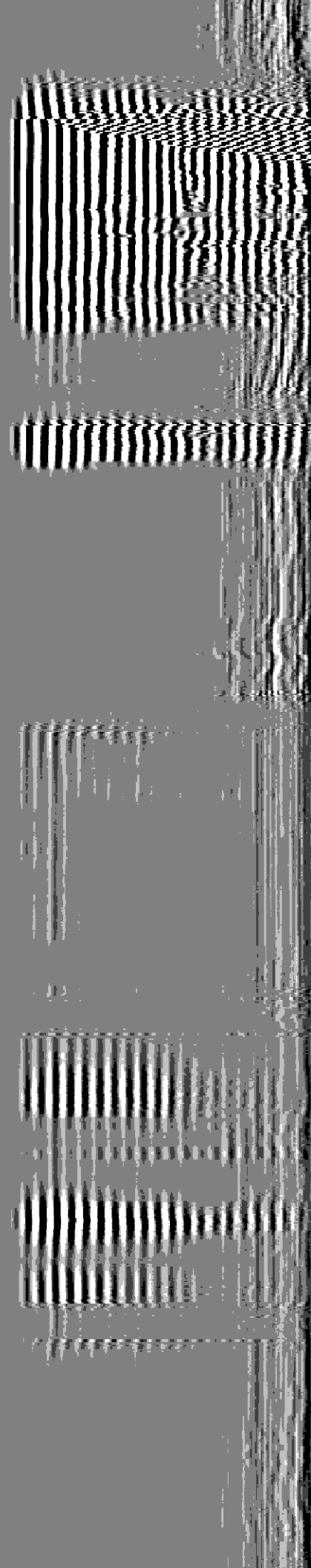
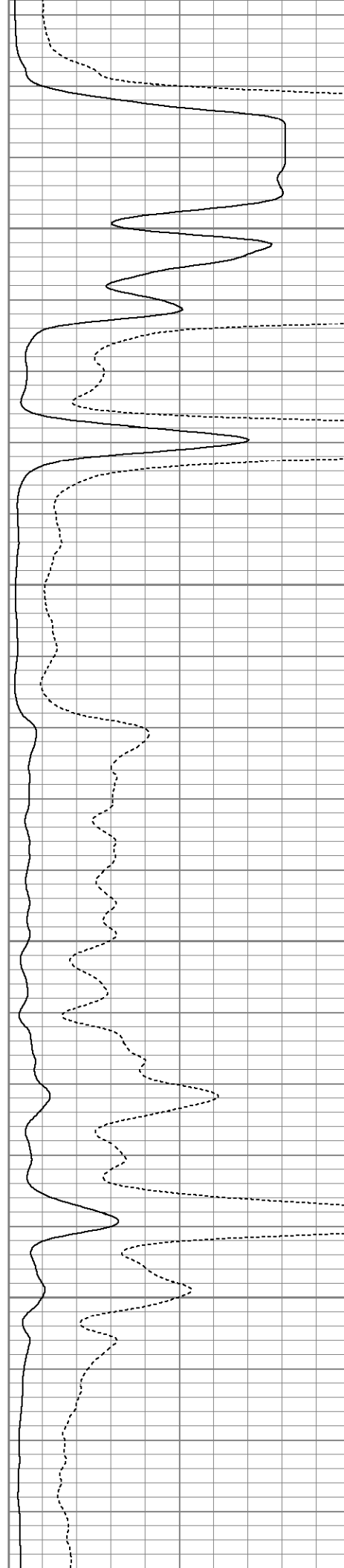


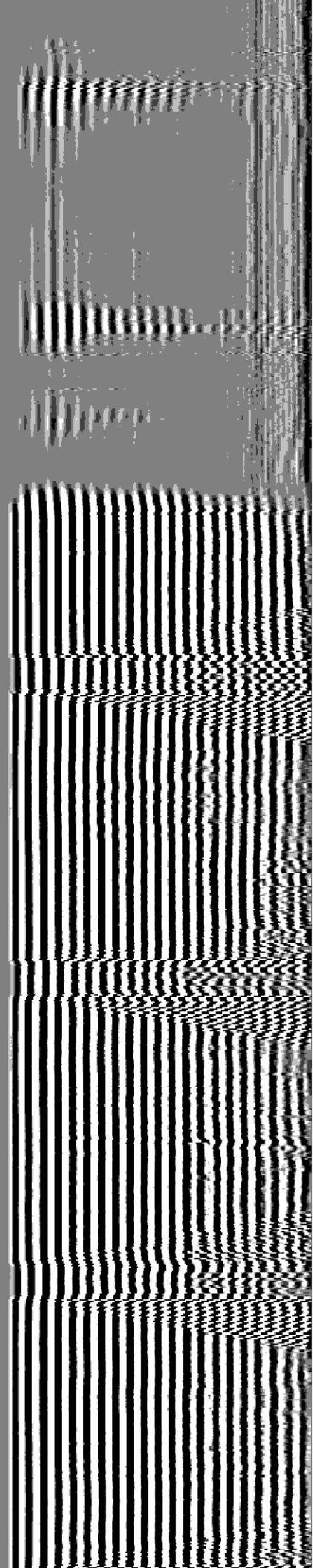
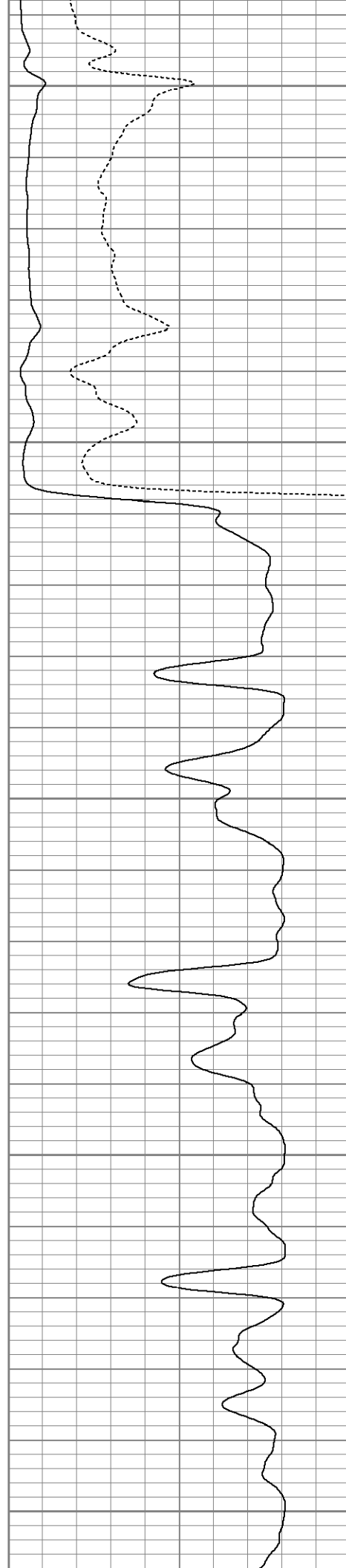
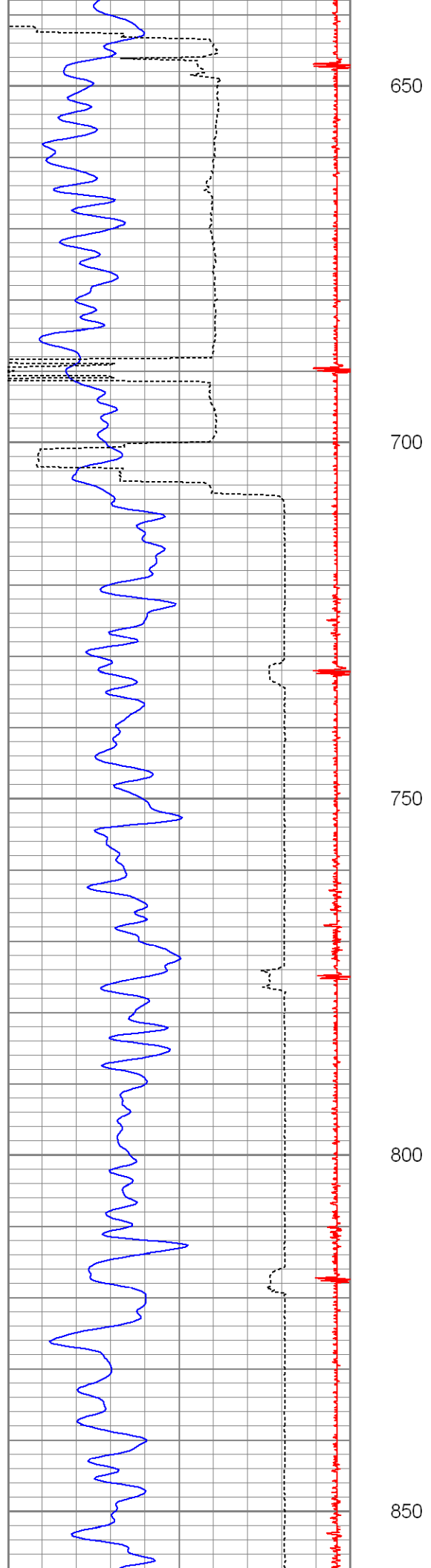
450

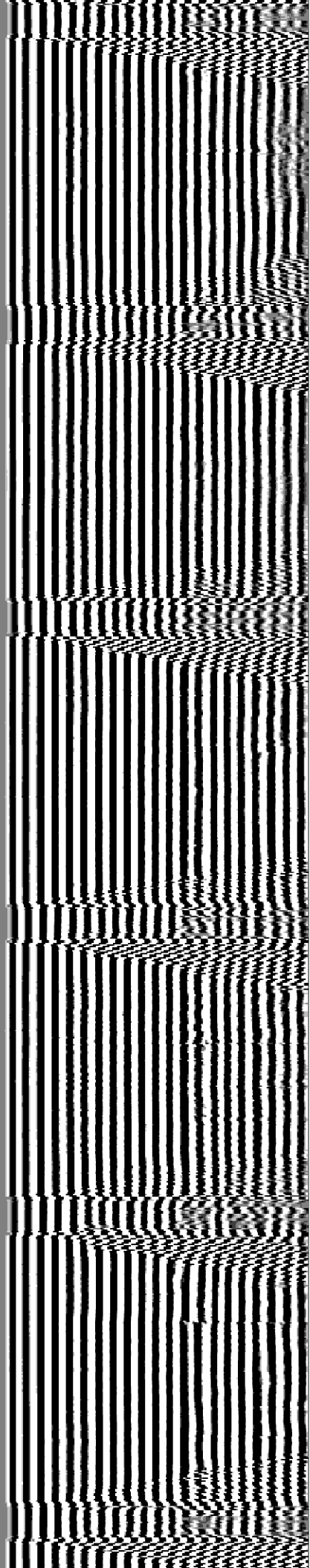
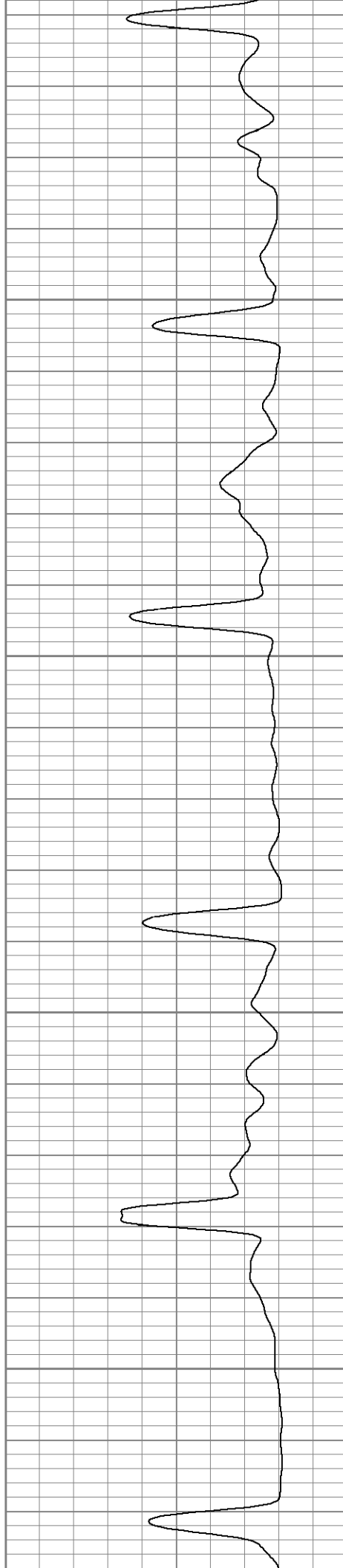
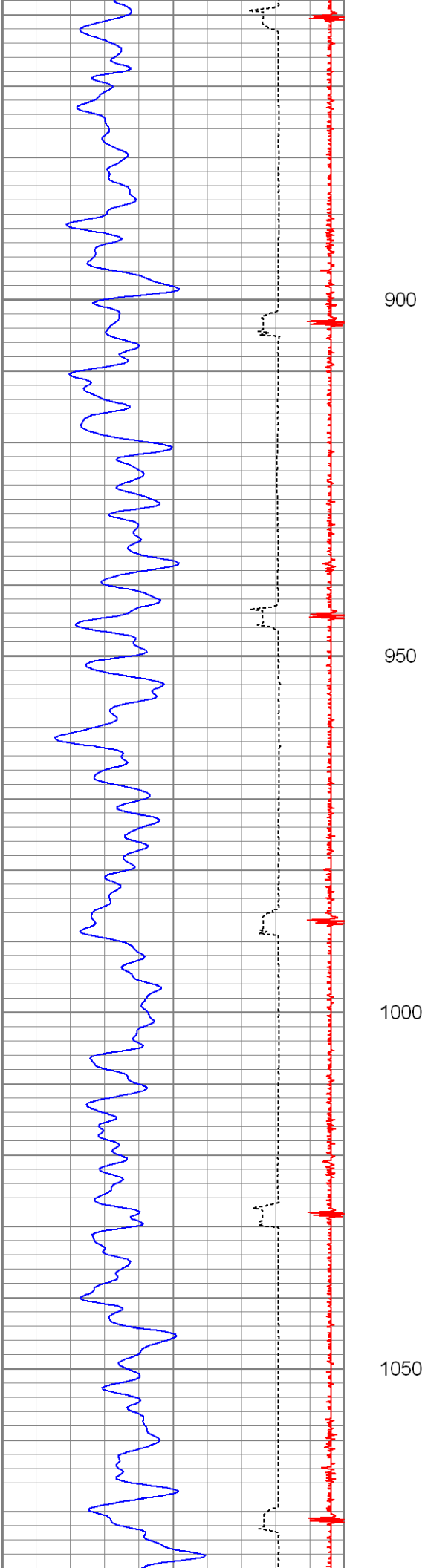
500

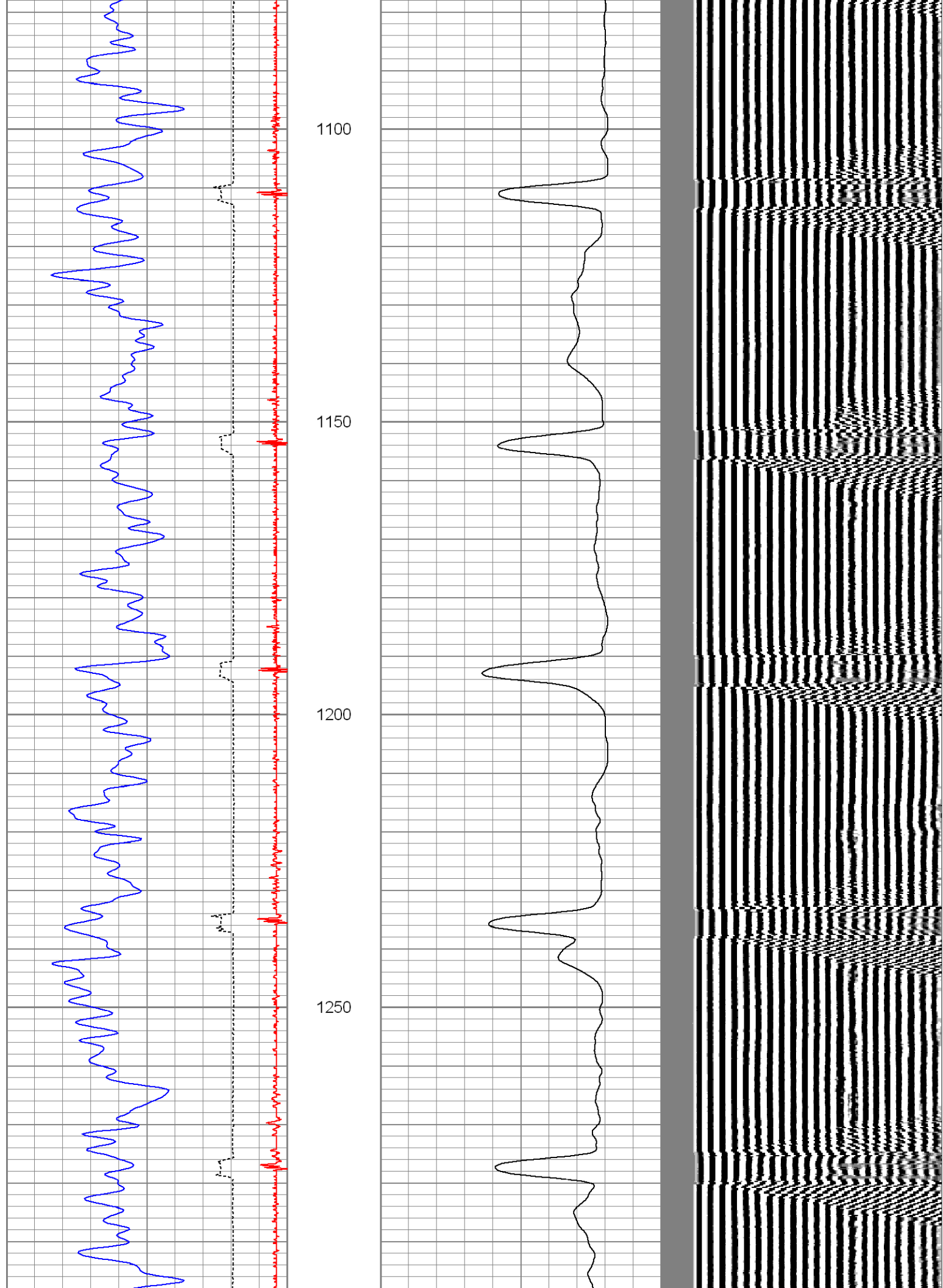
550

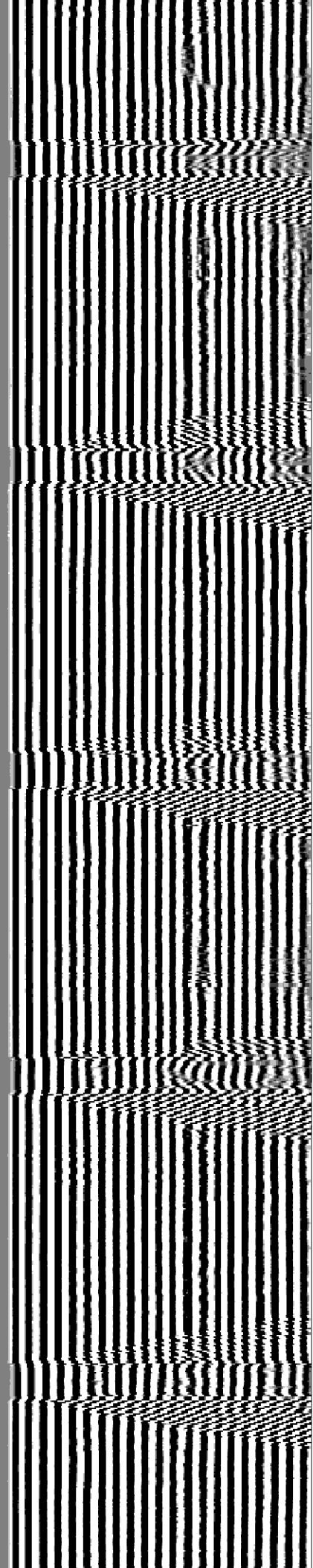
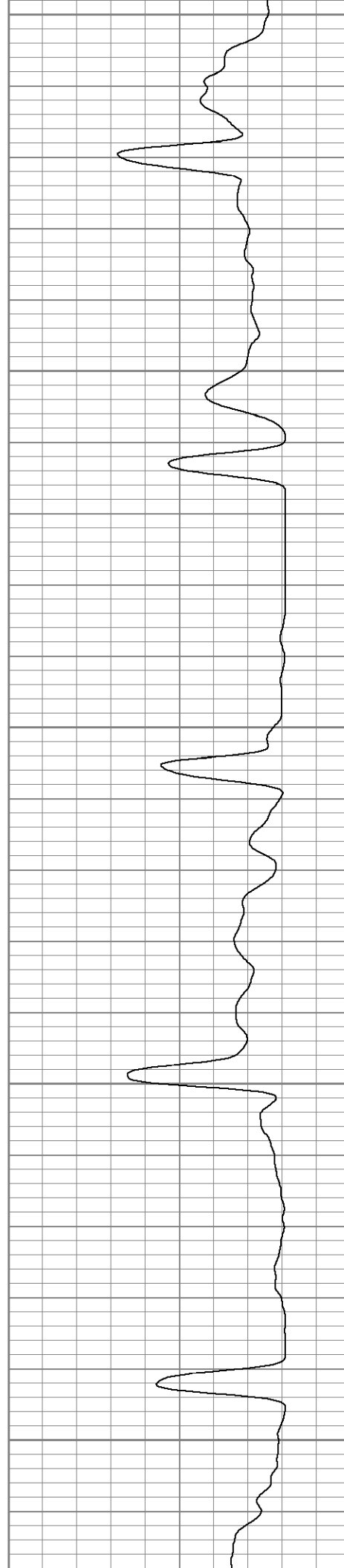
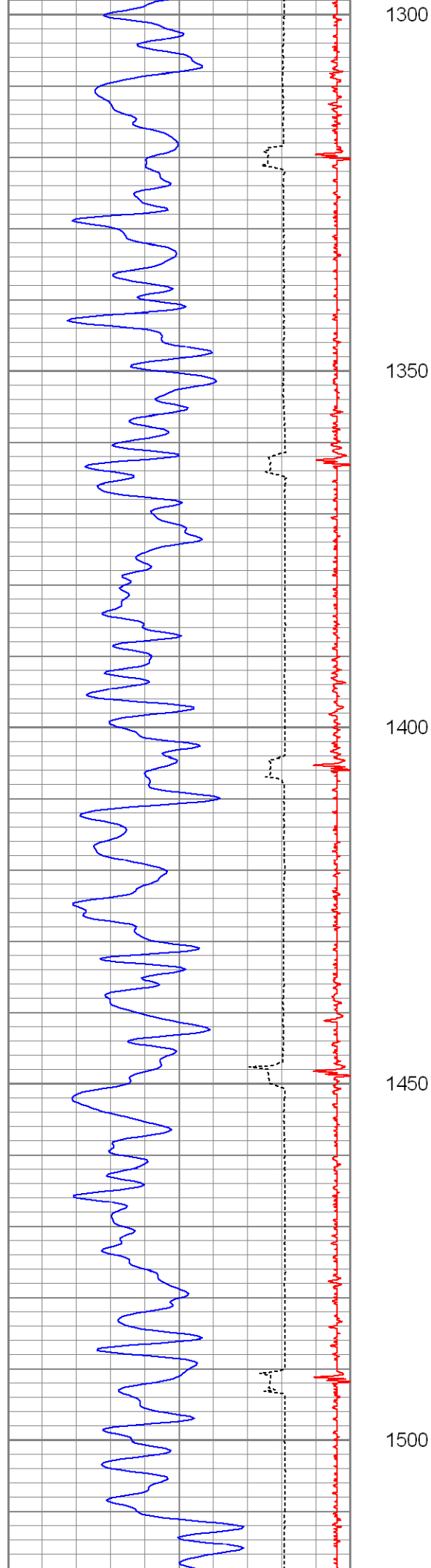
600

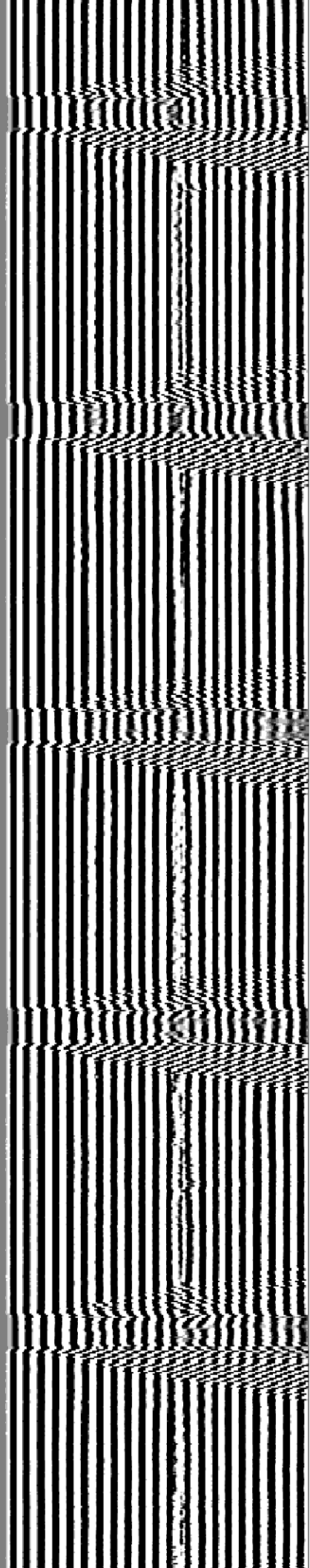
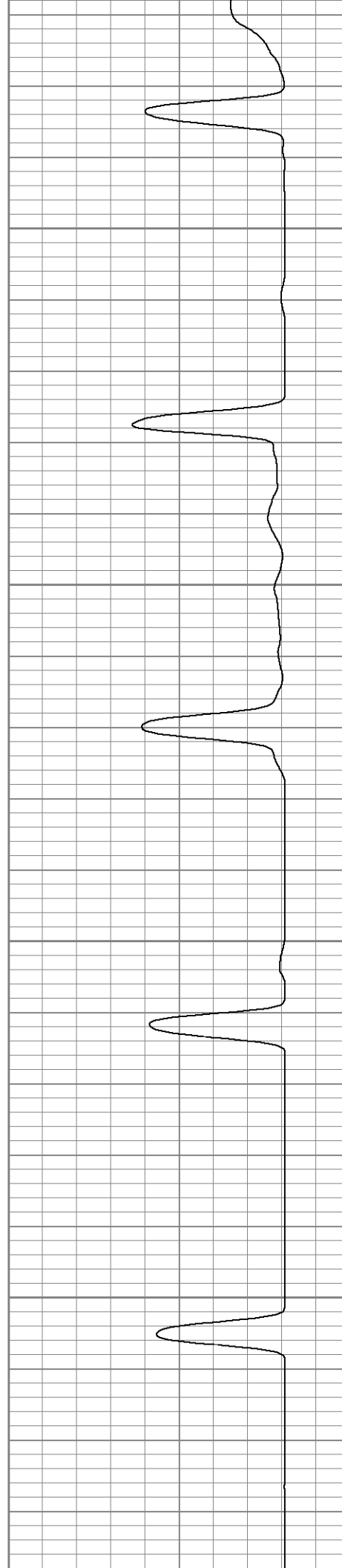
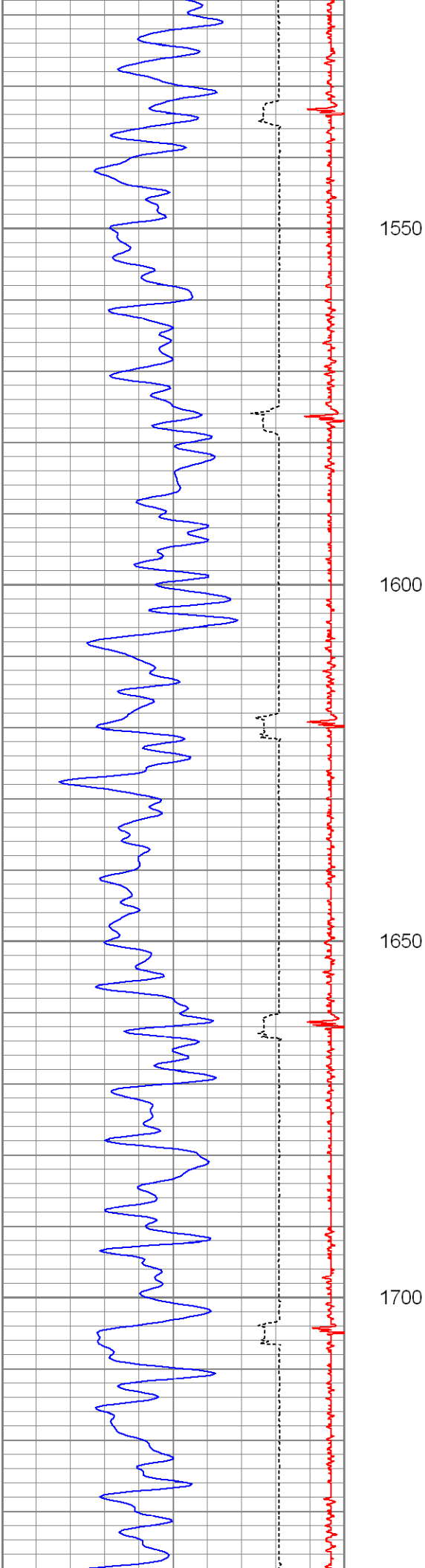


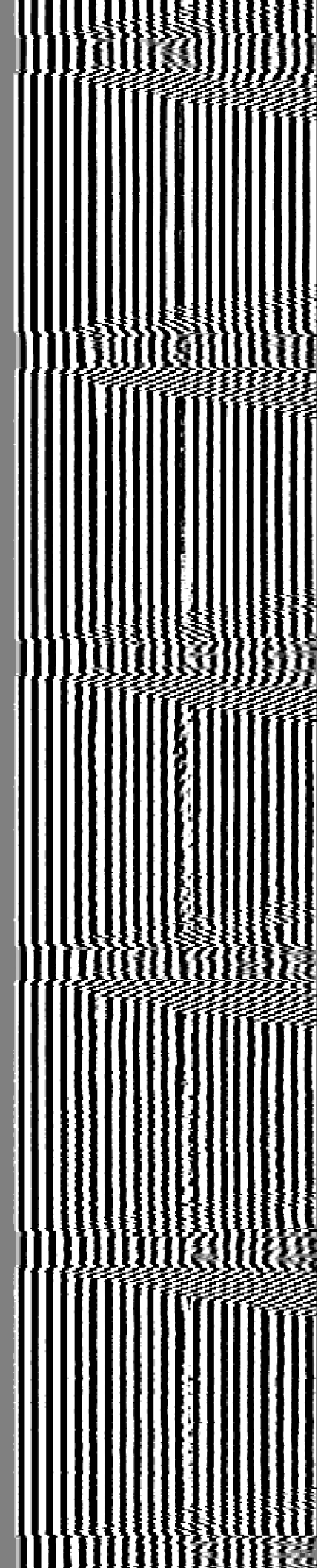
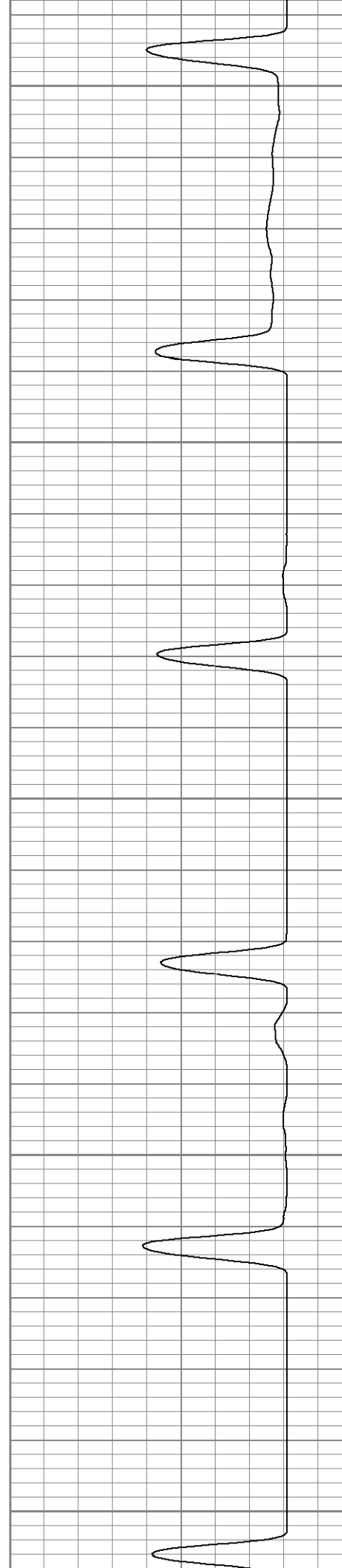
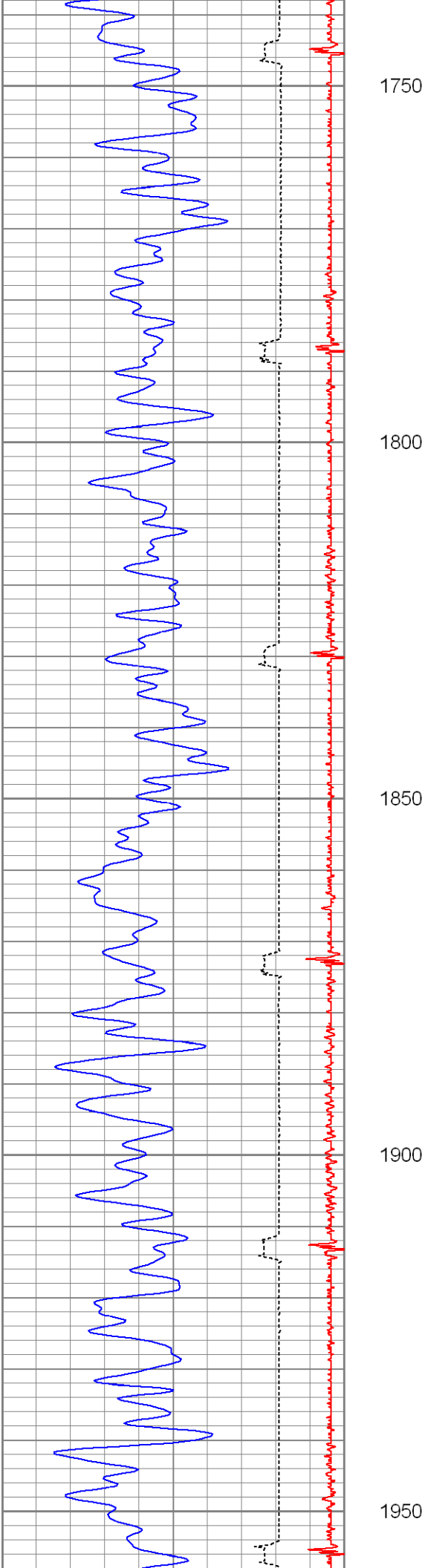


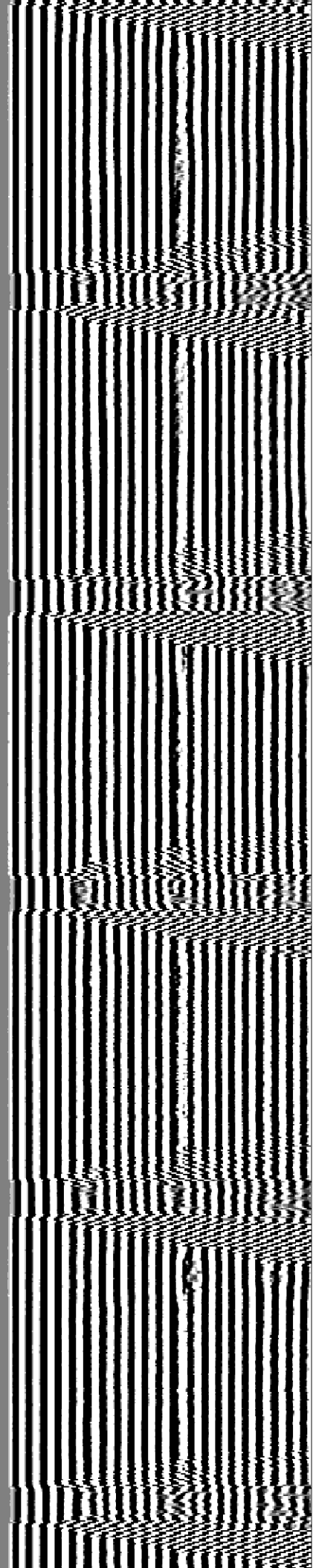
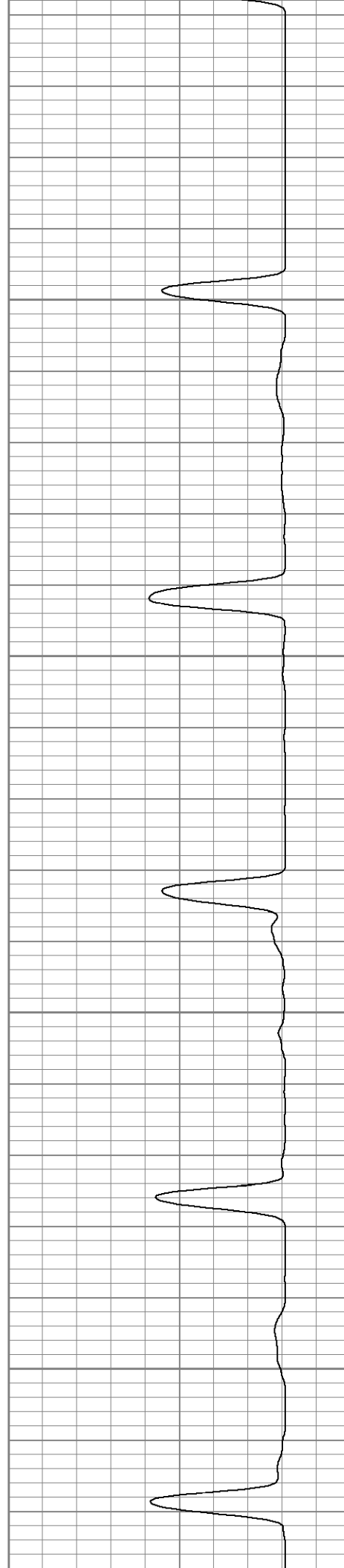
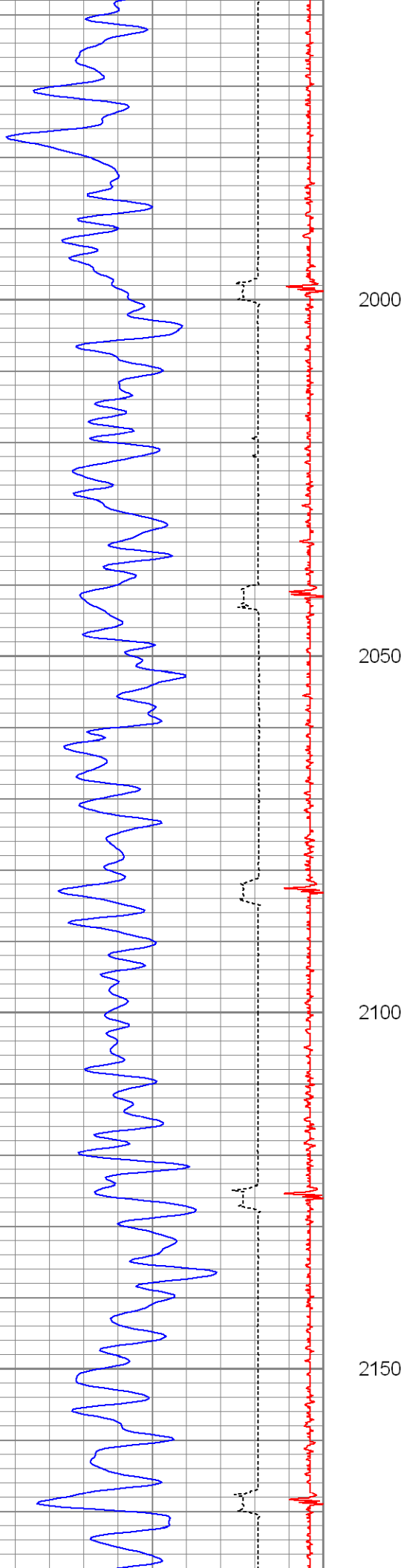


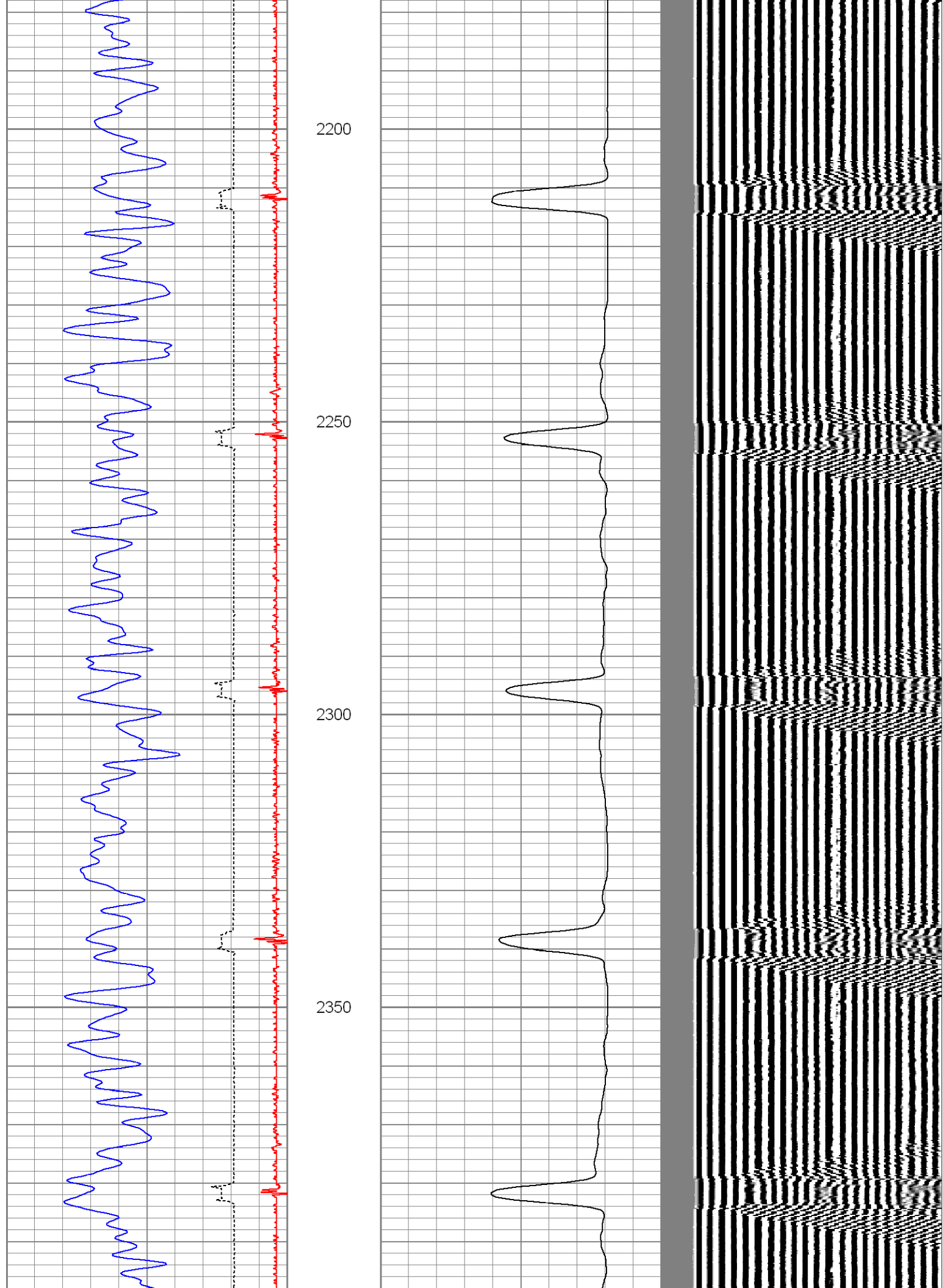


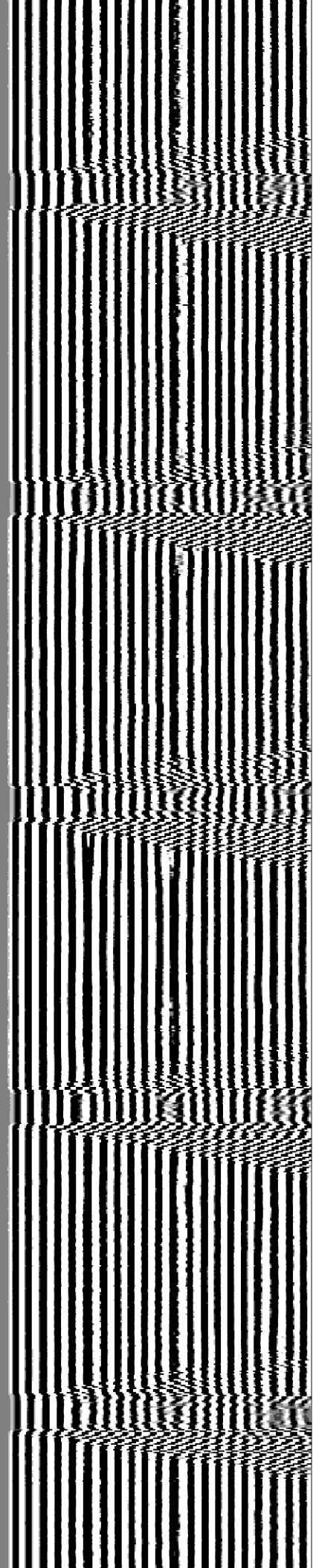
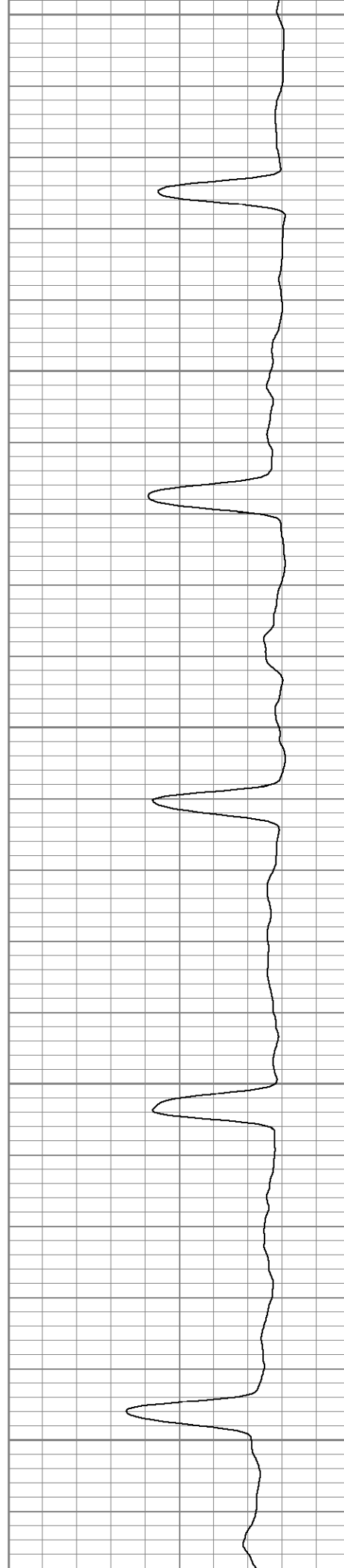
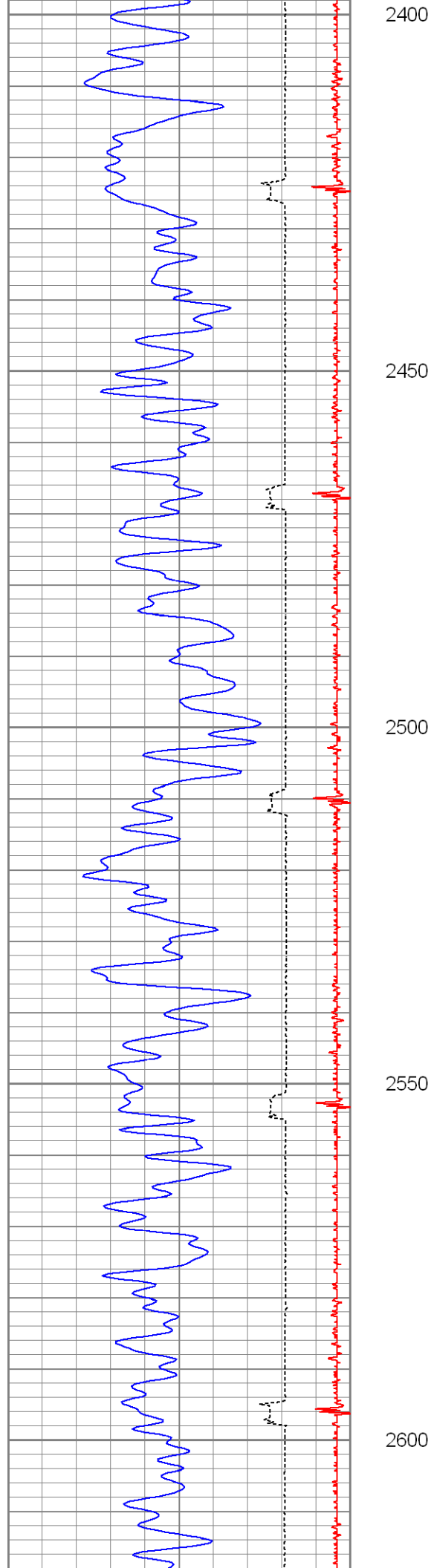


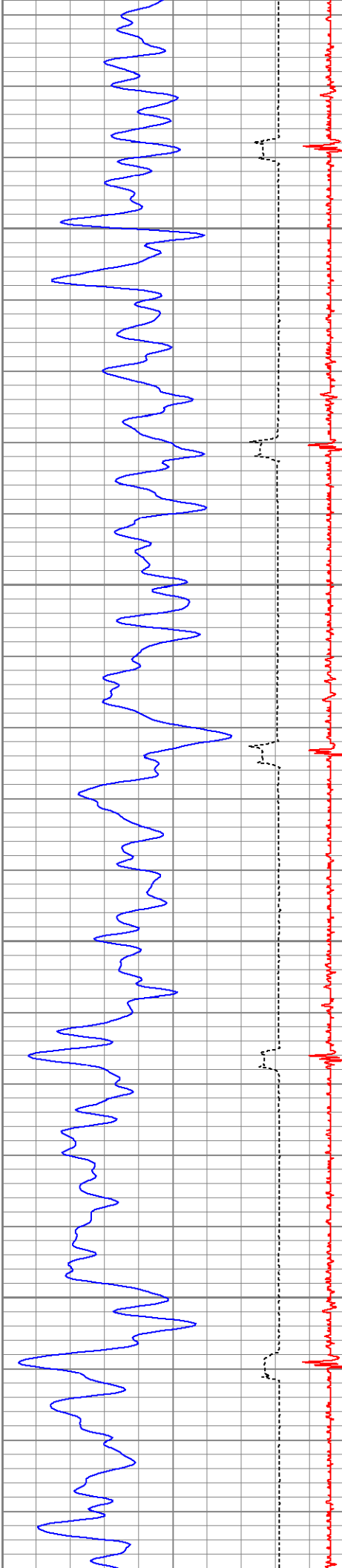










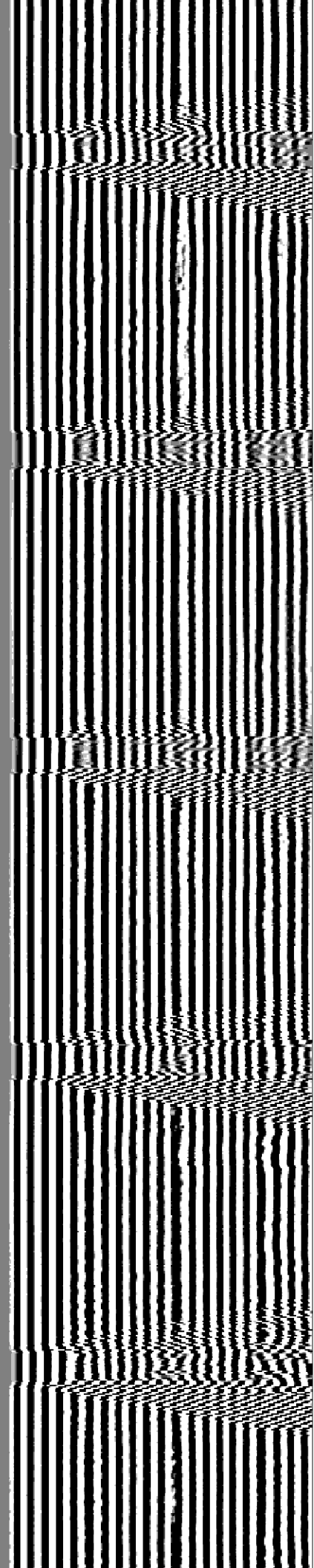
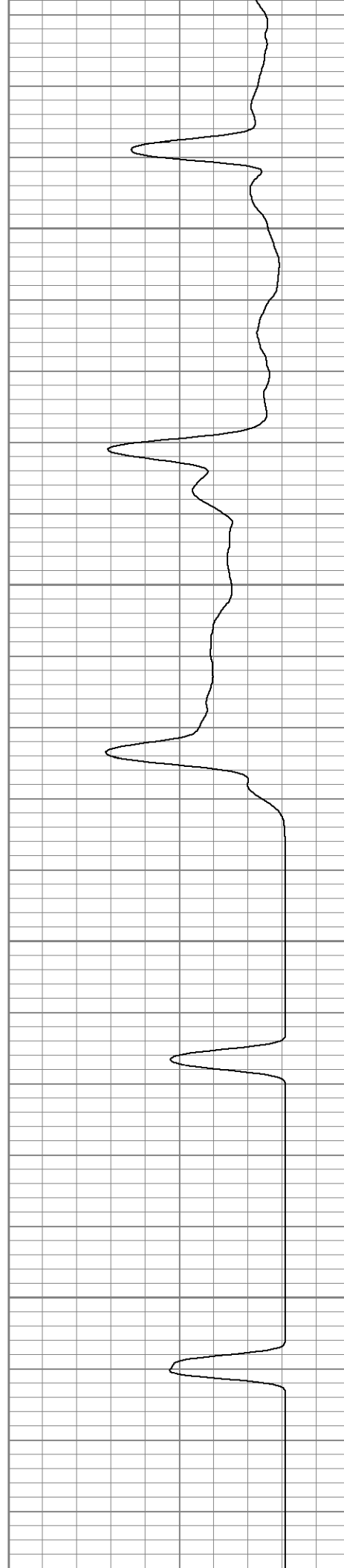


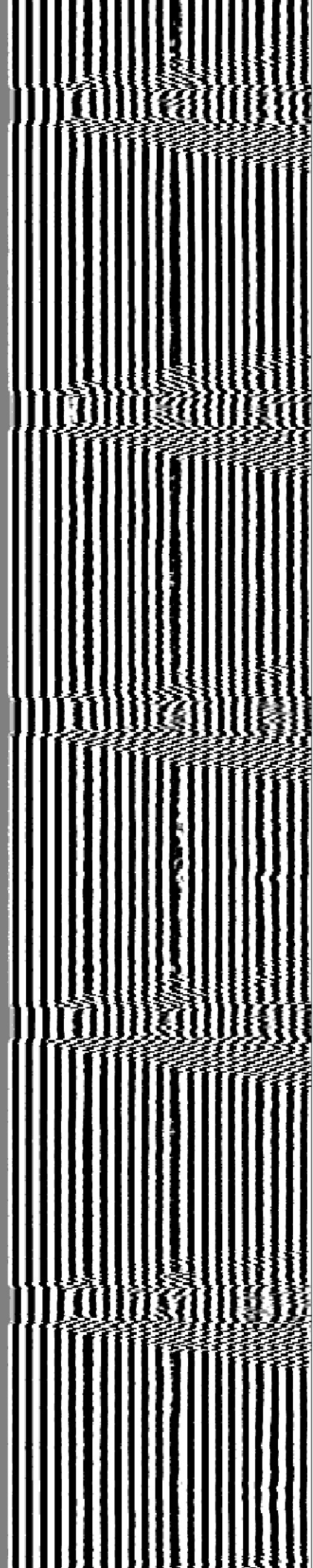
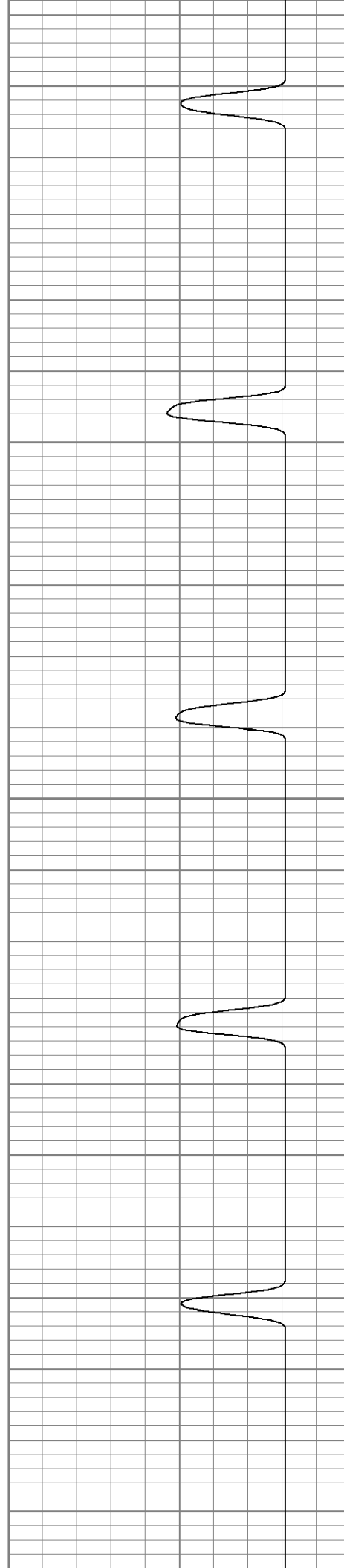
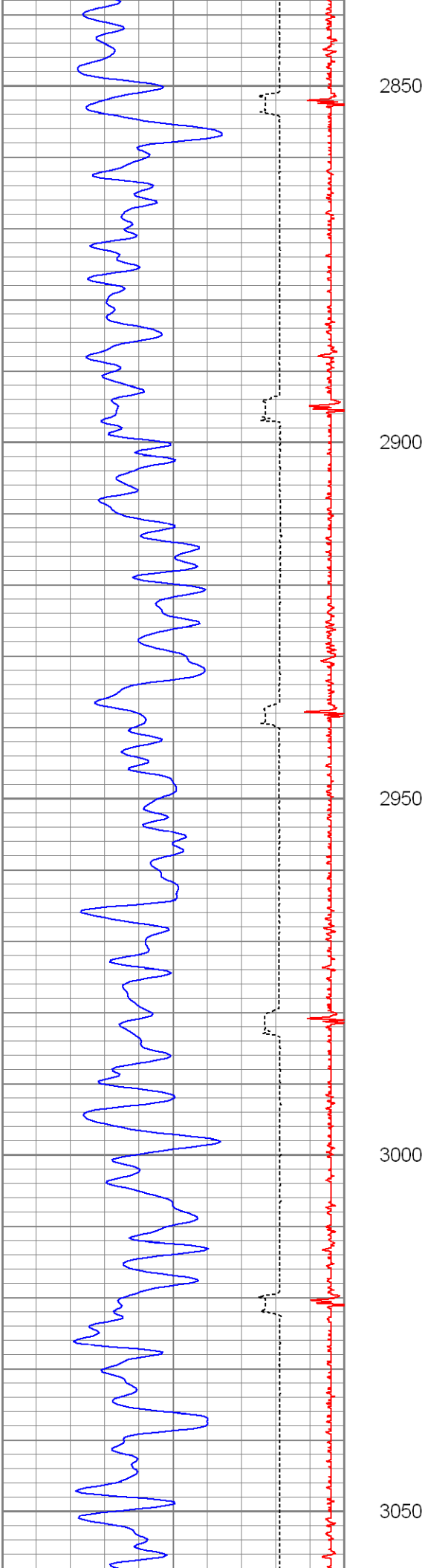
2650

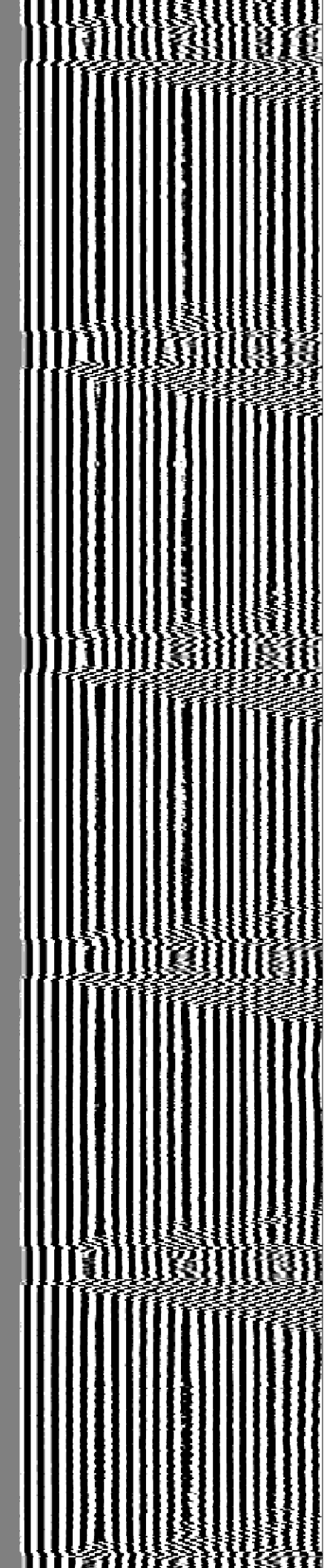
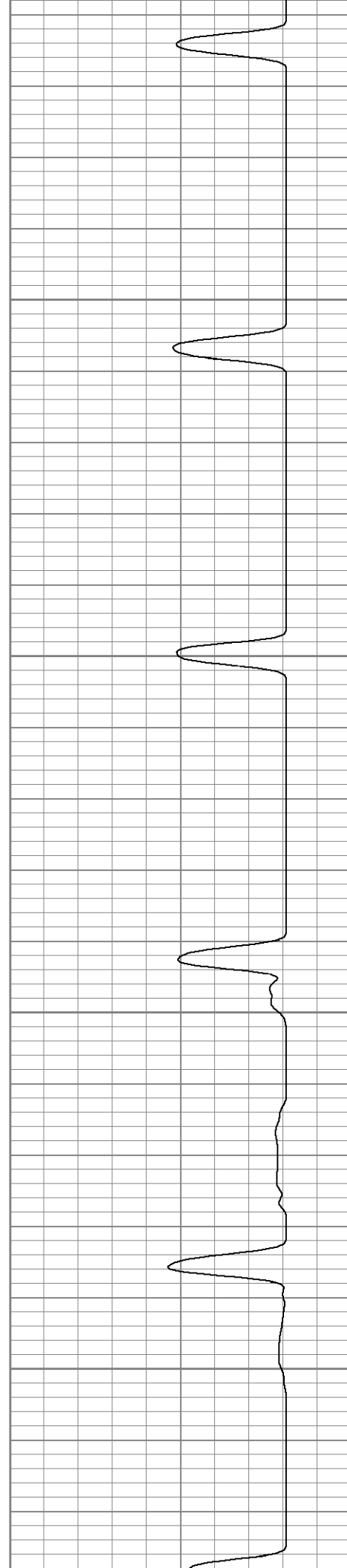
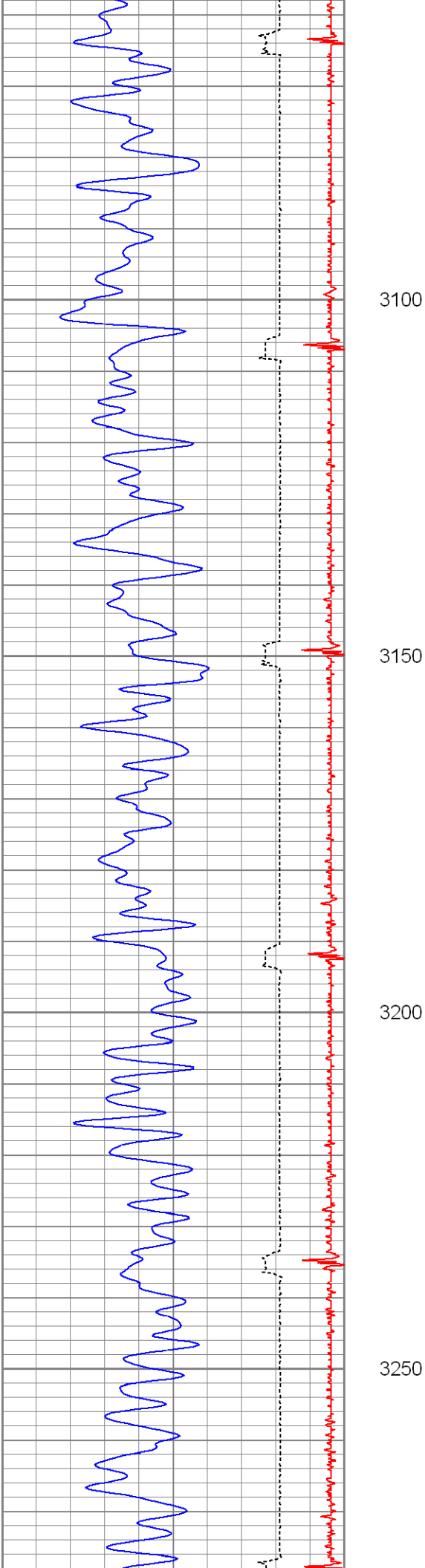
2700

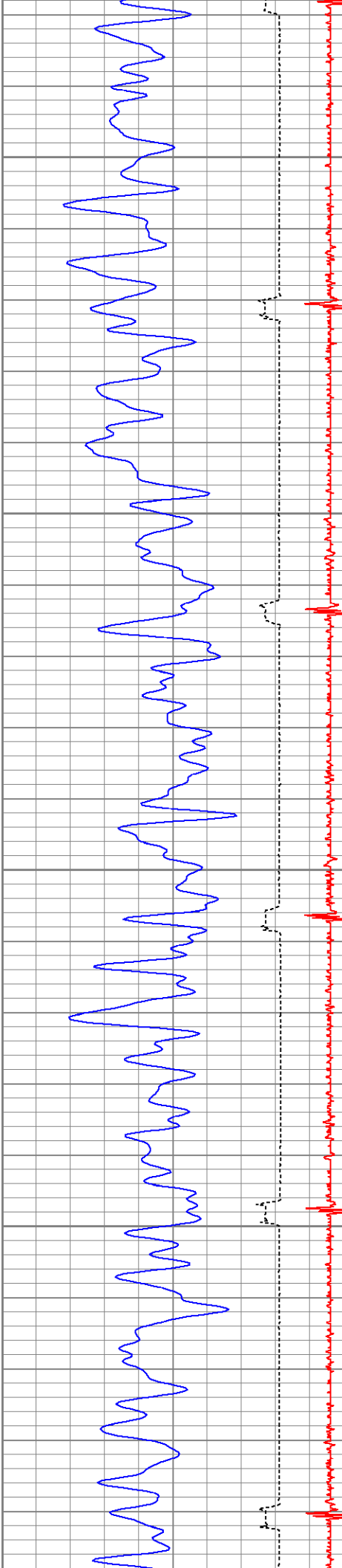
2750

2800







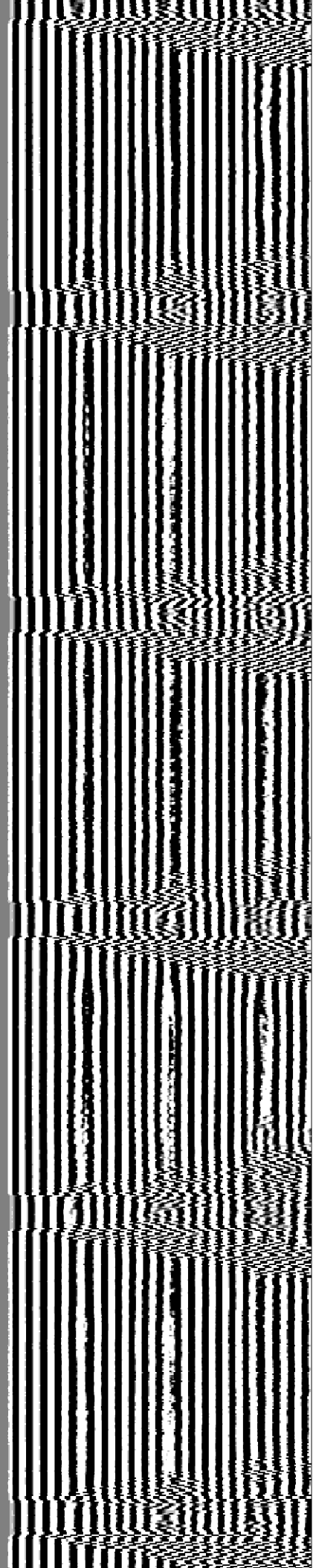
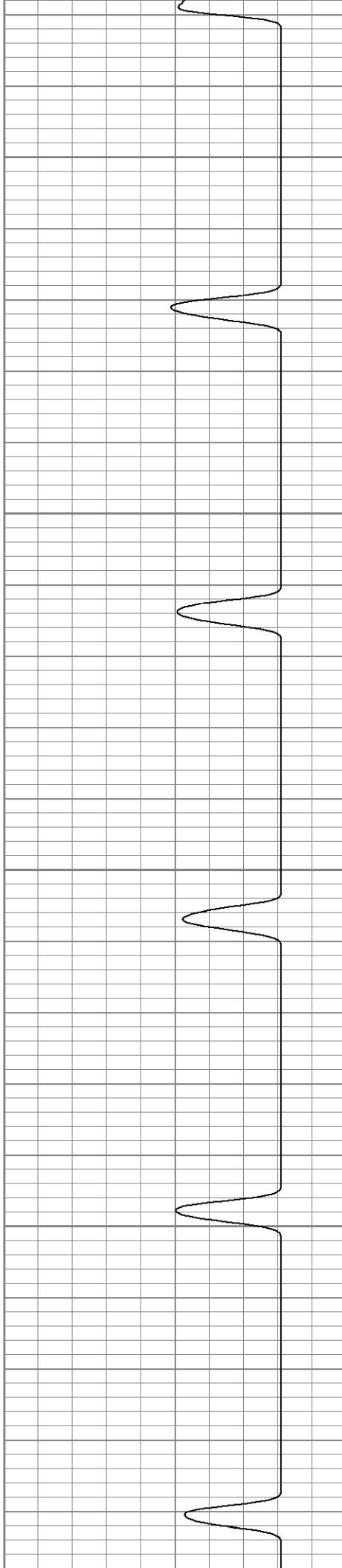


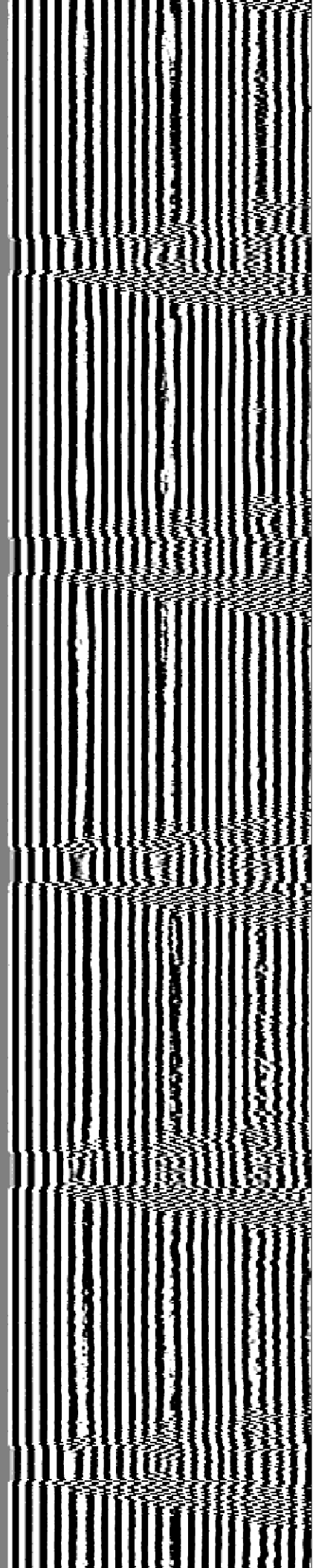
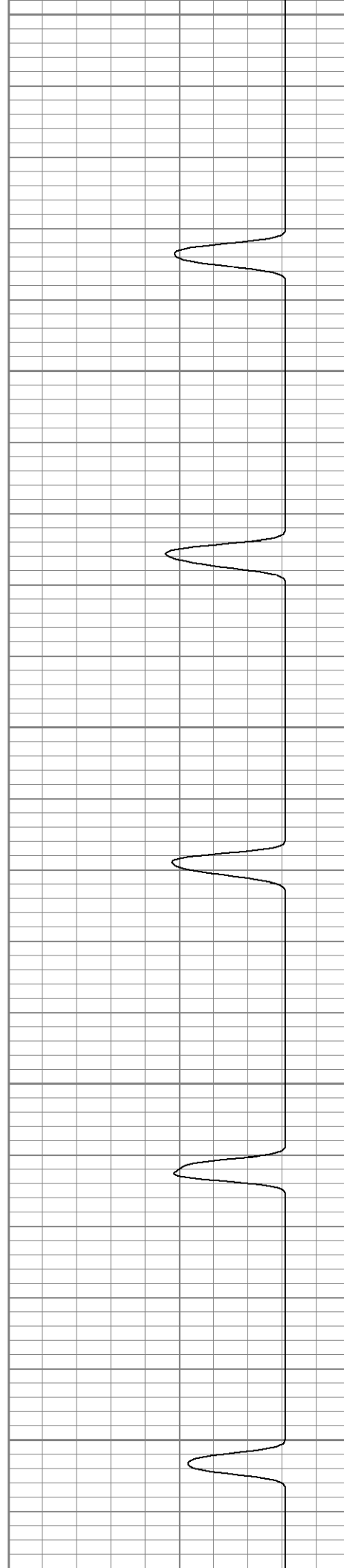
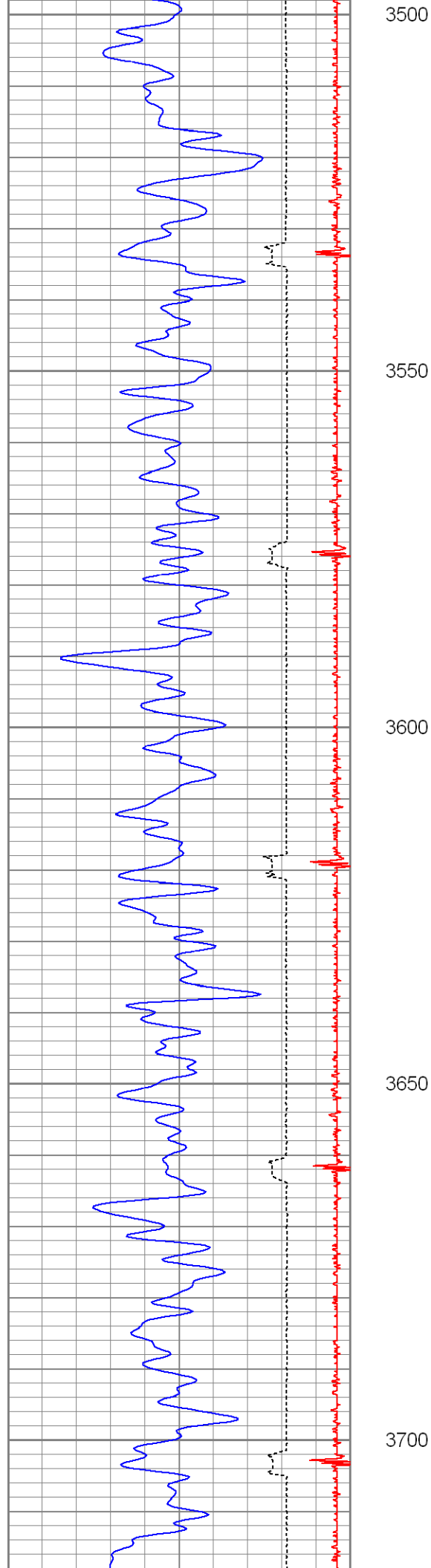
3300

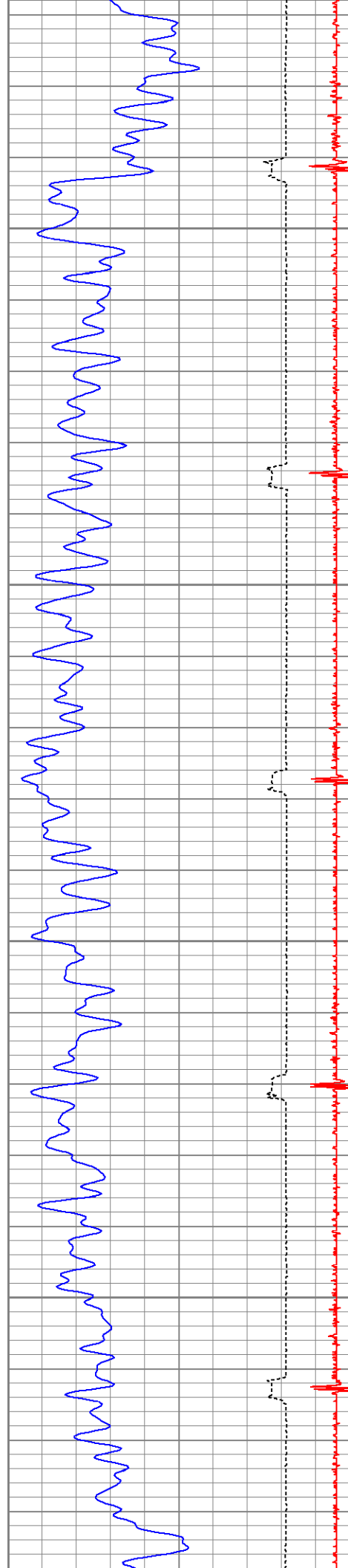
3350

3400

3450





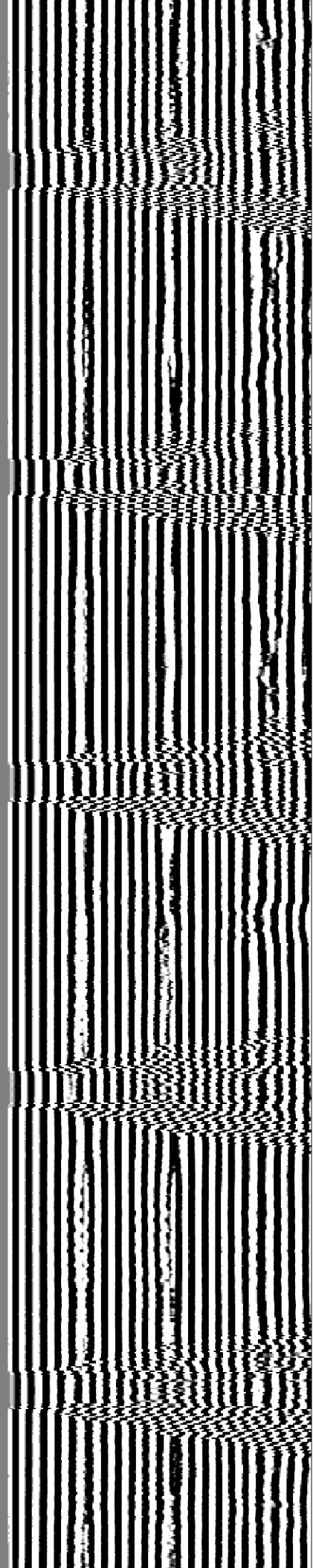
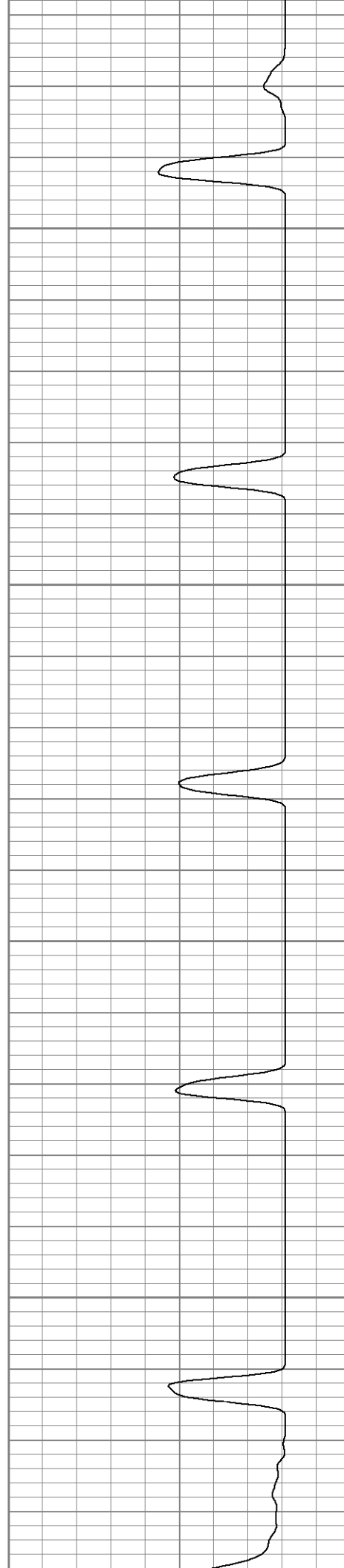


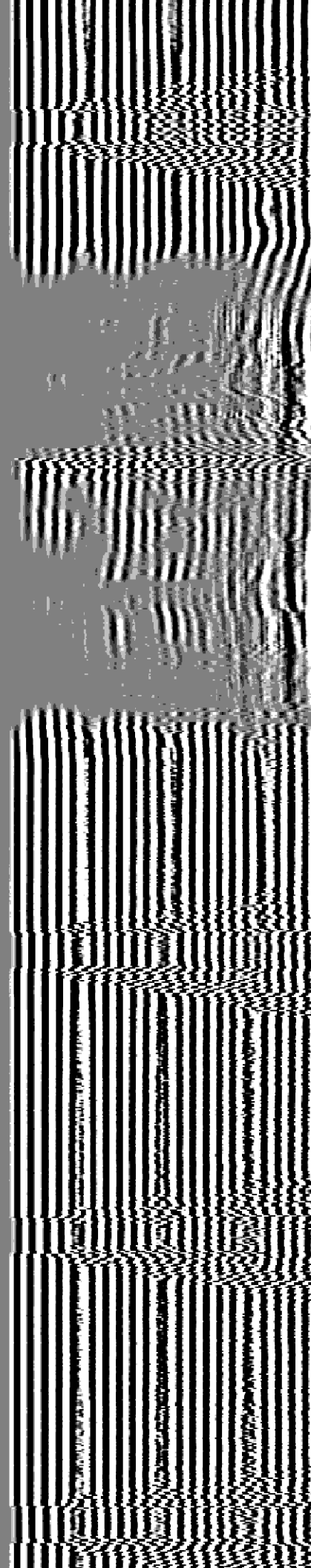
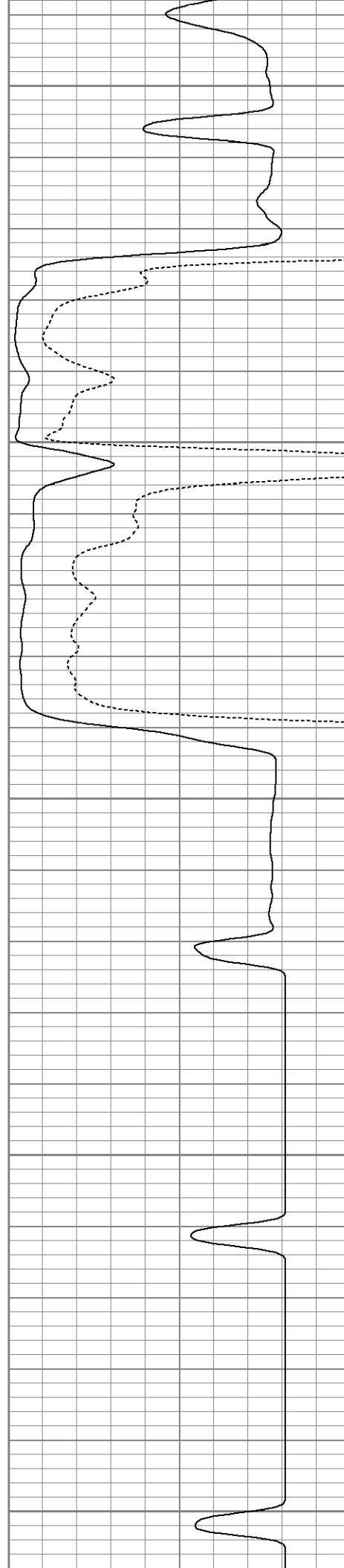
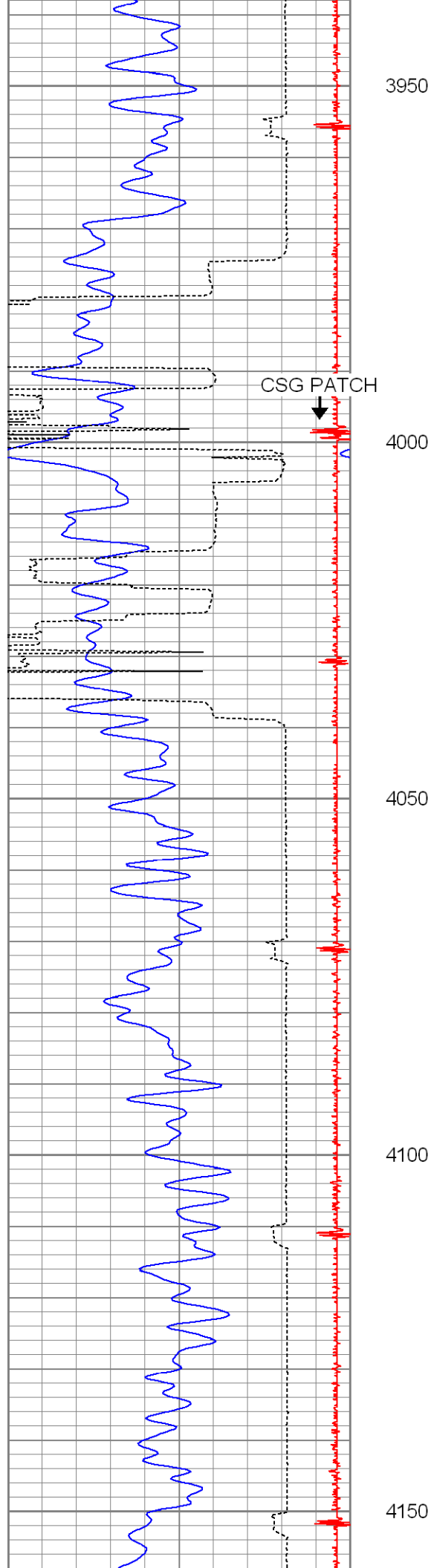
3750

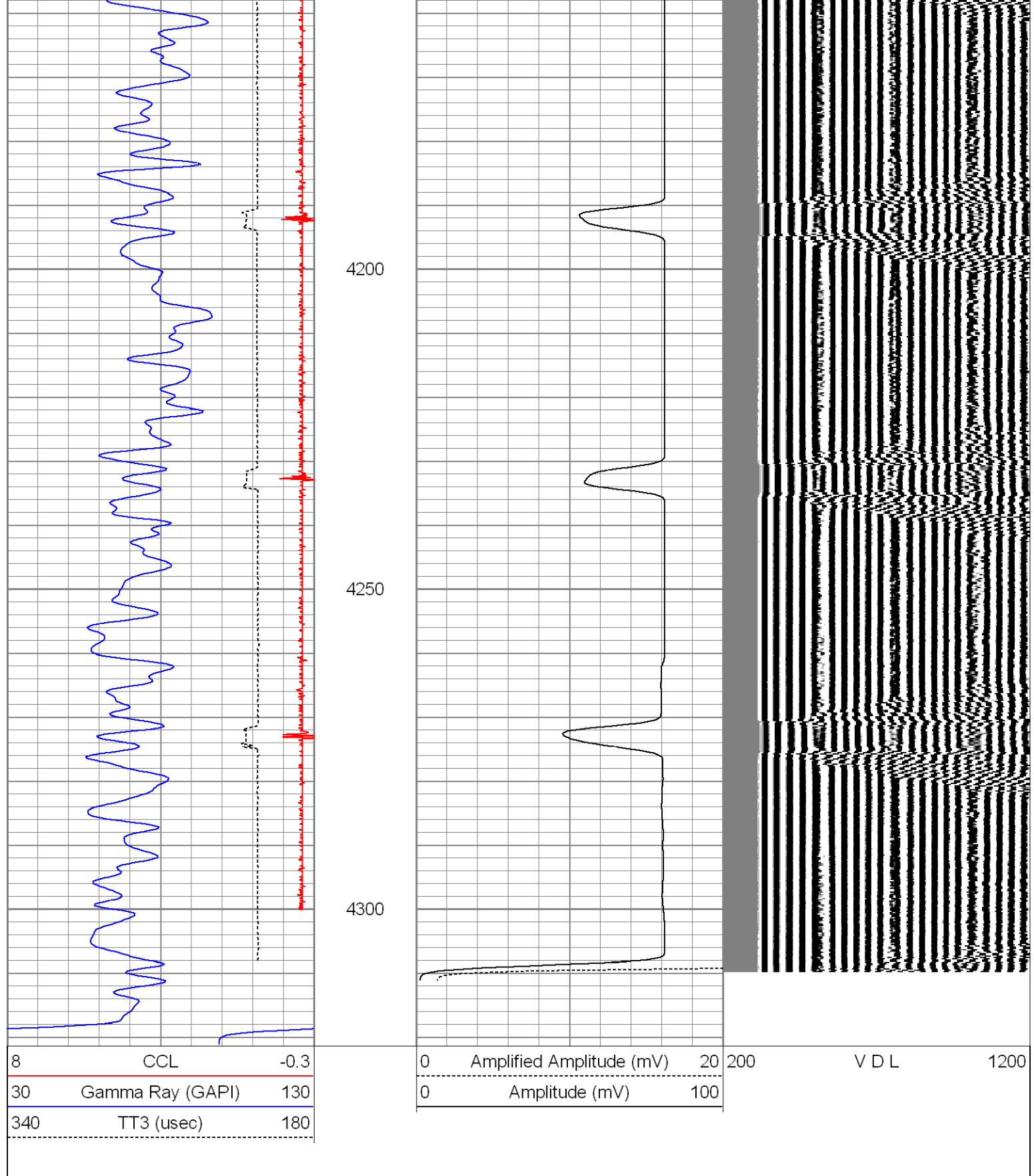
3800

3850

3900







Calibration Report

Database File: berg01annfilcbl.db
Dataset Pathname: pass2
Dataset Creation: Fri Nov 06 07:42:49 2009 by Log Open-Cased 071220

Gamma Ray Calibration Report

Serial Number: tit/temp
Tool Model: temp/tit

Performed:	Fri Nov 06 07:40:12 2009	
Calibrator Value:	1.0	GAPI
Background Reading:	0.0	cps
Calibrator Reading:	1.0	cps
Sensitivity:	0.7500	GAPI/cps

Cement Bond Log Calibration Report

Serial Number:	TEKCO-01		
Tool Model:	TEKCO-1x2		
Performed:	Thu Nov 05 10:48:42 2009		
Depth:	1372.32	ft	
Casing Diameter:	4.5	in	
	3' Spacing	5' Spacing	
Signal Zero:	1.2	1.2	mV
Calibrated Amplitude:	81.1961	81.1961	mV
Reading at Signal Zero:	-0.00595703	-0.00541992	V
Reading in Free Pipe:	2.5	2.5	V
Gain:	31.9224	31.9292	
Offset:	1.39016	1.37305	