

# BONANZA CREEK OIL COMPANY

Location: COLORADO Slot: SLOT#05 STATE NORTH PLATTE 11-14-26HC (377FNL & 956FWL,SEC.26)  
Field: WELD COUNTY Well: STATE NORTH PLATTE 11-14-26HC  
Facility: SEC.26-T5N-R63W Wellbore: STATE NORTH PLATTE 11-14-26HC PWB

Plot reference wellpath is STATE NORTH PLATTE 11-14-26HC (REV-B.0) PWP

True vertical depths are referenced to CADE 22 (RKB)	Grid System: NAD83 / Lambert Colorado SP, Northern Zone (501), US feet
Measured depths are referenced to CADE 22 (RKB)	North Reference: True north
CADE 22 (RKB) to Mean Sea Level: 4563 feet	Scale: True distance
Mean Sea Level to Mud line (At Slot: SLOTHS STATE NORTH PLATTE 11-14-26HC (377FNL & 956FWL,SEC.26)): 0 feet	Depths are in feet
Coordinates are in feet referenced to Slot	Created by: gualtiero on 8/8/2013

## Location Information

Facility Name		Grid East (US ft)	Grid North (US ft)	Latitude	Longitude	
SEC.26-T5N-R63W		330390.838	1381774.536	40°22'34.464"N	104°24'32.438"W	
Slot	Local N (ft)	Local E (ft)	Grid East (US ft)	Grid North (US ft)	Latitude	Longitude
SLOTHS STATE NORTH PLATTE 11-14-26HC (377FNL & 956FWL,SEC.26)	80.15	0.00	330390.852	1381854.675	40°22'35.258"N	104°24'32.438"W
CADE 22 (RKB) to Mud line (At Slot: SLOTHS STATE NORTH PLATTE 11-14-26HC (377FNL & 956FWL,SEC.26))					4563ft	
Mean Sea Level to Mud line (At Slot: SLOTHS STATE NORTH PLATTE 11-14-26HC (377FNL & 956FWL,SEC.26))					0ft	
CADE 22 (RKB) to Mean Sea Level					4563ft	

## Well Profile Data

Design Comment	MD (ft)	Inc. (")	Az. (")	TVD (ft)	Local N (ft)	Local E (ft)	DLS (°/100ft)	VS (ft)
Tie On	17.00	0.000	317.890	17.00	0.00	0.00	0.00	0.00
End of Tangent	450.00	0.000	317.890	450.00	0.00	0.00	0.00	0.00
End of Build	1050.00	12.000	317.890	1045.62	46.44	-41.98	2.00	-42.53
End of Tangent	2781.81	12.000	317.890	2739.58	313.56	-283.42	0.00	-287.17
End of Drop	3381.81	0.000	180.779	3335.21	360.00	-325.40	2.00	-329.71
End of Tangent	6029.80	0.000	180.779	5983.20	360.00	-325.40	0.00	-329.71
End of Build	6666.16	70.000	180.779	6472.66	17.31	-330.06	11.00	12.05
End of Tangent	6736.16	70.000	180.779	6496.60	-48.46	-330.95	0.00	77.64
End of 3D Arc	6917.98	90.000	180.779	6528.01	-226.60	-333.37	11.00	255.28
End of Tangent	11067.13	90.000	180.779	6528.00	-4375.36	-389.78	0.00	4392.69

## Targets

Name	MD (ft)	TVD (ft)	Local N (ft)	Local E (ft)	Grid East (US ft)	Grid North (US ft)	Latitude	Longitude
STATE NORTH PLATTE 11-14-26HC SECTION 26		1.00	-48.10	0.00	330390.84	1381774.54	40°22'34.464"N	104°24'32.438"W
STATE NORTH PLATTE 11-14-26HC HARDLINE (460' SETBACKS)		6528.01	-48.10	0.00	330390.84	1381774.54	40°22'34.464"N	104°24'32.438"W
STATE NORTH PLATTE 11-14-26HC BHL Prod Pw (470FNL & 625FWL,SEC.26)		6528.01	-48.10	-389.78	330390.84	1381774.54	40°22'34.464"N	104°24'32.438"W
STATE NORTH PLATTE 11-14-26HC BHL REV-2 (470FNL & 625FWL,SEC.26)	11067.13	6528.00	-4375.36	-389.78	330390.84	1381774.54	40°22'34.464"N	104°24'32.438"W
STATE NORTH PLATTE 11-14-26HC Target 1		6528.01	-153.01	-389.20	330390.48	1381880.40	40°22'33.714"N	104°24'36.500"W
STATE NORTH PLATTE 11-14-26HC Target 2		6528.01	-153.01	-333.37	330390.47	1381887.58	40°22'33.714"N	104°24'36.714"W
SLOT#01 Ex.STATE #1-26 (1980FSL & 660FWL,SEC.5)		7075.00	-389.00	0.00	330754.81	1381780.00	40°22'37.282"N	104°24'46.470"W

## Survey Program

Start MD (ft)	End MD (ft)	Tool	Model	Log Name/Comment	Wellbore
17.00	11067.13	NavTrak	NavTrak (Standard)		STATE NORTH PLATTE 11-14-26HC PWB

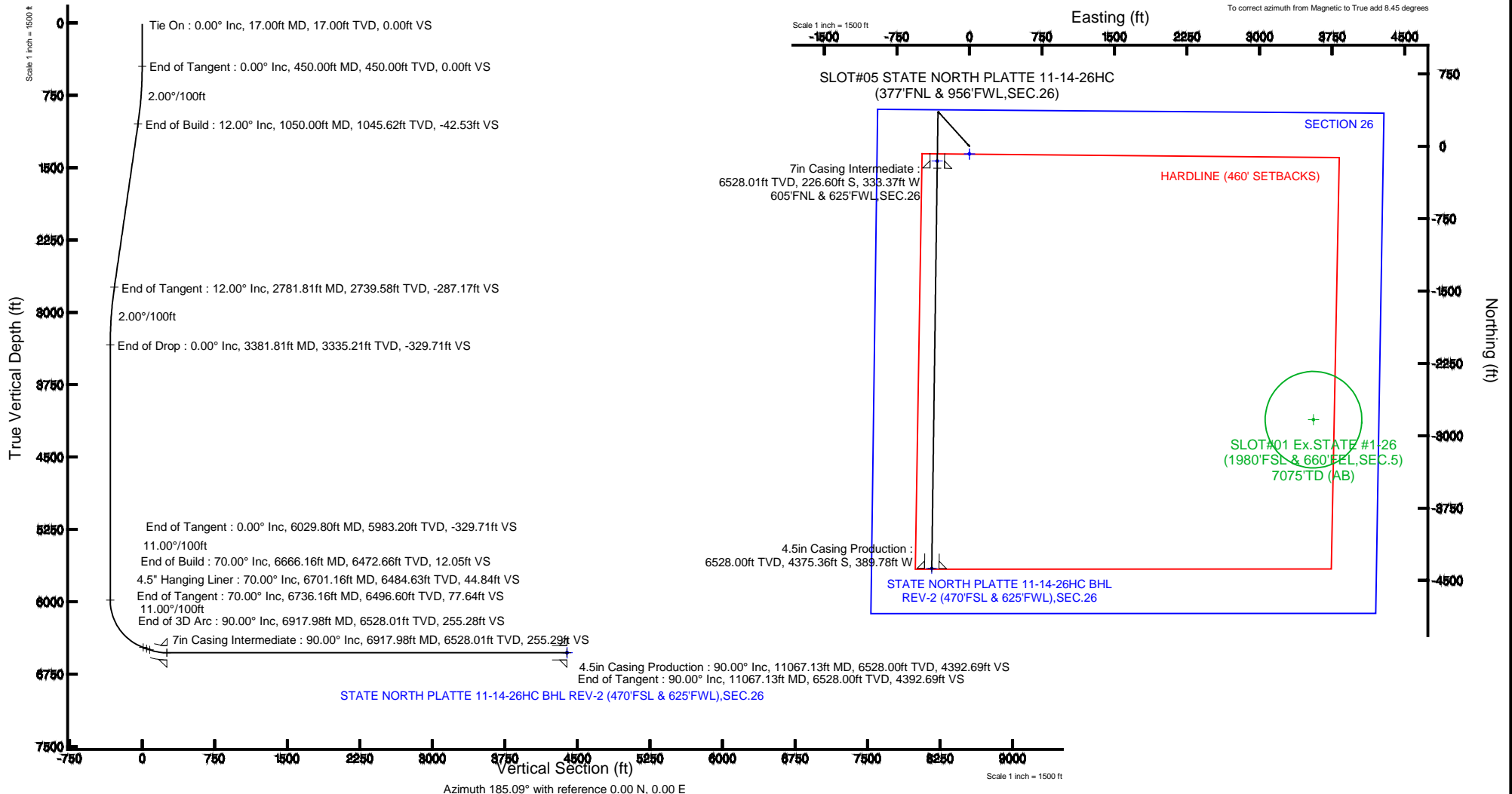


**BAKER HUGHES**



BGGM (1945.0 to 2014.0) Dip: 66.99° Field: 52832.8 nT  
Magnetic North is 8.45 degrees East of True North (at 7/16/2013)

To correct azimuth from Magnetic to True add 8.45 degrees





# Planned Wellpath Report

STATE NORTH PLATTE 11-14-26HC (REV-B.0) PWP  
Page 1 of 8



## REFERENCE WELLPATH IDENTIFICATION

Operator	BONANZA CREEK OIL COMPANY	Slot	SLOT#05 STATE NORTH PLATTE 11-14-26HC (377'FNL & 956'FWL,SEC.26)
Area	COLORADO	Well	STATE NORTH PLATTE 11-14-26HC
Field	WELD COUNTY	Wellbore	STATE NORTH PLATTE 11-14-26HC PWB
Facility	SEC.26-T5N-R63W		

## REPORT SETUP INFORMATION

Projection System	NAD83 / Lambert Colorado SP, Northern Zone (501), US feet	Software System	WellArchitect® 4.0.0
North Reference	True	User	Guenaler
Scale	0.999959	Report Generated	8/8/2013 at 9:49:11 AM
Convergence at slot	n/a	Database/Source file	WA_Denver/STATE_NORTH_PLATTE_11-14-26HC_PWB.xml

## WELLPATH LOCATION

	Local coordinates		Grid coordinates		Geographic coordinates	
	North[ft]	East[ft]	Easting[US ft]	Northing[US ft]	Latitude	Longitude
Slot Location	80.15	0.00	3303949.85	1381854.68	40°22'35.256"N	104°24'32.436"W
Facility Reference Pt			3303950.84	1381774.54	40°22'34.464"N	104°24'32.436"W
Field Reference Pt			3327718.19	1377782.99	40°21'52.020"N	104°19'26.040"W

## WELLPATH DATUM

Calculation method	Minimum curvature	CADE 22 (RKB) to Facility Vertical Datum	4583.00ft
Horizontal Reference Pt	Slot	CADE 22 (RKB) to Mean Sea Level	4583.00ft
Vertical Reference Pt	CADE 22 (RKB)	CADE 22 (RKB) to Mud Line at Slot (SLOT#05 STATE NORTH PLATTE 11-14-26HC (377'FNL & 956'FWL,SEC.26))	4583.00ft
MD Reference Pt	CADE 22 (RKB)	Section Origin	N 0.00, E 0.00 ft
Field Vertical Reference	Mean Sea Level	Section Azimuth	185.09°



# Planned Wellpath Report

STATE NORTH PLATTE 11-14-26HC (REV-B.0) PWP  
Page 2 of 8



## REFERENCE WELLPATH IDENTIFICATION

Operator	BONANZA CREEK OIL COMPANY	Slot	SLOT#05 STATE NORTH PLATTE 11-14-26HC (377'FNL & 956'FWL,SEC.26)
Area	COLORADO	Well	STATE NORTH PLATTE 11-14-26HC
Field	WELD COUNTY	Wellbore	STATE NORTH PLATTE 11-14-26HC PWB
Facility	SEC.26-T5N-R63W		

## WELLPATH DATA (122 stations) † = interpolated/extrapolated station

MD [ft]	Inclination [°]	Azimuth [°]	TVD [ft]	Vert Sect [ft]	North [ft]	East [ft]	Latitude	Longitude	DLS [°/100ft]	Comments
0.00†	0.000	317.890	0.00	0.00	0.00	0.00	40°22'35.256"N	104°24'32.436"W	0.00	
17.00	0.000	317.890	17.00	0.00	0.00	0.00	40°22'35.256"N	104°24'32.436"W	0.00	Tie On
117.00†	0.000	317.890	117.00	0.00	0.00	0.00	40°22'35.256"N	104°24'32.436"W	0.00	
217.00†	0.000	317.890	217.00	0.00	0.00	0.00	40°22'35.256"N	104°24'32.436"W	0.00	
317.00†	0.000	317.890	317.00	0.00	0.00	0.00	40°22'35.256"N	104°24'32.436"W	0.00	
417.00†	0.000	317.890	417.00	0.00	0.00	0.00	40°22'35.256"N	104°24'32.436"W	0.00	
450.00	0.000	317.890	450.00	0.00	0.00	0.00	40°22'35.256"N	104°24'32.436"W	0.00	End of Tangent
517.00†	1.340	317.890	516.99	-0.53	0.58	-0.53	40°22'35.262"N	104°24'32.443"W	2.00	
617.00†	3.340	317.890	616.91	-3.31	3.61	-3.26	40°22'35.292"N	104°24'32.478"W	2.00	
717.00†	5.340	317.890	716.61	-8.45	9.22	-8.34	40°22'35.347"N	104°24'32.544"W	2.00	
817.00†	7.340	317.890	816.00	-15.95	17.42	-15.74	40°22'35.428"N	104°24'32.639"W	2.00	
917.00†	9.340	317.890	914.93	-25.80	28.18	-25.47	40°22'35.534"N	104°24'32.765"W	2.00	
1017.00†	11.340	317.890	1013.31	-38.00	41.49	-37.50	40°22'35.666"N	104°24'32.921"W	2.00	
1050.00	12.000	317.890	1045.62	-42.53	46.44	-41.98	40°22'35.715"N	104°24'32.978"W	2.00	End of Build
1117.00†	12.000	317.890	1111.16	-52.00	56.78	-51.32	40°22'35.817"N	104°24'33.099"W	0.00	
1217.00†	12.000	317.890	1208.97	-66.12	72.20	-65.26	40°22'35.969"N	104°24'33.279"W	0.00	
1317.00†	12.000	317.890	1306.79	-80.25	87.62	-79.20	40°22'36.122"N	104°24'33.459"W	0.00	
1417.00†	12.000	317.890	1404.60	-94.38	103.05	-93.14	40°22'36.274"N	104°24'33.640"W	0.00	
1517.00†	12.000	317.890	1502.42	-108.50	118.47	-107.09	40°22'36.427"N	104°24'33.820"W	0.00	
1617.00†	12.000	317.890	1600.23	-122.63	133.90	-121.03	40°22'36.579"N	104°24'34.000"W	0.00	
1717.00†	12.000	317.890	1698.05	-136.76	149.32	-134.97	40°22'36.732"N	104°24'34.180"W	0.00	
1817.00†	12.000	317.890	1795.86	-150.88	164.75	-148.91	40°22'36.884"N	104°24'34.360"W	0.00	
1917.00†	12.000	317.890	1893.68	-165.01	180.17	-162.85	40°22'37.036"N	104°24'34.540"W	0.00	
2017.00†	12.000	317.890	1991.49	-179.13	195.59	-176.79	40°22'37.189"N	104°24'34.720"W	0.00	
2117.00†	12.000	317.890	2089.31	-193.26	211.02	-190.74	40°22'37.341"N	104°24'34.900"W	0.00	
2217.00†	12.000	317.890	2187.12	-207.39	226.44	-204.68	40°22'37.494"N	104°24'35.081"W	0.00	
2317.00†	12.000	317.890	2284.94	-221.51	241.87	-218.62	40°22'37.646"N	104°24'35.261"W	0.00	
2417.00†	12.000	317.890	2382.75	-235.64	257.29	-232.56	40°22'37.798"N	104°24'35.441"W	0.00	
2517.00†	12.000	317.890	2480.57	-249.77	272.71	-246.50	40°22'37.951"N	104°24'35.621"W	0.00	
2617.00†	12.000	317.890	2578.38	-263.89	288.14	-260.44	40°22'38.103"N	104°24'35.801"W	0.00	



# Planned Wellpath Report

STATE NORTH PLATTE 11-14-26HC (REV-B.0) PWP  
Page 3 of 8



## REFERENCE WELLPATH IDENTIFICATION

Operator	BONANZA CREEK OIL COMPANY	Slot	SLOT#05 STATE NORTH PLATTE 11-14-26HC (377'FNL & 956'FWL,SEC.26)
Area	COLORADO	Well	STATE NORTH PLATTE 11-14-26HC
Field	WELD COUNTY	Wellbore	STATE NORTH PLATTE 11-14-26HC PWB
Facility	SEC.26-T5N-R63W		

## WELLPATH DATA (122 stations) † = interpolated/extrapolated station

MD [ft]	Inclination [°]	Azimuth [°]	TVD [ft]	Vert Sect [ft]	North [ft]	East [ft]	Latitude	Longitude	DLS [°/100ft]	Comments
2717.00†	12.000	317.890	2676.20	-278.02	303.56	-274.39	40°22'38.256"N	104°24'35.981"W	0.00	
2781.81	12.000	317.890	2739.58	-287.17	313.56	-283.42	40°22'38.354"N	104°24'36.098"W	0.00	End of Tangent
2817.00†	11.296	317.890	2774.05	-292.00	318.83	-288.19	40°22'38.407"N	104°24'36.160"W	2.00	
2917.00†	9.296	317.890	2872.44	-304.14	332.09	-300.17	40°22'38.538"N	104°24'36.315"W	2.00	
3017.00†	7.296	317.890	2971.39	-313.95	342.79	-309.84	40°22'38.643"N	104°24'36.440"W	2.00	
3117.00†	5.296	317.890	3070.78	-321.40	350.93	-317.20	40°22'38.724"N	104°24'36.535"W	2.00	
3217.00†	3.296	317.890	3170.49	-326.49	356.48	-322.22	40°22'38.779"N	104°24'36.599"W	2.00	
3317.00†	1.296	317.890	3270.41	-329.21	359.46	-324.91	40°22'38.808"N	104°24'36.634"W	2.00	
3381.81	0.000	180.779	3335.21	-329.71	360.00	-325.40	40°22'38.813"N	104°24'36.641"W	2.00	End of Drop
3417.00†	0.000	180.779	3370.40	-329.71	360.00	-325.40	40°22'38.813"N	104°24'36.641"W	0.00	
3517.00†	0.000	180.779	3470.40	-329.71	360.00	-325.40	40°22'38.813"N	104°24'36.641"W	0.00	
3617.00†	0.000	180.779	3570.40	-329.71	360.00	-325.40	40°22'38.813"N	104°24'36.641"W	0.00	
3717.00†	0.000	180.779	3670.40	-329.71	360.00	-325.40	40°22'38.813"N	104°24'36.641"W	0.00	
3817.00†	0.000	180.779	3770.40	-329.71	360.00	-325.40	40°22'38.813"N	104°24'36.641"W	0.00	
3917.00†	0.000	180.779	3870.40	-329.71	360.00	-325.40	40°22'38.813"N	104°24'36.641"W	0.00	
4017.00†	0.000	180.779	3970.40	-329.71	360.00	-325.40	40°22'38.813"N	104°24'36.641"W	0.00	
4117.00†	0.000	180.779	4070.40	-329.71	360.00	-325.40	40°22'38.813"N	104°24'36.641"W	0.00	
4217.00†	0.000	180.779	4170.40	-329.71	360.00	-325.40	40°22'38.813"N	104°24'36.641"W	0.00	
4317.00†	0.000	180.779	4270.40	-329.71	360.00	-325.40	40°22'38.813"N	104°24'36.641"W	0.00	
4417.00†	0.000	180.779	4370.40	-329.71	360.00	-325.40	40°22'38.813"N	104°24'36.641"W	0.00	
4517.00†	0.000	180.779	4470.40	-329.71	360.00	-325.40	40°22'38.813"N	104°24'36.641"W	0.00	
4617.00†	0.000	180.779	4570.40	-329.71	360.00	-325.40	40°22'38.813"N	104°24'36.641"W	0.00	
4717.00†	0.000	180.779	4670.40	-329.71	360.00	-325.40	40°22'38.813"N	104°24'36.641"W	0.00	
4817.00†	0.000	180.779	4770.40	-329.71	360.00	-325.40	40°22'38.813"N	104°24'36.641"W	0.00	
4917.00†	0.000	180.779	4870.40	-329.71	360.00	-325.40	40°22'38.813"N	104°24'36.641"W	0.00	
5017.00†	0.000	180.779	4970.40	-329.71	360.00	-325.40	40°22'38.813"N	104°24'36.641"W	0.00	
5117.00†	0.000	180.779	5070.40	-329.71	360.00	-325.40	40°22'38.813"N	104°24'36.641"W	0.00	
5217.00†	0.000	180.779	5170.40	-329.71	360.00	-325.40	40°22'38.813"N	104°24'36.641"W	0.00	
5317.00†	0.000	180.779	5270.40	-329.71	360.00	-325.40	40°22'38.813"N	104°24'36.641"W	0.00	
5417.00†	0.000	180.779	5370.40	-329.71	360.00	-325.40	40°22'38.813"N	104°24'36.641"W	0.00	



# Planned Wellpath Report

STATE NORTH PLATTE 11-14-26HC (REV-B.0) PWP  
Page 4 of 8



## REFERENCE WELLPATH IDENTIFICATION

Operator	BONANZA CREEK OIL COMPANY	Slot	SLOT#05 STATE NORTH PLATTE 11-14-26HC (377'FNL & 956'FWL,SEC.26)
Area	COLORADO	Well	STATE NORTH PLATTE 11-14-26HC
Field	WELD COUNTY	Wellbore	STATE NORTH PLATTE 11-14-26HC PWB
Facility	SEC.26-T5N-R63W		

## WELLPATH DATA (122 stations) † = interpolated/extrapolated station

MD [ft]	Inclination [°]	Azimuth [°]	TVD [ft]	Vert Sect [ft]	North [ft]	East [ft]	Latitude	Longitude	DLS [°/100ft]	Comments
5517.00†	0.000	180.779	5470.40	-329.71	360.00	-325.40	40°22'38.813"N	104°24'36.641"W	0.00	
5617.00†	0.000	180.779	5570.40	-329.71	360.00	-325.40	40°22'38.813"N	104°24'36.641"W	0.00	
5717.00†	0.000	180.779	5670.40	-329.71	360.00	-325.40	40°22'38.813"N	104°24'36.641"W	0.00	
5817.00†	0.000	180.779	5770.40	-329.71	360.00	-325.40	40°22'38.813"N	104°24'36.641"W	0.00	
5917.00†	0.000	180.779	5870.40	-329.71	360.00	-325.40	40°22'38.813"N	104°24'36.641"W	0.00	
6017.00†	0.000	180.779	5970.40	-329.71	360.00	-325.40	40°22'38.813"N	104°24'36.641"W	0.00	
6029.80	0.000	180.779	5983.20	-329.71	360.00	-325.40	40°22'38.813"N	104°24'36.641"W	0.00	End of Tangent
6117.00†	9.593	180.779	6070.00	-322.44	352.72	-325.50	40°22'38.741"N	104°24'36.642"W	11.00	
6217.00†	20.593	180.779	6166.40	-296.52	326.72	-325.85	40°22'38.485"N	104°24'36.646"W	11.00	
6317.00†	31.593	180.779	6256.07	-252.73	282.81	-326.45	40°22'38.051"N	104°24'36.654"W	11.00	
6417.00†	42.593	180.779	6335.71	-192.68	222.60	-327.27	40°22'37.456"N	104°24'36.665"W	11.00	
6517.00†	53.593	180.779	6402.40	-118.58	148.30	-328.28	40°22'36.721"N	104°24'36.678"W	11.00	
6617.00†	64.593	180.779	6453.69	-33.16	62.64	-329.44	40°22'35.875"N	104°24'36.693"W	11.00	
6666.16	70.000	180.779	6472.66	12.05	17.31	-330.06	40°22'35.427"N	104°24'36.701"W	11.00	End of Build
6701.16†	70.000	180.779	6484.63	44.84	-15.58	-330.51	40°22'35.102"N	104°24'36.706"W	0.00	4.5" Hanging Liner
6717.00†	70.000	180.779	6490.04	59.69	-30.46	-330.71	40°22'34.955"N	104°24'36.709"W	0.00	
6736.16	70.000	180.779	6496.60	77.64	-48.46	-330.95	40°22'34.777"N	104°24'36.712"W	0.00	End of Tangent
6817.00†	78.893	180.779	6518.25	155.22	-126.26	-332.01	40°22'34.008"N	104°24'36.726"W	11.00	
6917.00†	89.893	180.779	6528.01	254.31	-225.62	-333.36	40°22'33.026"N	104°24'36.743"W	11.00	
6917.98	90.000	180.779	6528.01	255.28	-226.60	-333.37	40°22'33.017"N	104°24'36.743"W	11.00	End of 3D Arc
7017.00†	90.000	180.779	6528.01	354.03	-325.61	-334.72	40°22'32.038"N	104°24'36.761"W	0.00	
7117.00†	90.000	180.779	6528.01	453.74	-425.60	-336.08	40°22'31.050"N	104°24'36.778"W	0.00	
7217.00†	90.000	180.779	6528.01	553.46	-525.59	-337.44	40°22'30.062"N	104°24'36.796"W	0.00	
7317.00†	90.000	180.779	6528.01	653.18	-625.58	-338.80	40°22'29.074"N	104°24'36.813"W	0.00	
7417.00†	90.000	180.779	6528.01	752.89	-725.57	-340.16	40°22'28.086"N	104°24'36.831"W	0.00	
7517.00†	90.000	180.779	6528.01	852.61	-825.56	-341.52	40°22'27.098"N	104°24'36.849"W	0.00	
7617.00†	90.000	180.779	6528.01	952.33	-925.55	-342.88	40°22'26.110"N	104°24'36.866"W	0.00	
7717.00†	90.000	180.779	6528.01	1052.04	-1025.54	-344.24	40°22'25.122"N	104°24'36.884"W	0.00	
7817.00†	90.000	180.779	6528.01	1151.76	-1125.54	-345.60	40°22'24.134"N	104°24'36.901"W	0.00	
7917.00†	90.000	180.779	6528.01	1251.48	-1225.53	-346.96	40°22'23.146"N	104°24'36.919"W	0.00	



# Planned Wellpath Report

STATE NORTH PLATTE 11-14-26HC (REV-B.0) PWP  
Page 5 of 8



## REFERENCE WELLPATH IDENTIFICATION

Operator	BONANZA CREEK OIL COMPANY	Slot	SLOT#05 STATE NORTH PLATTE 11-14-26HC (377'FNL & 956'FWL,SEC.26)
Area	COLORADO	Well	STATE NORTH PLATTE 11-14-26HC
Field	WELD COUNTY	Wellbore	STATE NORTH PLATTE 11-14-26HC PWB
Facility	SEC.26-T5N-R63W		

## WELLPATH DATA (122 stations) † = interpolated/extrapolated station

MD [ft]	Inclination [°]	Azimuth [°]	TVD [ft]	Vert Sect [ft]	North [ft]	East [ft]	Latitude	Longitude	DLS [°/100ft]	Comments
8017.00†	90.000	180.779	6528.01	1351.20	-1325.52	-348.32	40°22'22.158"N	104°24'36.936"W	0.00	
8117.00†	90.000	180.779	6528.01	1450.91	-1425.51	-349.67	40°22'21.170"N	104°24'36.954"W	0.00	
8217.00†	90.000	180.779	6528.01	1550.63	-1525.50	-351.03	40°22'20.181"N	104°24'36.971"W	0.00	
8317.00†	90.000	180.779	6528.01	1650.35	-1625.49	-352.39	40°22'19.193"N	104°24'36.989"W	0.00	
8417.00†	90.000	180.779	6528.01	1750.06	-1725.48	-353.75	40°22'18.205"N	104°24'37.006"W	0.00	
8517.00†	90.000	180.779	6528.01	1849.78	-1825.47	-355.11	40°22'17.217"N	104°24'37.024"W	0.00	
8617.00†	90.000	180.779	6528.01	1949.50	-1925.46	-356.47	40°22'16.229"N	104°24'37.042"W	0.00	
8717.00†	90.000	180.779	6528.01	2049.21	-2025.45	-357.83	40°22'15.241"N	104°24'37.059"W	0.00	
8817.00†	90.000	180.779	6528.01	2148.93	-2125.44	-359.19	40°22'14.253"N	104°24'37.077"W	0.00	
8917.00†	90.000	180.779	6528.00	2248.65	-2225.43	-360.55	40°22'13.265"N	104°24'37.094"W	0.00	
9017.00†	90.000	180.779	6528.00	2348.36	-2325.42	-361.91	40°22'12.277"N	104°24'37.112"W	0.00	
9117.00†	90.000	180.779	6528.00	2448.08	-2425.41	-363.27	40°22'11.289"N	104°24'37.129"W	0.00	
9217.00†	90.000	180.779	6528.00	2547.80	-2525.41	-364.63	40°22'10.301"N	104°24'37.147"W	0.00	
9317.00†	90.000	180.779	6528.00	2647.52	-2625.40	-365.99	40°22'09.313"N	104°24'37.164"W	0.00	
9417.00†	90.000	180.779	6528.00	2747.23	-2725.39	-367.35	40°22'08.325"N	104°24'37.182"W	0.00	
9517.00†	90.000	180.779	6528.00	2846.95	-2825.38	-368.71	40°22'07.336"N	104°24'37.199"W	0.00	
9617.00†	90.000	180.779	6528.00	2946.67	-2925.37	-370.07	40°22'06.348"N	104°24'37.217"W	0.00	
9717.00†	90.000	180.779	6528.00	3046.38	-3025.36	-371.43	40°22'05.360"N	104°24'37.235"W	0.00	
9817.00†	90.000	180.779	6528.00	3146.10	-3125.35	-372.79	40°22'04.372"N	104°24'37.252"W	0.00	
9917.00†	90.000	180.779	6528.00	3245.82	-3225.34	-374.14	40°22'03.384"N	104°24'37.270"W	0.00	
10017.00†	90.000	180.779	6528.00	3345.53	-3325.33	-375.50	40°22'02.396"N	104°24'37.287"W	0.00	
10117.00†	90.000	180.779	6528.00	3445.25	-3425.32	-376.86	40°22'01.408"N	104°24'37.305"W	0.00	
10217.00†	90.000	180.779	6528.00	3544.97	-3525.31	-378.22	40°22'00.420"N	104°24'37.322"W	0.00	
10317.00†	90.000	180.779	6528.00	3644.69	-3625.30	-379.58	40°21'59.432"N	104°24'37.340"W	0.00	
10417.00†	90.000	180.779	6528.00	3744.40	-3725.29	-380.94	40°21'58.444"N	104°24'37.357"W	0.00	
10517.00†	90.000	180.779	6528.00	3844.12	-3825.29	-382.30	40°21'57.456"N	104°24'37.375"W	0.00	
10617.00†	90.000	180.779	6528.00	3943.84	-3925.28	-383.66	40°21'56.468"N	104°24'37.392"W	0.00	
10717.00†	90.000	180.779	6528.00	4043.55	-4025.27	-385.02	40°21'55.480"N	104°24'37.410"W	0.00	
10817.00†	90.000	180.779	6528.00	4143.27	-4125.26	-386.38	40°21'54.491"N	104°24'37.428"W	0.00	
10917.00†	90.000	180.779	6528.00	4242.99	-4225.25	-387.74	40°21'53.503"N	104°24'37.445"W	0.00	



# Planned Wellpath Report

STATE NORTH PLATTE 11-14-26HC (REV-B.0) PWP  
Page 6 of 8



## REFERENCE WELLPATH IDENTIFICATION

Operator	BONANZA CREEK OIL COMPANY	Slot	SLOT#05 STATE NORTH PLATTE 11-14-26HC (377'FNL & 956'FWL,SEC.26)
Area	COLORADO	Well	STATE NORTH PLATTE 11-14-26HC
Field	WELD COUNTY	Wellbore	STATE NORTH PLATTE 11-14-26HC PWB
Facility	SEC.26-T5N-R63W		

## WELLPATH DATA (122 stations) † = interpolated/extrapolated station

MD [ft]	Inclination [°]	Azimuth [°]	TVD [ft]	Vert Sect [ft]	North [ft]	East [ft]	Latitude	Longitude	DLS [°/100ft]	Comments
11017.00†	90.000	180.779	6528.00	4342.70	-4325.24	-389.10	40°21'52.515"N	104°24'37.463"W	0.00	
11067.13	90.000	180.779	6528.00 <sup>1</sup>	4392.69	-4375.36	-389.78	40°21'52.020"N	104°24'37.471"W	0.00	End of Tangent

## HOLE & CASING SECTIONS -

Ref Wellbore: STATE NORTH PLATTE 11-14-26HC PWB      Ref Wellpath: STATE NORTH PLATTE 11-14-26HC (REV-B.0) PWP

String/Diameter	Start MD [ft]	End MD [ft]	Interval [ft]	Start TVD [ft]	End TVD [ft]	Start N/S [ft]	Start E/W [ft]	End N/S [ft]	End E/W [ft]
7in Casing Intermediate	17.00	6917.98	6900.98	17.00	6528.01	0.00	0.00	-226.60	-333.37
4.5in Casing Production	17.00	11067.13	11050.13	17.00	6528.00	0.00	0.00	-4375.36	-389.78
6.125in Open Hole	6917.98	11067.13	4149.15	6528.01	NA	-226.60	-333.37	NA	NA





# Planned Wellpath Report

STATE NORTH PLATTE 11-14-26HC (REV-B.0) PWP  
Page 7 of 8



## REFERENCE WELLPATH IDENTIFICATION

Operator	BONANZA CREEK OIL COMPANY	Slot	SLOT#05 STATE NORTH PLATTE 11-14-26HC (377'FNL & 956'FWL,SEC.26)
Area	COLORADO	Well	STATE NORTH PLATTE 11-14-26HC
Field	WELD COUNTY	Wellbore	STATE NORTH PLATTE 11-14-26HC PWB
Facility	SEC.26-T5N-R63W		

## TARGETS

Name	MD [ft]	TVD [ft]	North [ft]	East [ft]	Grid East [US ft]	Grid North [US ft]	Latitude	Longitude	Shape
STATE NORTH PLATTE F-J-26HNB SECTION 26		1.00	-80.15	0.00	3303950.84	1381774.54	40°22'34.464"N	104°24'32.436"W	polygon
STATE NORTH PLATTE F-J-26HNB HARDLINE (460' SETBACKS)		6353.00	-80.15	0.00	3303950.84	1381774.54	40°22'34.464"N	104°24'32.436"W	polygon
STATE NORTH PLATTE 11-14-26HC BHL From Plat (470'FSL & 633'FWL,SEC.26		6528.00	-4375.36	-406.78	3303596.95	1377474.83	40°21'52.020"N	104°24'37.691"W	point
1) STATE NORTH PLATTE 11-14-26HC BHL REV-2 (470'FSL & 625'FWL),SEC.26	11067.13	6528.00	-4375.36	-389.78	3303613.95	1377475.04	40°21'52.020"N	104°24'37.471"W	point
STATE NORTH PLATTE 11-14-26HC Target 1		6528.00	-153.01	-348.30	3303603.48	1381697.40	40°22'33.744"N	104°24'36.936"W	point
STATE NORTH PLATTE 11-14-26HC Target 2		6528.00	-153.01	-333.30	3303618.47	1381697.58	40°22'33.744"N	104°24'36.742"W	point
Ex.STATE #1-26 (500' Radius)		7076.00	-2833.67	3557.52	3307541.81	1379065.10	40°22'07.252"N	104°23'46.475"W	circle

## SURVEY PROGRAM -

Ref Wellbore: STATE NORTH PLATTE 11-14-26HC PWB      Ref Wellpath: STATE NORTH PLATTE 11-14-26HC (REV-B.0) PWP

Start MD [ft]	End MD [ft]	Positional Uncertainty Model	Log Name/Comment	Wellbore
17.00	11067.13	NaviTrak (Standard)		STATE NORTH PLATTE 11-14-26HC PWB





# Planned Wellpath Report

STATE NORTH PLATTE 11-14-26HC (REV-B.0) PWP  
Page 8 of 8



## REFERENCE WELLPATH IDENTIFICATION

Operator	BONANZA CREEK OIL COMPANY	Slot	SLOT#05 STATE NORTH PLATTE 11-14-26HC (377'FNL & 956'FWL,SEC.26)
Area	COLORADO	Well	STATE NORTH PLATTE 11-14-26HC
Field	WELD COUNTY	Wellbore	STATE NORTH PLATTE 11-14-26HC PWB
Facility	SEC.26-T5N-R63W		

## WELLPATH COMMENTS

MD [ft]	Inclination [°]	Azimuth [°]	TVD [ft]	Comment
6701.16	70.000	180.779	6484.63	4.5" Hanging Liner

## DESIGN COMMENTS

MD [ft]	Inclination [°]	Azimuth [°]	TVD [ft]	Comment
17.00	0.000	317.890	17.00	Tie On
450.00	0.000	317.890	450.00	End of Tangent
1050.00	12.000	317.890	1045.62	End of Build
2781.81	12.000	317.890	2739.58	End of Tangent
3381.81	0.000	180.779	3335.21	End of Drop
6029.80	0.000	180.779	5983.20	End of Tangent
6666.16	70.000	180.779	6472.66	End of Build
6736.16	70.000	180.779	6496.60	End of Tangent
6917.98	90.000	180.779	6528.01	End of 3D Arc
11067.13	90.000	180.779	6528.00	End of Tangent