



NABORS

**COMPLETION
& PRODUCTION
SERVICES CO.**

SONIC LOG

Company		MULL DRILLING COMPANY, INC.	
Well		APC - CAROLE #2-13	
Field		GOLDEN SPIKE	
County		CHEYENNE	
State		COLORADO	
Location:		APC # : 05-017-07749-00	
SEC 13 TWP 16S RGE 45W		CDL/CNL/PE DIL/MEL	
Permanent Datum		GROUND LEVEL	
Log Measured From		KELLY BUSHING 11' A.G.L.	
Drilling Measured From		KELLY BUSHING	
Elevation		4349	
K.B. 4360			
D.F. 4358			
G.L. 4349			
Date	7/15/13		
Run Number	TWO		
Depth Driller	5585		
Depth Logger	5587		
Bottom Logged Interval	5575		
Top Log Interval	600		
Casing Driller	8 5/8"@652'		
Casing Logger	650		
Bit Size	7 7/8"		
Type Fluid in Hole	CHEMICAL MUD	CHLORIDES 5,000 PPM	
Density / Viscosity	9.3/62		
pH / Fluid Loss	10.0/9.0		
Source of Sample	FLOWLINE		
Rim @ Meas. Temp	.650@80F		
Rmf @ Meas. Temp	.488@80F		
Rmc @ Meas. Temp	.780@80F		
Source of Rmf / Rmc	MEASUREMENT		
Rim @ BHT	.400@130F		
Time Circulation Stopped	5.5 HOURS		
Time Logger on Bottom	2:15 A.M.		
Maximum Recorded Temperature	130F		
Equipment Number	4854		
Location	HAYS, KANSAS		
Recorded By	JEFF LUEBBERS		
Witnessed By	PHIL ASKEY		

<<< Fold Here >>>

All interpretations are opinions based on inferences from electrical or other measurements and we cannot and do not guarantee the accuracy or correctness of any interpretation, and we shall not, except in the case of gross or willful negligence on our part, be liable or responsible for any loss, costs, damages, or expenses incurred or sustained by anyone resulting from any interpretation made by any of our officers, agents or employees. These interpretations are also subject to our general terms and conditions set out in our current Price Schedule.

Comments

THANK YOU FOR USING "NABORS" HAYS, KANSAS (785) 628-6395
DIRECTIONS
CHEYENNE WELLS, CO. 10S. ON HWY 385 TO "RD. G", 6 W., 2S., 1E. ON TRAIL, 1/2N.,E. AGAIN

Database File:

011191pe.db

Dataset Pathname:

pass6.5

Presentation Format:

slt

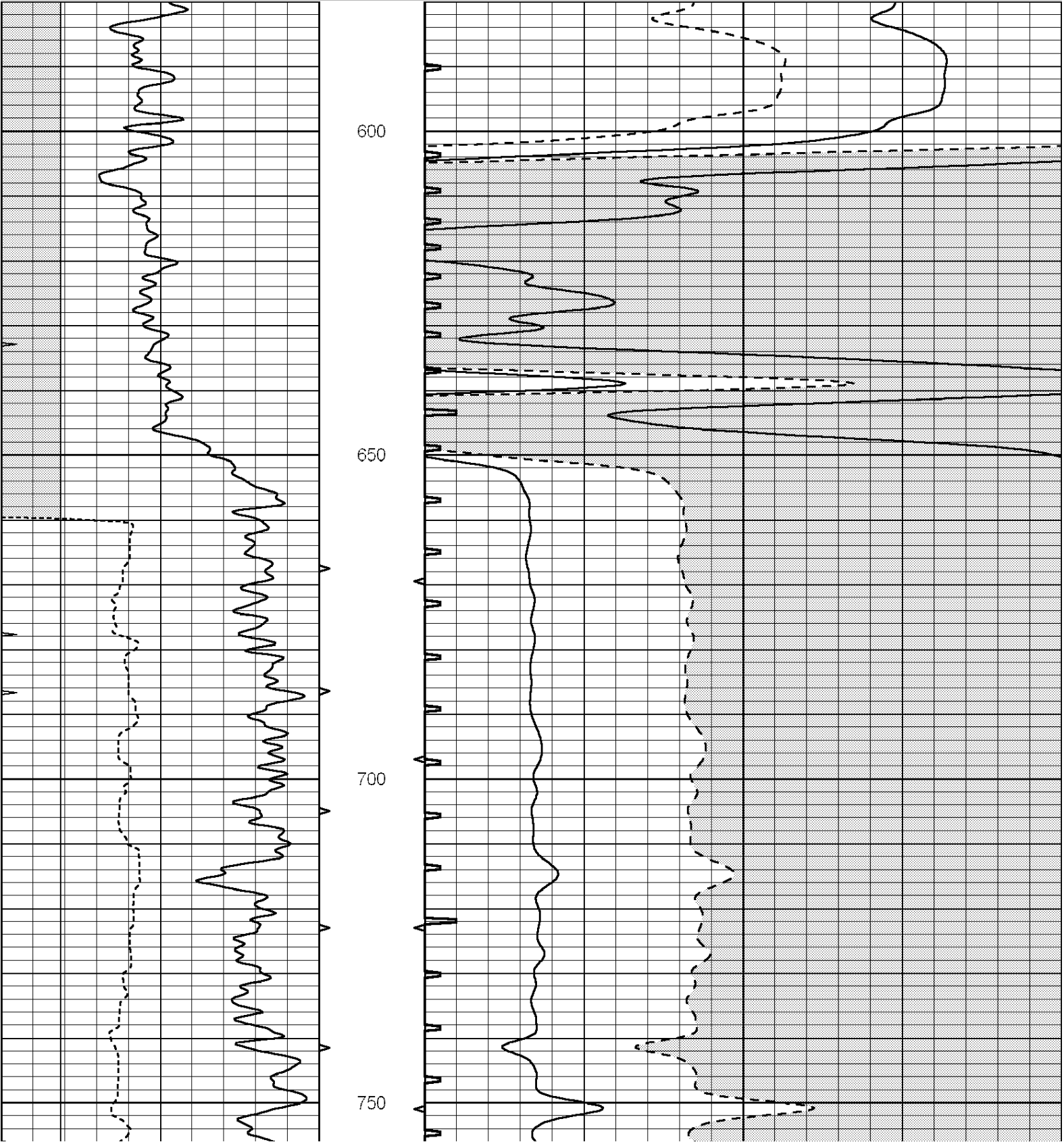
Dataset Creation:

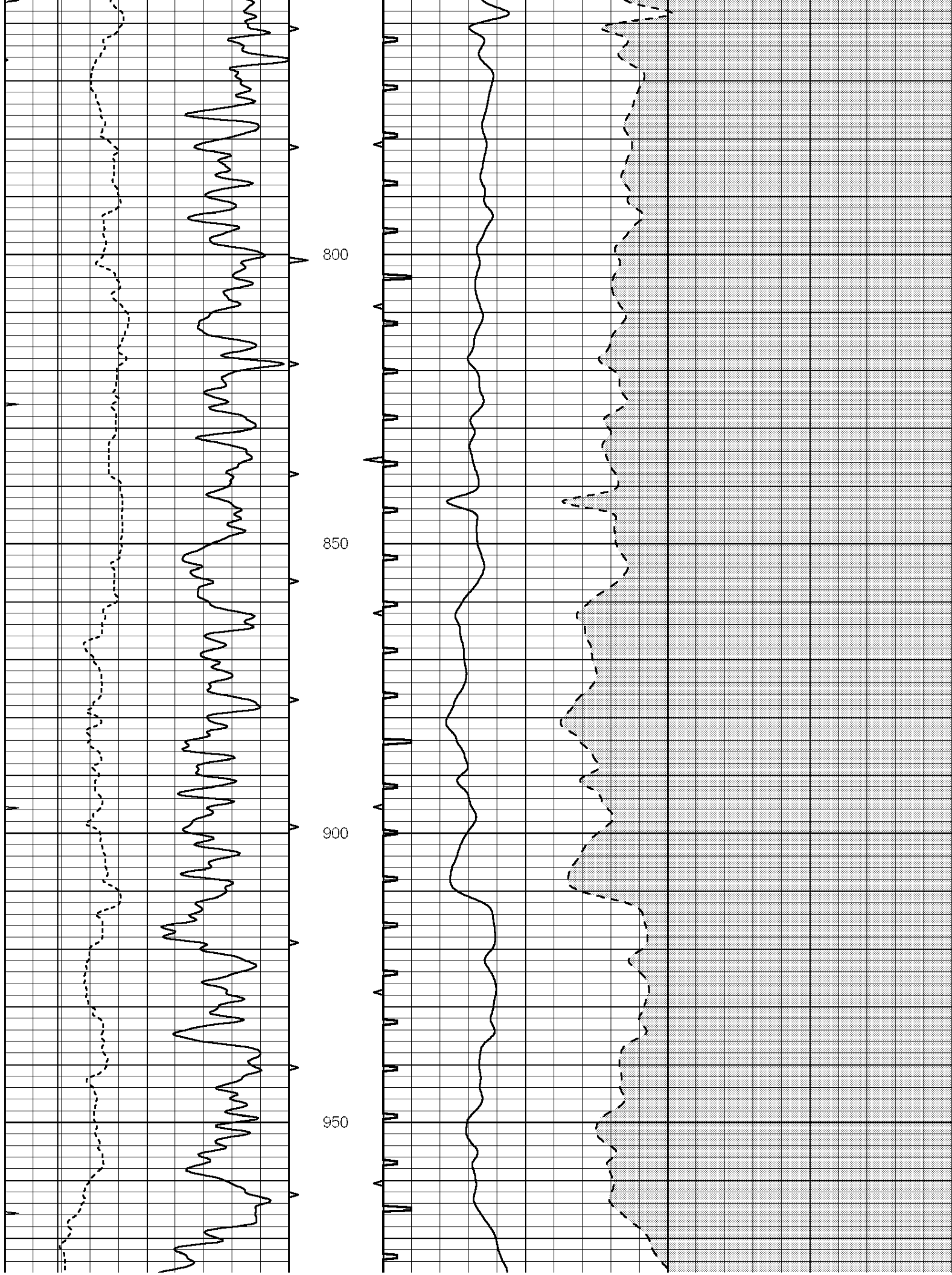
Tue Jul 16 07:04:21 2013

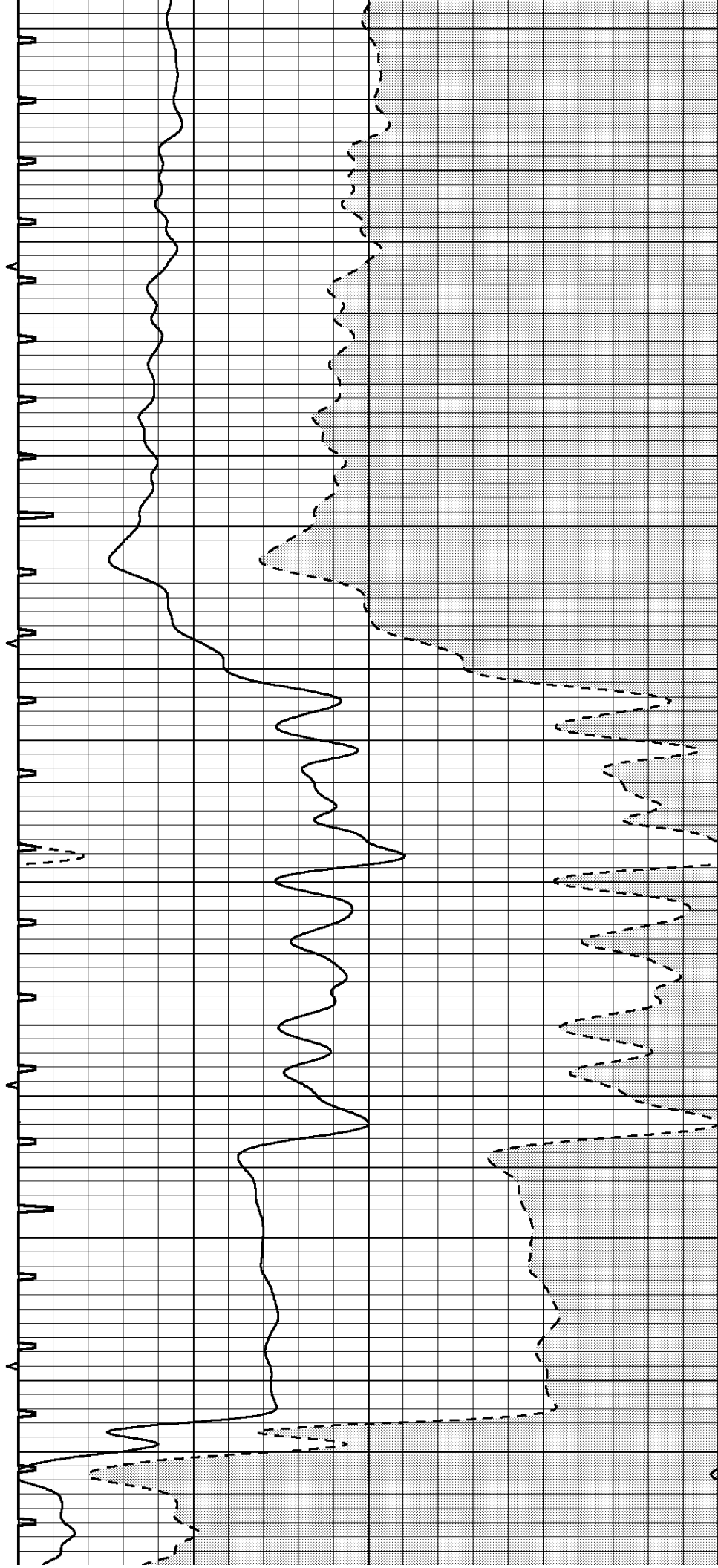
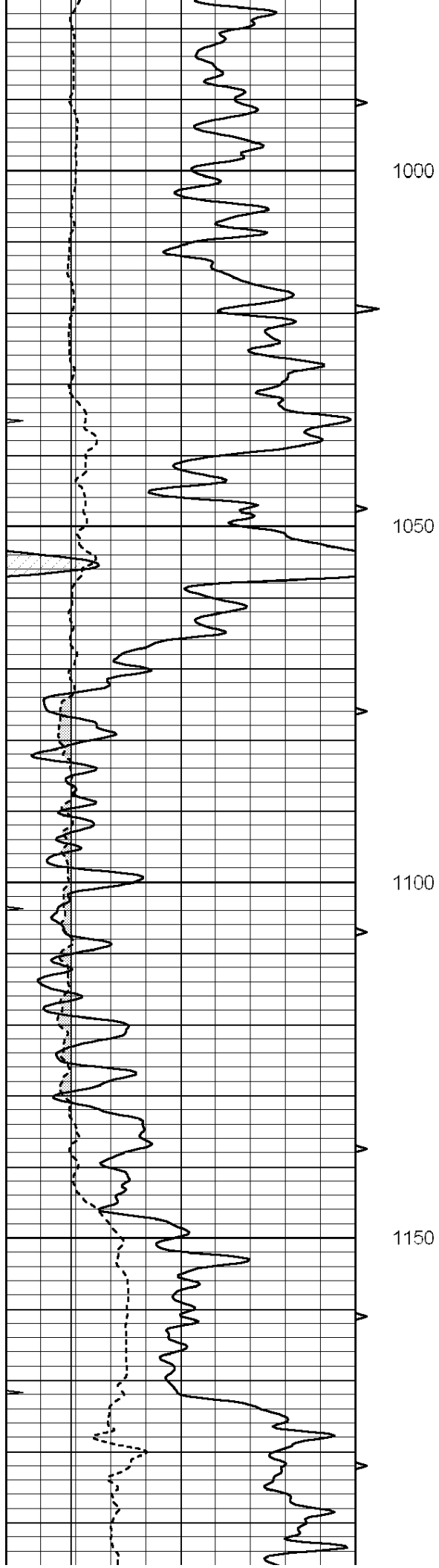
Charted by:

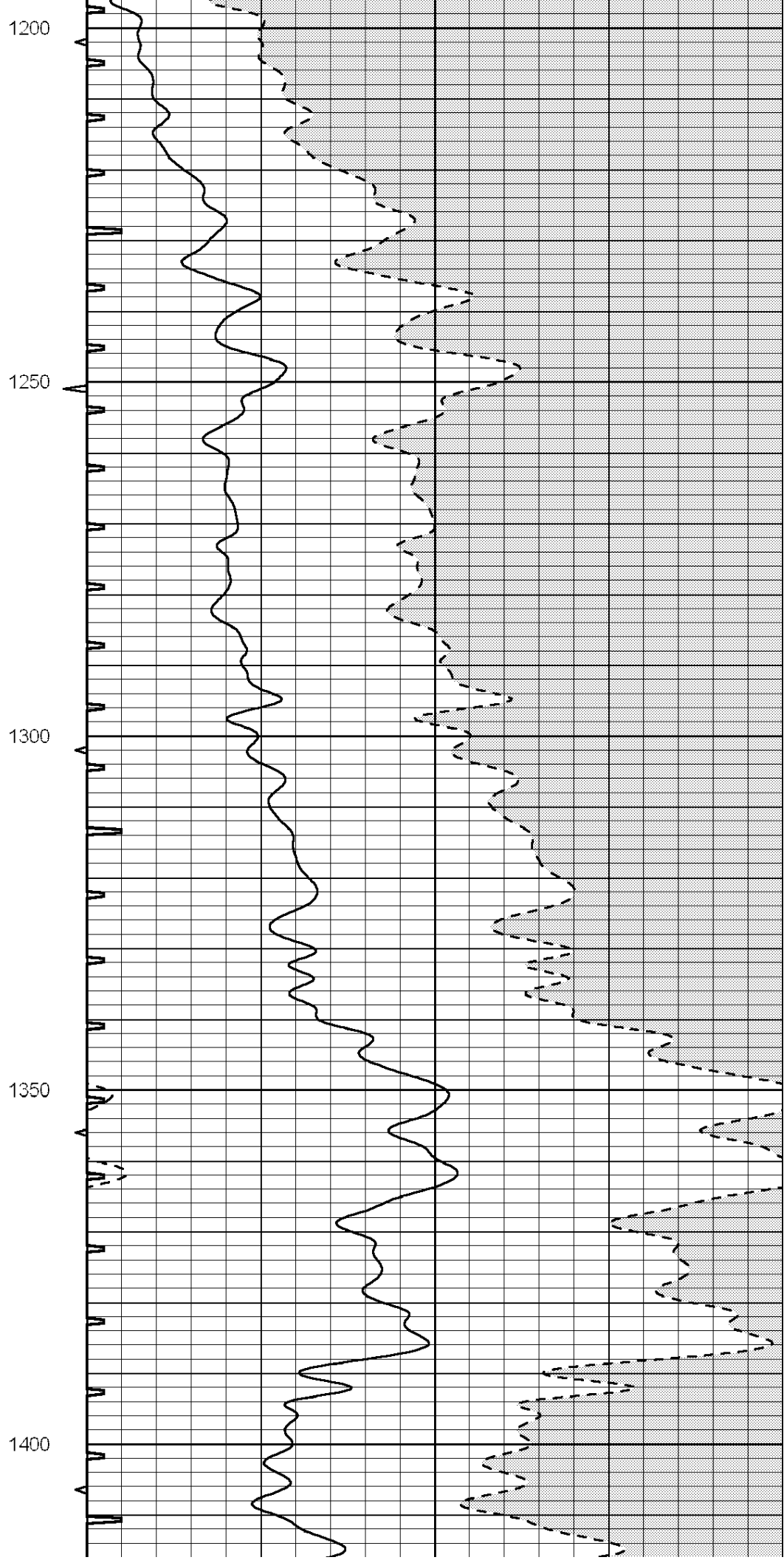
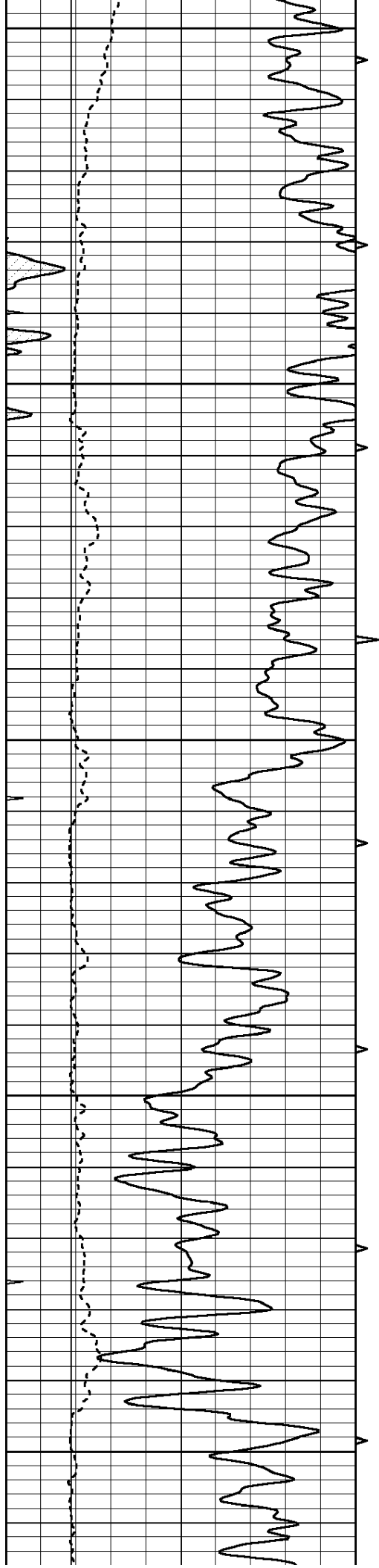
Depth in Feet scaled 1:240

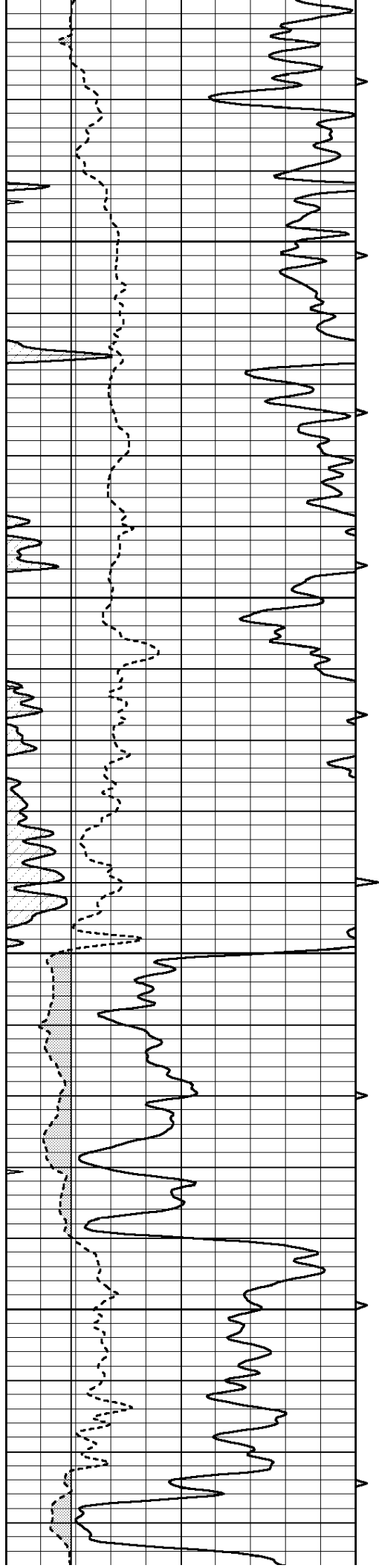
0	GAMMA RAY (GAPI)	150	ABHV	140	DELTA TIME (usec/ft)		40	
6	CALIPER (in)	16	10 (ft3)	0	30	SONIC POROSITY (pu)		-10
-----			-----					
0	MINMK	20	TBHV	0	ITT (msec)		20	
			0 (ft3)	10				









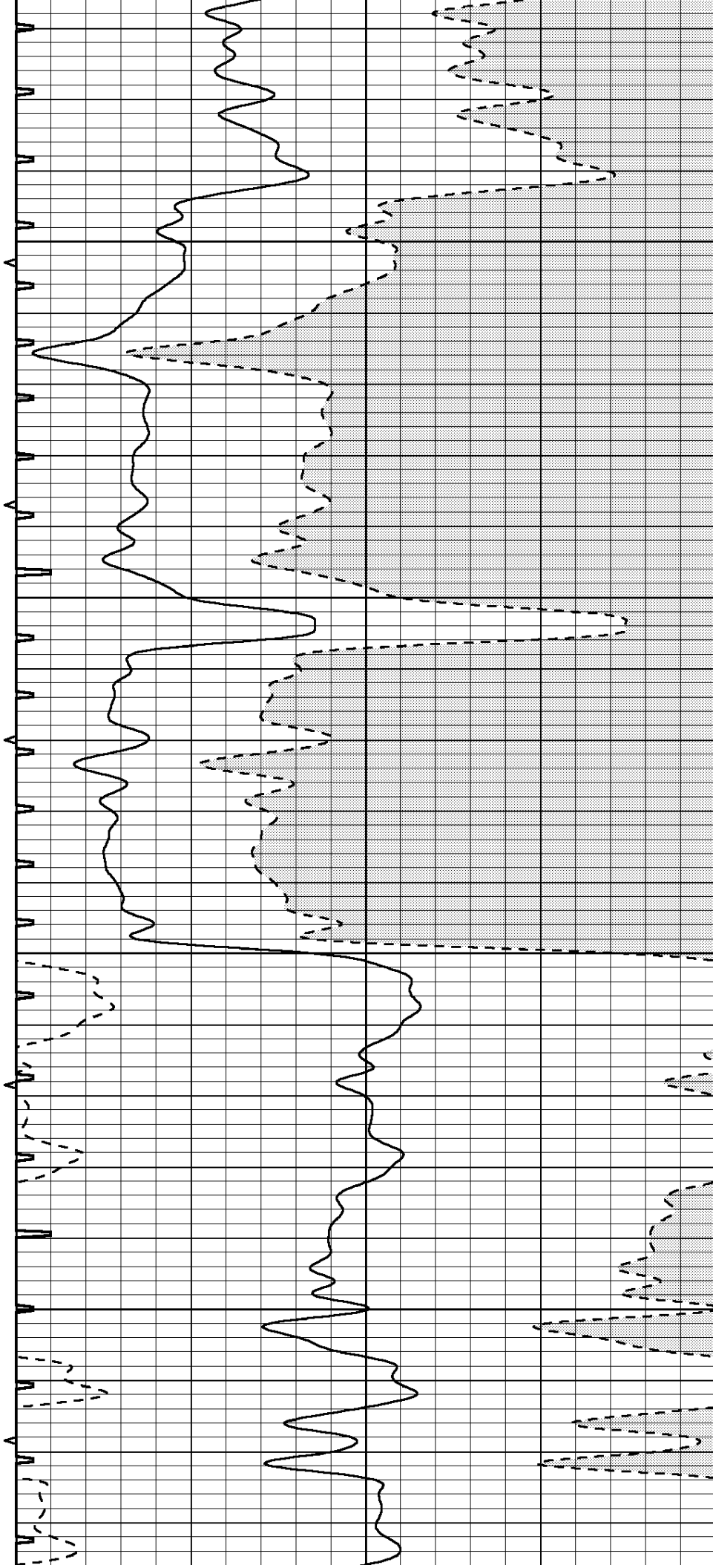


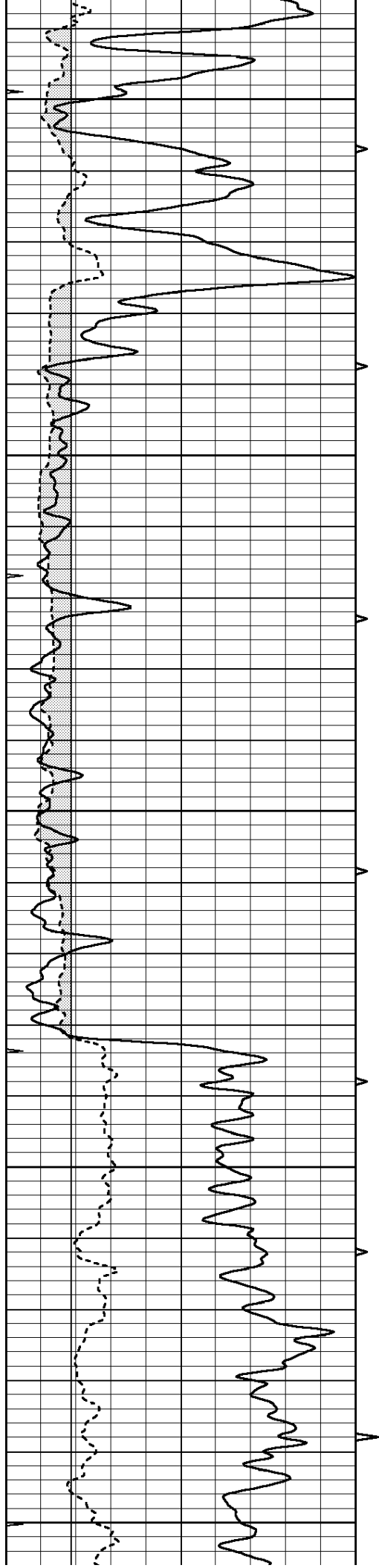
1450

1500

1550

1600





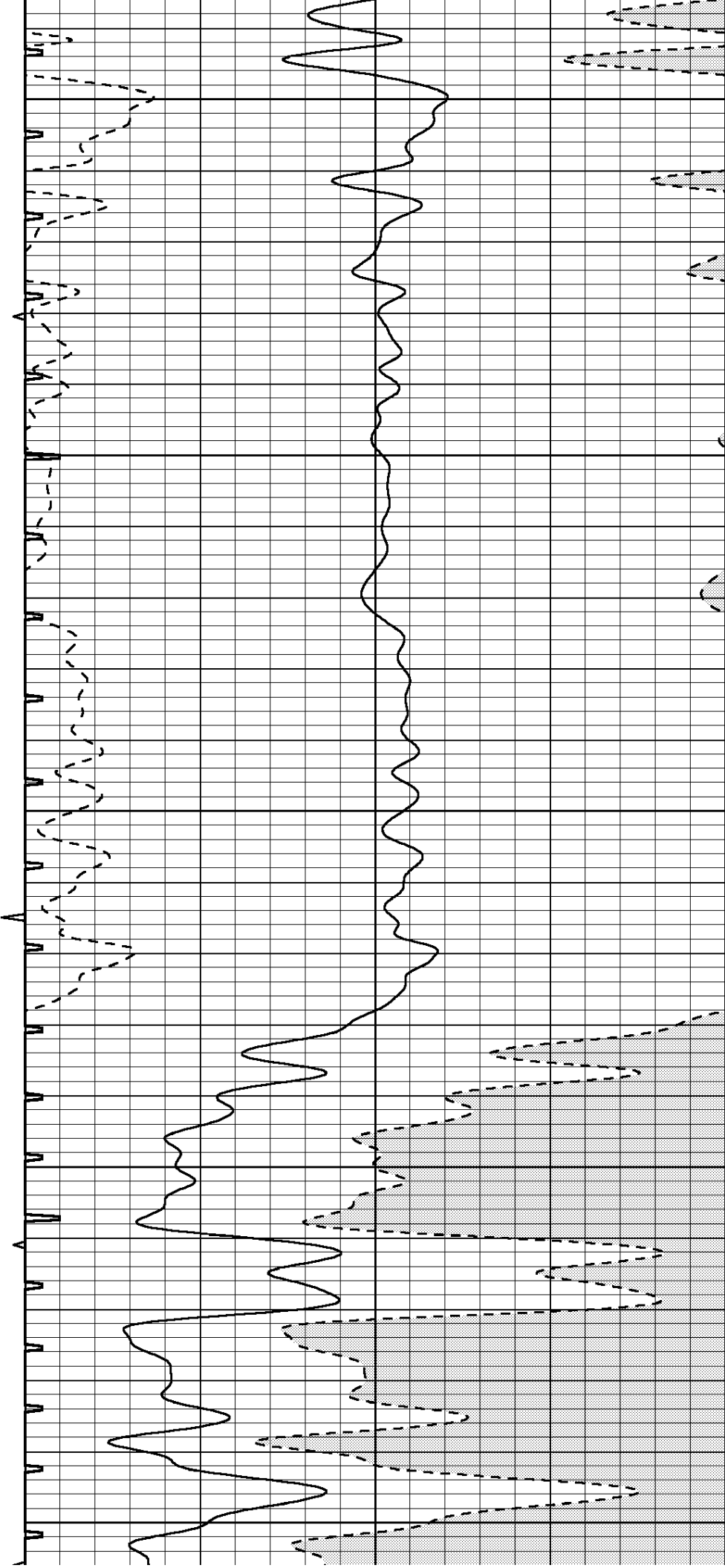
1650

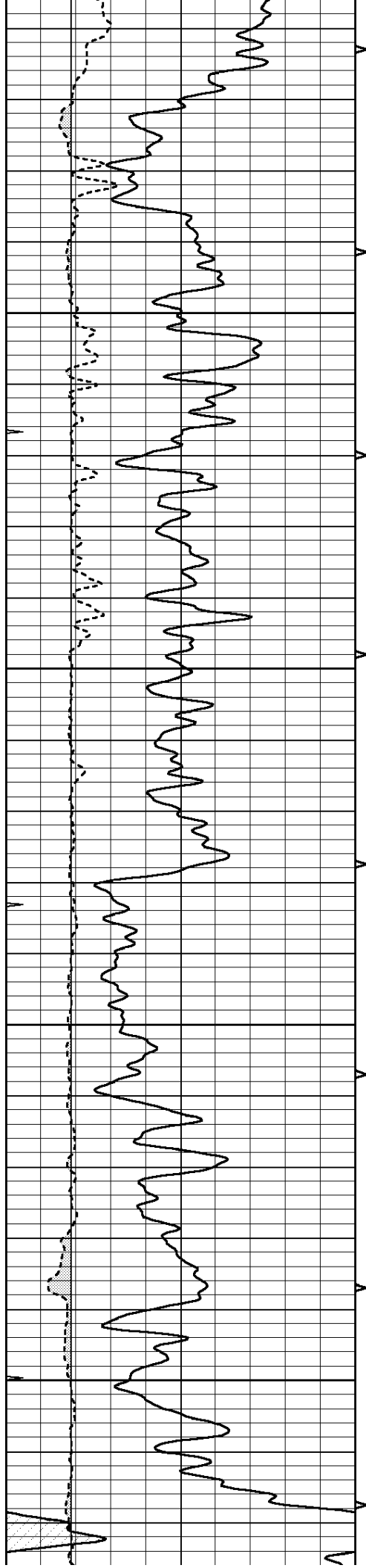
1700

1750

1800

1850



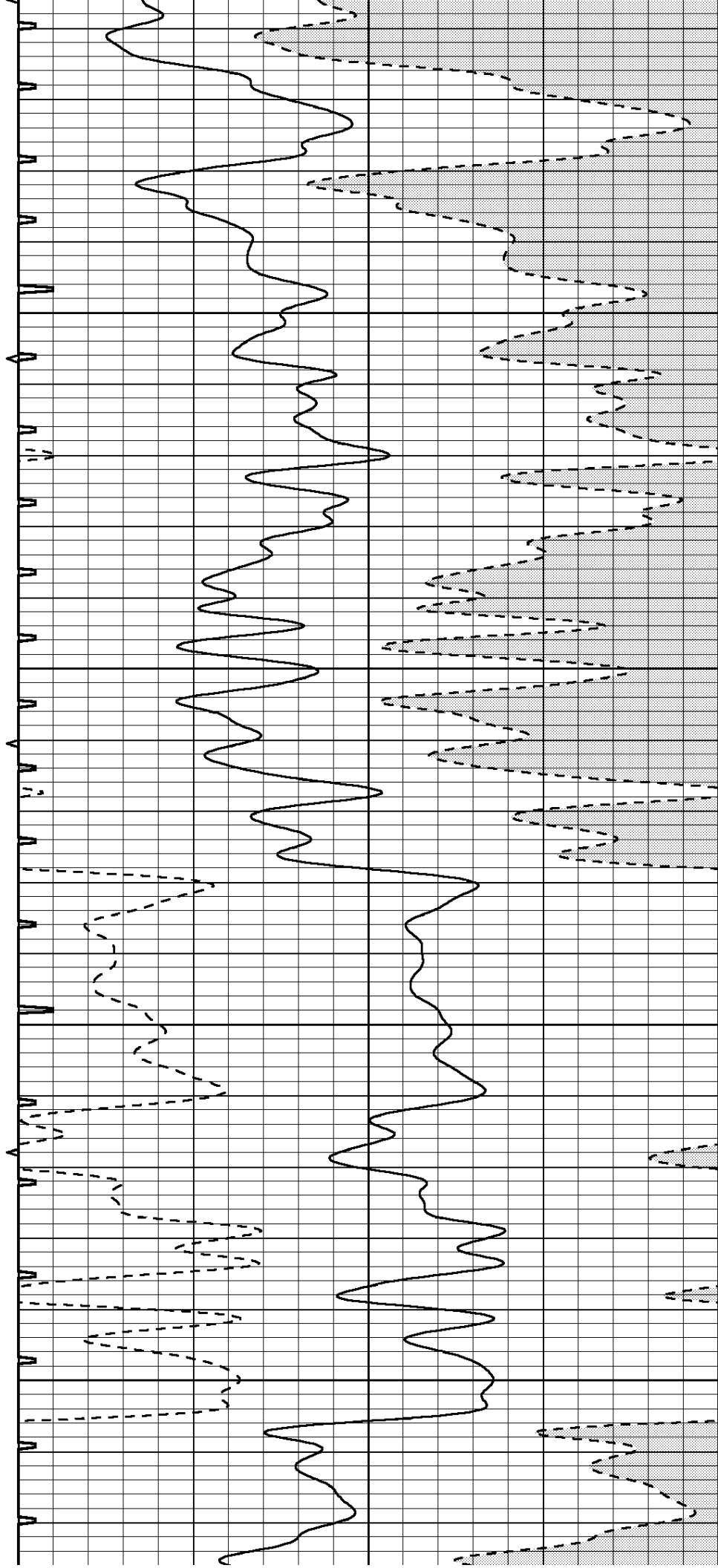


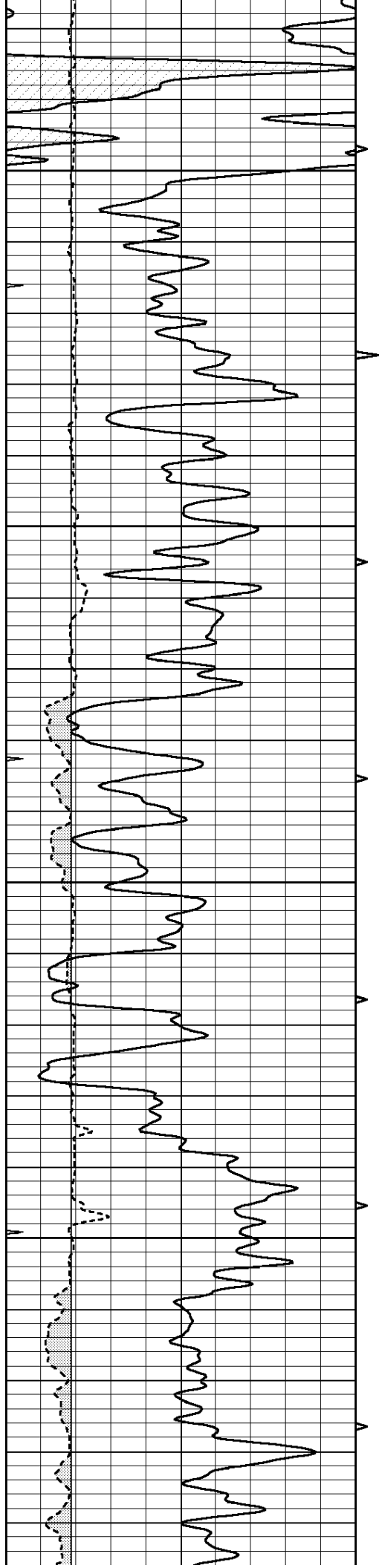
1900

1950

2000

2050



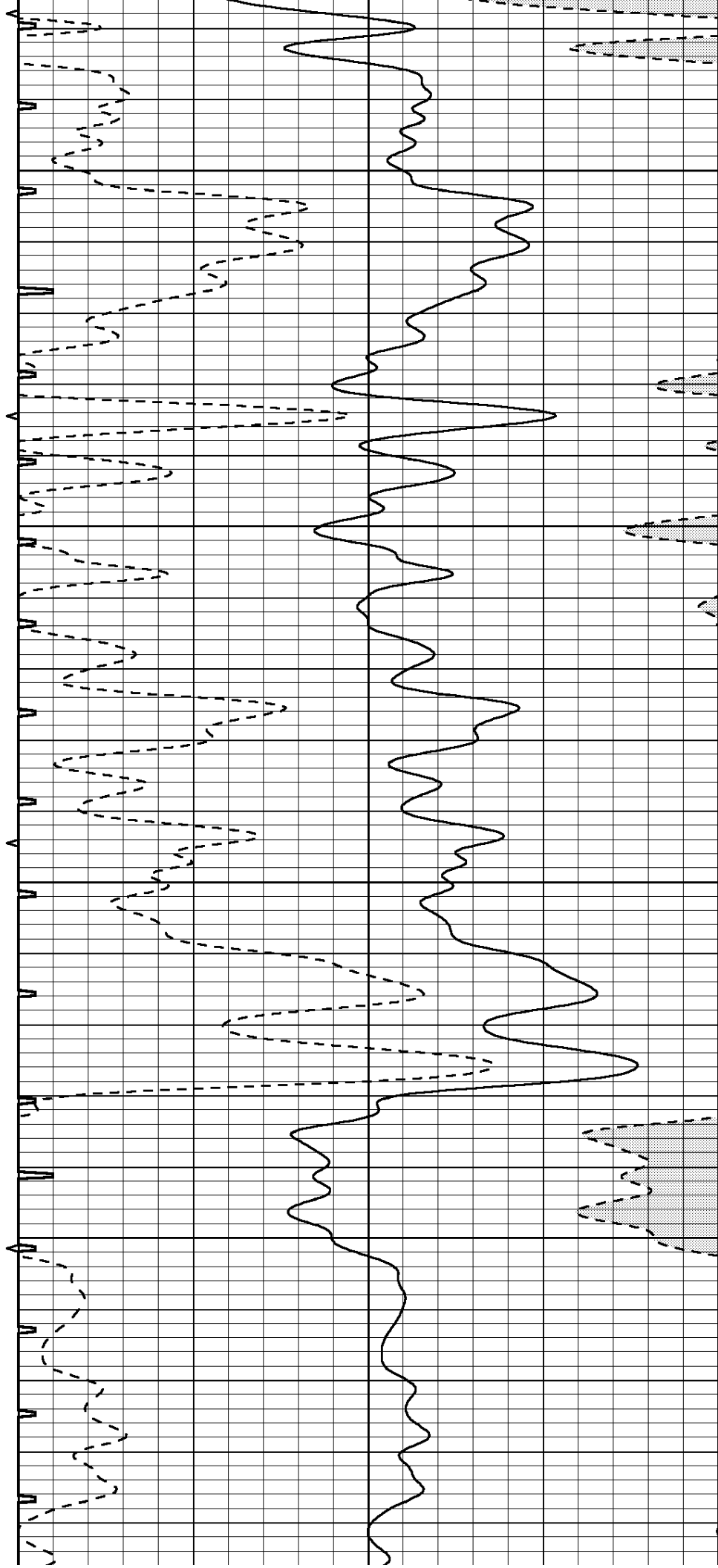


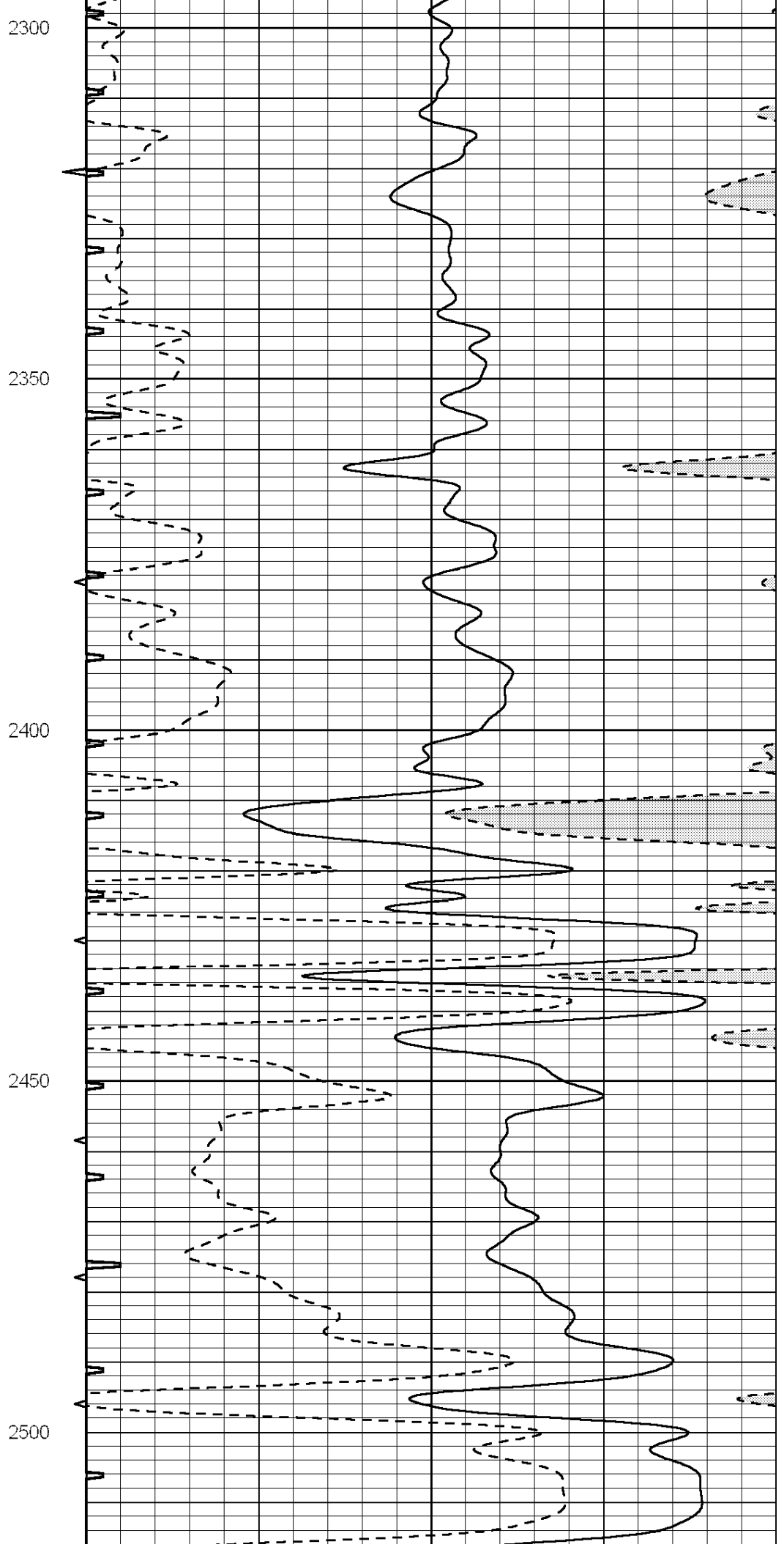
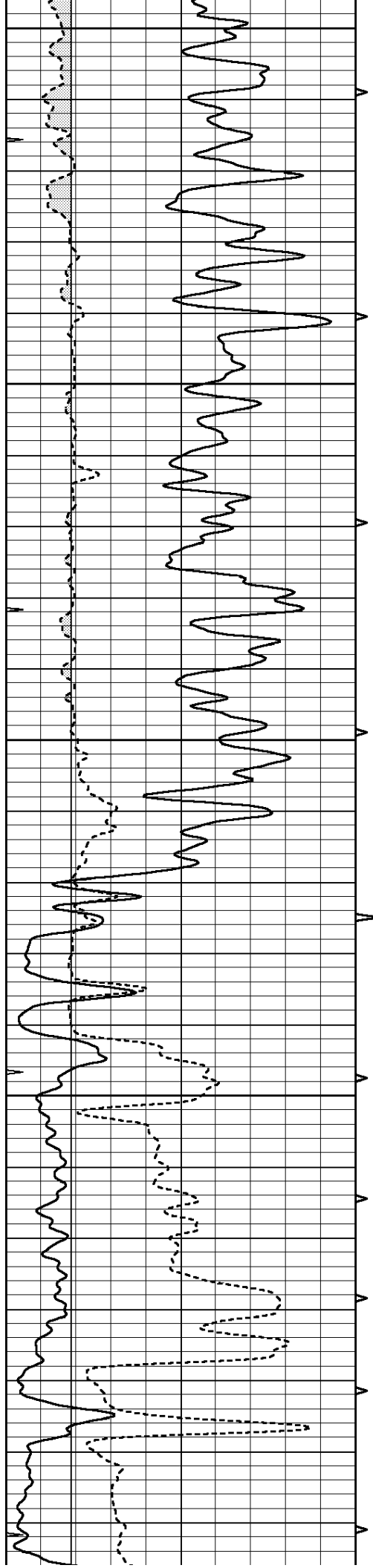
2100

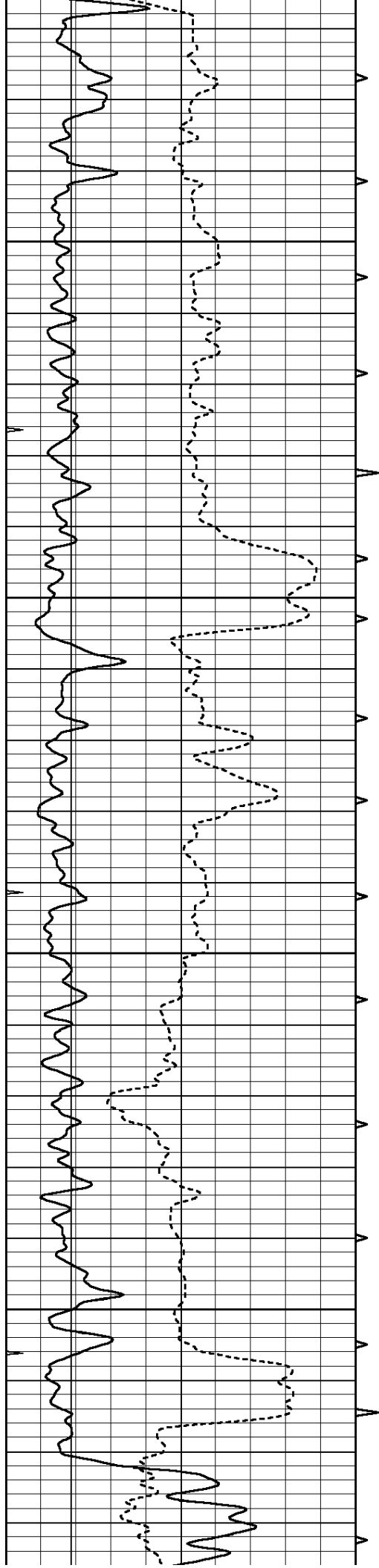
2150

2200

2250





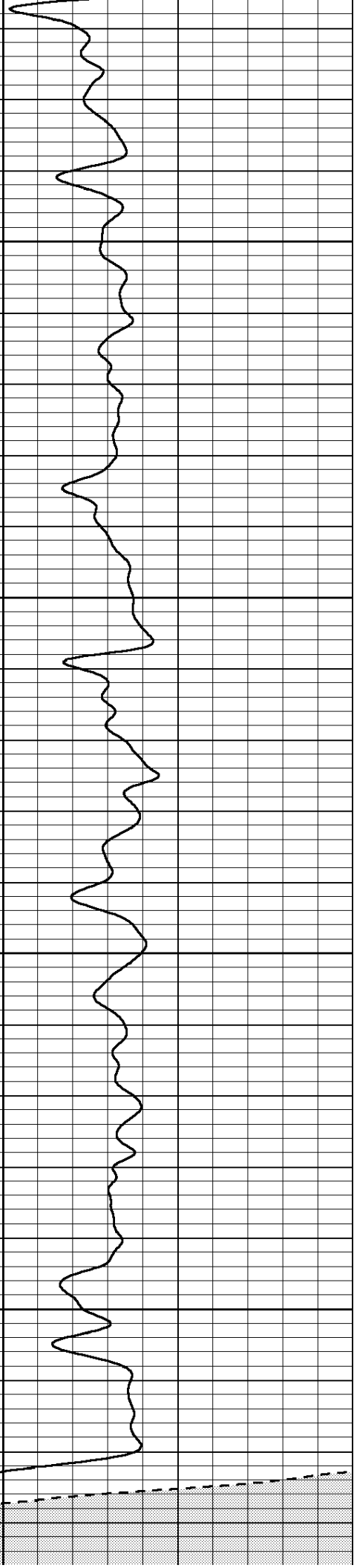
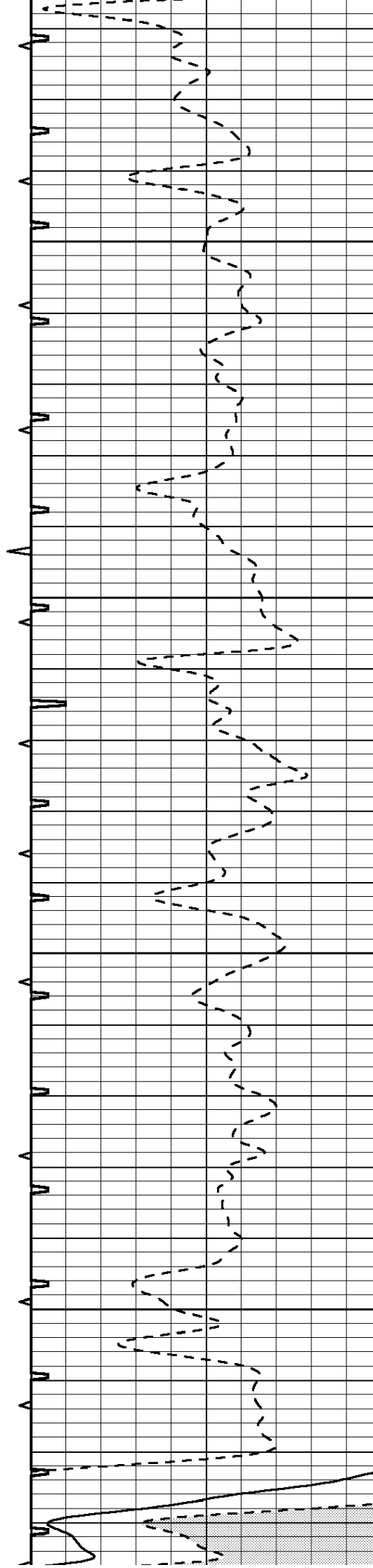


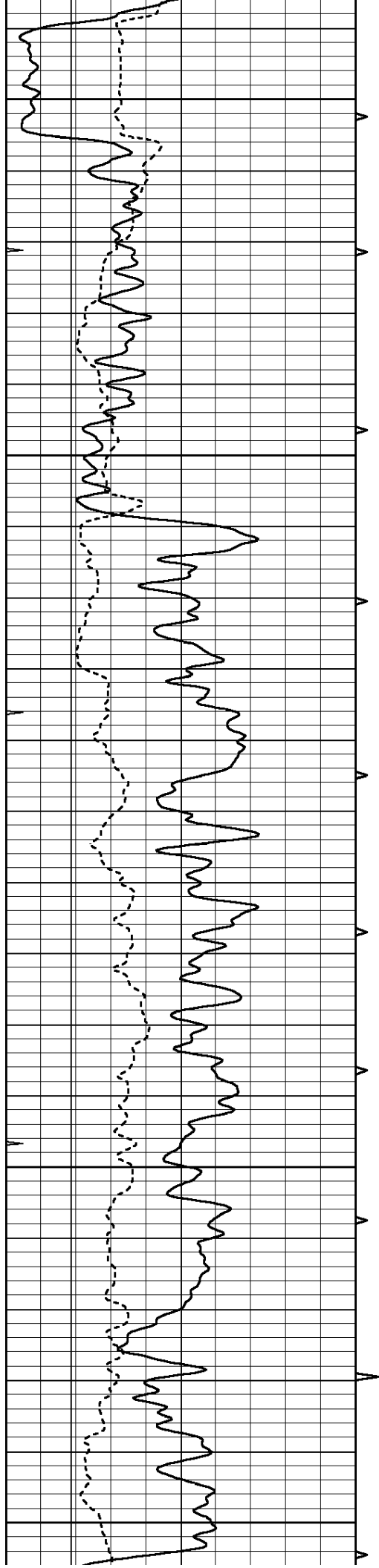
2550

2600

2650

2700





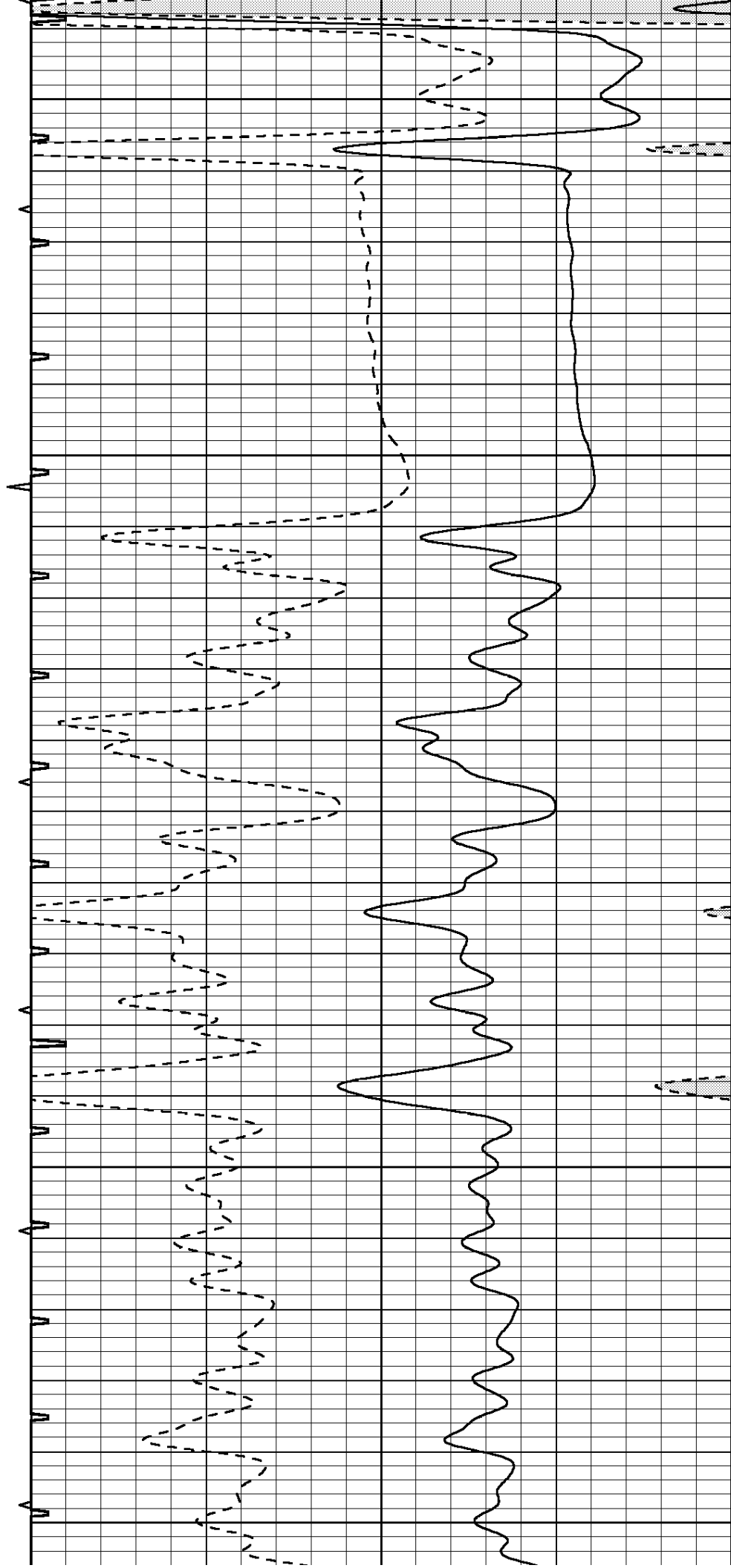
2750

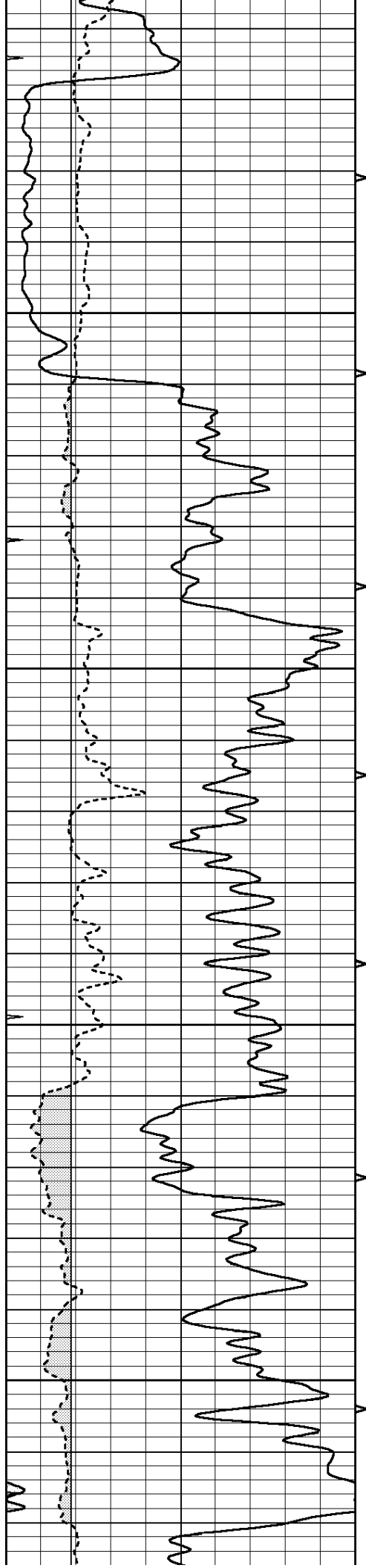
2800

2850

2900

2950



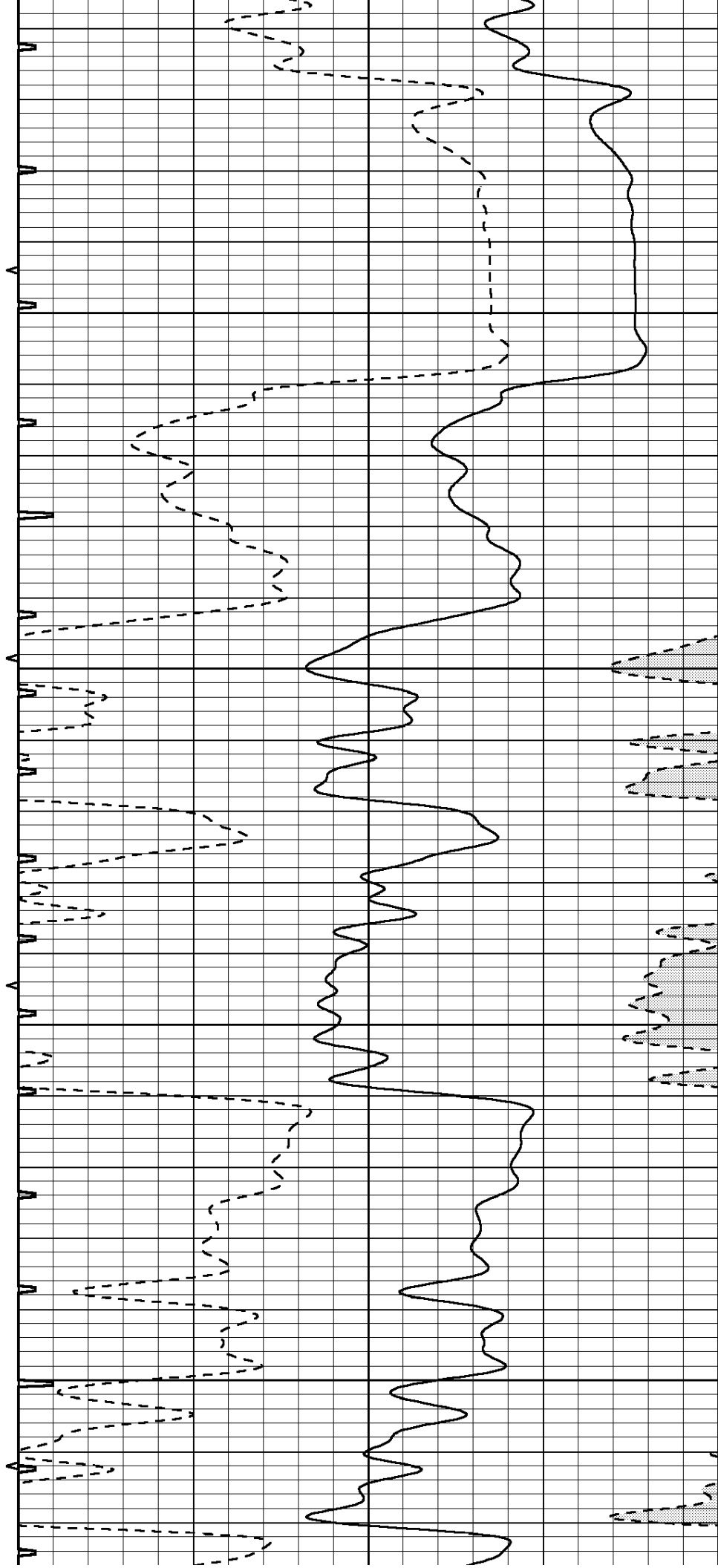


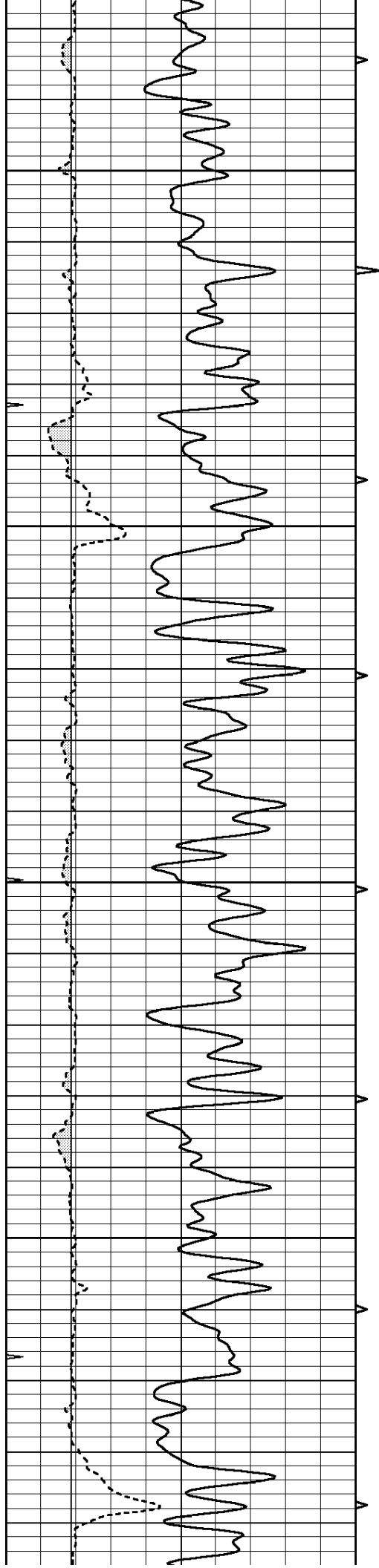
3000

3050

3100

3150



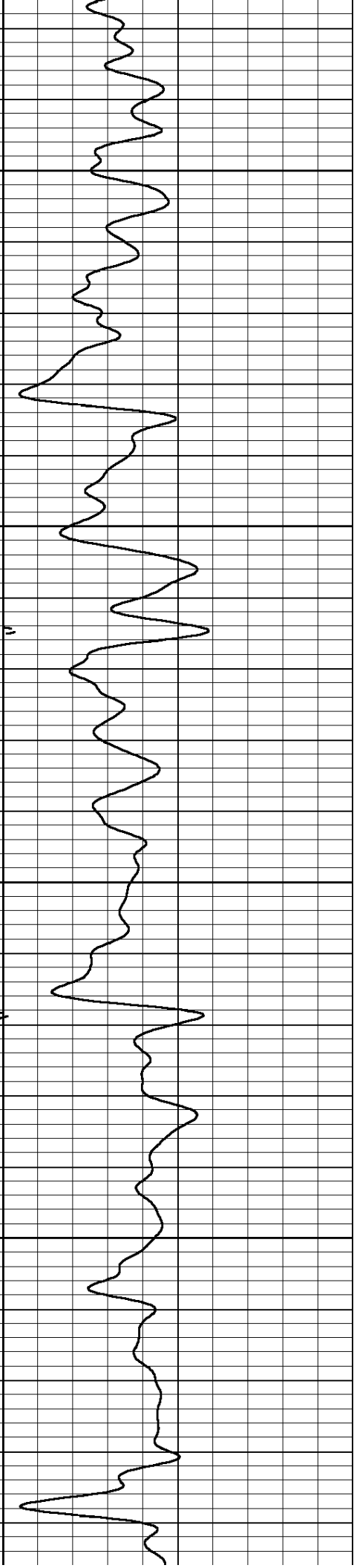
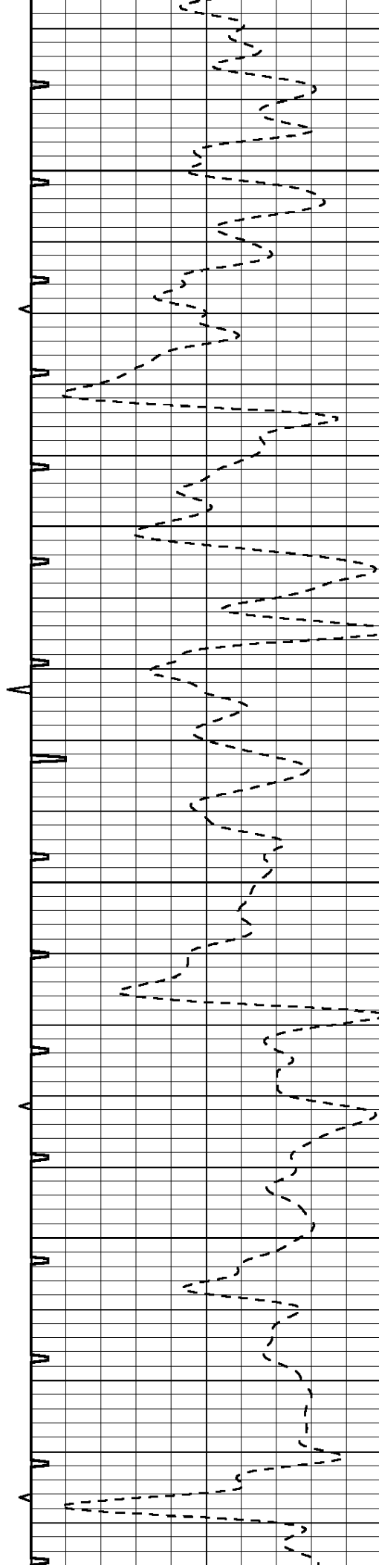


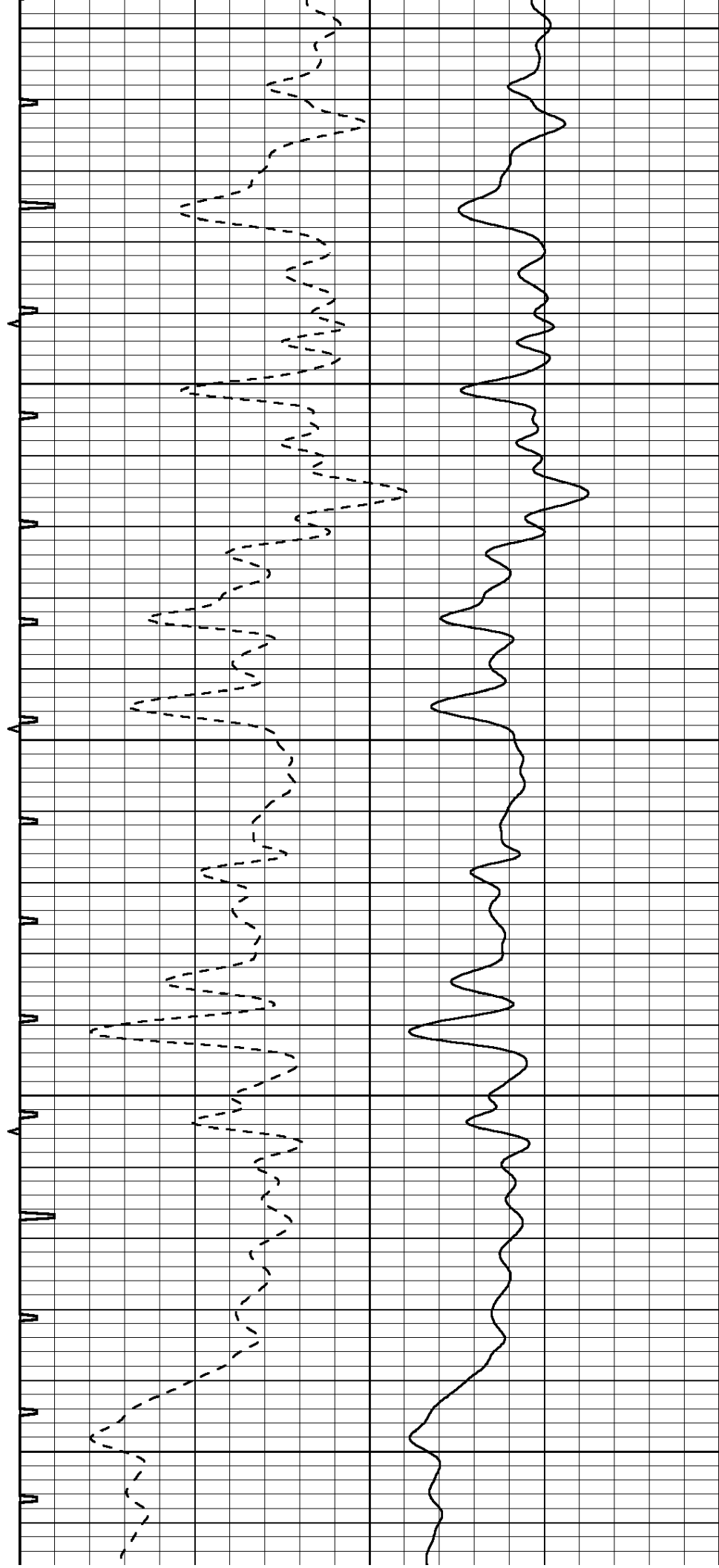
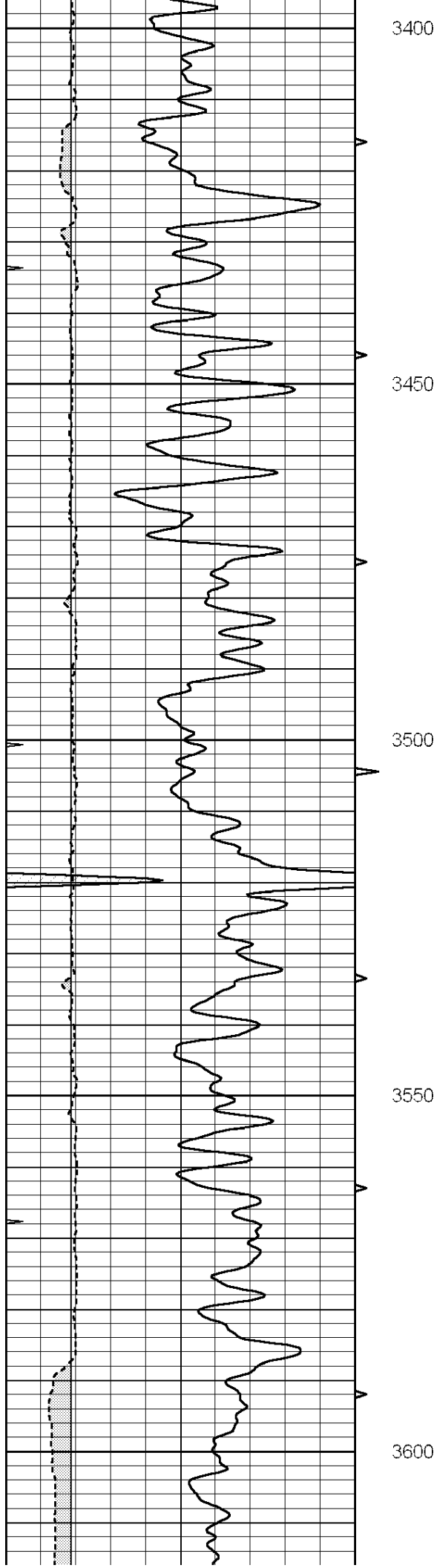
3200

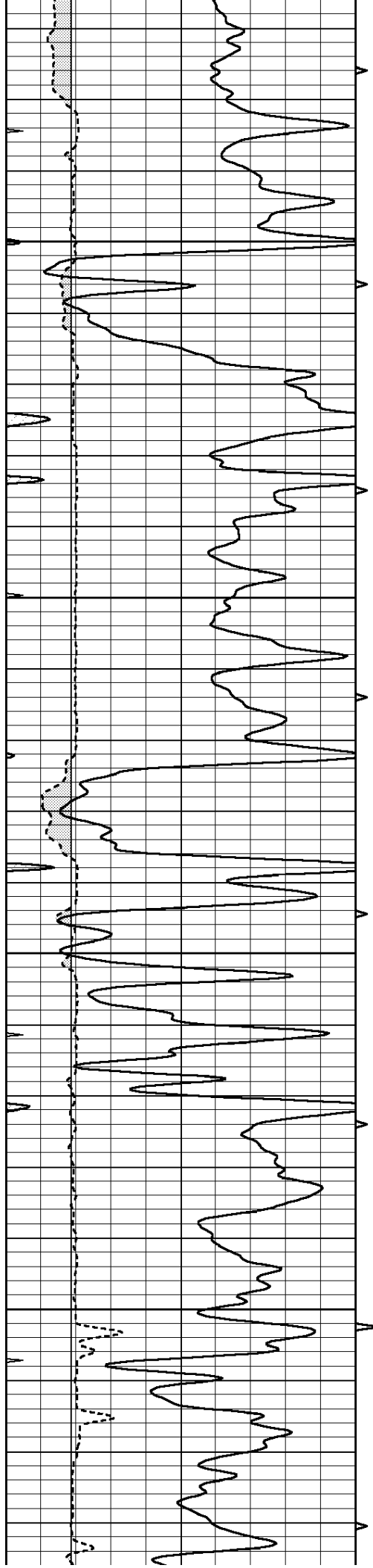
3250

3300

3350





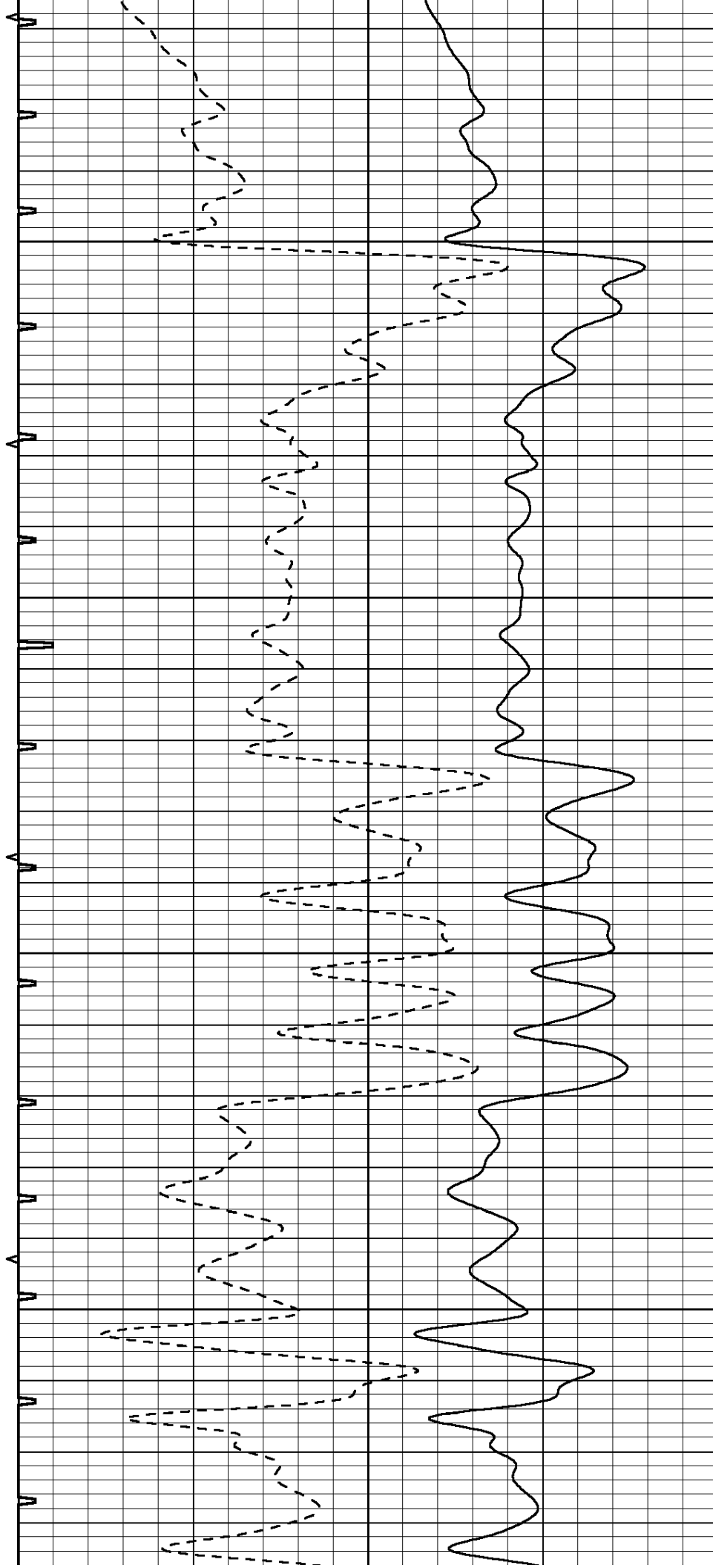


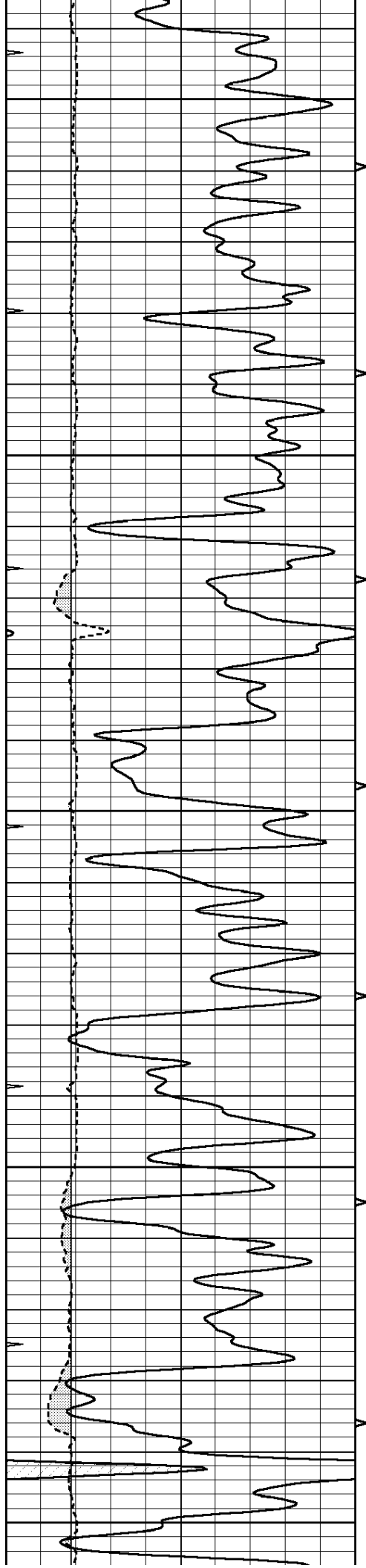
3650

3700

3750

3800





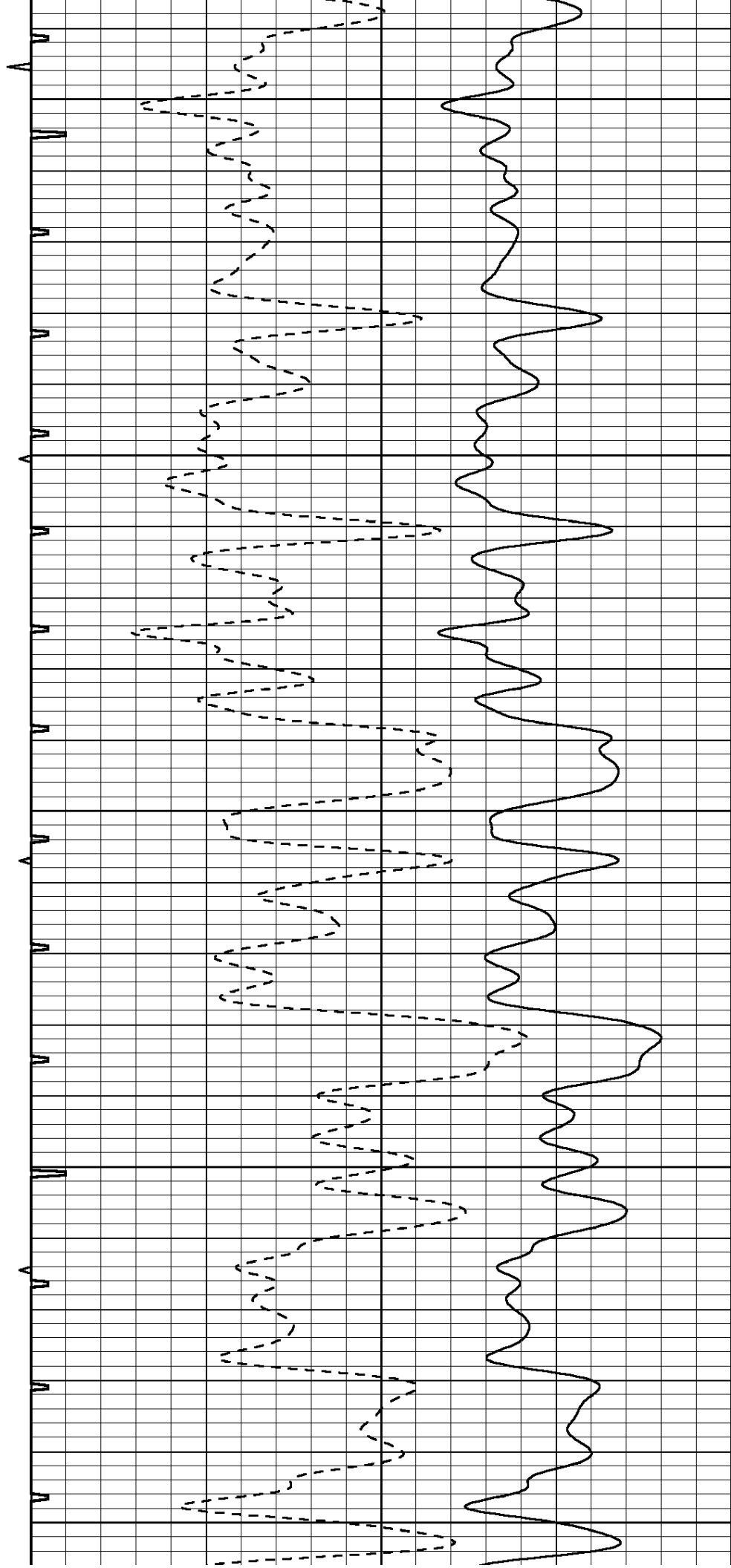
3850

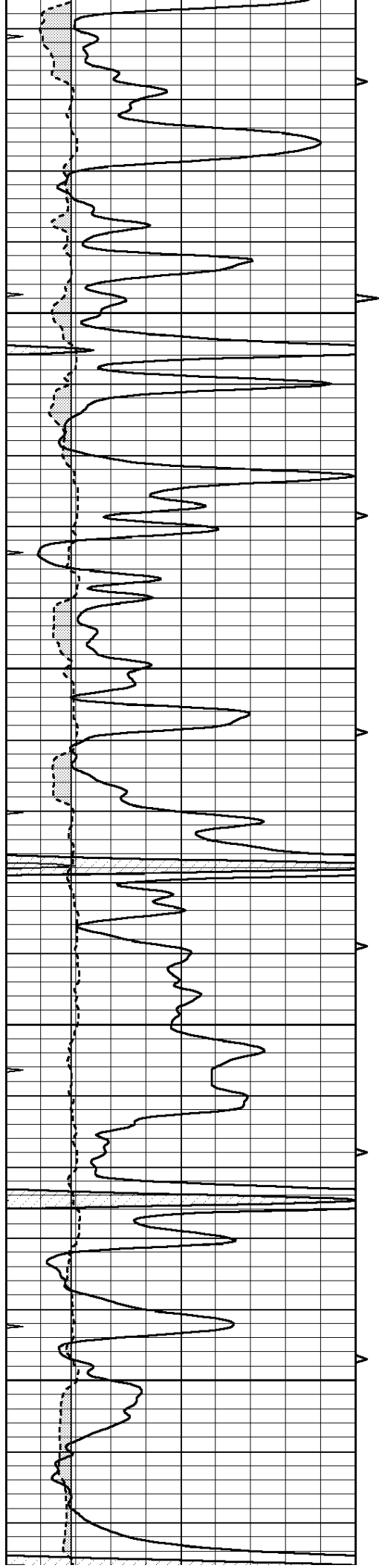
3900

3950

4000

4050



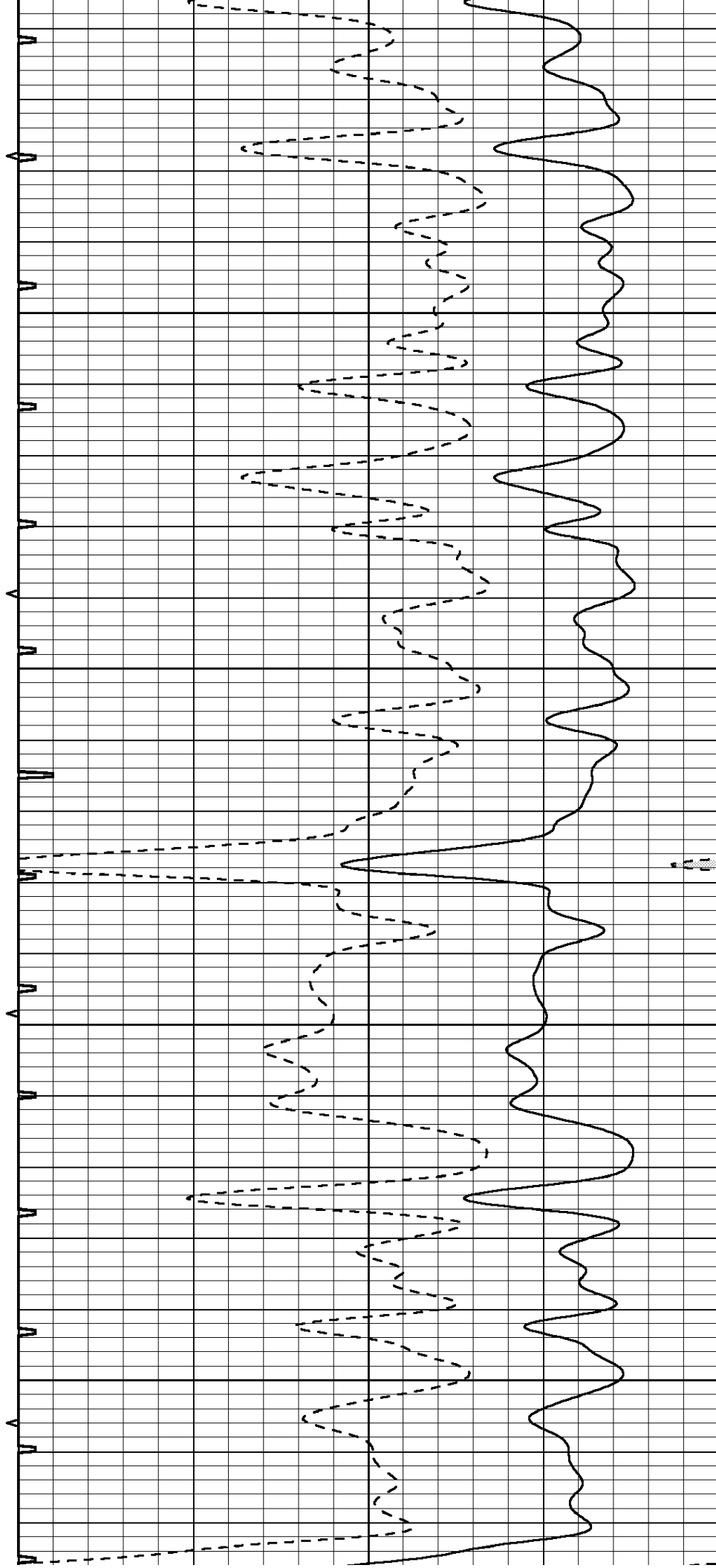


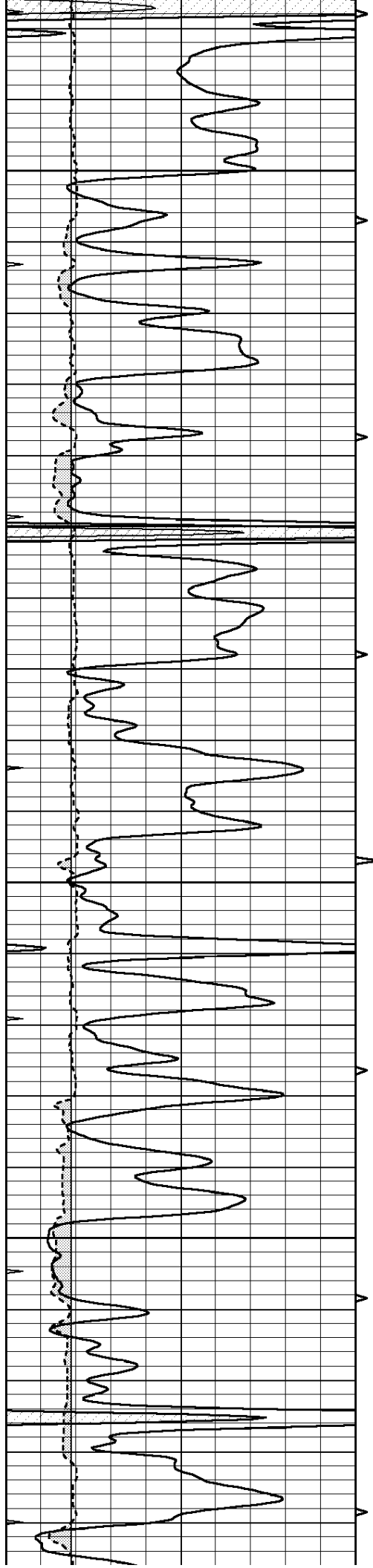
4100

4150

4200

4250



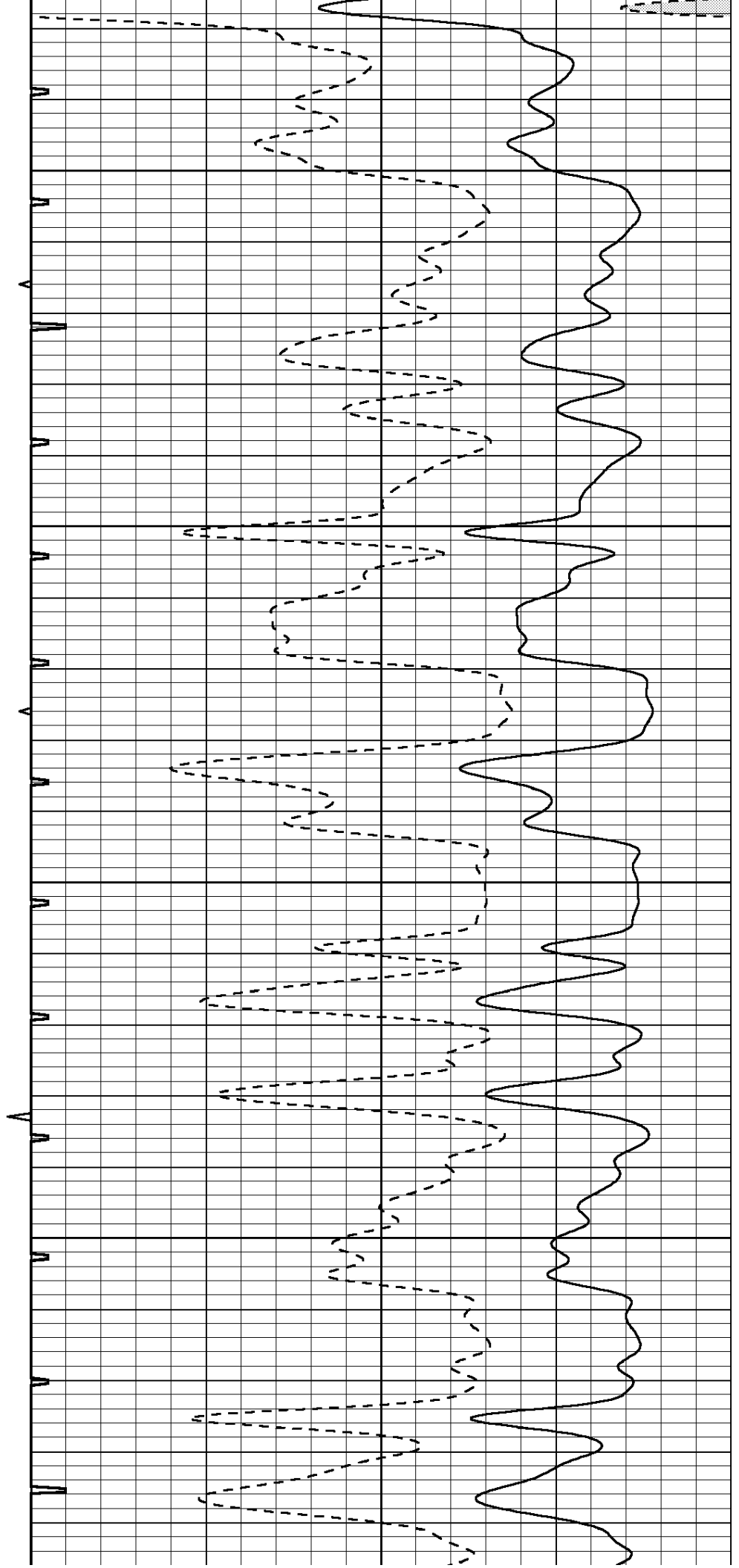


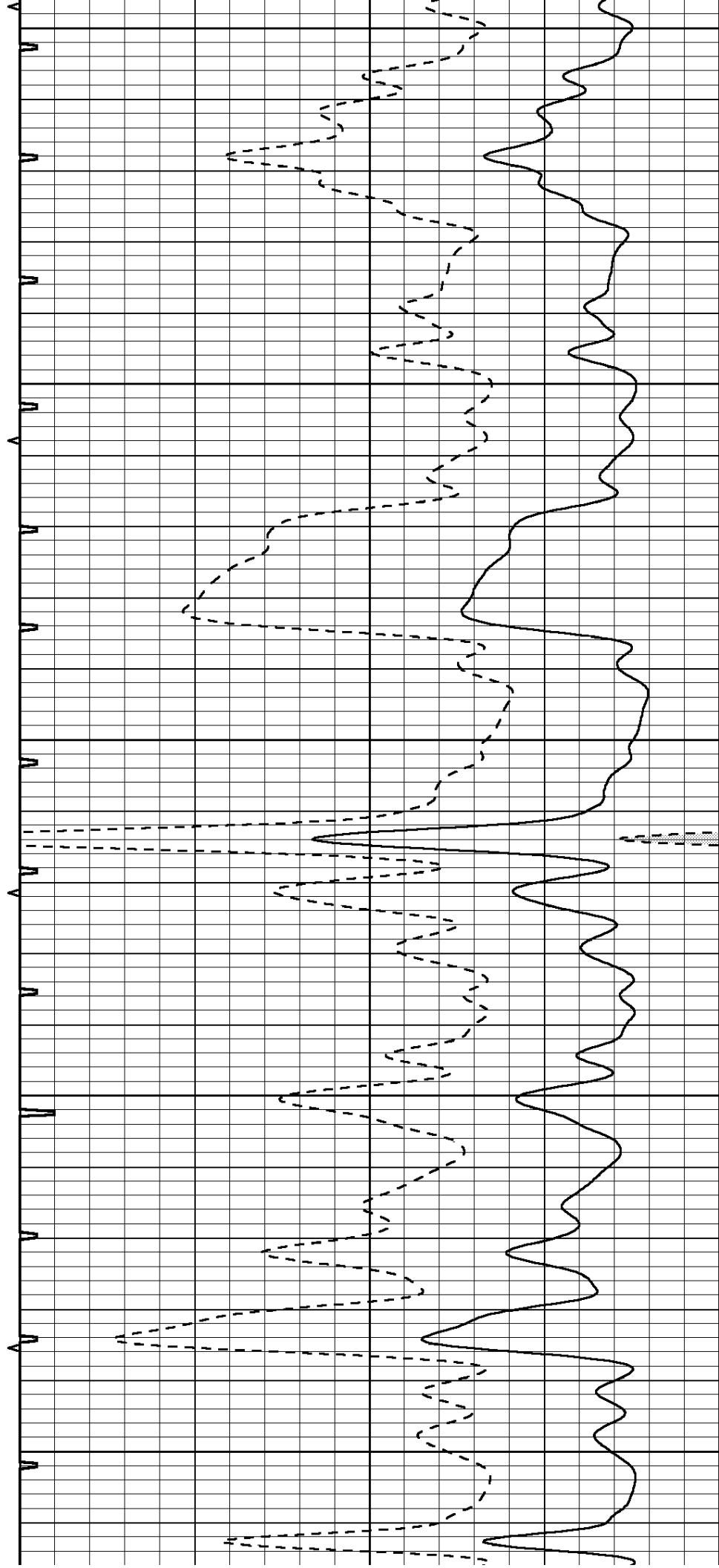
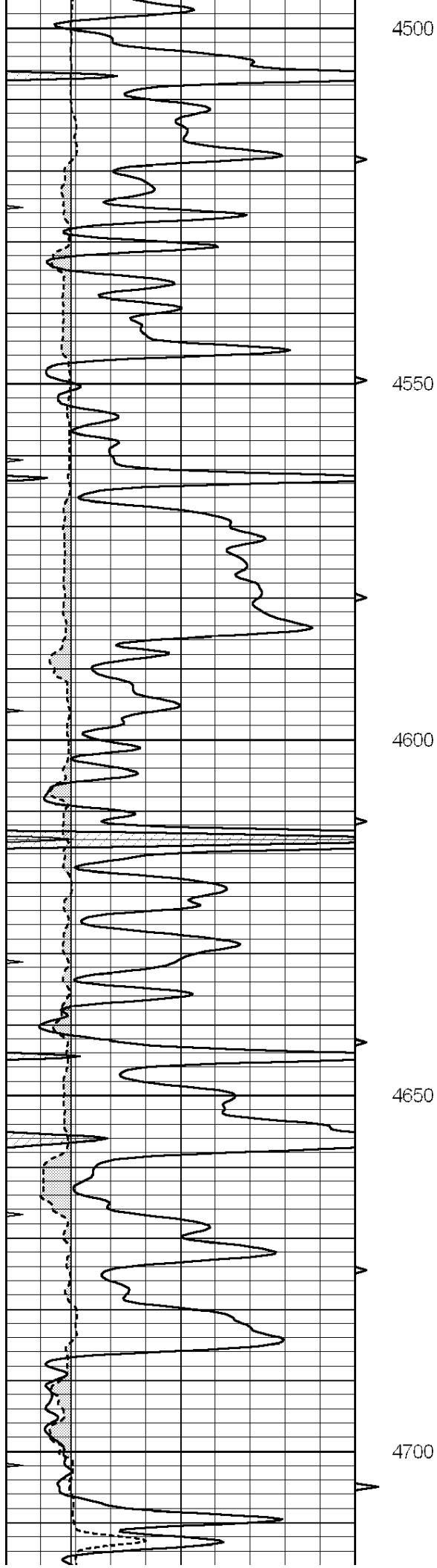
4300

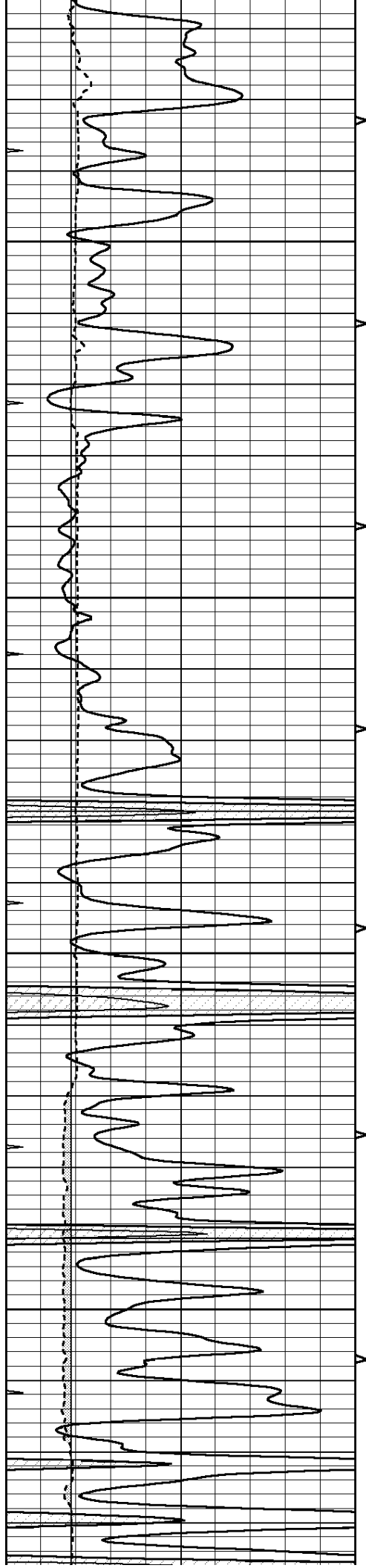
4350

4400

4450





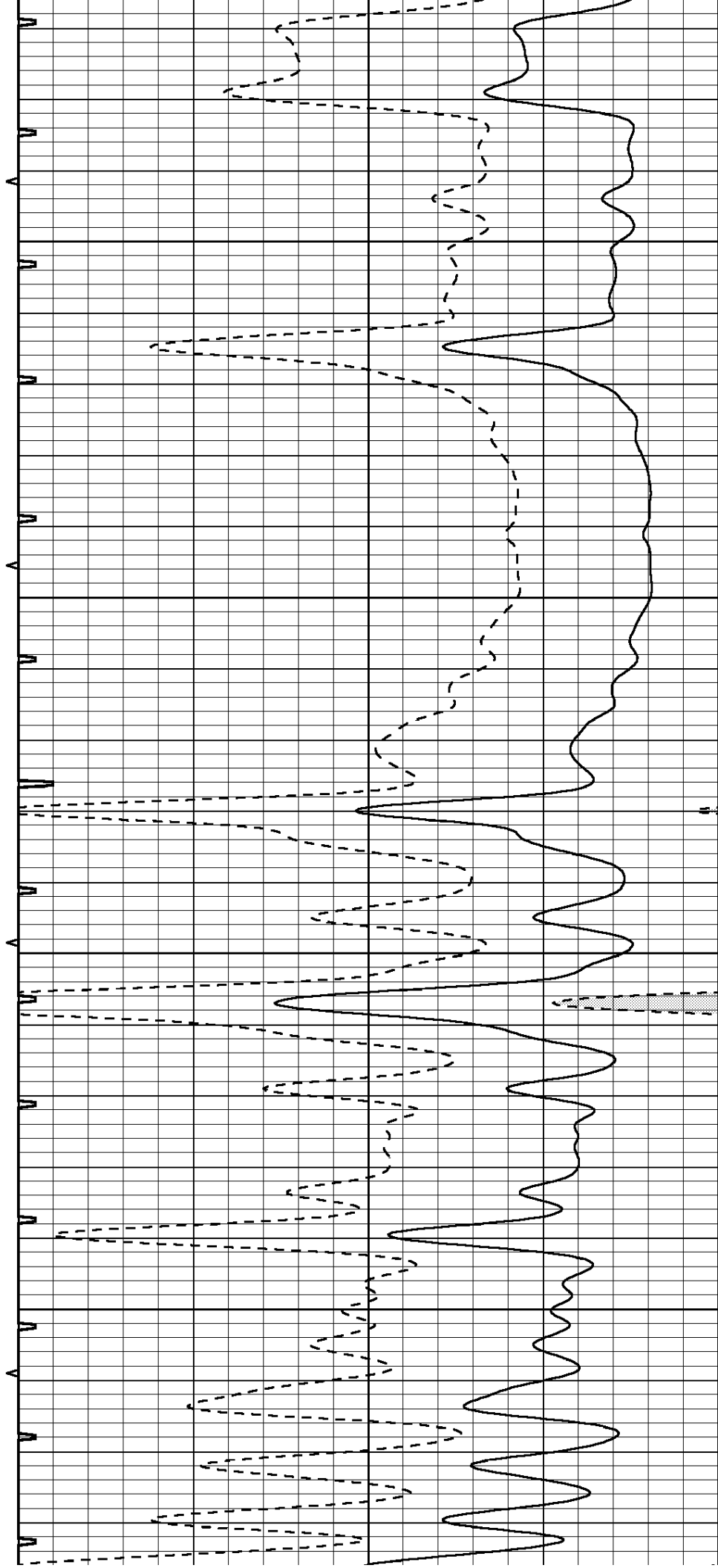


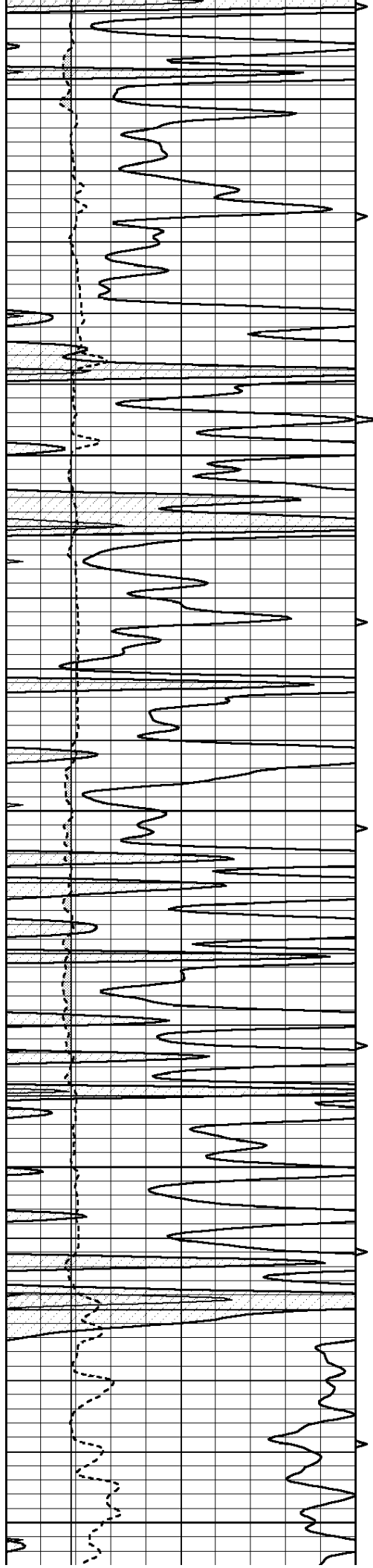
4750

4800

4850

4900





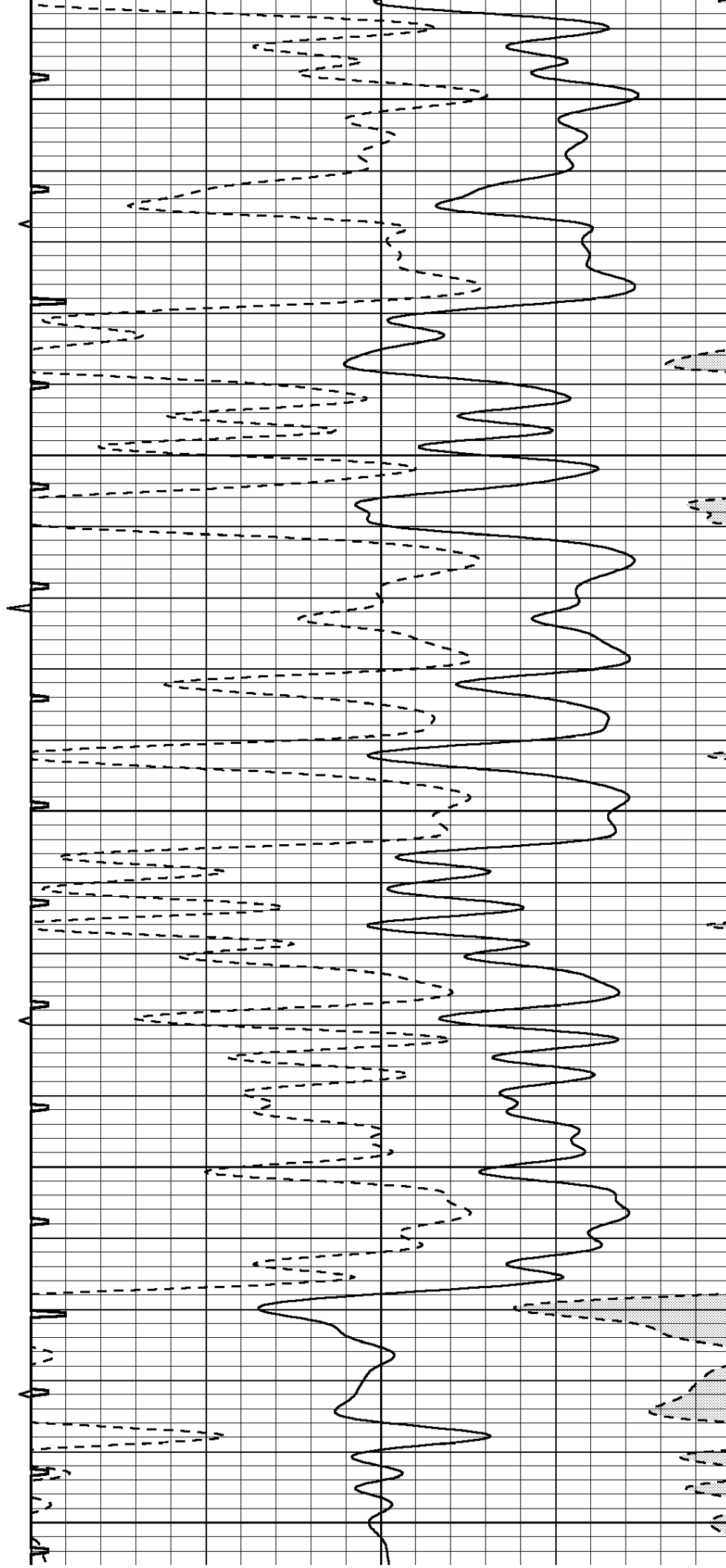
4950

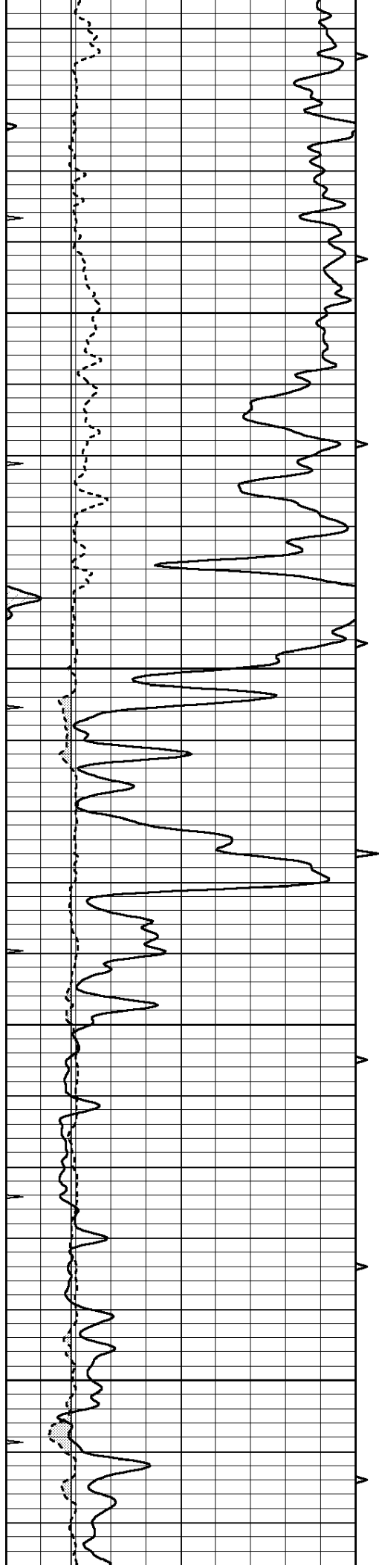
5000

5050

5100

5150



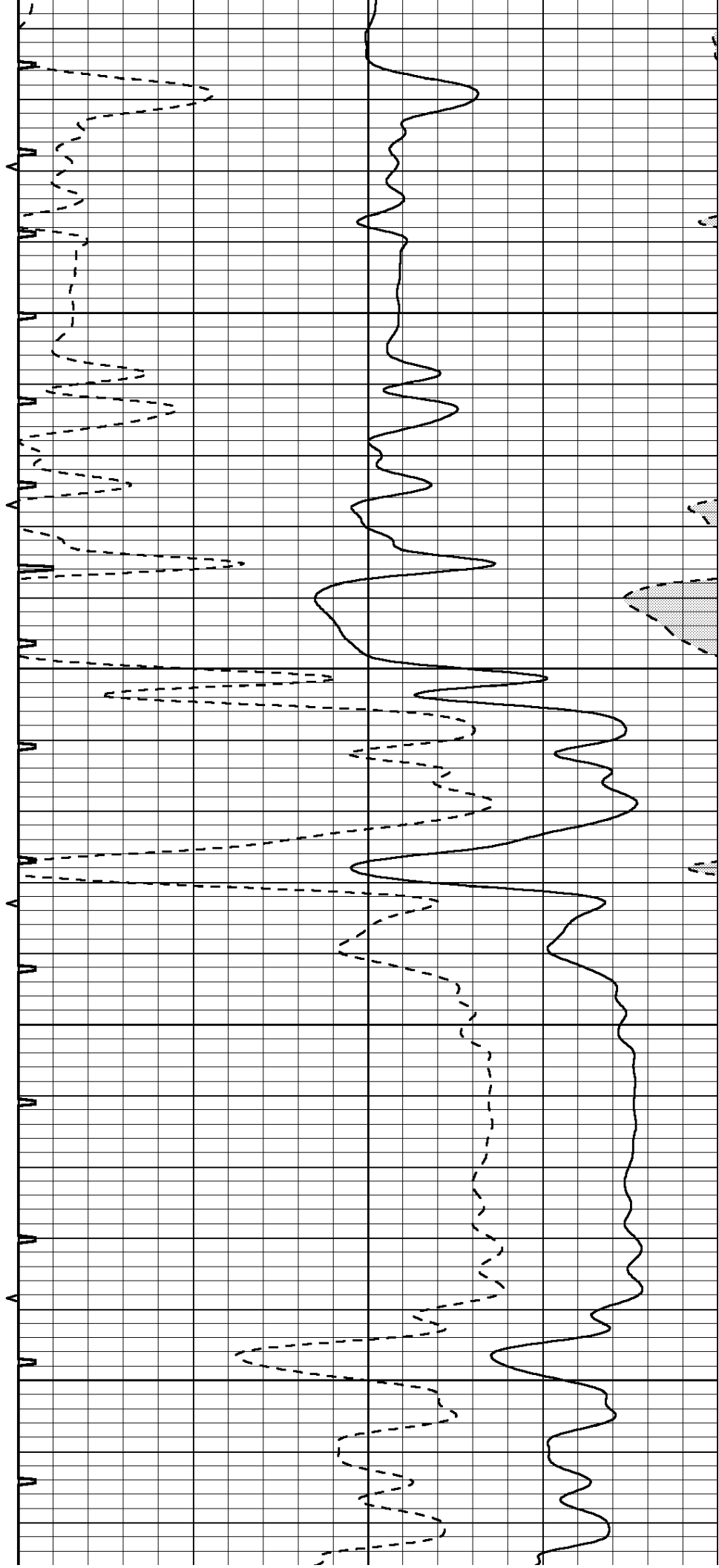


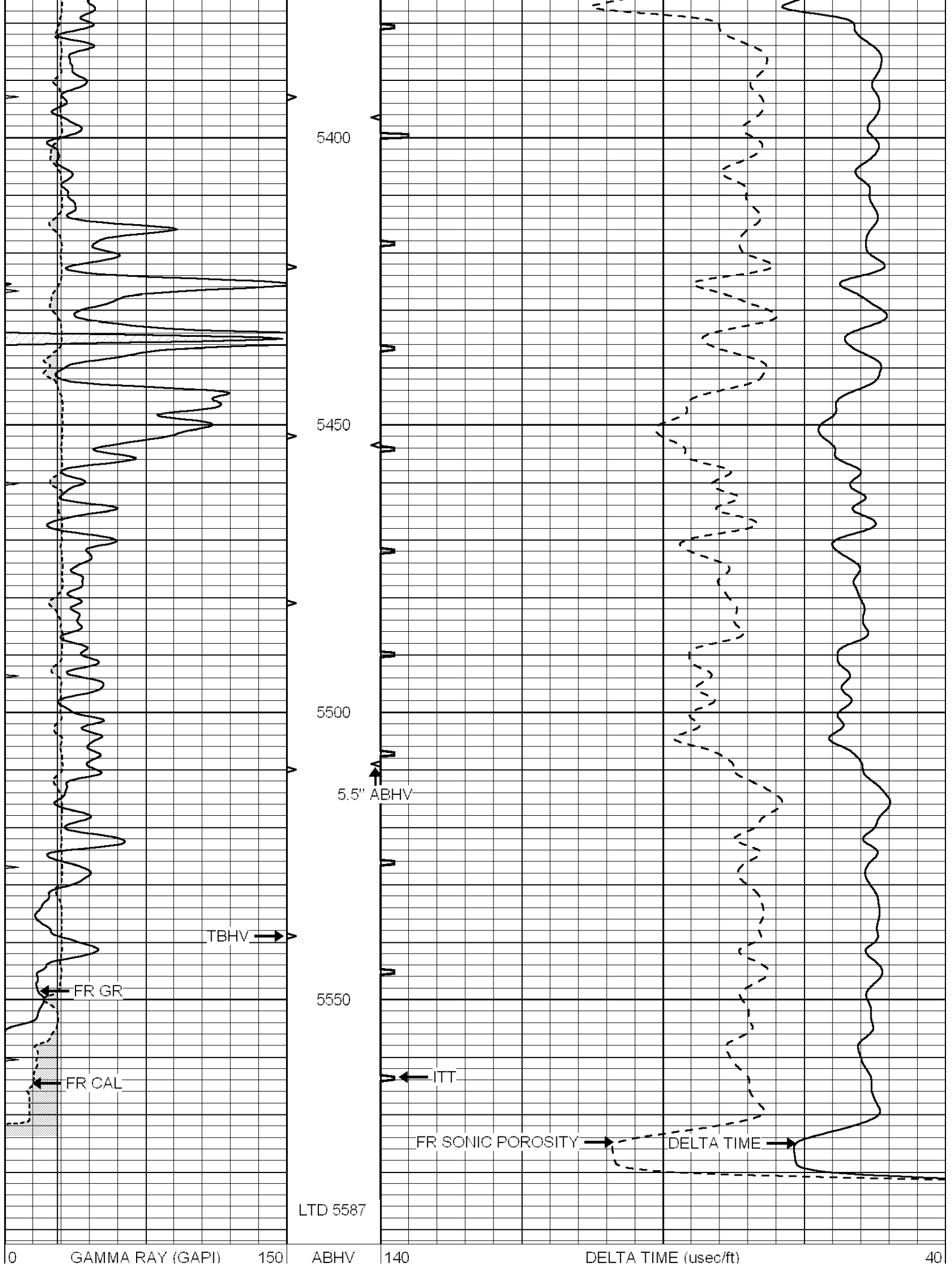
5200

5250

5300

5350





6	CALIPER (in)	16	10 (ft3)	0	30	SONIC POROSITY (pu)	-10
0	MINMK	20	TBHV	0	ITT (msec)	20	
			0 (ft3)	10			



**COMPLETION
& PRODUCTION
SERVICES CO.**

REPEAT SECTION

Database File: 011191pe.db
Dataset Pathname: pass5.2
Presentation Format: slt
Dataset Creation: Tue Jul 16 05:21:15 2013
Charted by: Depth in Feet scaled 1:240

0	GAMMA RAY (GAPI)	150	ABHV	140	DELTA TIME (usec/ft)	40
6	CALIPER (in)	16	10 (ft3) 0	30	SONIC POROSITY (pu)	-10
0	MINMK	20	TBHV	0	ITT (msec)	20
			0 (ft3) 10			

