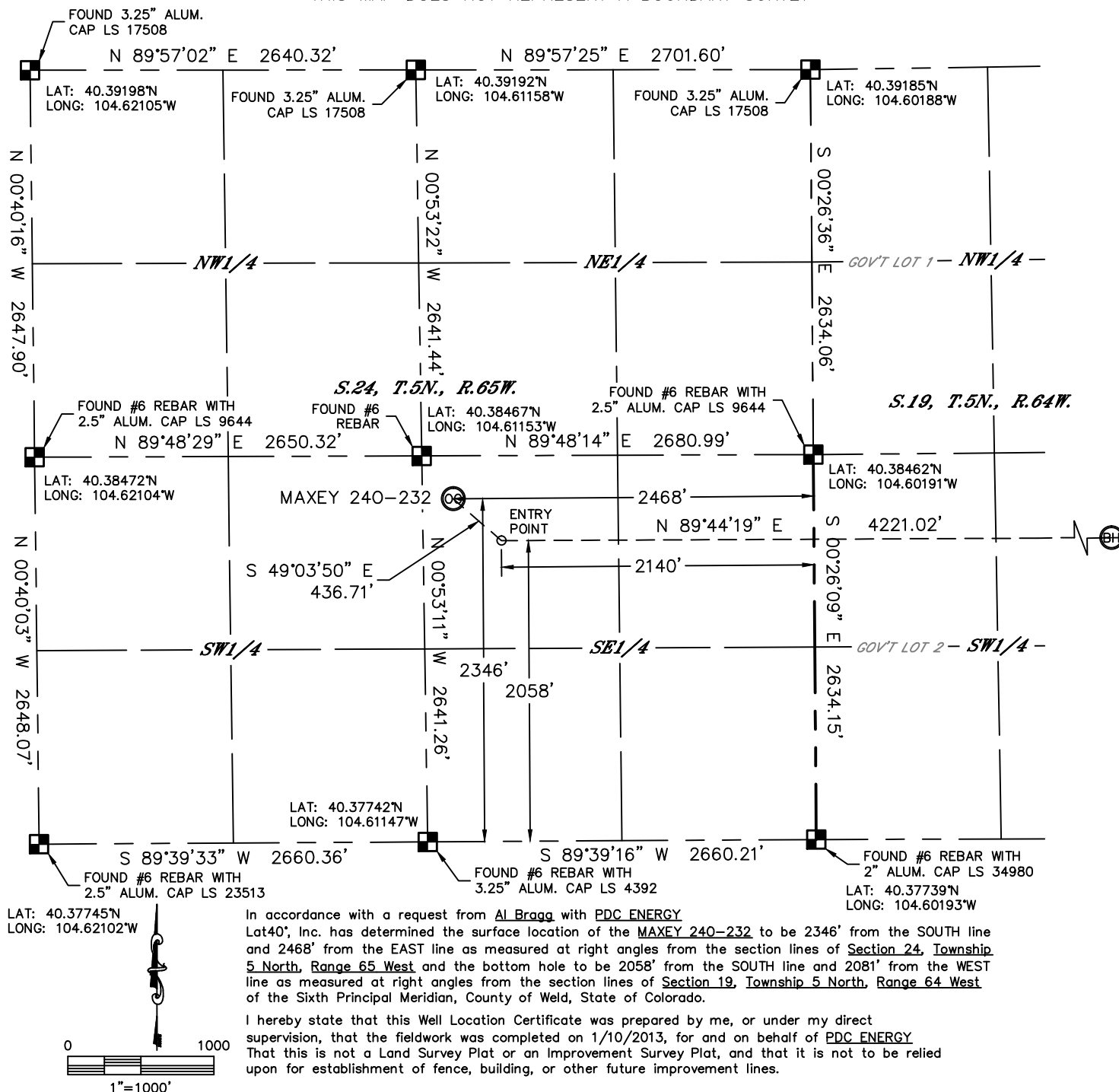


WELL LOCATION CERTIFICATE

THIS MAP DOES NOT REPRESENT A BOUNDARY SURVEY

SECTION: 24
TOWNSHIP: 5N
RANGE: 65W





NOTE:

- 1) Bearings shown are Grid Bearings of the Colorado State Plane Coordinate System, North Zone, North American Datum 1983/2007. The lineal dimensions as contained herein are based upon the "U.S. Survey Foot."
- 2) Ground elevations are based on an observed GPS elevation (NAVD 1988 DATUM).
- 3) IMPROVEMENTS: See LOCATION DRAWING for all visible improvements within 400' of disturbed area.
- 4) SURFACE USE: CROPLAND
- 5) INSTRUMENT OPERATOR: BRIAN ROTTINGHAUS

NOTE

According to Colorado law, you must commence any legal action based upon any defect in this W.L.C. within three years after you discover such defect. In no event, may any action based upon any defect in this survey be commenced more than ten years after the date of the certificate shown hereon. (13-80-105 C.R.S.)

LEGEND

-  = ALIQUOT MONUMENT AS DESCRIBED
 = CALCULATED POSITION

SURFACE LOCATION

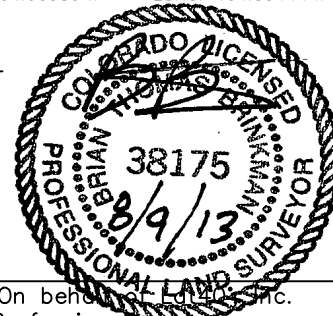
LAT: 40.38386°N
LONG: 104.61076°W
PDOP: 1.7
ELEV: 4636'
1/4,1/4: NW1/4SE1/4
NEAREST PROPERTY LINE: 211' WEST

ENRTY POINT

LAT: 40.38306°N
LONG: 104.60959°W

BOTTOM HOLE

LAT: 40.38300°N
LONG: 104.59444°W



SHEET 1 OF 2

Brian T. Brinkman—On behalf of Ed 40, Inc.

Colorado Licensed Professional
Land Surveyor No. 38175

DATE: rev 8/9/2013
PROJECT#: 2013003

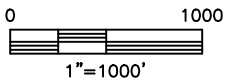
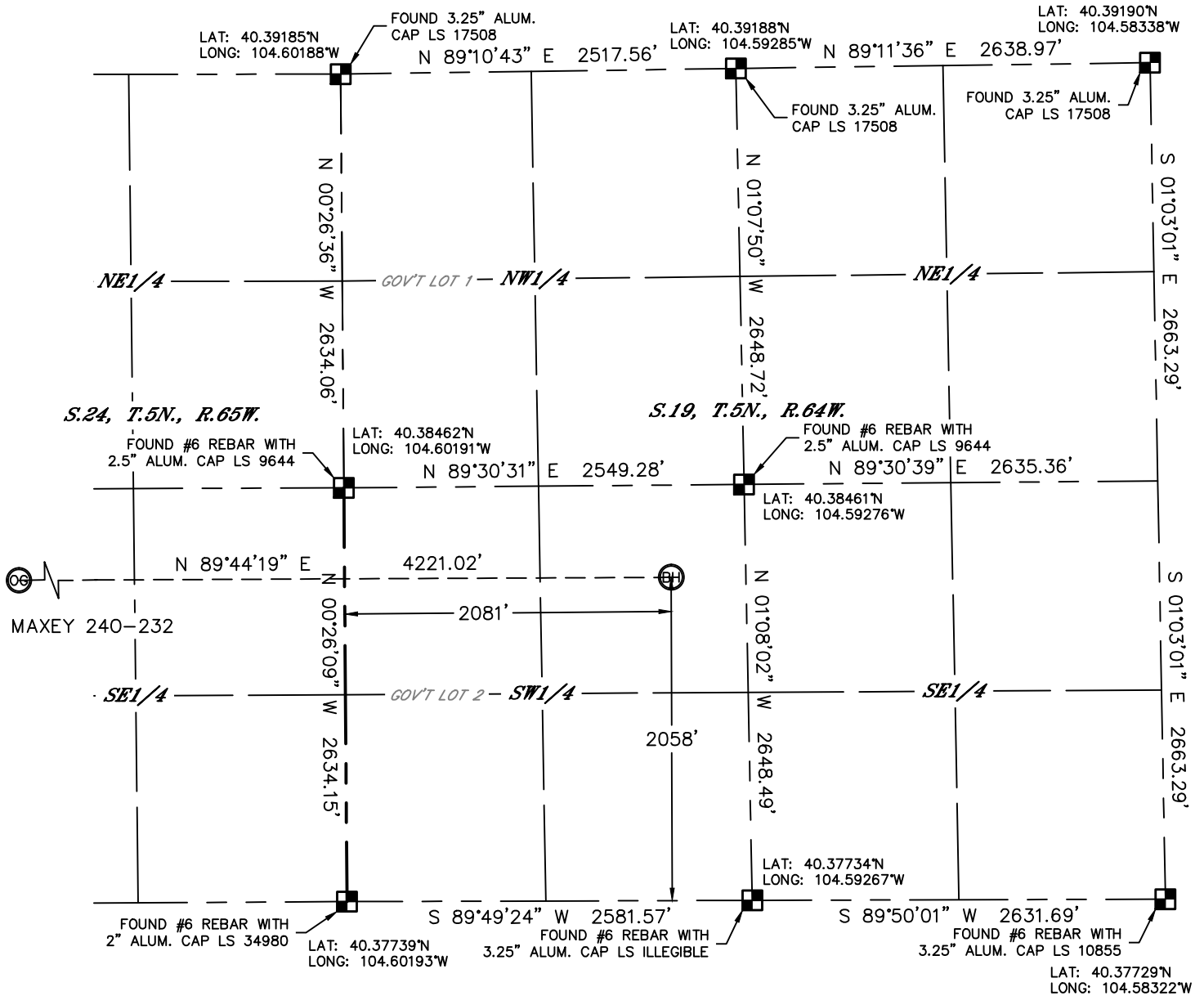


Lat40°, Inc. 1635 Foxtrail Drive, Suite 325 Loveland, CO 970-776-3321

WELL LOCATION CERTIFICATE

THIS MAP DOES NOT REPRESENT A BOUNDARY SURVEY

SECTION: 24
TOWNSHIP: 5N
RANGE: 65W



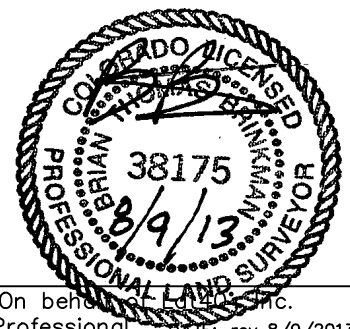
NOTE
According to Colorado law, you must commence any legal action based upon any defect in this W.L.C. within three years after you discover such defect. In no event, may any action based upon any defect in this survey be commenced more than ten years after the date of the certificate shown hereon. (13-80-105 C.R.S.)

LEGEND

- = ALIQUOT MONUMENT AS DESCRIBED
- = CALCULATED POSITION

SHEET 2 OF 2

Brian T. Brinkman—On behalf of Lat40°, Inc.
Colorado Licensed Professional
Land Surveyor No. 38175
DATE: rev 8/9/2013
PROJECT#: 2013003



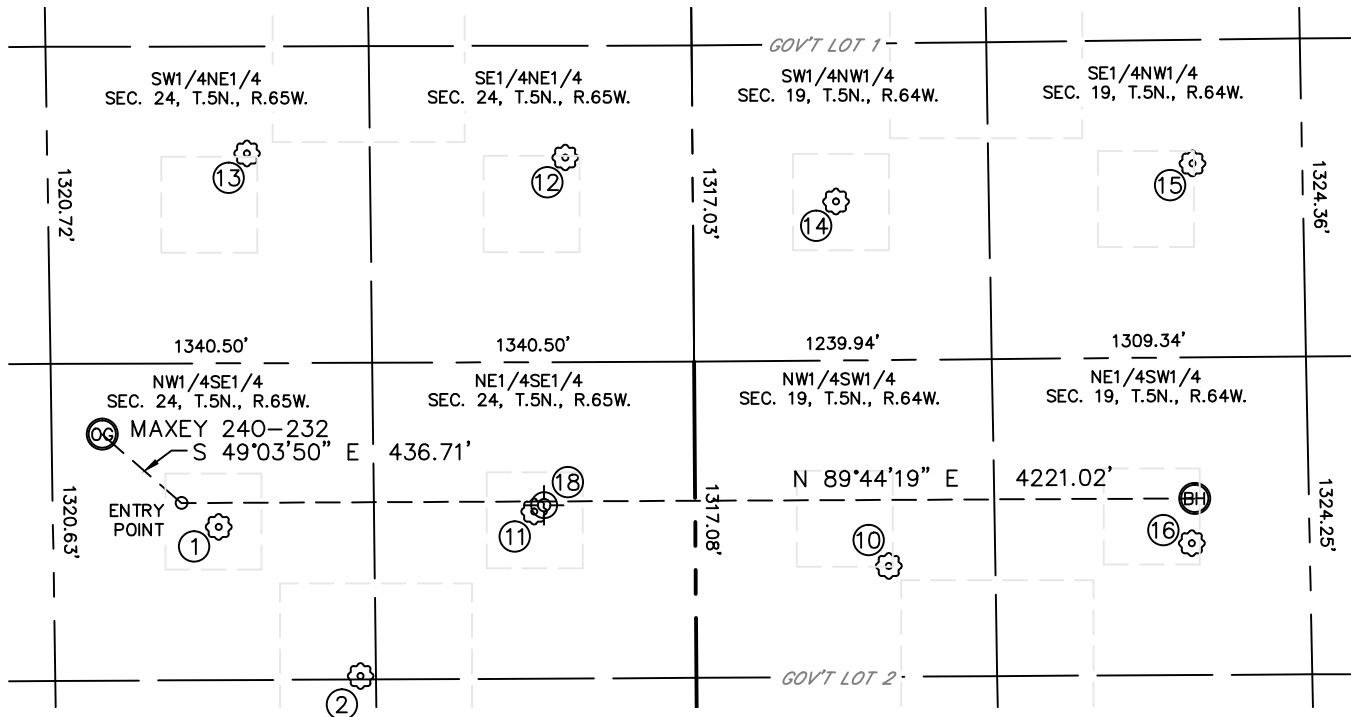


Lat40°, Inc. 1635 Foxtrail Drive, Suite 325 Loveland, CO 970-776-3321

SITE SKETCH

MAXEY 240-232

SECTION: 24
TOWNSHIP: 5N
RANGE: 65W



①
MAXEY 33-24
NW1/4SE1/4
1958' FSL
1986' FEL
LAT-40.38278°N
LONG-104.60904°W
PDOP: 1.8
ELEV: 4636'

②
MAXEY 24D
NW1/4SE1/4
1333' FSL
1399' FEL
LAT-40.38106°N
LONG-104.60694°W
PDOP: 1.8
ELEV: 4636'

⑩
MAXEY HOFF 2
NW1/4SW1/4
(GOV'T LOT 2)
1781' FSL
804' FWL
LAT-40.38226°N
LONG-104.59903°W
PDOP: 2.0
ELEV: 4631'

⑪
MAXEY 43-24
NE1/4SE1/4
2014' FSL
672' FEL
LAT-40.38292°N
LONG-104.60432°W
PDOP: 2.0
ELEV: 4635'

⑫
SANDIN 24-8H5
SE1/4NE1/4
1784' FNL
530' FEL
LAT-40.38697°N
LONG-104.60380°W
PDOP: 1.9
ELEV: 4632'

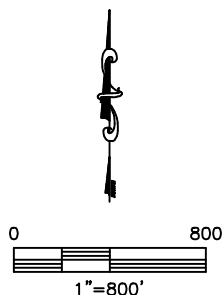
⑬
SANDIN 24-7H5
SW1/4NE1/4
1766' FNL
1856' FEL
LAT-40.38705°N
LONG-104.60856°W
PDOP: 1.9
ELEV: 4633'

⑭
KLEIN 1-19-5-64
SW1/4NW1/4
(GOV'T LOT 1)
1976' FNL
596' FWL
LAT-40.38643°N
LONG-104.59976°W
PDOP: 1.7
ELEV: 4632'

⑮
KLEIN B19-6
SE1/4NW1/4
1839' FNL
2082' FWL
LAT-40.38682°N
LONG-104.59443°W
PDOP: 2.0
ELEV: 4628'

⑯
EMILY 1
NE1/4SW1/4
1871' FSL
2067' FWL
LAT-40.38248°N
LONG-104.59449°W
PDOP: 2.9
ELEV: 4628'

⑰
MAXEY 1
Plugged & Abandoned
NE1/4SE1/4
2040' FSL (COGCC)
630' FEL (COGCC)
LAT-40.38295°N (COGCC)
LONG-104.60417°W (COGCC)
PDOP: N/A
ELEV: 4633' (COGCC)



DATE: rev 8/9/2013
PROJECT#: 2013003