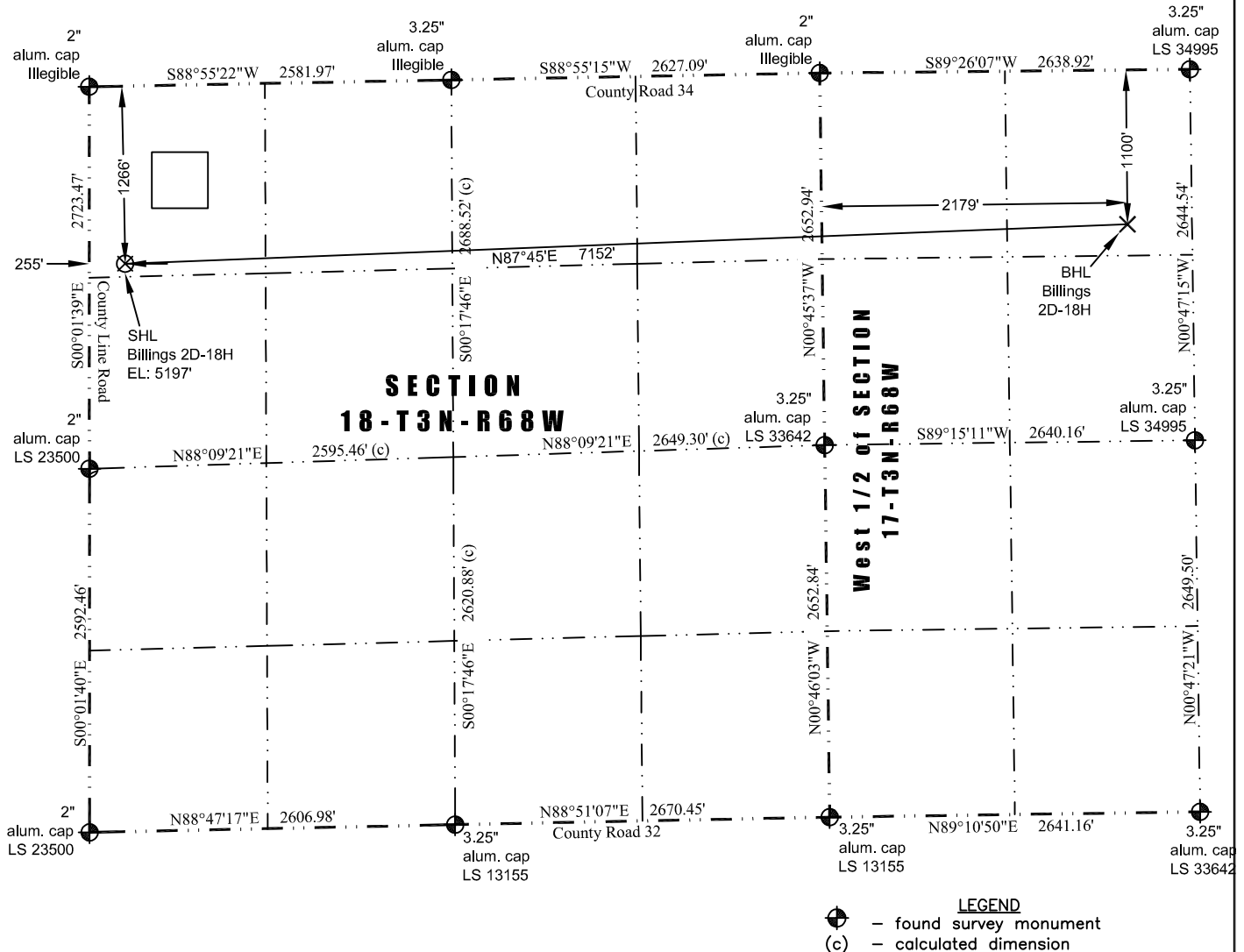


# JR Land Surveying, LLC

8114 Northstar Drive  
Windsor, Colorado 80528  
P. 970-576-4641

## WELL LOCATION CERTIFICATE

*THIS MAP DOES NOT REPRESENT A BOUNDARY SURVEY*



In accordance with a request from Jay Knutson of EnCana Oil & Gas (USA) Inc., JR Land Surveying, LLC has determined the location of the **Billings 2D-18H** well site to be SHL: 1266' FNL and 255' FWL, (BHL: 1100' FNL and 2179' FWL) as measured at ninety (90) degrees from the section lines of Section 18 and Section 17, Township 3 North, Range 68 West, 6th Principal Meridian, County of Weld, CO.

### Proposed Surface Hole Data:

Latitude: N 40.22931°, (BHL: 40.22998°)  
Longitude: W 105.05420°, (BHL: 105.02860°)  
PDOP: 2.0

### Nearest:

Building: 1,436' northeast	Above Ground Utility: 1,154' northwest
Public Road: 251' west	Railroad: 8,737' northwest
Property Line: 255' west	Well Window: SHL is 430' outside
Existing Well: Pedicord #1, 3,067' northwest	

### Notes:

- 1) Bearings and distances based on NAD 83 Colorado North State Plane Coordinates using RTK GPS observations taken 7/15/13 by operator John Rice.
- 2) Conversion factor to ground (1.000286833).
- 3) Elevations based on NAVD 88 GPS heights and Geoid 2003 corrections.
- 4) See Location Drawing for visible improvements within 400' of pad site.
- 5) The surface use is a cultivated field.

**NOTICE:** According to Colorado law you MUST commence any legal action based upon any defect in this W.L.C. within three years after you first discover such defect. In no event may any action based upon any defect in this W.L.C. be commenced more than ten years from this said date of the certification shown hereon.

I hereby certify that this Well Location Certificate was prepared by me or under my direct supervision on 7/16/2013 for and on behalf of EnCana Oil & Gas (USA) Inc. That it is not a Land Survey Plat or an Improvement Survey Plat and that it is not to be relied upon for establishment of fences, buildings, or other future improvement lines.

Scale 1" = 1200'  
0 1200  
approximate scale

John Robert McGeehee LS#38219  
Well: Billings 2D-18H WLC